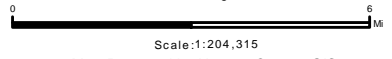




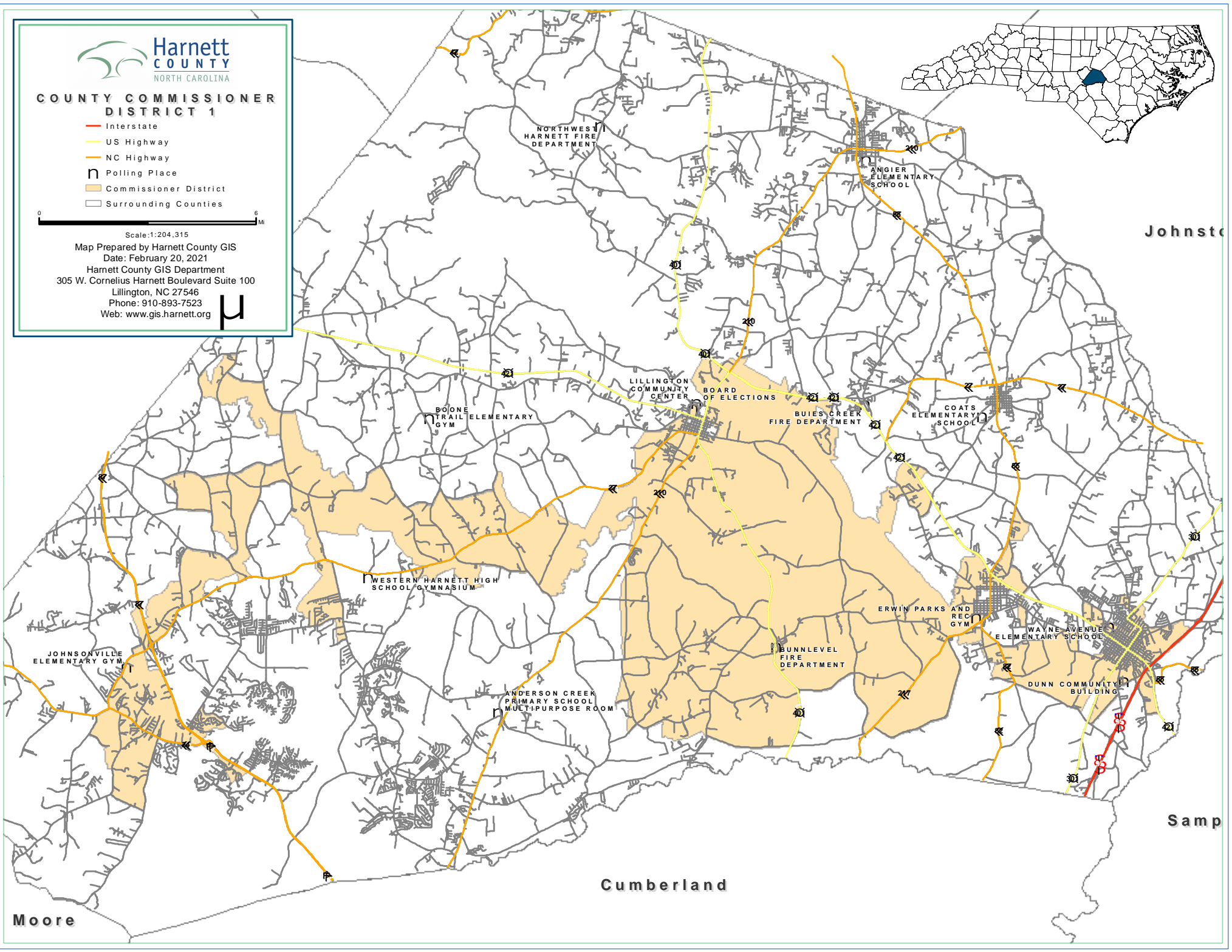
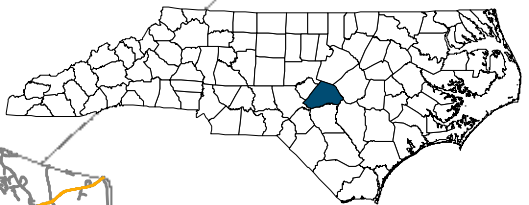
COUNTY COMMISSIONER DISTRICT 1

- Interstate
- US Highway
- NC Highway
- Polling Place
- Commissioner District
- Surrounding Counties



Scale: 1:204,315

Map Prepared by Harnett County GIS
 Date: February 20, 2021
 Harnett County GIS Department
 305 W. Cornelius Harnett Boulevard Suite 100
 Lillington, NC 27546
 Phone: 910-893-7523
 Web: www.gis.harnett.org



Johnston

Sampson

Cumberland

Moore

NORTH WEST
HARNETT FIRE
DEPARTMENT

ANGIER
ELEMENTARY
SCHOOL

BOJONE
TRAIL ELEMENTARY
GYM

LILLINGTON
COMMUNITY
CENTER

BOARD
OF ELECTIONS

BUIES CREEK
FIRE DEPARTMENT

COATS
ELEMENTARY
SCHOOL

WESTERN HARNETT HIGH
SCHOOL GYMNASIUM

ERWIN PARKS AND REC
GYM

WAYNE AVENUE
ELEMENTARY SCHOOL

JOHNSONVILLE
ELEMENTARY GYM

BUNNLEVEL
FIRE DEPARTMENT

DUNN COMMUNITY
BUILDING

ANDERSON CREEK
PRIMARY SCHOOL
MULTIPURPOSE ROOM