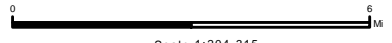




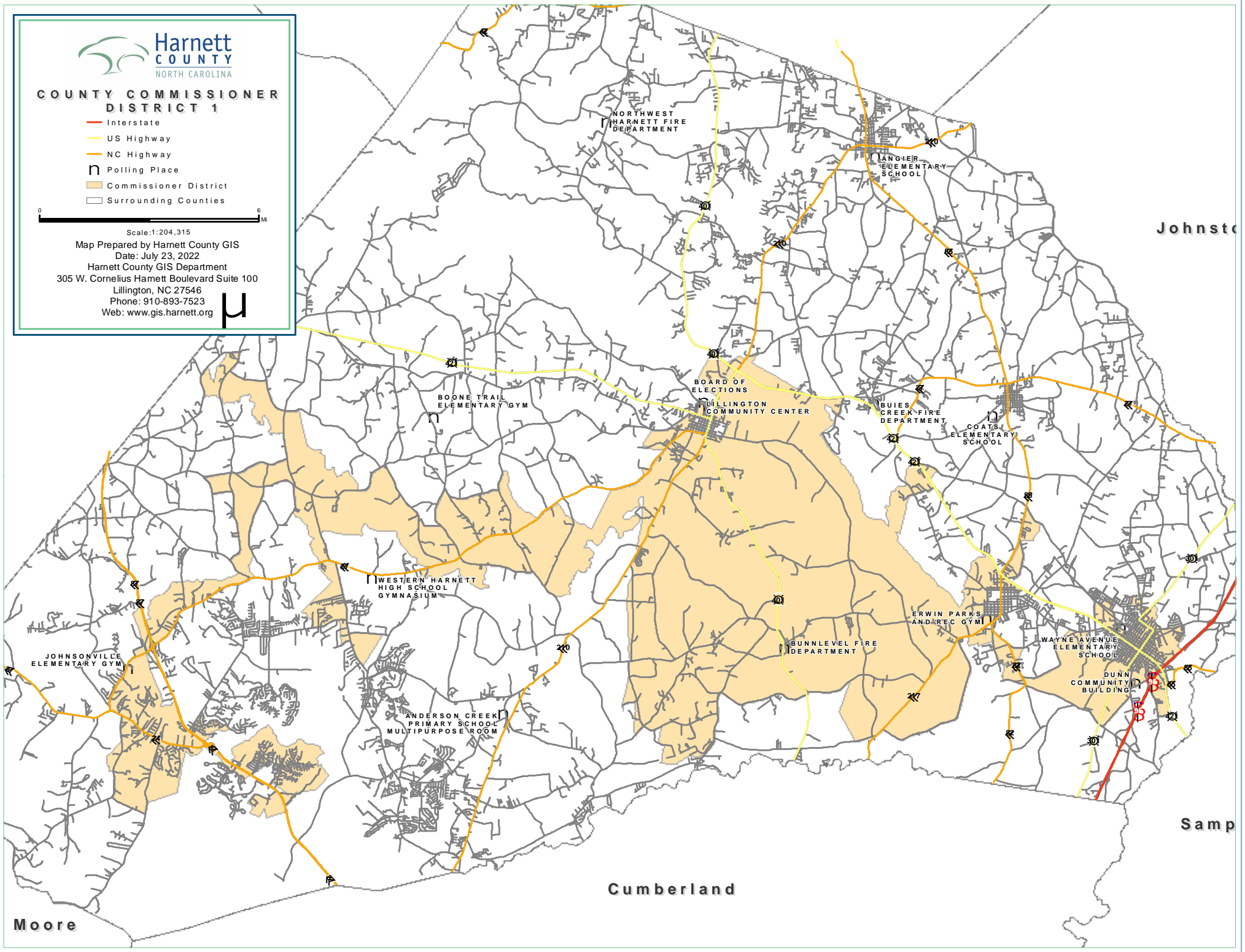
# COUNTY COMMISSIONER DISTRICT 1

- Interstate
- US Highway
- NC Highway
- Polling Place
- Commissioner District
- Surrounding Counties



Scale: 1:204,315

Map Prepared by Harnett County GIS  
 Date: July 23, 2022  
 Harnett County GIS Department  
 305 W. Cornelius Harnett Boulevard Suite 100  
 Lillington, NC 27546  
 Phone: 910-893-7523  
 Web: [www.gis.harnett.org](http://www.gis.harnett.org)



Cumberland

Johnston

Sampson

Moore

BOONE TRAIL ELEMENTARY GYM

BOARD OF ELECTIONS  
LILLINGTON COMMUNITY CENTER

BUIES CREEK FIRE DEPARTMENT

COATS ELEMENTARY SCHOOL

WESTERN HARNETT HIGH SCHOOL GYMNASIUM

ERWIN PARKS AND REC GYM

WAYNE AVENUE ELEMENTARY SCHOOL

JOHNSONVILLE ELEMENTARY GYM

ANDERSON CREEK PRIMARY SCHOOL MULTIPURPOSE ROOM

BUNNLEVEL FIRE DEPARTMENT

DUNN COMMUNITY BUILDING

NORTHWEST HARNETT FIRE DEPARTMENT

LANGIER ELEMENTARY SCHOOL