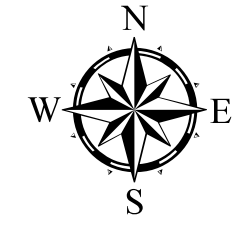




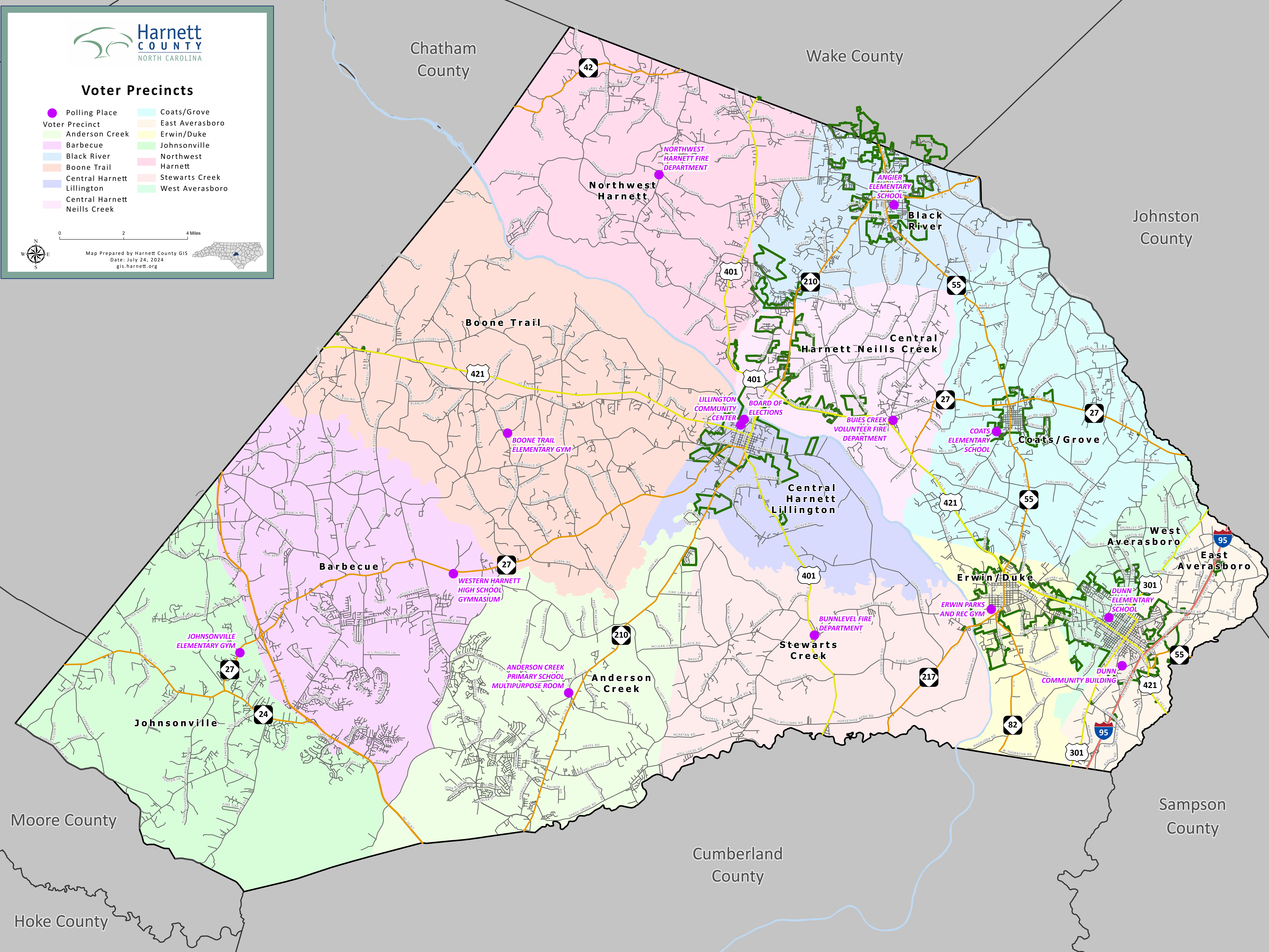
Voter Precincts

- Polling Place
- Coats/Grove
- Anderson Creek
- Barbecue
- Black River
- Boone Trail
- Central Harnett
- Lillington
- Central Harnett
- Neills Creek
- East Avasboro
- Erwin/Duke
- Johnsonville
- Northwest
- Harnett
- Stewarts Creek
- West Avasboro



0 2 4 Miles

Map Prepared by Harnett County GIS
Date: July 24, 2024
gis.harnett.org



Chatham County

Wake County

Johnston County

Moore County

Hoke County

Cumberland County

Sampson County

Northwest Harnett

Black River

Boone Trail

Central Harnett Neills Creek

Barbecue

Central Harnett Lillington

Johnsonville

Anderson Creek

Stewarts Creek

Erwin/Duke

Coats/Grove

West Avasboro

East Avasboro

Dunn Community Building

Dunn Elementary School

Erwin Parks and Rec Gym

Bunlevel Fire Department

Anderson Creek Primary School Multipurpose Room

Western Harnett High School Gymnasium

Boone Trail Elementary Gym

Lillington Community Center

Board of Elections

Buies Creek Volunteer Fire Department

Coats Elementary School

Angier Elementary School

Northwest Harnett Fire Department