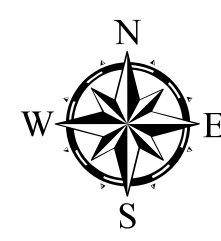




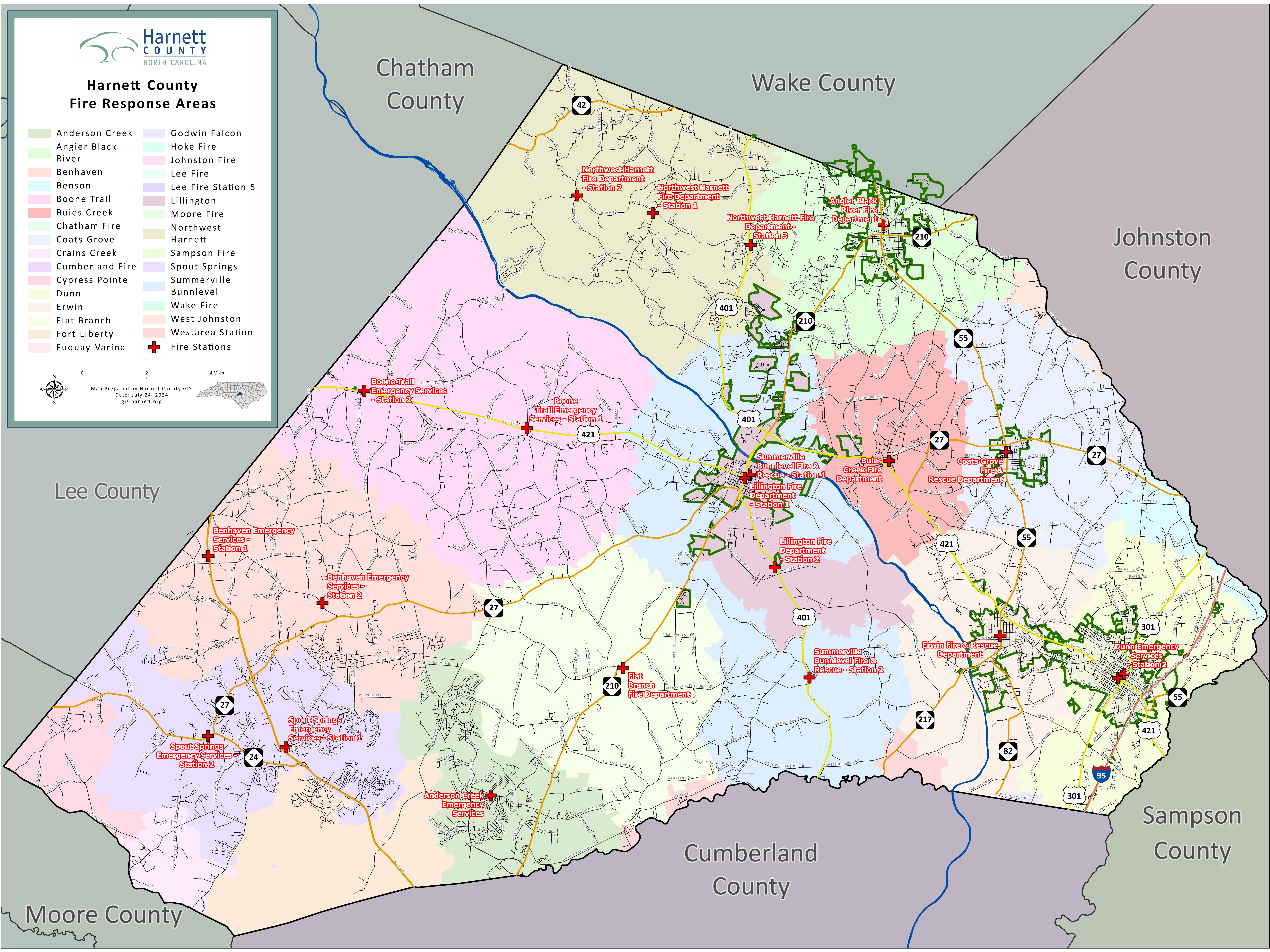
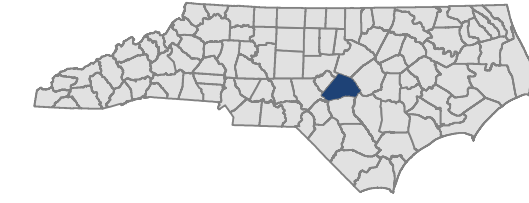
Harnett County Fire Response Areas

- | | |
|--------------------|--------------------|
| Anderson Creek | Godwin Falcon |
| Angier Black River | Hoke Fire |
| Benhaven | Johnston Fire |
| Benson | Lee Fire |
| Boone Trail | Lee Fire Station 5 |
| Buies Creek | Lillington |
| Chatham Fire | Moore Fire |
| Coats Grove | Northwest Harnett |
| Crains Creek | Sampson Fire |
| Cumberland Fire | Spout Springs |
| Cypress Pointe | Summerville |
| Dunn | Bunnlevel |
| Erwin | Wake Fire |
| Flat Branch | West Johnston |
| Fort Liberty | Westarea Station |
| Fuquay-Varina | Fire Stations |



0 2 4 Miles

Map Prepared by Harnett County GIS
Date: July 24, 2024
gis.harnett.org



Chatham County

Wake County

Johnston County

Lee County

Cumberland County

Sampson County

Moore County