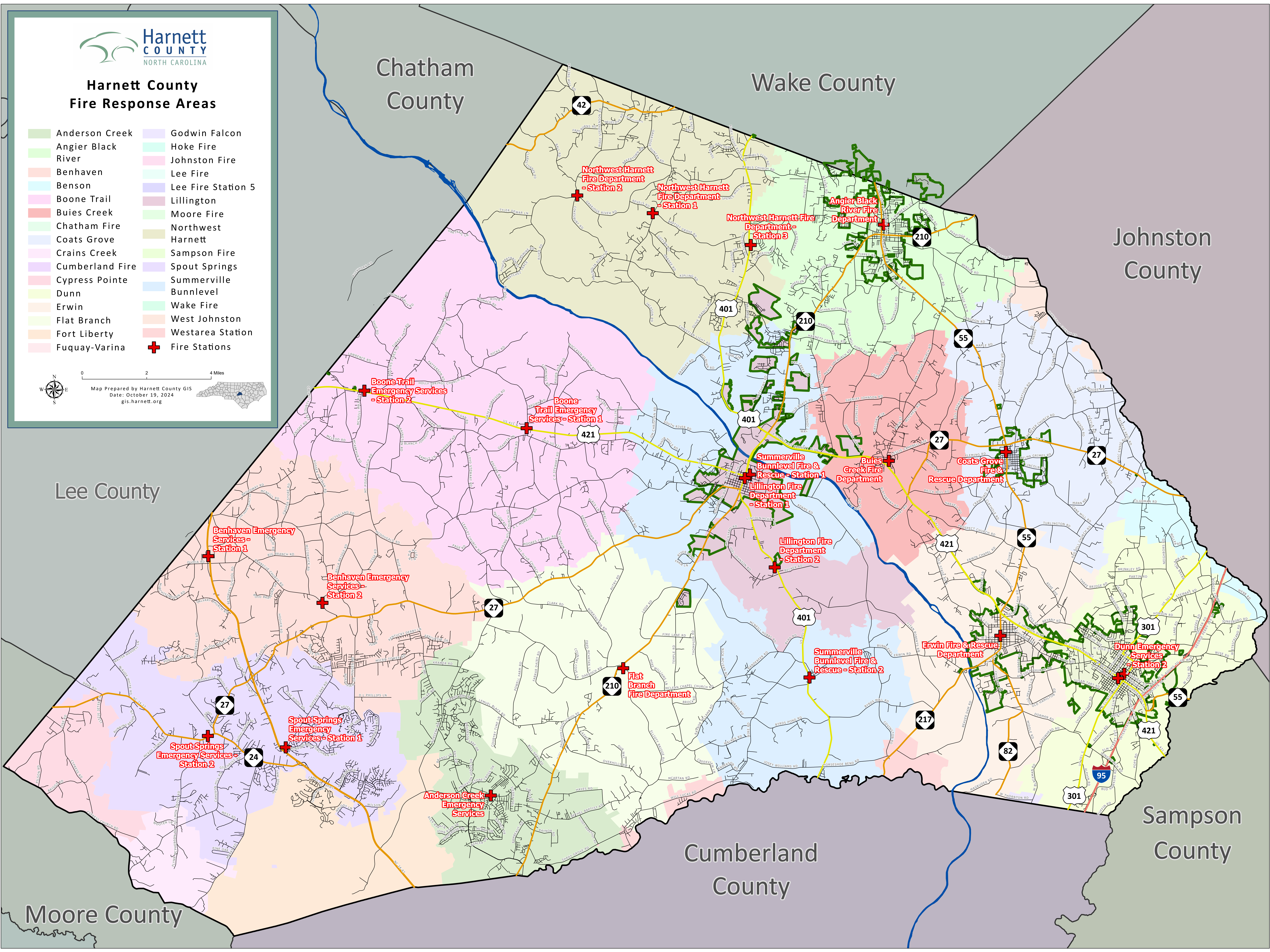




# Harnett County Fire Response Areas

- |                    |                    |
|--------------------|--------------------|
| Anderson Creek     | Godwin Falcon      |
| Angier Black River | Hoke Fire          |
| Benhaven           | Johnston Fire      |
| Benson             | Lee Fire           |
| Boone Trail        | Lee Fire Station 5 |
| Buies Creek        | Lillington         |
| Chatham Fire       | Moore Fire         |
| Coats Grove        | Northwest Harnett  |
| Crains Creek       | Sampson Fire       |
| Cumberland Fire    | Spout Springs      |
| Cypress Pointe     | Summerville        |
| Dunn               | Bunnlevel          |
| Erwin              | Wake Fire          |
| Flat Branch        | West Johnston      |
| Fort Liberty       | Westarea Station   |
| Fuquay-Varina      | Fire Stations      |

Map Prepared by Harnett County GIS  
Date: October 19, 2024  
gis.harnett.org



**Northwest Harnett Fire Department - Station 2**

**Northwest Harnett Fire Department - Station 1**

**Northwest Harnett Fire Department - Station 3**

**Angier Black River Fire Department**

**Boone Trail Emergency Services - Station 2**

**Boone Trail Emergency Services - Station 1**

**Summerville Bunnlevel Fire & Rescue - Station 1**

**Lillington Fire Department - Station 1**

**Lillington Fire Department - Station 2**

**Buies Creek Fire Department**

**Coats Grove Fire & Rescue Department**

**Benhaven Emergency Services - Station 1**

**Benhaven Emergency Services - Station 2**

**Spout Springs Emergency Services - Station 1**

**Spout Springs Emergency Services - Station 2**

**Anderson Creek Emergency Services**

**Flat Branch Fire Department**

**Summerville Bunnlevel Fire & Rescue - Station 2**

**Erwin Fire & Rescue Department**

**Dunn Emergency Services - Station 2**