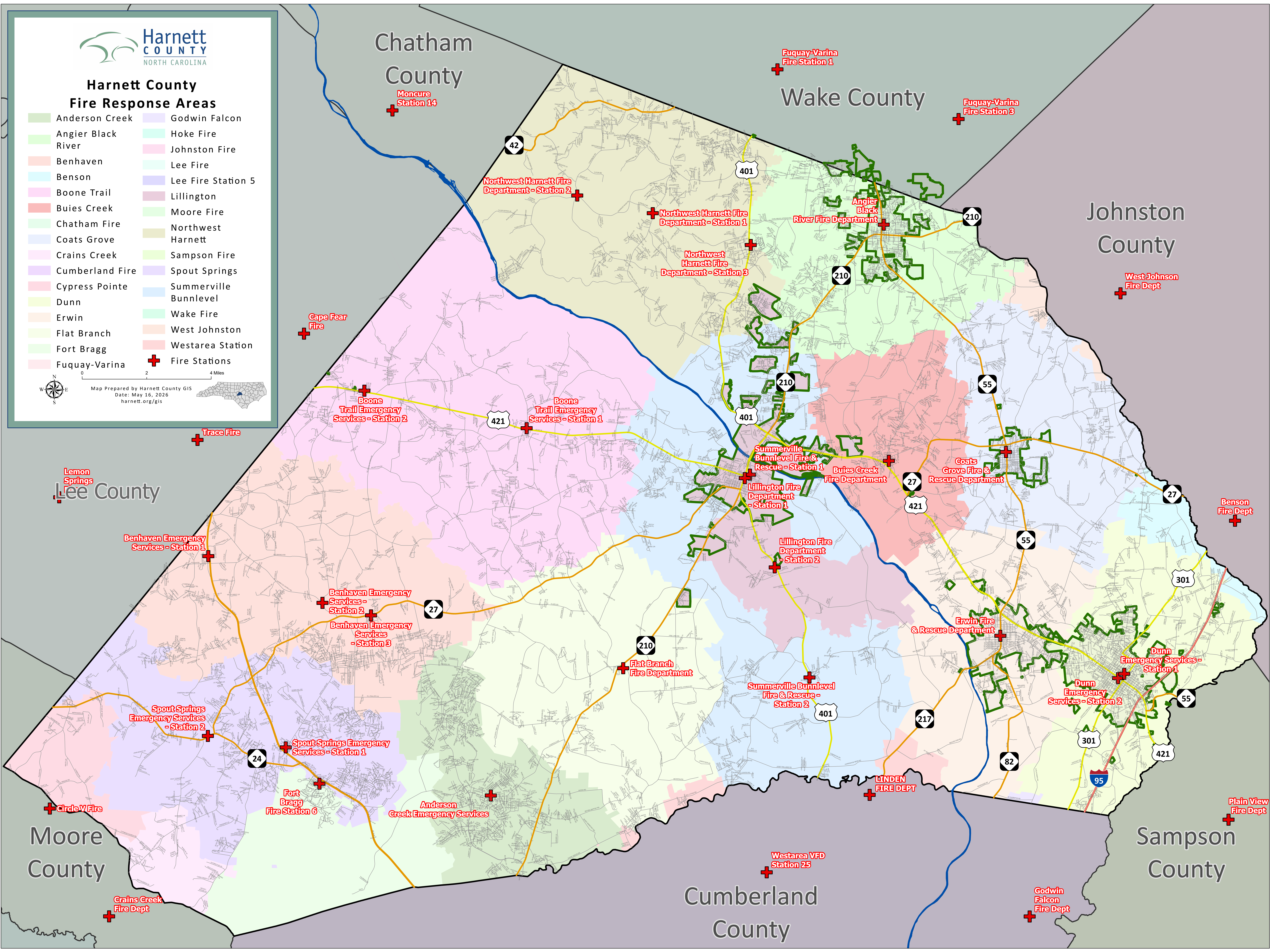




Harnett County Fire Response Areas

- | | |
|--------------------|--------------------|
| Anderson Creek | Godwin Falcon |
| Angier Black River | Hoke Fire |
| Benhaven | Johnston Fire |
| Benson | Lee Fire |
| Boone Trail | Lee Fire Station 5 |
| Buies Creek | Lillington |
| Chatham Fire | Moore Fire |
| Coats Grove | Northwest Harnett |
| Crains Creek | Sampson Fire |
| Cumberland Fire | Spout Springs |
| Cypress Pointe | Summerville |
| Dunn | Bunnlevel |
| Erwin | Wake Fire |
| Flat Branch | West Johnston |
| Fort Bragg | Westarea Station |
| Fuquay-Varina | Fire Stations |

Map Prepared by Harnett County GIS
Date: May 16, 2026
harnett.org/gis



Chatham
County

Wake
County

Johnston
County

Lee
County

Moore
County

Cumberland
County

Sampson
County

Fuquay-Varina
Fire Station 1

Moncure
Station 14

Fuquay-Varina
Fire Station 3

Northwest Harnett Fire
Department - Station 2

Northwest Harnett Fire
Department - Station 1

Northwest
Harnett Fire
Department - Station 3

Angier
Black
River Fire Department

West Johnston
Fire Dept

Cape Fear
Fire

Boone
Trail Emergency
Services - Station 2

Boone
Trail Emergency
Services - Station 1

Summerville
Bunnlevel Fire &
Rescue - Station 1

Buies Creek
Fire Department

Coats
Grove Fire &
Rescue Department

Benson
Fire Dept

Benhaven Emergency
Services - Station 1

Benhaven Emergency
Services -
Station 2

Benhaven Emergency
Services
- Station 3

Spout Springs
Emergency Services
- Station 2

Spout Springs
Emergency
Services - Station 1

Fort
Bragg
Fire Station 6

Anderson
Creek Emergency
Services

Flat Branch
Fire Department

Summerville Bunnlevel
Fire & Rescue -
Station 2

Westarea VFD
Station 25

LINDEN
FIRE DEPT

Erwin Fire
& Rescue Department

Dunn
Emergency Services -
Station 1

Dunn
Emergency
Services - Station 2

Plain View
Fire Dept

Godwin
Falcon
Fire Dept

Circle V Fire

Crains Creek
Fire Dept