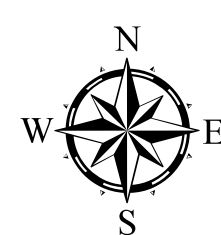


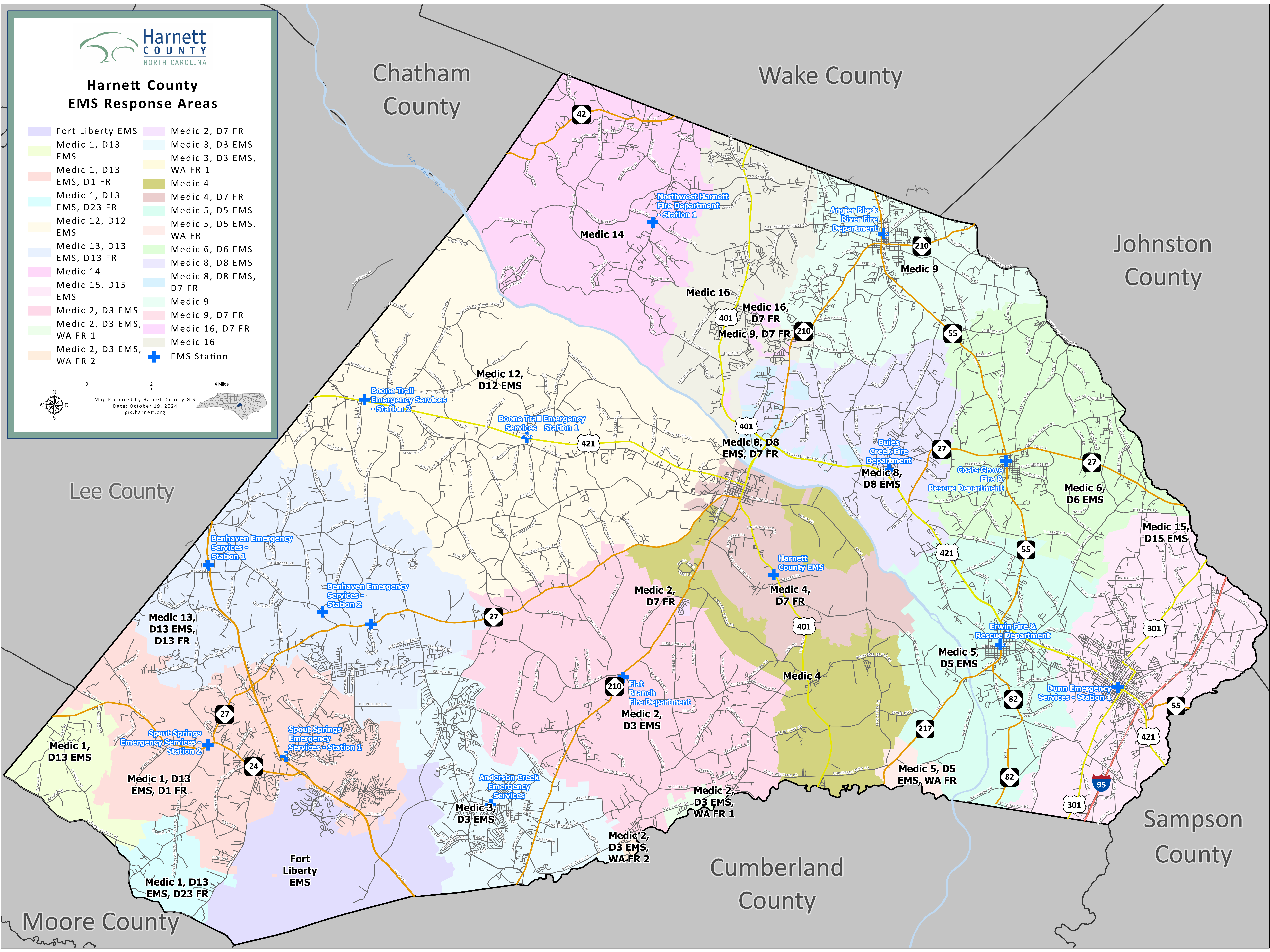
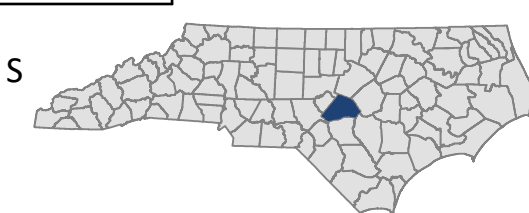


Harnett County EMS Response Areas

- Fort Liberty EMS
- Medic 1, D13 EMS
- Medic 1, D13 EMS, D1 FR
- Medic 1, D13 EMS, D23 FR
- Medic 12, D12 EMS
- Medic 13, D13 EMS, D13 FR
- Medic 14
- Medic 15, D15 EMS
- Medic 2, D3 EMS, WA FR 1
- Medic 2, D3 EMS, WA FR 2
- Medic 2, D7 FR
- Medic 3, D3 EMS
- Medic 3, D3 EMS, WA FR 1
- Medic 4
- Medic 4, D7 FR
- Medic 5, D5 EMS
- Medic 5, D5 EMS, WA FR
- Medic 6, D6 EMS
- Medic 8, D8 EMS
- Medic 8, D8 EMS, D7 FR
- Medic 9
- Medic 9, D7 FR
- Medic 16, D7 FR
- Medic 16
- EMS Station



Map Prepared by Harnett County GIS
Date: October 19, 2024
gis.harnett.org



Chatham County

Wake County

Johnston County

Lee County

Cumberland County

Sampson County

Moore County