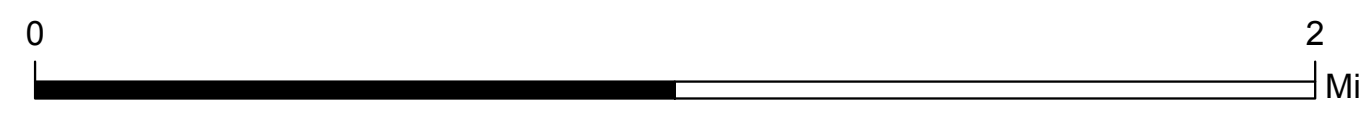




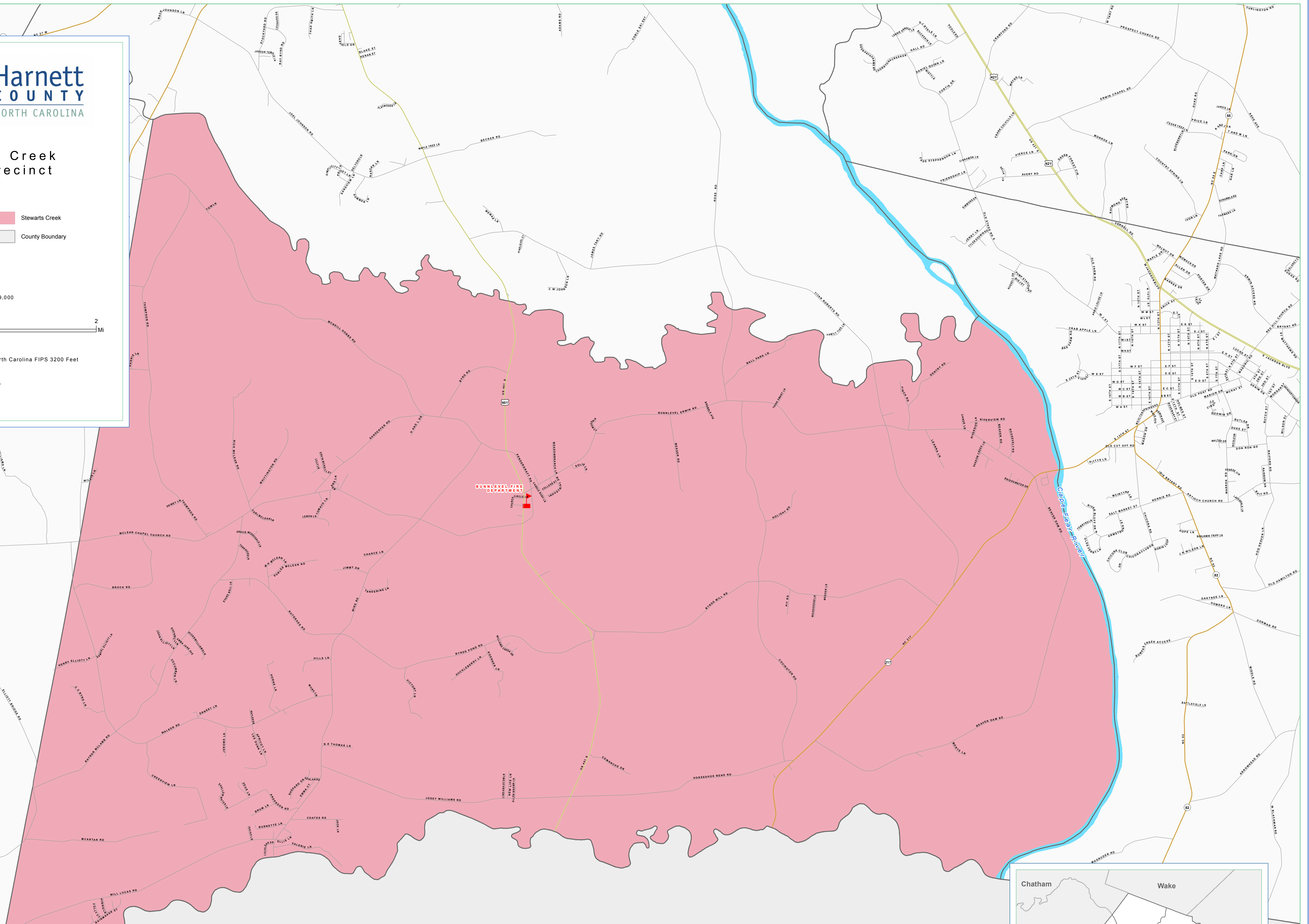
### Stewarts Creek Voter Precinct

- POLLING PLACE
- Stewarts Creek
- US Highway
- County Boundary
- NC Highway

Scale: 1:19,000



Map Prepared by Harnett County GIS  
Date: February 16, 2019  
Coordinate System: NAD 1983 StatePlane North Carolina FIPS 3200 Feet  
Projection: Lambert Conformal Conic  
Datum: North American 1983  
Harnett County GIS Department  
305 W. Cornelius Harnett Boulevard Suite 100  
Lillington, NC 27546  
Phone: 910-893-7523  
Fax: 910-814-8251  
Email: [gis@harnett.org](mailto:gis@harnett.org)  
Web: [www.gis.harnett.org](http://www.gis.harnett.org)



Cumberland County

