



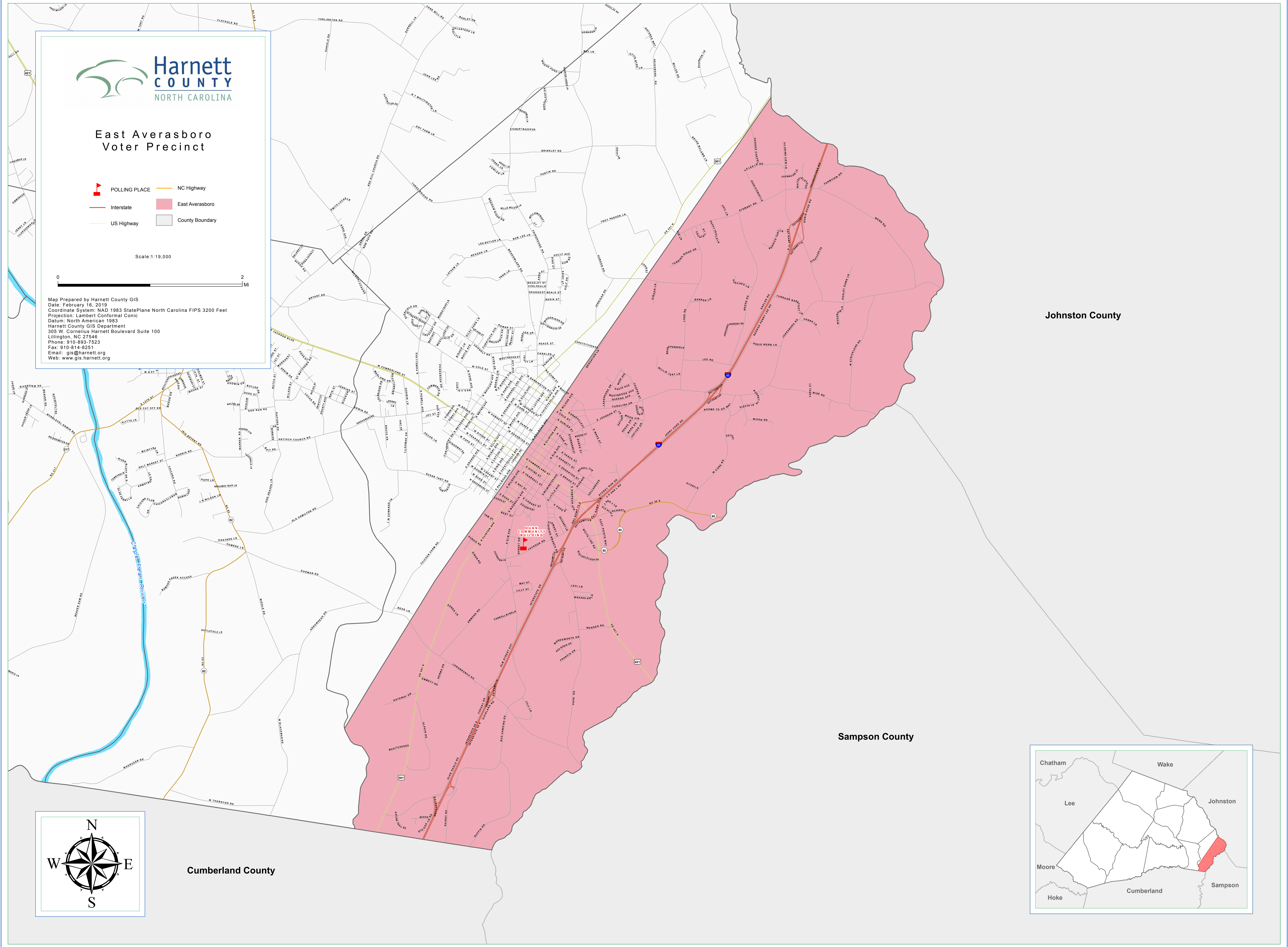
East Averasboro Voter Precinct

- POLLING PLACE
- NC Highway
- Interstate
- East Averasboro
- US Highway
- County Boundary

Scale: 1:19,000



Map Prepared by Harnett County GIS
Date: February 16, 2019
Coordinate System: NAD 1983 StatePlane North Carolina FIPS 3200 Feet
Projection: Lambert Conformal Conic
Datum: North American 1983
Harnett County GIS Department
305 W. Cornelius Harnett Boulevard Suite 100
Lillington, NC 27546
Phone: 910-893-7523
Fax: 910-814-8251
Email: gis@harnett.org
Web: www.gis.harnett.org



Johnston County

Sampson County

Cumberland County

