



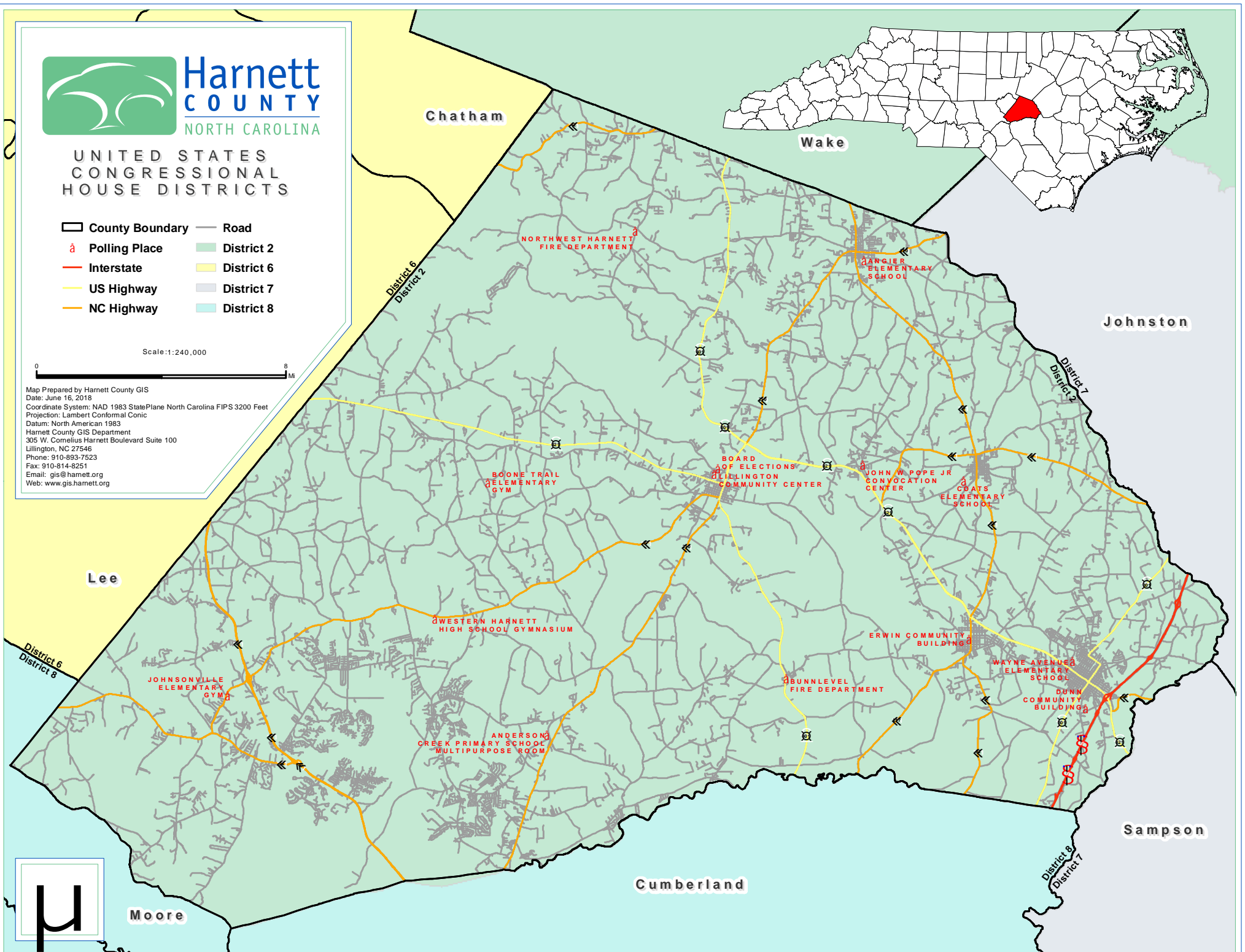
UNITED STATES CONGRESSIONAL HOUSE DISTRICTS

- County Boundary
- Road
- Polling Place
- District 2
- District 6
- District 7
- District 8
- Interstate
- US Highway
- NC Highway

Scale: 1:240,000



Map Prepared by Harnett County GIS
 Date: June 16, 2018
 Coordinate System: NAD 1983 StatePlane North Carolina FIPS 3200 Feet
 Projection: Lambert Conformal Conic
 Datum: North American 1983
 Harnett County GIS Department
 305 W. Cornelius Harnett Boulevard Suite 100
 Lillington, NC 27546
 Phone: 910-893-7523
 Fax: 910-814-8251
 Email: gis@harnett.org
 Web: www.gis.harnett.org



Moore

Cumberland

Sampson

Johnston

Wake

Chatham

District 6
District 2

District 7
District 2

District 6
District 8

District 8
District 7