



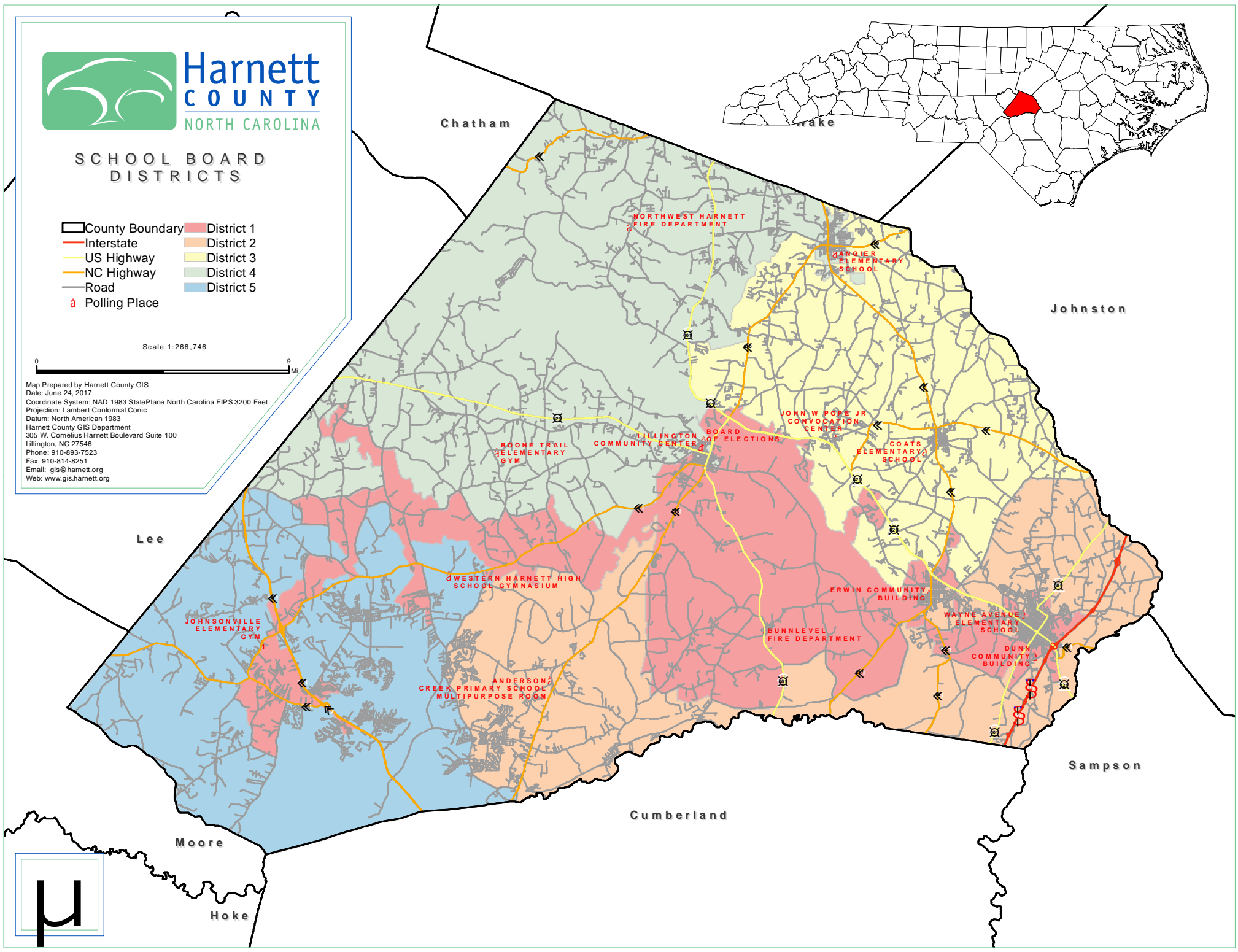
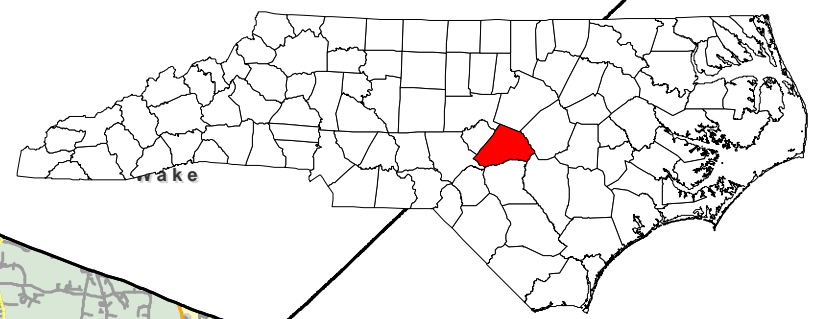
SCHOOL BOARD DISTRICTS

- County Boundary
- Interstate
- US Highway
- NC Highway
- Road
- Polling Place
- District 1
- District 2
- District 3
- District 4
- District 5

Scale: 1:266,746



Map Prepared by Harnett County GIS
 Date: June 24, 2017
 Coordinate System: NAD 1983 StatePlane North Carolina FIPS 3200 Feet
 Projection: Lambert Conformal Conic
 Datum: North American 1983
 Harnett County GIS Department
 305 W. Cornelius Harnett Boulevard Suite 100
 Lillington, NC 27546
 Phone: 910-893-7523
 Fax: 910-814-8251
 Email: gis@harnett.org
 Web: www.gis.harnett.org



Chatham
 Johnston
 Lee
 Cumberland
 Moore
 Hoke
 Sampson