









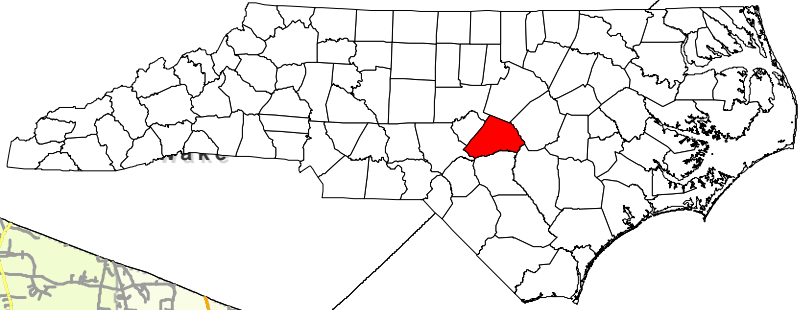
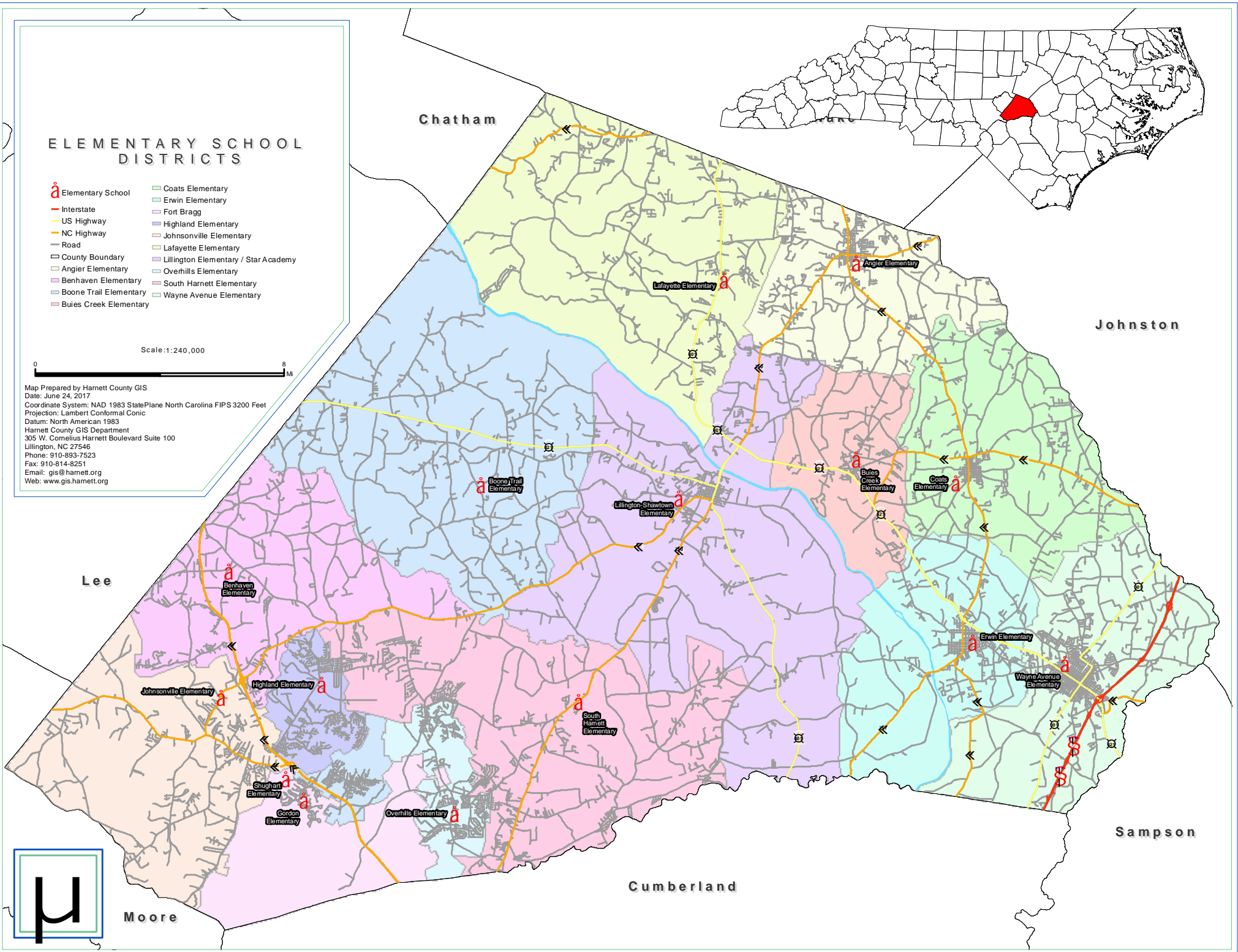
ELEMENTARY SCHOOL DISTRICTS

-  Elementary School
-  Interstate
-  US Highway
-  NC Highway
-  Road
-  County Boundary
-  Coats Elementary
-  Erwin Elementary
-  Fort Bragg
-  Highland Elementary
-  Johnsonville Elementary
-  Lafayette Elementary
-  Lillington Elementary / Star Academy
-  Angier Elementary
-  Overhills Elementary
-  South Harnett Elementary
-  Boone Trail Elementary
-  Wayne Avenue Elementary
-  Bules Creek Elementary

Scale: 1:240,000



Map Prepared by Harnett County GIS
 Date: June 24, 2017
 Coordinate System: NAD 1983 StatePlane North Carolina FIPS 3200 Feet
 Projection: Lambert Conformal Conic
 Datum: North American 1983
 Harnett County GIS Department
 305 W. Cornelius Harnett Boulevard Suite 100
 Lillington, NC 27546
 Phone: 910-893-7523
 Fax: 910-814-8251
 Email: gis@harnett.org
 Web: www.gis.harnett.org



Moore

Cumberland

Sampson

Lee

Chatham

Johnston