

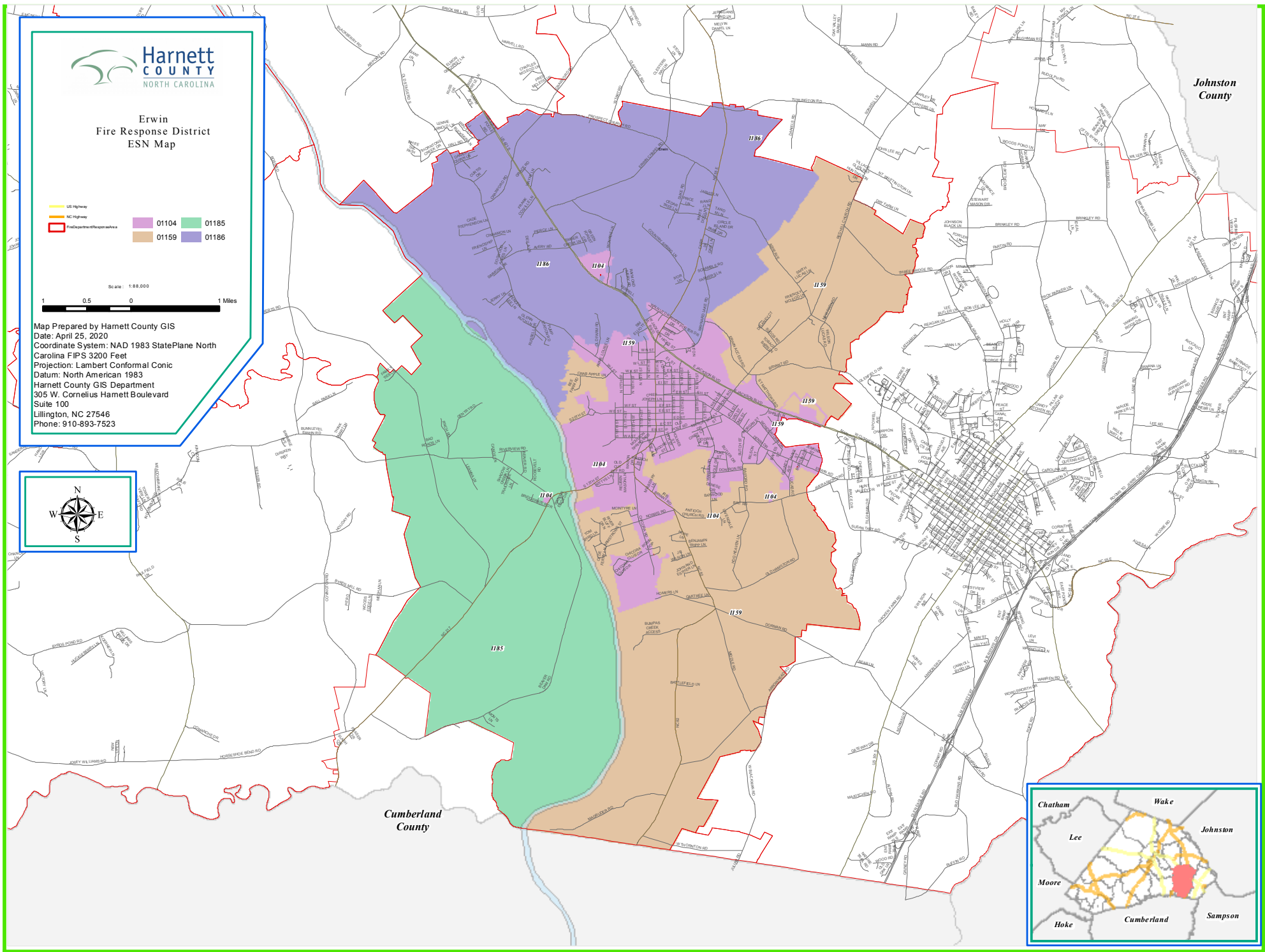


### Erwin Fire Response District ESN Map

- US Highway
- NC Highway
- Fire Department Response Area
- 01104
- 01159
- 01185
- 01186



Map Prepared by Harnett County GIS  
Date: April 25, 2020  
Coordinate System: NAD 1983 StatePlane North Carolina FIPS 3200 Feet  
Projection: Lambert Conformal Conic  
Datum: North American 1983  
Harnett County GIS Department  
305 W. Cornelius Hamett Boulevard  
Suite 100  
Lillington, NC 27546  
Phone: 910-893-7523



Johnston County

Cumberland County

