

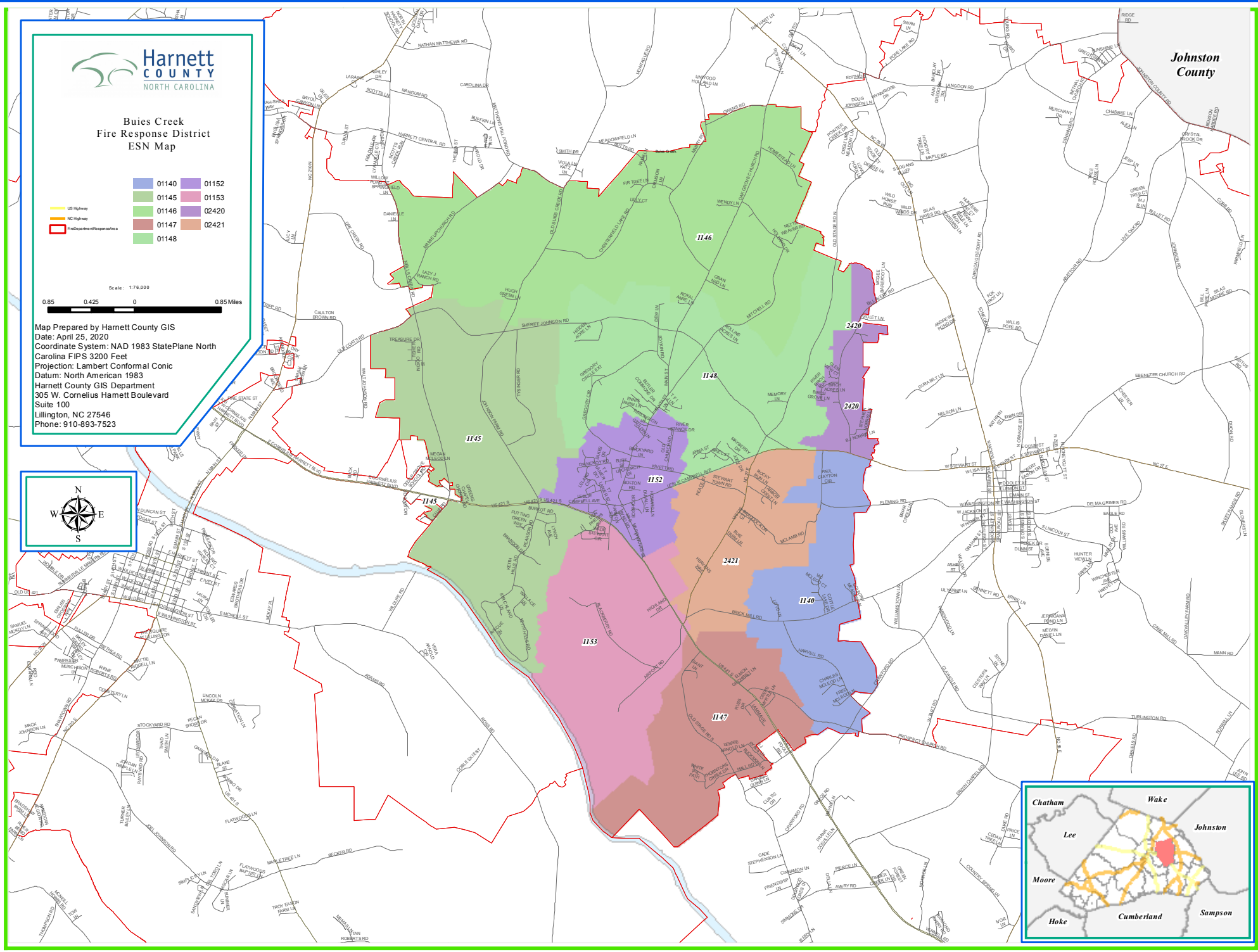


Buies Creek Fire Response District ESN Map

- 01140
- 01145
- US Highway
- NC Highway
- Fire Department Response Surface
- 01152
- 01153
- 01146
- 02420
- 01147
- 02421
- 01148



Map Prepared by Harnett County GIS
 Date: April 25, 2020
 Coordinate System: NAD 1983 StatePlane North Carolina FIPS 3200 Feet
 Projection: Lambert Conformal Conic
 Datum: North American 1983
 Harnett County GIS Department
 305 W. Cornelius Hammet Boulevard
 Suite 100
 Lillington, NC 27546
 Phone: 910-893-7523



Johnston County

