

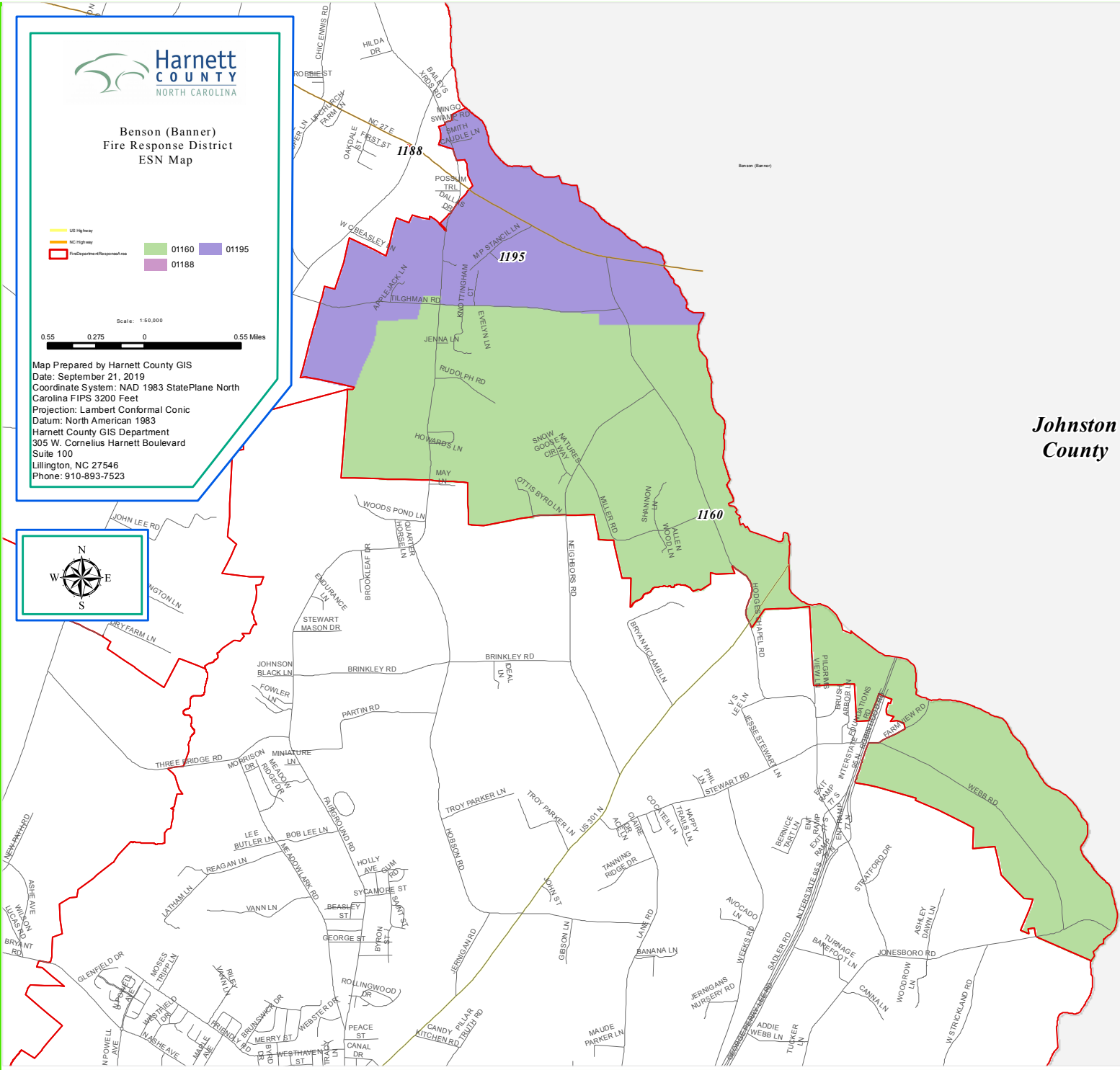


Benson (Banner) Fire Response District ESN Map

- US Highway
- NC Highway
- Fire Department Response Area
- 01160
- 01195
- 01188



Map Prepared by Harnett County GIS
 Date: September 21, 2019
 Coordinate System: NAD 1983 StatePlane North Carolina FIPS 3200 Feet
 Projection: Lambert Conformal Conic
 Datum: North American 1983
 Harnett County GIS Department
 305 W. Cornelius Harnett Boulevard
 Suite 100
 Lillington, NC 27546
 Phone: 910-893-7523



Johnston County

