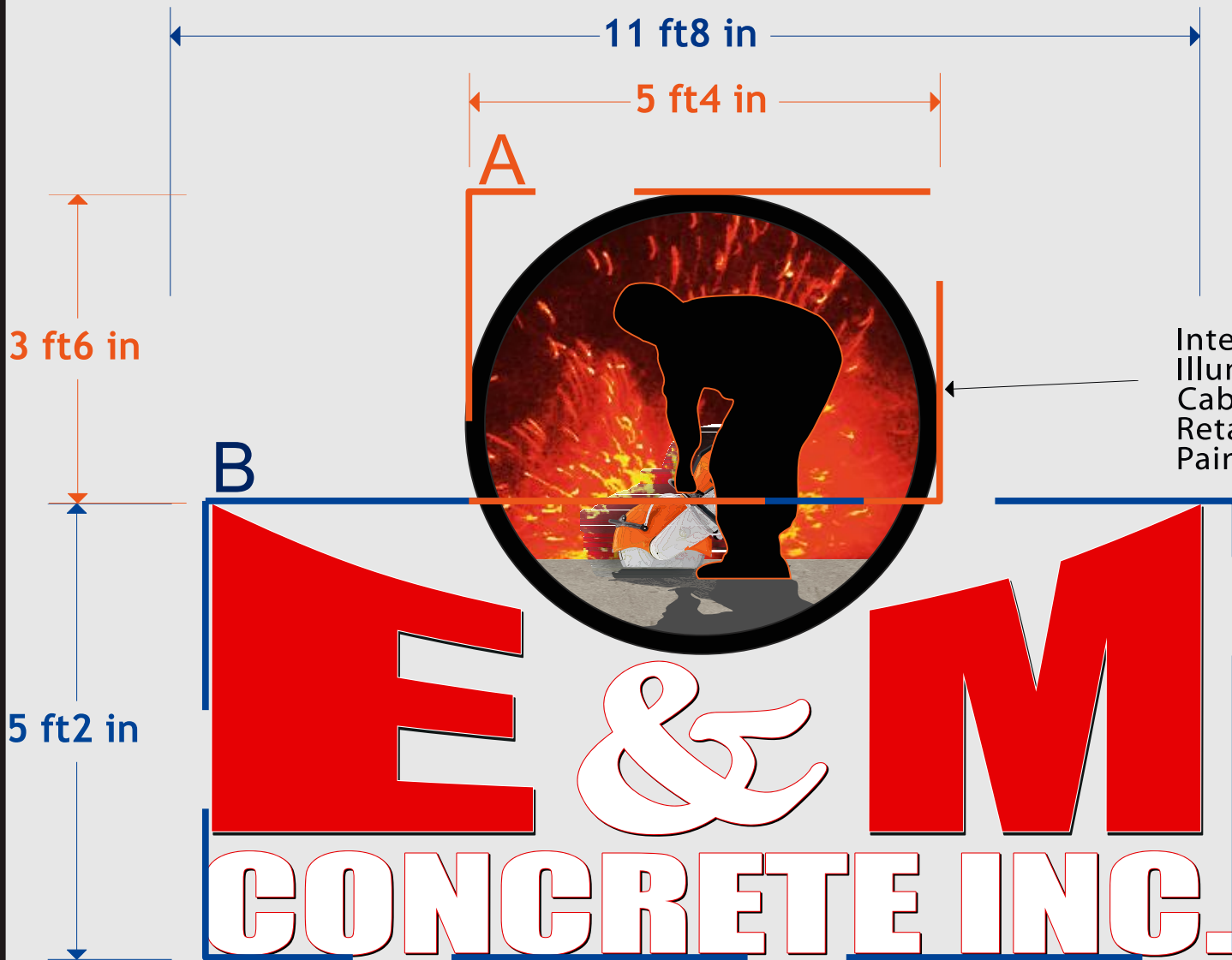
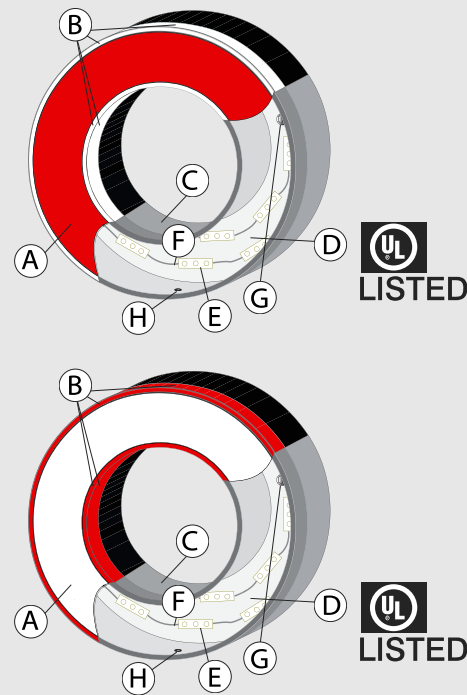


Front Elevation - Internally LED Illuminated Channel Letters & Logo (Flush Mounted)



Internally LED
Illuminated Sign
Cabinet - 2" Retainers
Retainers and Cabinet
Painted Black



- ☐ A Red 2793 Acrylic Face
- ☐ B 1" White Jewelite face trim cap
- ☐ C 0.063 Aluminum Return painted Black (4" Deep)
- ☐ D .125 ACM letter back plate
- ☐ E Internal GE Red LEDs
- ☐ F Low Voltage LED wire
- ☐ G 1/4" Tapcon attachments (min. 4 per letter)
- ☐ H Return Weep Hole

- ☐ A White 7328 Acrylic Face
- ☐ B 1" Red Jewelite face trim cap
- ☐ C 0.063 Aluminum Return painted Black (4" Deep)
- ☐ D .125 ACM letter back plate
- ☐ E Internal GE White LEDs
- ☐ F Low Voltage LED wire
- ☐ G 1/4" Tapcon attachments (min. 4 per letter)
- ☐ H Return Weep Hole

The logo for Advance Signs & Service features a large, stylized red letter 'A' with a white outline. Below the 'A', the word 'ADVANCE' is written in a red, serif, all-caps font with a white outline. Underneath 'ADVANCE', the words 'SIGNS & SERVICE' are written in a white, sans-serif, all-caps font. The entire logo is set against a dark background.

596 Church St.
Angier, NC 27501
919.639.4666

www.advancesignservice.com

All ideas, designs, and plans indicated or represented by this drawing are the property of Advance Signs & Service, Inc. and were created and developed for use in connection with the specified project; they are not to be used, reproduced or copied in whole or in part and shall be returned upon request. None of such ideas, designs or plans shall be used by or disclosed to any third parties, in whole or in part, without the written consent of Advance Signs & Service, Inc. Written dimensions on these drawings shall have precedence over scaled dimensions. Contractors shall verify and be responsible for all dimensions and conditions shown on drawings and specifications. Contractors shall notify Advance Signs & Service, Inc. of any discrepancies. Shop drawings must be submitted to Advance Signs & Service, Inc. for approval prior to proceeding with fabrication and installation. Copyright © 2010 Advance Signs & Service, Inc.

CLIENT

E&M Concrete Inc.

PROJECT

E&M Concrete Inc.

PROJECT LOCATION

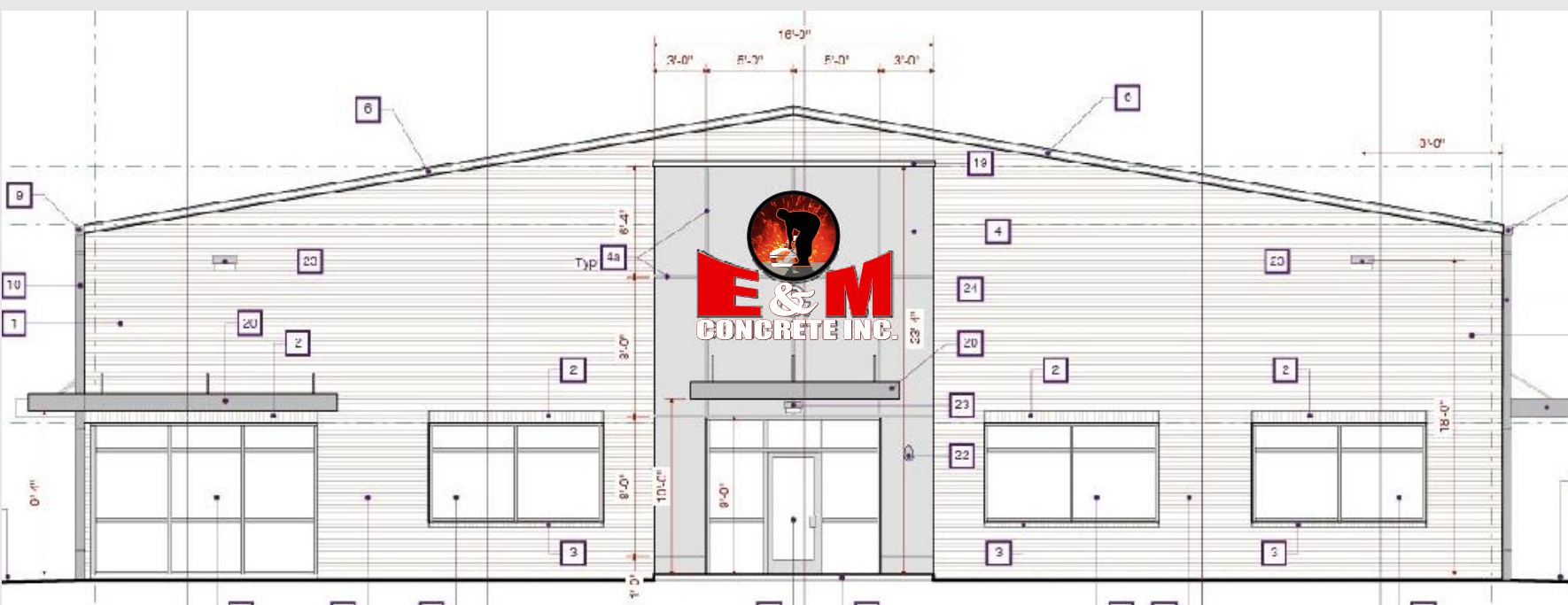
308 Jarco Drive
Fuquay-Varina, NC

DESIGNED BY

MICHAEL AKINS
michael.akins@advancesignservice.com

COLORS / FINISHES / MATERIAL

v2



DATE	DESCRIPTION