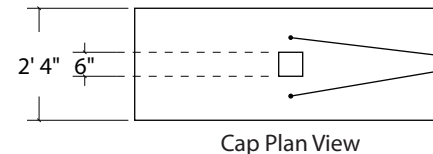
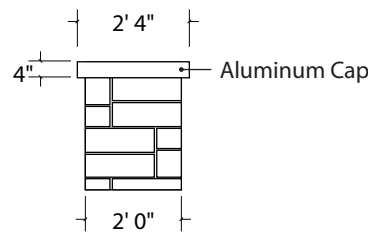
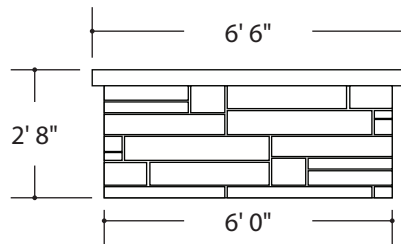
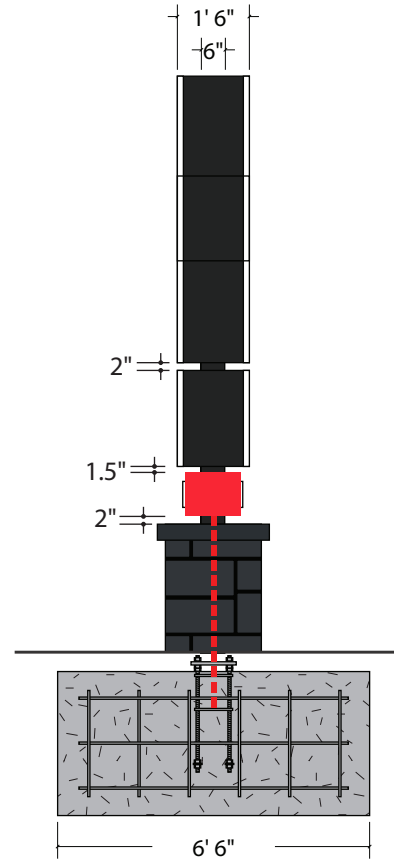
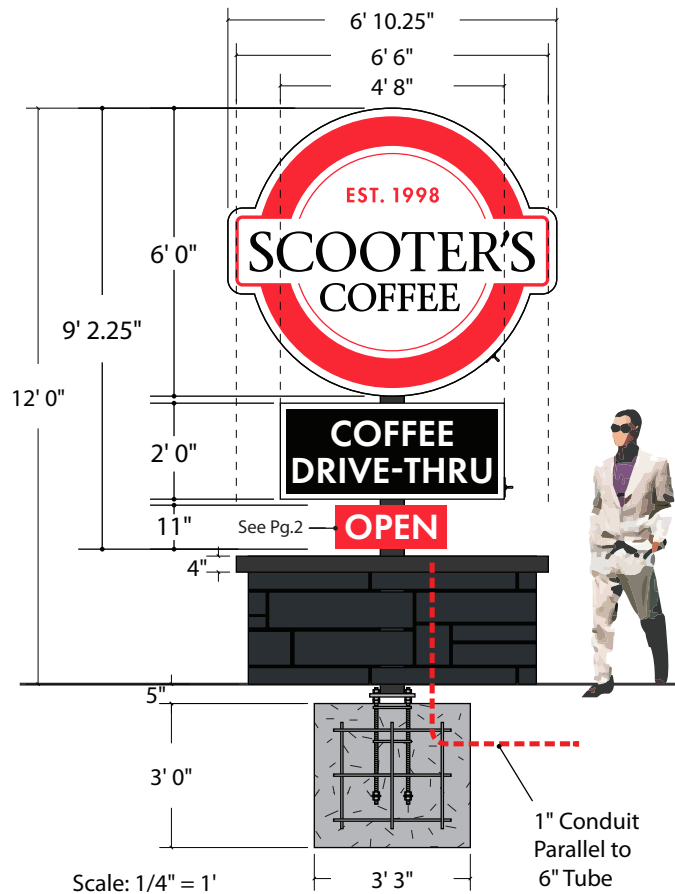


Option 1 - Red OPEN Cabinet



MATERIALS

Upper Cabinet (Scooter's Coffee)

0.080" Thk. Aluminum X-Brace Returns
 0.063" Thk. Aluminum Skins
 0.040" Thk. Aluminum Retainers
 1/8" Thk. Aluminum Internal Plate Structures
 3/16" Thk. Lexan Faces
 1st Surface PSV Graphics

Lower Cabinet (Coffee Drive Thru)

1" Aluminum Angle Frame
 .063" Thk. Aluminum Skins
 .040" Thk. Aluminum Retainers
 3/16" Thk. Lexan Faces
 1st Surface PSV Graphics

Illumination

White LEDs
 Class II Power Supply

COLORS

Skins painted Black, Satin Finish.
 Retainers painted White, Satin Finish.
 Square Tube painted Black, Satin Finish.
 Translucent White Lexan.
 PSV to match:
 Black
 Translucent Tomato Red (230-43), PMS 1788C

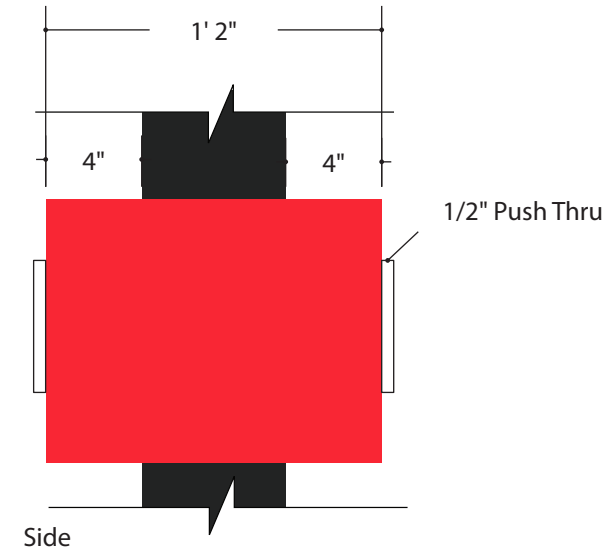
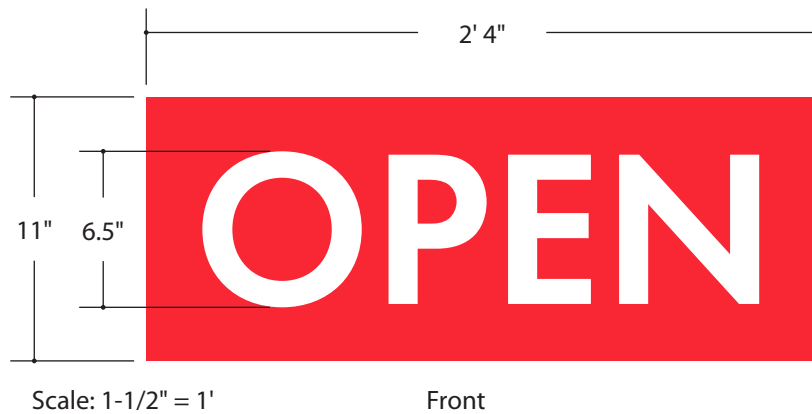
NOTES

Concrete Base & Aluminum Cap Provided by Others
 Stone Color: Sherwin Williams Inkwell 6992
 Electrical Conduit ran Parallel to 6" Tube.

POLE / FOOTING

6" Steel Sq. Tube

Print 6921JK-5	Date 6/11/25	OQ# 52933	Line 3	SP LS	Sign Type Monument
CLIENT APPROVAL					Location See Site Plan
Title Scooter's Coffee					Size 9' 2.25" x 6' 10.25" (62.97 sqft), 12' OAH
City/State Cameron, NC					Description Illuminated D/S Pylon w/
Customer Scooter's Coffee					Lexan Faces & PSV Graphics
Int. Note					
AUTHORIZED SIGNATURE		DATE			



MATERIALS

1" Aluminum Angle Frame
 .063" Thk. Aluminum Skins
 1/8" Thk. Aluminum CAD-CUT Faces.
 3/4" Thk. Acrylic Push-Through Letters
 1/8" Thk. Acrylic Backer

Illumination

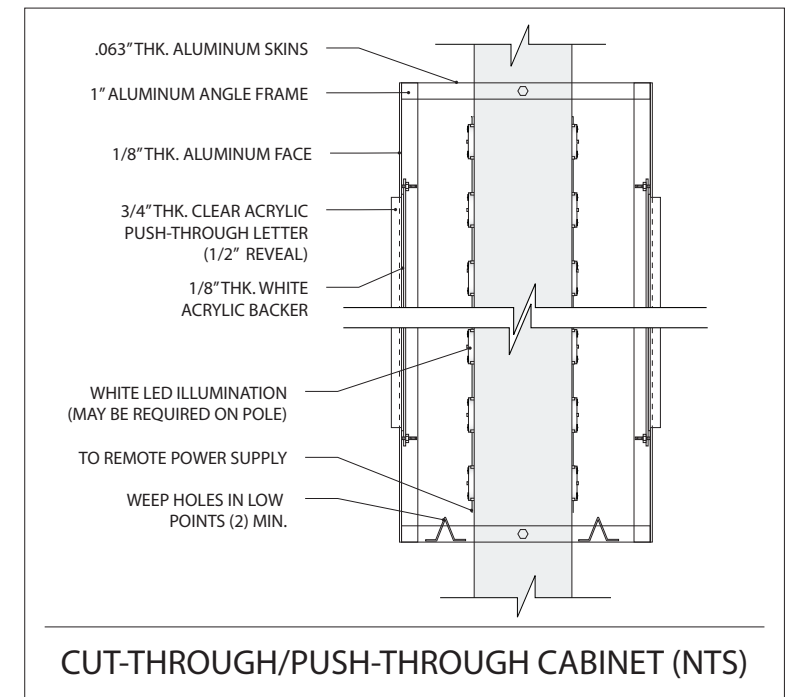
White LEDs
 Class II Power Supply

COLORS

Skins & Faces painted to match Tomato Red (230-43), PMS 1788C
 Clear Acrylic Push-Through Letters
 White Acrylic Backer

NOTES

Sign will have it's own dedicated curcuit to be on when store is open



PROCEED TO PRODUCTION

Print 6921JK-5

Date 6/11/25

Installation Method

ES# 52933

Line 3

Ⓢ = Critical Dimension for Internal Quality Control

UL FILE NO. E70436

AUTHORIZED SIGNATURE

DATE

Amps

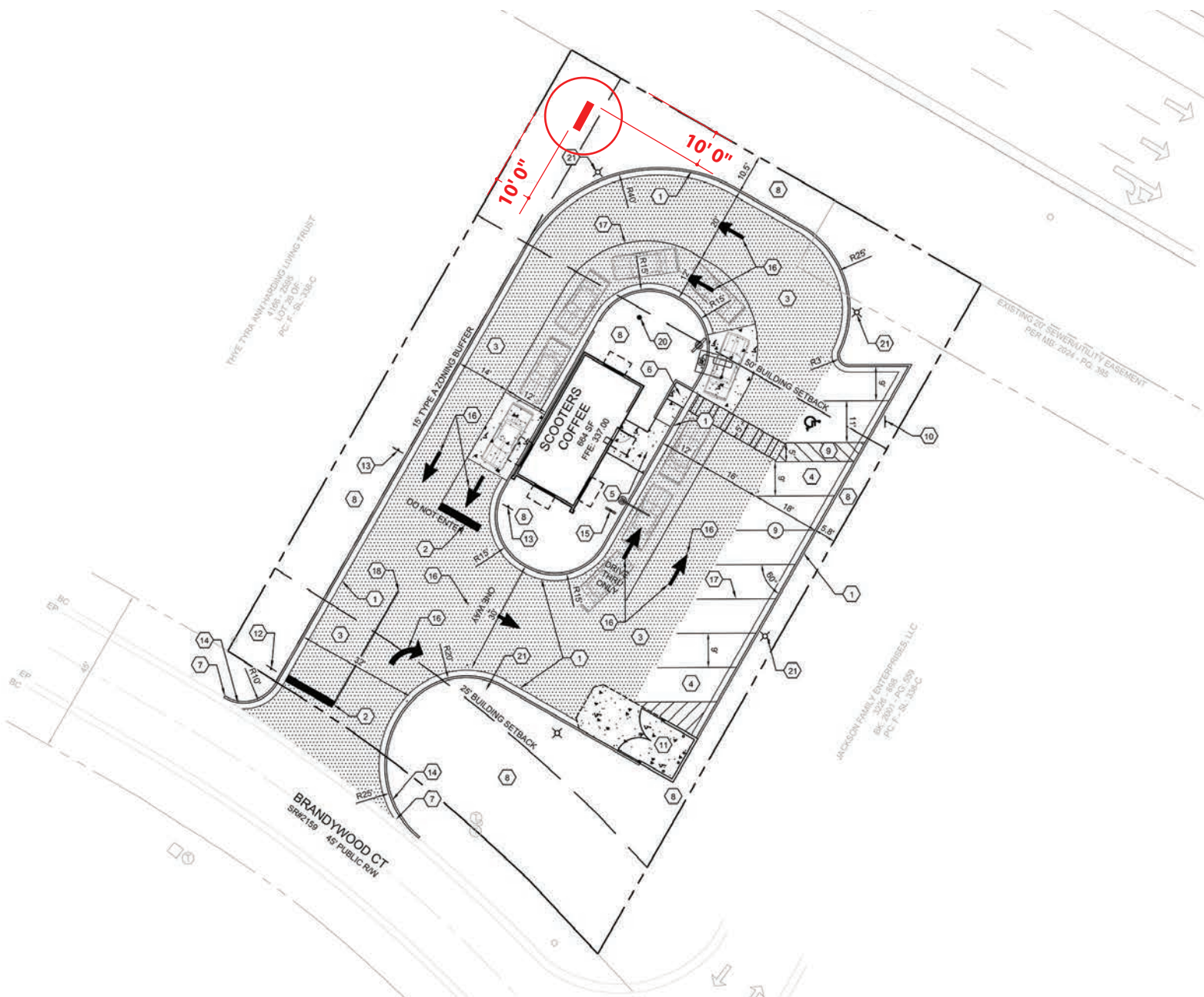
Volts

2 of 3

This drawing contains original elements created by Lauretano Sign Group, Inc., is property of Lauretano Sign Group, Inc. and is subject to all applicable copyright laws. This drawing may not be used in any way until full payment is received by Lauretano Sign Group, Inc. It is intended for review and approval purposes only, and is not to be reproduced, copied, transmitted by electronic media, or exhibited in any fashion to anyone outside your organization without the expressed written consent of Lauretano Sign Group, Inc.

LAURETANO
 SIGN GROUP

1 Tremco Drive., Terryville, CT 06786 • Phone: 860.582.0233
 signs@lauretano.com www.lauretano.com



Site Plan (NTS)

PROCEED TO PRODUCTION	Print 6921JK-5	Date 6/11/25	Installation Method	
	ES# 52933	Line 3		
AUTHORIZED SIGNATURE	DATE	6 = Critical Dimension for Internal Quality Control UL FILE NO. E70436		
			Amps	Volts

LAURETANO
 SIGN GROUP

1 Tremco Drive., Terryville, CT 06786 • Phone: 860.582.0233
 signs@lauretano.com www.lauretano.com