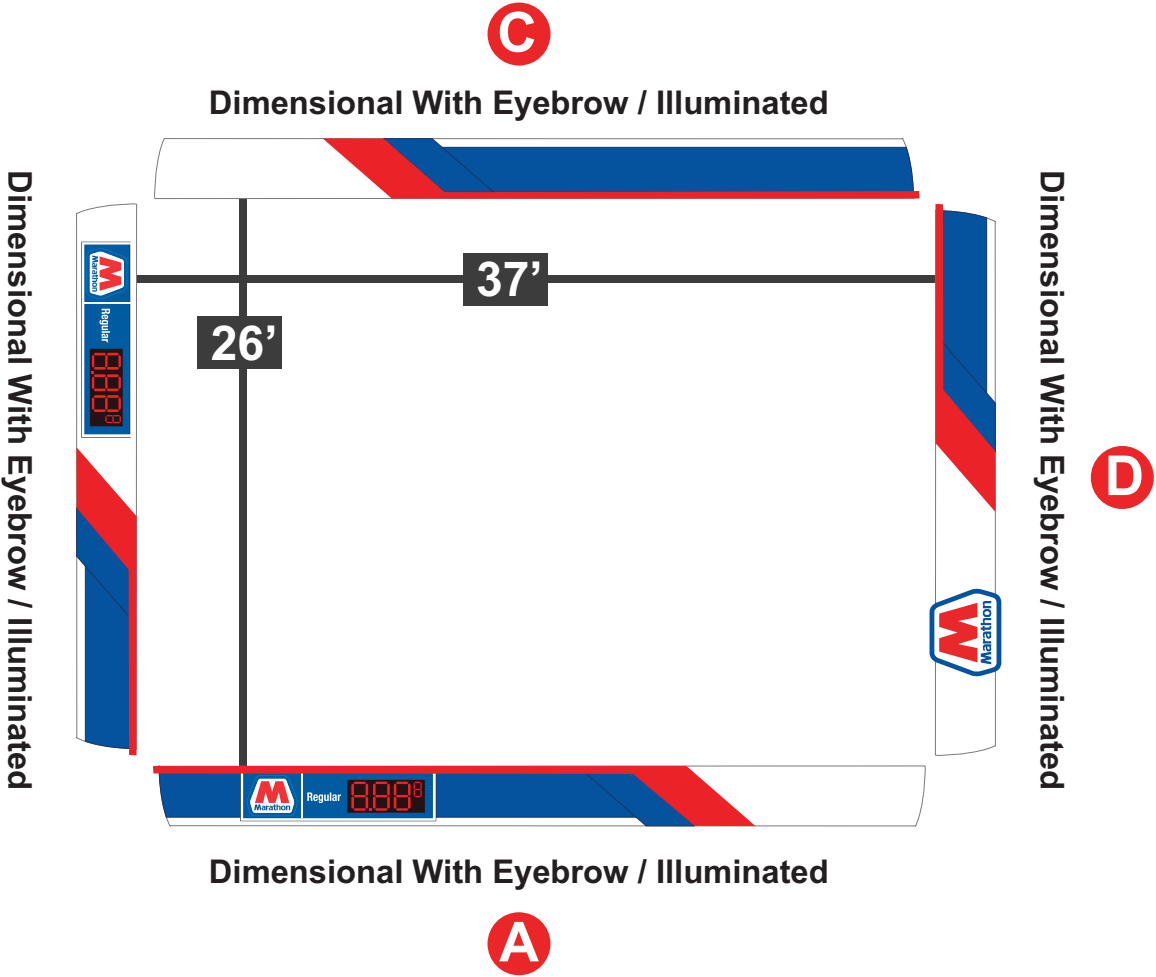


Proposed Overview



Road View



Canopy Information

Install
Marathon Endurance Dimensional Fascia System with Illuminated Eyebrow on All Sides of Canopy
(1) Marathon ID Logo Signs
(2) Marathon Canopy Pricer Signs

PROPOSED

37' x 36" / Dimensional With Eyebrow / Illuminated

A

M

Marathon

Regular

8.88⁸

24.38 Sq Ft

2.5 x 9.75

26' x 36" / Dimensional With Eyebrow / Illuminated

B

M

Marathon

Regular

8.88⁸

24.38 Sq Ft

2.5 x 9.75

37' x 36" / Dimensional With Eyebrow / Illuminated

C

26' x 36" / Dimensional With Eyebrow / Illuminated

D

M

Marathon

15.26 Sq Ft

3.5 x 4.36

EXISTING

Remove: Existing Canopy Pricers from Fascia

A

16.10 Sq Ft

3.02 x 5.33



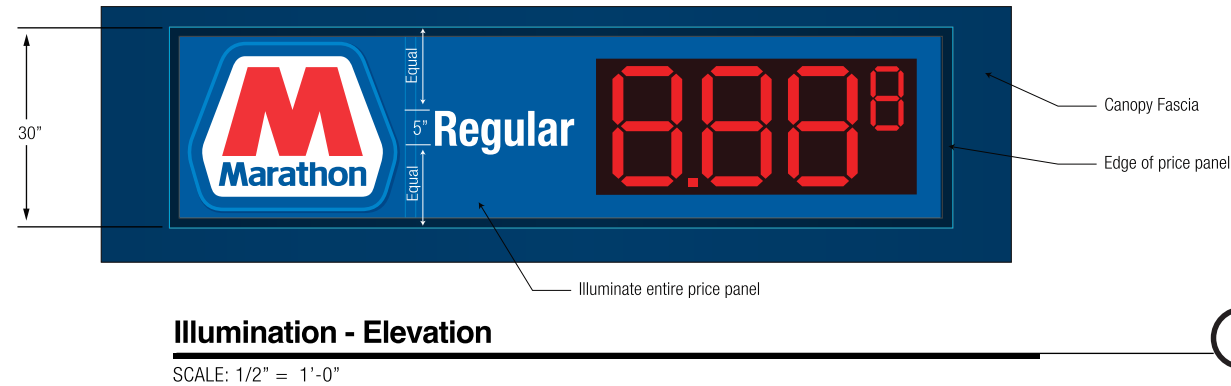
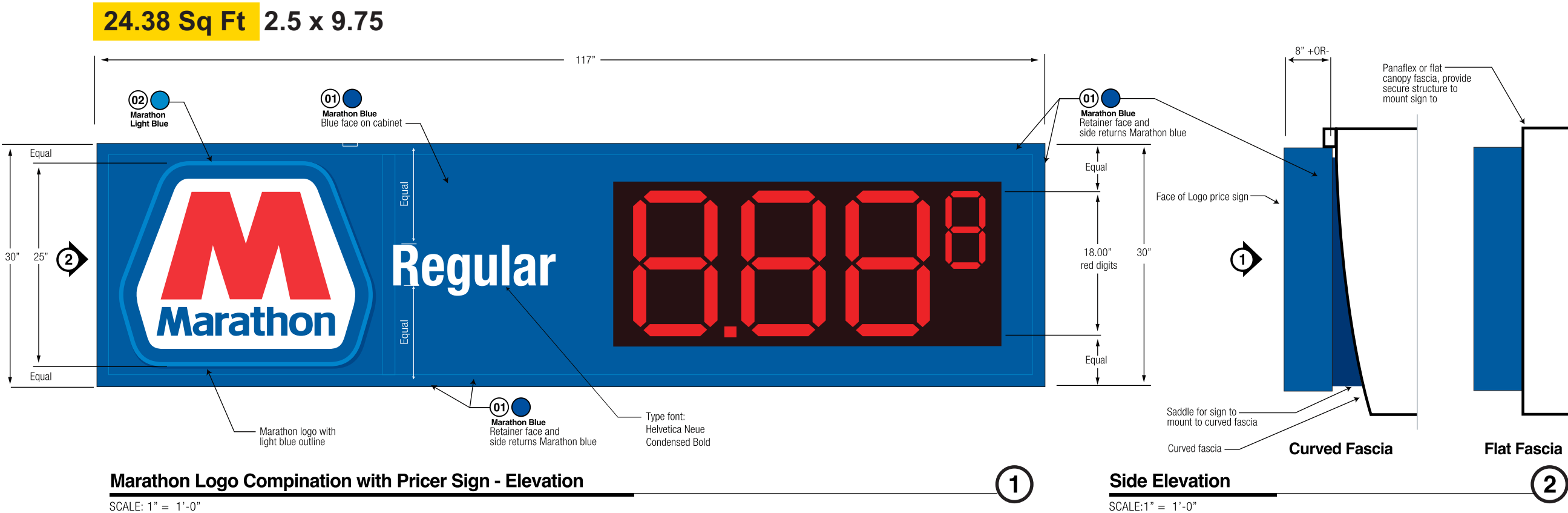
B

16.10 Sq Ft

3.02 x 5.33

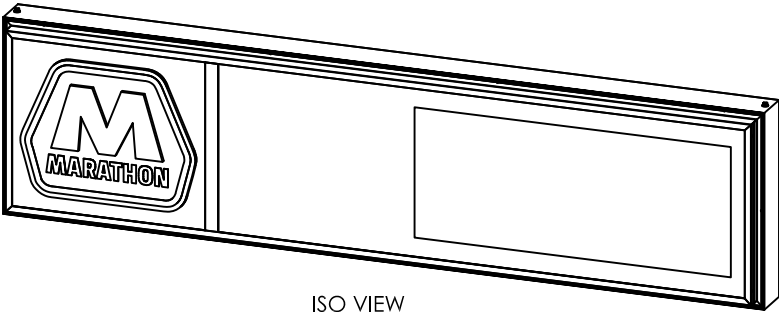


Canopy Sign Details

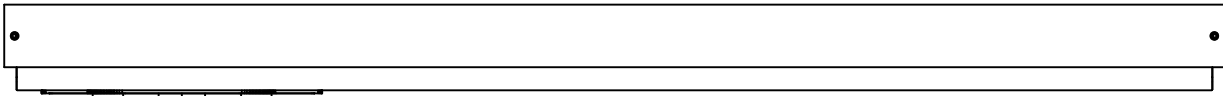


Canopy Sign Details

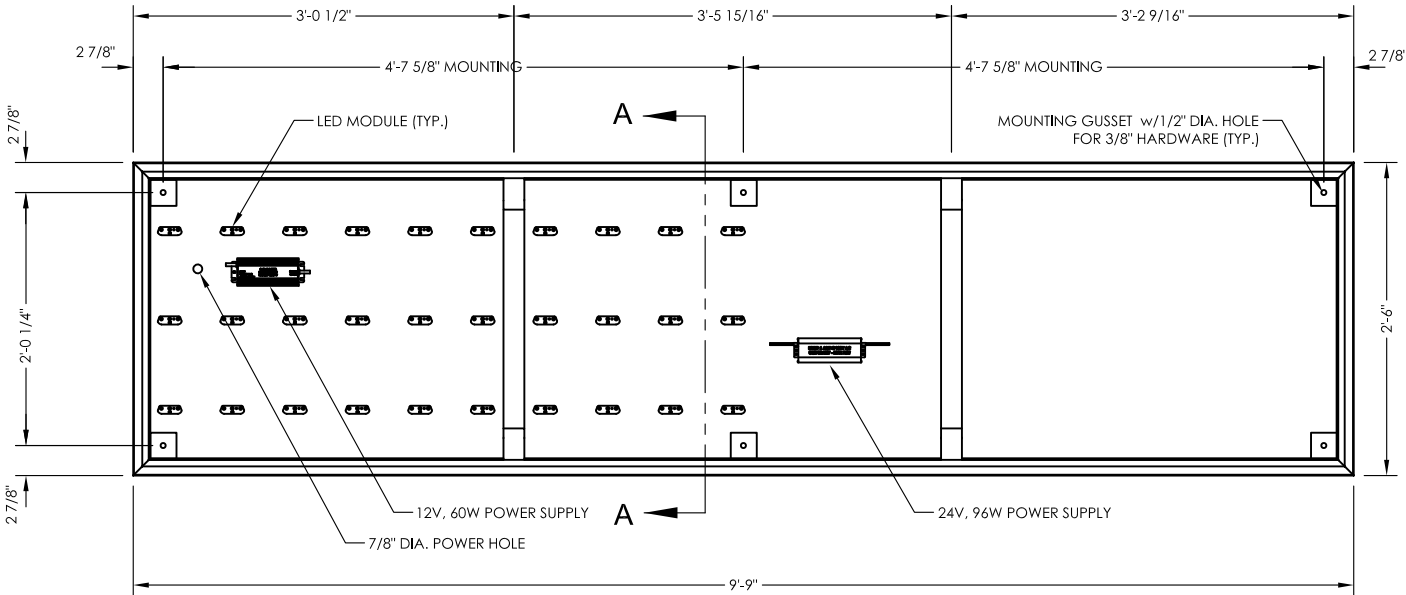
MARATHON 2'-6" X 9'-9" BOX SIGN



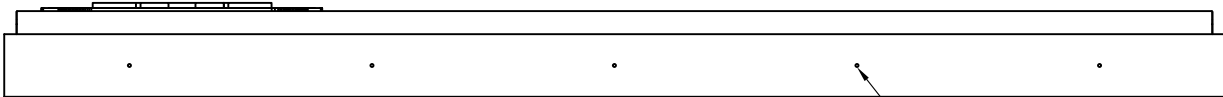
ISO VIEW
SCALE 1:16



TOP VIEW
SCALE 1:16



FRONT VIEW
SCALE 1:16



WEEP HOLES

BOTTOM VIEW
SCALE 1:16

SIGN SPECIFICATIONS

AREA OF SIGN - SQUARED: 24.38 SQ FT
AREA OF VISIBLE OPENING: 20.042 SQ FT
LUMENS: 3900
LUMENS PER SQ FT: 159.9672
LEDs: (15 FT) DAYLIGHT
POWER SUPPLIES:

- (1) 12V, 60W POWER SUPPLY
- (1) 24V, 96W 0.67 AMPS @ 120VAC

LED PRICELINE DRAW:

1.4 AMPS @ 120VAC (1) 20 AMP CIRCUIT,
60HZ UL 48 & NEC COMPLIANT EST

WEIGHT OF UNCRATED SIGN: 88.78 LBS

OVERALL DIMENSIONS OF SIGN:

HEIGHT: 30 IN.
WIDTH: 117 IN.
DEPTH: 6 IN.

SIGN WILL BE SERVICEABLE BY DOOR

GENERAL NOTES
INSTALLER TO PROVIDE COMPLETION PHOTOS OF MOUNTING/CONNECTION POINTS, WIRE ROUTING AND OVERALL ELEVATION.

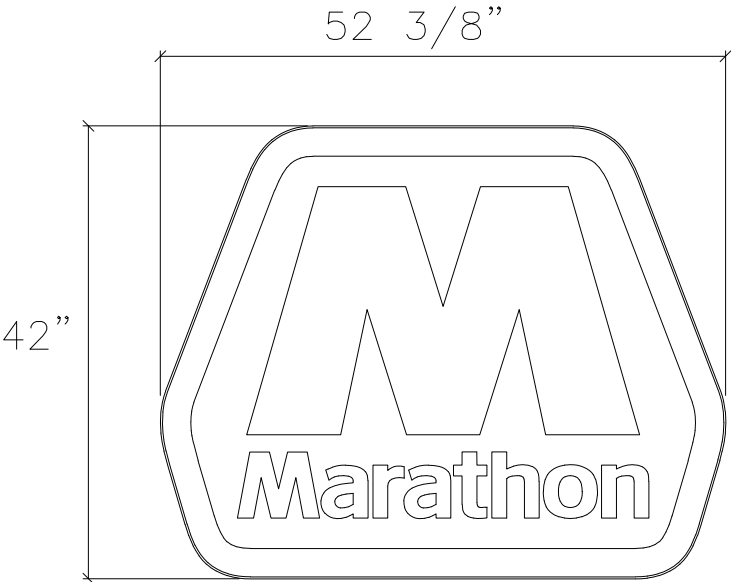
THIS SIGN IS INTENDED TO BE INSTALLED IN ACCORDANCE WITH THE REQUIREMENTS OF ARTICLE 600 OF THE NATIONAL ELECTRIC CODE AND/OR OTHER APPLICABLE LOCAL CODES. THIS INCLUDES PROPER GROUNDING AND BONDING OF THE SIGN.

INSTALLER TO VERIFY SIGN IS PROPERLY INSTALLED, CONNECTED AND GROUNDED.

THIS DRAWING IS FOR INSTALLATION PURPOSES ONLY AND NOT TO BE USED FOR MANUFACTURING.

- INSTALLATION INSTRUCTIONS**
1. OPEN PACKAGING CAREFULLY AND INSPECT FOR DAMAGE. IF DAMAGE IS FOUND, CLAIM MUST BE FILED WITHIN 5-DAYS WITH SHIPPING AGENT.
 2. DETERMINE SIGN LOCATION AND TAPE UP THE PROVIDED TEMPLATE ON THE SURFACE TO WHICH IT WILL BE INSTALLED, RECEIVE CONFIRMATION FROM CLIENT OR CONTRACTOR.
 3. LAYOUT AND PRE-DRILL ALL REQUIRED MOUNTING AND ELECTRICAL HOLES.
 4. FILL ALL HOLES WITH SILICONE PRIOR TO MOUNTING THE SIGN.
 5. ALIGN SIGN MOUNTING HOLES TO MATCHING PRE-DRILLED HOLES WHILE INSERTING FASTENERS THROUGH SIGN CABINET, WALL AND BLOCKING (AS REQ'D). FASTEN WITH HARDWARE. USE PVC SLEEVES TO PROTECT WALL FINISH OVER SHEATHING (IF NECESSARY).
 6. MAKE FINAL ELECTRICAL HOOK UP TO PRIMARY WIRING OF POWER SUPPLIES THROUGH DRILLED ELECTRICAL HOLES.
 7. TEST LIGHT FOR PROPER FUNCTION AND ILLUMINATION.
 8. PERFORM TOUCH-UP AS REQUIRED.
 9. CLEAN INSTALLATION WORK SITE OF ALL EXCESS MATERIALS AND DEBRIS. DO NOT DISCARD ANY MATERIAL OR DEBRIS INTO ON SITE DUMPSTERS.

Canopy Sign Details



FORMED CANOPY CS SIGN ELEVATION VIEW

15.26 Sq Ft 3.5 x 4.36



ATTACHED FACE TO RETURN
USING #6 PAN HD SCREWS

1"x1/2"x.050 ALUM. RETURN
TO SIT ON TOP OF ALUM. BACK

FORMED AND EMBOSSED
CAP OVER FACE

FORMED AND EMBOSSED
CAP OVER FACE
w/ 2nd SURF. DECORATION
(ILLUMINATED RETURNS)

.063 ALUM. BACK

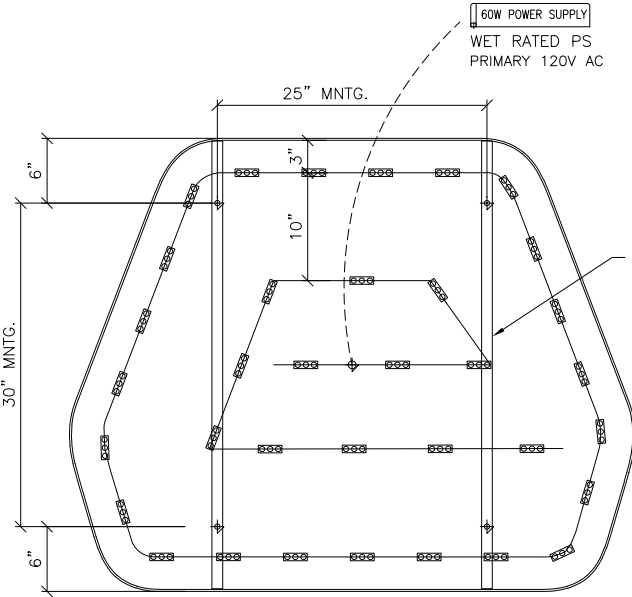
LED ILLUMINATION
(SEE LED LAYOUT)

ELECTRICAL LEADS TO SUPPLY BOX
EXIT BACK OF SIGN

BACK OF SIGN
TO BE PAINTED
MARATHON BLUE

FASTENERS PROVIDED BY INSTALLER
PER FIELD CONDITIONS

1/4" DRAIN HOLES
@ LOW POINT OF BACK
(AS NEEDED)



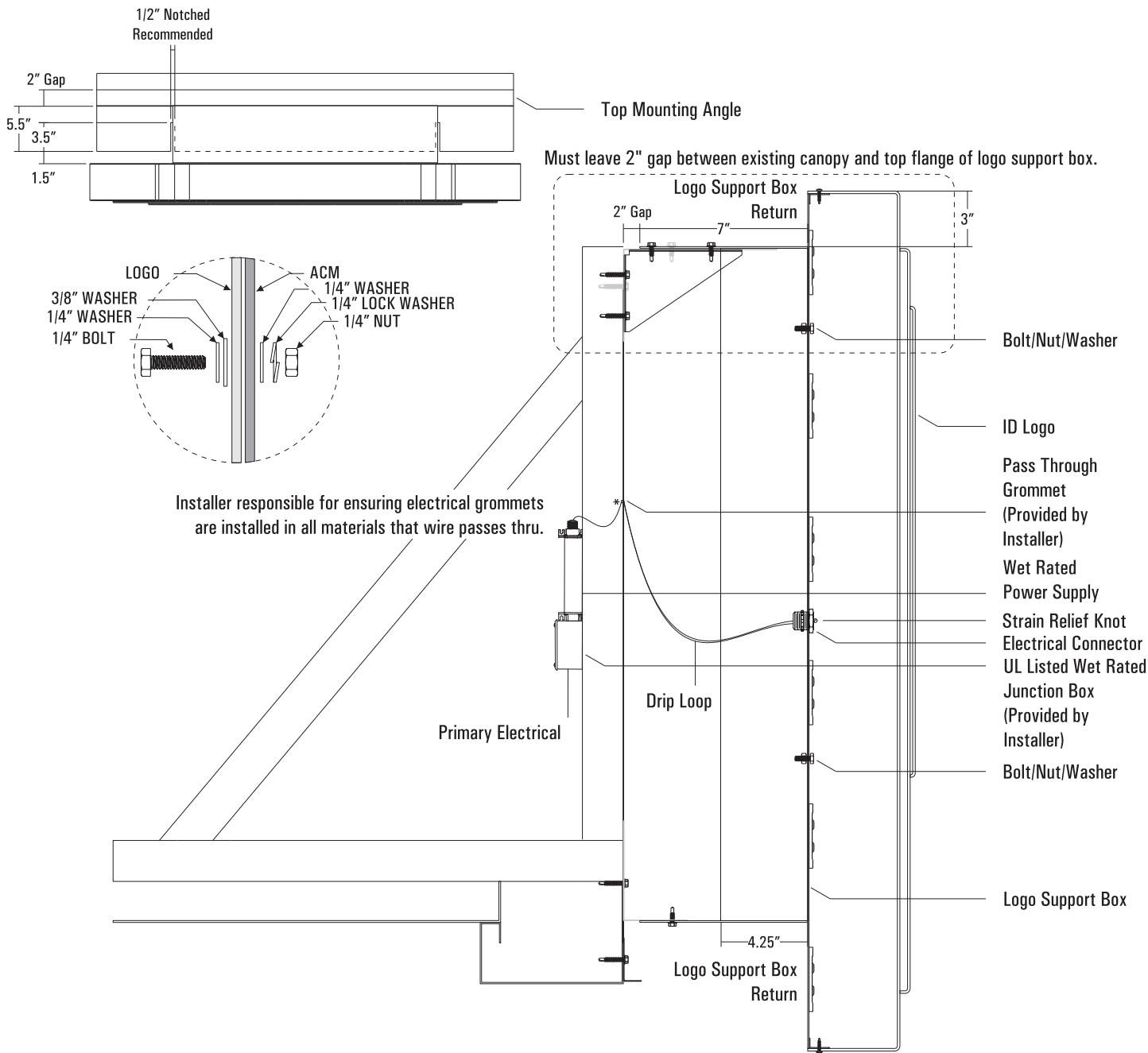
ELECTRICAL / LFD LAYOUT DETAIL VIEW

ESTIMATED PRODUCT B.O.M. PER SIGN:

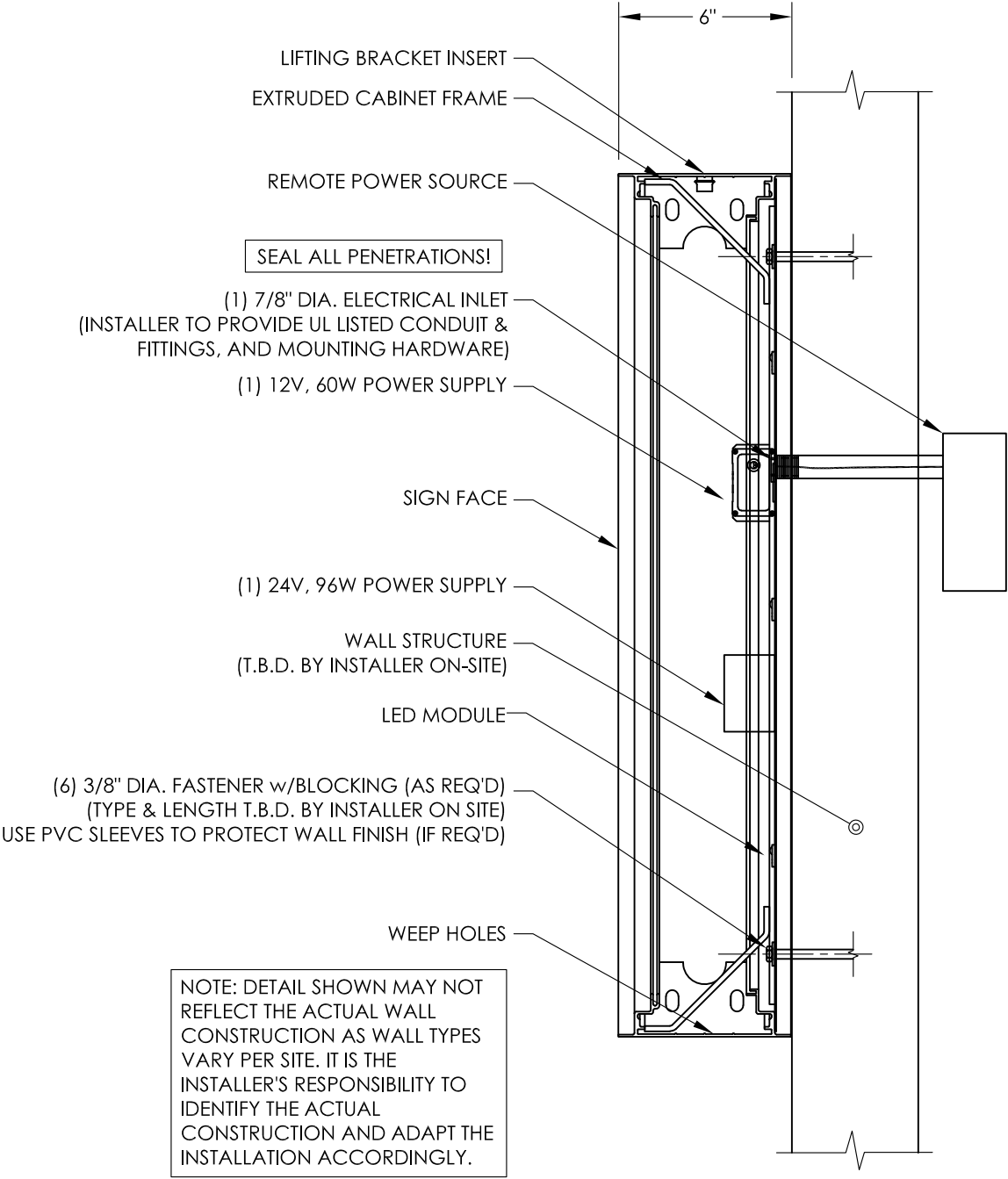
- 35 VL4 STANDARD (7200K) MODULES - 25 FT
- 1 EACH MODULAR 60 POWER SUPPLY 12VDC
- 1 EACH 100' ROLL OF JACKETED CABLE

- 1) VL4 STANDARD (7200K) LAID OUT AT 1.4 MOD/FT,
- 1) EACH STANDARD 60W POWER SUPPLY CAN RUN UP TO 40FT/56 MODS VL4 STANDARD (7200K) MODULES
- 3) LAYOUT BASED ON A S/F CABINET 4.5" CAN DEPTH

Canopy Sign Details



Shield Attachment Detail



SECTION "A-A"
SCALE 1:8

Pricer Attachment Detail

Building Information

Remove Existing Short Stop Face From Building Sign

Install (1) New 4x8 Birdie Logo Face Replacement for Existing Sign Cabinet

Proposed

