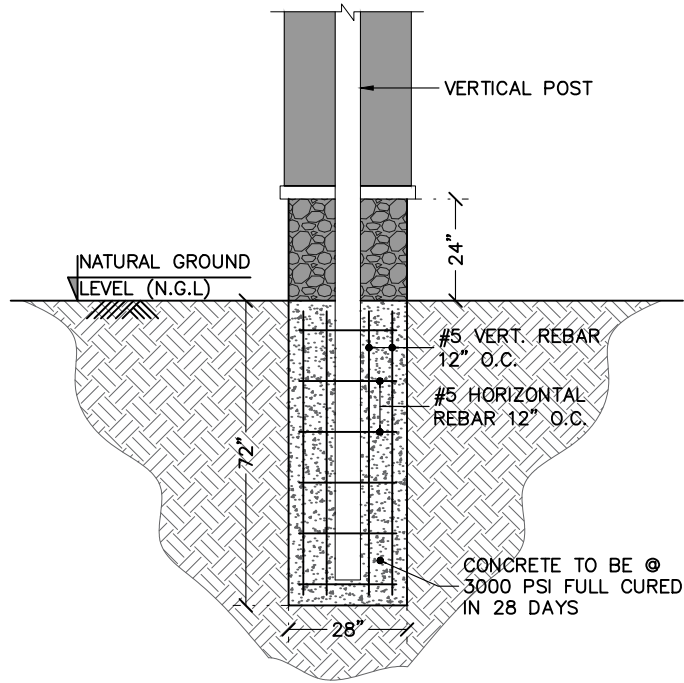


CONCRETE & REINFORCEMENT

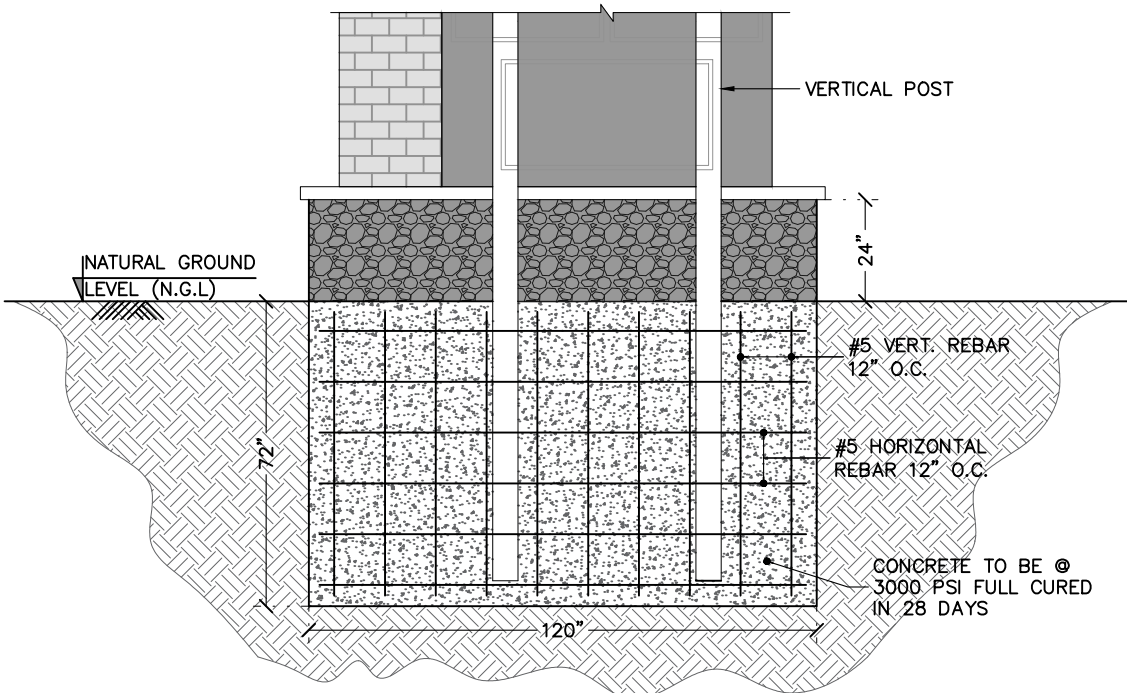
- 1. MINIMUM 28-DAY COMPRESSIVE STRENGTH (fc') SHALL BE 3,000 PSI. THE MAXIMUM WATER TO CEMENT RATIO SHALL BE 0.45 BY WEIGHT. A MINIMUM OF 5-3/4 BAGS OF CEMENT SHALL BE USED PER CUBIC YARD WITH A SLUMP OF 4" +/- 1.
- 2. REINFORCEMENT TO BE ASTM A615 GR 60, Fy=60 KSI UNO
- 3. CALCIUM CHLORIDE OR ADDED CHLORIDE IS NOT PERMITTED
- 4. VIBRATION: ALL REINFORCED CONCRETE SHALL BE CONSOLIDATED WITH MECHANICAL VIBRATORS
- 5. CONCRETE CONSTRUCTION SHALL BE IN ACCORDANCE WITH ACI 318-14
- 6. STEEL SHAPES SHALL CONFORM TO THE FOLLOWING

FOUNDATIONS

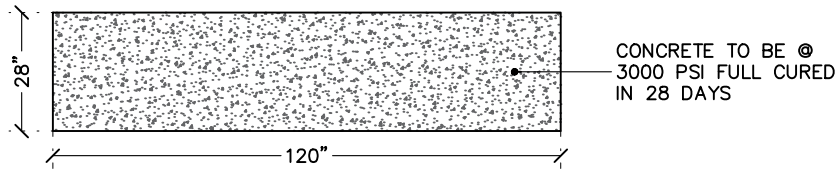
- 1. CONCRETE POURED INTO CONSTRAINED EARTH EXCAVATIONS MUST CURE UNDER PROPER CONDITIONS FOR A MINIMUM OF 7 DAYS PRIOR TO SIGN BOX INSTALLATION. (EXCEPTION: IF THE OVERALL HEIGHT OF THE SIGN IS LESS THAN 20 FEET AND THE SIGN IS ADEQUATELY BRACED AGAINST WIND LOADS FOR A MINIMUM OF 4 DAYS, THE BOX MAY BE INSTALLED THE SAME DAY AS THE FOOTING IS POURED)
- 2. FOOTINGS MUST BE POURED AGAINST UNDISTURBED EARTH. SOIL BACKFILL IS UNACCEPTABLE. WHEN A SONOTUBE IS USED AS THE FORM, 3/4" BLUESTONE OR CONCRETE SHALL BE USED TO BACKFILL THE SPACE BETWEEN THE SONOTUBE AND UNDISTURBED EARTH.
- 3. COLD WEATHER PLACEMENT: PROTECT CONCRETE WORK FROM PHYSICAL DAMAGE OR REDUCED STRENGTH THAT COULD BE CAUSED BY FROST, FREEZING ACTIONS OR LOW TEMPERATURES. DO NOT POUR CONCRETE DURING OR WHEN FREEZING TEMPERATURES ARE ANTICIPATED WITHIN 3 DAYS OF POUR.
- 4. REINFORCEMENT IS NOT REQUIRED FOR DIRECT BURIAL TYPE SIGN
- 5. FOR ANCHOR BOLT/ BASE PLATE - SQUARE FOOTINGS, PROVIDE A MINIMUM OF #5 VERTICAL REBAR @ 12" O.C., 4" OFFSET FROM PERIMETER, TOP AND BOTTOM OF FOOTING. PROVIDE #3 HORIZONTAL TIES @ 12" O.C. UNLESS OTHERWISE NOTED.
- 6. FOR ANCHOR BOLT/ BASE PLATE - ROUND FOOTINGS, PROVIDE A MINIMUM OF SIX (6) VERTICAL #5 REBARS, EVENLY SPACED, 4" OFFSET FROM FOOTING PERIMETER & #3 HORIZONTAL TIES, 12" O.C. Unless otherwise noted.
- 7. ANCHOR BOLTS SHALL BE TIED TO REBAR CAGE AT A MINIMUM OF TWO LOCATIONS PER ANCHOR BOLT
- 8. FOOTING DESIGN ASSUMES FOOTING SHALL BE EXCAVATED AND POURED IN UNDISTURBED NATURAL EARTH, CAPABLE OF WITHSTANDING A MINIMUM 1,500 PSF VERTICAL DESIGN BEARING PRESSURE AND 150 PSF/FT OF DEPTH OF LATERAL BEARING PRESSURE BASED ON SOIL DATA OBTAINED FROM THE USGS SOIL SURVEY.
- 9. IF CLAY, SILTY - CLAY, ORGANIC OR FILL SOIL IS ENCOUNTERED UPON EXCAVATION, CONTACT ENGINEER FOR FOOTING DESIGN MODIFICATION PRIOR TO CONSTRUCTION.



SIDE ELEVATION



FRONT ELEVATION



FOUNDATION PLAN



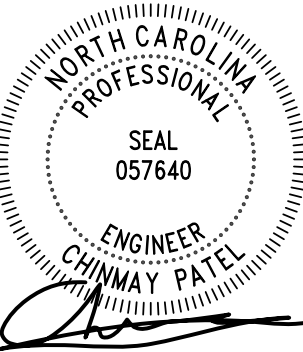
NOTES

1.) SEE MANUFACTURERS DRAWINGS FOR ADDITIONAL DETAILS AND DIMENSIONS.

- * 2018 IBC (NORTH COROLINA BUILDING CODES)
- * RISK CATEGORY II
- * 116 MPH WIND SPEED, EXP. C



CHINMAY PATEL, P.E.



Brunswick Engineering, LLC.
614 US-130, (Suite B1).
East Windsor, NJ 08520.
info@brunswickengg.com

PROJECT :
11132 Hwy 401 North, Fuquay Varina, NC 27526

DRAWN BY: NG
CHECKED BY: CP
COMM. NO.

DATE :
12/10/2024

DRAWING NO.
DWG.

DRAWING TITLE :

BAUCOM BUSINESS PLAZA

| REV # | DATE | DRAWN BY |
|-------|------|----------|
| | | |
| | | |
| | | |

1