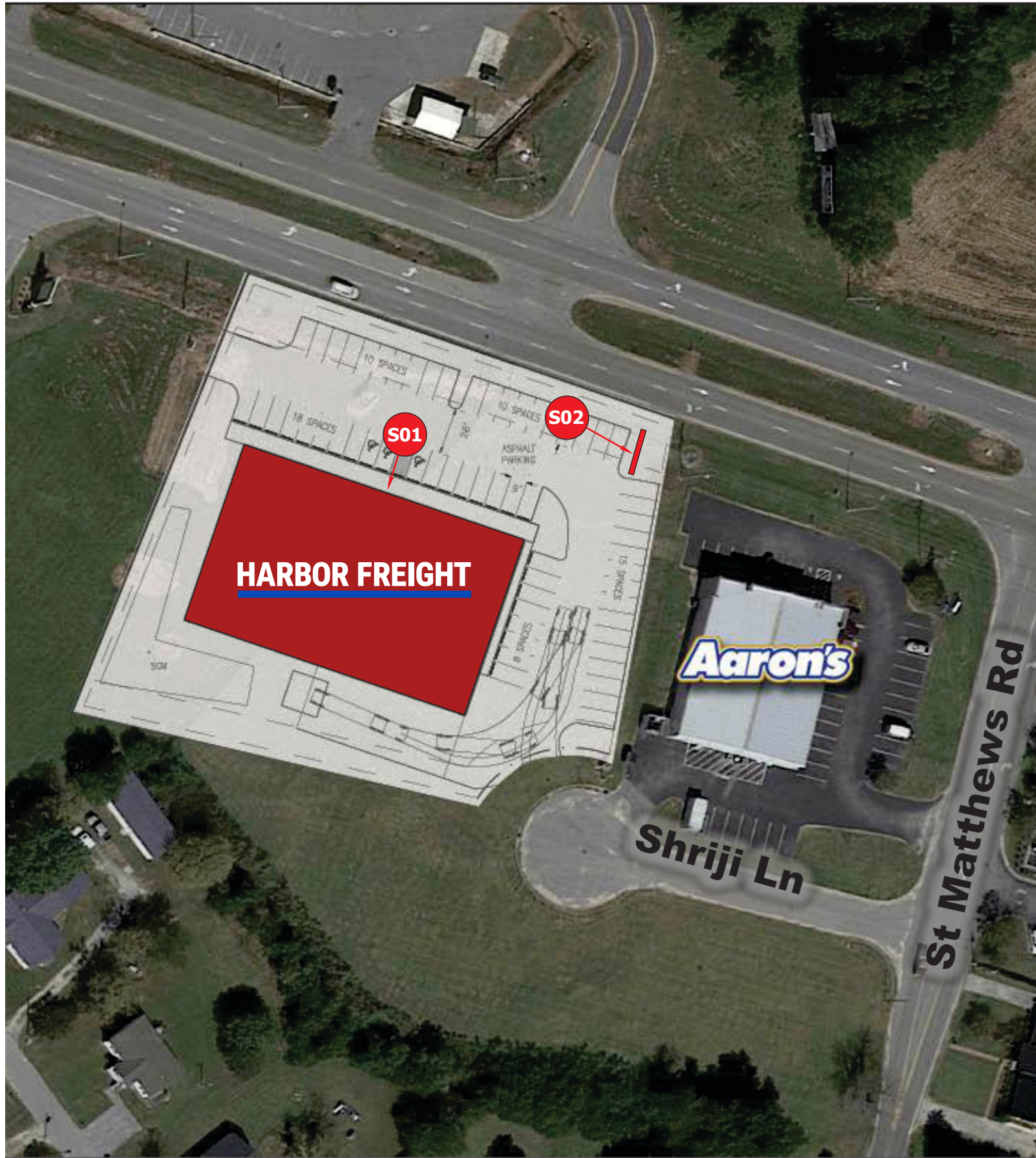


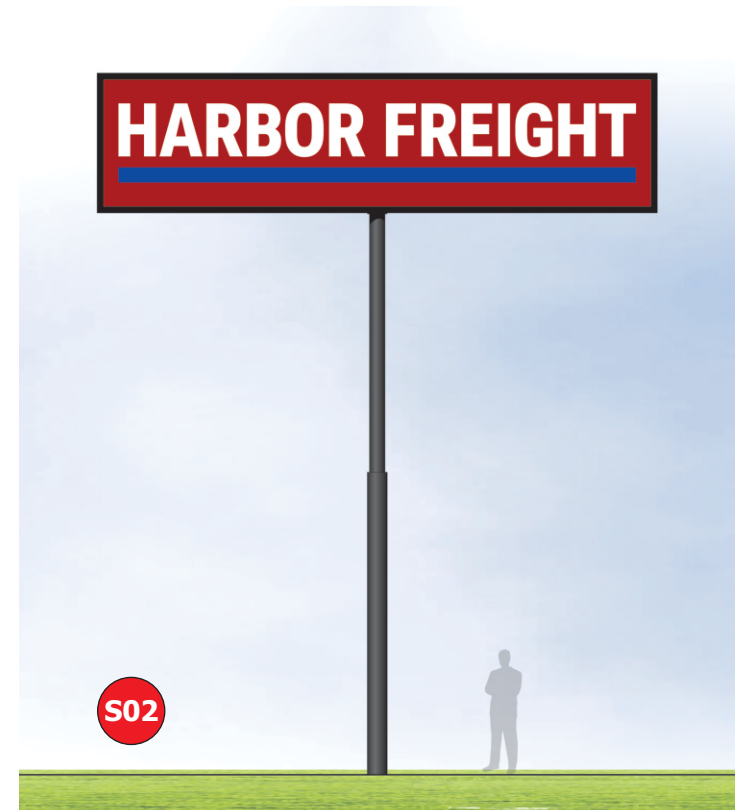
HARBOR FREIGHT TOOLS

46 Shriji Lane | Erwin NC 28339

SO #185366



S01



S02



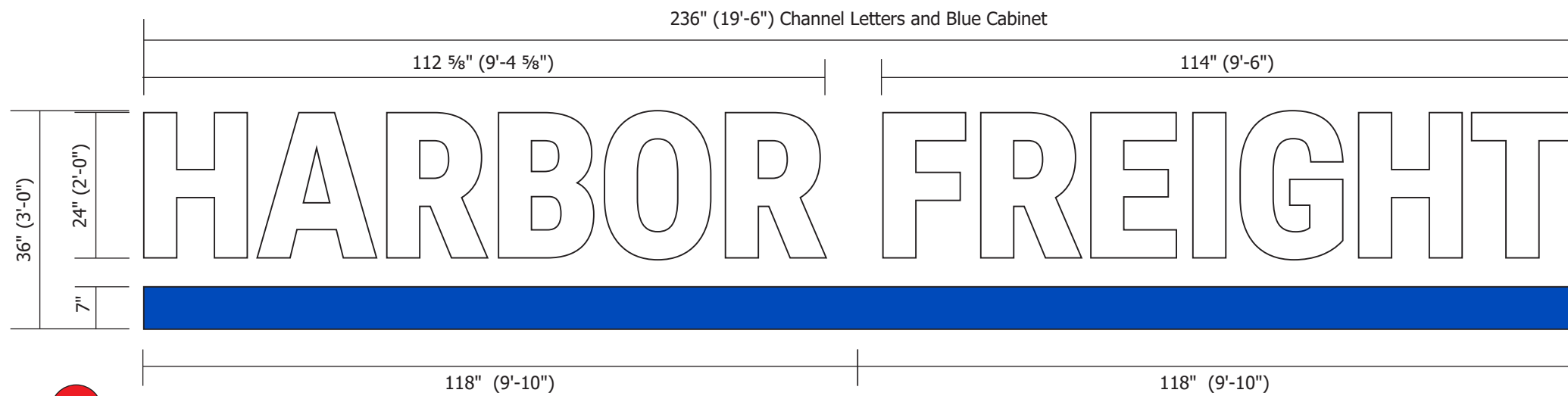
National Headquarters: 1077 West Blue Heron Blvd.
West Palm Beach, Florida 33404
800.772.7932
www.atlasbtw.com

Revisions:

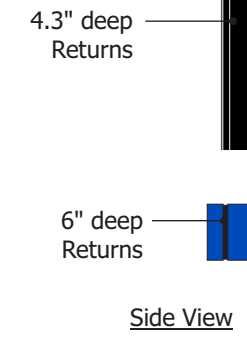
05/03/24js update elev	...
...	...
...	...
...	...
...	...

SP

PM: Jody K.	Address: 46 Shriji Lane
Drawn By: JS	City State: Erwin NC 28339
Date: 04/24/2024	Drawing Number: 185366-SP



S01 Scale: 1/2" = 1'-0"



- ELECTRICAL NOTES**
1. All materials and fasteners meet 3004.4
 2. All electrical components are UL listed, labeled and approved.
 3. Sign grounded according to NEC 6007.7
 4. Signs manufactured and listed NEC 600.3 and marked per NEC 600.4.
 5. All branch circuits per NEC 600 .5(B).1 or (B).2.
 6. All Signs controlled by photocell or time clock per FBC 13-415. (ABC).1.4.
 7. One visible 20 amp disconnect per sign per circuit per NEC 600.6(A).1

SCOPE OF WORK:

Manufacture and install set of internally illuminated (face lit) channel letters and S/F Blue Cabinet. Letters & Blue Cabinet are flush mounted to fascia.

SQUARE FOOTAGE:

Illuminated sign allowed 2 x wall length - but **NTE: 50.00 Sq Ft**
 Non Illuminated sign allowed 2 x wall length - but **NTE: 100.00 Sq Ft**

PROPOSED:

"HARBOR".....24" x 112.67" = 18.77 sq ft
 "FREIGHT".....24" x 114.00" = 19.00 sq ft
 "Blue Cabinet".....7" x 236" = 11.47 sq ft
TOTAL.....49.24 sq ft

DESCRIPTION:

- Individual formed letters with pre-finished aluminum returns.
- Acrylic letter faces are secured with 1" Jewelite trimcap.
- Channel Letter are flush mounted fascia with internal illumination by LEDs.

LETTER COLOR SCHEDULE:

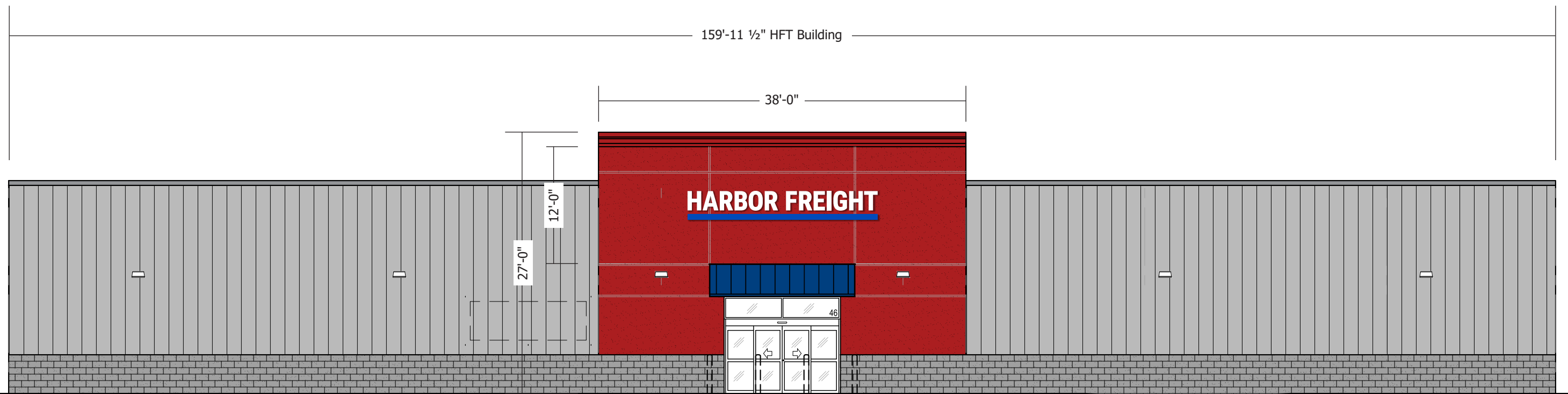
- Formed aluminum returns Satin Black (outside)/ White (inside)
- 7328 Optics LD white acrylic
- 1" Black Jewelite
- LED modules - white

DESCRIPTION:

- Blue Cabinet is aluminum extrusion with painted finish.
- (2) cabinets are butted end to end with flex faces & surface applied vinyl overlay.
- Faces have bleed face tension frame.
- Cabinets are flush mounted to fascia with internal illumination by LEDs.

BLUE COLOR SCHEDULE:

- Extruded Cabinet Painted Akzo Nobel 480-C-5 Blue (satin)
- 3M Panagraphics III Flex Face - White with Bleed Face Tension Frame
- 3M 3630-97 Bristol Blue
- LED modules - White



North Elevation - Scale: 3/32" = 1'-0"



National Headquarters: 1077 West Blue Heron Blvd.
 West Palm Beach, Florida 33404
 800.772.7932
 www.atlasbtw.com

Revisions:	
05/03/24js update elev	...
...	...
...	...
...	...
...	...

S01

PM: Jody K.	Address: 46 Shrijj Lane
Drawn By: JS	City State: Erwin NC 28339
Date: 04/24/2024	Drawing Number: 185366-S01



Scale: 1/4" = 1'-0"

<p>Scope and Description: Manufacture and install D/F Sign Cabinet and steel pipe support.</p> <ul style="list-style-type: none"> - Panagraphics III White Flex Face material. - Surface applied vinyl graphics. - Face is secured with 4" aluminum retainers. - Internally illuminated with white LEDs. - Cabinet, retainers and steel support painted black. <p>Square Footage: 7'-0" x 28'-0" = 196.0 Sq Ft</p>	<p>Colors:</p> <ul style="list-style-type: none"> Panagraphics III White Flex Face Material 3M 3630-53 Cardinal Red Vinyl 3M 3630-97 Bristol Blue White LEDs Akzo Nobel Black (gloss)
---	---

S02 Scale: 3/16" = 1'-0"

Sign Code:
NTE 200.00 Sq Ft & 35' OAH

Setback 12'-0" R/W & front property line & 10'-0" from side property lines

- ELECTRICAL NOTES**
1. All materials and fasteners meet 3004.4
 2. All electrical components are UL listed, labeled and approved.
 3. Sign grounded according to NEC 6007.7
 4. Signs manufactured and listed NEC 600.3 and marked per NEC 600.4.
 5. All branch circuits per NEC 600 .5(B).1 or (B).2.
 6. All Signs controlled by photocell or time clock per FBC 13-415. (ABC).1.4.
 7. One visible 20 amp disconnect per sign per circuit per NEC 600.6(A).1



National Headquarters: 1077 West Blue Heron Blvd.
West Palm Beach, Florida 33404
800.772.7932
www.atlasbtw.com

Revisions:	
05/03/24js update elev	...
...	...
...	...
...	...
...	...
...	...

S02

PM: Jody K.	Address: 46 Shriji Lane
Drawn By: JS	City State: Erwin NC 28339
Date: 04/24/2024	Drawing Number: 185366-S02