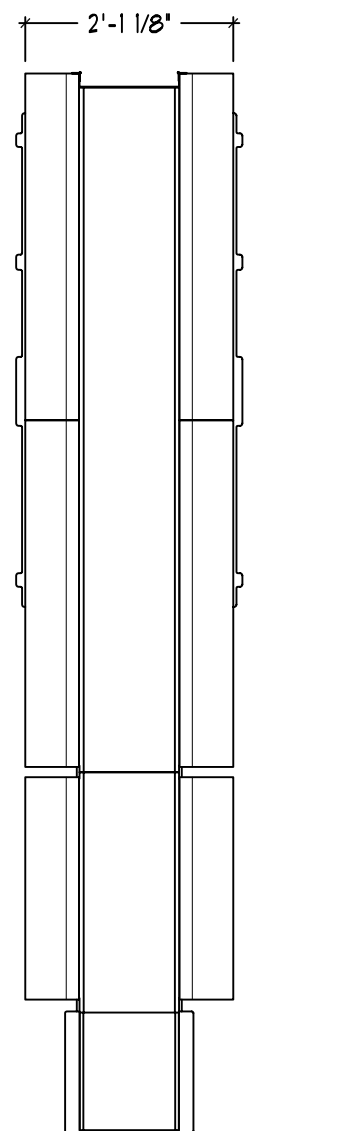


ELEVATION

OVER
TURN



SIDE VIEW

NOTES:

1. Design is based on 100 mph 3 second gust design wind speed per IBC 2006, Exposure C.
2. Spread foundation analysis is based on a safe vertical soil bearing pressure minimum of 2000 psf. Caisson foundations are based on a safe lateral soil bearing pressure of 300 psf per foot of depth. Soil report was not furnished. Allowable bearing pressure should be verified prior to placement of concrete. Do not place foundation in fill.
3. Concrete shall be mixed to attain a minimum compressive strength of 3000 psi in 28 days.
4. Support members shall be free from defects and shall meet ASTM A500 grade B with a minimum yield strength of 46000 psi for tube. ASTM A53 grade B with a minimum yield strength of 35000 psi for pipe. Plate and angle shall meet ASTM A36.
5. Structural bolts shall be zinc coated A325 unless otherwise noted.
6. Anchor bolts shall be cut from A36 round stock. Exposed surfaces shall be galvanized or coated to prevent corrosion.
7. All voids between column base plate and foundation surface shall be completely filled with high strength, non-shrink grout.
8. Welds shall be made with E70xx electrodes by persons qualified in accordance with AWS standards within the past two years.
9. Steel reinforcing bars shall conform to ASTM 615 grade 60 with deformations in accordance with ASTM A-305. Welding of reinforcing bars is prohibited.
10. This design is prototypical and should not be used for site specific applications unless reviewed and deemed suitable for use at that site by a competent Professional Engineer.

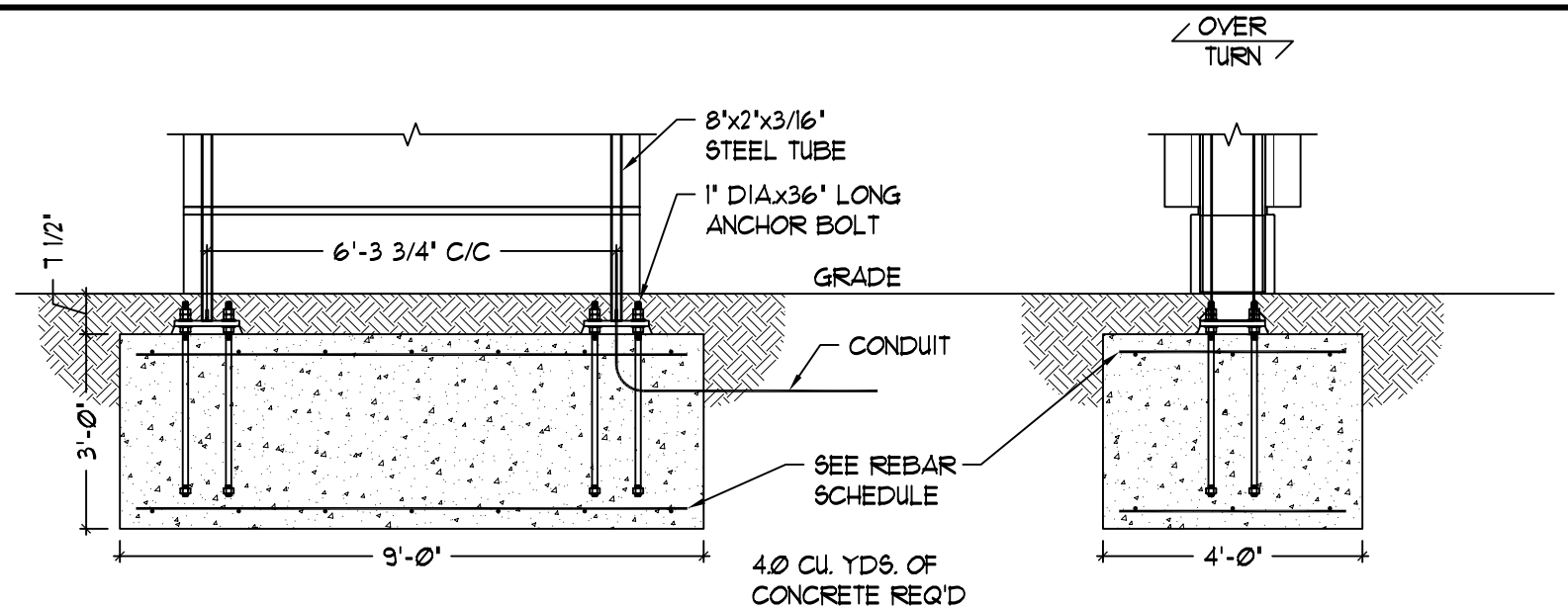
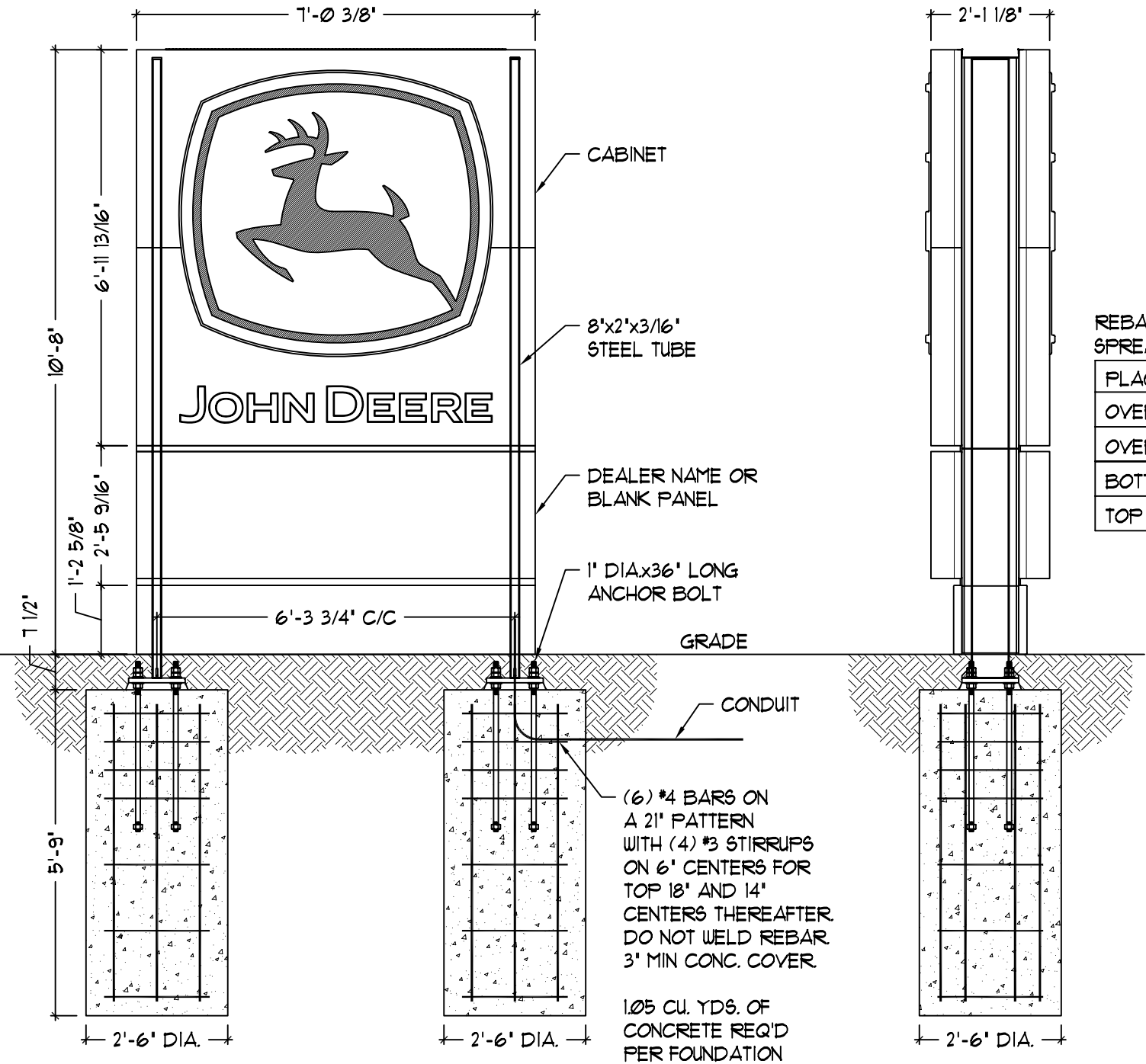


These documents and plans are the sole property of John Deere representing prototypical design drawings created specifically for dealer identification. Use of this unpublished work for any purpose other than the intended application is strongly discouraged. Disclosure or reproduction of any of the information contained herein without the written consent of the owner is strictly prohibited.

SHT.	BY:	Project No.	△	-/-	-----	--	--
1	JBL	09-0323	△	-/-	-----	--	--
OF	DATE:	Drawing No.	△	-/-	-----	--	--
3	5/29/09	B248009	△	1/2/09	Corrected Column Center to Center 4 Changed Electrical Hole Size	JBL	--
			REV.	DATE	DESCRIPTION	BY:	APR

GRAPHICS DEPICTED ARE FOR ILLUSTRATIVE PURPOSES ONLY! USE ONLY APPROVED ARTWORK FOR PRODUCTION.

DESIGNATION:
LARGE MONOLITH 11' OAH (SWL)



OPTIONAL SPREAD FOUNDATION

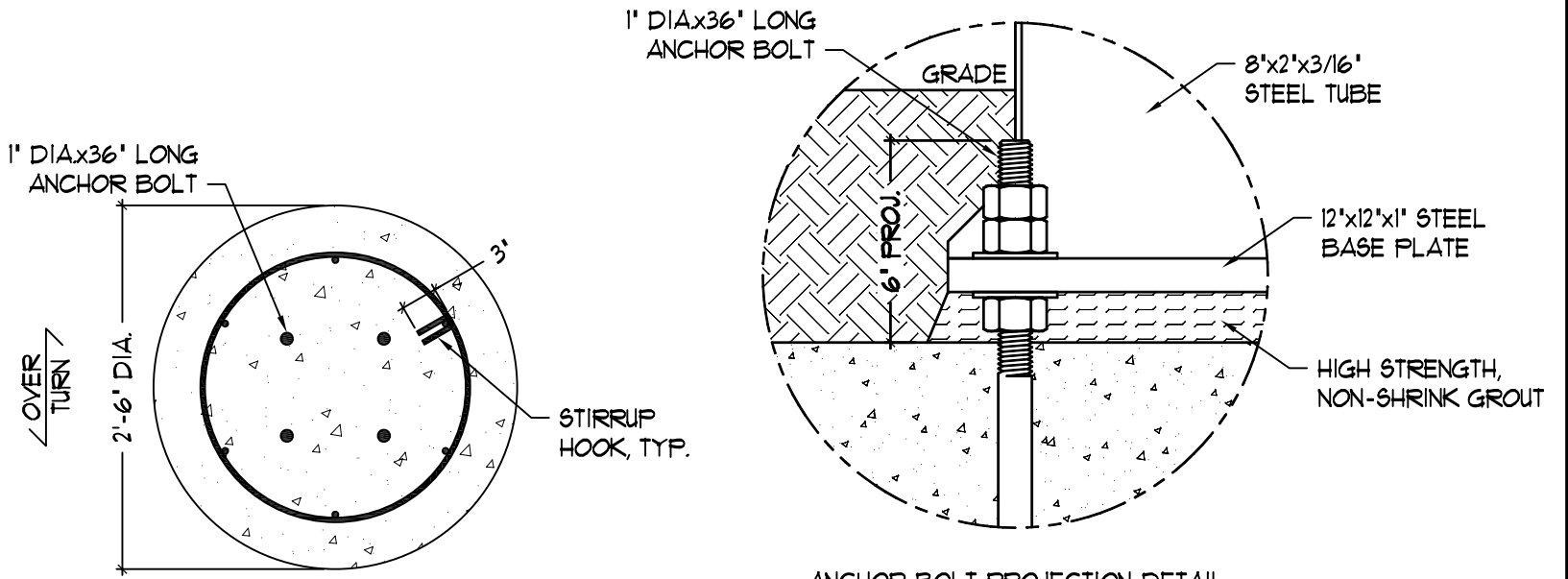
REBAR SCHEDULE
SPREAD FOUNDATION

PLACEMENT	SIZE	SPACING	QUANTITY
OVER TURN BOTTOM STEEL	#4	16'	1
OVER TURN TOP STEEL	#4	16'	1
BOTTOM CROSS STEEL	#4	18'	3
TOP CROSS STEEL	#4	18'	3

DO NOT WELD REBAR
3' MIN. CONC. COVER

WHERE THE EXTREME FROST PENETRATION DEPTH REQUIREMENT IS GREATER THAN THE SPECIFIED DEPTH OF THE FOUNDATION, THE FOUNDATION DESIGN SHOULD BE ALTERED TO MEET THE LOCAL FROST DEPTH REQUIREMENTS.

ALL STEEL BELOW GRADE (INCLUDING EXPOSED ANCHOR BOLTS) SHALL BE COATED WITH CARBOLINE BITUMASTIC 50 COAL TAR OR EQUAL AFTER INSTALLATION AND PRIOR TO LANDSCAPING.



SECTION @ CAISSON

ANCHOR BOLT PROJECTION DETAIL

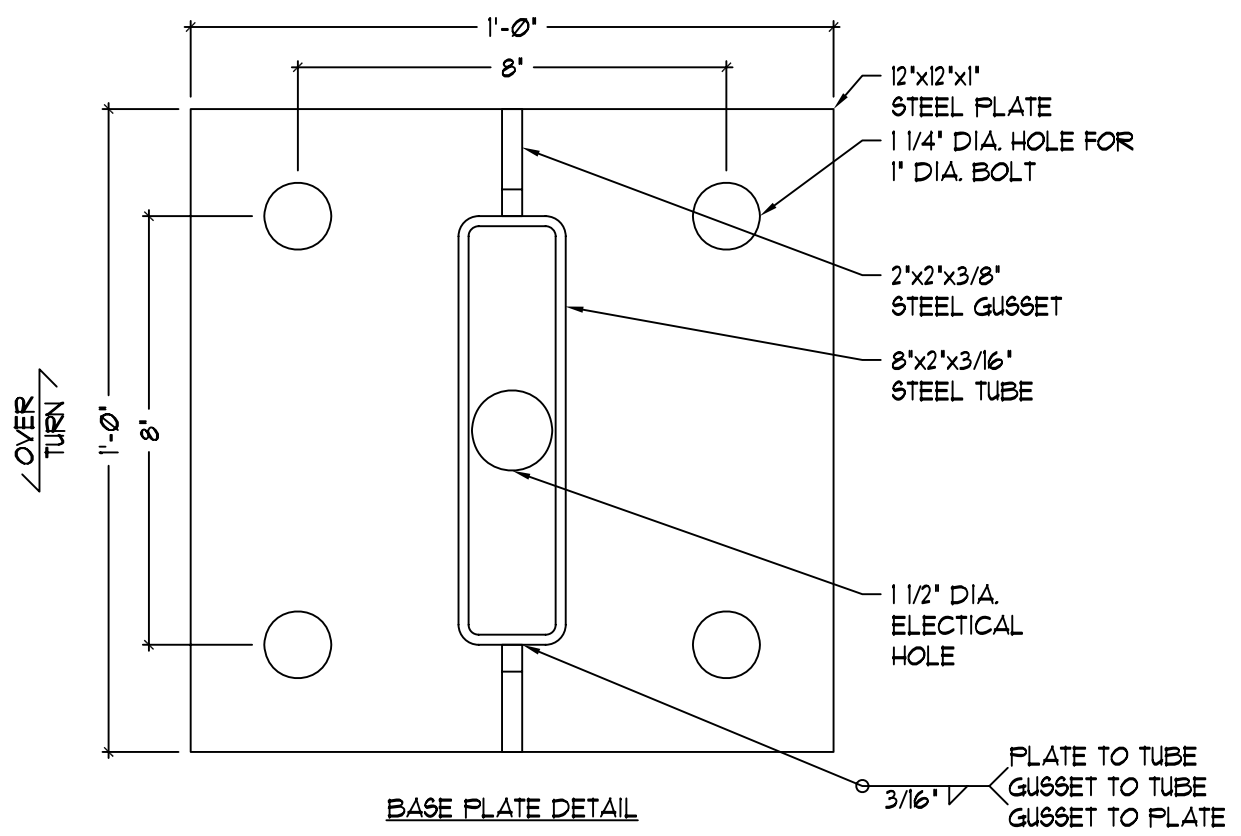
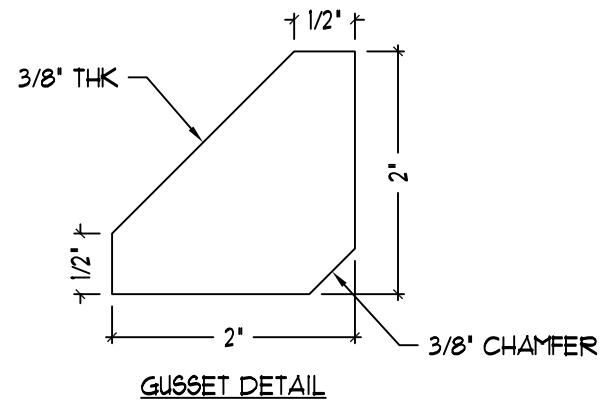
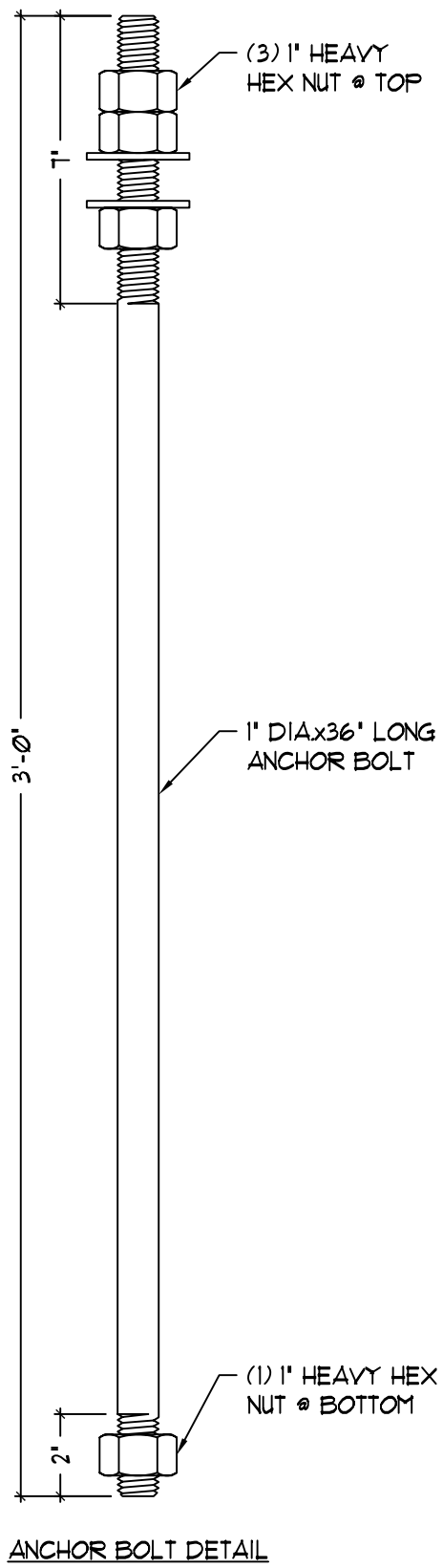


These documents and plans are the sole property of John Deere representing prototypical design drawings created specifically for dealer identification. Use of this unpublished work for any purpose other than the intended application is strongly discouraged. Disclosure or reproduction of any of the information contained herein without the written consent of the owner is strictly prohibited.

SHT.	2	BY:	JBL	Project No.	09-0323	REV.	DATE	DESCRIPTION	BY:	APR
OF	3	DATE:	5/29/09	Drawing No.	B248009	REV.	DATE	DESCRIPTION	BY:	APR

GRAPHICS DEPICTED ARE FOR ILLUSTRATIVE PURPOSES ONLY! USE ONLY APPROVED ARTWORK FOR PRODUCTION.

DESIGNATION:
LARGE MONOLITH 11' OAH (SWL)



These documents and plans are the sole property of John Deere representing prototypical design drawings created specifically for dealer identification. Use of this unpublished work for any purpose other than the intended application is strongly discouraged. Disclosure or reproduction of any of the information contained herein without the written consent of the owner is strictly prohibited.

SHT.	3	BY:	JBL
OF	3	DATE:	5/29/09

Project No.	09-0323
Drawing No.	B248009

REV.	DATE	DESCRIPTION	BY:	APR
△	-/-	-----	--	--
△	-/-	-----	--	--
△	-/-	-----	--	--
△	1/2/09	Corrected Column Center to Center 4 Changed Electrical Hole Size	JBL	--

GRAPHICS DEPICTED ARE FOR ILLUSTRATIVE PURPOSES ONLY! USE ONLY APPROVED ARTWORK FOR PRODUCTION.

DESIGNATION:
LARGE MONOLITH 11' OAH (SWL)