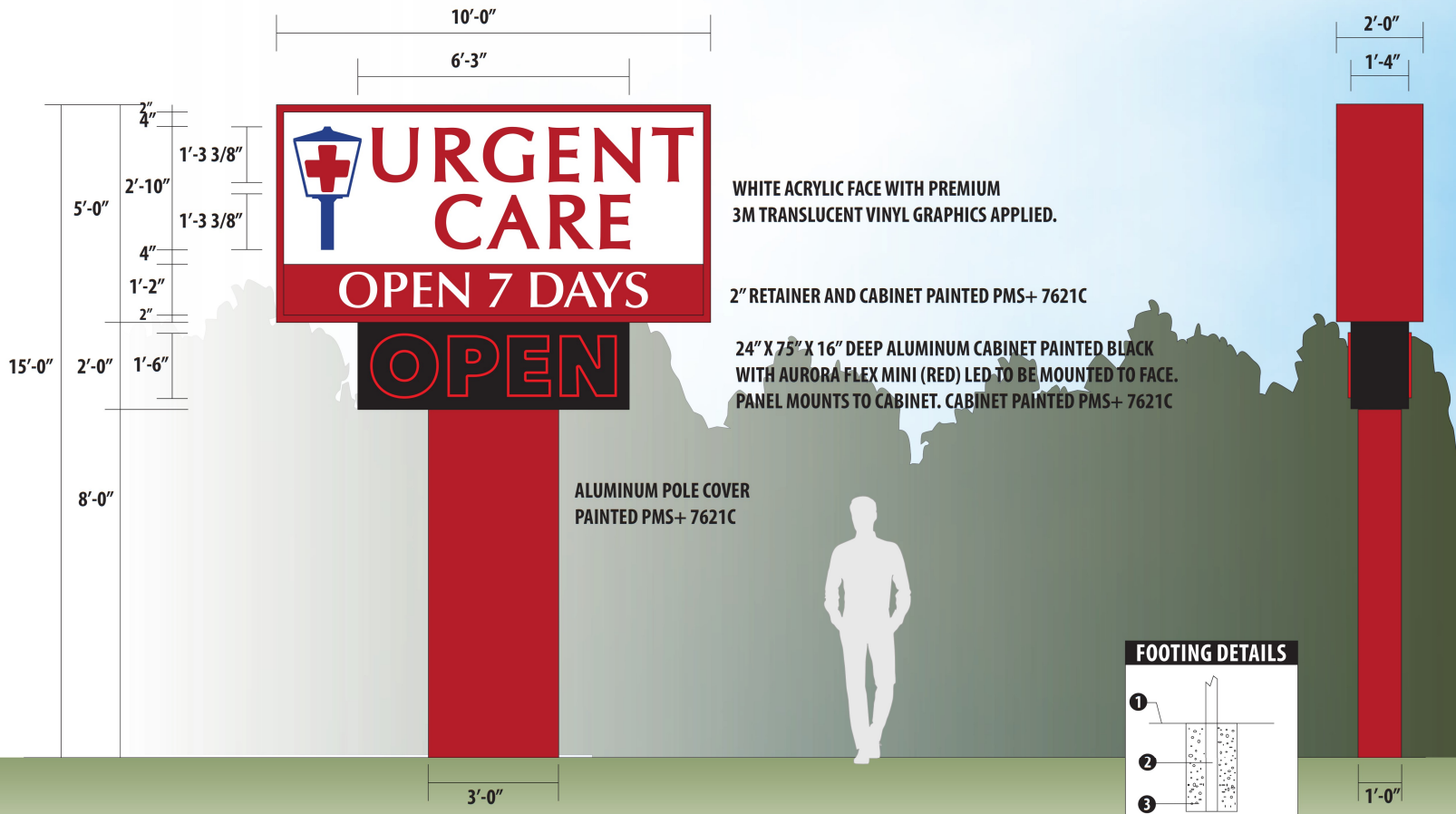


CUSTOMER: Main Street Urgent Care

LOCATION: Cameron, NC

- PMS 288 C
3M 3630-157 SULTAN BLUE
- PMS+ 7621 C
3M 3630-73 DARK RED



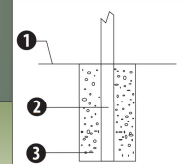
WHITE ACRYLIC FACE WITH PREMIUM 3M TRANSLUCENT VINYL GRAPHICS APPLIED.

2" RETAINER AND CABINET PAINTED PMS+ 7621C

24" X 75" X 16" DEEP ALUMINUM CABINET PAINTED BLACK WITH AURORA FLEX MINI (RED) LED TO BE MOUNTED TO FACE. PANEL MOUNTS TO CABINET. CABINET PAINTED PMS+ 7621C

ALUMINUM POLE COVER PAINTED PMS+ 7621C

FOOTING DETAILS



- 1 GRADE
- 2 (1) 6" SCHEDULE 40 STEEL PIPE
- 3 48" X 24" CONCRETE

SPECIFICATIONS

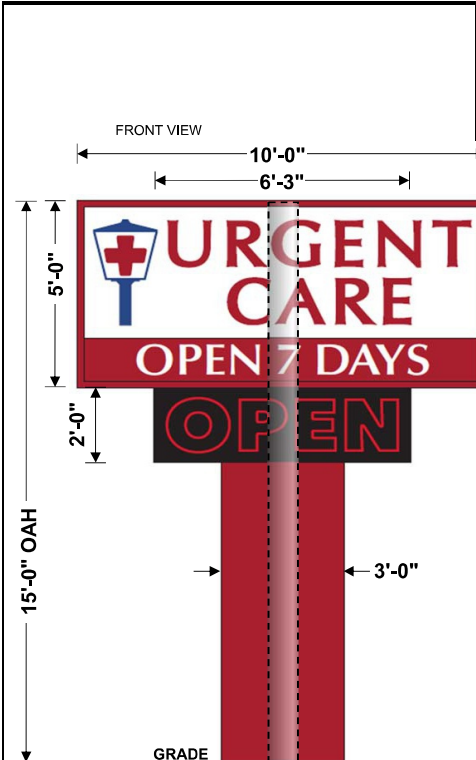
- Quantity: 1
- Size: 84" x 120"
- Square Feet: 70
- # of Faces: DOUBLE-FACED
- Panel Material: ACRYLIC
- Graphic Application: VINYL
- Bullnose: NO
- Panel Depth: 3/16"
- Panel Color: WHITE
- Skirt Color: N/A
- Post Color: PMS+ 7621C
- Reveal Color: PMS+ 7621C
- Letter Color: 3M3630-73
- Logo Color: 3M3630-157
- Digital Print: NO
- Letter Style: CORP
- Illumination: YES
- Voltage: 120
- Amps: 10
- UL Approved: YES
- Installation Method: DIRECT BURIAL

NOTES

GROUND SIGN - MAX HEIGHT 15FT.
100 SQ FT MAX.
SIGN SET BACK IS 10FT FROM ANY PUBLIC ROW OR PROPERTY LINE.

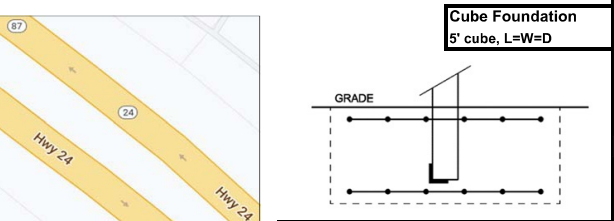
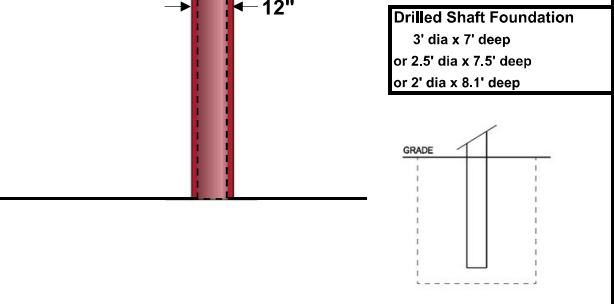
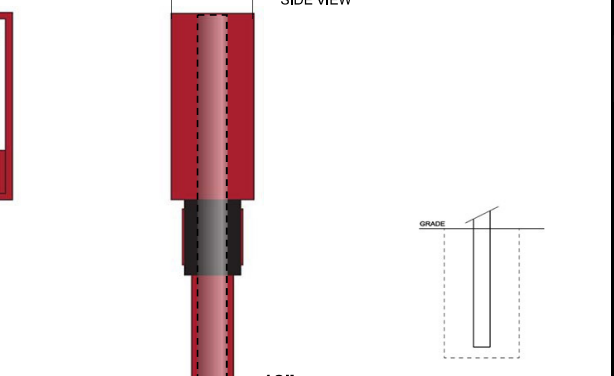
FLASHING NOT ALLOWED

APPROVED AS DRAWN APPROVED AS NOTED
 REJECTED-REVISE AND RESUBMIT
BY: _____
DATE: _____

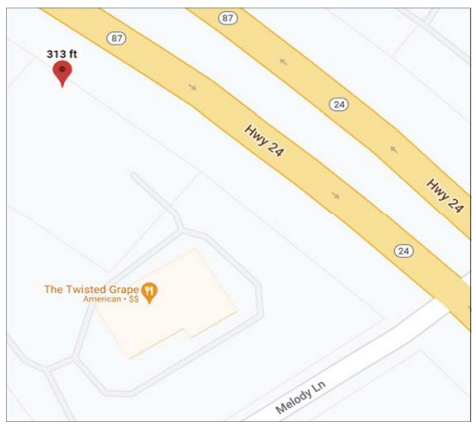


8" Sch 60, 8.625" Dia, 0.406" wall, A53 35 ksi Steel Column, S=18.94 M=33.1
 8", 8.625" Dia, 0.375" wall, A53 35 ksi Steel Column, S=17.67 M=30.9
 8.625" Dia, 0.322" wall, A500 42 ksi HSS Steel Column, S=15.8 M=33.2
 6" L x 6" W x 0.375" wall, A500 46 ksi HSS Steel Column, S=13.1 M=30.1

Acceptable Sign Support Columns
 direct_embed type foundation
 Grade offset (ft)



Spread Foundation (Long is perpendicular to face)
 7' long x 7' wide x 2' deep
 #5, 12" OC each way, 2 mats, 3" from top and bottom, gentle bend around column
 Weld 3" long 2" x 2" x 3/8" angle to bottom and side of column with 3/8" fillet weld all around
 UNO, in 2500 psi or higher concrete, embed support columns, anchor bolts, and/or vertical rebar to 6" from bottom in drilled shaft and cube foundations, and to 3" from bottom in spread foundations.



North Carolina, 2018 NORTH CAROLINA BUILDING CODE
 2015 IBC with NC Amendments, Appendix H, ASCE 7-10
130 Wind Speed, Vult, mph, from ASCE 7-10, Figure 26.5
IV Risk Category; I, Low; II, Normal; III, Substantial Hazard; IV, Essential/Critical
C Wind Exposure; C, House size obstructions for > 600 ft; D, no obstructions > 5000 ft

Presumptive soil type
 Sand, silty sand, clayey sand, silty gravel, clayey gravel
 WIND LOAD CALC: ASCE 7-10 Section 29.4.1, Solid Freestanding Signs
 Terrain $K_{zt}=1$, no hill, ridge, or escarpment >15' high; Directionality $K_d=0.85$; Gust $G=0.85$ rigid structure;
 $K_{z1}=2.01*(H/900)^{(2/9.5)}ExpC$, (700&11.5)ExpD; $q_{h,ult}=0.00256*K_z*K_{zt}*K_d*V^2$; load = 0.6W+D, D ≤ 15 psf

A	B	C	D	E	F	Sign Segment ID	OAH&D
15.0	10.0	8.0				Segment Top Above Grade, Top, ft	15.0
10.0	6.3	3.0				Segment Width, W, ft	5.8
5.0	2.0	8.0				Segment Height, H, ft	15.0
50.00	12.50	24.00				Segment Area, ft ² , adjusted for grade offset	
0.849	0.849	0.849				Velocity Pressure Exposure Coeff; K_z	
31.2	31.2	31.2				Velocity Pressure, $q_{h,ult}$, psf (per segment)	
1.80	1.80	1.58				Force Coefficient, C_f (per segment)	1.67
47.8	47.8	42.0				Wind Pressure, P_{ult} , psf = $q_{h,ult} * G * C_f$	
28.7	28.7	25.2				Wind Pressure, P_{avg} , psf = $q_{h,ult} * G * C_f$	
1.4	0.4	0.6				Wind Force, F_{seg} , kips = $P_{avg} * Area_{seg}$	
17.9	3.2	2.4				Wind Moment M_{seg} , kip*ft = $F_{seg} * (ToD_{seg} + H_{seg}/2)$	

grade = 0 ft
 9,830565
 2.40 kip Total Shear at Grade, V = Sum(F_{seg})
 23.6 kip.ft Total Moment at Grade, M = Sum(M_{seg})

- Sign manufacturer/installer's design, detailing, fabrication, and erection shall conform to the following specifications: Building Code, ASTM specifications, ACI-318 for reinforced concrete, American Welding Society Code for Welding in Building Construction, AISC Specification for Design, Fabrication, and Erection of Structural Steel for Buildings.
- Materials of construction: (Unless noted otherwise)
 - Structural steel (angles, shapes, plates, gussets): ASTM A-36, $F_y=36$ ksi.
 - HSS steel tubing: A-500, Grade B, Round $F_y=42$ ksi; Rectangular $F_y=46$ ksi.
 - Structural aluminum tubing: 6061-T6, or equivalent, $F_y=18$ ksi at weld.
 - Structural pipe: A-53, Grade B, Type E or S, $F_y=35$ ksi.
 - Anchor bolts: ASTM F1554 Grade 36 with heavy hex at bottom, not "L" or "J" bolts.
 - Connection bolts: A-325, snug tight.
 - Rebar: ASTM 615, #6 or larger - Grade 60, #5 or smaller - Grade 40, 3" cover.
 - Concrete: 2500 psi, 28 days.
 - Provide coatings to prevent any possibility of corrosion.
- Welding design and fabrication according to AWS D1.1 (steel) or AWS D1.2 (aluminum).
- AWS certification required for all structural welders.
- Use D1.1 (steel) or D1.2 (aluminum) certified weld with same bending strength as column UNO.
- Embedded column acts as vertical reinforcement for drilled and cube foundations.
- Soil bearing capacity is Section 1806.2 Presumptive Load Bearing Value. Lateral bearing is doubled for sign poles per 1806.3.4. Soil choice types per Table 1806.2. **Soil type must be applicable for entire foundation. Flat level grade and unsaturated soil matching presumptive soil type must be verified by sign installer.**

Code Section 1807.3.2
Drilled Shaft Foundation, laterally unconstrained at grade
 L=W=D

5.0	3.0	2.5	2.0	Diameter, b, ft (or length and width of cube)	1.5
5.0	6.9	7.4	8.1	Depth, D, ft	$D = 0.5 * A * \{1 + [1 + (4.36 * H_{cent}/A)]^{.5}\}$
1.6	2.7	3.0	3.5	A term	$A = 2.34 * F / (S1 * b)$
499	690	740	807	S1 or S3	$S1 = 2 * S_{soil} * D/3$

150 psf/ft Soil for Sand, silty sand, clayey sand, silty gravel, clayey gravel

Spread Foundation Q psf for Sand, silty sand, clayey sand, silty gravel, clayey gravel = 2000

7.0 Length, L, ft
 7.0 Width, W, ft
 2.0 Depth, D, ft

2665 Soil Bearing at Bottom of Fdn, Q_{bot} , psf, $Q_{bot} = 1.3 * (Q + 100) * (D - 1)$
 14.7 Total Weight, Wt, kips, $Wt = L * W * D * .15$ kips/ft³
 1.6 Toe Length, Toe, ft, $Toe = Wt / (W * Q_{bot})$
 3.0 Bearing Eccentricity, e, ft, $e = L / 2 - Toe / 3$
 29.2 Overturning Capacity Calc, OT, kip.ft, $OT = Wt * e / 1.5$ safety

Mark Disosway, Professional Engineer,
North Carolina License 26032
 This pdf file has been digitally signed. Printed copies are not considered signed and sealed. IdenTrust verifies my signature certificate when you click the date. Valid for one sign at this location, UNO.



2024.02.15
 17:07:19
 -05'00'

This seal for structural engineering (Support Column & Foundation ONLY)
SCOPE OF WORK: Design sign support column and foundation to meet structural requirements of building code based on stated (not verified) site factors and size & shape based on sign installer's drawing, attached. **By using this engineering** the sign owner, manufacturer, and installer accept responsibility to: Design, build, and install sign cabinet, face, attachment, electrical, etc according to building, appendix h, sign, fire, UL, zoning codes. Verify site conditions match stated wind speed, risk, exposure, topo, and soil factors or request engineering revision.

signengineering@gmail.com
 Mark Disosway, PE, 163 SW Midtown Place, Ste 103,
 Lake City, Florida 32025 386-754-5419

JOB # 240171
PYLON SIGN: 1 Column, Centered & Embedded in Foundation

Signage Industries

Main Street Urgent Care
 190 Melody Lane,
 Cameron, NC 28326

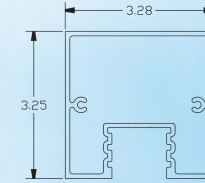
Job240171,Sign1,Sht1of1,Rev0,Day240214

NOT TO SCALE

CUSTOMER: Main Street Urgent Care

LOCATION: Cameron, NC

- PMS 288 C
3M 3630-157 SULTAN BLUE
- PMS+ 7621 C
3M 3630-73 DARK RED



SERIES 3 - 3 1/4" SQUARE POST #1233
SCALE - FULL SIZE



SPECIFICATIONS

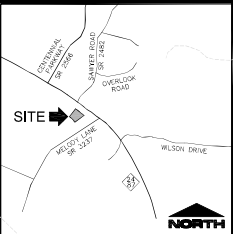
- Quantity: 1
- Size: 36" x 96"
- Square Feet: 24
- # of Faces: **DOUBLE-FACED**
- Panel Material: **ALUMINUM**
- Panel Thickness: **.090**
- Frame Series: **3-SERIES**
- Letter Style: **CUSTOM**
- Panel Color: **WHITE**
- Frame Color: **PMS+ 7621C**
- Post Color: **PMS+ 7621C**
- Letter Color: **AS NOTED**
- Logo Color: **AS NOTED**
- Reveal Color: **N/A**
- Vinyl: **YES**
- Digital Print: **NO**
- Grain Direction: **N/A**
- Installation Method: **DIRECT BURIAL**

NON-ILLUMINATED

NOTES

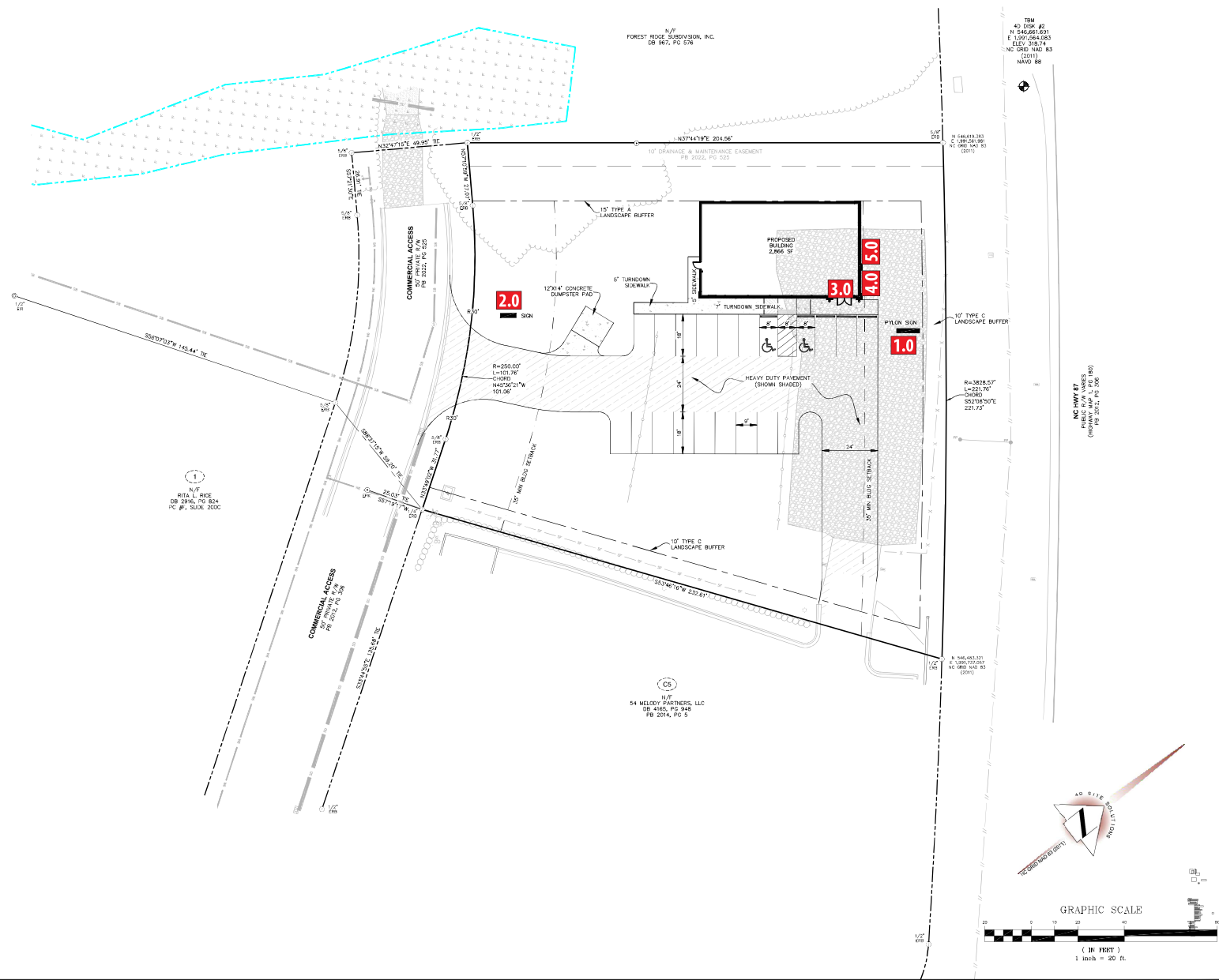
**GROUND SIGN - MAX HEIGHT 15FT.
100 SQ FT MAX.
SIGN SET BACK IS 10FT FROM ANY PUBLIC
ROW OR PROPERTY LINE.**

APPROVED AS DRAWN APPROVED AS NOTED
 REJECTED-REVISE AND RESUBMIT
BY: _____
DATE: _____



VICINITY MAP
NOT TO SCALE

- LEGEND:**
- EX-EXISTING IRON ROD
 - EX-EXISTING PE NAIL
 - EX-EXISTING REBAR
 - COMPUTED POINT
 - N/F = NOW OR FORMERLY
 - R/W = RIGHT OF WAY
 - PROPERTY LINE
 - ADJACENT PROPERTY LINE
 - THE LINE
 - RIGHT-OF-WAY
 - SETBACK LINE
 - SANITARY SEWER LINE
 - STORM DRAINAGE
 - WATER LINE
 - OVERHEAD UTILITY
 - WETLANDS
 - PERMANENT EASEMENT
 - CHAIN LINK FENCE
 - ROPE FENCE
 - S/LT FENCE LINE
 - TREE LINE
 - MAJOR CONTOUR
 - MINOR CONTOUR
 - SPOT ELEVATION
 - BENCHMARK
 - SIGN
 - TRANSFORMER
 - LIGHT POLE
 - UTILITY POLE
 - TELEPHONE PEDESTAL
 - WATER VALVE
 - FIRE HYDRANT
 - CATCH BASIN
 - SANITARY SEWER MANHOLE
 - EASEMENT
 - GRAVEL
 - ASPHALT
 - SOIL
 - WETLANDS



REVISIONS

35% SUBMITTAL
NOT RELEASED FOR CONSTRUCTION

PROJECT NAME

SPOUT SPRINGS MEDICAL FACILITY

SITE PLAN

CLIENT

HUDSON BROTHERS CONSTRUCTION, CO.

1450 E. Arlington Boulevard
 Greenville, North Carolina 27658
 Phone: (252) 353-2000
 Fax: (252) 353-2375

PROJECT INFORMATION

DESIGNED BY:	SCOTT
DRAWN BY:	SCOTT
CHECKED BY:	CHRE
PROJECT NUMBER:	2007

DRAWING SCALE

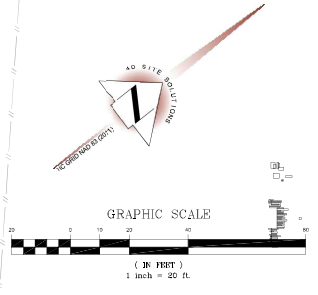
HORIZONTAL: 1"=20'

DATE RELEASED

SEPTEMBER 1, 2023

SHEET NUMBER

C-2.0



CUSTOMER: Main Street Urgent Care

LOCATION: Cameron, NC

SPECIFICATIONS

Quantity: 1

Size: 66 5/8" x 96 1/8"

Square Feet: 44.22

Letter Construction: FABRICATED

Face Material: ACRYLIC

Face Thickness: 3/16"

Back Material: ALUMINUM

Back Thickness: .063

Letter Height: 13 3/4"

Logo Height: 48"

Letter Depth: 5"

Letter Style: CORP

Letter Color: 3M 3630-157

Logo Color: AS NOTED

Return Color: WHITE

Retainer Color: 2050 DARK BLUE

LED Color: WHITE

Illumination Type: FACE

Digital Print: NO

Voltage: 120

Amps: 4

UL Approved: YES

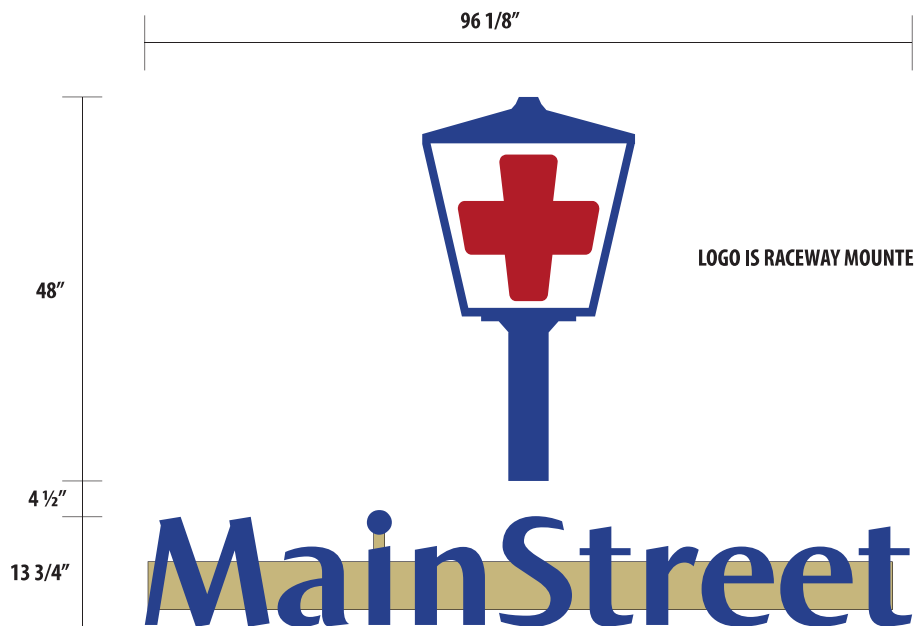
Mount Surface: BRICK VENEER

Installation Method: RACEWAY

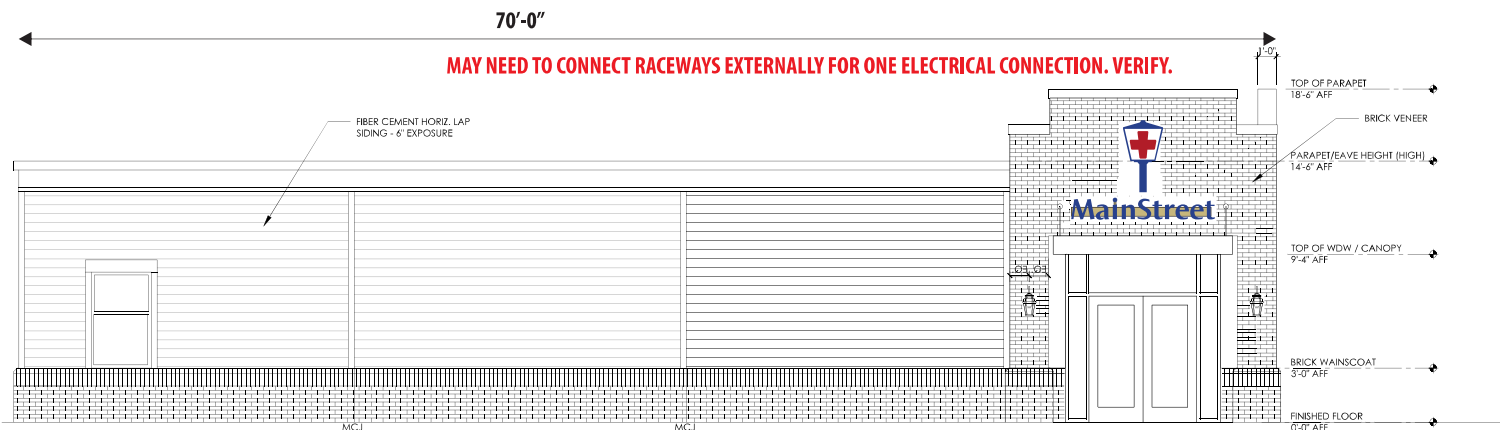
NOTES

1 SQ FT PER LINEAR FT OF MOUNTING WALL.
ALLOWED UP TO 3 WALL SIGNS.

APPROVED AS DRAWN APPROVED AS NOTED
 REJECTED-REVISE AND RESUBMIT
BY: _____
DATE: _____



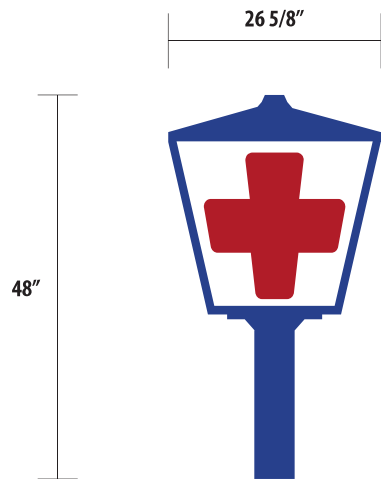
6" X 3 1/2" DEEP EM RACEWAY. PAINTED TO MATCH BRICK. TBD.



PROPOSED SIGNAGE (FRONT ELEVATION) SCALE: 3/32" = 1'-0"

CUSTOMER: Main Street Urgent Care

LOCATION: Cameron, NC



- 3M 3630-73 DARK RED
- 3M 3630-157 SULTAN BLUE

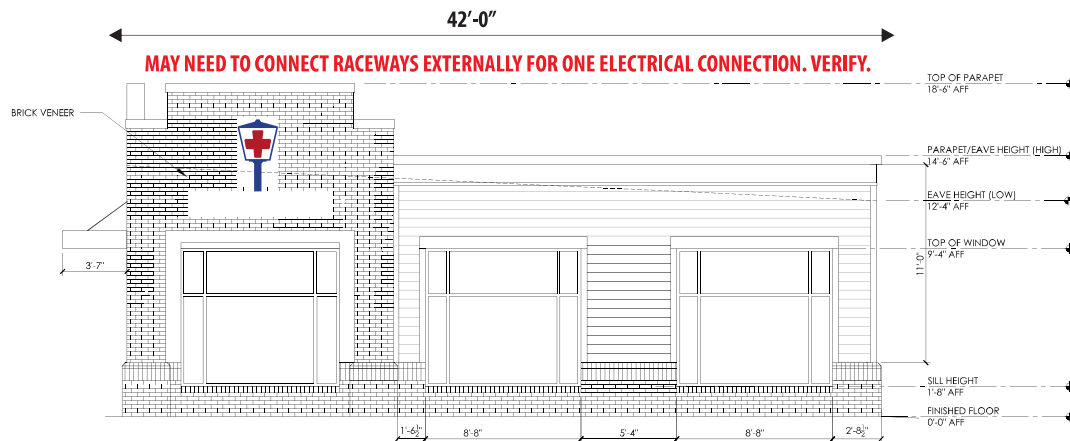
6" X 3 1/2" DEEP EM RACEWAY. PAINTED TO MATCH BRICK. TBD.

SPECIFICATIONS	
Quantity:	1
Size:	48" x 26 5/8"
Square Feet:	8.87
Letter Construction:	FABRICATED
Face Material:	ACRYLIC
Face Thickness:	3/16"
Back Material:	ALUMINUM
Back Thickness:	.063
Letter Height:	N/A
Logo Height:	48"
Letter Depth:	5"
Letter Style:	CORP
Letter Color:	N/A
Logo Color:	AS NOTED
Return Color:	WHITE
Retainer Color:	2050 DARK BLUE
LED Color:	WHITE
Illumination Type:	FACE
Digital Print:	NO
Voltage:	120
Amps:	2
UL Approved:	YES
Mount Surface:	BRICK VENEER
Installation Method:	RACEWAY

NOTES

1 SQ FT PER LINEAR FT OF MOUNTING WALL. ALLOWED UP TO 3 WALL SIGNS.

APPROVED AS DRAWN APPROVED AS NOTED
 REJECTED-REVISE AND RESUBMIT
 BY: _____
 DATE: _____



PROPOSED SIGNAGE (HIGHWAY SIDE ELEVATION) SCALE: 3/32" = 1'-0"

CUSTOMER: Main Street Urgent Care

LOCATION: Cameron, NC



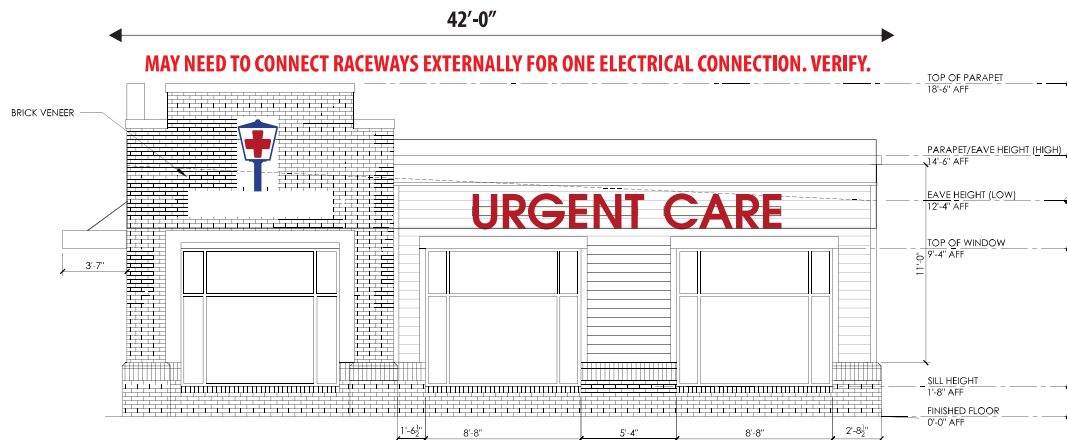
6" X 3 1/2" EM RACEWAY. PAINTED TO MATCH WALL. COLOR IS TBD.

SPECIFICATIONS

Quantity: 1
Size: 23" x 206 1/4"
Square Feet: 32.94
Letter Construction: FABRICATED
Face Material: ACRYLIC
Face Thickness: 3/16"
Back Material: ALUMINUM
Back Thickness: .063
Letter Height: 23"
Logo Height: N/A
Letter Depth: 5"
Letter Style: CORP
Letter Color: PG 2283 RED
Logo Color: N/A
Return Color: WHITE
Retainer Color: 2793 RED
LED Color: RED
Illumination Type: FACE
Digital Print: NO
Voltage: 120
Amps: 4
UL Approved: YES
Mount Surface: FIBER CEMENT
Installation Method: RACEWAY

NOTES

1 SQ FT PER LINEAR FT OF MOUNTING WALL.
ALLOWED UP TO 3 WALL SIGNS.



PROPOSED SIGNAGE (HIGHWAY SIDE ELEVATION) SCALE: 3/32" = 1'-0"

APPROVED AS DRAWN APPROVED AS NOTED
 REJECTED-REVISE AND RESUBMIT
BY: _____
DATE: _____

LED CHANNEL LETTERS - RACEWAY MOUNTED

