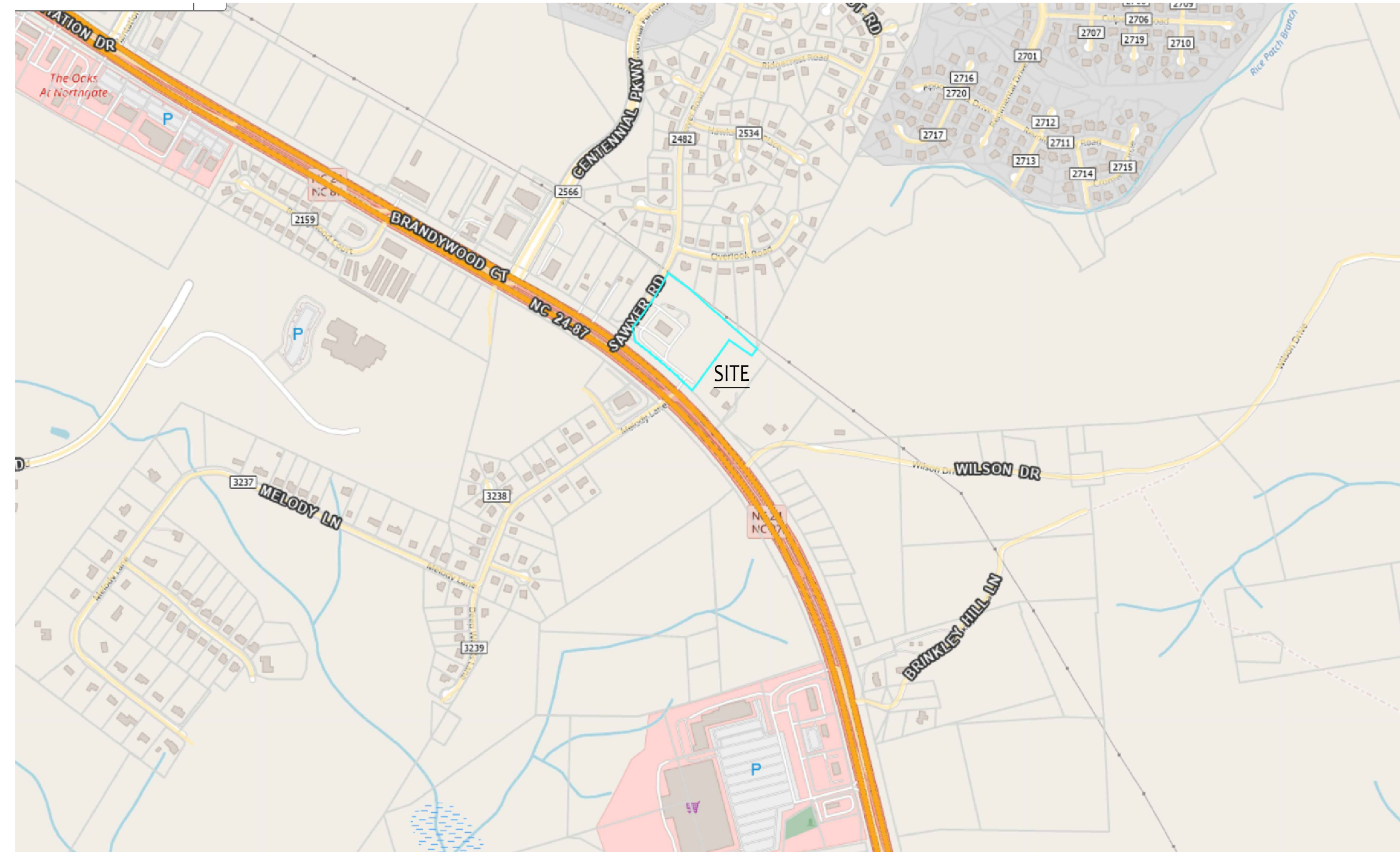


CAMERON OFFICE SIGNAGE

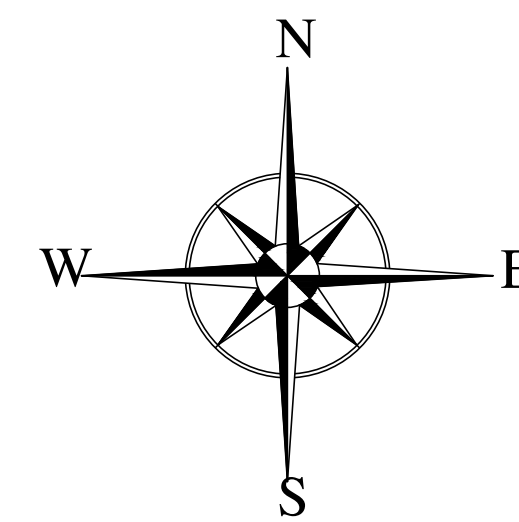
2277 NC 24-87
CAMERON, NC

owner/developer:
Cameron Commercial Holdings, LLC
6908 North Ridge Dr,
Raleigh, North Carolina 27615

landscape architect:
TMTLA Associates
5011 Southpark Drive, Ste. 200
Durham, North Carolina 27713
(919) 484-8880



VICINITY MAP

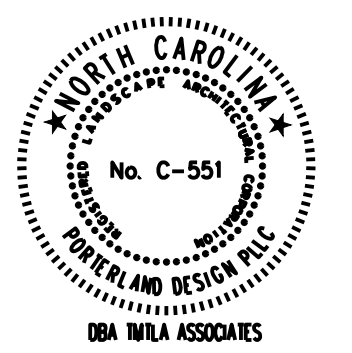


SUBMITTALS

FIRST SUBMITTAL _____ 1/8/2024

INDEX

COVER SHEET	
SIGN LOCATION PLAN	_____ L-1
SIGN CONSTRUCTION DETAILS	_____ L-2
SIGN LANDSCAPE PLAN	_____ L-3

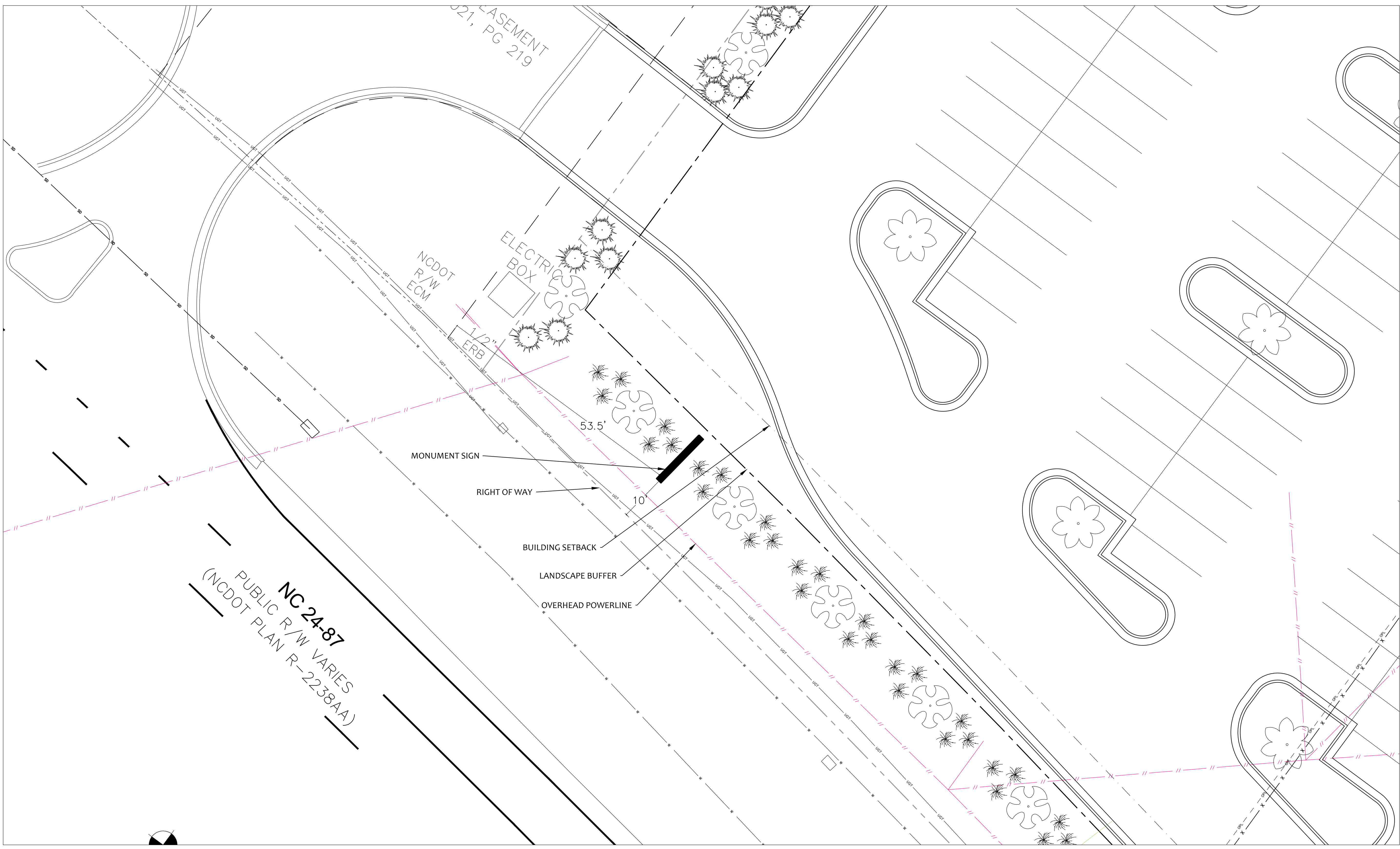


REVISIONS:

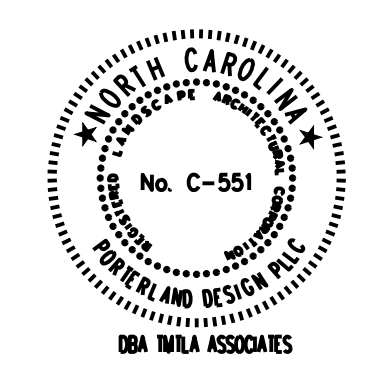
COVER SHEET
CAMERON OFFICE PARK
2277 NC 24-87
CAMERON, NORTH CAROLINA

SCALE: _____
DRAWN BY:
CDR
PROJECT #
23153
DATE:
1/8/2024
SHEET

COVER
OF



SIGN LOCATION PLAN

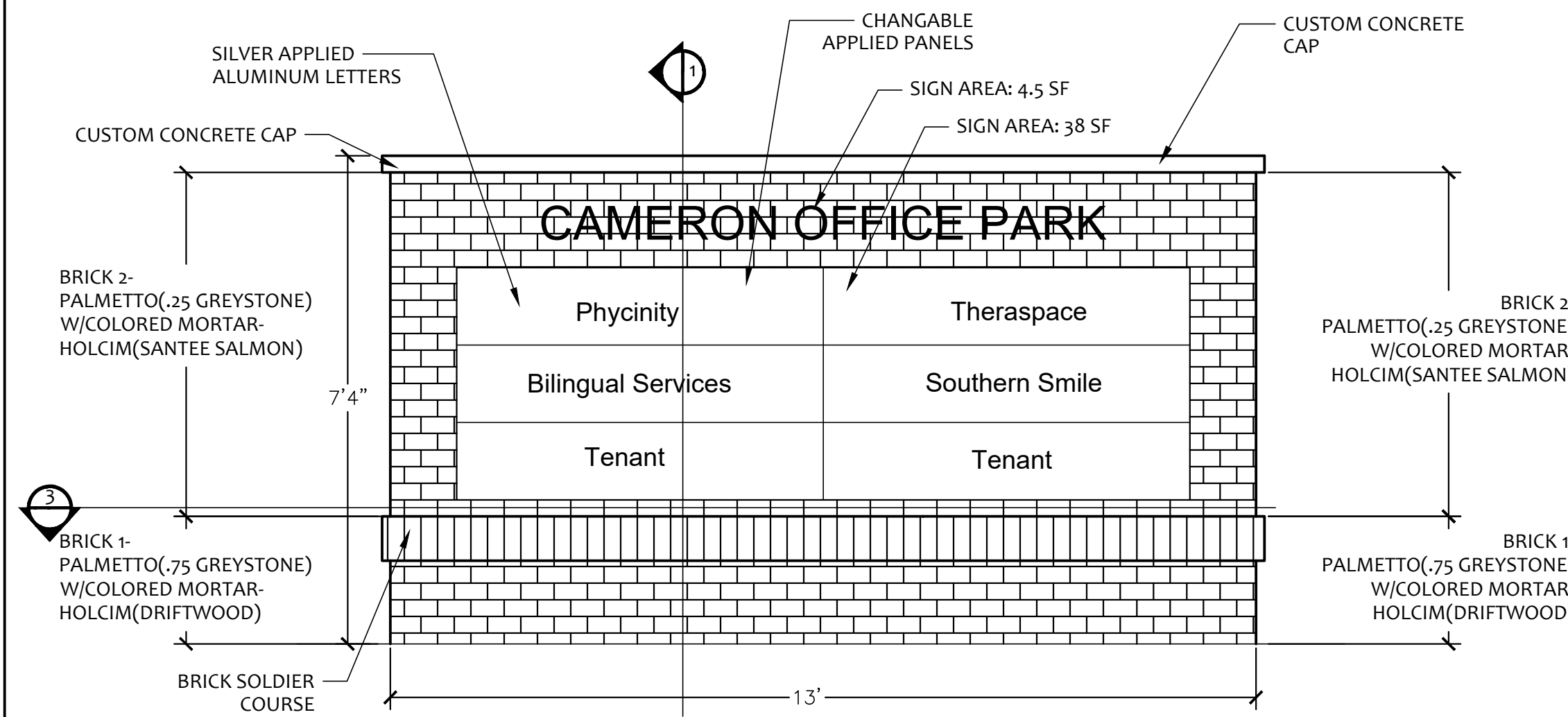


REVISIONS:

SIGN LOCATION PLAN
 CAMERON OFFICE PARK
 2277 NC 24-87
 CAMERON, NORTH CAROLINA

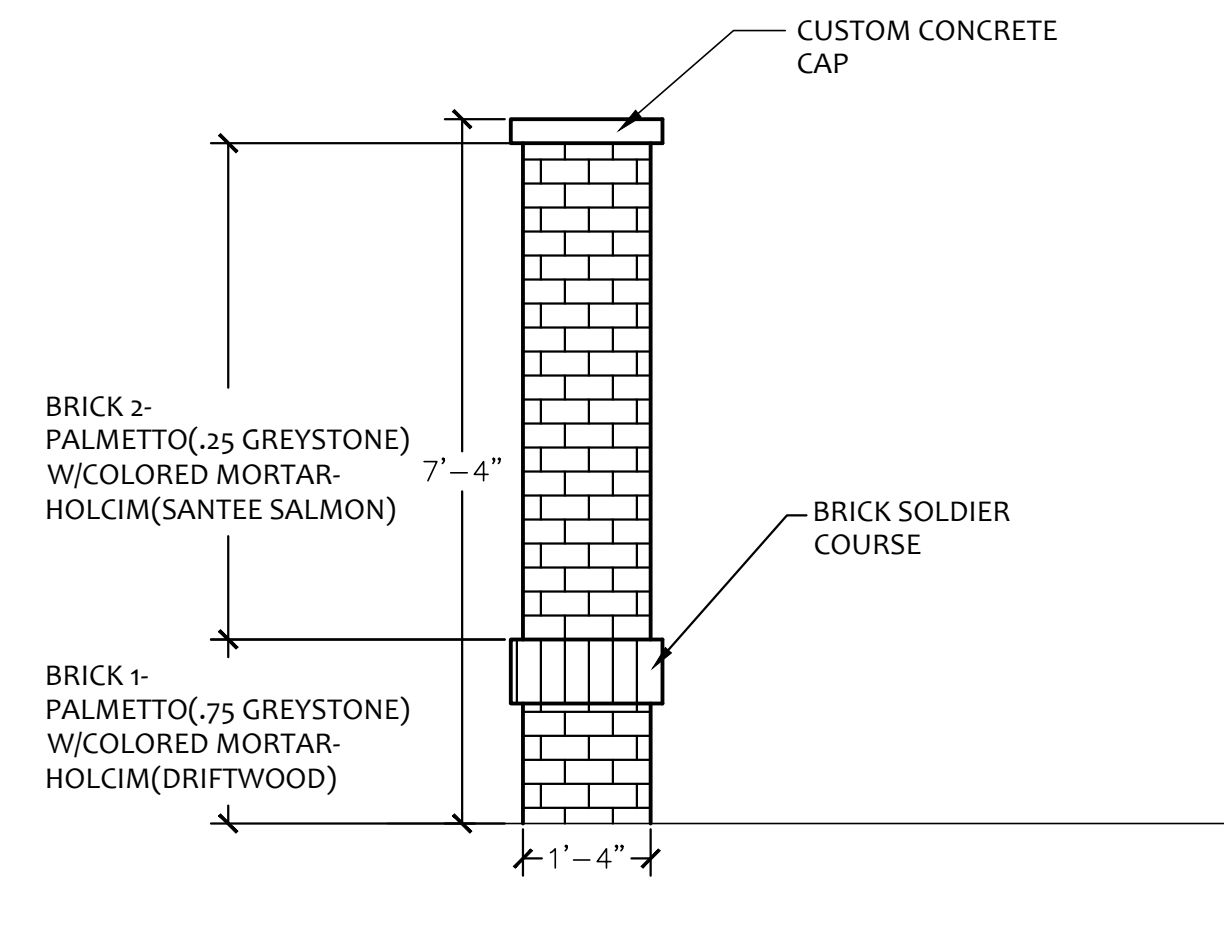
SCALE: 1"=10'
 DRAWN BY: CDR
 PROJECT # 23153
 DATE: 1/8/2024

Projects\2023 Projects\23153 - Cameron Office Park Signage, Hamnett County, NC\Submittals (CAD)\Cameron Commercial SP3.dwg
 L:\LOCATION\1/8/2024 10:06:02 AM, DWG To PDF.plt3



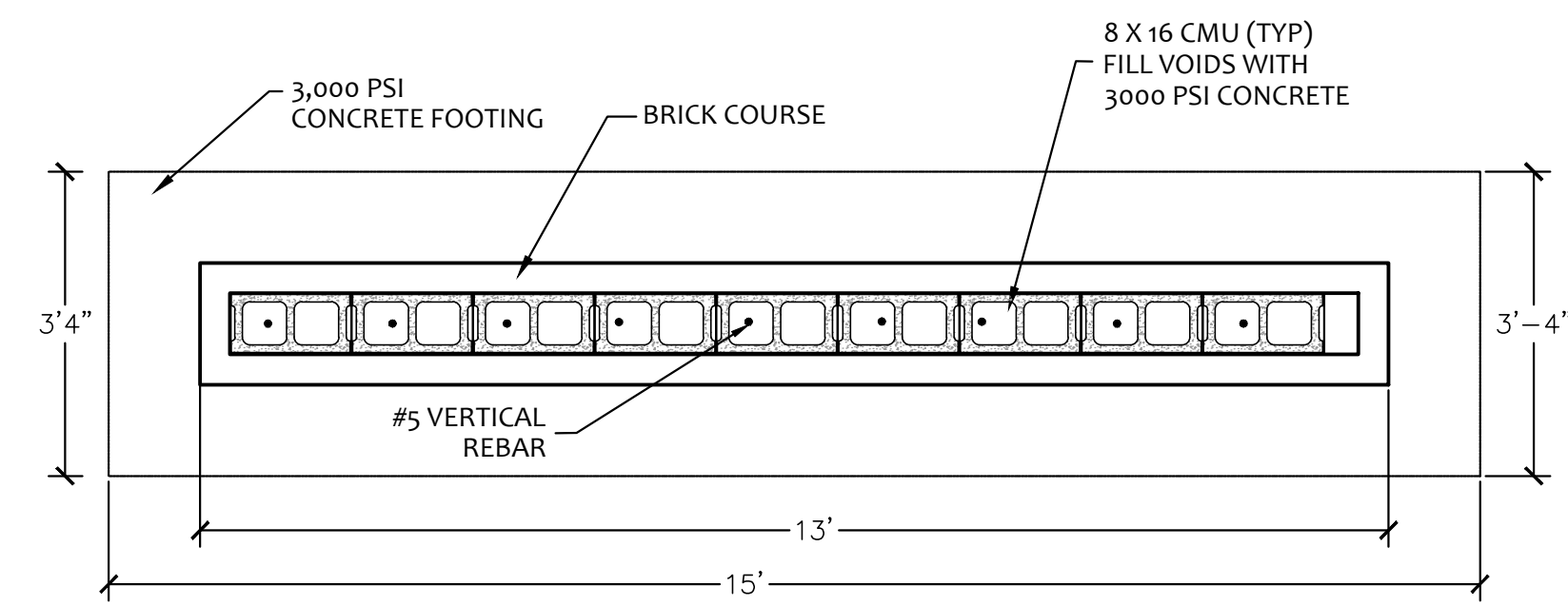
1 SIGN ELEVATION

SCALE: 1/2"=1'-0"



2 COLUMN ELEVATION

SCALE: 1/2"=1'-0"

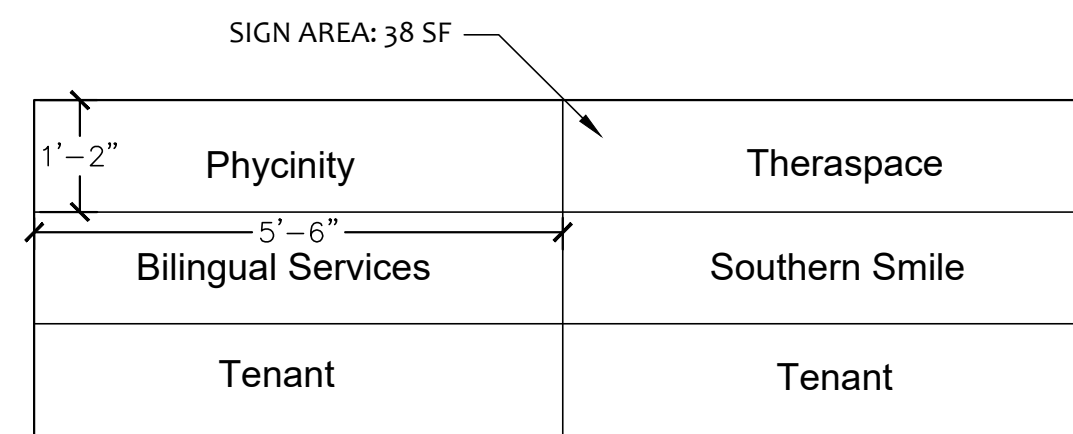


3 SIGN PLAN VIEW

SCALE: 1/2"=1'-0"

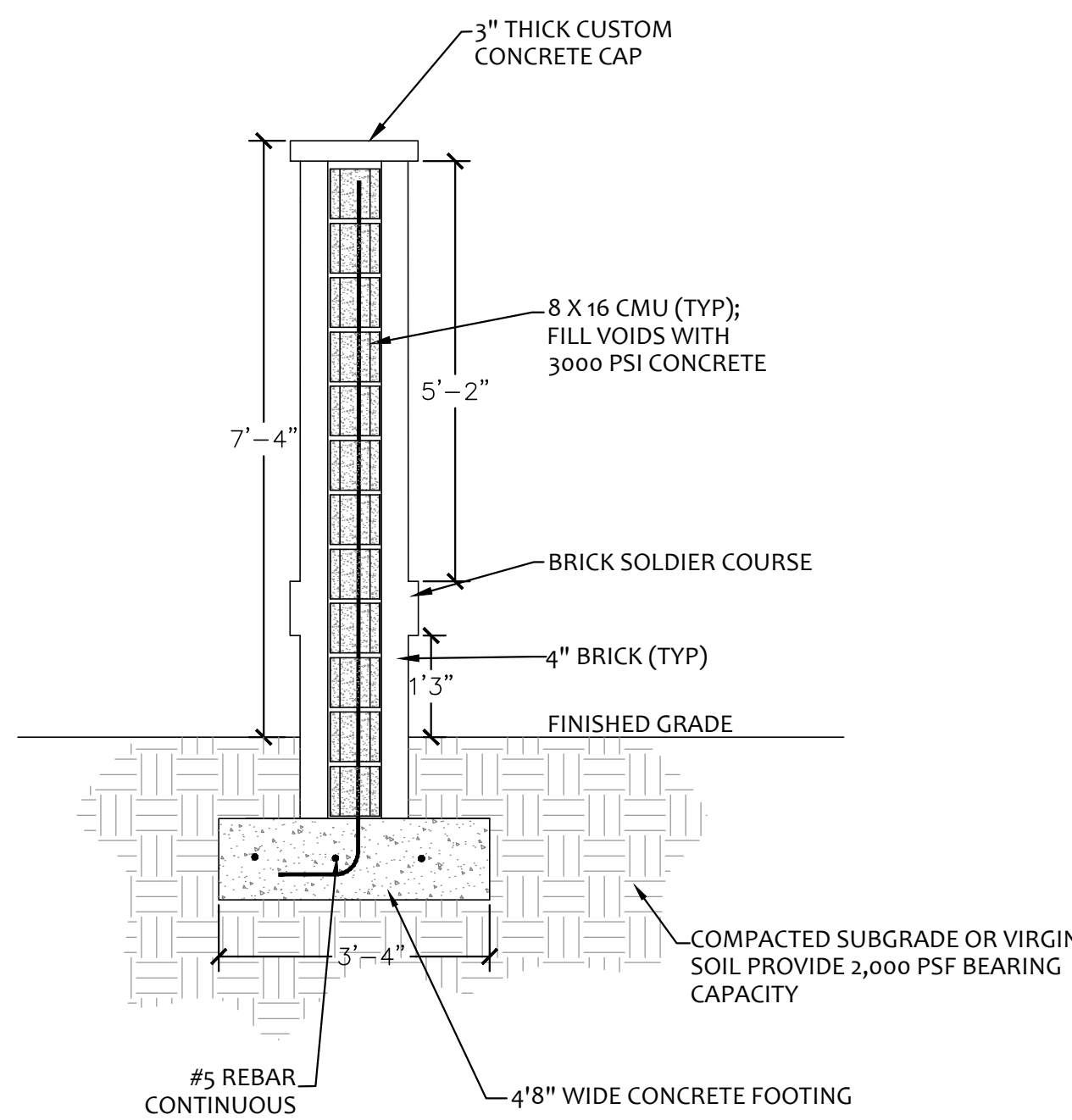
MONUMENT NOTES:

- ALL REINFORCED MASONRY WORK SHALL COMPLY WITH BUILDING CODE REQUIREMENTS AND SPECIFICATIONS FOR MASONRY STRUCTURES (TMS 402-13/ACI 530-13/ASCE 5-13 & TMS 602-13/ACI 530.1-13/ASCE 6-13A OR LATEST EDITION).
- ALL CONCRETE WORK SHALL COMPLY WITH THE SPECIFICATIONS FOR STRUCTURAL CONCRETE FOR BUILDINGS, ACI-301 AND THE BUILDING CODE REQUIREMENTS FOR STRUCTURAL CONCRETE, ACI-318 (EDITIONS IN FORCE).
- ALL WORK AND MATERIALS SHALL COMPLY WITH APPLICABLE STATE, LOCAL, NATIONAL CODES (INCLUDING OSHA) AND COMPLIANT WITH THE LATEST EDITION OF THE NATIONAL ELECTRICAL CODE.
- BASE MAP INFORMATION PROVIDED BY THE OWNER, LOCATIONS ARE APPROXIMATE AND SHALL BE FIELD VERIFIED.
- OBTAIN ALL REQUIRED PERMITS BEFORE STARTING CONSTRUCTION.
- CALL UTILITY LOCATOR SERVICE PRIOR TO ANY CONSTRUCTION ON THIS SITE. CONTRACTOR SHALL BE RESPONSIBLE FOR ANY DAMAGE DURING CONSTRUCTION.
- CONTRACTOR SHALL BE RESPONSIBLE TO DETERMINE THE LOCATION OF BOTH PUBLIC AND PRIVATE UNDERGROUND UTILITIES.
- DO NOT CHANGE THE DESIGN WITHOUT APPROVAL FROM THE LANDSCAPE ARCHITECT OR THE OWNER.
- CONCRETE SHALL REACH A MINIMUM COMPRESSIVE STRENGTH OF 3,000 PSI AT 28 DAYS.
- MASONRY GROUT SHALL REACH A MINIMUM COMPRESSIVE STRENGTH OF 3,000 PSI AT 28 DAYS.
- TYPE OF MORTAR SHALL BE 'S' AND MORTAR SHALL REACH A MINIMUM COMPRESSIVE STRENGTH OF 1,800 PSI AT 28 DAYS.
- YIELD STRENGTH OF REINFORCEMENT STEEL, Fy-60ksi.
- CMU ARRANGEMENT TO ACHIEVE DIMENSIONS IS THE RESPONSIBILITY OF THE CONTRACTOR.
- FOUNDATION SOIL BEARING CAPACITY SHALL BE A MINIMUM 2000 PSF BEARING CAPACITY AND SHALL BE VERIFIED BY A QUALIFIED GEOTECHNICAL ENGINEER.
- IF THERE ARE ANY CHANGES IN THE ENTRANCE MONUMENT WALL AND COLUMN, SOIL PROPERTIES, DESIGN DIMENSIONS, OR IF THE DESIGNS ARE INACCURATE, CONTACT TMTLA ASSOCIATES IMMEDIATELY FOR REVIEW OF THE DESIGN CHANGES.
- SEE SECTION DETAILS FOR REINFORCEMENT SCHEDULE AND ADDITIONAL DIMENSIONS.
- ALL HARDWARE SHALL HAVE A FINISH AS APPROVED BY OWNER.
- SOIL BACKFILL SHOULD NOT BE PLACED AGAINST THE ENTRY MONUMENT COLUMNS.
- EXCAVATION FOR FOOTING WILL HAVE ALL LOOSE MATERIAL REMOVED. CONCRETE TO BE POURED TO EXTENTS OF THE EXCAVATION UP TO VIRGIN SOIL TO ACHIEVE HORIZONTAL BEARING PRESSURES.
- SIGN SHALL NOT ENCROACH OR OVERHANG INTO THE RIGHT-OF-WAY OR SIGHT TRIANGLE.
- CONTRACTOR TO COORDINATE VENEER SELECTION W/ OWNER PRIOR TO ORDERING MATERIALS.
- FINAL DESIGN/CONSTRUCTION OF SIGN PANEL SHALL BE VERIFIED BY THE OWNER PRIOR TO ORDERING MATERIALS.



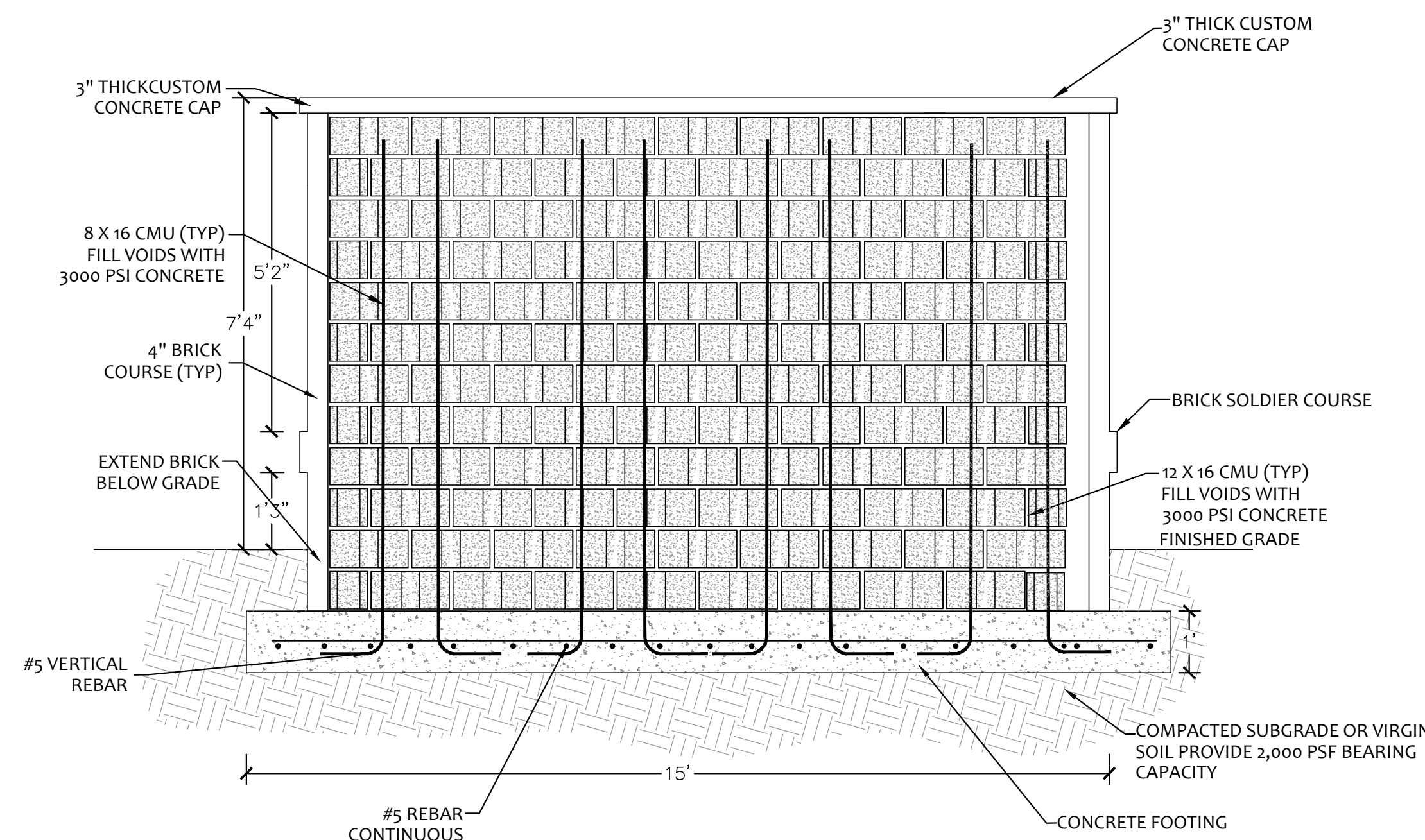
4 SIGN PANEL DETAIL- INTEGRATED CENTER

SCALE: 1/2"=1'-0"



5 SIGN SECTION DETAIL

SCALE: 1/2"=1'-0"



6 SIGN SECTION ELEVATION

SCALE: 1/2"=1'-0"



REVISIONS:

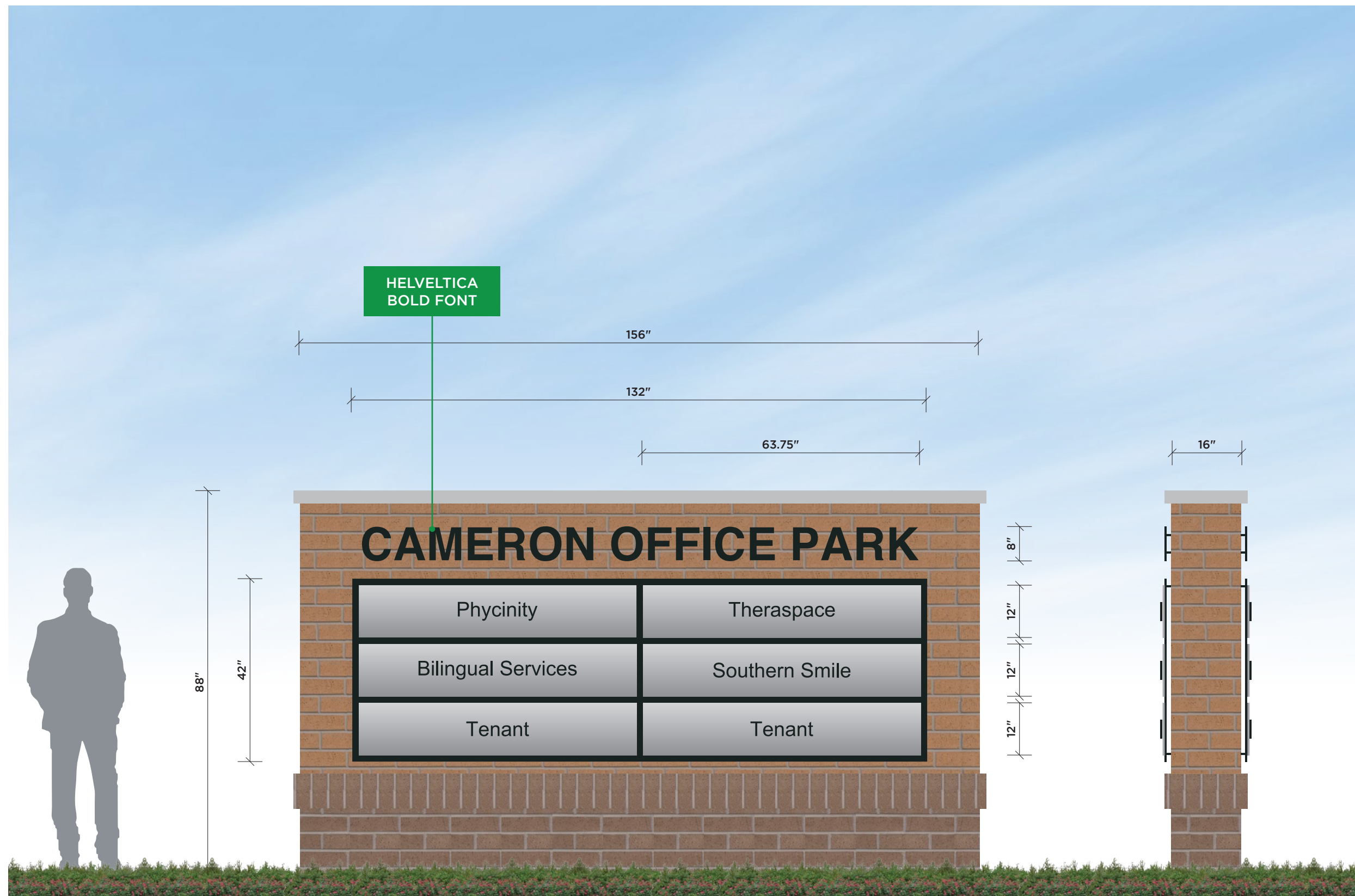
SIGN DETAILS
CAMERON COMMERCIAL
 2277 NC 24-87
 CAMERON, NORTH CAROLINA

SCALE:
 AS NOTED
 DRAWN BY:
 CDR
 PROJECT #
 23153
 DATE:
 1/8/2024

SHEET
L-2
 OF 3

CAMERON OFFICE PARK MONUMENT/MONUMENT SIGN OVERVIEW_OPTION B

MEASUREMENTS



ORDER NUMBER: 18691

DESCRIPTION:

Multi-tenant Concrete Monument Sign, double-sided, with dimensional letters and ground lighting.

DIMENSIONS:

156"(W) x 88"(H) x 16"(D)
95.33 SQ FT

FACE COLORS:

- BLACK
- SILVER
- BRICK 1 PALMETTO (.75 GREYSTONE)
- BRICK 2 PALMETTO (.25 GREYSTONE)

CONTACT INFO:

Tom Cohorst
tom@elitecustomsigns.com
919.917.7127
elitecustomsigns.com