



P.O. Box 884  
Sheffield, Alabama 35660

Tel: (256) 383-3176  
Fax: (256) 383-3170

---

## PROJECT INFORMATION

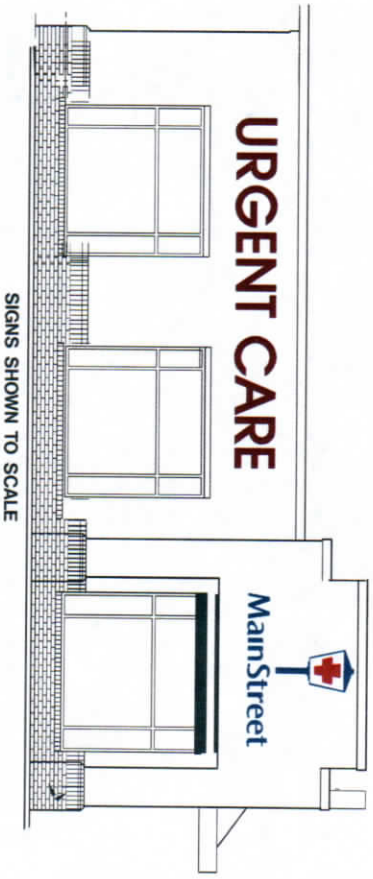
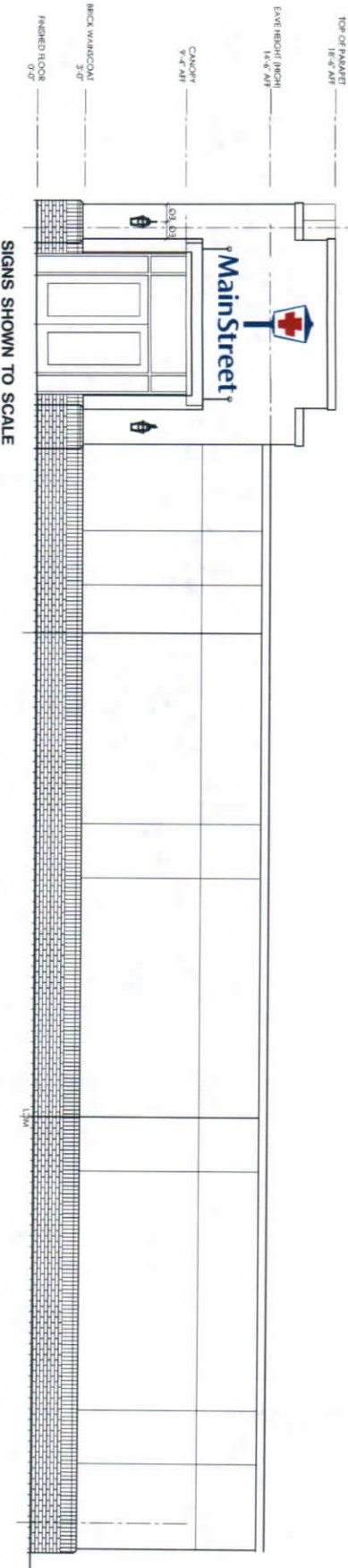
---

**JOBSITE ADDRESS:**  
25 PROFESSIONAL PARK  
ERWIN, NC

**PROPERTY OWNER:**  
East Mountain Development  
5387 E. Mountain Street  
Stone Mountain, GA 30083

**LESSEE:**  
MAIN STREET URGENT CARE  
1500 1st AVE NORTH, UNIT #3  
BIRMINGHAM, AL 35203

**INSTALL DATE**  
SEPT ±  
(CONSTRUCTION NOT STARTED)



SEE WALL SIGN DRAWINGS

6-30-22

MAIN STREET HEALTH  
25 PROFESSIONAL PARK  
ERWIN, NC



# URGENT CARE

28"

248"

## ELEVATION

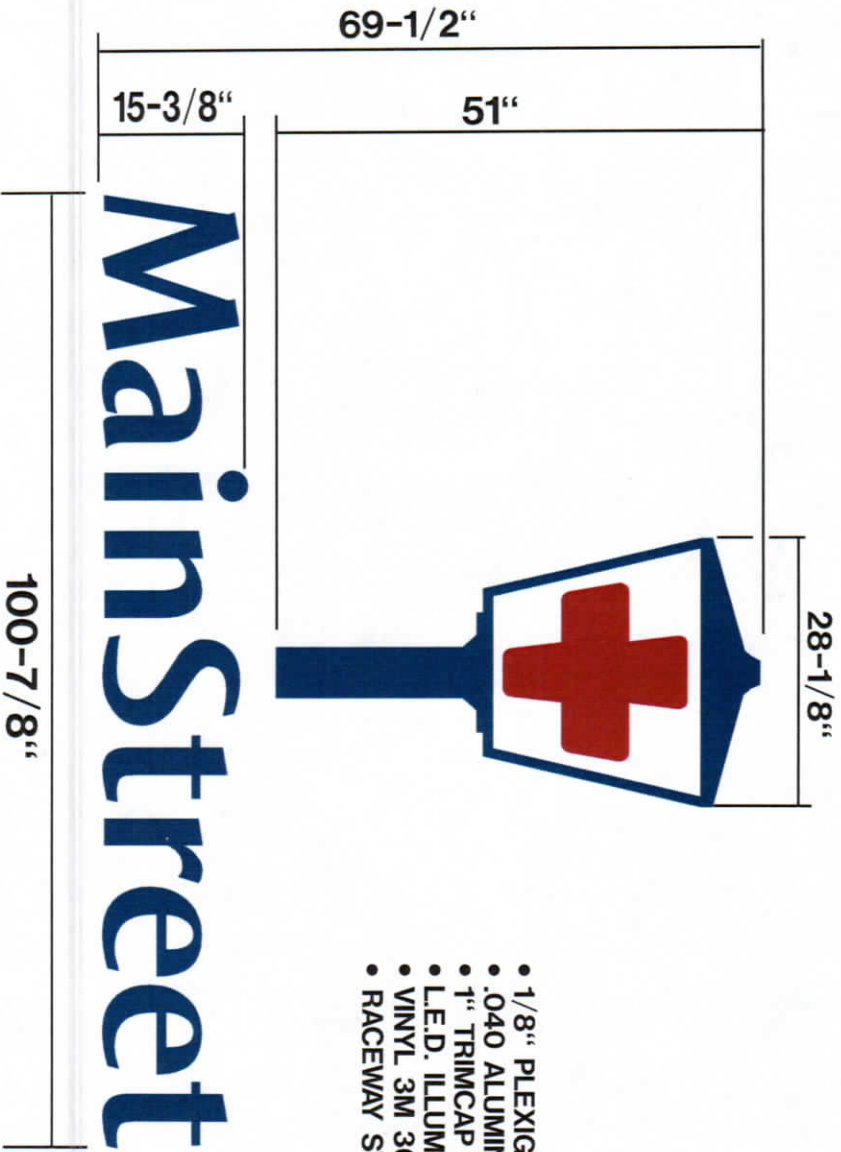
- 1/8" PLEXIGLAS 2283 RED
- .040 ALUMINUM RETURNS WHITE
- 1" TRIMCAP 2793 RED
- L.E.D. ILLUMINATION RED
- RACEWAY SW 301 CHINA WHITE

ONE SET LED INTERNALLY LIGHTED CHANNEL LETTERS.  
BURGUNDY FACES, BURGUNDY TRIM CAP, WHITE RETURNS.  
MOUNTED ON A RACEWAY THAT IS PAINTED THE COLOR OF THE STOREFRONT.  
ALL COLORS AS SPECIFIED

6-30-22

MAIN STREET HEALTH  
25 PROFESSIONAL PARK  
ERWIN, NC





- 1/8" PLEXIGLAS SG WHITE
- .040 ALUMINUM RETURN WHITE
- 1" TRIMCAP 2050 DARK BLUE
- L.E.D. ILLUMINATION WHITE
- VINYL 3M 3630-073 DARK RED
- RACEWAY SW-408 SANDALWOOD

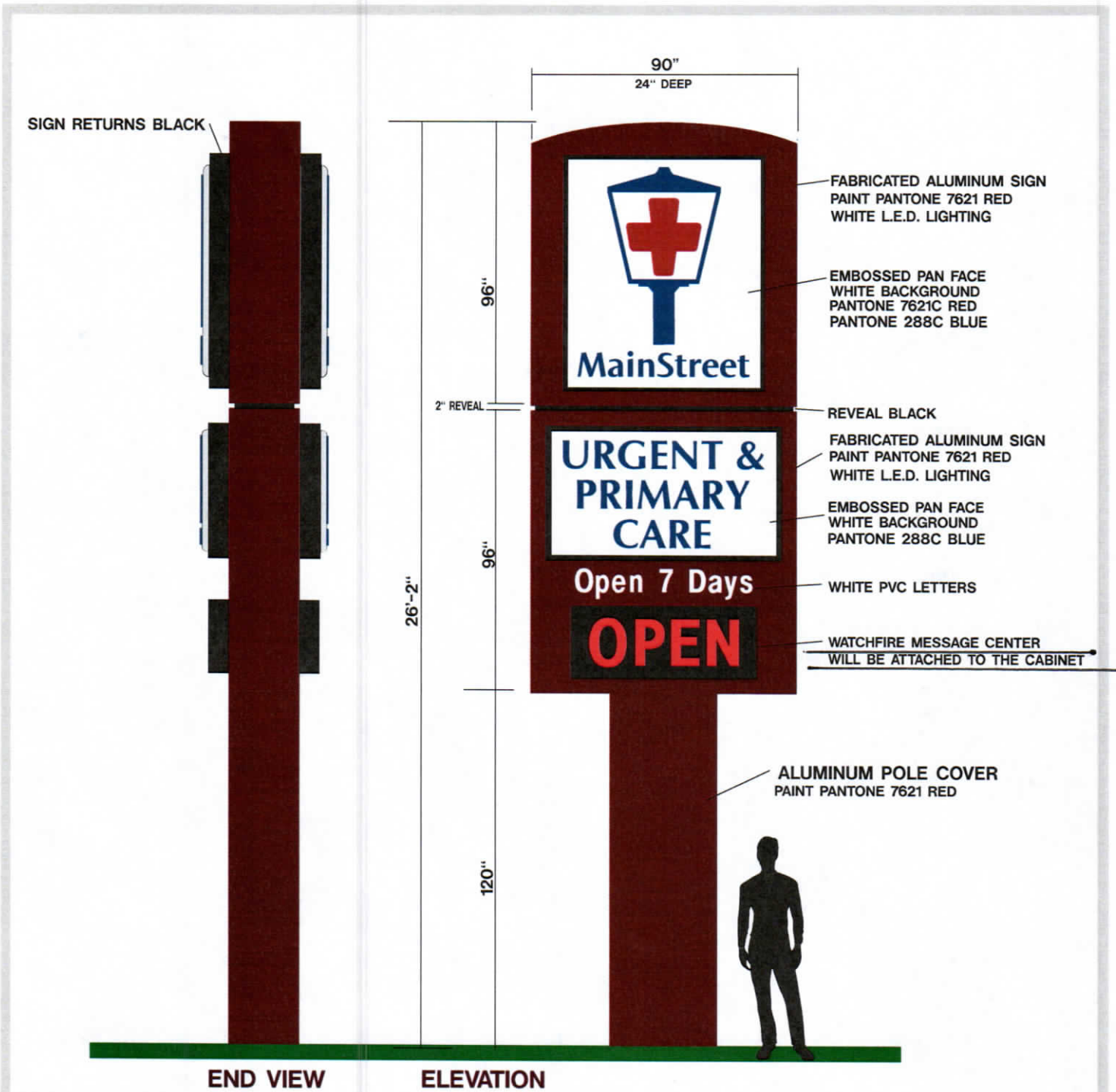
- 1/8" PLEXIGLAS 2050 BLUE
- .040 ALUMINUM RETURN WHITE
- 1" TRIMCAP 2050 DARK BLUE
- L.E.D. ILLUMINATION WHITE
- RACEWAY SW 408 SANDALWOOD

TWO SETS INTERNALLY LED LIGHTED CHANNEL LETTERS & LOGO  
 THE LETTERS, BLUE FACES, BLUE TRIM CAP, WHITE RETURNS.  
 THE LOGO, BLUE LANTERN, BLUE TRIM CAP WITH WHITE LENS.  
 RED CROSS ON THE WHITE LENS, WHITE RETURNS.  
 ALL THE ABOVE MOUNTED ON A RACEWAYS THAT IS PAINTED  
 THE COLOR OF THE STOREFRONT.

6-30-22

MAIN STREET HEALTH  
 25 PROFESSIONAL PARK  
 ERWIN, NC





**END VIEW**

**ELEVATION**

194" X 90", DOUBLE FACED, INTERNALLY LIGHTED PYLON SIGN.

THE TOP PANEL IS 96" X 90" WITH A 80" X 68", INTERNALLY LIGHTED SIGN WITH EMBOSSED PAN FACES THAT ARE PAINTED ON THE SECOND SURFACE.

2" REVEAL.

THE BOTTOM PANEL 96" X 90" WITH A 46" X 80" INTERNALLY LIGHTED SIGN WITH EMBOSSED PAN FACES, PAINTED ON THE SECOND SURFACE.

"Open 7 Days" NON-LIGHTED, ROUTED PVC.

25" X 63" RED DIGITAL SIGN TO FLASH "OPEN"

ALL INTERNAL LIGHTING WITH WHITE LEDs.

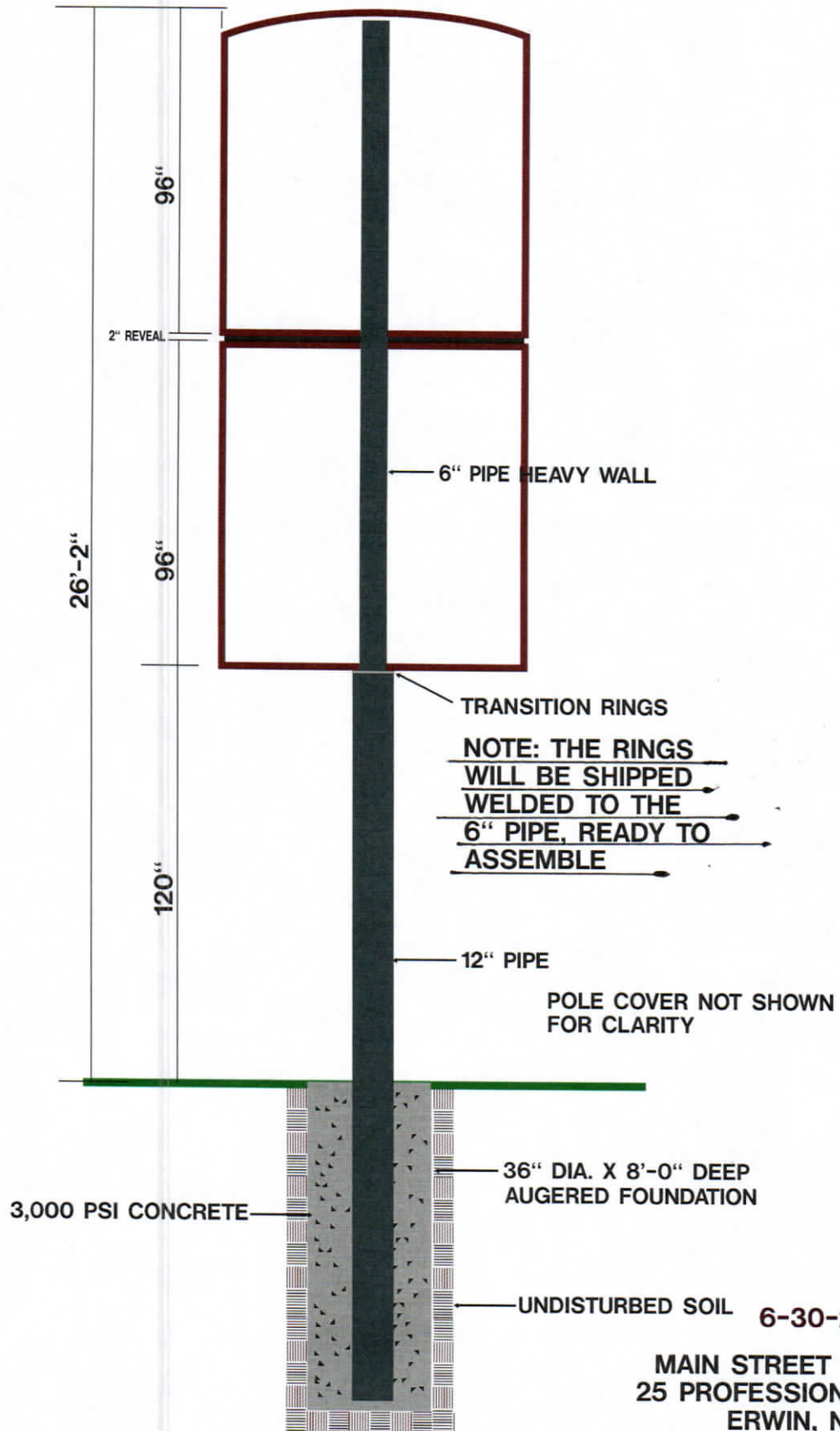
THE SIGN TO BE CENTER POLE MOUNTED WITH A 120" X 36" ALUMINUM POLE COVER. 3

THE OVER-ALL HEIGHT, 26'-2"

6-30-22

MAIN STREET HEALTH  
25 PROFESSIONAL PARK  
ERWIN, NC

**General**  
SIGN COMPANY



6-30-22

MAIN STREET HEALTH  
 25 PROFESSIONAL PARK  
 ERWIN, NC

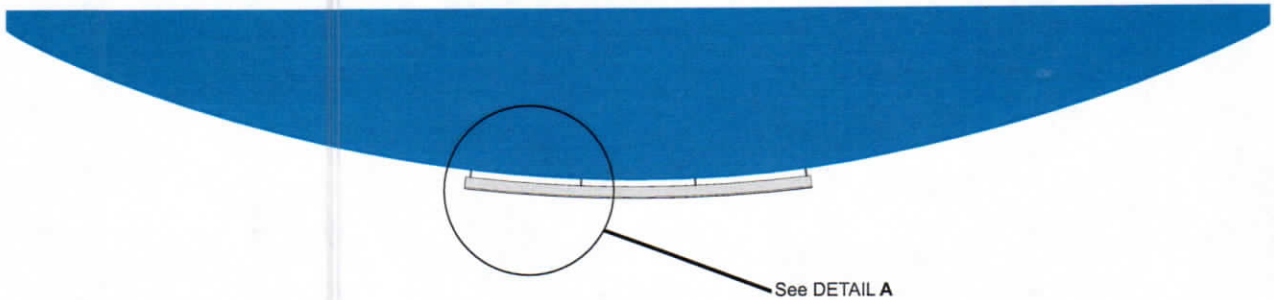


PYLON FOUNDATION & DETAIL

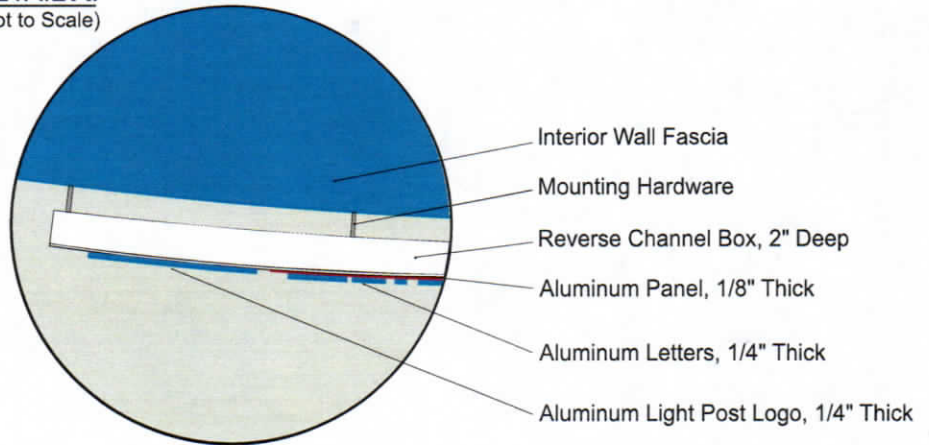
**FRONT VIEW**



**OVERHEAD VIEW (Showing Curve)**



**DETAIL A:**  
(Not to Scale)



**DESCRIPTION:**

18" x 80" SINGLE FACED, FABRICATED ALUMINUM SIGN.  
1/8" ALUMINUM, 2" REVERSE-LIGHTED CHANNEL WITH  
ROUTED 1/4" ALUMINUM LIGHT POST LOGO AND LETTERS  
THIS SIGN BUILT TO FIT THE WALL IN A RADIUS

**COLORS:**

WHITE ALUMINUM BACKGROUND  
PANTONE 7621C RED PANEL  
PANTONE 288C BLUE LETTERS

**6-30-22**

**MAIN STREET HEALTH  
25 PROFESSIONAL PARK  
ERWIN, NC**

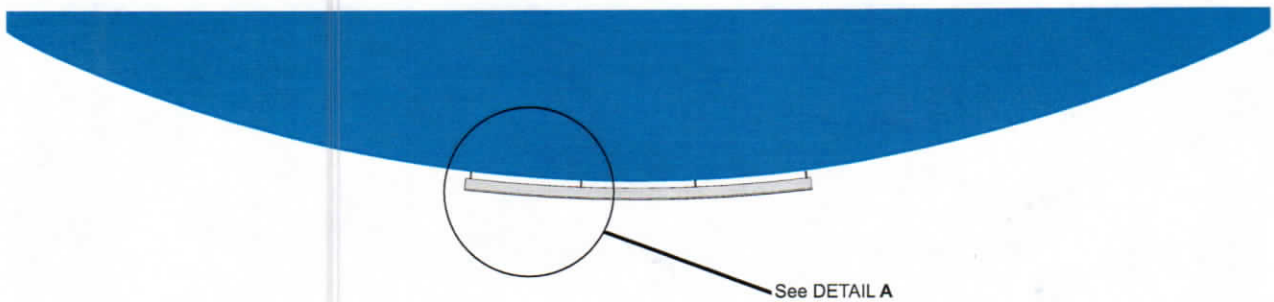
**INTERIOR SIGN**



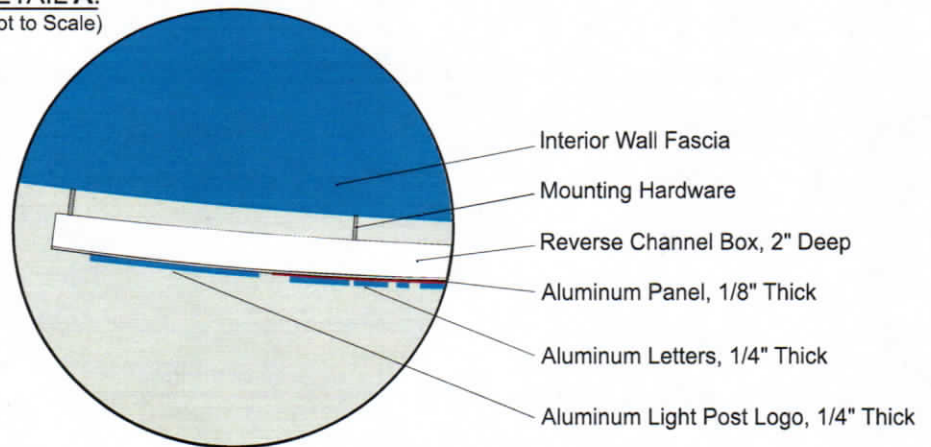
**FRONT VIEW**



**OVERHEAD VIEW (Showing Curve)**



**DETAIL A:**  
(Not to Scale)



**DESCRIPTION:**

18" x 80" SINGLE FACED, FABRICATED ALUMINUM SIGN.  
1/8" ALUMINUM, 2" REVERSE-LIGHTED CHANNEL WITH  
ROUTED 1/4" ALUMINUM LIGHT POST LOGO AND LETTERS  
THIS SIGN BUILT TO FIT THE WALL IN A RADIUS

**COLORS:**

WHITE ALUMINUM BACKGROUND  
PANTONE 7621C RED PANEL  
PANTONE 288C BLUE LETTERS

6-30-22

**MAIN STREET HEALTH**  
**25 PROFESSIONAL PARK**  
**ERWIN, NC**

**INTERIOR SIGN**

