

Current Sign Panel 72"H x
120"W 60 Sq. Ft.

★ ★ ★
★ **AMERICAN** ★
SELF STORAGE

20'H

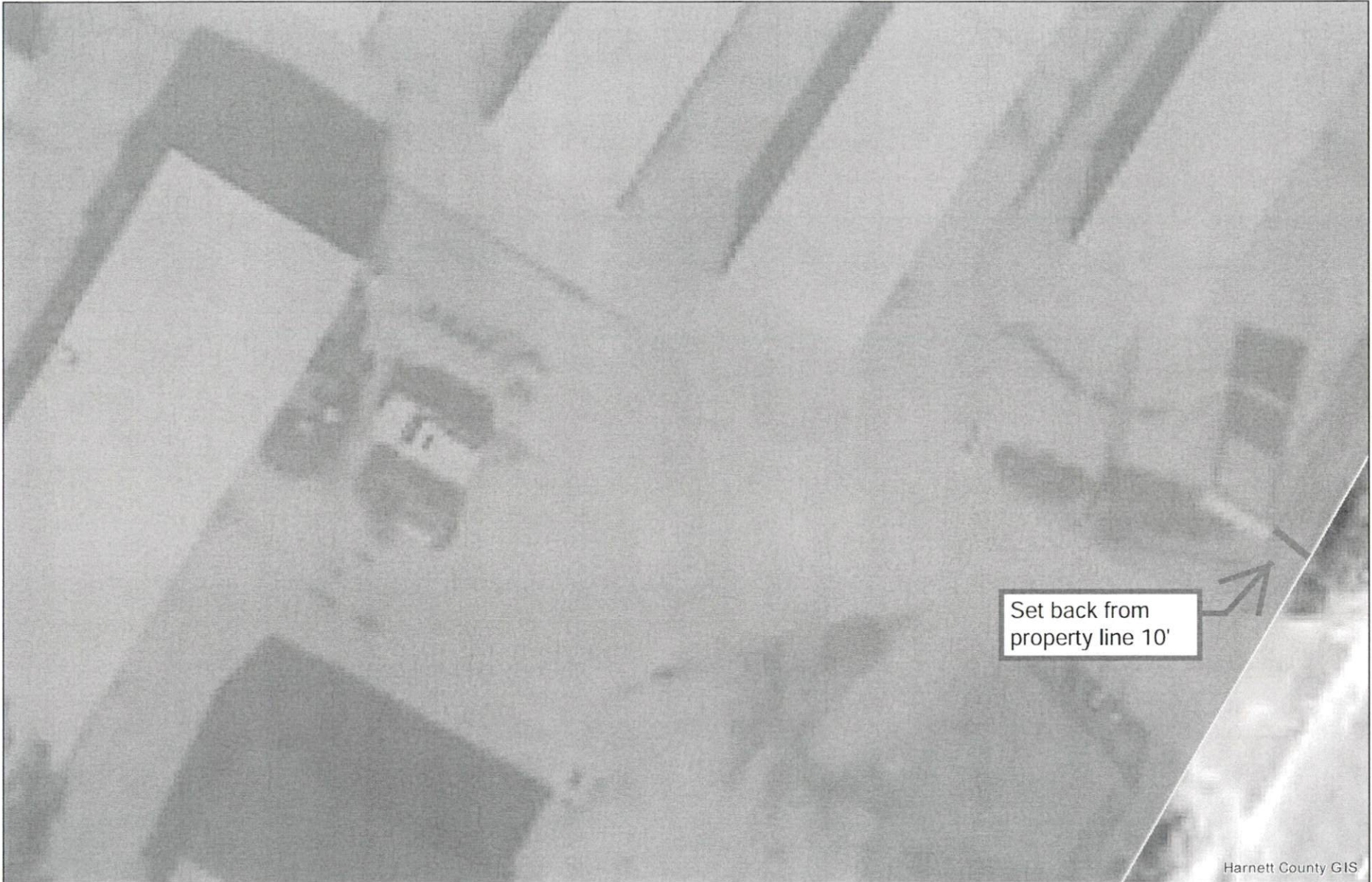
120"W
SPECIAL 10 \$80
10 \$35 10X 20 \$125
MILITARY DISCOUNT

Existing Message
Board 48"H x
96"W 32 Sq. Ft.

GEICO
MILITARY & FEDERAL
SAVINGS

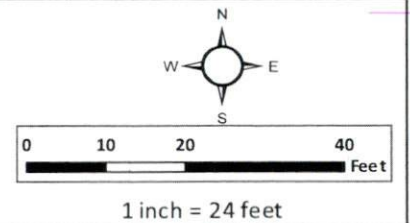
Harnett GIS

NOT FOR LEGAL USE



- | | | | |
|-------------------------------|--------------------|---------------------|-----------------|
| Surrounding County Boundaries | Airport | Roads | Cape Fear River |
| City Limits | Major Roads | Mile_Markers | |
| County Boundary | Interstate | Mile_Markers | |
| Address Numbers | NC | Railroad | |
| | US | Parcels | |

GIS/E-911 Addressing
June 24, 2022



ORDER #
1 of 1

Customer: Reliant Real Estate

Project: Spring Lake, NC

Salesperson: Don

Designer: Jo

Date: 6/22/22

Details:

Panformed Faces (top)

Flat Bottom Face

Pantone 655c

Pantone 375c

Back Painted

Contact: Brittany Houe

Phone: 407-739-8652

Address:
14396 NC-210 S
Spring Lake, NC 28390

Install P/U Ship Del.

Laminate: Gloss

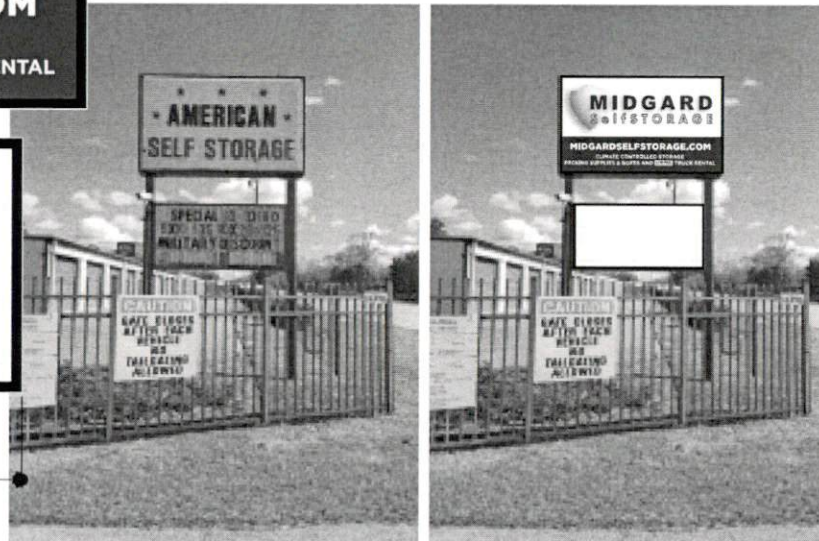
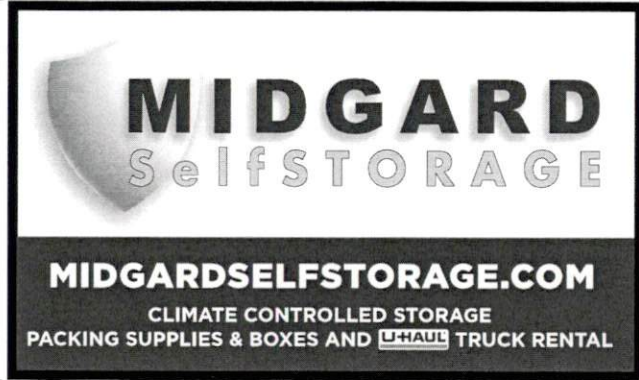
Grommets: NA

Size: See Drawing

Quantity: 2 Each

Revision: 1

File Name: Slake_Pylon_1



12" Zip Track Lettering
New Lexan Face
3/16"

File Path: P:\R\Reliant\Midgard\Spring Lake, NC

PLEASE READ PROOF CAREFULLY. ONCE APPROVED, PINNACLE CUSTOM SIGNS WILL NOT BE FINANCIALLY RESPONSIBLE FOR MISSPELLINGS OR INCORRECT LAYOUTS.
Disclaimer: Due to factory color calibration on computer monitors, the colors displayed are not guaranteed to be the actual colors. In order to approve the actual colors, you will need to request a hard-copy proof that will be printed on the actual material used for your project for an additional fee.

- APPROVED, NO CHANGES REQUIRED
- NOT APPROVED, PLEASE MAKE NOTED CHANGES

CUSTOMER SIGNATURE

