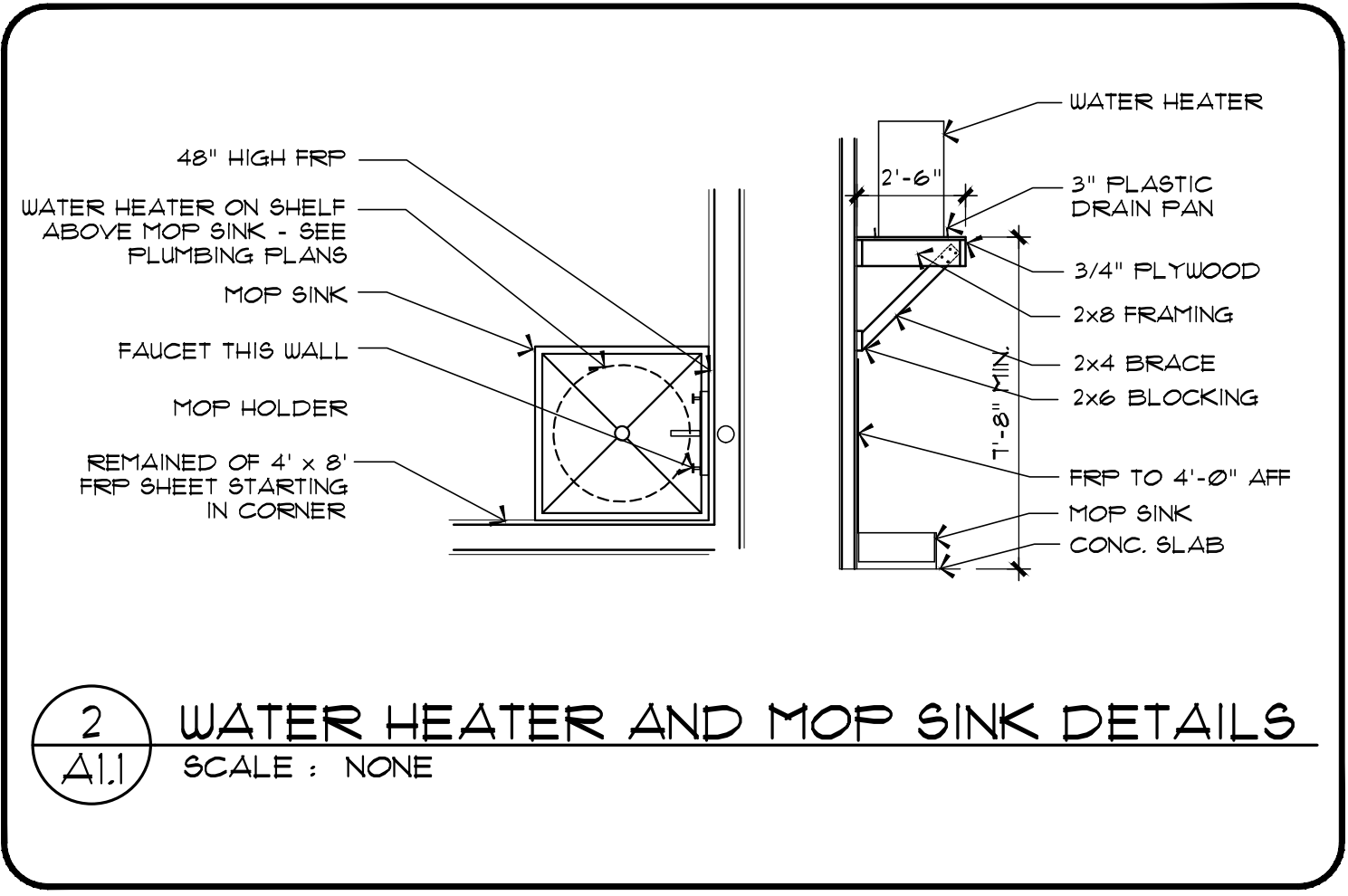


1 ARCHITECTURAL FLOOR PLAN (DGP21-C)
 SCALE: 1/8" = 1' - 0"
 10,751 SQUARE FEET

KEYED NOTES

- | | | |
|--|---|---|
| <p>1 RECEIVING DOOR BUZZER.</p> <p>2 2" DOOR SCOPE.</p> <p>3 WEATHERSTRIP AND LOW PROFILE THRESHOLD PROVIDED BY BASS SECURITY. REFER TO DOOR SCHEDULE.</p> <p>4 STRIPE FLOOR FOR DESIGNATED EGRESS PATH (FAINT YELLOW) AND DESIGNATED EGRESS PANEL CLEARANCE (FAINT RED).</p> <p>5 PROVIDE AND INSTALL A MIN. 10 GALLON WATER HEATER ON A SHELF ABOVE THE MOP SINK. REFER TO THE PLUMBING PLANS.</p> <p>6 2 x 6 INTERIOR STUD RECEIVING WALL WITH GYPSUM BOARD EACH SIDE. SEE STRUCTURAL.</p> <p>7 NOT USED.</p> <p>8 NOT USED.</p> <p>9 NOT USED.</p> <p>10 4" THICK CONCRETE SLAB WITH 6 x 6 x 14 WELDED WIRE MESH REINFORCEMENT OVER 10 MIL POLYETHYLENE VAPOR BARRIER OVER COMPACTED EARTH. SEE STRUCTURAL PLANS.</p> <p>11 NOT USED.</p> <p>12 2 x 6 EXTERIOR STUD WALL TO TRUSSES ABOVE. STUDS TO BE SPACED PER STRUCTURAL REQUIREMENTS. INCLUDE INSULATION WITH VAPOR BARRIER.</p> <p>13 4" NOMINAL BRICK VENEER WAINSCOT UP TO 4'-0" AFF. WITH FIBER CEMENT BOARD HORIZONTAL SIDING ABOVE SECURED TO PLYWOOD SHEATHING.</p> <p>14 SLOPE CONCRETE 1/8" PER FOOT AWAY FROM BUILDING.</p> <p>15 CONCRETE SIDEWALK BROOM FINISH TYPICAL. COORDINATE WITH CIVIL PLANS.</p> | <p>16 BRONZE AUTOMATIC OPENING DOOR STOREFRONT SYSTEM. SEE DOOR SCHEDULE FOR SIZE. CONTINUE GYPSUM BOARD ABOVE DOOR TO ROOF DECK AT INTERIOR SALES AREA DOOR.</p> <p>17 LINE OF ROOF OVERHANG (6") OR CANOPY ABOVE.</p> <p>18 A.D.A. COMPLIANT ACCESSIBLE RAMP WITH YELLOW PAINTED SIDES TO ACCESSIBLE PARKING SPACES. SEE CIVIL DRAWINGS.</p> <p>19 MC CUE CART AND BUMPER GUARDS. INSTALL TOP AT 3'-5" AFF. ORDER TRIM KIT FOR THIS PROTOTYPE.</p> <p>20 WALL HYDRANT. REFER TO PLUMBING DRAWING FOR ADDITIONAL INFORMATION.</p> <p>21 REFRIGERATION BY DOLLAR GENERAL.</p> <p>22 INTERIOR ROUND (SQUARE IS NOT ACCEPTABLE) STEEL COLUMN RECESSED UNDER CONCRETE SLAB. PROVIDE 16" x 16" KNOCKOUTS IN THE SLAB FOR THE COLUMN INSTALLATION. SEE THE STRUCTURAL DRAWINGS. STAIN THE KNOCKOUT AREA BLACK WRAP BOTTOM 4'-0" OF COLUMN WITH BLACK TIGHT LOOP CARPET. PAINT REMAINDER OF STEEL COLUMN SMOOTH PURE WHITE.</p> <p>23 CONTROL JOINTS SHALL BE LOCATED ALONG COLUMN LINES AND MID POINT BETWEEN COLUMN LINES. SEE THE STRUCTURAL DRAWINGS.</p> <p>24 2 x 4 INTERIOR STUD WALLS WITH 1/2" GYPSUM BOARD EACH SIDE. PROVIDE 2 x 6 STUDS FOR PLUMBING WASTE PIPING. EXTEND WALL TO THE BOTTOM OF TRUSSES ABOVE.</p> <p>25 2 x 4 INTERIOR STUD WALLS WITH 1/2" GYPSUM BOARD TO 10'-0" AFF WITH PAINTED ALUMINUM CAP.</p> <p>26 HVAC UNIT ON CONCRETE PAD. REFER TO MECHANICAL DRAWINGS FOR ADDITIONAL INFORMATION.</p> <p>27 POWER POLE. COORDINATE FINAL LOCATION WITH FINAL DOLLAR GENERAL FIXTURE PLAN. REFER TO ELECTRICAL SHEETS.</p> <p>28 REFRIGERATION AND NON-REFRIGERATION EQUIPMENT ON WALLS TO BE POWERED THROUGH OUTLETS. SEE ELECTRICAL. COORDINATE LOCATIONS WITH FINAL FIXTURE PLAN.</p> | <p>29 INCLUDE STEEL COLUMNS IN WALLS PER STRUCTURAL TO SUPPORT ENDS OF CENTRAL BEAM.</p> <p>30 NOT USED.</p> <p>31 NOT USED.</p> <p>32 MAINTAIN 2" AIR SPACE GAP BETWEEN THE REACH-IN COOLER / FREEZER AND THE WALL FOR VENTILATION.</p> <p>33 WALL OUTLETS FOR BANKS OF COOLERS AND FREEZERS. SEE ELECTRICAL FOR DETAILS. OUTLETS TO BE 11" FROM RIGHT SIDE OF UNITS AS YOU FACE THEM FROM THE SALES FLOOR.</p> <p>34 NON-REFRIGERATION EQUIPMENT (REGISTERS, HIGH KIOSK, ATM, KEYME) BY DOLLAR GENERAL.</p> <p>35 MC CUE RAILING IN FRONT OF ELECTRICAL PANELS. 8'-0" LONG WITH TOP TWO RAILINGS AND NO MIDDLE POST.</p> <p>36 FREESTANDING COOLER/FREEZERS (INCLUDING DISPLAY LIGHTING) TO BE HARDWIRED THROUGH WHITE 80 CORD. GO TO LEAVE BOTTOM HANGING AT 20" AFF. (SEE ELECTRICAL). CORD ANCHORED TO FURLINS ABOVE. COORDINATE LOCATION WITH FINAL DOLLAR GENERAL FIXTURE PLAN.</p> <p>37 AIR CURTAIN: SEE MECHANICAL DRAWINGS. USE 2x8 x 6" BLOCKING AS REQUIRED TO MOUNT AIR CURTAIN.</p> |
|--|---|---|



2 WATER HEATER AND MOP SINK DETAILS
 SCALE: NONE



4 JOB SITE SIGN DETAIL
 SCALE: NONE

JOHN P. WATKINS, ARCHITECT
 56 HILLMARK DRIVE
 COLUMBIA, SOUTH CAROLINA 29210

Craig A. Otto
 ARCHITECT, INC.
 DESIGN • PLANNING • ARCHITECTURE

5044 Augusta Road
 Lexington, South Carolina 29072
 Phone (803) 957-9004
 Fax (803) 957-2050

No.	Revisions	Date

All rights reserved. This drawing and the design shown thereon are copyrighted as prescribed by the laws of the United States and are the sole property of Craig A. Otto, Architect, Inc. Anyone duplicating, reproducing, or causing to be reproduced these drawings or the design thereon without permission of the architect will be subject to legal action.

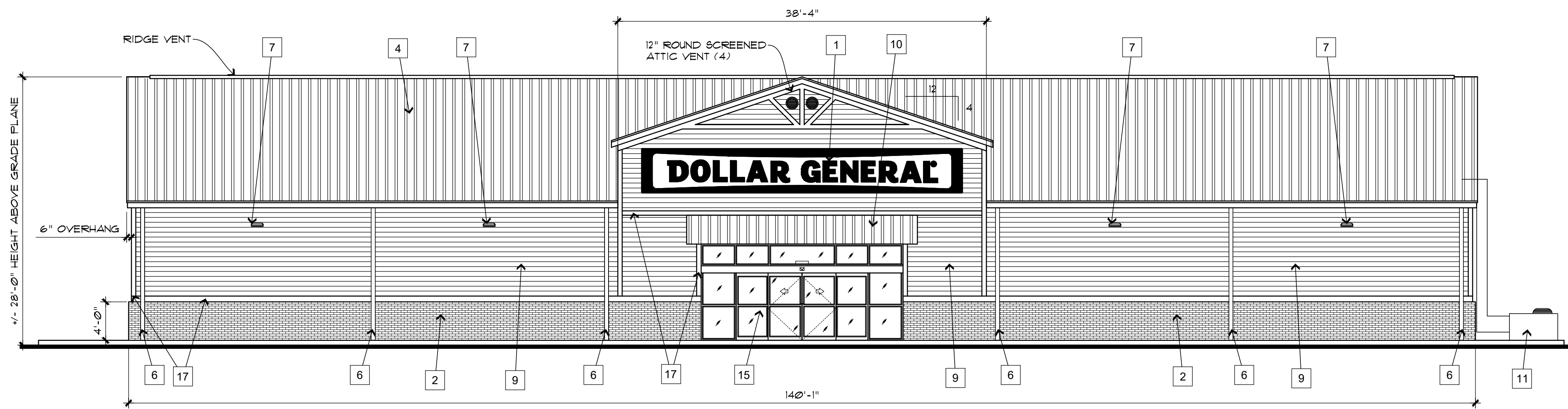
Project Title **DOLLAR GENERAL #23725**
 US 421 S, LILLINGTON, NC

Drawing Title **FLOOR PLAN AND DETAILS**

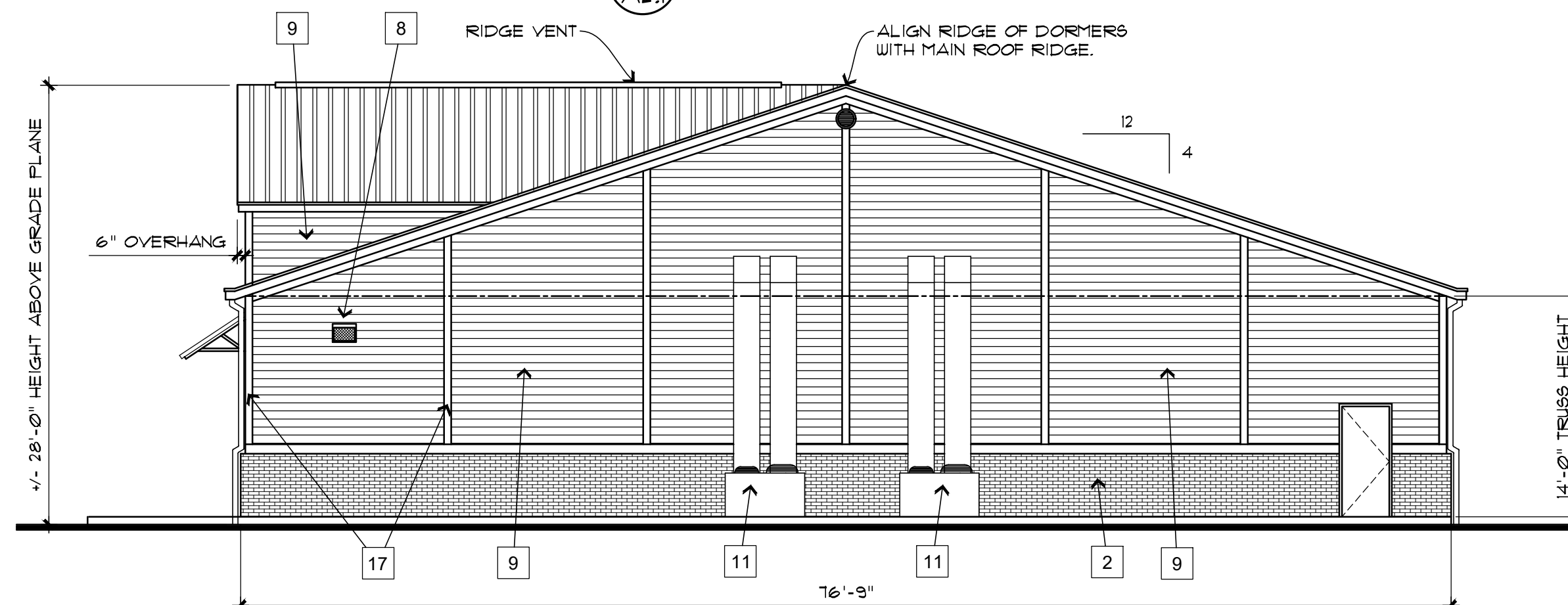
Consultant

Seal

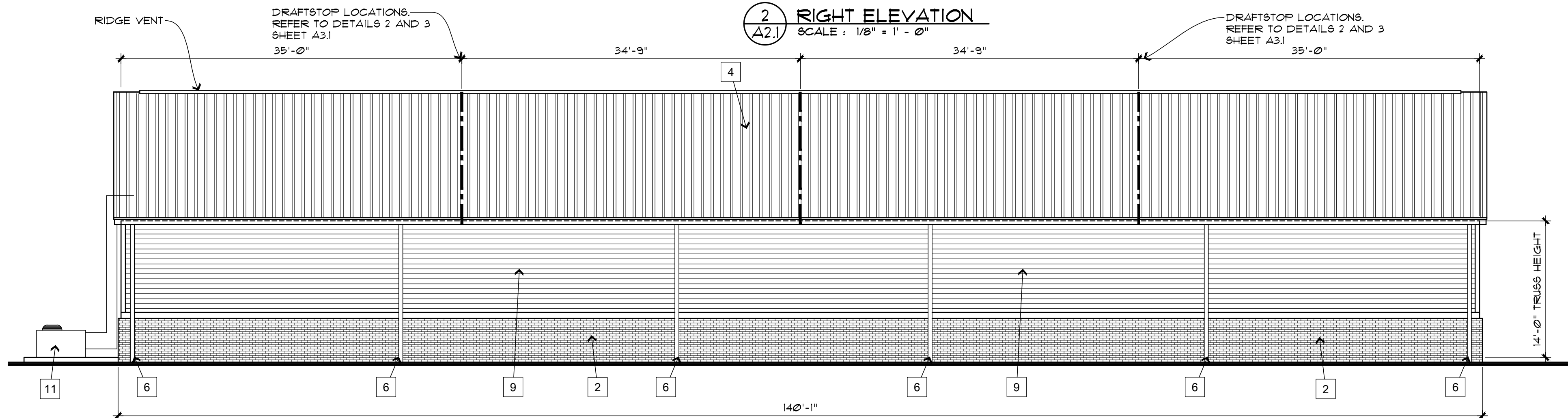
 Date **DECEMBER 8, 2021**
 Drawn By **OTTO**
 Drawing No. **A1.1**



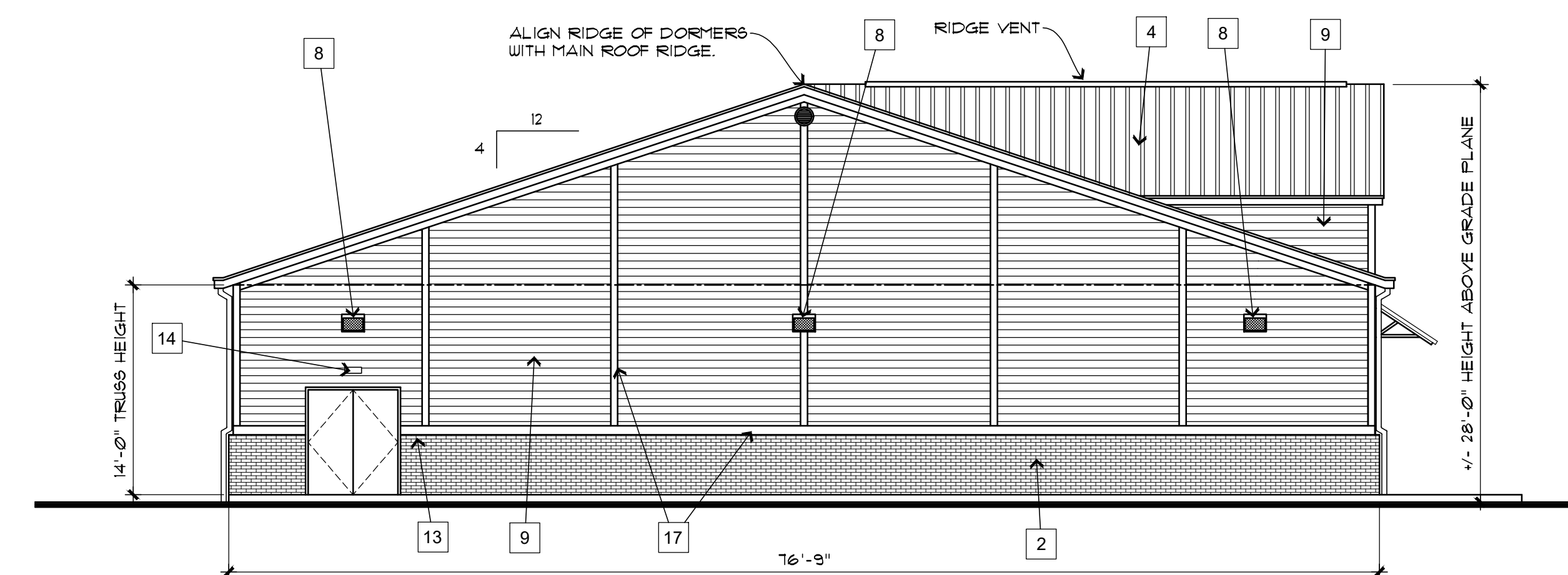
1 FRONT ELEVATION
SCALE: 1/8" = 1' - 0"



2 RIGHT ELEVATION
SCALE: 1/8" = 1' - 0"



3 REAR ELEVATION
SCALE: 1/8" = 1' - 0"



4 LEFT ELEVATION
SCALE: 1/8" = 1' - 0"

KEYED NOTES

- 1 SIGN FURNISHED AND INSTALLED BY DOLLAR GENERAL CORP. WITH CIRCUIT AS NOTED ON ELECTRICAL PLAN. SIGN SHALL BE CENTERED ON FRONT OF BUILDING. CONTRACTOR SHALL PROVIDE ADEQUATE BLOCKING AS REQUIRED BY SIGN MANUFACTURER TO SUPPORT SIGN WEIGHT OF UP TO 1400 POUNDS. SIGN SHALL BE SUPPORTED BY THE FACE OF THE CANOPY. COORDINATE THE PROPER SIZE OF SIGNAGE TO BE USED WITH DOLLAR GENERAL.
- 2 4" NOMINAL BRICK VENEER WAINSCOT UP TO 4'-0" AFF. SECURED TO PLYWOOD SHEATHING WITH ADJUSTABLE TYPE MASONRY ANCHORS AT 2'-0" O.C. VERTICALLY AND 16" O.C. HORIZONTALLY. BRICK SHALL BE OLD SAVANNAH BRICK WITH LAFARGE SANTAN MORTAR.
- 3 NOT USED
- 4 SCREW DOWN METAL ROOF PANELS PAINTED BURNISHED SLATE.
- 6 GUTTERS AND DOWNSPOUTS IN "AGED BRONZE" FINISH. ALL DOWNSPOUTS DISCHARGING IN NON-PAVED AREAS ARE TO HAVE MINIMUM 4 FOOT LONG PERFORATED LANDSCAPE PIPE STRAPPED TO A 12" x 24" CONCRETE SPLASH BLOCK.
- 7 AREA LIGHT 12'-0" AFF AT CENTERLINE OF CONNECTION TO WALL. REFER TO ELECTRICAL DRAWINGS FOR ADDITIONAL INFORMATION.
- 8 WALL PACK, 12'-0" AFF TO TOP OF WALL PACK. REFER TO ELECTRICAL DRAWINGS FOR ADDITIONAL INFORMATION.
- 9 FIBER CEMENT BOARD HORIZONTAL SIDING SECURED TO PLYWOOD SHEATHING. PAINT SW 6107 NOMADIC DESERT.
- 10 AWNING OVER STOREFRONT WITH METAL CANOPY ROOF. PROVIDE SCREW DOWN BRONZE METAL ROOF PANELS
- 11 HYAC UNIT ON CONCRETE PAD. REFER TO MECHANICAL DRAWINGS FOR ADDITIONAL INFORMATION AND REQUIRED HEIGHT.
- 12 VENT FOR BATHROOM EXHAUST. REFER TO MECHANICAL DRAWINGS. PAINT TO MATCH METAL WALL PANEL COLOR.
- 13 DOOR BUZZER. REFER TO ELECTRICAL DRAWING FOR ADDITIONAL INFORMATION.
- 14 OUTSIDE AIR TEMP. SENSOR MOUNTED OVER RECEIVING DOORS AT 8'-0" AFF.
- 15 AUTOMATIC DOOR AND WINDOW STOREFRONT SYSTEM IN BRONZE FINISH.
- 16 FINISH GRADE SHALL BE A MINIMUM OF 6" BELOW FINISHED FLOOR LEVEL AT ALL NON-PAVED AREAS.
- 17 PAINTED TRIM BOARDS IN TREATED WOOD MATERIAL OR FIBER CEMENT BOARD (CONTRACTOR'S OPTION). PAINT SW 6112 BISCUIT.

JOHN P. WATKINS, ARCHITECT
56 HILLMARK DRIVE
COLUMBIA, SOUTH CAROLINA 29210

Craig A. Otto
ARCHITECT, INC.

DESIGN • PLANNING • ARCHITECTURE

5044 Augusta Road
Lexington, South Carolina 29072
Phone (803) 957-9004
Fax (803) 957-2050

No.	Revisions	Date

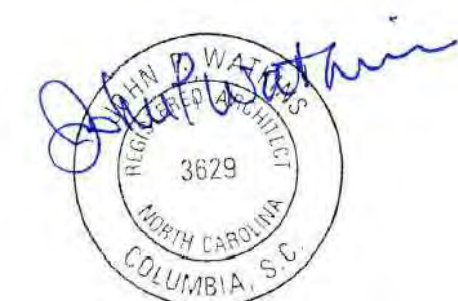
All rights reserved. This drawing and the design shown thereon are copyrighted as prescribed by the laws of the United States and are the sole property of Craig A. Otto, Architect, Inc. Anyone duplicating, reproducing, or causing to be reproduced these drawings or the design thereon without permission of the architect will be subject to legal action.

Project Title **DOLLAR GENERAL #23725**
US 421 S, LILLINGTON, NC

Drawing Title
EXTERIOR ELEVATIONS

Consultant

Seal



Date
DECEMBER 8, 2021

Drawn By
OTTO

Drawing No.

A2.1