

RAWLS CHURCH ROAD
(S.R.1415) 60' RIGHT-OF-WAY



CAROLINA LAND DEVELOPMENT GROUP INC.
ENGINEERING CONSULTANTS
LICENSE C-2743
NORTH CAROLINA
RALEIGH, N.C.

CAROLINA LAND DEVELOPMENT GROUP INC.
1304 N. RESPESS STREET, WASHINGTON, N.C. 27889
EMAIL: SPENCER@CLDGCRP.COM

HARNETT COUNTY PROJECT #:

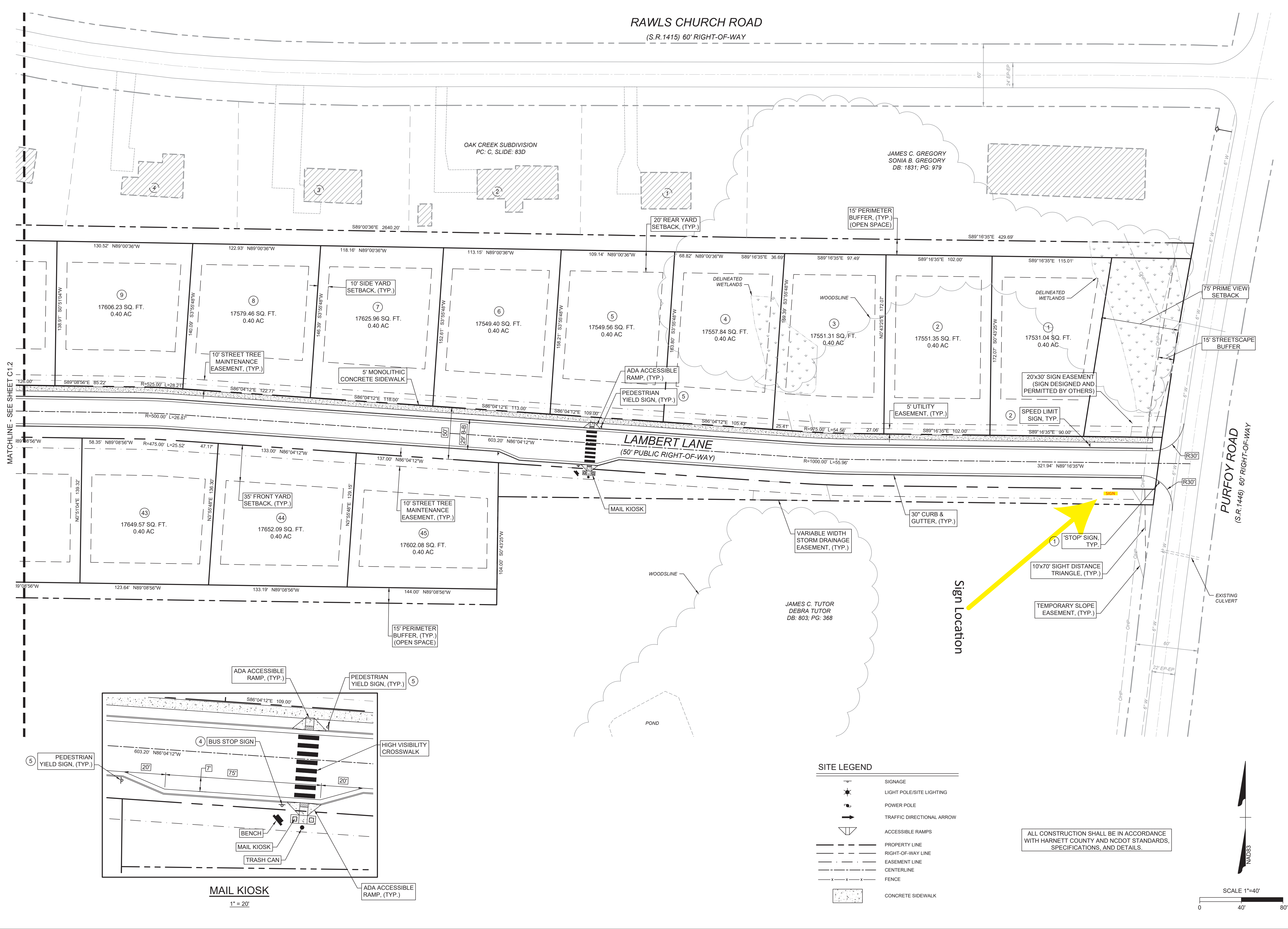
- 07/22/2019: REVISED LOT 27 AND 28
- 08/15/2019: REVISED GRADING AT CUL-DE-SAC, STORM DRAINAGE, WATERLINE
- 10/15/2019: REVISED MAIL KIOSK
- 11/04/2019: REVISED EROSION CONTROL-ADD DETAIL
- 12/10/2019: ADD SILT FENCE AT WETLANDS PER USACE

DATE: DECEMBER 10, 2019
ISSUED FOR: CONSTRUCTION

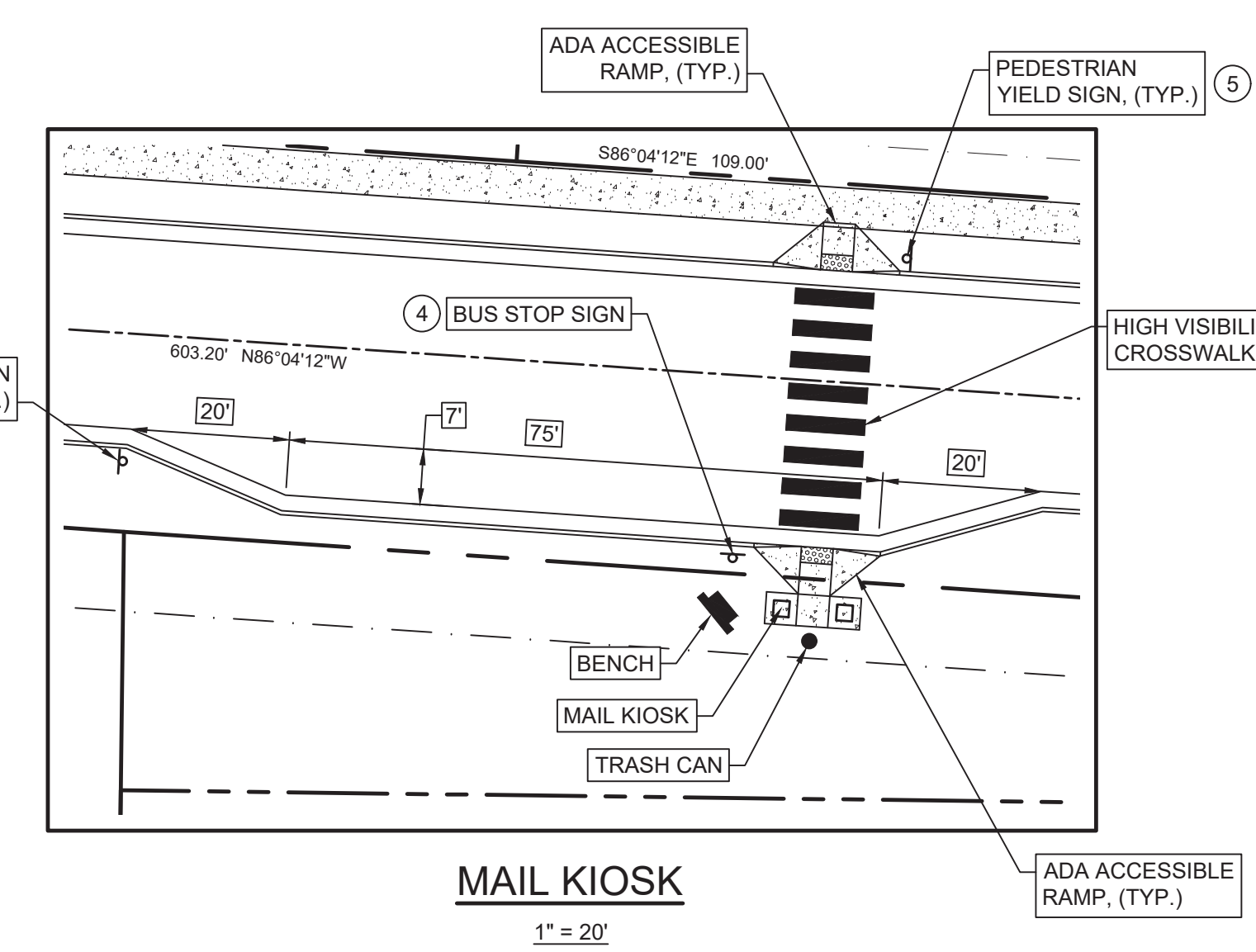
CONSTRUCTION DRAWINGS

SUBDIVISION PLAN

C 1.1
DRAWN BY: SBT CHECKED BY: SBT



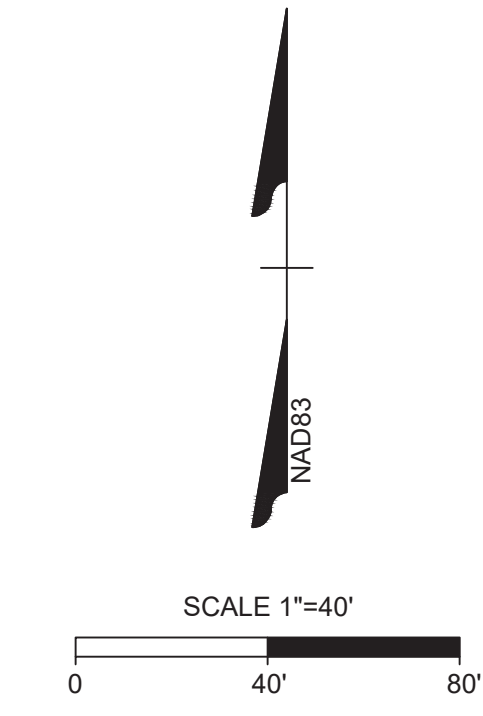
MATCHLINE - SEE SHEET C.1.2

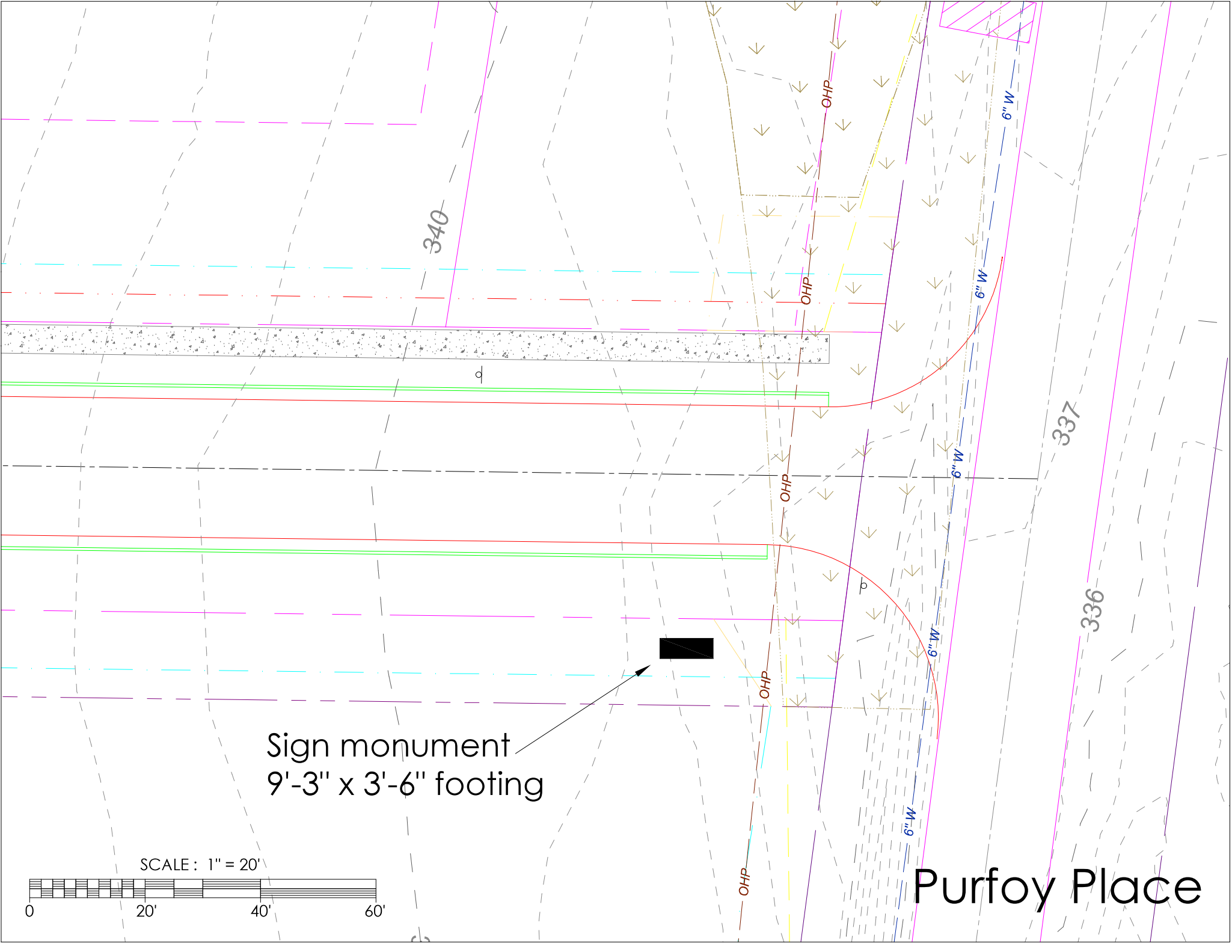


SITE LEGEND

	SIGNAGE
	LIGHT POLE/SITE LIGHTING
	POWER POLE
	TRAFFIC DIRECTIONAL ARROW
	ACCESSIBLE RAMPS
	PROPERTY LINE
	RIGHT-OF-WAY LINE
	EASEMENT LINE
	CENTERLINE
	FENCE
	CONCRETE SIDEWALK

ALL CONSTRUCTION SHALL BE IN ACCORDANCE WITH HARNETT COUNTY AND NCDOT STANDARDS, SPECIFICATIONS, AND DETAILS.





Sign monument
9'-3" x 3'-6" footing

SCALE: 1" = 20'



Purfoy Place