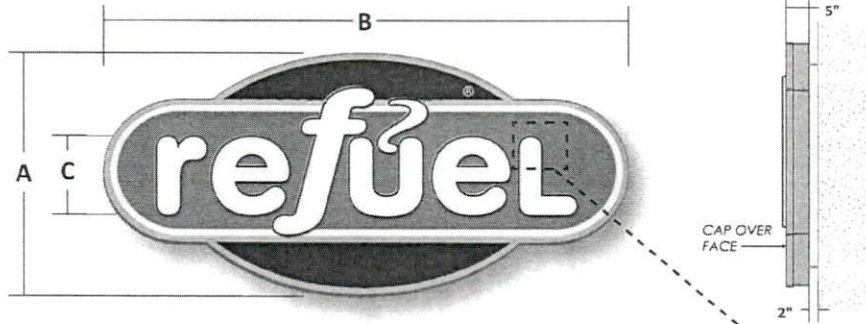
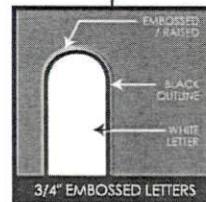


(1) RFL36 LED INTERNALLY ILLUMINATED SINGLE-FACE WALL SIGN



MODEL	A	B	C	SQ FT	⊙ Size
RFL24	2'-0"	4'-3 1/2"	7'-3 1/4"	8.6	1"
RFL30	2'-6"	5'-7 1/2"	9'-1 1/8"	13.5	1-1/4"
RFL36	3'-0"	6'-5 1/2"	11'-5/8"	19.4	1-1/2"
RFL42	3'-6"	7'-5 1/2"	13'-9 1/8"	26.4	1-3/4"
RFL48	4'-0"	8'-7 1/2"	15'-1 1/2"	34.5	2"
RFL60	5'-0"	10'-7 1/4"	17'-3/8"	53.8	2-1/2"
RFL72	6'-0"	12'-1 1/8"	19'-1 1/4"	77.5	3"



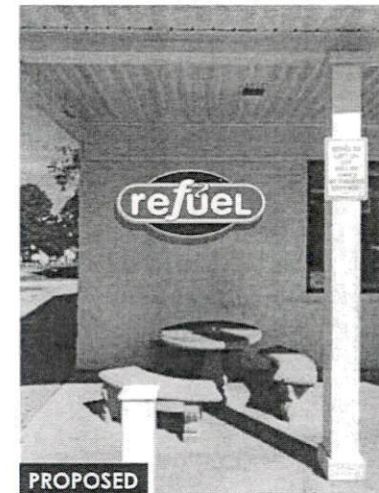
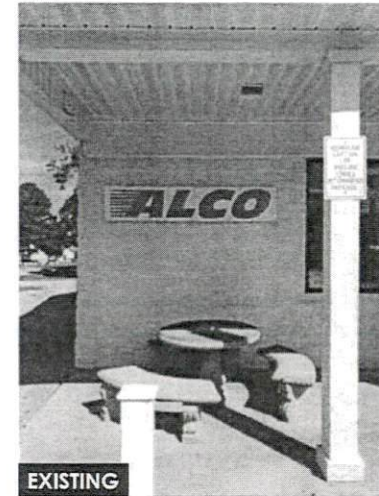
PRODUCTION DETAIL

- 5" DEEP ALUMINUM CABINET WITH "CAP-OVER" RETAINERLESS FACE.
- FLAT FULLY ILLUMINATED FACE WITH 3/4" EMBOSSED "REFUEL" LETTERS
- CLEAR POLYCARBONATE FACE W/ SECOND SURFACE PAINTED GRAPHICS
- RETURNS P/T/M PANTONE 583C
- CLEAR POLYCARBONATE BACK WITH HALO ILLUMINATION
- 2" STAND-OFFS
- ALL PARTS UL APPROVED.
- REMOVE EXISTING "ALCO" LOGO. PATCH/PAINT EXISTING FASCIA AS SHOWN.



PAINT COLORS

- PMS 179
- PMS 583
- PMS BLACK C
- WHITE



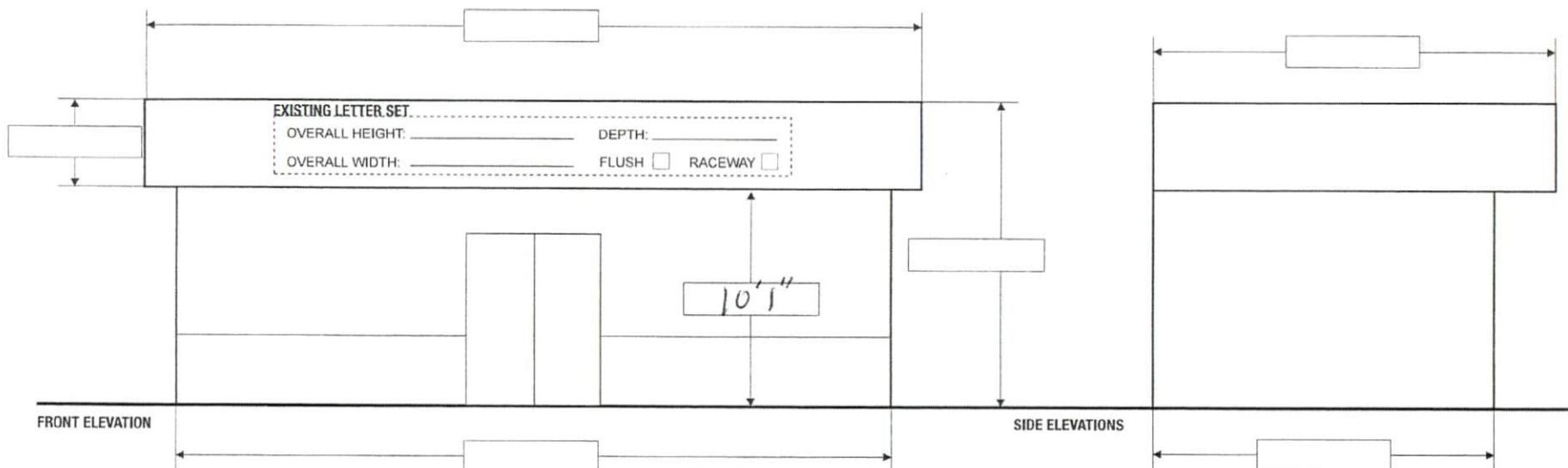
480 Millford Parkway • Millford, OH 45150
Phone 513-576-8090 • Fax 513-576-8093

START DATE: 10-26-21
REVISION DATES:
1. 11-8-21 3. _____ 5. _____
2. _____ 4. _____ 6. _____

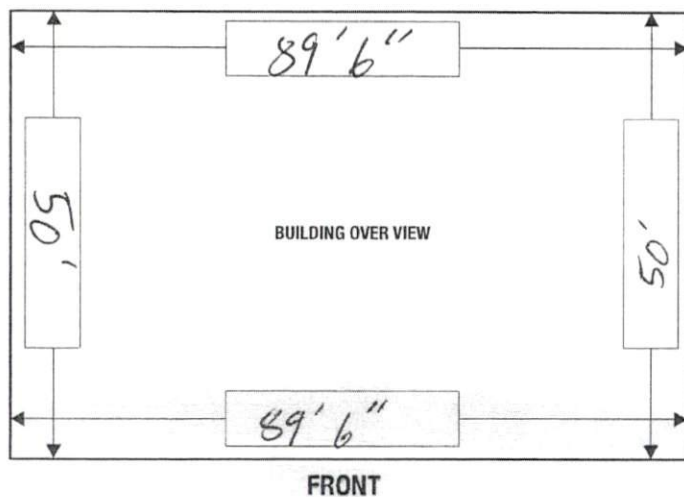
Illuminated Building Fascia Sign

REFUEL #152
277 North Carolina 24, Cameron, NC 28326

SALES: TJ MANAGER: LA DESIGN: JM
APPROVED BY: _____ DATE: _____



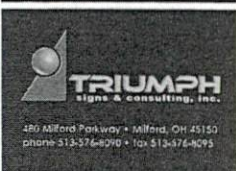
REAR



* IF BUILDING SHAPE DOES NOT COMPLY WITH ABOVE
PLEASE DRAW ON THE BACK OF THIS SHEET

NOTES

Comments:



SURVEY FORM

BUILDING / C STORE

©2001 Triumph Signs & Consulting, Inc. / All Rights Reserved
This drawing was created by Triumph Signs & Consulting, Inc. and remains the sole design element of Triumph and may not be reproduced or altered without consent from Triumph.