

SIGN INFORMATION:

ELECTRICAL DATA:
 LAMPS: (10) F60T12 CW/HO
 BALLAST: (2) EESB-832-16L
 CURRENT DRAW: 4.8 AMPS @ 120 VOLTS
 60 HZ , (1) 20 AMP CIRCUIT
 LUMENS: 54,000
 LUMENS PER SQ FT: 1174
 AREA IN SQ. FT: 50.94

EVERBRITE TO FURNISH:

1. 5'-1 1/2" X 10'-0 1/2" SIGN
2. MOUNTING POLE
3. TOUCH UP PAINT
4. CLADDING

INSTALLER TO FURNISH:

1. CONCRETE BASE
2. ALL ELECTRICAL COMPONENTS REQUIRED
3. INSTALLER TO BE SURE SIGNS ARE PROPERLY INSTALLED, CONNECTED AND GROUNDED

GENERAL CONTRACTOR TO FURNISH:

PRIMARY WIRES FROM BUILDING (OR SOURCE) TO AND INCLUDING THE CONNECTION TO THE POLE MOUNTED BREAKER BOX

CONCRETE SPECIFICATION:

0.76 CU. YDS. TOTAL. CONCRETE SHALL HAVE MIN. COMPRESSIVE STRENGTH OF 3,000 PSI @ 28 DAYS, REINFORCING STEEL SHALL HAVE MIN. YIELD STRENGTH OF 60,000 PSI. RECOMMENDED MIN. CURE TIME OF 7 DAYS BEFORE SIGN INSTALLATION

DESIGN NOTE:

SIGN, POLE AND CONCRETE FOUNDATION ARE DESIGNED TO WITHSTAND A WIND LOAD OF 27 P.S.F. CONCRETE FOUNDATION DESIGNED USING A LATERAL SOIL BEARING PRESSURE OF 300 PSF/FT OF DEPTH. IF THESE SOIL CONDITIONS DO NOT EXIST AT THE FOUNDATION LOCATION IT IS THE ERECTOR'S RESPONSIBILITY TO NOTIFY EVERBRITE, LLC. PRIOR TO ADDITIONAL EXCAVATION OR ANY CONCRETE PLACEMENT

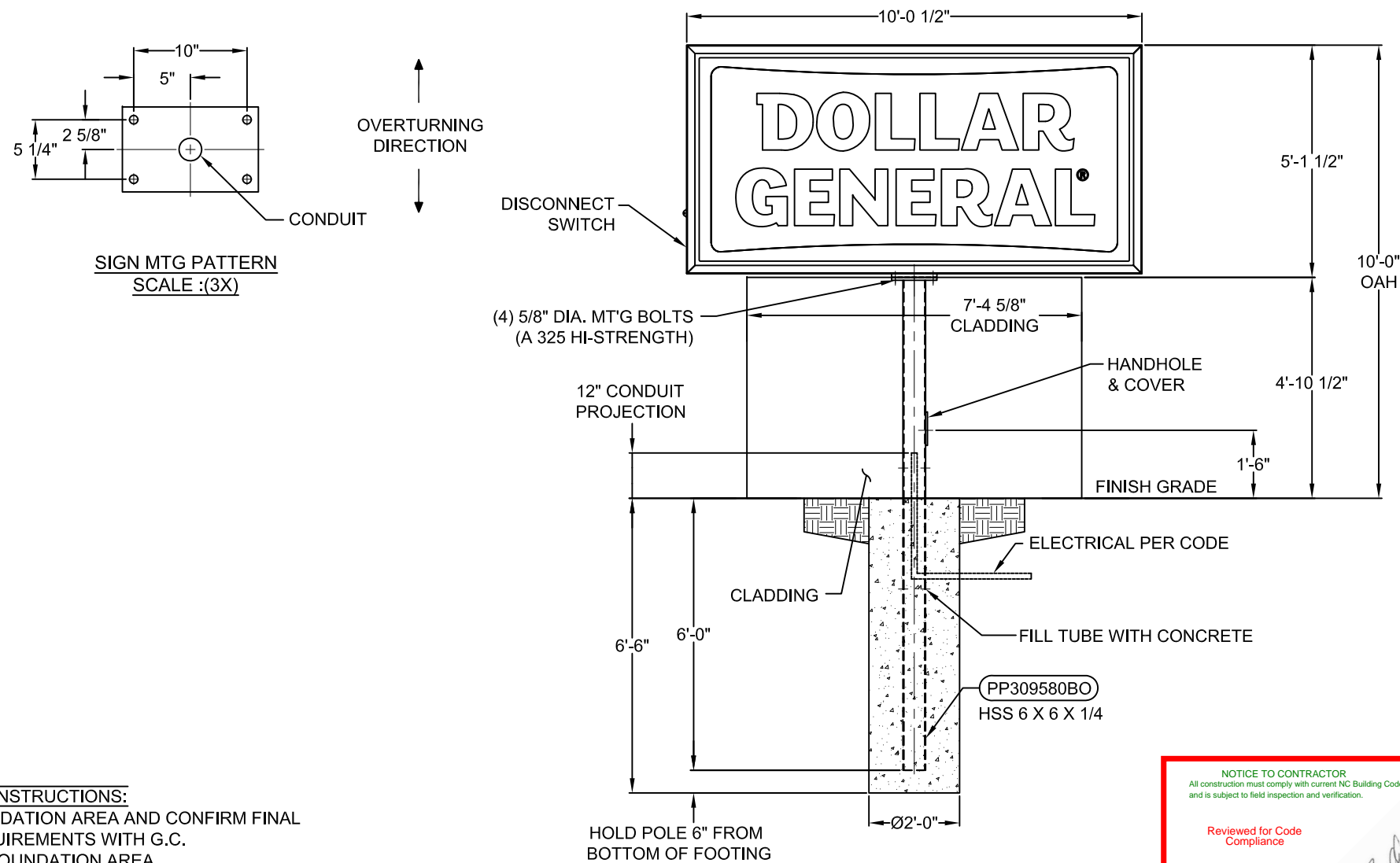
GENERAL NOTE:

INCLUDE COMPLETION PHOTOS OF MOUNTING / CONNECTION POINTS INCLUDING FOUNDATION, BASE PLATES, ANCHOR BOLTS, MATCH PLATE, WALL MOUNT, WELDING CONNECTIONS AND GROUT INSTALLATION IF APPLICABLE.

THIS SIGN IS INTENDED TO BE INSTALLED IN ACCORDANCE WITH THE REQUIREMENTS OF ARTICLE 600 OF THE NATIONAL ELECTRIC CODE AND/OR OTHER APPLICABLE LOCAL CODES. THIS INCLUDES PROPER GROUNDING AND BONDING OF THE SIGN.

INSTALLATION INSTRUCTIONS:

1. STAKE FOUNDATION AREA AND CONFIRM FINAL GRADE REQUIREMENTS WITH G.C.
2. EXCAVATE FOUNDATION AREA.
3. SET COLUMN PLUMB, INSTALL CONDUIT STUB AND POUR CONCRETE. (PRIMARY ELECTRICAL SERVICE TO BASE BY G.C.)
4. ALLOW CONCRETE CURE TIME AS REQUIRED.
5. MOUNT I.D. SIGN ON POLE (INSTALLER TO PROVIDE WIRE BETWEEN SIGN AND BASE OF POLE.
6. MAKE FINAL ELECTRICAL HOOK UP TO PRIMARY (ALL ELECTRICAL TO MEET LOCAL CODES.)
7. NOTE: INSTALLER IS REQUIRED TO PAINT THE POLE, COMPLETE, UPON ERECTION OF I.D. SIGN OR AS SOON AS WEATHER PERMITS.
8. TEST LIGHT SIGN AND TOUCH UP SIGN DRUM AS NEEDED.
9. REMOVE LIFTING BRACKET AND REINSTALL BOLT.
10. CLEAN UP AREA AND REMOVE ANY PACKING MAT'L.



NOTICE TO CONTRACTOR
 All construction must comply with current NC Building Codes and is subject to field inspection and verification.

Reviewed for Code Compliance
 10/13/2021

Signature

Harnett COUNTY
 NORTH CAROLINA

POLE SPECS
 4'-10 1/2" EXPOSED POLE
 10'- 10 1/2" TOTAL POLE LENGTH
 APPROX. WEIGHT 224 LBS.

REV.	DESCRIPTION	DATE	DRN	CHK
A	RELEASED TO INSTALL	7/29/14	IMPACT-TDT	RHB

DWG TITLE		SITE	
DOLLAR GENERAL P50 SIGN @ 10' OAH		STANDARD DRAWING	
DRN BY	DATE	SCALE	DWG NO.
IMPACT-TDT	7/25/14	1:40	IN04521B
CHK'D BY	DATE	PIF REF	REV.
RHB	7/29/14	309580-O	A

THESE DRAWINGS ARE THE EXCLUSIVE PROPERTY OF EVERBRITE, LLC. USE OF, OR DUPLICATION IN ANY MANNER WITHOUT EXPRESS WRITTEN PERMISSION OF EVERBRITE, INC. IS PROHIBITED.

Everbrite
 4949 SO. 110TH ST.
 P.O. BOX 20020
 GREENFIELD, WI 53220
 414-529-3500