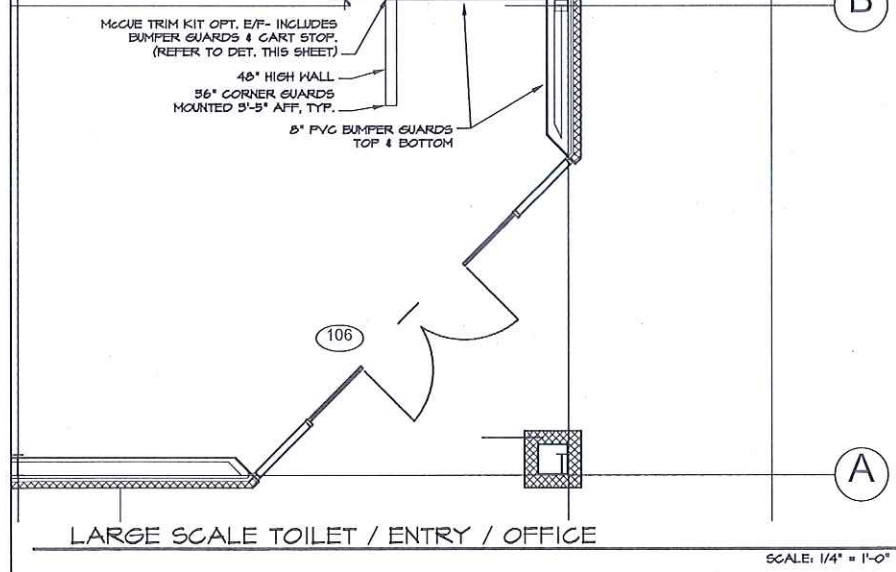
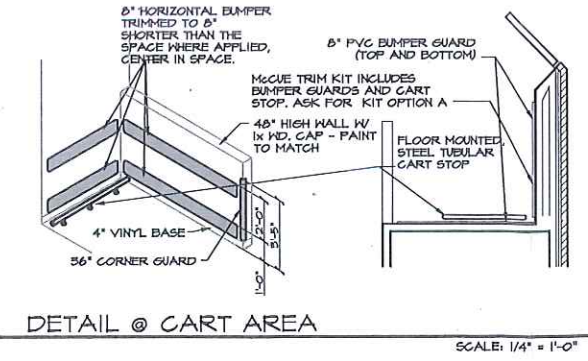


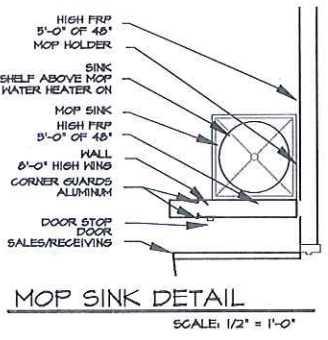
FLOOR PLAN NOTE: ALL CONTRACTORS SHALL REVIEW & MAINTAIN 11 X 17 DOLLAR GENERAL CURRENT PROTOTYPE PLAN "E" BUILD-TO-SUIT PACKAGE ON JOB SITE SCALE: 1/8" = 1'-0"



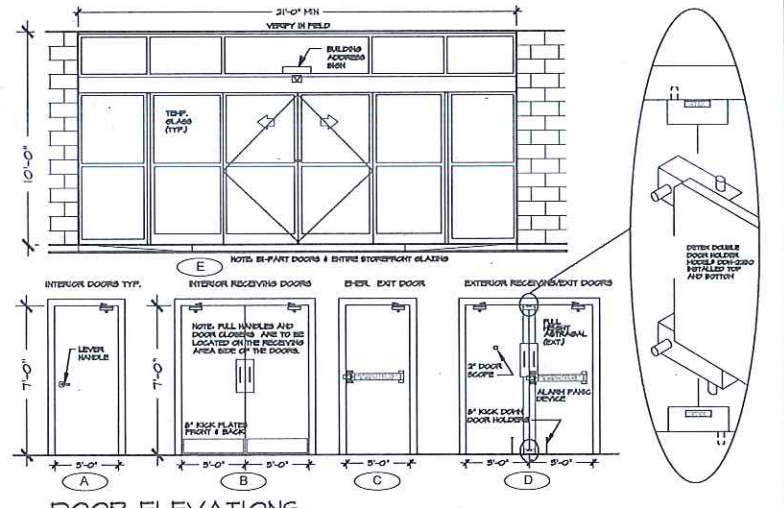
SCALE: 1/4" = 1'-0"



SCALE: 1/4" = 1'-0"



SCALE: 1/2" = 1'-0"



SCALE: 1/4" = 1'-0"

ROOM FINISH SCHEDULE											
NO	ROOM NAME	FLOOR	FINISH	BASE	A WALL	B WALL	C WALL	D WALL	CEILING MATERIAL	CEILING FINISH	REMARKS
100	BREAK RM	CONCRETE FLOOR SEALED	CONCRETE SEALER	4\"/>							

DOOR SCHEDULE				HARDWARE		REMARKS	
NO.	TYPE	HEIGHT	THICK.				
100	(BREAK ROOM)	A	5'-0"	1-1/2"	1-1/2"	(1) STANLEY PARABOLIC LOCKSET 62120-2-84-84-84 - NO KEY REEDS, (2) STANLEY DOOR CLOSER 62001-484	SOLID CORE HOLLOW CORE METAL DOOR & FRAME PAINTED 691-BLACK HAZOP, 694 624-6209



ISSUED FROM: WILMINGTON OFFICE
 805 North Fourth Street
 Wilmington, NC 28401
 Phone: 910.251.8999
 Fax: 910.251.8999

HOOD • HERRING
 ARCHITECTURE
 P.L.L.P.

These documents are instruments of service & as such are the property of the Architect. Reproduction without written permission is prohibited.

DOLLAR GENERAL
 STORE # 22524
 RAY ROAD
 SPRING LAKE, NORTH CAROLINA

JOB NUMBER
 DRAWN BY: MWH
 DATE: 03/01/21
 REVISIONS

SHEET NUMBER
A-1
 OF