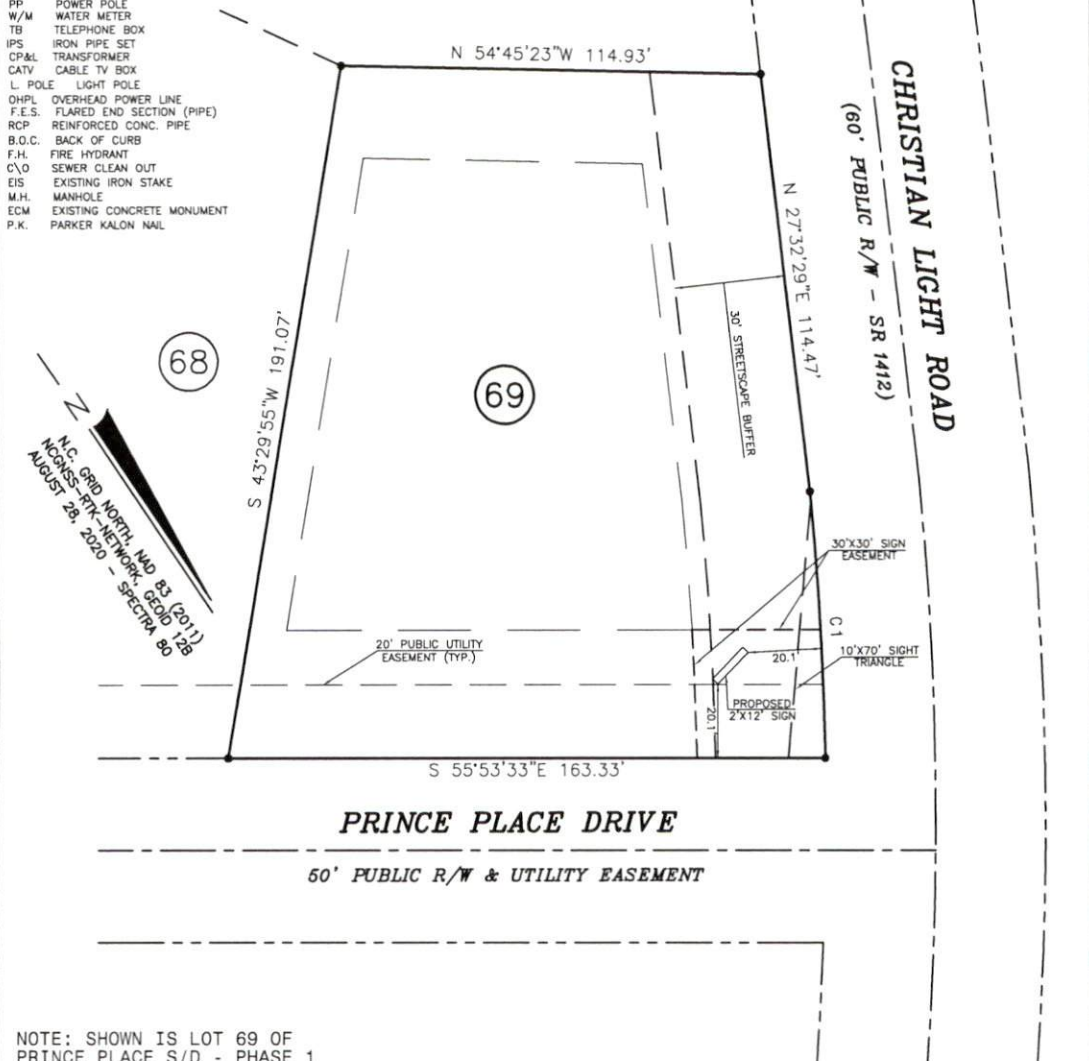


Curve	Radius	Length	Chord	Chord Bear.
C1	940.29'	72.65'	72.63'	N 30°49'54" E

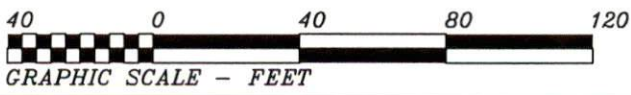
- LEGEND**
- NTS NOT TO SCALE
  - EIP EXISTING IRON PIPE
  - PP POWER POLE
  - W/M WATER METER
  - TB TELEPHONE BOX
  - IPS IRON PIPE SET
  - CP&L TRANSFORMER
  - CATV CABLE TV BOX
  - L POLE LIGHT POLE
  - OHPL OVERHEAD POWER LINE
  - F.E.S. FLARED END SECTION (PIPE)
  - RCP REINFORCED CONC. PIPE
  - B.O.C. BACK OF CURB
  - F.H. FIRE HYDRANT
  - C/O SEWER CLEAN OUT
  - EIS EXISTING IRON STAKE
  - M.H. MANHOLE
  - ECM EXISTING CONCRETE MONUMENT
  - P.K. PARKER KALON NAIL

BARBARA H. FORE  
D.B.635, PG.381



NOTE: SHOWN IS LOT 69 OF  
PRINCE PLACE S/D - PHASE 1  
REF: M.B.2021, PG.XXX

AREA = 0.604 ACRES  
XXX PRINCE PLACE DRIVE



THIS IS TO CERTIFY THAT THIS MAP WAS PREPARED FROM AN ACTUAL SURVEY OF THE PREMISES, MADE UNDER MY SUPERVISION, AND THAT THERE ARE NOT ANY ENCROACHMENTS, EXCEPT AS NOTED TO THE BEST OF MY KNOWLEDGE. THAT THE RATIO OF PRECISION AS CALCULATED BY LATITUDES AND DEPARTURES IS 1:10,000. THIS MAP WAS PREPARED FOR TITLE COMPANY USE AND IS NOT INTENDED FOR RECORDATION OR CONVEYANCES WITHOUT WRITTEN AUTHORIZATION OF THE SURVEYOR AND OTHER APPROPRIATE OFFICIALS.

PROFESSIONAL LAND SURVEYOR  
L-3247

PRELIMINARY PLOT  
NOT FOR RECORDATION

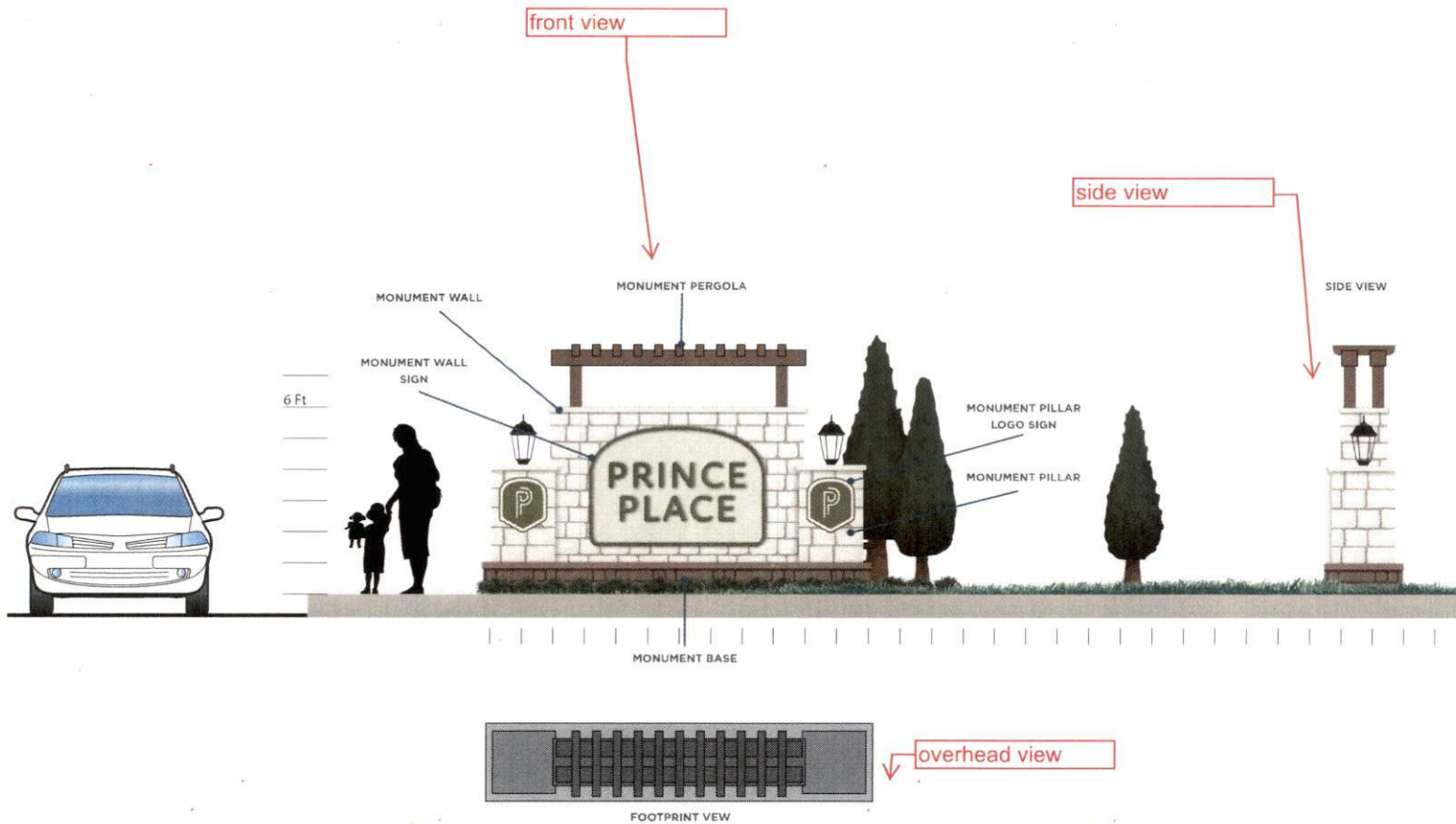
PRELIMINARY PLOT PLAN FOR:  
**PRINCE PLACE LLC**

HECTORS CREEK TWP., HARNETT CO., N.C.  
SCALE 1" = 40' JUNE 23, 2021

MAULDIN - WATKINS SURVEYING, P.A.  
P.O. BOX 444 / 139 N. MAIN ST.  
FUQUAY VARINA, NORTH CAROLINA 27526  
(919) 552-9326 C-929

4652SIGN

# Prince Place Monument



## MONUMENT

**NOTE: Design is conceptual and does not represent final engineered drawings. All final measurements and specifications subject to change based on vendor review.**

### Overall Dimensions (1 monument):

- 8' (H) x 12' (W) x 3' (D)

### Monument Pillar Dimensions:

- 3' (H) x 2' (W) x 2' (D)

### Monument Wall Dimensions:

- 5' (H) x 8' (W) x 1' (D)

### Monument Base Dimensions:

- 1' (H) x 12.375' (W) x 2.5' (D) (3" Inset)

### Monument Material:

- Manufactured Stone Veneer over reinforced cement block base
- Cordova Stone 1" Veneer by Echelon (8" Size)
- Wall & Pillars - Alabaster, chiseled face
- Base - Canyon Blend, chiseled face

### Monument Pillar Logo Sign:

- 1.75' (H) x 1.5' (W) Shield with Logo
- 2" High Density Urethane Resin
- CNC Routed for embossed logo and edge
- Painted to match

### Monument Wall Sign:

- 3.75' (H) x 5.5' (W) Arch with Lettering
- 2" High Density Urethane Resin
- CNC Routed for embossed logo and edge
- Painted to match

### Monument Finishing:

- 2" (H) x 8' (W) Wood Pergola Trim
- 4" x 4" and 3" x 3" Beams stained to match

### Monument Finishing:

- Cement caps tinted to match
- Hinkley Edgewater Black 20.5" High Outdoor Post Light (or similar)

### Suggested SW Paint Colors

- SW 6720 PARADISE (main)
- SW 7103 WHITETAIL (cream)
- SW 6118 LEATHER BOUND (Wood Stain)

stone selection

