

TRUIST

LOB

- Retail - Tier 3

Document Type

- Exterior Recommendation Book

Building Type

- Branch - Traditional

Property ID

- 100475

Property Name

- Dunn Erwin

Property Address

- 512 E Jackson Blvd, Erwin, NC 28339

Project Manager

- Renee Comer

Bi-Lingual

- No

Entry Control

- No

Drawn By

- Nick Mora

Date

- 03/03/2021

Revision

- B



Signature of (Owner/Lessor/Mortgage or Security Interest holder)

Print Name

Date

SITE PLAN

Key	Existing Sign	Recommended Sign
E01	Pylon Sign	PH72
E02	Letterset	LNILW18
E03	Letterset	LNILW15
E04	Directional	D4
E05	Directional	D4
E06	Directional	D4
E07	Directional	D4
E08	DOT	Leave as is
E09	Handicap Parking	Leave as is
E10	Lane Designators	Leave as is
E11	Clearance Sign	C2
E12	Clearance Sign	C2
E13	Clearance Sign	C1
E14	Branded 24hr Sign	LD1
E15	ATM Clearance Bar	Leave as is



SITE PLAN

Key	Existing Sign	Recommended Sign
E16	ATM (ABCD)	Topper-DT
E17	Small Black Bollards	BC436
E18	Large Black Bollards	BC460
E19	X-Large Black Bollards	BC660
E20	Door Glazing (ABCD)	V-1 Double, V-1c, V-7, V-10
E21	Drive-Thru Banners	Remove; leave units
E22		
E23		
E24		
E25		
E26		
E27		
E28		
E29		
E30		



COPYRIGHTS: The details shown on this drawing are confidential and are the exclusive property of Principle Group of Companies. No use, copy or disclosure of this disclosure of this drawing may be made without written permission and it is to be returned to Principle Group of Companies upon request.

 2035 Lakeside Centre Dr. Suite 250
 Knoxville, TN 37922
 T +865 692 4058 F +865 692 4104

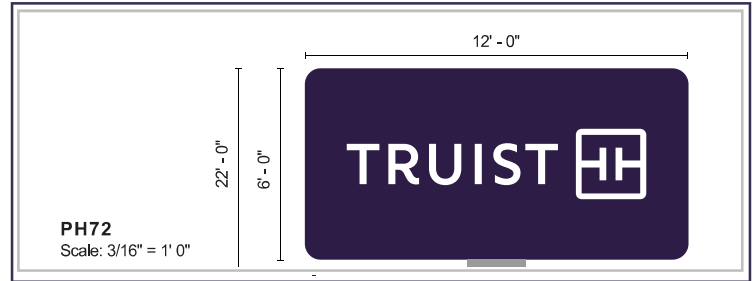


Site ID:	100475	Drawn By:	Nick Mora
Client:	TRUIST	Checked By:	JRG
Project:	Rebrand	Scale:	AS NOTED
Title:	512 E Jackson Blvd	Revision:	B
Date:	03/03/2021	Page:	6

LOCATION - E01
PROPOSED



Like for Like size swap of BB&T sign for Truist - To reuse existing steel and foundation



Action:	Remove and replace with new cabinet head
Sign Type:	PH72
Description:	Replace with new cabinet head onto existing cladding
Repair Action:	Check post cladding; paint Truist Mid-Gray
Signage Text:	Truist with monogram logo
Comments:	Repair post cladding as needed

EXISTING	Quantity:	1 D/S
----------	-----------	-------



Height:	6'-0"	Available Height:	6'-0"
Width:	12'-0"	Available Width:	12'-0"



COPYRIGHT© The details shown on this drawing are confidential and are the exclusive property of Principle Group of Companies. No use, copy or disclosure of this disclosure of this drawing may be made without written permission and it is to be returned to Principle Group of Companies upon request.
 2035 Lakeside Centre Dr. Suite 250
 Knoxville, TN 37922
 T +865 692 4058 F +865 692 4104



Site ID:	100475	Drawn By:	Nick Mora
Client:	TRUIST	Checked By:	JRG
Project:	Rebrand	Scale:	AS NOTED
Title:	512 E Jackson Blvd	Revision:	B
Date:	03/03/2021	Page:	7

DRAWING TITLE:

TRUIST PYLON
PH72
CABINET

REV	DATE	DESCRIPTION
△	-/-	-----
△	-/-	-----
△	-/-	-----
△	-/-	-----
△	-/-	-----
△	-/-	-----
△	-/-	-----

THE GRAPHICS SHOWN ON THIS DRAWING ARE FOR ILLUSTRATIVE PURPOSES ONLY! USE ONLY PROVIDED DIGITAL FILES FOR PRODUCTION.

principle

PRINCIPLE GROUP
2035 LAKESIDE CENTRE WAY - SUITE 250
KNOXVILLE, TN 37922

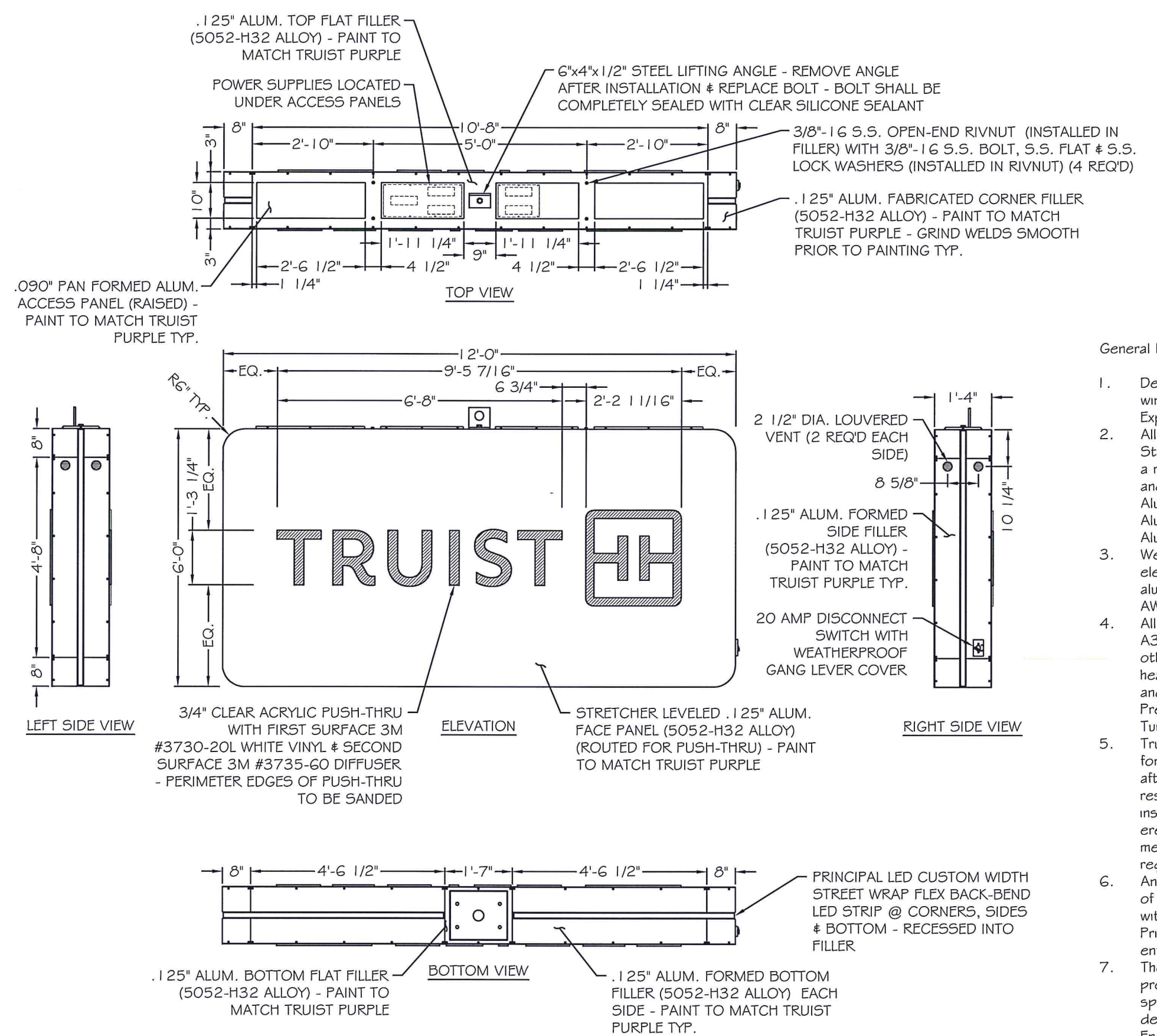
NOTICES:

COPYRIGHT © 2020 - The details shown on this drawing are confidential and are the exclusive property of Principle Group of Companies. No use, copy or disclosure of this drawing may be made without written permission and it is to be returned to Principle Group of Companies upon request.

No company or person(s) are to manufacture from the drawings without carrying out a full due diligence audit of them including (but not limited to) engineering, quality and compliance with applicable national and international standards and health and safety regulations, before using this information for the purposes of manufacture, or conveyance to others for the purposes of manufacture.

No liability is accepted in any form for the use of these drawings by others.

Material:		Finish:	
Project Number: 20-0431		Drawing Number: B2502448	
SHT. 1	OF 7	DATE: 10/23/20	BY: TR



REFER TO THE APPROVED SIGN FAMILY DOCUMENTS FOR PAINT COLOR & FINISH SPECIFICATIONS

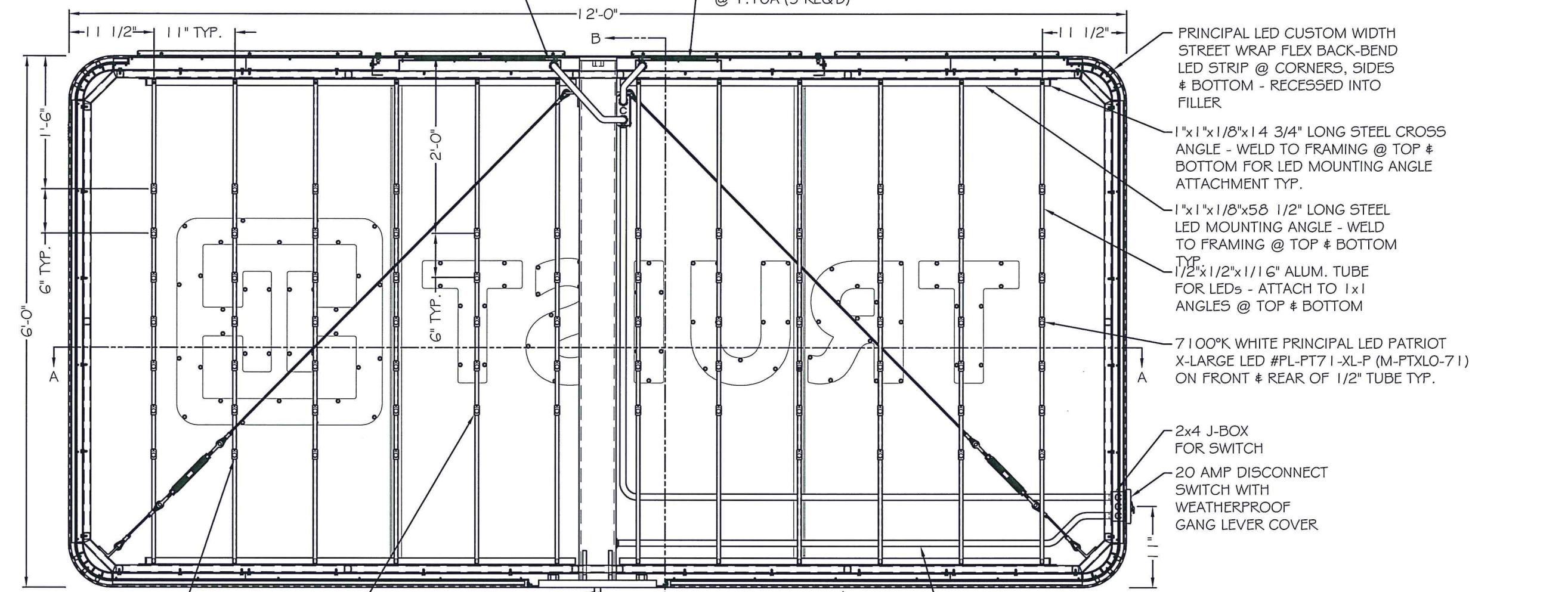
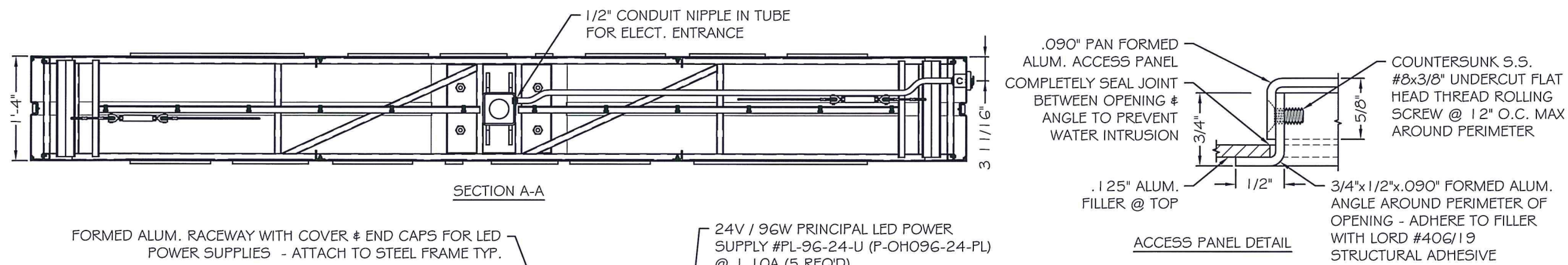
EXPOSED FASTENER HEADS SHALL BE FINISHED TO MATCH THE SURROUNDING MATERIAL

General Notes:

- Design is based on a 140 mph, 3 second gust wind design per IBC 2015. Category II, Exposure C.
- All support members shall be free from defects. Steel tube shall meet ASTM A500 Grade B with a minimum yield strength of 46000 psi. Steel angle, channel and plate shall meet ASTM A36. Aluminum shapes shall be 6061-T6 alloy. Aluminum sheet shall be 3003-H14 alloy. Aluminum plate shall be 5052-H34 alloy.
- Welds shall be made with E70xx low hydrogen electrodes for steel and with 5356 filler for aluminum by persons qualified in accordance with AWS standards within the past two years.
- All structural bolts shall conform to ASTM A325, and be zinc coated unless noted otherwise. When used with structural bolts, heavy hex nuts shall conform to ASTM A563, and washers shall conform to ASTM F436. Pretension all high strength bolts using the Turn-of-Nut method unless noted otherwise.
- Truist / Principle Group will not be responsible for the safety on this job site before, during or after installation of this structure. It is the responsibility of the owners, contractors and installers to ensure that the installation and erection of this structure is performed using methods that are in full compliance with OSHA regulations.
- Any deviation from this design or from any part of this drawing, including the General Notes, without prior written consent from Truist / Principle Group voids this drawing in its entirety.
- The structure designed on this drawing is prototypical should not be used for site specific applications unless reviewed and deemed suitable by a competent Professional Engineer.

DRAWING TITLE:

TRUIST PYLON
PH72
CABINET



ELECTRICAL REQUIREMENTS:

LED:	(152) 24V 7100°K WHITE PRINCIPAL LED PATRIOT X-LARGE #PL-PT71-XL-P (M-PTXLO-71) (22.46 LINEAR FEET) 7100°K WHITE CUSTOM WIDTH PRINCIPAL LED STREET WRAP FLEX BACK-BEND
POWER SUPPLY:	(5) 24V/96W PRINCIPAL #PL-96-24-U (P-OH096-24-PL) @ 1.10A EACH
TOTAL LOAD:	5.50A @ 120VAC
CIRCUITS:	(1) 20 AMP CIRCUIT REQUIRED

INTERIOR OF SIGN SHALL BE PRIMED & PAINTED WHITE

A COATING TYPE BARRIER SHALL BE APPLIED BETWEEN ALL DISSIMILAR METALS TO PREVENT GALVANIC REACTION

FINAL ELECTRICAL REQUIREMENTS FOR CUSTOM LED PRODUCT SHALL BE VERIFIED PRIOR TO PRODUCTION

REV	DATE	DESCRIPTION
△	-/-	-----
△	-/-	-----
△	-/-	-----
△	-/-	-----
△	-/-	-----
△	-/-	-----
△	-/-	-----
△	-/-	-----

THE GRAPHICS SHOWN ON THIS DRAWING ARE FOR ILLUSTRATIVE PURPOSES ONLY! USE ONLY PROVIDED DIGITAL FILES FOR PRODUCTION.

principle 

PRINCIPLE GROUP
2035 LAKESIDE CENTRE WAY - SUITE 250
KNOXVILLE, TN 37922

NOTICES:

COPYRIGHT © 2020 - The details shown on this drawing are confidential and are the exclusive property of Principle Group of Companies. No use, copy or disclosure of this drawing may be made without written permission and it is to be returned to Principle Group of Companies upon request.

No company or person(s) are to manufacture from the drawings without carrying out a full due diligence audit of them including (but not limited to) engineering, quality and compliance with applicable national and international standards and health and safety regulations, before using this information for the purposes of manufacture, or conveyance to others for the purposes of manufacture.

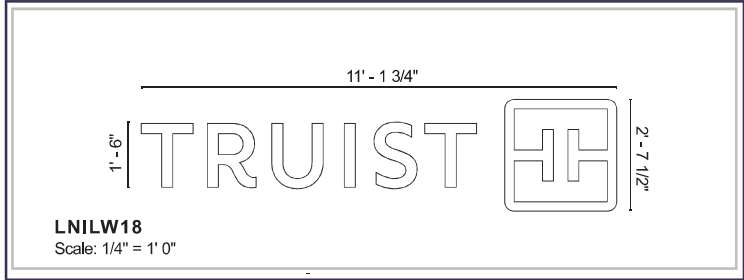
No liability is accepted in any form for the use of these drawings by others.

Material:		Finish:	
Project Number: 20-0431		Drawing Number: B2502448	
SHT. 2	OF 7	DATE: 10/23/20	BY: TR

SOUTH ELEVATION

LOCATION - E02
PROPOSED

E Jackson Blvd Wall Elevation - 79' 5" OAW



Action:	Remove and replace letterset
Sign Type:	LNILW18
Description:	Non-Illuminated - Linear - White Face - Flush Mount
Repair Action:	PPR wall to like new condition
Signage Text:	Truist with monogram logo
Comments:	NA

EXISTING	Quantity:	1
-----------------	-----------	---



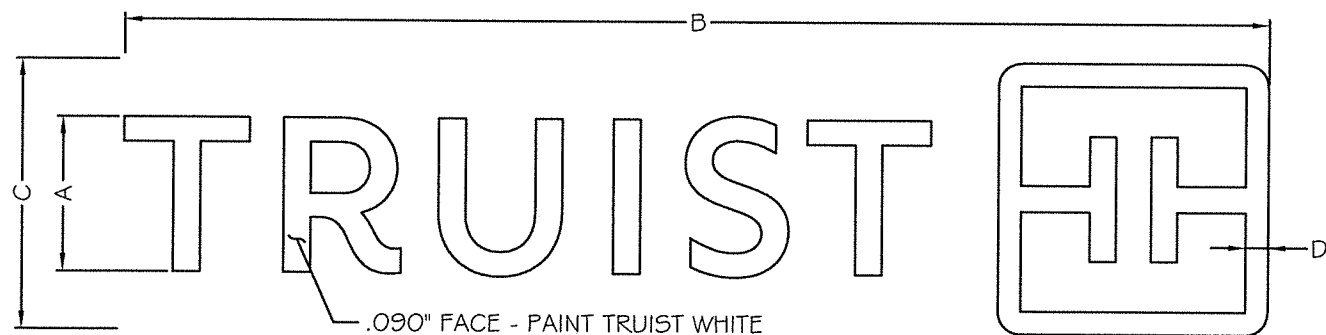
Height:	2'-6"	Available Height:	5'-0"
Width:	7'-11"	Available Width:	22'-6"

COPYRIGHT© The details shown on this drawing are confidential and are the exclusive property of Principle Group of Companies. No use, copy or disclosure of this disclosure of this drawing may be made without written permission and it is to be returned to Principle Group of Companies upon request.

2035 Lakeside Centre Dr. Suite 250
 Knoxville, TN 37922
T +865 692 4058 **F** +865 692 4104



Site ID:	100475	Drawn By:	Nick Mora
Client:	TRUIST	Checked By:	JRG
Project:	Rebrand	Scale:	AS NOTED
Title:	512 E Jackson Blvd	Revision:	B
Date:	03/03/2021	Page:	8



ELEVATION

LNILW18

1'-6"

11'-1 ³/₄"

2'-7 ¹/₂"

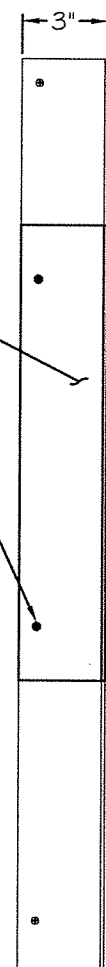
2 ⁵/₈"

ALL COLORS & FINISHES SHALL BE VERIFIED TO MATCH THE APPROVED STANDARD FOR THEIR RESPECTIVE BRAND PRIOR TO PRODUCTION

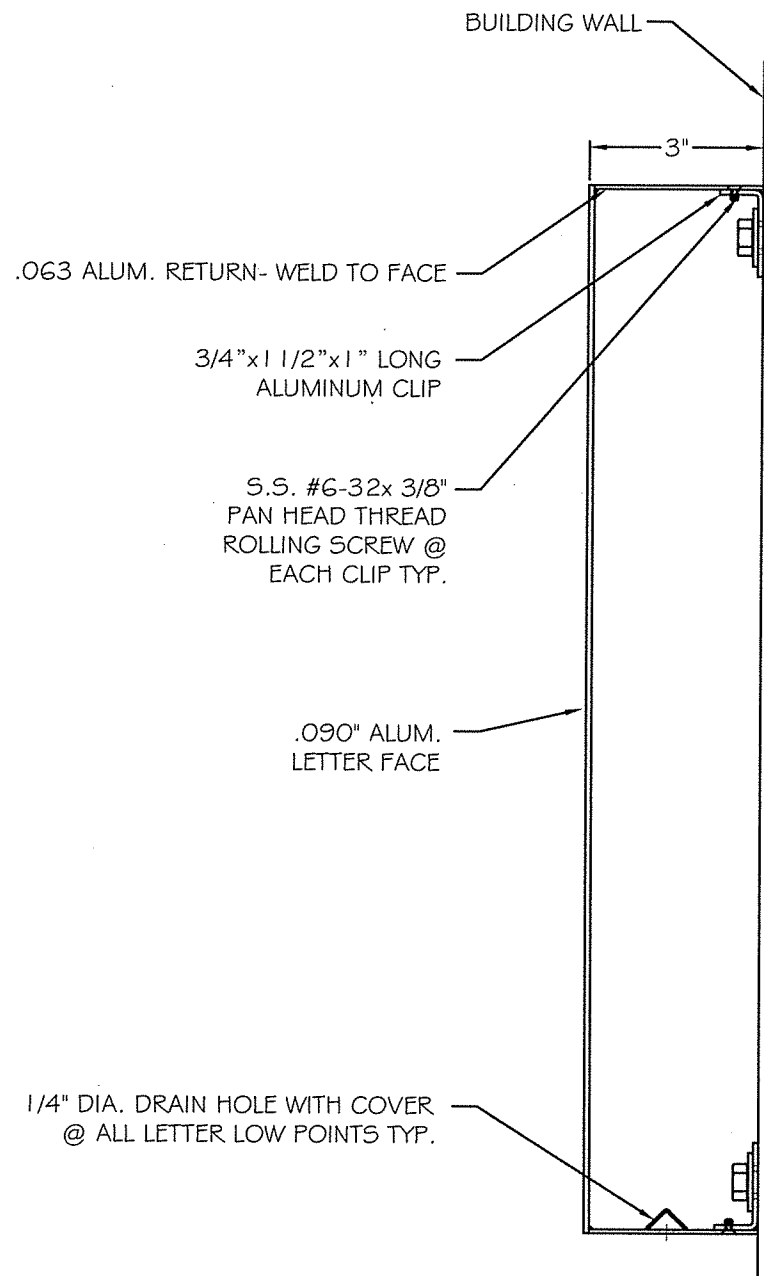
EXPOSED FASTENER HEADS SHALL BE FINISHED TO MATCH THE SURROUNDING MATERIAL

General Notes:

- Design is based on a 115 mph, 3 second gust wind design per IBC 2015. Category II, Exposure C. Components and Cladding, Zone 5.
- No additional wind catching surfaces are added to the building structure. The customer's building engineer is to determine the adequacy of the supporting structure.
- All support members shall be free from defects. Extruded aluminum shapes shall be 6061-T6 alloy. Aluminum sheet shall be 3003-H14 alloy. Aluminum plate shall be 5052-H34 alloy.
- Welds shall be made using 5356 filler for aluminum by persons qualified in accordance with AWS standards within the past two years.
- All fasteners shall be stainless steel or otherwise coated to prevent corrosion.
- All wall penetrations shall be sealed to prevent water intrusion.
- Truist / Principle Group will not be responsible for the safety on this job site before, during or after installation of this structure. It is the responsibility of the owners, contractors and installers to ensure that the installation and erection of this structure is performed using methods that are in full compliance with OSHA regulations.
- Any deviation from this design or from any part of this drawing, including the General Notes, without prior written consent from Truist / Principle Group voids this drawing in its entirety.
- This design is prototypical and should not be used for site specific applications unless reviewed and deemed suitable by a competent Professional Engineer.



SIDE VIEW OF LETTER SET



TYPICAL SECTION THROUGH LETTER

TRUIST

DRAWING TITLE:

TRUIST LETTERSET
 WHITE FACE - NON-ILLUMINATED
 LNILW12
 LNILW15
 LNILW18
 LNILW24

REV	DATE	DESCRIPTION
△	-/-	-----
△	-/-	-----
△	-/-	-----
△	-/-	-----
△	-/-	-----
△	-/-	-----
△	-/-	-----
△	-/-	-----
△	-/-	-----

THE GRAPHICS SHOWN ON THIS DRAWING ARE FOR ILLUSTRATIVE PURPOSES ONLY! USE ONLY PROVIDED DIGITAL FILES FOR PRODUCTION.

principle

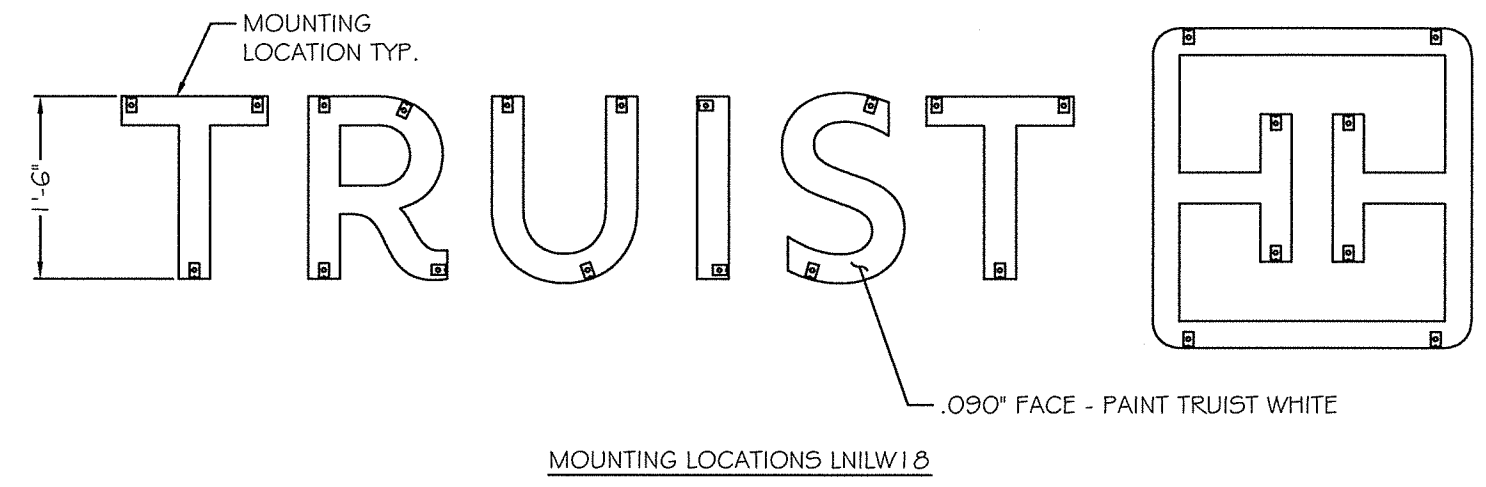
PRINCIPLE GROUP
 2035 LAKESIDE CENTRE WAY - SUITE 250
 KNOXVILLE, TN 37922

NOTICES:
 COPYRIGHT © 2020 - The details shown on this drawing are confidential and are the exclusive property of Principle Group of Companies. No use, copy or disclosure of this drawing may be made without written permission and it is to be returned to Principle Group of Companies upon request.
 No company or person(s) are to manufacture from the drawings without carrying out a full due diligence audit of them including (but not limited to) engineering, quality and compliance with applicable national and international standards and health and safety regulations, before using this information for the purposes of manufacture, or conveyance to others for the purposes of manufacture.
 No liability is accepted in any form for the use of these drawings by others.

Material:		Finish:	
Project Number: 20-0431		Drawing Number: B2502476	
SHT. 1	OF 4	DATE: 12/15/20	BY: DH

DRAWING TITLE:

TRUIST LETTERSET
 WHITE FACE - NON-ILLUMINATED
 LNILW12
 LNILW15
 LNILW18
 LNILW24



MOUNTING LOCATIONS LNILW18

REV	DATE	DESCRIPTION
△	-/-	-----
△	-/-	-----
△	-/-	-----
△	-/-	-----
△	-/-	-----
△	-/-	-----
△	-/-	-----
△	-/-	-----
△	-/-	-----

THE GRAPHICS SHOWN ON THIS DRAWING ARE FOR ILLUSTRATIVE PURPOSES ONLY! USE ONLY PROVIDED DIGITAL FILES FOR PRODUCTION.



PRINCIPLE GROUP
 2035 LAKESIDE CENTRE WAY - SUITE 250
 KNOXVILLE, TN 37922

NOTICES:

COPYRIGHT © 2020 – The details shown on this drawing are confidential and are the exclusive property of Principle Group of Companies. No use, copy or disclosure of this drawing may be made without written permission and it is to be returned to Principle Group of Companies upon request.

No company or person(s) are to manufacture from the drawings without carrying out a full due diligence audit of them including (but not limited to) engineering, quality and compliance with applicable national and international standards and health and safety regulations, before using this information for the purposes of manufacture, or conveyance to others for the purposes of manufacture.

No liability is accepted in or form for the use of these drawings by others.

Material:		Finish:	
Project Number: 20-0431		Drawing Number: B2502476	
SHT. 3	OF 4	DATE: 12/15/20	BY: DH

DRAWING TITLE:

TRUIST LETTERSET
 WHITE FACE - NON-ILLUMINATED
 LN1LW12
 LN1LW15
 LN1LW18
 LN1LW24

REV	DATE	DESCRIPTION
△	-/-	-----
△	-/-	-----
△	-/-	-----
△	-/-	-----
△	-/-	-----
△	-/-	-----
△	-/-	-----
△	-/-	-----

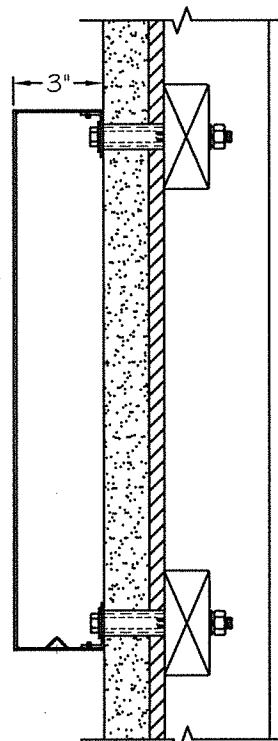
THE GRAPHICS SHOWN ON THIS DRAWING ARE FOR ILLUSTRATIVE PURPOSES ONLY! USE ONLY PROVIDED DIGITAL FILES FOR PRODUCTION.

principle 

PRINCIPLE GROUP
 2035 LAKESIDE CENTRE WAY - SUITE 250
 KNOXVILLE, TN 37922

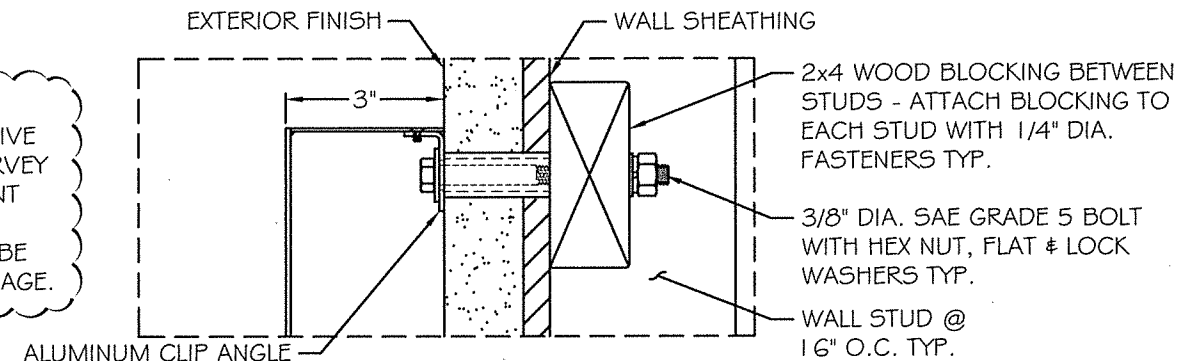
NOTICES:
 COPYRIGHT © 2020 - The details shown on this drawing are confidential and are the exclusive property of Principle Group of Companies. No use, copy or disclosure of this drawing may be made without written permission and it is to be returned to Principle Group of Companies upon request.
 No company or person(s) are to manufacture from the drawings without carrying out a full due diligence audit of them including (but not limited to) engineering, quality and compliance with applicable national and international standards and health and safety regulations, before using this information for the purposes of manufacture, or conveyance to others for the purposes of manufacture.
 No liability is accepted in any form for the use of these drawings by others.

Material:		Finish:	
Project Number: 20-0431		Drawing Number: B2502476	
SHT. 4	OF 4	DATE: 12/15/20	BY: DH

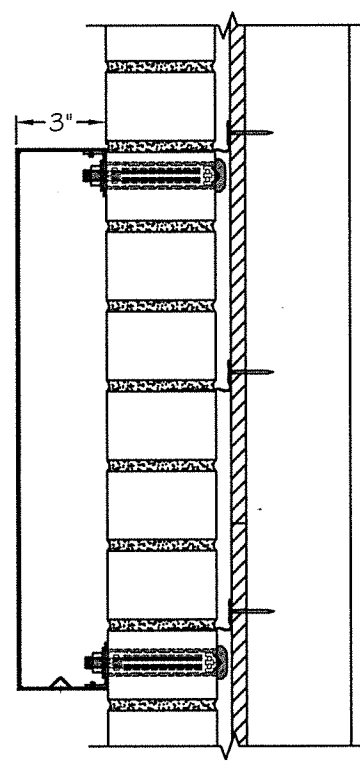


EXAMPLE INSTALLATION SECTION @ FRAMED WALL

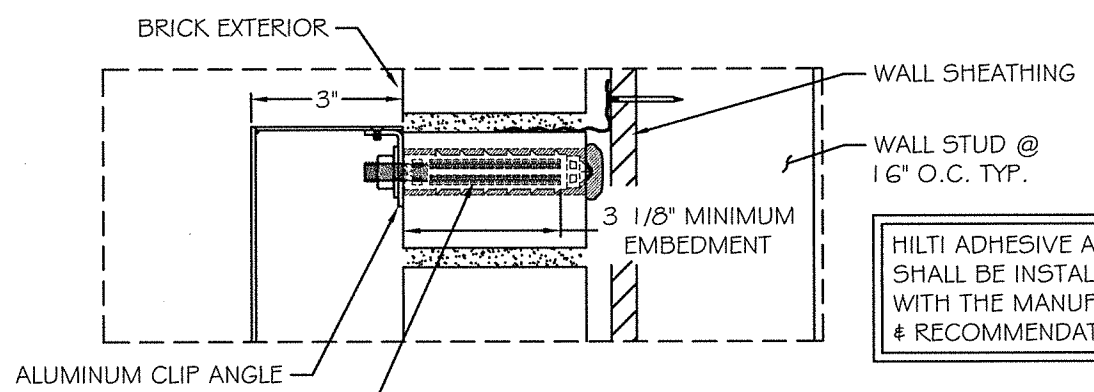
THE INSTALLATION DETAILS SHOWN ON THIS SHEET ARE FOR ILLUSTRATIVE PURPOSES ONLY. A TECHNICAL SURVEY OF THE BUILDING & THE ATTACHMENT DESIGN BY A COMPETENT PROFESSIONAL ENGINEER SHOULD BE CONDUCTED FOR SITE SPECIFIC USAGE.



EXAMPLE INSTALLATION DETAIL @ FRAMED WALL



EXAMPLE INSTALLATION SECTION @ BRICK WALL



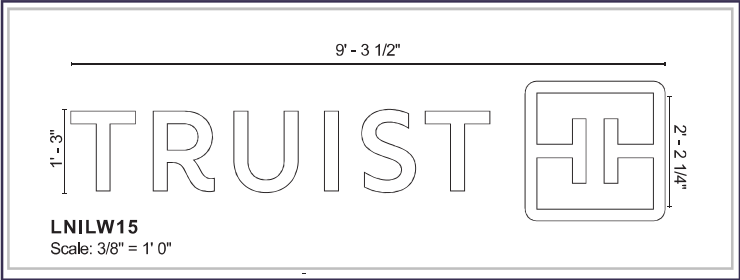
3/8" DIA. HILTI HAS THREADED ROD EMBEDDED A MINIMUM OF 3 1/8" INTO HILTI HIT-HY 270 ADHESIVE USING HILTI HIT-SC 16x85 SCREEN TUBE (OR EQUAL) TYP.

HILTI ADHESIVE ANCHOR SYSTEM (OR EQUAL) SHALL BE INSTALLED IN STRICT ACCORDANCE WITH THE MANUFACTURER'S SPECIFICATIONS & RECOMMENDATIONS

EXAMPLE INSTALLATION DETAIL @ BRICK WALL

EAST ELEVATION
 LOCATION - E03
 PROPOSED

Right Wall Elevation - 49' 3" OAW



Action:	Remove and replace letterset
Sign Type:	LNILW15
Description:	Non-Illuminated - Linear - White Face - Flush Mount
Repair Action:	PPR wall to like new condition
Signage Text:	Truist with monogram logo
Comments:	NA

EXISTING	Quantity:	1
----------	-----------	---



Height:	2'-6"	Available Height:	5'-0"
Width:	7'-11"	Available Width:	10'-6"

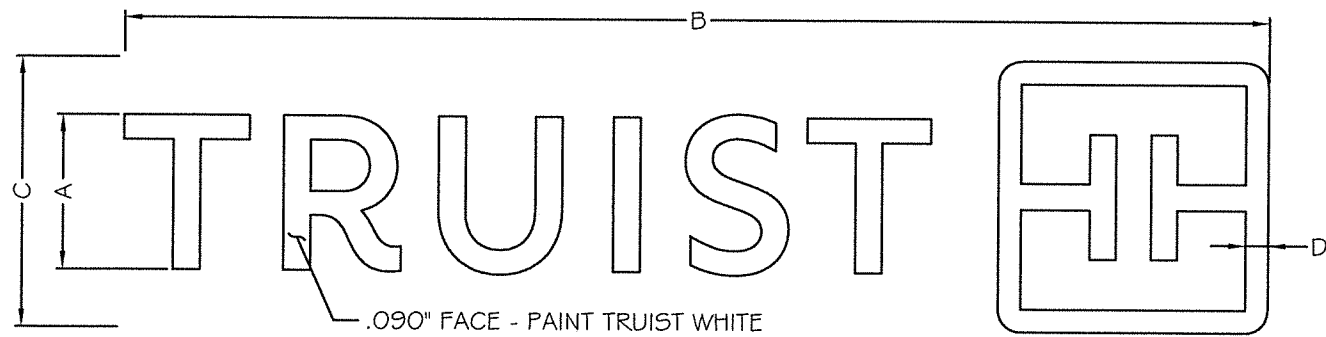


 COPYRIGHT© The details shown on this drawing are confidential and are the exclusive property of Principle Group of Companies. No use, copy or disclosure of this disclosure of this drawing may be made without written permission and it is to be returned to Principle Group of Companies upon request.

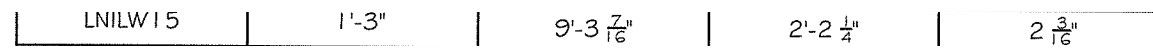
2035 Lakeside Centre Dr. Suite 250
 Knoxville, TN 37922
 T +865 692 4058 F +865 692 4104



Site ID:	100475	Drawn By:	Nick Mora
Client:	TRUIST	Checked By:	JRG
Project:	Rebrand	Scale:	AS NOTED
Title:	512 E Jackson Blvd	Revision:	B
Date:	03/03/2021	Page:	9



ELEVATION

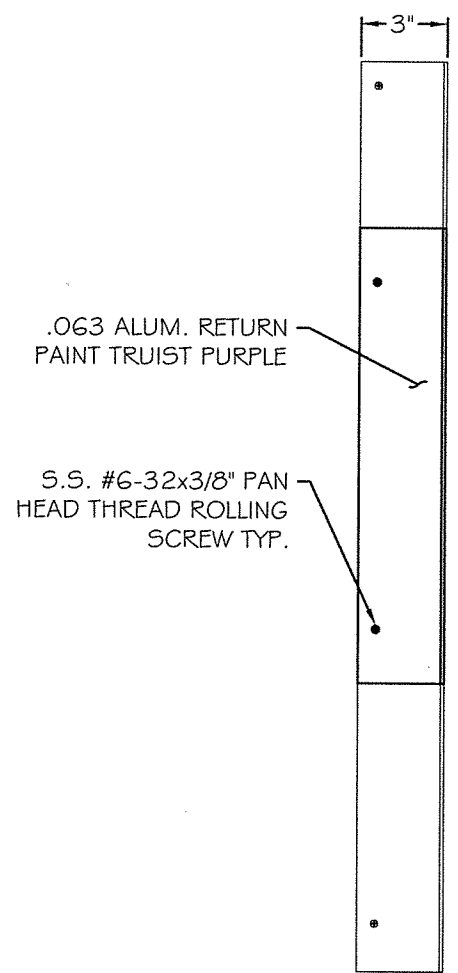


ALL COLORS & FINISHES SHALL BE VERIFIED TO MATCH THE APPROVED STANDARD FOR THEIR RESPECTIVE BRAND PRIOR TO PRODUCTION

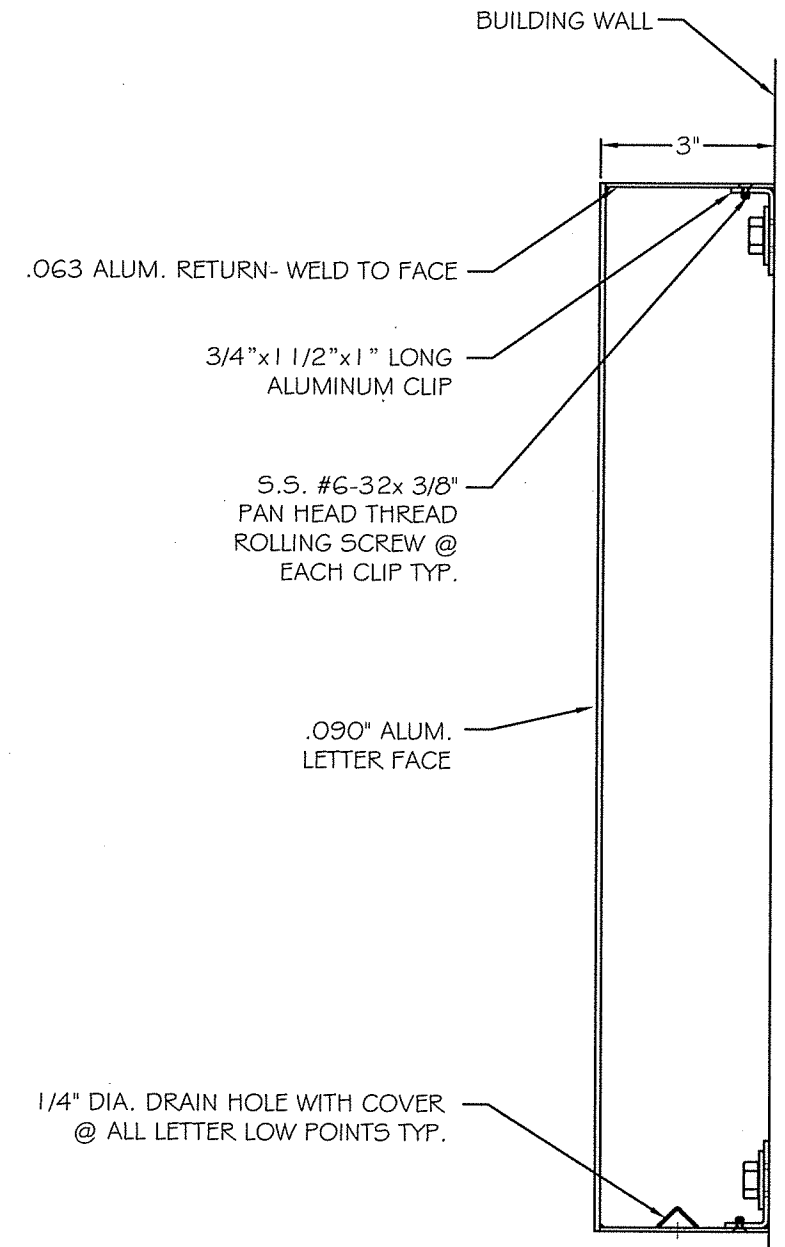
EXPOSED FASTENER HEADS SHALL BE FINISHED TO MATCH THE SURROUNDING MATERIAL

General Notes:

- Design is based on a 115 mph, 3 second gust wind design per IBC 2015. Category II, Exposure C. Components and Cladding, Zone 5.
- No additional wind catching surfaces are added to the building structure. The customer's building engineer is to determine the adequacy of the supporting structure.
- All support members shall be free from defects. Extruded aluminum shapes shall be 6061-T6 alloy. Aluminum sheet shall be 3003-H14 alloy. Aluminum plate shall be 5052-H34 alloy.
- Welds shall be made using 5356 filler for aluminum by persons qualified in accordance with AWS standards within the past two years.
- All fasteners shall be stainless steel or otherwise coated to prevent corrosion.
- All wall penetrations shall be sealed to prevent water intrusion.
- Truist / Principle Group will not be responsible for the safety on this job site before, during or after installation of this structure. It is the responsibility of the owners, contractors and installers to ensure that the installation and erection of this structure is performed using methods that are in full compliance with OSHA regulations.
- Any deviation from this design or from any part of this drawing, including the General Notes, without prior written consent from Truist / Principle Group voids this drawing in its entirety.
- This design is prototypical and should not be used for site specific applications unless reviewed and deemed suitable by a competent Professional Engineer.



SIDE VIEW OF LETTER SET



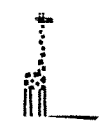
TYPICAL SECTION THROUGH LETTER

TRUIST 

DRAWING TITLE:
TRUIST LETTERSET
WHITE FACE - NON-ILLUMINATED
LN1LW12
LN1LW15
LN1LW18
LN1LW24

REV	DATE	DESCRIPTION
△	-/-	-----
△	-/-	-----
△	-/-	-----
△	-/-	-----
△	-/-	-----
△	-/-	-----
△	-/-	-----
△	-/-	-----
△	-/-	-----

THE GRAPHICS SHOWN ON THIS DRAWING ARE FOR ILLUSTRATIVE PURPOSES ONLY! USE ONLY PROVIDED DIGITAL FILES FOR PRODUCTION.

principle 
PRINCIPLE GROUP
2035 LAKESIDE CENTRE WAY - SUITE 250
KNOXVILLE, TN 37922

NOTICES:
COPYRIGHT © 2020 - The details shown on this drawing are confidential and are the exclusive property of Principle Group of Companies. No use, copy or disclosure of this drawing may be made without written permission and it is to be returned to Principle Group of Companies upon request.
No company or person(s) are to manufacture from the drawings without carrying out a full due diligence audit of them including (but not limited to) engineering, quality and compliance with applicable national and international standards and health and safety regulations, before using this information for the purposes of manufacture, or conveyance to others for the purposes of manufacture.
No liability is accepted in any form for the use of these drawings by others.

Material:		Finish:	
Project Number: 20-0431		Drawing Number: B2502476	
SHT. 1	OF 4	DATE: 12/15/20	BY: DH

DRAWING TITLE:

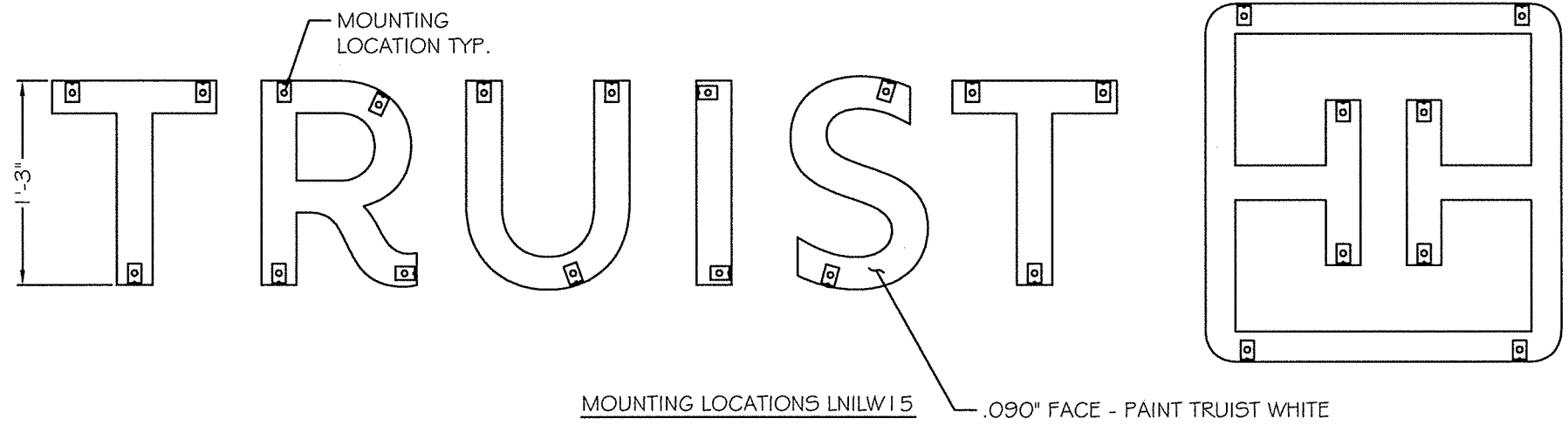
TRUIST LETTERSET
 WHITE FACE - NON-ILLUMINATED
 LNILW12
 LNILW15
 LNILW18
 LNILW24

REV	DATE	DESCRIPTION
△	--	-----
△	--	-----
△	--	-----
△	--	-----
△	--	-----
△	--	-----
△	--	-----
△	--	-----
△	--	-----

THE GRAPHICS SHOWN ON THIS DRAWING ARE FOR ILLUSTRATIVE PURPOSES ONLY! USE ONLY PROVIDED DIGITAL FILES FOR PRODUCTION.

principle 
 PRINCIPLE GROUP
 2035 LAKESIDE CENTRE WAY - SUITE 250
 KNOXVILLE, TN 37922

NOTICES:
 COPYRIGHT © 2020 - The details shown on this drawing are confidential and are the exclusive property of Principle Group of Companies. No use, copy or disclosure of this drawing may be made without written permission and it is to be returned to Principle Group of Companies upon request.
 No company or person(s) are to manufacture from the drawings without carrying out a full due diligence audit of them including (but not limited to) engineering, quality and compliance with applicable national and international standards and health and safety regulations, before using this information for the purposes of manufacture, or conveyance to others for the purposes of manufacture.
 No liability is accepted in any form for the use of these drawings by others.



Material:		Finish:	
Project Number: 20-0431		Drawing Number: B2502476	
SHT. 2	OF 4	DATE: 12/15/20	BY: DH

DRAWING TITLE:

TRUIST LETTERSET
 WHITE FACE - NON-ILLUMINATED
 LN1LW12
 LN1LW15
 LN1LW18
 LN1LW24

REV	DATE	DESCRIPTION
△	-/-	-----
△	-/-	-----
△	-/-	-----
△	-/-	-----
△	-/-	-----
△	-/-	-----
△	-/-	-----
△	-/-	-----

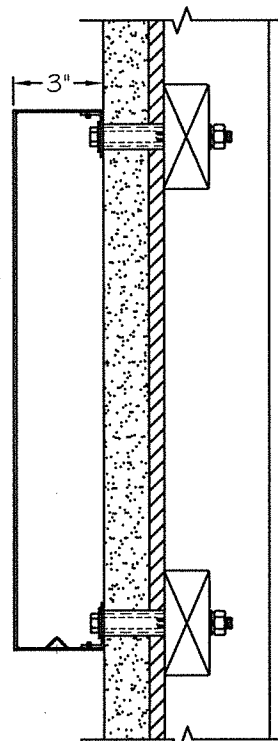
THE GRAPHICS SHOWN ON THIS DRAWING ARE FOR ILLUSTRATIVE PURPOSES ONLY! USE ONLY PROVIDED DIGITAL FILES FOR PRODUCTION.

principle 

PRINCIPLE GROUP
 2035 LAKESIDE CENTRE WAY - SUITE 250
 KNOXVILLE, TN 37922

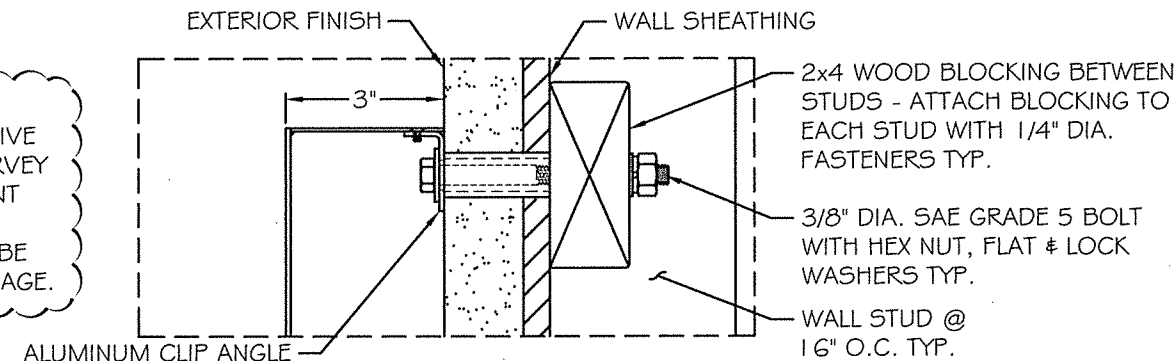
NOTICES:
 COPYRIGHT © 2020 - The details shown on this drawing are confidential and are the exclusive property of Principle Group of Companies. No use, copy or disclosure of this drawing may be made without written permission and it is to be returned to Principle Group of Companies upon request.
 No company or person(s) are to manufacture from the drawings without carrying out a full due diligence audit of them including (but not limited to) engineering, quality and compliance with applicable national and international standards and health and safety regulations, before using this information for the purposes of manufacture, or conveyance to others for the purposes of manufacture.
 No liability is accepted in any form for the use of these drawings by others.

Material:		Finish:	
Project Number: 20-0431		Drawing Number: B2502476	
SHT. 4	OF 4	DATE: 12/15/20	BY: DH

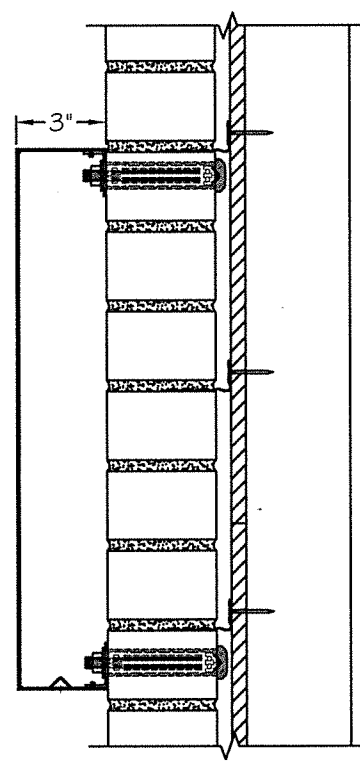


EXAMPLE INSTALLATION SECTION @ FRAMED WALL

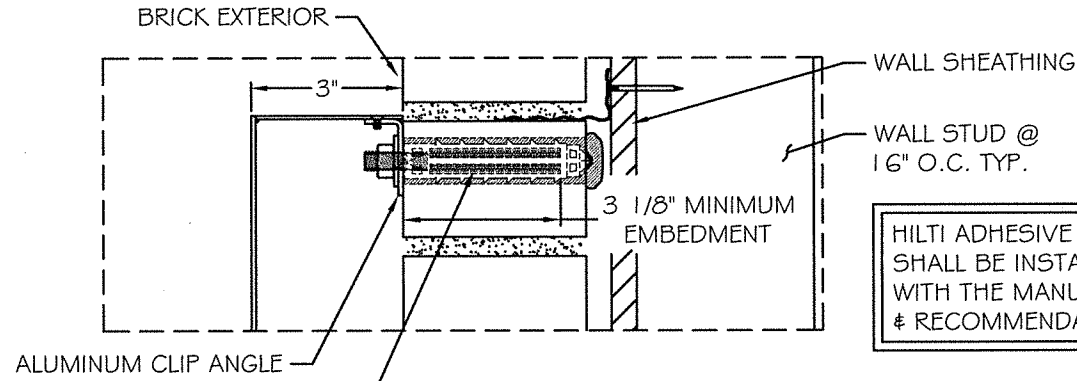
THE INSTALLATION DETAILS SHOWN ON THIS SHEET ARE FOR ILLUSTRATIVE PURPOSES ONLY. A TECHNICAL SURVEY OF THE BUILDING & THE ATTACHMENT DESIGN BY A COMPETENT PROFESSIONAL ENGINEER SHOULD BE CONDUCTED FOR SITE SPECIFIC USAGE.



EXAMPLE INSTALLATION DETAIL @ FRAMED WALL



EXAMPLE INSTALLATION SECTION @ BRICK WALL



EXAMPLE INSTALLATION DETAIL @ BRICK WALL

3/8" DIA. HILTI HAS THREADED ROD EMBEDDED A MINIMUM OF 3 1/8" INTO HILTI HIT-HY 270 ADHESIVE USING HILTI HIT-SC 16x85 SCREEN TUBE (OR EQUAL) TYP.

HILTI ADHESIVE ANCHOR SYSTEM (OR EQUAL) SHALL BE INSTALLED IN STRICT ACCORDANCE WITH THE MANUFACTURER'S SPECIFICATIONS & RECOMMENDATIONS