

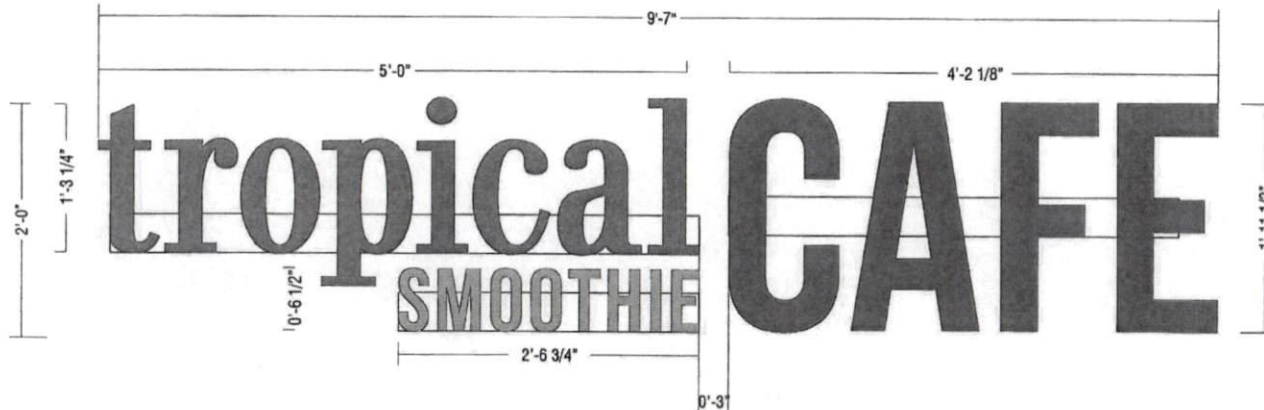
# tropical SMOOTHIE CAFE



**1546 NC HWY 24/87  
CAMERON, NC 23826**

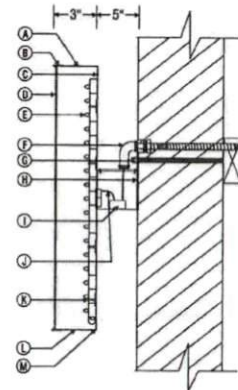
24" INTERNALLY ILLUMINATED RACEWAY MOUNT CHANNEL LETTERS - 19.23 SQ FT

tropical **CAFE**  
SMOOTHIE



**L.E.D. RACEWAY MOUNTING DETAIL (EXTERIOR)**

- A. .050" X 3" ALUMINUM RETURNS TO BE PAINTED GLOSS BLACK
- B. 1" GLOSS BLACK JEWELITE
- C. .063" ALUMINUM BACKS
- D. WHITE LD PCB FACES  
W/ 3M TROPICAL GREEN 3630-3176 20635  
W/ 3M 3630-25 SUNFLOWER  
W/ 3M CAFÉ ORANGE 3630-4987 20634
- E. WHITE GE TETRA MAX 7100K 24V LEDS  
9 YEAR WARRANTY ON LED'S
- F. 1/2" SEALTITE CONDUIT RUNNING TO SECONDARY CONNECTION  
\* NOTE: GENERAL CONTRACTOR TO HAVE PRIMARY CONNECTION HOOKED UP
- G. 3/8" THREADED RODS WITH 2" x 4" WOOD BLOCKING AS REQUIRED TO MOUNT RACEWAY TO WALL
- H. 2" x 9" x 3/16" ALUMINUM MOUNTING BRACKETS AS REQ'D - CENTER TO CENTER DIMENSIONS NOT TO EXCEED 6'-0" OF UNBRACED LENGTHS
- I. STANDARD POWER SUPPLY HOUSED IN A 4" x 5" RACEWAY PAINTED (TBD)
- J. POWER CABLE STARTING FROM POWER SUPPLY THEN LETTER TO LETTER
- K. PLASTIC MOUNTING CLIPS AS REQ'D
- L. 1/4" WEEP HOLES AS REQUIRED
- M. SILICONE BEAD AROUND THE INSIDE OF RETURN AND BACK TO SEAL FROM WATER LEAKAGE



TYPICAL WALL SECTION:  
NOT TO SCALE



**ENTERA**

Your total branding solution

5900 VENTURE CROSSINGS BLVD  
PANAMA CITY, FL 32409

PH: 850-763-7982

FAX: 850-392-0873

www.enterabrading.com

THIS DOCUMENT CONTAINS PROPRIETARY AND CONFIDENTIAL INFORMATION OF ENTERA, LLC AND SHALL NOT BE USED, DISCLOSED OR REPRODUCED, IN WHOLE OR IN PART, FOR ANY PURPOSE OTHER THAN TO EVALUATE THIS DOCUMENT, WITHOUT THE PRIOR WRITTEN CONSENT OF ENTERA, LLC. TITLE IN AND TO THIS DOCUMENT AND ALL INFORMATION CONTAINED HEREIN REMAINS AT ALL TIMES PROPERTY OF ENTERA, LLC.

**COLOR NOTES:**

- 3M PEA GREEN VINYL  
VINYL # 3630-4987
- 3M SUNFLOWER VINYL  
VINYL # 3630-25
- 3M ORANGE VINYL  
VINYL # 3630-3176
- 3M GRAY VINYL  
VINYL #  
PANTONE 425C

**REVISION:**

1	XXXXX
2	XXXXX
3	XXXXX
4	XXXXX

ARTIST

JU

CLIENT:

TROPICAL SMOOTHIE

SCALE:

1/4" = 1'

DATE:

4.7.2020

LOCATION

CAMERON, NC



Underwriters  
Laboratories, Inc.  
LISTED

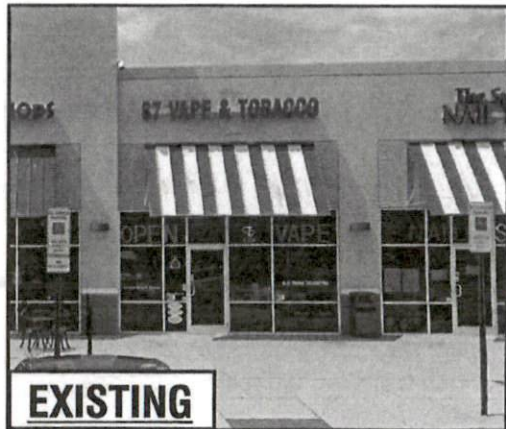


FRONT ELEVATION W/ PROPOSED SIGNAGE - 19.23 SQ FT

tropical SMOOTHIE CAFE



**PROPOSED**



**EXISTING**



**ENTERA**

Your total branding solution

5900 VENTURE CROSSINGS BLVD

PANAMA CITY, FL 32409

PH: 850-763-7982

FAX: 850-392-0673

www.enterabranding.com

THIS DOCUMENT CONTAINS PROPRIETARY AND CONFIDENTIAL INFORMATION OF ENTERA, LLC AND SHALL NOT BE USED, DISCLOSED OR REPRODUCED, IN WHOLE OR IN PART, FOR ANY PURPOSE OTHER THAN TO EVALUATE THIS DOCUMENT, WITHOUT THE PRIOR WRITTEN CONSENT OF ENTERA, LLC. TITLE IN AND TO THIS DOCUMENT AND ALL INFORMATION CONTAINED HEREIN REMAINS AT ALL TIMES PROPERTY OF ENTERA, LLC.

COLOR NOTES:

-  3M PEA GREEN VINYL  
VINYL # 3838-4987
-  3M SUNFLOWER VINYL  
VINYL # 3838-23
-  3M ORANGE VINYL  
VINYL # 3838-3178
-  3M GRAY VINYL  
VINYL # PANTONE 425C

REVISION:

1	XXXXX
2	XXXXX
3	XXXXX
4	XXXXX

ARTIST

JU

CLIENT:

TROPICAL SMOOTHIE

SCALE:

1/4" = 1'

DATE:

4.7.2020

LOCATION

CAMERON, NC



Underwriters  
Laboratories, Inc.  
LISTED

