



stewart signs

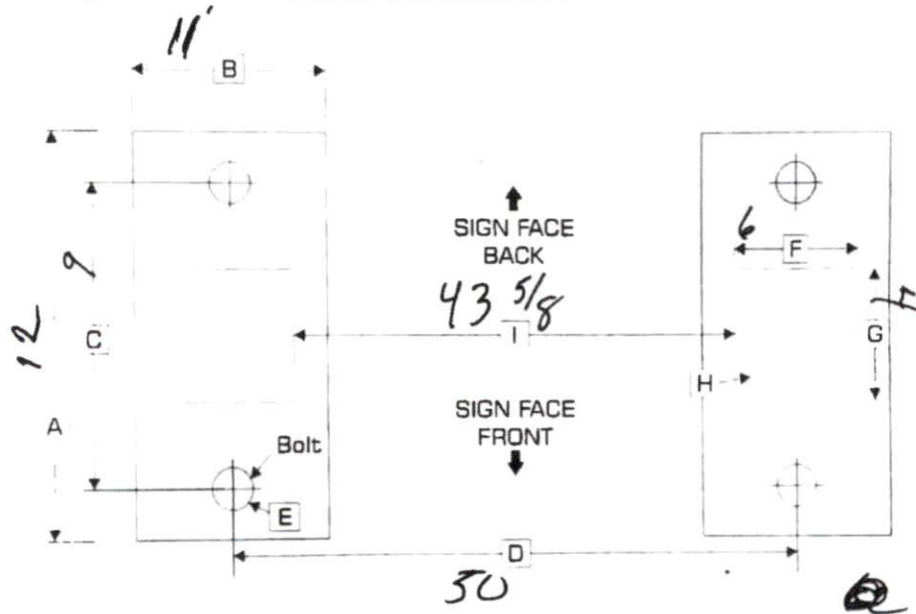
America's Premier Sign Company

Existing Sign and Anchor Bolt Survey Form

Please provide the following measurements to ensure your new sign will match up to pre-existing anchor bolts.

Enter N/A if dimensions are unavailable or don't apply to your situation.

Please provide measurements to the nearest 1/8".



Baseplate Size

Dimension A: 12

Dimension B: 11

Anchor Bolt Location

Dimension C: 9

Dimension D: 50

Anchor Bolt Diameter

Dimension E: NA

Pre-Existing Sign Leg Size (if square/rectangle)

Dimension F: 6

Dimension G: 4

Pre-Existing Sign Leg Diameter (if round)

Dimension H: NA SQUARE

Distance between Pre-Existing Sign Legs

Dimension I: 43 5/8

Customer Signature: Bobby J. McDuffie

Date: 12-10-19

Customer Name: Bobby McDuffie

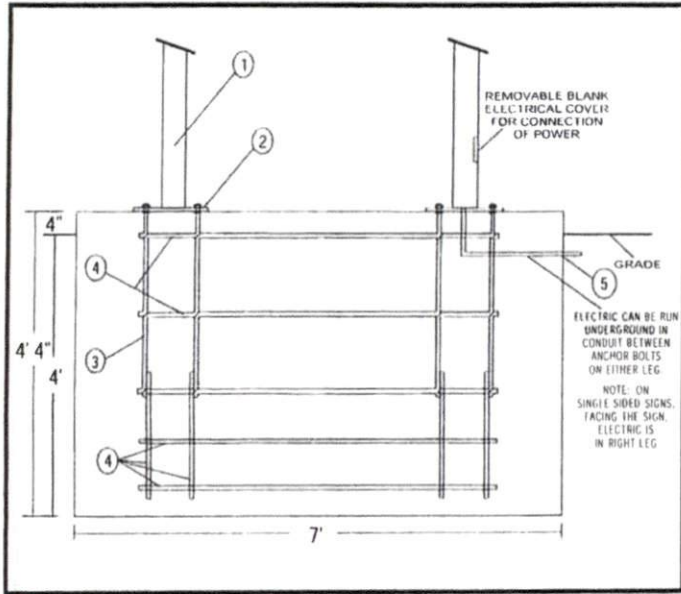
Customer #: 1079197

2201 Cantu Court Suite 215 Sarasota, FL 34232
(941) 378-4242 (800) 237-3928 Fax (800) 485-4280

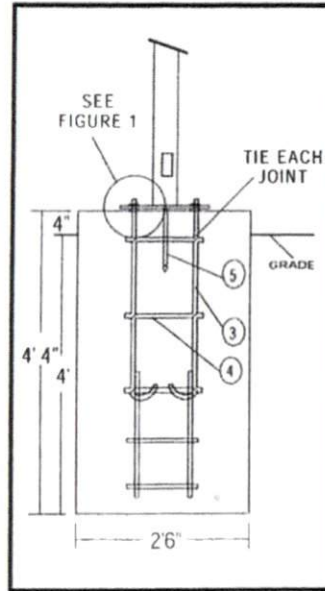
www.stewartsigns.com

2ABBP-1

FOOTING DETAIL: NORMAL HEIGHT



FRONT VIEW
Scale: 1/2" = 1'



SIDE VIEW
Scale: 1/2" = 1'

FOOTING DETAIL FOR THE FOLLOWING J.M. STEWART SIGN MODELS:

WITNESS, MASCOT, NARRATOR, SENTINEL - SUPRA - 120 MPH
WITNESS, MASCOT, NARRATOR, SENTINEL - SUPRA - 150 MPH
HERALD SUPRA - 120 MPH

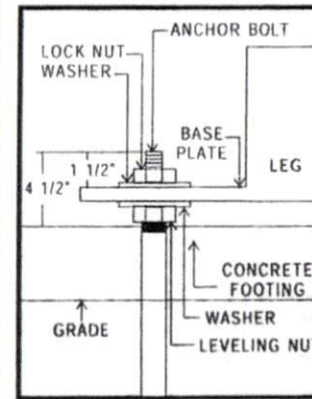
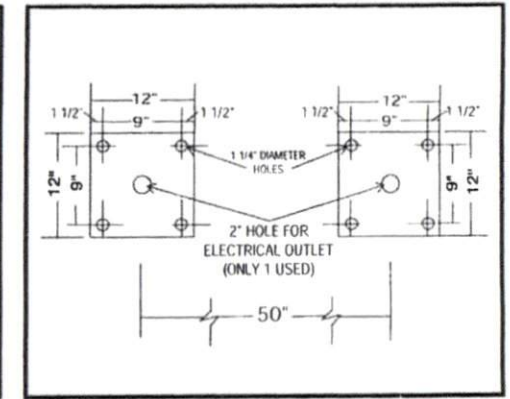


FIGURE 1



BASE PLATE ARRANGEMENT
Scale: 3/4" = 1'

1. SIGN LEG
2. BASE PLATE (WELDED TO LEG AT FACTORY)
3. 3/4" x 30" ANCHOR BOLTS 8-REQUIRED
4. #5 REBAR TIED AT EACH JOINT
(SUPPLIED BY CUSTOMER)
5. CONDUIT (SUPPLIED BY CUSTOMER)

FOOTING SPECIFICATIONS

- PROVIDE 1 HOLE 4' DEEP x 7' LONG x 2' 6" WIDE
- LESS THAN 3 CUBIC YARDS OF CONCRETE NECESSARY

Foundation engineering should be reviewed by local authorities due to varying soil & wind load conditions. Local frost line requirements may supercede depth dimension.

ELECTRICAL REQUIREMENTS

MODEL	VOLT	AMP
WITNESS SUPRA	120 VOLT	6 AMPS
MASCOT SUPRA		
NARRATOR SUPRA		
SENTINEL SUPRA	120 VOLT	9.8 AMPS
HERALD SUPRA		

PLEASE NOTE:

Tape the threads of the anchor bolts for protection against sand and cement.

	DATE	DWG. #
	5-16-03	FT-002
LOCATION:		

JMS TEMPLATE MUST BE USED TO SET ANCHOR BOLTS INTO CONCRETE