



VICINITY MAP
NOT TO SCALE

OWNER INFORMATION:

H M'S KIDS INC
3035 NC HWY 87 S
CAMERON, NC 28326

PARTY OF INTEREST:

YMCA OF THE SANDHILLS, FAYETTEVILLE, NC
RICK HOUP, CEO
2717 FT. BRAGG ROAD
FAYETTEVILLE, NC 28303
(910)426-9622 (office)
EMAIL: rickh.ymcanc@gmail.com

SITE NOTES:

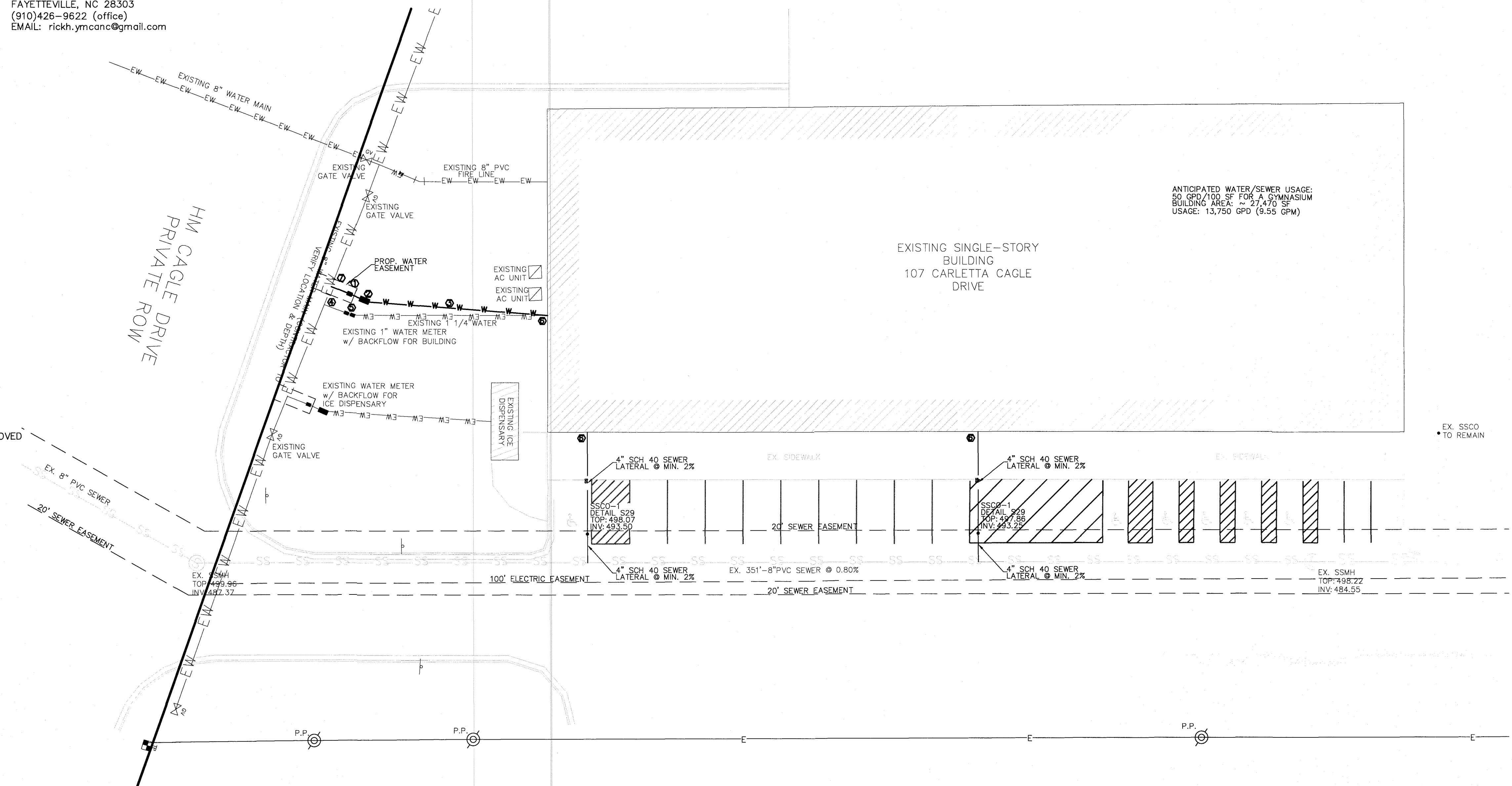
- 1) ZONING : COMMERCIAL (HWY 87 CORRIDOR OVERLAY DISTRICT)
- 2) PROPOSED WATER AND SEWER BY HARNETT COUNTY
- 3) ALL DISTANCES ARE HORIZONTAL
- 4) SITE ADDRESS: 107 CARLETTA CAGLE DRIVE CAMERON, NC 28326
- 5) PIN: 9585-70-0210.000
- 6) DB 3069 PG 0698

UTILITY KEYNOTES:

- 1 2" DOMESTIC WATER METER, CONTRACTOR SHALL COORDINATE WITH HARNETT COUNTY.
- 2 2" DOMESTIC REDUCED PRESSURE BACKFLOW PREVENTER WATTS MODEL 009M2QT OR APPROVED EQUAL FROM HCDPU LIST IN ABOVE GROUND HEATED, INSULATED ENCLOSURE.
- 3 2" DOMESTIC WATER SERVICE, CONTRACTOR SHALL COORDINATE WITH HARNETT COUNTY. REMOVE, "KILL OUT" EXISTING WATER SERVICE TO CORPORATION STOP AT THE MAIN.
- 4 REMOVE EXISTING WATER METER AND BACKFLOW PREVENTER. COORDINATE WITH HARNETT COUNTY.
- 5 LOCATION OF CONNECTION TO BUILDING PLUMBING IS APPROXIMATE. SEE BUILDING PLANS TO VERIFY.
- 6 8"x2" TAPPING SADDLE WITH 2" BALL VALVE.

UTILITY NOTES:

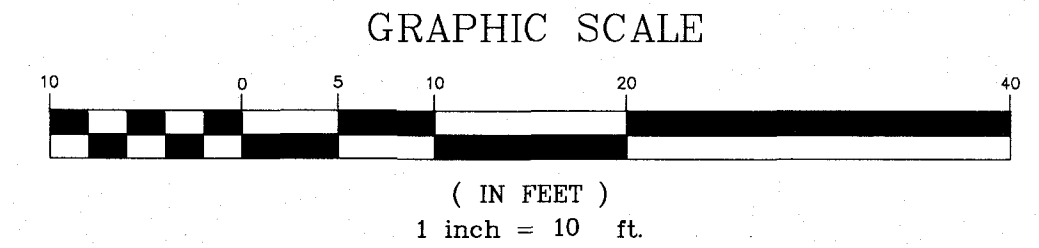
1. UTILITY INFORMATION SHOWN HEREON WAS OBTAINED FROM THE BEST AVAILABLE SOURCE AND MAY OR MAY NOT BE EITHER ACCURATE OR COMPLETE. THE GENERAL CONTRACTOR IS RESPONSIBLE FOR VERIFYING EXACT LOCATIONS OF EXISTING UTILITIES AND IS RESPONSIBLE FOR ANY DAMAGE TO ANY UTILITIES, EITHER PUBLIC OR PRIVATE, SHOWN HEREON OR NOT SHOWN HEREON. ANY REPAIRS SHALL BE DONE TO THE SATISFACTION OF THE APPROPRIATE UTILITY COMPANY.
2. THE GENERAL CONTRACTOR SHALL CONFIRM ALL NEW UTILITY TAP LOCATIONS WITH THE UTILITY OWNERS. ALL FEES SHALL BE THE RESPONSIBILITY OF THE DEVELOPER.
3. IT IS THE RESPONSIBILITY OF THE GENERAL CONTRACTOR TO VERIFY THE ACTUAL LOCATION AND AVAILABILITY OF ALL EXISTING AND PROPOSED UTILITIES IN THE FIELD PRIOR TO GROUND BREAKING.
4. BELOW GRADE WATER SERVICE PIPING SHALL BE TYPE "K" HARD DRAWN COPPER TUBING WITH SILVER SOLDER JOINTS. SOLDER CONTAINING LEAD SHALL NOT BE USED FOR ANY PURPOSE ON THIS PROJECT. WHERE PIPING IS REQUIRED TO RUN BELOW BUILDING SLAB, IT SHALL BE INSTALLED WITHOUT JOINTS BELOW SLAB.
5. WATER PIPING SHALL BE CONNECTED TO BUILDING STUBS. VERIFY LOCATIONS PRIOR TO BEGINNING WATER PIPE INSTALLATION.
6. CONTRACTOR SHALL NOTIFY NCB11 AT 1-800-632-4949 AT LEAST 48 HOURS PRIOR TO BEGINNING CONSTRUCTION OR EXCAVATION TO HAVE UTILITIES LOCATED. CONTRACTOR SHALL CONTACT ANY LOCAL UTILITIES THAT PROVIDE THEIR OWN LOCATOR SERVICE INDEPENDENTLY.
7. ALL UTILITY CONSTRUCTION SHALL BE IN ACCORDANCE WITH THE HARNETT COUNTY PUBLIC UTILITIES AND CROSS CONNECTION CONTROL REGULATIONS AND STANDARDS.



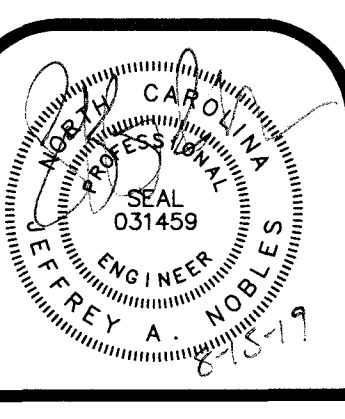
NOTE:
THE CONTRACTOR SHALL NOTIFY MR. ALAN MOSS, UTILITY CONSTRUCTION INSPECTOR WITH HARNETT REGIONAL WATER (HRW) AS WELL AS THE SITE ENGINEER OF RECORD AT LEAST TWO (2) DAYS PRIOR TO CONSTRUCTION COMMENCING SO THAT BOTH PARTIES MAY PERFORM INSTALLATION INSPECTIONS AS NEEDED.
PRIOR TO CONSTRUCTION, THE ENGINEER OF RECORD AND THE UTILITY CONTRACTOR SHALL ATTEND A PRE-CONSTRUCTION MEETING WITH HRW. THEO OWNER/DEVELOPER MAY ATTEND IF DESIRED.

LEGEND	
EXISTING	PROPOSED
DENOTES REBAR OR BREAK IN LINE	○
CONCRETE MONUMENT	□
WATER METER	⊗
GATE VALVE	⊗
WATER LINE	—EX. W—
FIRE HYDRANT	⊗
SANITARY SEWER MANHOLE	⊗
SANITARY SEWER CLEAN OUT	•
SANITARY SEWER LINE	—S—
STORM DRAINAGE LINE	—SD—
CATCH BASIN	⊗
DROP INLET/JUNCTION BOX	⊗
STORM DRAIN MANHOLE	⊗

NOTE - ALL PROPERTY CORNERS DISTINGUISHED BY REBAR UNLESS OTHERWISE NOTED.



ENGINEERING - SURVEYING - DESIGNING - DRAFTING
Larry King & Associates, R.L.S., P.A.
P.O. Box 53787
1333 Morganton Road, Suite 201
Fayetteville, North Carolina 28305
P. (910) 483-4300 F. (910) 483-4052
NC Firm License C-0887
www.LKandA.com



PERMIT REVIEW SET
DO NOT USE FOR CONSTRUCTION

No.	Date	Revision

Owner:
YMCA of the SANDHILLS

CONTACT:
2717 FT. BRAGG RD.
FAYETTEVILLE, NC 28303
(910)426-9622

Project:
YMCA of HARNETT COUNTY

tax id #: 9585-70-0210.000
township: Barbecue
county: Harnett
state: NC

WATER & SEWER CONNECTIONS

CONSTRUCTION DOCUMENTS

job no.: P19-018
date: 5/24/19
drawn by: JN
survey by: CJ
checked by:
sheet no.:

C-01

2016 HCDPU REQUIRE UTILITY NOTES

(Revised 6 - June 2016)
The following utility notes should be added to the coversheet of utility plans for projects located in Harnett County:

- A. The Fire Marshal's Office shall approve all hydrant types and locations in new subdivisions. However, Harnett County Department of Public Utilities (HCDPU) prefers the contractors to install one of the following fire hydrants:
1. American Darling, Mark B-84-B model with a 5/4" main valve opening three way (two hose nozzles and one pumper nozzle).
2. American Darling, Mark B-84-B model with a 5/4" main valve opening three way (two hose nozzles and one pumper nozzle).
B. Fire hydrants are installed at certain elevations. Any grade change in the vicinity of any hydrant which impedes its operation shall become the responsibility of the Utility Contractor for correction. Corrections will be monitored by the HCDPU Utility Construction Inspector and the Harnett County Fire Marshal.
C. The Professional Engineer (PE) shall obtain and provide the NCDNR "Authorization to Construct" permit to the Utility Contractor before the construction of the water line shall begin. The Utility Contractor must post a copy of the NCDNR "Authorization to Construct" permit issued by the North Carolina Department of Environment and Natural Resources - Division of Environmental Health, Public Water Supply Section (NCDNR-DEHPSS) on site prior to the start of construction. The permit must be maintained on site throughout the entire construction process of the proposed water lines that will serve this project.
D. The Utility Contractor shall notify Harnett County Department of Public Utilities (HCDPU) and the Professional Engineer (PE) at least two days prior to construction commencing. The Utility Contractor must schedule a pre-construction conference with Mr. Alan Moss, HCDPU Utility Construction Inspector at least two (2) days before construction commencing. The Utility Contractor must coordinate with HCDPU for regular inspection visitations and acceptance of the water system(s). Construction work shall be performed only during the normal working hours of HCDPU which is 8:00 am - 5:00 pm Monday through Friday. Holiday and weekend work is not permitted by HCDPU.

- Department of Environment and Natural Resources - Division of Water Quality (NCDNR DWQ) on site prior to the start of construction. The permit must be maintained on site during the construction of the sewer system improvements.
B. The Utility Contractor shall notify Harnett County Department of Public Utilities (HCDPU) and the Professional Engineer (PE) at least two days prior to construction commencing. The Utility Contractor must schedule a pre-construction conference with Mr. Alan Moss, HCDPU Utility Construction Inspector at least two (2) days before construction will begin and the Utility Contractor must coordinate with HCDPU for regular inspection visitations and acceptance of the wastewater system(s). Construction work shall be performed only during the normal working hours of HCDPU which is 8:00 am - 5:00 pm Monday through Friday. Holiday and weekend work is not permitted by HCDPU.
C. The Professional Engineer (PE) shall provide HCDPU with a set of NCDNR approved plans marked "Released For Construction" at least two days prior to construction commencing. HCDPU will stamp the approved plans as "Released for Construction" and provide copies to the utility contractor. The Registered Land Surveyor (RLS) shall stake out all lot corners and establish grade stakes for the proposed finish grade for each street and sewer line before the Utility Contractor begins construction or installation of the manholes, sanitary sewer gravity line(s), sewer lift stations and/or sanitary sewer force main(s). The grade stakes should be set with a consistent offset from the street centerline so as not to interfere with the street grading or utility construction.
D. The Utility Contractor shall provide the HCDPU Utility Construction Inspector with material submittals and shop drawings for all project materials prior to the construction of any gravity sewer line(s), manhole(s), sewer lift station(s) and associated force main(s) in Harnett County. The materials to be used on the project must meet the established specifications of HCDPU and be approved by the Engineer of Record prior to construction. All substandard materials or materials not approved for use in Harnett County found on the project site must be removed immediately when noticed by the HCDPU Utility Construction Inspector.
E. The sanitary sewer lateral connections should be installed 90° (perpendicular) to the sanitary sewer gravity lines with schedule 40 PVC pipe. HCDPU requires the Utility Contractor to provide the Professional Engineer (PE) with accurate measurements for locating sanitary sewer service lateral and associated each sanitary sewer clean-out. These measurements should be taken

- from the nearest downstream manhole up along the sanitary sewer main to the in-line wye fitting (or tapping saddle) and then another measurement from the in-line wye fitting (or tapping saddle) to the sewer clean-out stack. These field measurements must be provided to the Professional Engineer (PE) in the red line drawings from the Utility Contractor for proper documentation in the As-Built Record Drawings submitted to HCDPU.
F. The Utility Contractor shall be responsible to locate the newly installed sanitary sewer gravity line(s), sanitary sewer force main(s), sanitary sewer service lateral(s) and all associated sewer clean-out(s) in the proposed sanitary sewer system for other utility companies and their contractors until the new sanitary sewer line(s) and associated apparatus have been approved by the North Carolina Department of Environment and Natural Resources - Division of Water Quality (NCDNR-DWQ) and accepted by HCDPU. All new sanitary sewer lines must have at least three (3) feet of cover and extend under all existing water main and storm water lines with a least 24" of vertical clearance below the bottom of the existing water main and storm water lines.
G. The sanitary sewer gravity line(s), manhole(s), sanitary sewer service lateral(s) and associated clean-out(s) shall be constructed in strict accordance with the standard specifications of the Harnett County Department of Public Utilities. The sanitary sewer gravity line(s) must be pneumatically pressure tested with compressed air at 5 psi and the sanitary sewer force main(s) must be hydrostatically pressure tested with water or air at 200 psi. Sanitary sewer manholes must be vacuum tested to 10 inches of mercury and cannot drop below 9 inches in 60 seconds for 4 ft. diameter manholes, 75 seconds for 5 ft. diameter manholes. All tests mentioned above must be witnessed by the HCDPU Utility Construction Inspector and Engineer.
H. Prior to acceptance, all services will be inspected to insure that they are installed at the proper depths. All sewer clean-outs must be installed so the 4" x 4" long sweep combination wye is at least three (3) feet but not more than four (4) feet below the finished grade unless otherwise approved in writing by HCDPU. The sewer cleanouts shall have a four (4) schedule 40 PVC pipe stubbed from both ends of the 4" x 4" long sweep combination wye to be at least two (2) feet above the finish grade and cover each end with a four (4) inch temporary cap to keep out dirt, sand, rocks, water and construction debris. The vertical stack on each clean-out must be supported by a concrete donut for protection.

constructed in Harnett County. The red line drawings should clearly identify any deviations from the NCDNR approved plans. All change orders must be approved by HCDPU and the Professional Engineer (PE) in writing and properly documented in the red line drawings.

- J. Potable water mains crossing other utilities and non-potable water mains crossing other utilities shall be installed side-by-side to provide a minimum vertical distance of twenty-four (24) inches between the potable water main and all other utilities. The ductile iron pipe must be installed under a non-potable water line such as sanitary sewer or storm sewer lines. If these separations cannot be maintained then the water main shall be installed on the right-of-way. Both the potable water main and the non-potable water line must be cast iron or ductile iron pipe (DIP) of the state minimum separations cannot be maintained. The ductile iron pipe must be at least three (3) feet independent 3/4" water service lines may be installed inside one (1) - two (2) inch schedule 40 PVC conduit or two (2) independent 1" water service lines may be installed inside one (1) - three (3) inch schedule 40 PVC conduit, but each water service shall be tapped directly to the water main. Split services are not allowed by HCDPU.
P. The water main(s), fire hydrants, gate valves, service lines, meter sets and associated appurtenances must be rated for 200 psi and hydrostatically pressure tested to 200 psi. The hydrostatic pressure test (s) must be witnessed by the HCDPU Utility Construction Inspector. The Utility Contractor must notify HCDPU when they are ready to begin filling in lines and coordinate with Harnett County to witness all pressure testing. The Utility Contractor shall coordinate with Harnett County when they are ready to begin filling in lines and coordinate with Harnett County to witness all pressure testing. The Utility Contractor shall coordinate with Harnett County when they are ready to begin filling in lines and coordinate with Harnett County to witness all pressure testing.
Q. The Utility Contractor shall provide a pneumatic pressure test using compressed air or other inert gas on the stainless steel tapping sleeve(s) prior to making the tap on the existing water main. This pneumatic pressure test must be witnessed by the HCDPU Utility Construction Inspector. The Utility Contractor shall provide a pneumatic pressure test using compressed air or other inert gas on the stainless steel tapping sleeve(s) prior to making the tap on the existing water main. This pneumatic pressure test must be witnessed by the HCDPU Utility Construction Inspector.
M. HCDPU requires that meter boxes for 1/2" services shall be 12" wide x 17" long ABS plastic boxes at least 18" in height with cast iron lids/covers. Meter boxes for 1" services shall be 17" wide x 22" long ABS plastic boxes at least 18" in height with plastic lids and cast iron flip covers in the center of the lids. Meter boxes for 2" services shall be 20" wide x 32" long ABS plastic boxes at least 20" in height with plastic lids and cast iron flip covers in the center of the lids.

- I. Once the sanitary sewer gravity line(s) has been installed, pneumatically pressure tested and in place for at least 30 days, the Utility Contractor must contact the HCDPU Utility Construction Inspector to witness the mandrel test on each PVC sanitary sewer gravity line. The Utility Contractor will notify HCDPU to schedule the mandrel testing. The mandrel and proving rings must be supplied by the Utility Contractor. Closed circuit video camera inspections (at the Utility Contractor's expense) may be required by the HCDPU Utility Construction Inspector if the mandrel and mirror tapping testing cannot be completed with satisfactory results. The sanitary sewer lines should be flushed clean using a sewer ball or the proper diameter sewer clean-out(s) in the proposed sanitary sewer system for other utility companies and their contractors until the new sanitary sewer line(s) and associated apparatus have been approved by the North Carolina Department of Environment and Natural Resources - Division of Water Quality (NCDNR-DWQ) and accepted by HCDPU. All new sanitary sewer lines must have at least three (3) feet of cover and extend under all existing water main and storm water lines with a least 24" of vertical clearance below the bottom of the existing water main and storm water lines.
J. The Utility Contractor shall provide the Professional Engineer (PE) and HCDPU Utility Construction Inspector with a set of red line drawings identifying the complete sewer system installed for each project. The red line drawings should identify the materials, pipe sizes and approximate depths of the water lines as well as the gate valve, fire hydrants, meter setters, blow off assemblies and all associated appurtenances for all water lines(s) of the lids.
K. HCDPU requires that the Utility Contractor install tracer wire in the trench with all sanitary sewer force mains. The tracer wire shall be 12 ga. insulated, solid copper conductor and it shall be terminated at the top of the valve boxes or manholes. No spliced wire connections shall be made underground on tracer wires installed in Harnett County. The tracer wire may be secured with duct tape to the top of the pipe before backfilling. The tracer wire must be supported by the concrete donut for protection.
L. The Utility Contractor shall provide the Professional Engineer (PE) and HCDPU Utility Construction Inspector with a set of red line drawings identifying the complete sewer system installed for each project. The red line drawings should identify the materials, pipe sizes and approximate depths of the sewer lines as well as the installed locations of the manhole(s), sanitary sewer gravity line(s), sanitary sewer service laterals, clean-outs, sewer lift station(s) and associated force main(s). The red line drawings should clearly identify any deviations from the NCDNR approved plans. All change orders must be approved by HCDPU and the Professional Engineer (PE) in writing and properly documented in the red line field drawings.

- M. Prior to the commencement of any work within established utility easements or NCDOT right-of-way the Utility Contractor is required to notify all concerned utility companies in accordance with G.S. 87-102. The Utility Contractor must call the NC One Call Center at 811 or (800) 632-4949 to verify the location of existing utilities prior to the beginning of construction. Existing utilities shown in these plans are taken from maps furnished by various utility companies and have not been physically located by the P.E. (i.e. TELEPHONE, CABLE, WATER, SEWER, ELECTRICAL, POWER, FIBER OPTIC, NATURAL GAS, ETC.).
N. The Utility Contractor shall spot dig to expose each existing utility pipe or line within the right-of-way and the Professional Engineer (PE) to allow the PE to adjust the sanitary sewer line design in order to avoid conflicts with existing underground utilities. The Utility Contractor shall coordinate with the utility owner and be responsible for temporary relocation of existing utilities and/or securing existing utility poles, pipes, wires, cables, signs and/or utilities including services in accordance with the utility owner's requirements during sanitary sewer line installation, grading and street construction.
O. When making a tap on an existing sewer force main, the Utility Contractor must have a permit from the North Carolina Department of Environment and Natural Resources - Division of Water Quality (NCDNR DWQ) prior to begin the tap work. The Utility Contractor shall conduct a pneumatic pressure test using compressed air or other inert gas on the stainless steel tapping sleeve and gate valve prior to making the tap on an existing sanitary sewer force main. This pneumatic pressure test must be witnessed by the HCDPU Utility Construction Inspector. The Utility Contractor shall use Romag brand stainless steel tapping sleeve(s) or approved equal for all taps made on sanitary sewer force mains in Harnett County. The Utility Contractor shall use Romag brand Style "CB" sewer saddles with stainless steel bands and cast iron lids/covers in the center of the lids.
P. The Utility Contractor shall provide a grease trap for each sanitary sewer service lateral that will be connected to a restaurant, food processing facility and any other commercial or industrial facility as required by the Harnett County Dept. of Health. The grease trap must be rated for a minimum capacity of at least 1,000 gallons unless otherwise approved in writing by HCDPU.

- writing by the HCDPU Pre-Treatment Coordinator. Garbage disposals should not be installed in homes and businesses that discharge wastewater to the Harnett County Sanitary Sewer System as they are not approved by HCDPU.
Q. Each sewer lift station must be provided with three phase power (at least 480 volts) and construction equipment. The minimum requirements of the latest version of the National Electrical Code (NEC) and Harnett County standard specifications and details. If three phase power is not available from the power company other arrangements must be approved by HCDPU Engineering prior to the start of construction.
R. Where a new sanitary sewer force main is connected to an existing manhole in the Harnett County sewer collection system, the Utility Contractor must provide a protective coating (coal tar epoxy) for the interior surfaces of the manhole to protect it against corrosion, erosion and deterioration from the release of sewer gases such as methane and hydrogen sulfide.
S. The sewer lift station design and associated equipment must meet or exceed the MINIMUM REQUIREMENTS FOR HARNETT COUNTY SEWER LIFT STATIONS 2009 edition. Each sanitary sewer lift station must be constructed with an all-weather access road that is at least 20 feet wide. The lift station site must be covered with weed blocking material and at least six (6) inches of #7 stone (crush and run).
T. Once a sewer lift station has been installed, the Utility Contractor is responsible to schedule a draw down test with HCDPU Engineering and Collections staff, the Professional Engineer (PE), the Electrician, the original equipment manufacturer's (OEM) representatives (For both the Pumps and the Generator). This draw down test must be completed with power supplied from the electrical utility company and with power supplied by the emergency generator with satisfactory results before final inspections are conducted by the HCDPU Utility Construction Inspector.
U. Once the Utility Contractor completes the installation of a sewer lift station, the Professional Engineer (PE) must submit the sewer permit certification and As-Built Record Drawings to the North Carolina Department of Environment and Natural Resources - Division of Water Quality (NCDNR-DWQ) and HCDPU for final approval. The Utility Contractor must supply HCDPU Engineering staff with three original Operation & Maintenance (O&M) Manuals along with the associated pump curves and electrical schematics for each pump and generator. The O&M equipment including all warranty information and documentation.

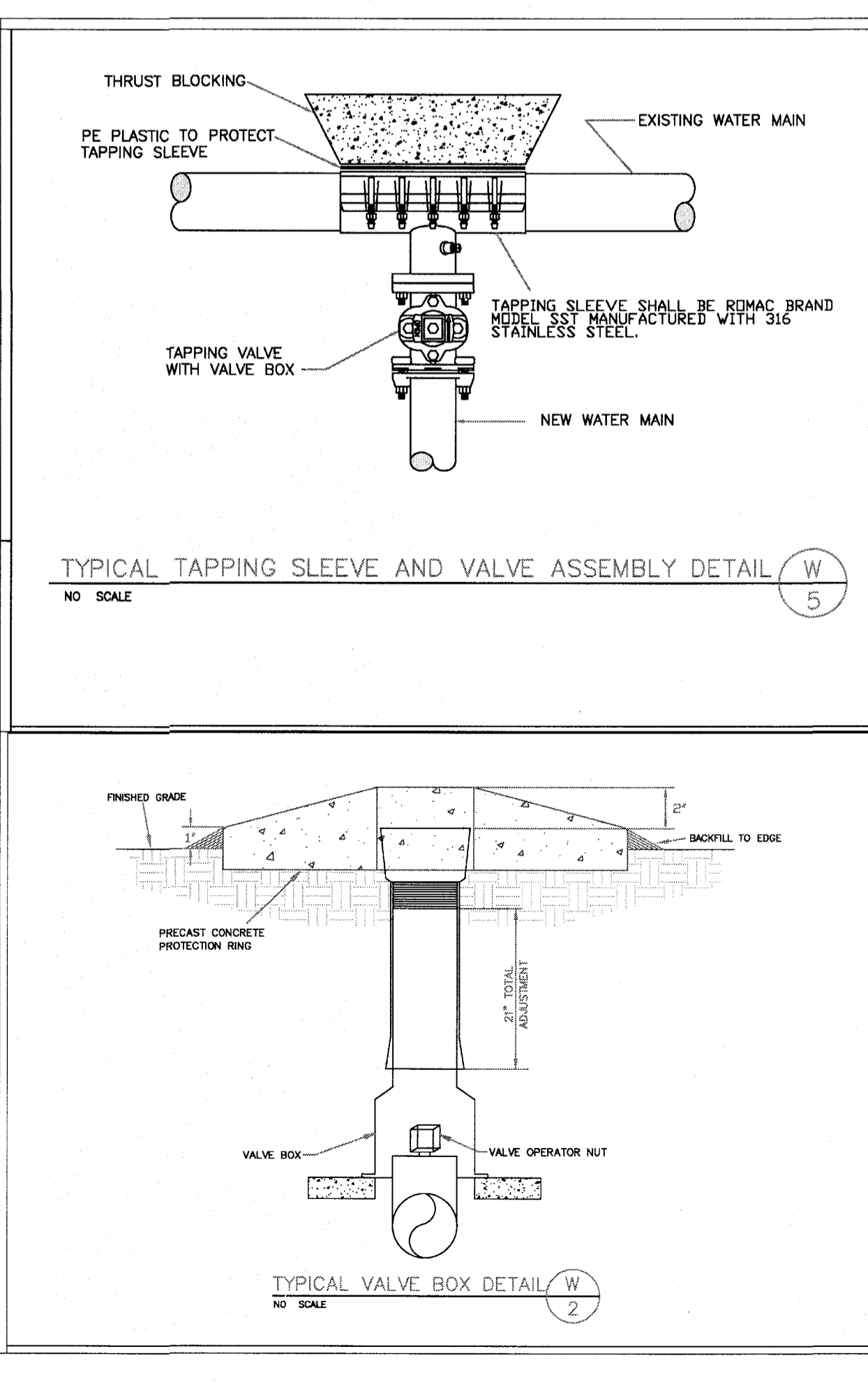
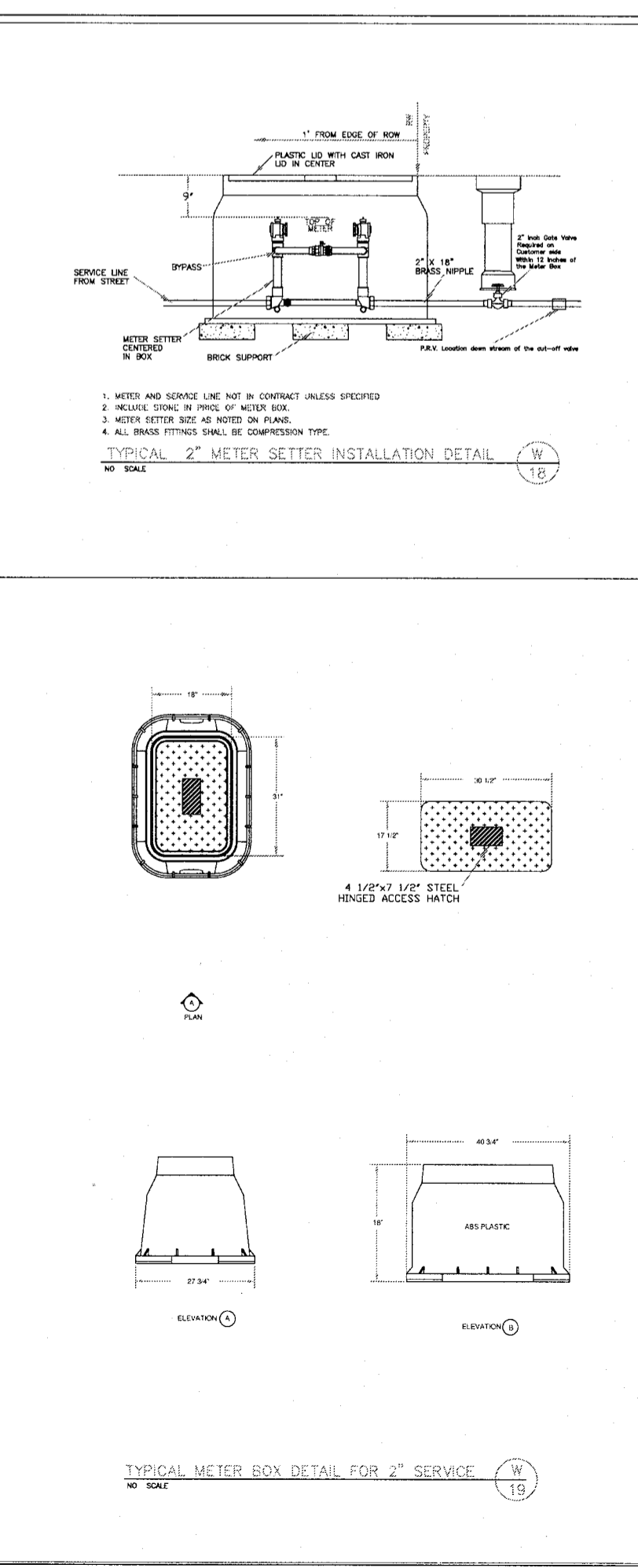
- V. Once the Utility Contractor completes the installation of a sewer lift station, the Developer must pay HCDPU the established System Control and Data Acquisition (SCADA) fees before the SCADA system will be installed on the new sewer lift station. The SCADA system must be installed and operational before the utilities may be accepted by HCDPU and placed into operation.
W. HCDPU requires the Utility Contractor to provide all necessary equipment and devices for the testing and inspection of the sanitary sewer system. The equipment and devices may include but not limited to leveling with auto-levels, manholes, sewer balls, plugs, air compressors and associated compressed air lines. If the HCDPU Utility Construction Inspector requires a closed circuit video camera inspection of the newly constructed sewer system is necessary, then all costs for the closed circuit camera inspection will be the responsibility of the Utility Contractor. All closed circuit video camera inspections must be recorded on VHS tapes that will be returned to HCDPU for record keeping, review and approval of the sewer system.
X. Any use of sewer plugs to temporarily block Harnett County's existing sanitary sewer lines must be coordinated with the HCDPU Collections Supervisor at least two (2) days in advance of installing the plugs. The sewer plugs must be removed as soon as possible once the new sanitary sewer lines have been inspected, pressure tested, mandrel tested, approved by the North Carolina Department of Environment and Natural Resources - Division of Water Quality (NCDNR-DWQ) and accepted by HCDPU to allow the sewer to flow as designed in Harnett County's existing sanitary sewer lines or when so ordered by the HCDPU Collections Supervisor to limit interruptions to the normal flow of the sanitary sewer collection system(s). The Utility Contractor must provide the pumps hoses and necessary connectors for a temporary pump around setup if required by the HCDPU Collections Supervisor. Mr. Randolph Clegg, HCDPU Collections Supervisor may be contacted between 8:00 am and 5:00 pm Monday through Friday at (910) 983-7575 extension 3241.
Y. The Utility Contractor will be responsible for any and all repairs due to leakage or damage resulting from poor workmanship during the one (1) year warranty period once the water system improvements have been approved by HCDPU and the Professional Engineer (PE) in writing to schedule the final inspection once all construction is complete. The Developer's Engineer of Record and the HCDPU Utility Construction Inspector shall prepare a written punch list of any defects or deficiencies noted during the final inspection, should any exist. Upon completion of the punch list, the Developer's Engineer of Record will schedule another inspection. In the event the number of inspections performed by the HCDPU exceeds two, additional fees may be assessed to the Developer.

- approved by NCDNR and accepted by HCDPU. HCDPU will provide maintenance and warranty repairs if necessary due to lack of response within 48 hours of notification of warranty work. The Developer and/or Utility Contractor will be responsible for materials and labor in such cases.
Z. In developments and projects that require utility easements to be established for future HCDPU right-of-way, the Registered Land Surveyor (RLS) must provide the HCDPU Right-of-Way Agent with an official copy of a recorded plat and legal description of the said easement as recorded with the Harnett County Register of Deeds. The recorded documents must be provided to the HCDPU Right-of-Way Agent before the utility improvements within the said easement can be placed into operation. Any and all easements that must be obtained from adjoining property owners must be provided to HCDPU by the Developer at no cost to Harnett County. The final inspection of all sanitary sewer system improvements cannot be scheduled with HCDPU until the streets have been paved, the rights-of-way and utility easements have been secured and stabilized with an adequate stand of grass in place to prevent erosion issues on site.
AA. The Engineer of Record is responsible to insure that construction is, at all times, in compliance with accepted sanitary engineering practices and approved plans and specifications. No field changes to the approved plans are allowed without prior written approval by HCDPU. A copy of each engineer's field report is to be submitted to HCDPU as each such inspection is made on system improvements or testing is performed by the contractor. Water and sewer infrastructure must pass all tests required by HCDPU specifications and those of all applicable regulatory agencies. These tests include, but are not limited to: air test, vacuum test, mandrel test, visual test, pressure test, bacteriological test, etc. A HCDPU Inspector must be present during testing and all test results shall be submitted to HCDPU. All tests must be satisfied before the final inspection will be scheduled with the HCDPU Inspector. The Engineer of Record must request in writing to schedule the final inspection once all construction is complete. The Developer's Engineer of Record and the HCDPU Utility Construction Inspector shall prepare a written punch list of any defects or deficiencies noted during the final inspection, should any exist. Upon completion of the punch list, the Developer's Engineer of Record will schedule another inspection. In the event the number of inspections performed by the HCDPU exceeds two, additional fees may be assessed to the Developer.

Larry King & Associates, R.L.S., P.A.
ENGINEERING - SURVEYING - DESIGNING - DRAFTING
P.O. Box 53787
1333 Morganton Road, Suite 201
Fayetteville, North Carolina 28305
P. (910) 483-4300 F. (910) 483-4052
NC Firm License C-0887
www.lkingra.com

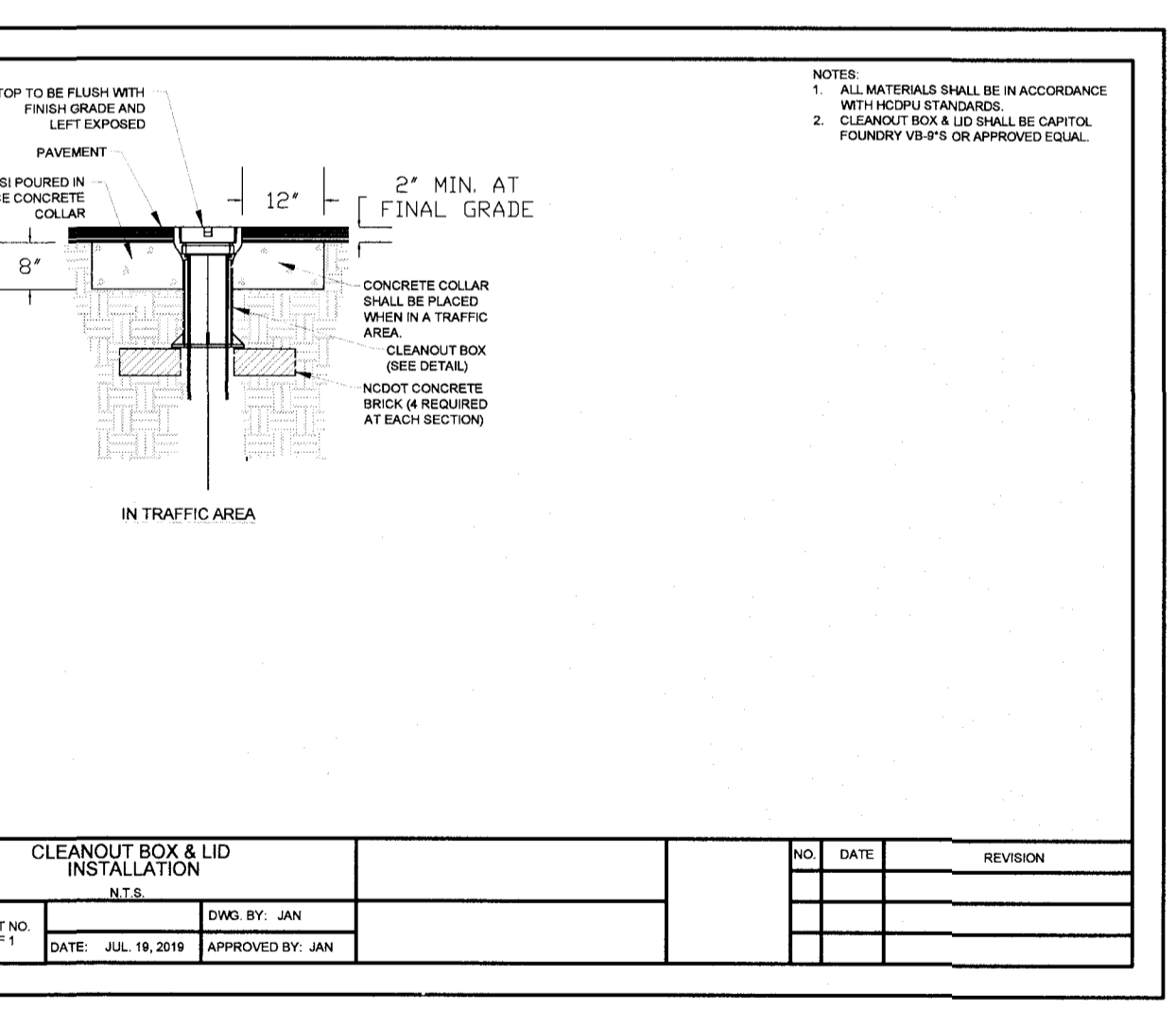
PERMIT REVIEW SET
DO NOT USE FOR CONSTRUCTION

Owner:
YMCA of the SANDHILLS
CONTACT:
2717 FT. BRAGG RD.
FAYETTEVILLE, NC 28303
(910) 426-9622
Project:
YMCA of HARNETT COUNTY
tax id #: 9585-70-0210-000
township: Barboque
county: Harnett
state: NC
Construction Documents
job no.: P19-018
date: 5/24/19
drawn by: JN
checked by: CJ
surveyed by:
sheef no.:



GASKETED FITTINGS FOR PVC TRUSS PIPE
TYPE AVAILABLE SIZES
SADDLE WYE WITH GASKETED 1/2\"/>

CAPITOL FOUNDRY OF VA, INC.
2826 CRENSHAW CIRCLE
VIRGINIA BEACH, VA 23462
PHONE: (757) 421-9411
FAX: (757) 427-9368



WATER & SEWER CONNECTIONS
CONSTRUCTION DOCUMENTS
job no.: P19-018
date: 5/24/19
drawn by: JN
checked by: CJ
surveyed by:
sheef no.: