



Approved

button 08/06/2019

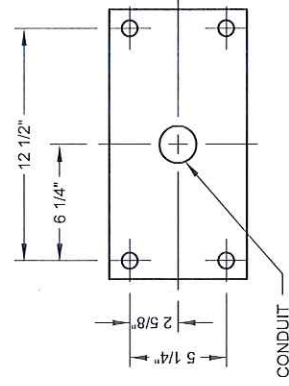
THE MATCHPLATE, COLUMN, AND FOUNDATION ARE DESIGNED TO WITHSTAND A DESIGN WINDSPEED OF 120 MPH.

PROFESSIONAL ENGINEER STAMP IS LIMITED TO THE COLUMN, MATCHPLATE, AND FOUNDATION

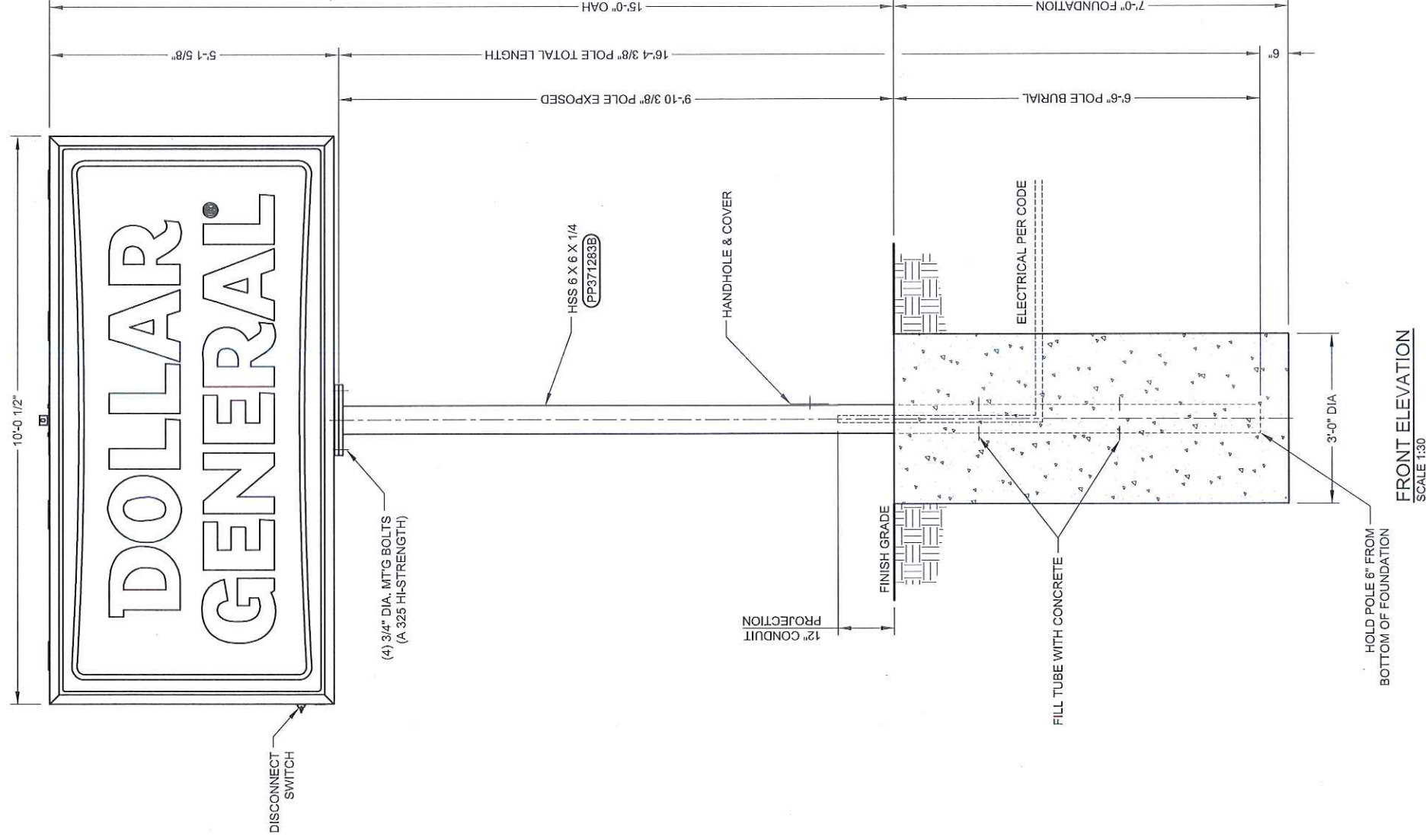
FOUNDATION DESIGNED USING A MINIMUM LATERAL SOIL BEARING PRESSURE OF 200 PSF PER FOOT OF DEPTH (I.E. SANDY GRAVEL/ GRAVEL). IF SOIL CONDITIONALS ON SITE DO NOT MEET THIS REQUIREMENT (I.E. SAND, CLAY AND/OR SILT) NOTIFY THE ENGINEER OF RECORD BEFORE PROCEEDING.

SIGN MTG. PATTERN

SCALE 1:10



OVERTURNING DIRECTION



GENERAL NOTES  
INSTALLER TO PROVIDE COMPLETION PHOTOS OF FOUNDATION WITH REBAR, CONDUIT & POLE(S) (BEFORE & AFTER POUR), MATCH PLATE/SIGN CONNECTIONS, ANY WELDED CONNECTIONS, ELECTRICAL WIRING AND OVERALL ELEVATION.

THIS SIGN IS INTENDED TO BE INSTALLED IN ACCORDANCE WITH THE REQUIREMENTS OF ARTICLE 600 OF THE NATIONAL ELECTRIC CODE AND/OR OTHER APPLICABLE LOCAL CODES. THIS INCLUDES PROPER GROUNDING AND BONDING OF THE SIGN.

INSTALLER TO BE SURE SIGNS ARE PROPERLY INSTALLED, CONNECTED AND GROUNDED.

LANDSCAPING MATERIALS SHOULD BE KEPT MINIMUM TWO INCHES AWAY FROM SIGN POLES OR BASE PLATES.

THIS DRAWING IS FOR INSTALLATION PURPOSES ONLY AND NOT TO BE USED FOR MANUFACTURING.

CONCRETE SPECIFICATION

1.83 CU. YDS. TOTAL. CONCRETE SHALL HAVE A MIN. COMPRESSIVE STRENGTH OF 3,000 PSI @ 28 DAYS. REINFORCING STEEL SHALL HAVE A MIN. YIELD STRENGTH OF 60,000 PSI. RECOMMENDED MIN. CURE TIME OF 7 DAYS BEFORE PROCEEDING WITH INSTALLATION.

LIFTING HOLE NOTE

ANY LIFTING HOLES CREATED ARE THE RESPONSIBILITY OF THE INSTALLER. LIFTING HOLES ARE TO BE SEALED BY A CAP PLATE, WELDED OVER TO COVER AND THEN PAINTED.

WELDING NOTE

ANY REQUIRED WELDING IS TO BE COMPLETED BY AN AWS CERTIFIED WELDER QUALIFIED IN THE APPLICABLE POSITIONS NEEDED.

DESIGN NOTE

SIGN, POLE, AND CONCRETE FOUNDATION ARE DESIGNED TO WITHSTAND A WIND LOAD OF 31 PSF.

CONCRETE BASE DESIGNED USING A LATERAL SOIL BEARING CAPACITY OF 150 PSF / FT. OF DEPTH. IF THESE SOIL CONDITIONS DO NOT EXIST AT THE FOUNDATION LOCATION, IT IS THE ERECTOR'S RESPONSIBILITY TO NOTIFY EVERBRITE, LLC PRIOR TO PERFORMING ADDITIONAL EXCAVATION OR ANY CONCRETE PLACEMENT.

INSTALLATION INSTRUCTIONS

- 1. STAKE FOUNDATION AREA AND CONFIRM FINAL GRADE REQUIREMENTS WITH G. C.
- 2. EXCAVATE FOUNDATION AREA.
- 3. SET POLE(S), REBAR AND CONDUIT STUB. (PRIMARY ELECTRICAL SERVICE TO BASE BY G.C.)
- 4. POUR CONCRETE. ALLOW CONCRETE CURE TIME AS REQUIRED. RECOMMENDED MIN. CURE TIME OF 7 DAYS BEFORE PROCEEDING WITH INSTALLATION.
- 5. MOUNT SIGNAGE ON POLE(S) (INSTALLER TO PROVIDE WIRE BETWEEN SIGN AND BASE OF POLE.)
- 6. MAKE FINAL ELECTRICAL HOOK UP TO PRIMARY (ALL ELECTRICAL TO MEET LOCAL CODES.)
- 7. TEST SIGNAGE FOR PROPER FUNCTION AND LIGHTING.
- 8. REMOVE ANY LIFTING BRACKETS AND REINSTALL BOLTS.
- 9. CLEAN UP AREA AND REMOVE ANY PACKING MATERIAL. DO NOT DISCARD ANY MATERIAL OR DEBRIS INTO ON SITE DUMPSTERS.

EVERBRITE TO FURNISH

- 1. 5' X 10' (P50) DG SIGN
- 2. MOUNTING POLE

INSTALLER TO FURNISH

- 1. ALL ELECTRICAL COMPONENTS REQUIRED
- 2. FOUNDATION
- 3. ALL MOUNTING HARDWARE

GENERAL CONTRACTOR TO FURNISH

- 1. PRIMARY WIRES FROM BUILDING TO SIGN

ELECTRICAL SPECIFICATION:

LAMPS : (10) F60T12 CW/HO  
BALLAST : (2) EESB-832-16L  
CURRENT DRAW : 4.8 AMPS @ 120 VOLTS  
60 HZ, (1) 20 AMP CIRCUIT  
LUMENS : 54,000 TOTAL  
LUMENS PER SQ FT : 1174  
AREA : 50.94 SQ FT

POLE SPECIFICATION:

APPROX. POLE WEIGHT : 336 LBS  
BURIED POLE LENGTH : 6'-6"  
EXPOSED POLE LENGTH : 9'-10 3/8"  
TOTAL POLE LENGTH : 16'-4 3/8"



07/24/2019

INSTALLATION DRAWING

SITE

DRAWN BY: IMPACT-TDT DATE: 09/29/17

CHK BY: RHB DATE: 10/03/17

SCALE: AS SHOWN REF

PROJECT NO. DWG NO.

371283

IN371283B

REV.

A

THESE DRAWINGS ARE THE EXCLUSIVE PROPERTY OF EVERBRITE, LLC. USE OF, OR DUPLICATION IN ANY MANNER WITHOUT EXPRESS WRITTEN PERMISSION OF EVERBRITE, LLC, IS PROHIBITED.

Everbrite  
4949 SC. 110TH ST.  
P.O. BOX 20020  
GREENFIELD, WI 53220  
414-529-3500

DOLLAR GENERAL 5' X 10' (P50) SIGN @ 15'-0" OAH