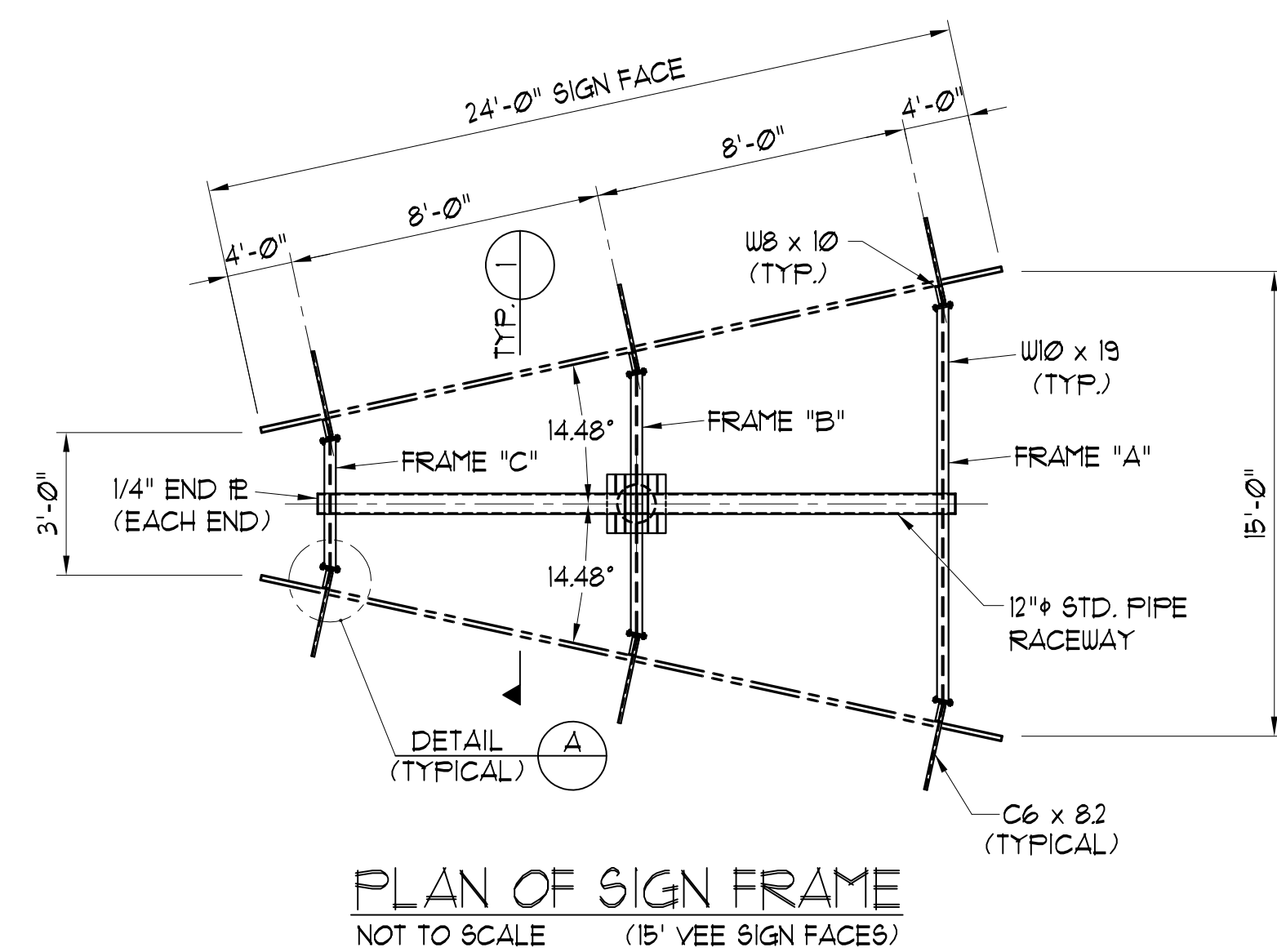
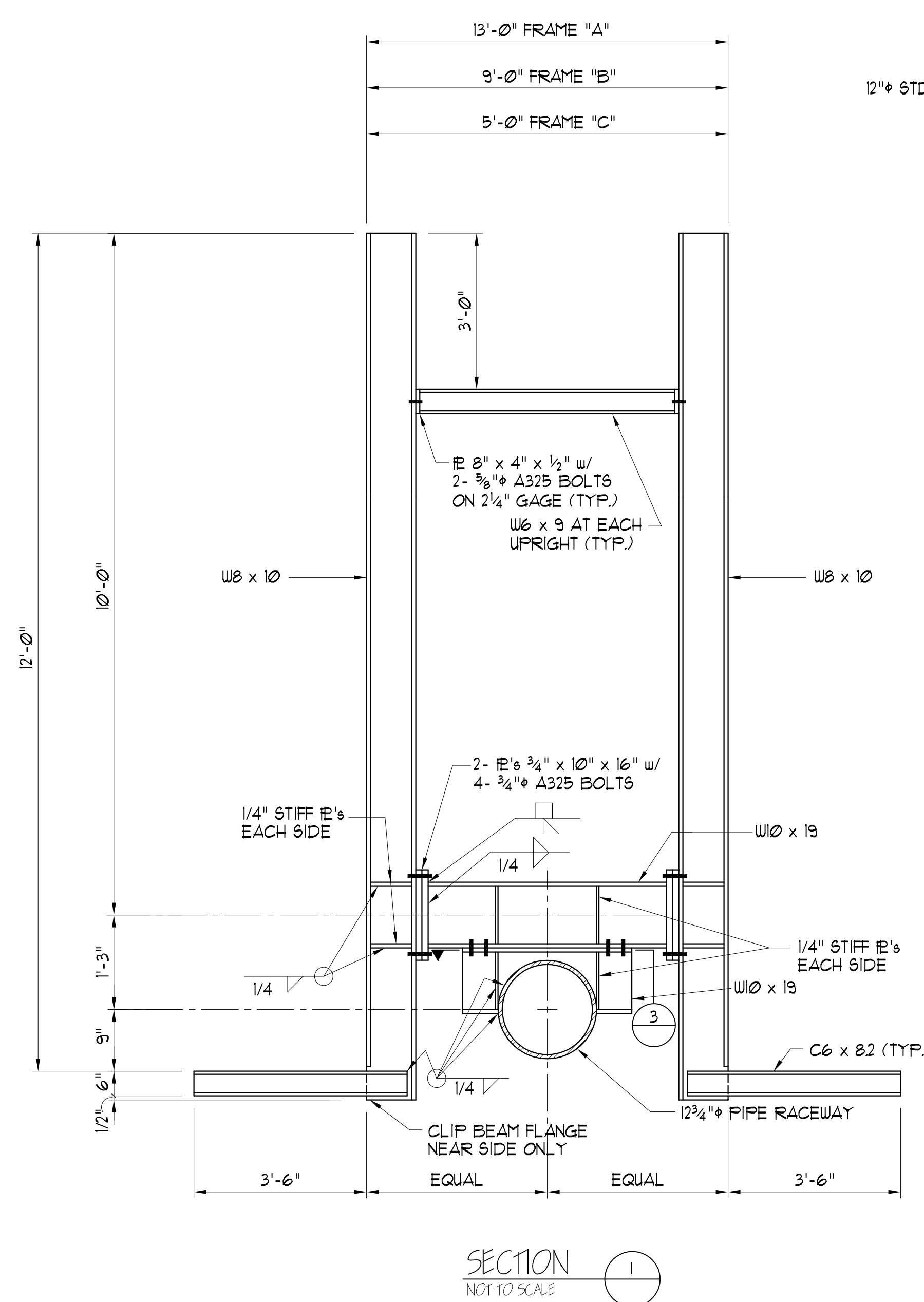


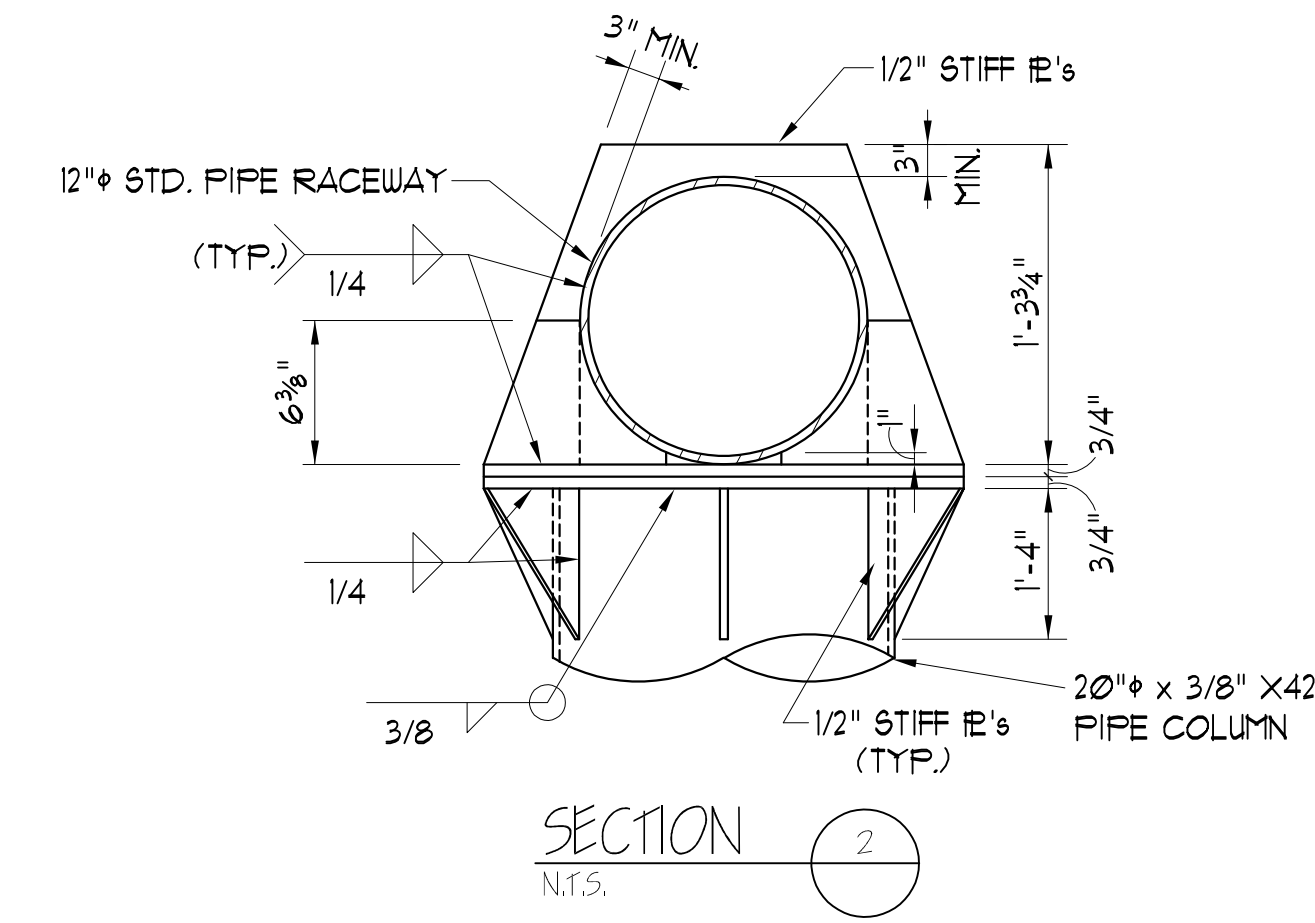
**SIGN FRAME ELEVATION**  
NOT TO SCALE



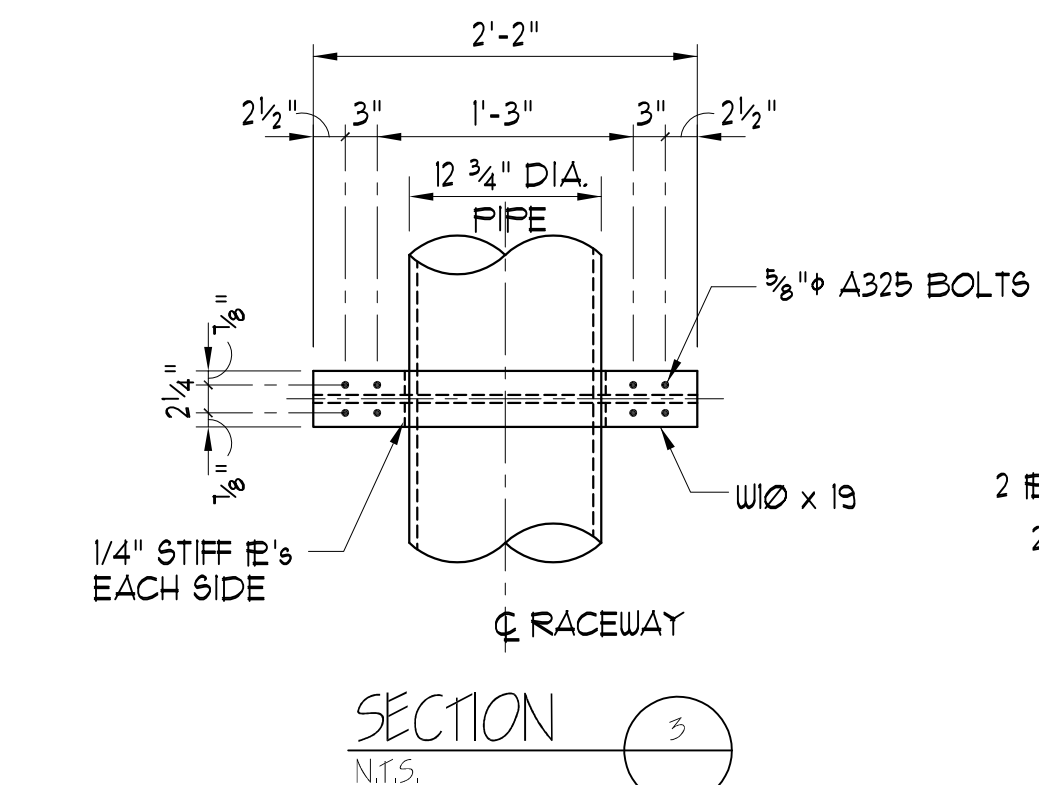
**PLAN OF SIGN FRAME**  
NOT TO SCALE (15' VEE SIGN FACES)



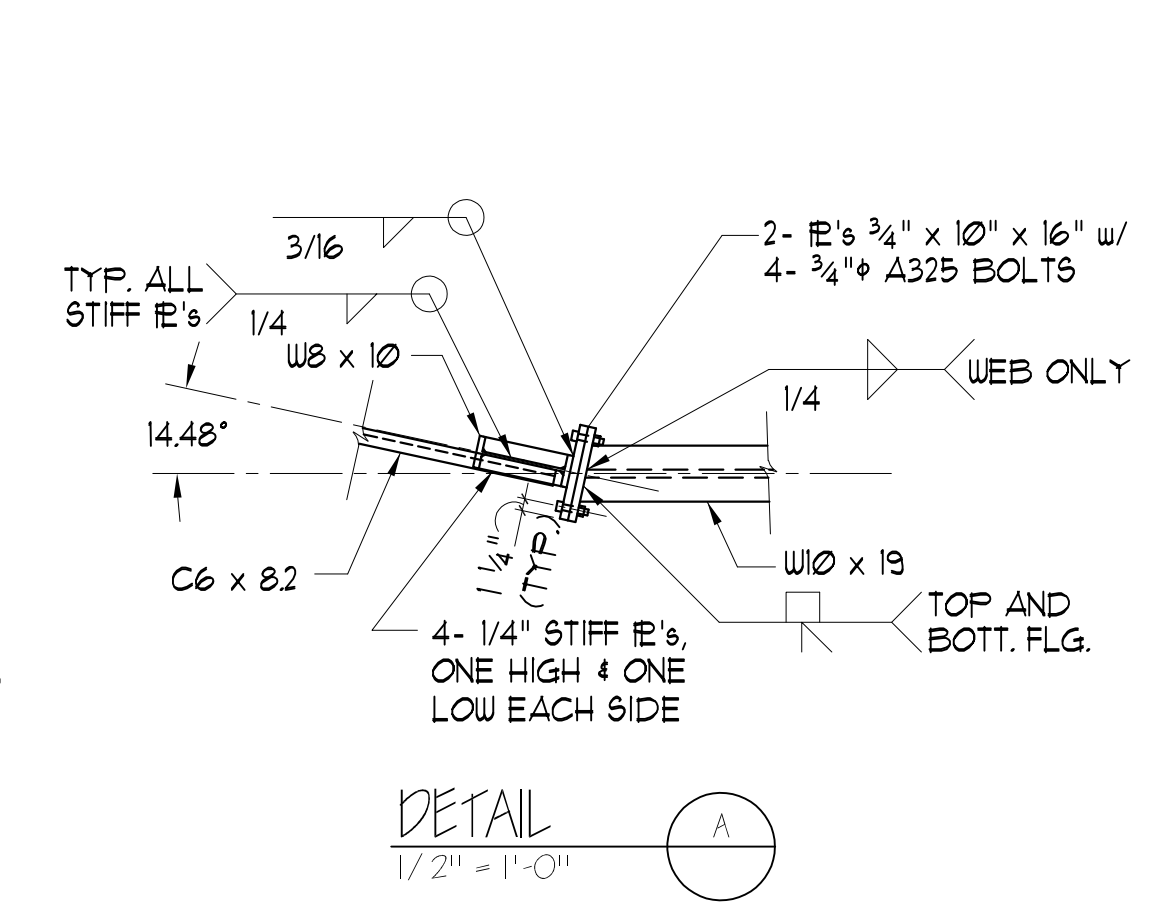
**SECTION 1**  
NOT TO SCALE



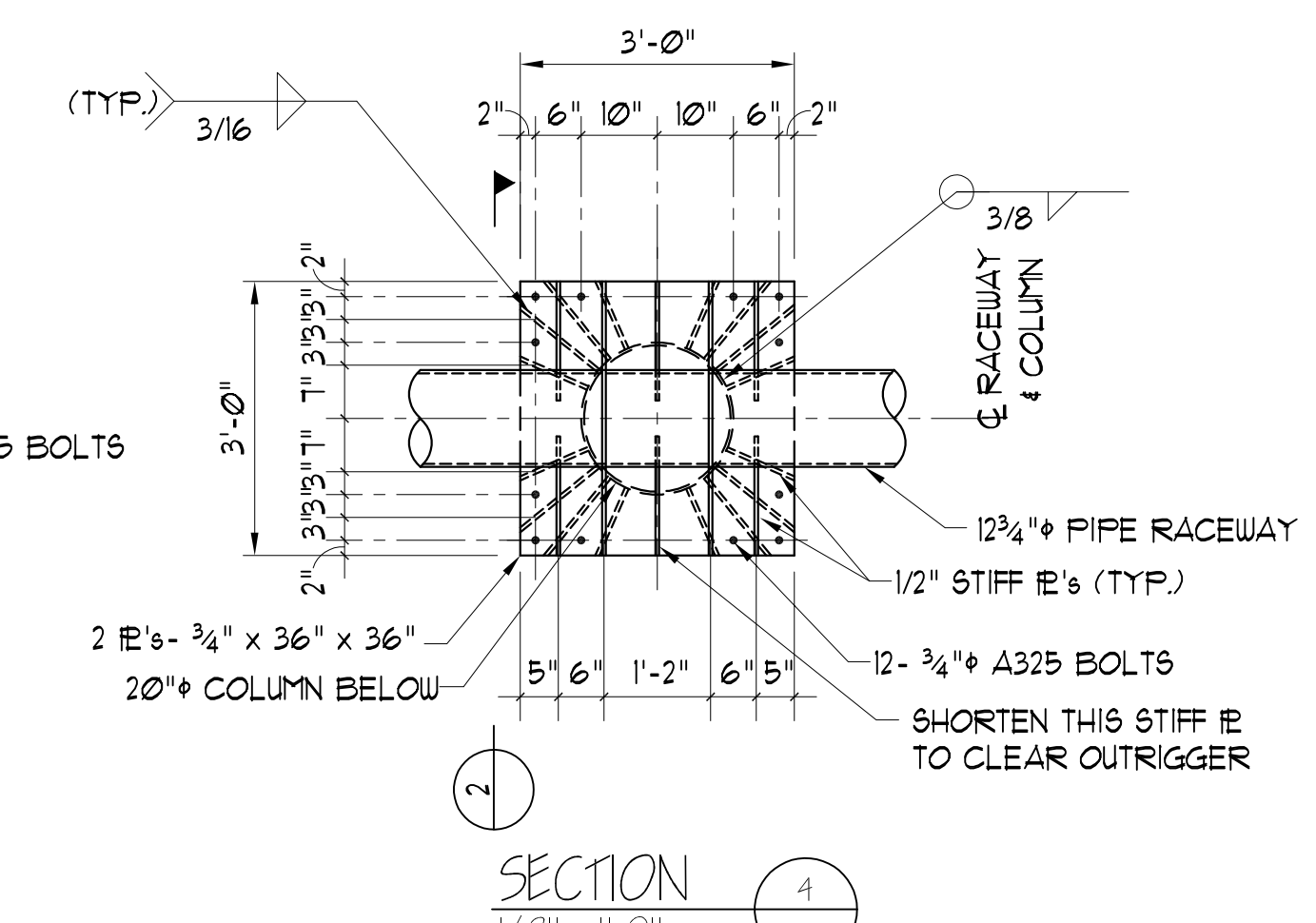
**SECTION 2**  
NOT TO SCALE



**SECTION 3**  
NOT TO SCALE



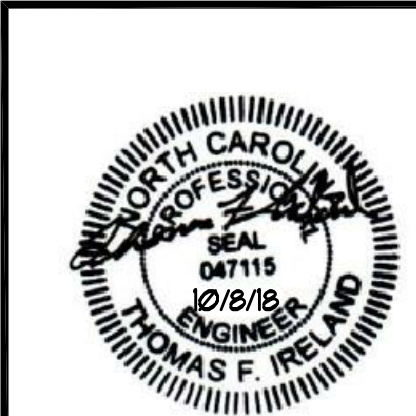
**DETAIL A**  
1/2" = 1'-0"



**SECTION 4**  
1/2" = 1'-0"

- NOTES:**
1. ALL BOLTS 3/4" A325 GALVANIZED UNO.
  2. CONCRETE STANDARD WEIGHT 3000 P.S.I. @ 28 DAYS COMPRESSIVE STRENGTH.
  3. DESIGN WIND LOAD 100 MPH, EXPOSURE "C" PER 2012 NORTH CAROLINA BUILDING CODE.
  4. ALL STEEL SHALL BE A.S.T.M. A36 UNLESS NOTED. (WIDE FLANGES SHALL BE A992-50).
  5. MAXIMUM SIGN FACE AREA 200 SQUARE FEET.
  6. ALL WELDS SHALL BE MADE BY AN AWS. CERTIFIED WELDER USING E70 FILLER MATERIAL.
  7. MINIMUM LATERAL PASSIVE SOIL BEARING CAPACITY SHALL BE 400 P.S.F. PER FOOT OF DEPTH.

B & P JOB NO. 10500104



<b>OUTDOOR SPECIALIST, INC.</b> Augusta, Georgia			
SIGN LOCATION: ERWIN, NORTH CAROLINA			
scale : NOTED	revisions	by	date
date : 10/2/18			
drawn : TED			
ckd. : T.F.I.			

**SIGN FRAME #3535L-061**

E5-264  
OK 5/2/18