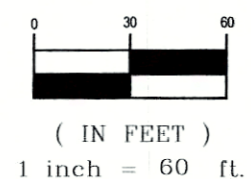


ZONING INFORMATION

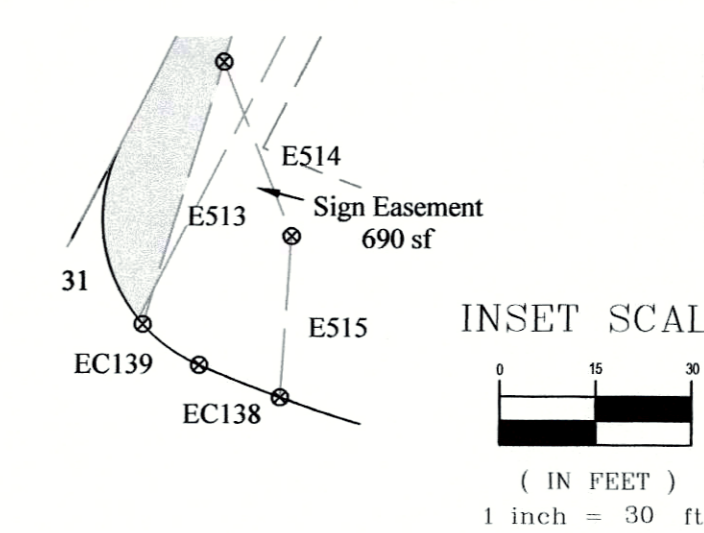
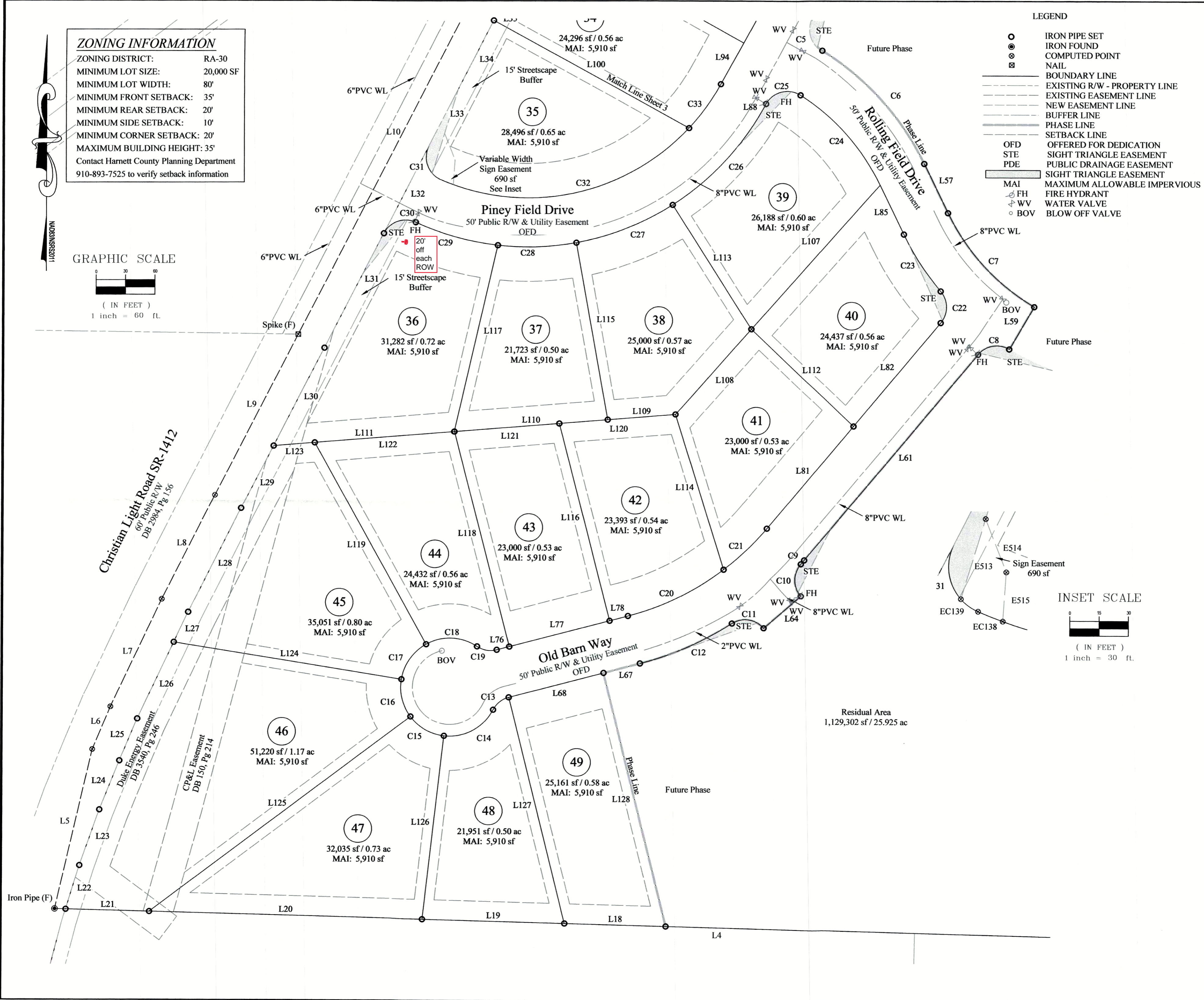
ZONING DISTRICT: RA-30
 MINIMUM LOT SIZE: 20,000 SF
 MINIMUM LOT WIDTH: 80'
 MINIMUM FRONT SETBACK: 35'
 MINIMUM REAR SETBACK: 20'
 MINIMUM SIDE SETBACK: 10'
 MINIMUM CORNER SETBACK: 20'
 MAXIMUM BUILDING HEIGHT: 35'
 Contact Harnett County Planning Department
 910-893-7525 to verify setback information

GRAPHIC SCALE



LEGEND

- IRON PIPE SET
- IRON FOUND
- COMPUTED POINT
- ⊗ NAIL
- BOUNDARY LINE
- - - EXISTING R/W - PROPERTY LINE
- - - EXISTING EASEMENT LINE
- - - NEW EASEMENT LINE
- - - BUFFER LINE
- - - PHASE LINE
- - - SETBACK LINE
- OFD OFFERED FOR DEDICATION
- STE SIGHT TRIANGLE EASEMENT
- PDE PUBLIC DRAINAGE EASEMENT
- SIGHT TRIANGLE EASEMENT
- MAI MAXIMUM ALLOWABLE IMPERVIOUS
- FH FIRE HYDRANT
- WV WATER VALVE
- BOV BLOW OFF VALVE



Bateman Civil Survey Company
 Engineers • Surveyors • Planners
 2524 Reliance Avenue, Apex, NC 27539
 Phone: 919.577.1080 Fax: 919.577.1081
 NCBELS FIRM No. C-2378

SUBDIVISION PLAT
MASON POINTE SUBDIVISION
 Phase 1A
 HECTORS CREEK TOWNSHIP
 HARNETT COUNTY, NC

Exclusively For:
 KB Home Carolinas
 4506 S. Miami Blvd. #100
 Durham, NC, 27703

Designed By: N/A
 Drawn By: JCH
 Checked By: JWB
 Scale: 1"=60'
 Date: 07/11/2018
 Project Number: 180102

SHEET
4 OF 5
 SUBDIVISION

Residual Area
 1,129,302 sf / 25.925 ac