

RENAISSANCE  
RESIDENTIAL DESIGN, INC.

RALEIGH, NC 27612  
919 848-4128  
WWW.RRDCAROLINA.COM

"The art of transforming your vision into reality."

RENAISSANCE RESIDENTIAL DESIGN, INC.  
RESERVES THE RIGHT TO MAKE  
MODIFICATIONS TO FLOOR PLANS,  
DIMENSIONS, MATERIALS, AND  
SPECIFICATIONS WITHOUT NOTICE.  
THESE DRAWINGS ARE FOR THE  
PURPOSE OF CONVEYING AN  
ARCHITECTURAL CONCEPT ONLY.

RENAISSANCE RESIDENTIAL DESIGN, INC.  
HEREBY EXPRESSLY RESERVES ITS  
COMMON LAW COPYRIGHT AND OTHER  
PROPERTY RIGHTS IN THESE PLANS.  
THESE PLANS AND DRAWINGS ARE NOT  
TO BE REPRODUCED, CHANGED, OR  
CORPED IN ANY FORM OR MANNER  
WITHOUT FIRST OBTAINING THE EXPRESS  
WRITTEN CONSENT OF RENAISSANCE  
RESIDENTIAL DESIGN, INC. NOR ARE  
THEY TO BE ASSIGNED TO ANY THIRD  
PARTY WITHOUT FIRST OBTAINING SAID  
WRITTEN PERMISSION AND CONSENT.



PRICES, PROMOTIONS, INCENTIVES, FEATURES, OPTIONS,  
FLOOR PLANS, ELEVATIONS, DESIGN, MATERIALS, AND  
DIMENSIONS ARE SUBJECT TO CHANGE WITHOUT NOTICE.  
SQUARE FOOTAGE AND DIMENSIONS ARE ESTIMATED AND  
MAY VARY IN ACTUAL CONSTRUCTION. ACTUAL POSITION OF  
HOUSE ON LOT WILL BE DETERMINED BY THE SITE PLAN AND  
PLAT PLAN. FLOOR PLANS AND ELEVATION DRAWINGS ARE  
COPYRIGHTED PROPERTY OF ONSITE HOMES. ANY USE,  
REPRODUCTION, ADAPTATION, OR DISPLAY OF THE PLANS IS  
STRICTLY PROHIBITED. SEE NEW HOME SALES CONSULTANT  
FOR CURRENT DETAILS. COPYRIGHT 2017 ONSITE HOMES

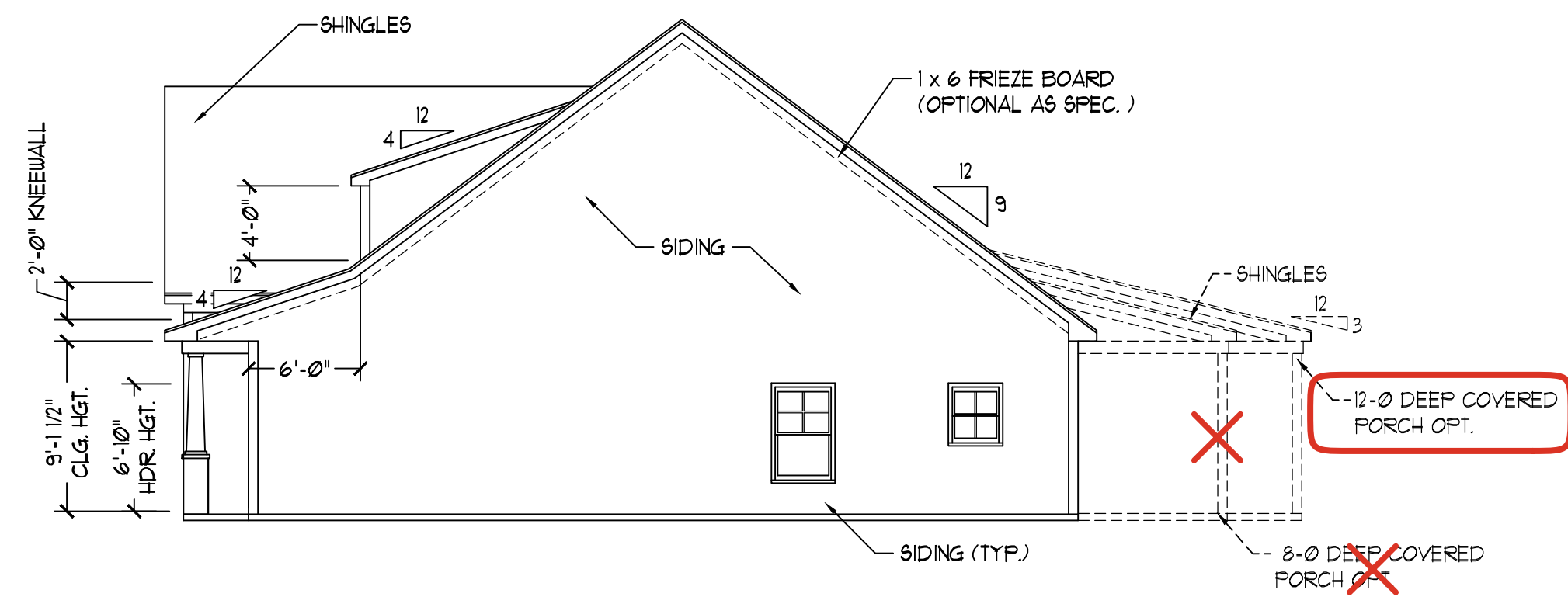
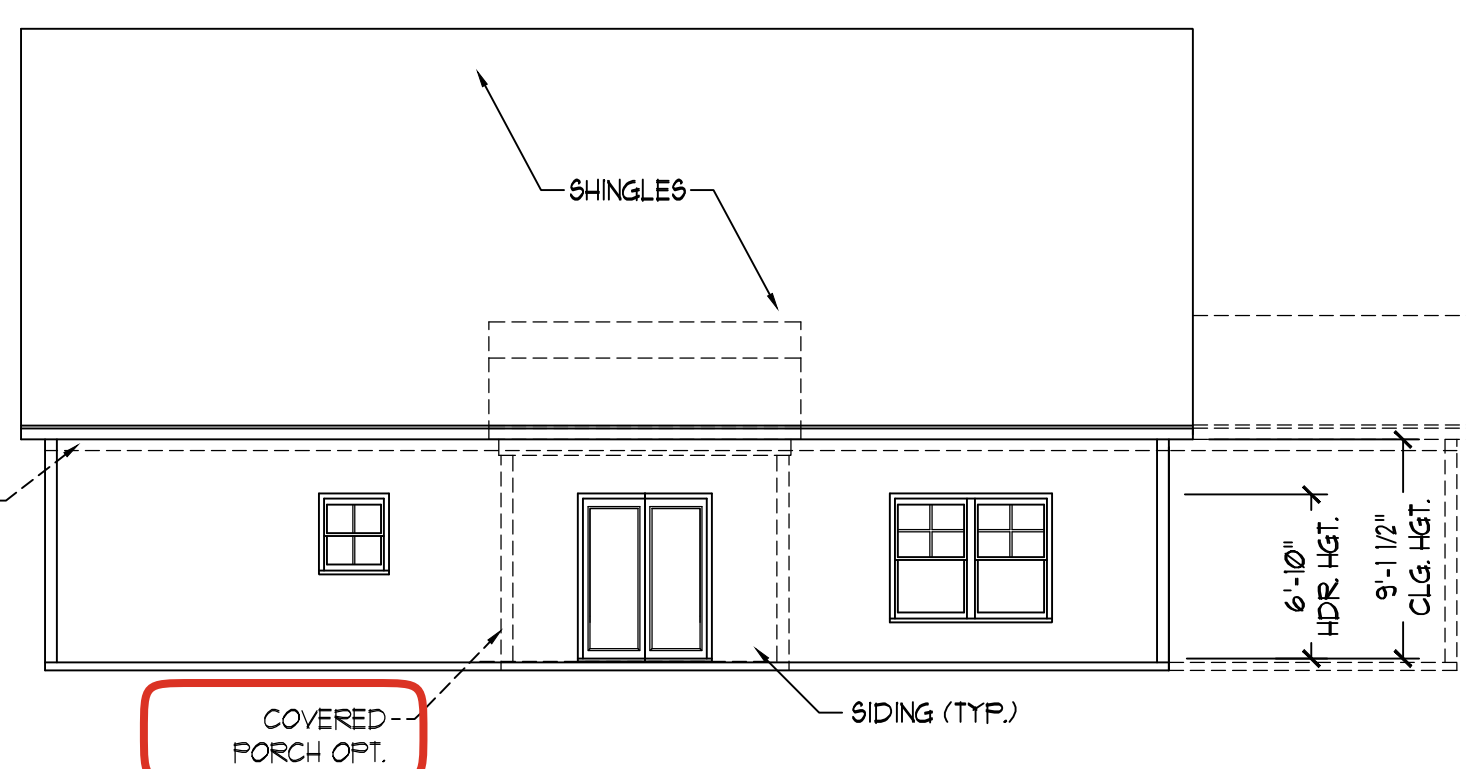
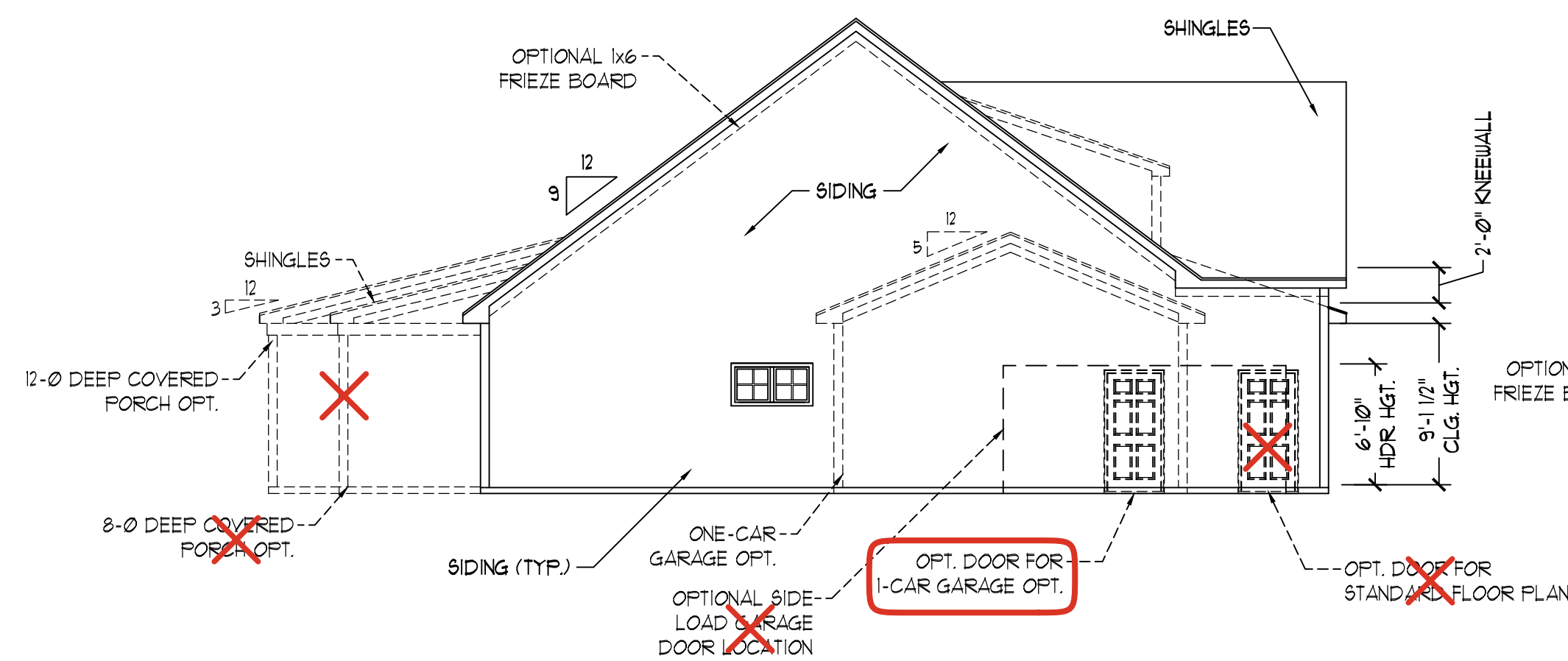
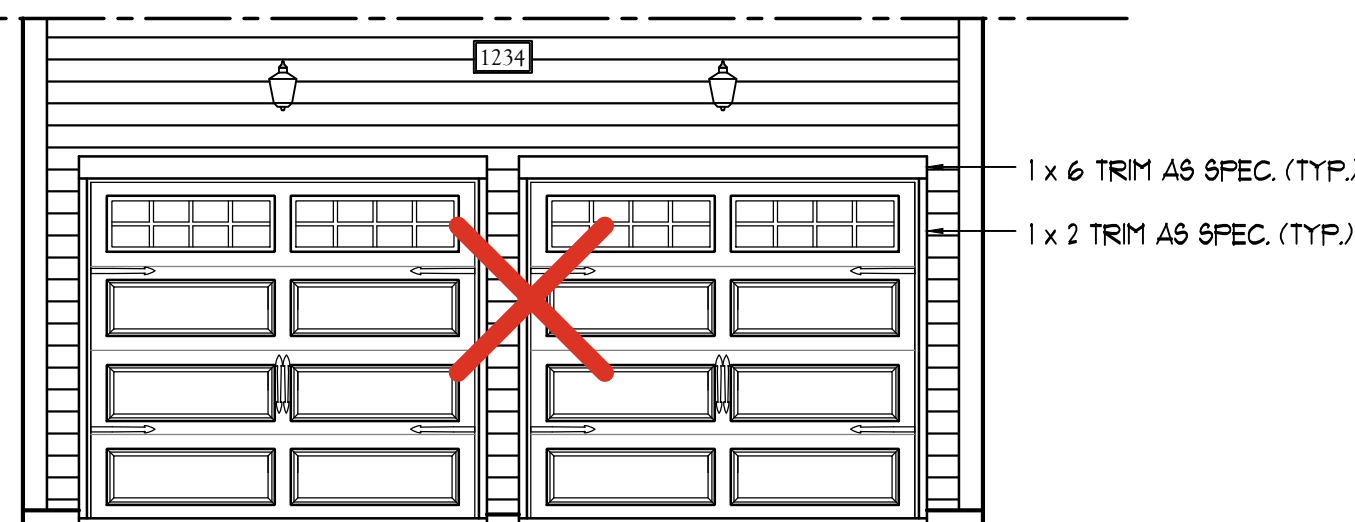
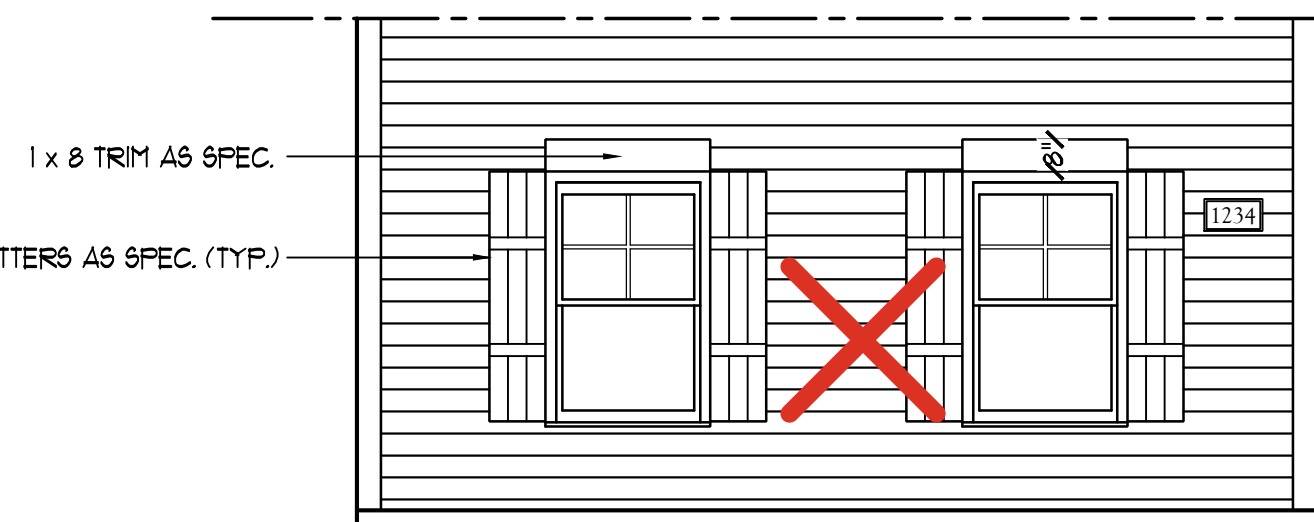
ONSITE HOMES, INC.  
CUMBERLAND  
LOT #12 JAMES FARM

DATE: FEBRUARY 8, 2021  
REV.:  
SCALE: AS NOTED  
DRAWN BY: WG  
ENGINEERED BY:  
REVIEWED BY:

B - ELEVATIONS

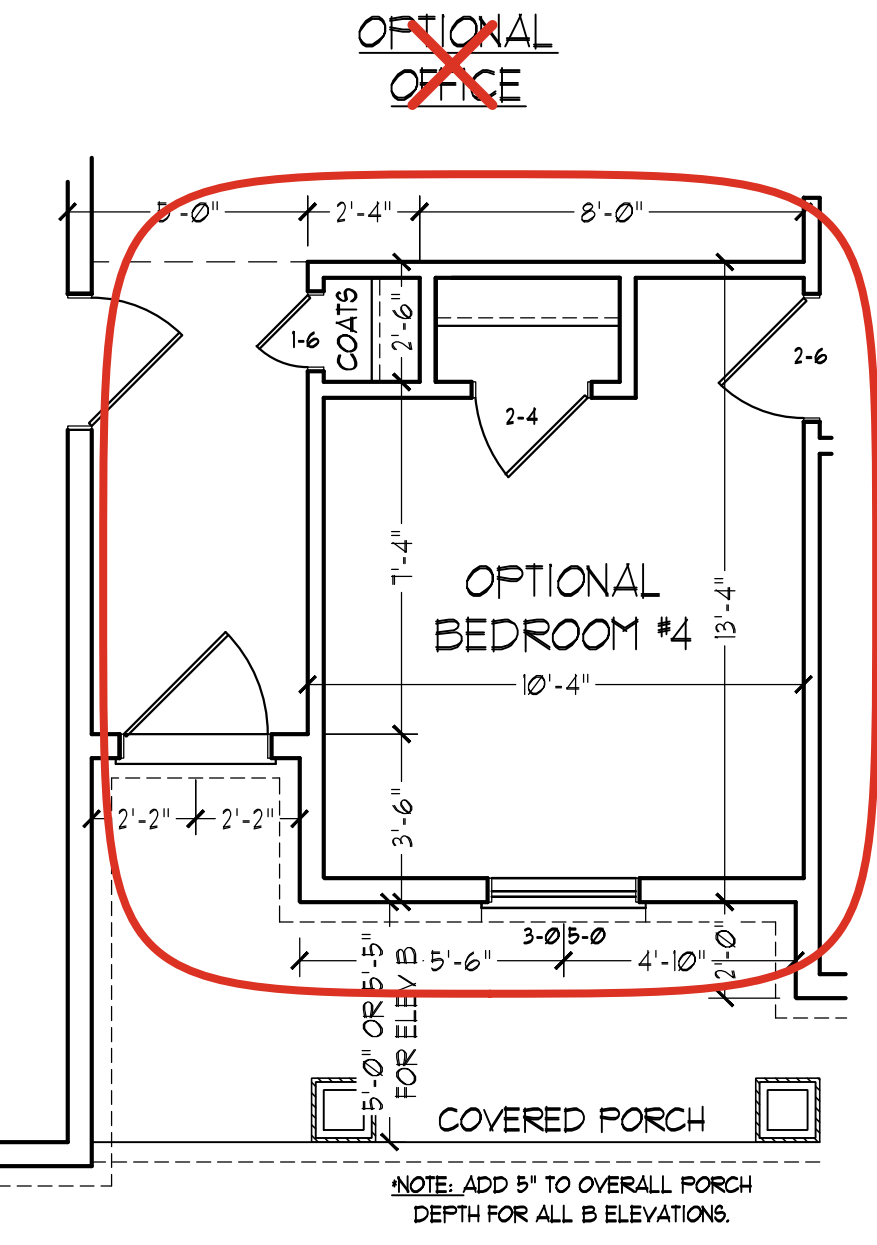
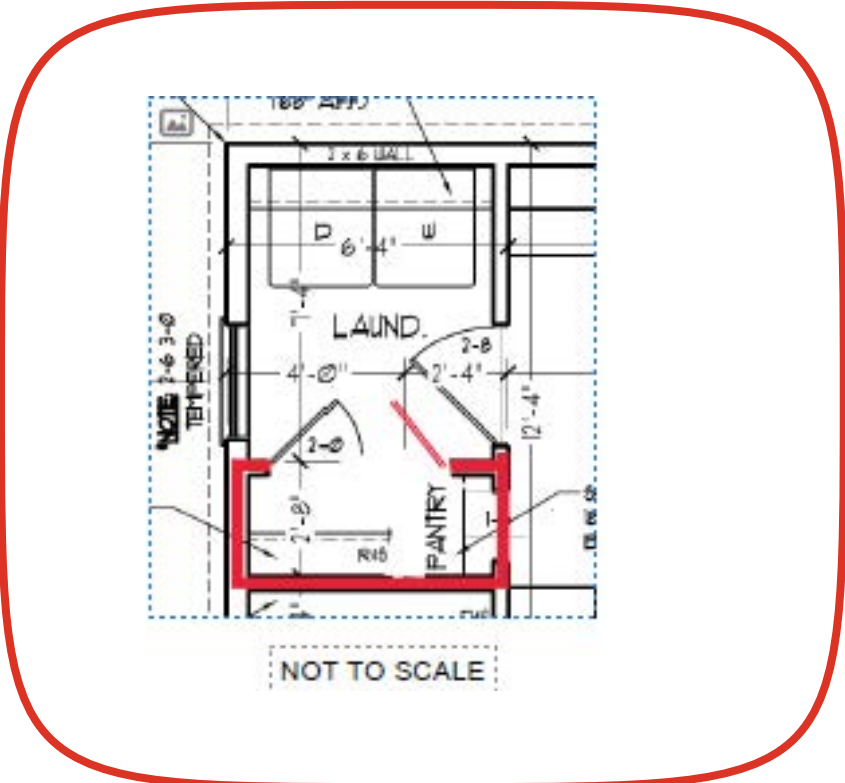
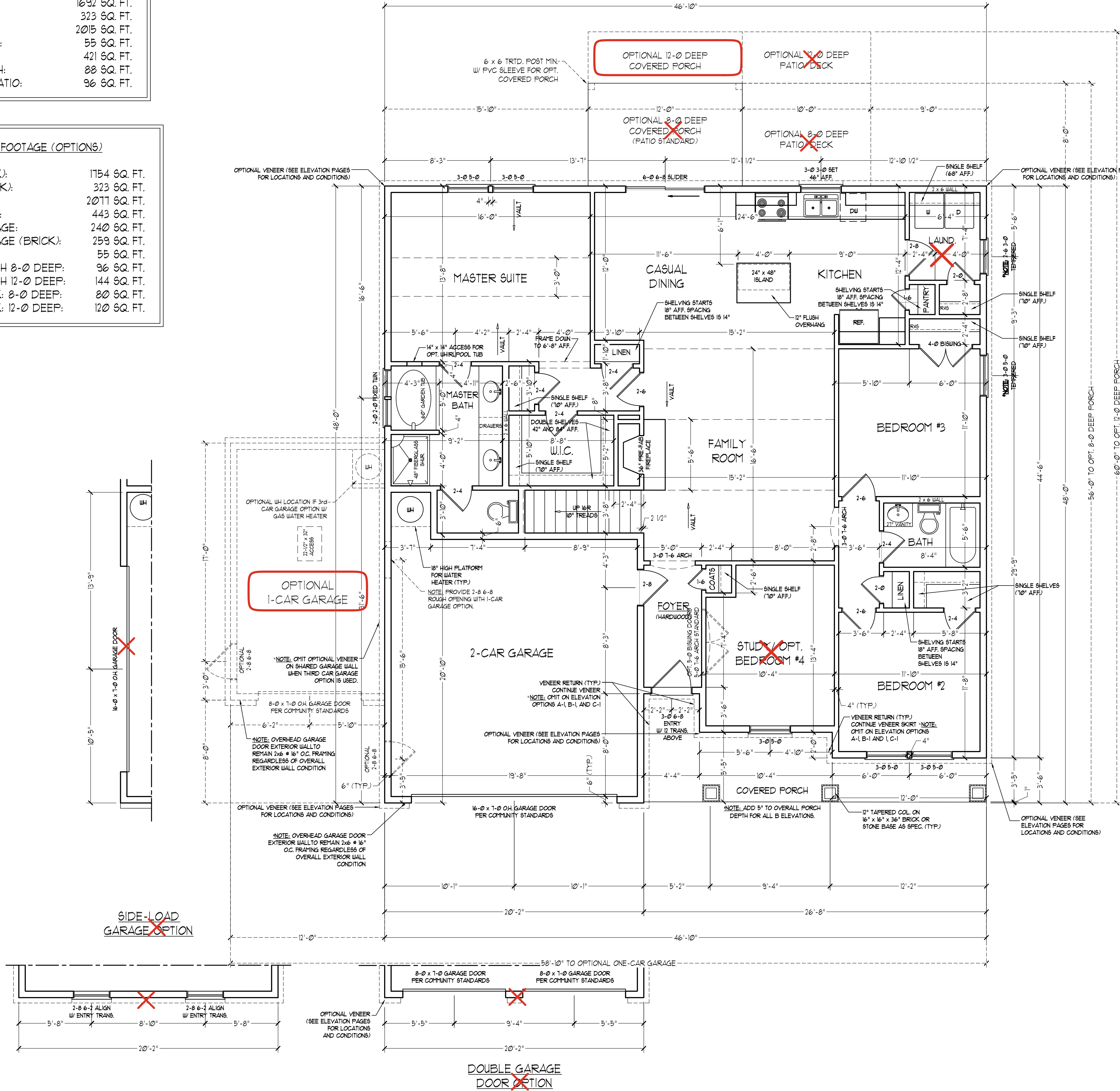
A-2

left front 3 car garage  
rear covered porch 12'  
full front porch  
rec with full bath  
4th bedroom option - frame  
door header for study too  
expanded pantry option



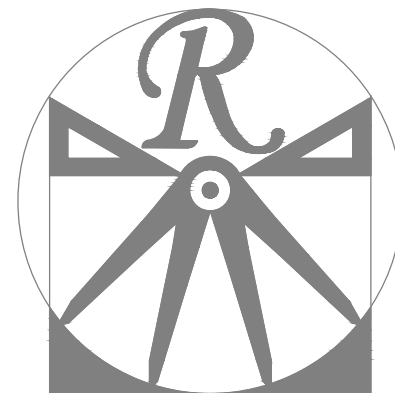
SQUARE FOOTAGE	
1st FLOOR:	1692 SQ. FT.
2nd FLOOR:	323 SQ. FT.
TOTAL:	2015 SQ. FT.
OPT. 9F BATH:	55 SQ. FT.
GARAGE:	421 SQ. FT.
FRONT PORCH:	88 SQ. FT.
STD. REAR PATIO:	96 SQ. FT.

SQUARE FOOTAGE (OPTIONS)	
1st FLOOR (BRICK):	1754 SQ. FT.
2nd FLOOR (BRICK):	323 SQ. FT.
TOTAL (BRICK):	2077 SQ. FT.
GARAGE (BRICK):	443 SQ. FT.
OPT. 1-CAR GARAGE:	240 SQ. FT.
OPT. 1-CAR GARAGE (BRICK):	259 SQ. FT.
OPT. 9F BATH:	55 SQ. FT.
OPT. REAR PORCH 8'-0" DEEP:	96 SQ. FT.
OPT. REAR PORCH 12'-0" DEEP:	144 SQ. FT.
OPT. PATIO/DECK: 8'-0" DEEP:	80 SQ. FT.
OPT. PATIO/DECK: 12'-0" DEEP:	120 SQ. FT.



\*NOTE: ALL EXTERIOR WALLS AND ATTIC WALLS ARE TO BE 2 x 6 @ 16" O.C. (UNO). 2 x 4 @ 16" O.C. EXTERIOR WALLS MAY BE CONSTRUCTED IN LIEU OF 2 x 6 WALLS (UNO). ALL INTERIOR LOAD BEARING WALLS ARE TO BE 2 x 4 @ 16" O.C. (UNO) AND NON-LOAD BEARING INTERIOR WALLS ARE TO BE 2 x 4 @ 24" O.C. (UNO).

2x6 WALL  
\* SHADED WALLS ARE TO BE 2 x 6 @ 16" O.C. (LOAD BEARING) OR 2 x 6 @ 24" O.C. (NON-LOAD BEARING) REGARDLESS OF EXTERIOR WALL CONDITION



RENAISSANCE  
RESIDENTIAL DESIGN, INC.  
RALEIGH, NC 27612

WWW.RRDCAROLINA.COM

"The art of transforming your vision into reality."

RENAISSANCE RESIDENTIAL DESIGN, INC. HEREBY EXPRESSLY RESERVES ITS COMMON LAW COPYRIGHT AND OTHER PROPERTY RIGHTS IN THESE PLANS. THESE PLANS AND DRAWINGS ARE NOT TO BE REPRODUCED, CHANGED, OR COPIED IN ANY FORM OR MANNER WITHOUT FIRST OBTAINING THE EXPRESS WRITTEN CONSENT OF RENAISSANCE RESIDENTIAL DESIGN, INC. NOR ARE THEY TO BE ASSIGNED TO ANY THIRD PARTY WITHOUT FIRST OBTAINING SAID WRITTEN PERMISSION AND CONSENT.

RENAISSANCE RESIDENTIAL DESIGN, INC. HEREBY EXPRESSLY RESERVES ITS COMMON LAW COPYRIGHT AND OTHER PROPERTY RIGHTS IN THESE PLANS. THESE PLANS AND DRAWINGS ARE NOT TO BE REPRODUCED, CHANGED, OR COPIED IN ANY FORM OR MANNER WITHOUT FIRST OBTAINING THE EXPRESS WRITTEN CONSENT OF RENAISSANCE RESIDENTIAL DESIGN, INC. NOR ARE THEY TO BE ASSIGNED TO ANY THIRD PARTY WITHOUT FIRST OBTAINING SAID WRITTEN PERMISSION AND CONSENT.

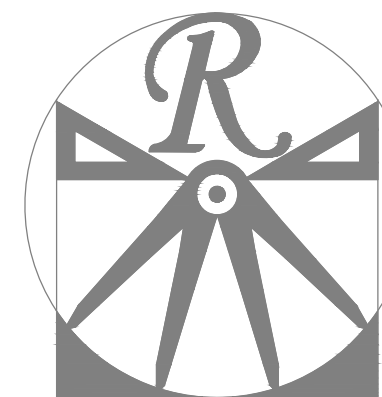


PRICES, PROMOTIONS, INCENTIVES, FEATURES, OPTIONS, AND ELEVATIONS ARE SUBJECT TO CHANGE WITHOUT NOTICE. SQUARE FOOTAGE AND DIMENSIONS ARE ESTIMATED AND MAY VARY IN ACTUAL CONSTRUCTION. ACTUAL POSITION OF HOUSE ON LOT WILL BE DETERMINED BY THE SITE PLAN AND PLAT PLAN. FLOOR PLANS AND ELEVATION DRAWINGS ARE COPYRIGHTED PROPERTY OF ONSITE HOMES, INC. ANY REPRODUCTION, ADAPTATION, OR DISPLAY OF THE PLANS IS STRICTLY PROHIBITED. SEE NEW HOME SALES CONSULTANT FOR CURRENT DETAILS. COPYRIGHT 2017 ONSITE HOMES

ONSITE HOMES, INC.  
CUMBERLAND  
LOT #12 JAMES FARM

DATE: FEBRUARY 8, 2021  
REV.:  
SCALE: 1/4"=1'-0"  
DRAWN BY: WG  
ENGINEERED BY:  
REVIEWED BY:

FIRST FLOOR  
PLAN  
A-4



RENAISSANCE

RESIDENTIAL DESIGN, INC.

0191 848-4128

WWW.RRDCAROLINA.COM

"The art of transforming your vision into reality."

RENAISSANCE RESIDENTIAL DESIGN, INC. RESERVES THE RIGHT TO MAKE MODIFICATIONS TO FLOOR PLANS, DIMENSIONS, MATERIALS, AND SPECIFICATIONS WITHOUT NOTICE. THESE DRAWINGS ARE FOR THE PURPOSE OF CONVEYING AN ARCHITECTURAL CONCEPT ONLY.

RENAISSANCE RESIDENTIAL DESIGN, INC. HEREBY EXPRESSLY RESERVES ITS COMMON LAW COPYRIGHT AND OTHER PROPERTY RIGHTS IN THESE PLANS. THESE PLANS AND DRAWINGS ARE NOT TO BE REPRODUCED, CHANGED, OR COPIED IN ANY FORM OR MANNER WITHOUT FIRST OBTAINING THE EXPRESS WRITTEN CONSENT OF RENAISSANCE RESIDENTIAL DESIGN, INC. NOR ARE THEY TO BE ASSIGNED TO ANY THIRD PARTY WITHOUT FIRST OBTAINING SAID WRITTEN PERMISSION AND CONSENT.



PRICES, PROMOTIONS, INCENTIVES, FEATURES, OPTIONS, FINISHES, ELEVATIONS, DESIGN, MATERIALS, AND DIMENSIONS ARE SUBJECT TO CHANGE WITHOUT NOTICE. SQUARE FOOTAGE AND DIMENSIONS ARE ESTIMATED AND MAY VARY IN ACTUAL CONSTRUCTION. ACTUAL POSITION OF HOUSE ON LOT WILL BE DETERMINED BY THE SITE PLAN AND PLOT PLAN. FLOOR PLANS AND ELEVATION RENDERINGS ARE COPYRIGHTED PROPERTY OF ONSITE HOMES. ANY USE, REPRODUCTION, ADAPTATION, OR DISPLAY OF THE PLANS IS STRICTLY PROHIBITED. SEE NEW HOME SALES CONSULTANT FOR CURRENT DETAILS. COPYRIGHT 2017 ONSITE HOMES

ONSITE HOMES, INC.  
CUMBERLAND  
DRIVE LEFT

DATE: SEPTEMBER 27, 2019

REV.:

SCALE: 1/4"=1'-0"

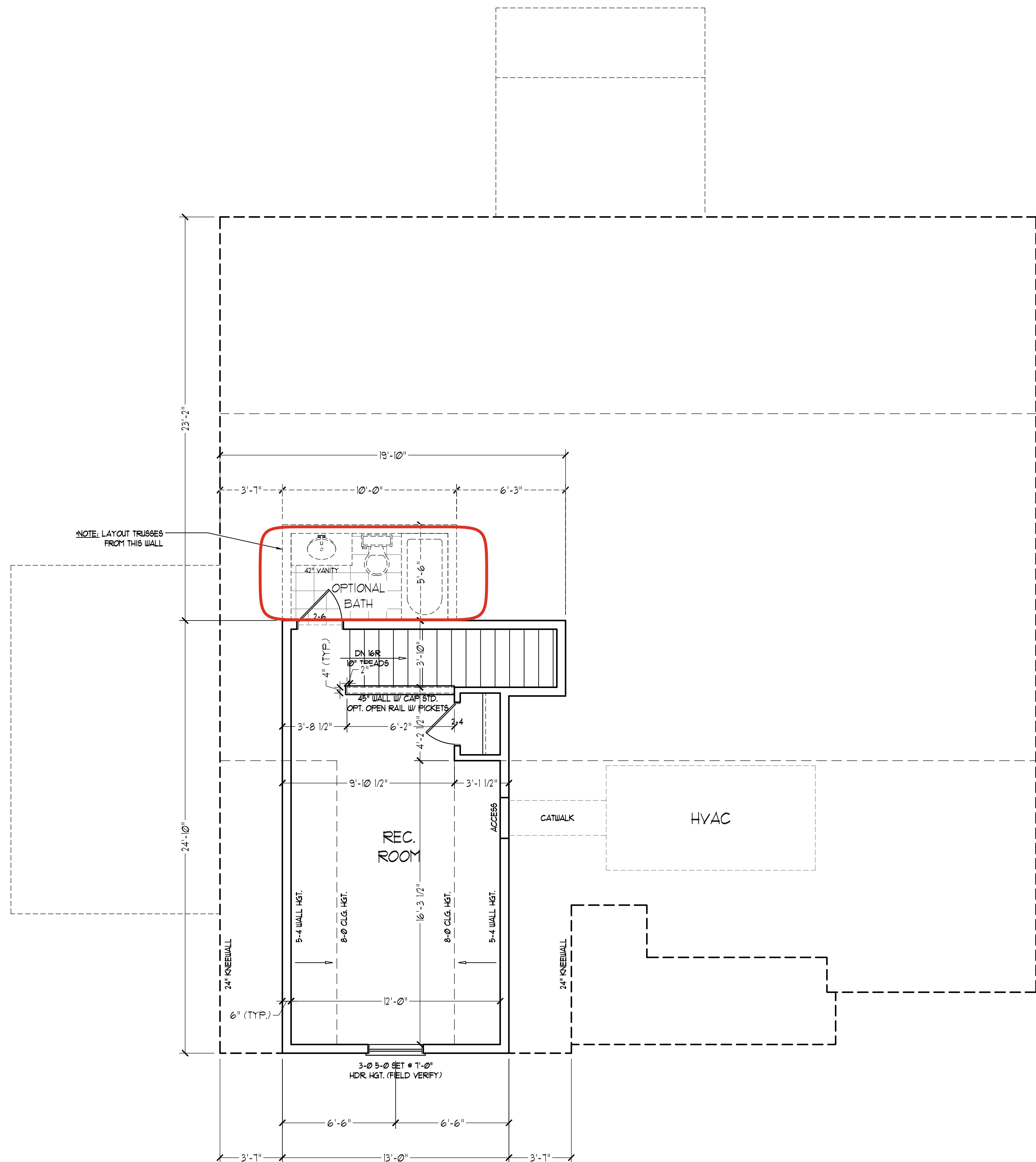
DRAWN BY: WG

ENGINEERED BY:

REVIEWED BY:

SECOND FLOOR  
PLAN

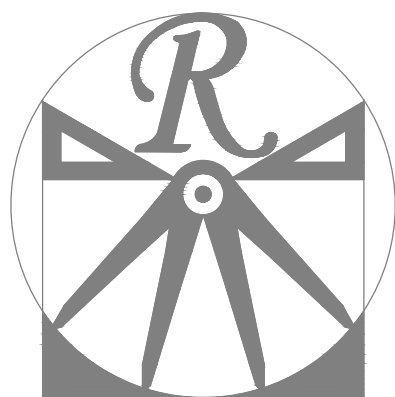
A-5



\*NOTE: ALL EXTERIOR WALLS AND ATTIC WALLS ARE TO BE 2 x 6 @ 16" O.C. (UNO). 2 x 4 @ 16" O.C. EXTERIOR WALLS MAY BE CONSTRUCTED IN LIEU OF 2 x 6 WALLS (UNO). ALL INTERIOR LOAD BEARING WALLS ARE TO BE 2 x 4 @ 16" O.C. (UNO) AND NON-LOAD BEARING INTERIOR WALLS ARE TO BE 2 x 4 @ 24" O.C. (UNO).

2x6 WALL

\* SHADED WALLS ARE TO BE 2 x 6 @ 16" O.C. (LOAD BEARING) OR 2 x 6 @ 24" O.C. (NON-LOAD BEARING) REGARDLESS OF EXTERIOR WALL CONDITION



RENAISSANCE  
RESIDENTIAL DESIGN, INC.

0191 848-4128  
RALEIGH, NC 27612

WWW.RRD-CAROLINA.COM

"The art of transforming your vision into reality."

RENAISSANCE RESIDENTIAL DESIGN, INC.  
RESERVES THE RIGHT TO MAKE  
MODIFICATIONS TO FLOOR PLANS,  
DIMENSIONS, MATERIALS, AND  
SPECIFICATIONS WITHOUT NOTICE.  
THESE DRAWINGS ARE FOR THE  
PURPOSE OF CONVEYING AN  
ARCHITECTURAL CONCEPT ONLY.

RENAISSANCE RESIDENTIAL DESIGN, INC.  
HEREBY EXPRESSLY RESERVES ITS  
COMMON LAW COPYRIGHT AND OTHER  
PROPERTY RIGHTS IN THESE PLANS.  
THESE PLANS AND DRAWINGS ARE NOT  
TO BE REPRODUCED, CHANGED, OR  
COPIED IN ANY FORM OR MANNER  
WITHOUT FIRST OBTAINING THE EXPRESS  
WRITTEN CONSENT OF RENAISSANCE  
RESIDENTIAL DESIGN, INC. NOR ARE  
THEY TO BE ASSIGNED TO ANY THIRD  
PARTY WITHOUT FIRST OBTAINING SAID  
WRITTEN PERMISSION AND CONSENT.



PRICES, PROMOTIONS, INCENTIVES, FEATURES, OPTIONS,  
FINISHES, ELEVATIONS, DESIGN, MATERIALS, AND  
DIMENSIONS ARE SUBJECT TO CHANGE WITHOUT NOTICE.  
SQUARE FOOTAGE AND DIMENSIONS ARE ESTIMATED AND  
MAY VARY IN ACTUAL CONSTRUCTION. ACTUAL POSITION OF  
HOUSE ON LOT WILL BE DETERMINED BY THE SITE PLAN AND  
PLAT PLAN. FLOOR PLANS AND ELEVATION RENDERINGS ARE  
FOR INFORMATION ONLY. ON-SITE HOMES, INC. IS NOT  
RESPONSIBLE FOR ANY REPRODUCTION, ADAPTATION, OR  
REPRODUCTION OF THESE PLANS OR ANY USE THEREOF.  
STRICTLY PROHIBITED. SEE NEW HOME SALES CONSULTANT  
FOR CURRENT DETAILS. COPYRIGHT 2017 ONSITE HOMES

ONSITE HOMES, INC.  
CUMBERLAND  
LOT #12 JAMES FARM

DATE: FEBRUARY 8, 2021

REV.:

SCALE: 1/4"=1'-0"

DRAWN BY: WG

ENGINEERED BY:

REVIEWED BY:

MONO SLAB  
FOUNDATION  
PLAN

S-1

