



PRELIMINARY PLOT PLAN FOR

MUNGO HOMES

LOT 4, LEANDER LEE PRESERVE SUBDIVISION

91 THOMAS TRAIL

REF: P.B. 2025, PG. 267

LILLINGTON TOWNSHIP

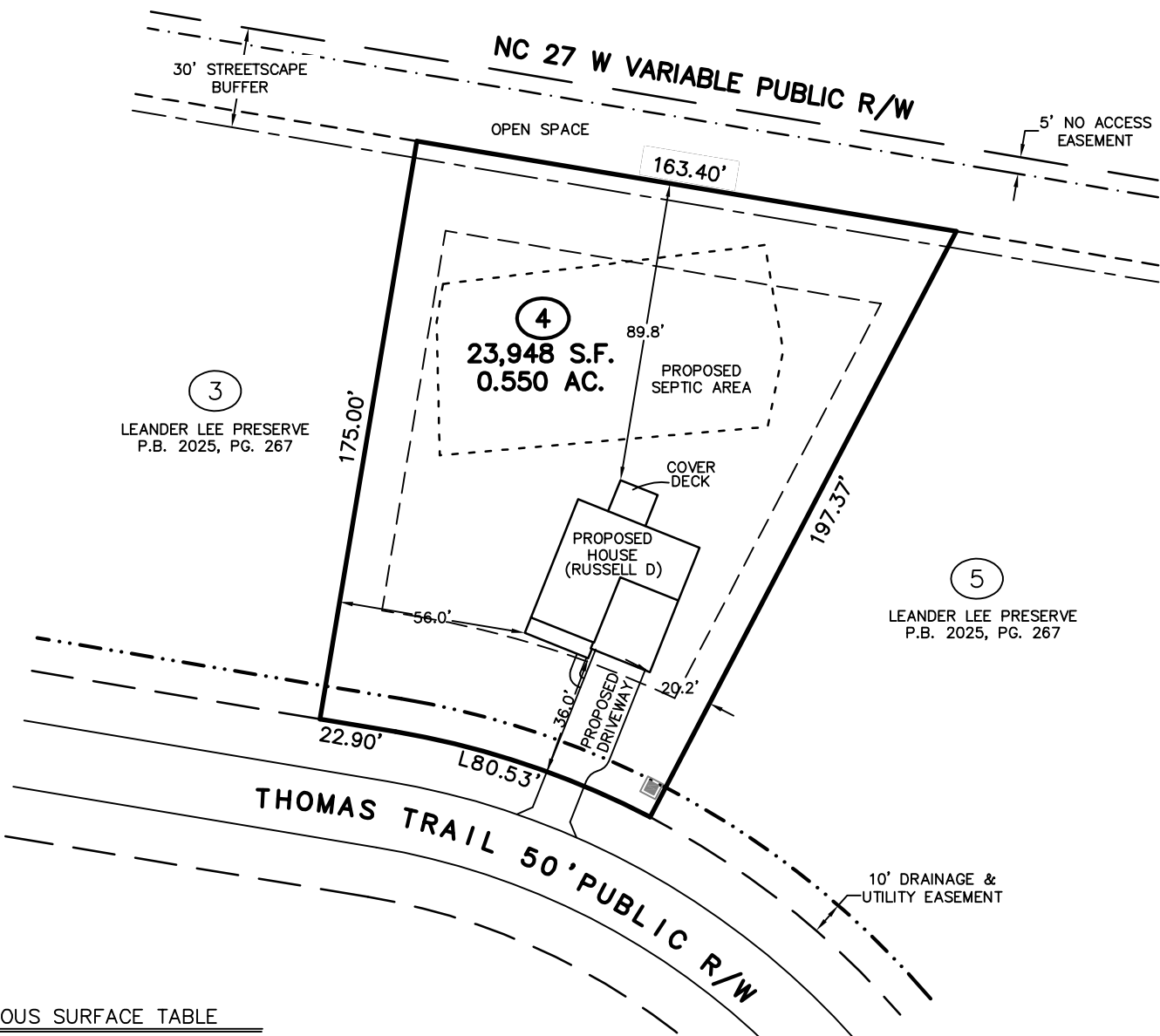
HARNETT COUNTY, NORTH CAROLINA

JUNE 24, 2025

ZONED RA-20R



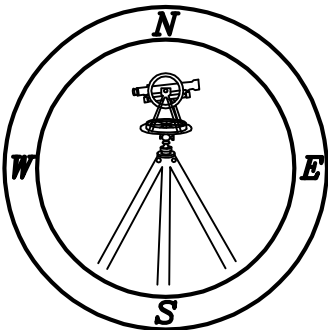
SCALE 1"=50'



IMPERVIOUS SURFACE TABLE	
HOUSE	1,621 S.F.
DECK	120 S.F.
DRIVEWAY	600 S.F.
SIDEWALKS	29 S.F.
MISC/UTILITIES	9 S.F.
TOTAL IMPERVIOUS AREA	2,379 S.F.
TOTAL LOT AREA	23,948 S.F.
PERCENTAGE OF IMPERVIOUS AREA	9.93 %

TOTAL CONCRETE & LANDSCAPE	
CONCRETE	821 S.F.
LANDSCAPE	22,902 S.F.

THIS SURVEYOR DOES NOT WARRANTY THE ACCURACY OF ARCHITECTURAL DIMENSIONS. THEY ARE TO BE VERIFIED BY THE CONTRACTOR.



Professional Land Surveyors
C-1525
333 S. White Street
Post Office Box 1253
Wake Forest, N.C. 27588
(919)556-3148

NOTES:
-THIS PLAN DOES NOT REFLECT AN ACTUAL SURVEY. IT IS A PRELIMINARY PLAN AND SHOULD BE USED FOR ITS INTENDED PURPOSE ONLY.
-NOT FOR RECORDATION, CONVEYANCES, OR SALES.