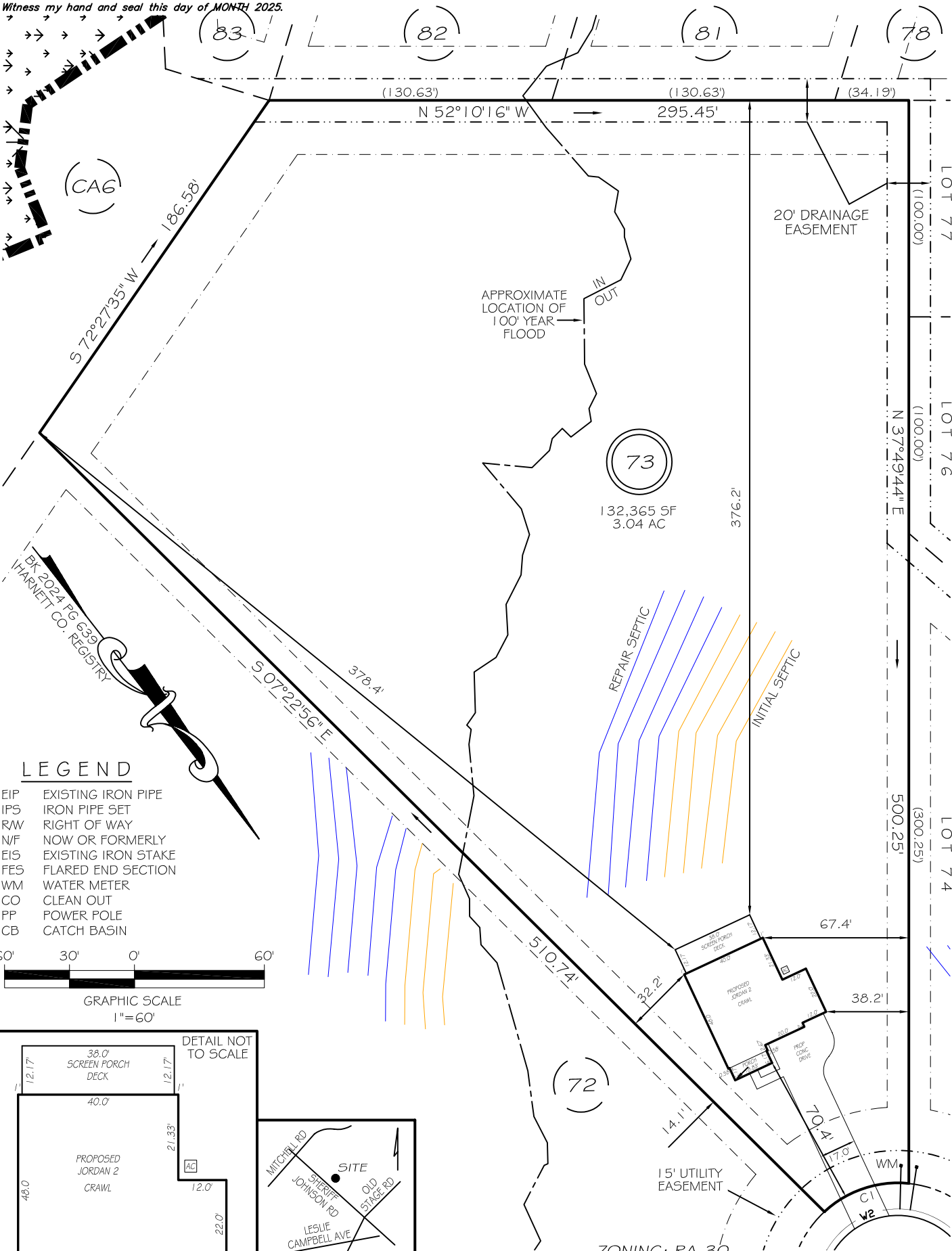
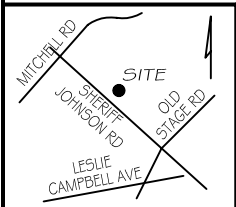
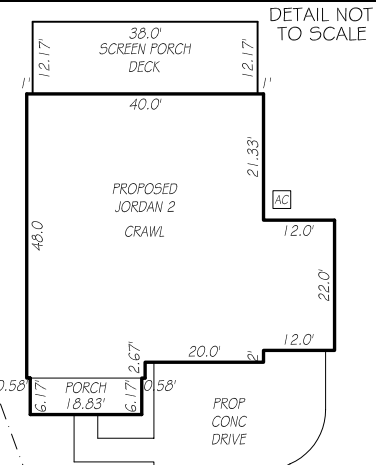
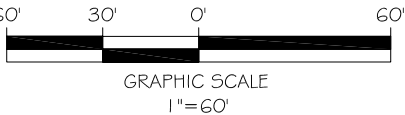


I, MICHAEL P. GRIFFIN, certify that under my direction and supervision this map was drawn from an actual field survey; that the error of closure of the survey as calculated by coordinates is 1: 10,000+; that the area shown hereon was calculated by coordinates. Dashed lines shown hereon were not surveyed.

Witness my hand and seal this day of MONTH 2025.



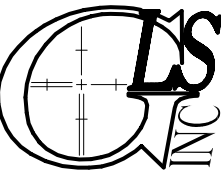
- LEGEND
- EIP EXISTING IRON PIPE
  - IPS IRON PIPE SET
  - R/W RIGHT OF WAY
  - N/F NOW OR FORMERLY
  - EIS EXISTING IRON STAKE
  - FES FLARED END SECTION
  - WM WATER METER
  - CO CLEAN OUT
  - PP POWER POLE
  - CB CATCH BASIN



**PRELIMINARY**  
NOT FOR RECORDATION,  
SALES OR CONVEYANCE

ZONING: RA-30  
SETBACKS  
FRONT 35'  
REAR 25'  
SIDE 10'  
CORNER SIDE 20'

BISCAYNE COURT  
50' RW (PUBLIC & UTILITY ACCESS)



GRIFFIN LAND SURVEYING, INC.

P. O. BOX 148  
FUQUAY-VARINA, NC 27526  
(919) - 567-1963

FIRM LIC.# C-1345

DRAWN BY **KDF**

DATE **10/30/25**

CHECKED BY **MPG**

SCALE **1" = 60'**

PLOT PLAN  
FOR

**DRB HOMES**

BLAKE POND SUBDIVISION

LOT 73

68 BISCAYNE COURT

LILLINGTON, N.C.

HARNETT COUNTY NEILL'S CREEK & GROVE TOWNSHIP