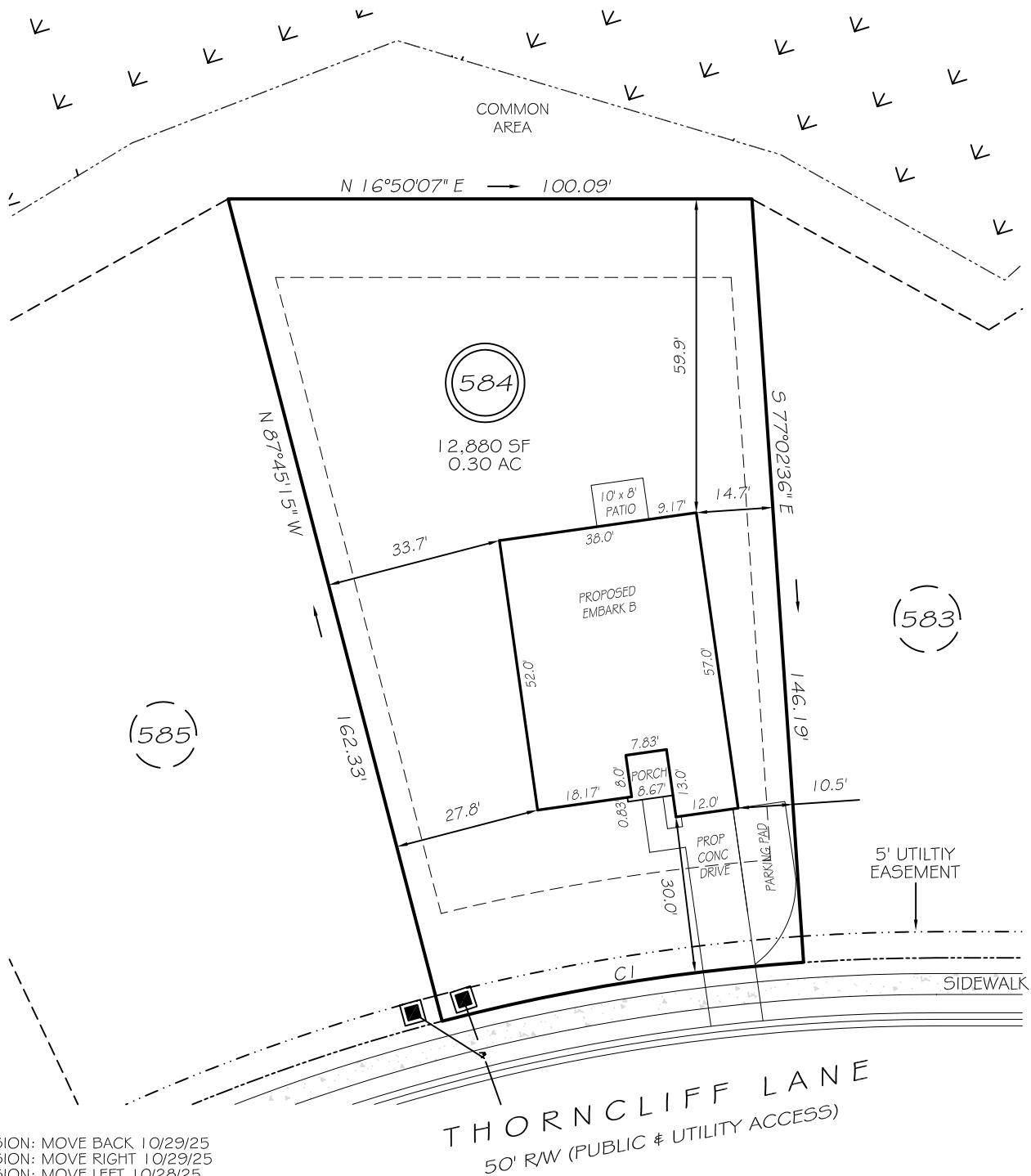


I, MICHAEL P. GRIFFIN, certify that under my direction and supervision this map was drawn from an actual field survey; that the error of closure of the survey as calculated by coordinates is 1: 10,000+; that the area shown hereon was calculated by coordinates. Dashed lines shown hereon were not surveyed.

Witness my hand and seal this day of MONTH 2025.

BK 2024 PG 512
HARNETT CO. REGISTRY

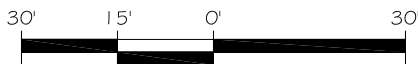


REVISION: MOVE BACK 10/29/25
REVISION: MOVE RIGHT 10/29/25
REVISION: MOVE LEFT 10/28/25

IMPERVIOUS AREAS

HOUSE	2043 SQ. FT.
DRIVE & WALKS	609 SQ. FT.
PATIO	80 SQ. FT.
TOTAL	2732 SQ. FT.
ALLOWED	3000 SQ. FT.

CI R=375.00' L=70.10' S07°36'04"W 70.00'



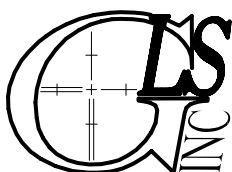
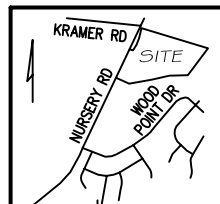
GRAPHIC SCALE
1"=30'

ZONING: RA-20R
SETBACKS
FRONT 20'
CORNER SIDE 20'
REAR 15'
SIDE 5'

LEGEND

PRELIMINARY
NOT FOR RECORDATION,
SALES OR CONVEYANCE

EIP	EXISTING IRON PIPE	FES	FLARED END SECTION
RBS	REBAR SET	WM	WATER METER
R/W	RIGHT OF WAY	CO	CLEAN OUT
N/F	NOW OR FORMERLY	FH	FIRE HYDRANT
EIS	EXISTING IRON STAKE	CB	CATCH BASIN



GRIFFIN LAND SURVEYING, INC.

P. O. BOX 148
FUQUAY-VARINA, NC 27526
(919) - 567 - 1963

FIRM LIC.# C-1345

PLOT PLAN
FOR

DREAM FINDERS HOMES LLC

CREEKSIDE OAKS
NORTH SUBDIVISION
LOT 584

THORNCLIFF LANE
LILLINGTON, N.C.

HARNETT COUNTY ANDERSON CREEK TOWNSHIP

DRAWN BY KDF

DATE 10/14/25

CHECKED BY MPG

SCALE 1" = 30'