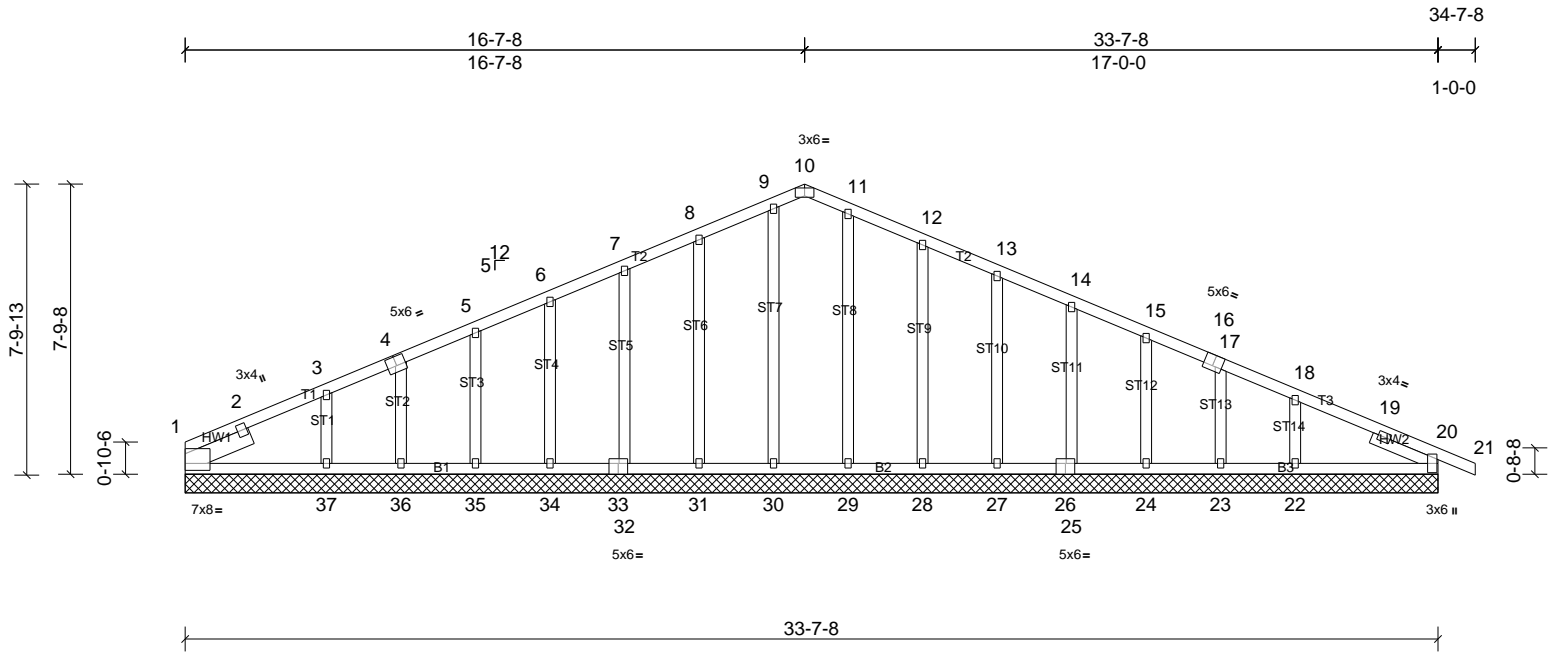


Job	Truss	Truss Type	Qty	Ply	MUNGO HOMES - MCDOWELL C ROOF
72511505	A1G	Common Supported Gable	1	1	Job Reference (optional)

UFP Mid Atlantic LLC, 5631 S. NC 62, Burlington, NC, Joy Perry

Run: 8.83 S Apr 11 2025 Print: 8.830 S Apr 11 2025 MiTek Industries, Inc. Tue Oct 28 11:42:40
ID:dRTQ7G9VuEtPClr9spvyHoyxARL-jwi1DLaZFiZR?VJpUY6ukZMUv2ZYg38uOzNEeMyOvUD

Page: 1



Loading	(psf)	Spacing	2-0-0	CSI	DEFL	in	(loc)	I/defl	L/d	PLATES	GRIP
TCLL (roof)	20.0	Plate Grip DOL	1.15	TC	0.14	Vert(LL)	n/a	-	n/a	999	MT20
TCDL	10.0	Lumber DOL	1.15	BC	0.09	Vert(CT)	n/a	-	n/a	999	244/190
BCLL	0.0*	Rep Stress Incr	YES	WB	0.10	Horz(CT)	0.01	20	n/a	n/a	
BCDL	10.0	Code	IRC2015/TPI2014	Matrix-MSH							Weight: 204 lb FT = 20%

LUMBER
TOP CHORD 2x4 SP No.2
BOT CHORD 2x4 SP No.2
OTHERS 2x4 SP No.3
SLIDER Left 2x6 SP No.2 -- 1-11-0, Right 2x4 SP No.3 -- 1-11-0

BRACING
TOP CHORD Structural wood sheathing directly applied or 6-0-0 oc purlins.
BOT CHORD Rigid ceiling directly applied or 10-0-0 oc bracing.

REACTIONS All bearings 33-7-8.
(lb) - Max Horiz 1=142 (LC 11)
Max Uplift All uplift 100 (lb) or less at joint(s) 1, 20, 23, 24, 25, 27, 28, 31, 32, 34, 35, 36 except 22=110 (LC 11), 37=123 (LC 10)
Max Grav All reactions 250 (lb) or less at joint (s) 1, 20, 23, 24, 25, 27, 28, 29, 30, 31, 32, 34, 35, 36 except 22=287 (LC 22), 37=283 (LC 21)

FORCES (lb) - Max. Comp./Max. Ten. - All forces 250 (lb) or less except when shown.

- NOTES**
- Unbalanced roof live loads have been considered for this design.
 - Wind: ASCE 7-10; Vult=130mph (3-second gust) Vasd=103mph; TCDL=6.0psf; BCDL=6.0psf; h=35ft; Cat. II; Exp B; Enclosed; MWFRS (envelope) exterior zone and C-C Exterior (2) zone; cantilever left and right exposed; end vertical left and right exposed; C-C for members and forces & MWFRS for reactions shown; Lumber DOL=1.60 plate grip DOL=1.60
 - Truss designed for wind loads in the plane of the truss only.
 - All plates are 2x3 (||) MT20 unless otherwise indicated.
 - Gable requires continuous bottom chord bearing.
 - Gable studs spaced at 2-0-0 oc.
 - This truss has been designed for a 10.0 psf bottom chord live load nonconcurrent with any other live loads.
 - * This truss has been designed for a live load of 20.0psf on the bottom chord in all areas where a rectangle 3-06-00 tall by 2-00-00 wide will fit between the bottom chord and any other members.

- Provide mechanical connection (by others) of truss to bearing plate capable of withstanding 100 lb uplift at joint (s) 1, 20, 31, 32, 34, 35, 36, 28, 27, 25, 24, 23, 1, 20 except (jt=lb) 37=122, 22=109.
- This truss is designed in accordance with the 2015 International Residential Code sections R502.11.1 and R802.10.2 and referenced standard ANSI/TPI 1.



This design is based upon parameters shown, and is for an individual building component to be installed and loaded vertically. Applicability of design parameters and proper incorporation of component is responsibility of the Building Designer. Building Designer shall verify all design information on this sheet for conformance with conditions and requirements of the specific building and governing codes and ordinances. Building Designer accepts responsibility for the correctness or accuracy of the design information as it may relate to a specific building. Certification is valid only when truss is fabricated by a UFPI plant. Bracing shown is for lateral support of truss members only and does not replace erection and permanent bracing. Refer to Building Component Safety Information (BCSI) for general guidance regarding storage, erection and bracing available from SBCA and Truss Plate Institute.



UFP Mid Atlantic LLC, 5631 S. NC 62, Burlington, NC, Joy Perry Run: 8.83 S Apr 11 2025 Print: 8.830 S Apr 11 2025 MiTek Industries, Inc. Tue Oct 28 11:42:41 Page: 1

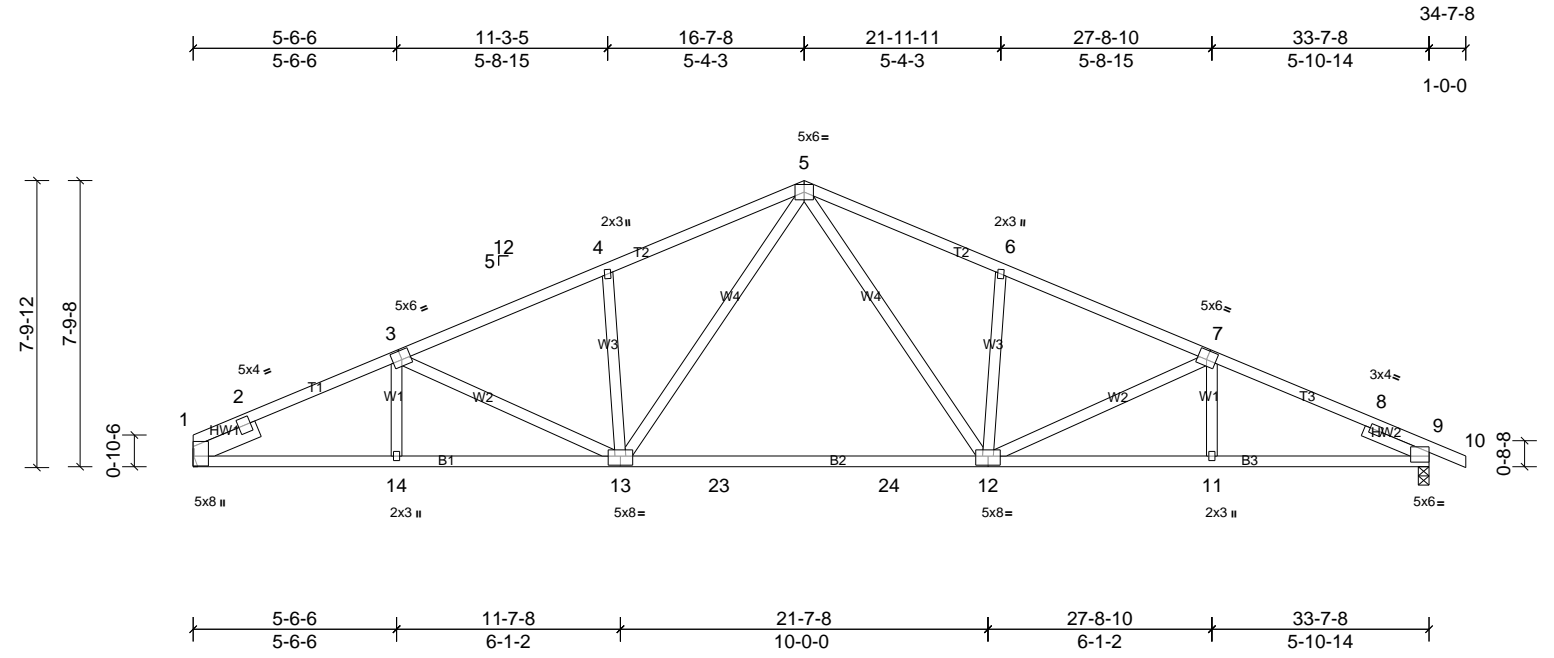


Job	Truss	Truss Type	Qty	Ply	MUNGO HOMES - MCDOWELL C ROOF
72511505	A2	COMMON	1	1	Job Reference (optional)

UFPI Mid Atlantic LLC, 5631 S. NC 62, Burlington, NC, Joy Perry

Run: 8.83 S Apr 11 2025 Print: 8.830 S Apr 11 2025 MiTek Industries, Inc. Tue Oct 28 11:42:42
ID:q6xmDaGgGpr4T8wcGw4bQWzKH9V-flqoe1bqnMq9EoSbCy9Mp_SeXr1S8vMBsHsLjFyOvUB

Page: 1



Loading	(psf)	Spacing	2-0-0	CSI		DEFL	in	(loc)	I/defl	L/d	PLATES	GRIP
TCLL (roof)	20.0	Plate Grip DOL	1.15	TC	0.90	Vert(LL)	-0.35	12-13	>999	240	MT20	244/190
TCDL	10.0	Lumber DOL	1.15	BC	0.90	Vert(CT)	-0.66	12-13	>615	180		
BCLL	0.0 *	Rep Stress Incr	YES	WB	0.37	Horz(CT)	0.10	9	n/a	n/a		
BCDL	10.0	Code	IRC2015/TPI2014	Matrix-MSH							Weight: 181 lb	FT = 20%

LUMBER
TOP CHORD 2x4 SP No.2 *Except* 1-3:2x4 SP No.1
BOT CHORD 2x4 SP No.1 *Except* 1-13:2x4 SP SS
WEBS 2x4 SP No.3
SLIDER Left 2x6 SP No.2 -- 1-11-0, Right 2x4 SP No.3 -- 1-11-0

BRACING
TOP CHORD Structural wood sheathing directly applied or 2-1-0 oc purlins.
BOT CHORD Rigid ceiling directly applied or 8-7-8 oc bracing.

REACTIONS (lb/size) 1=1344/ Mechanical, 9=1406/0-3-8, (min. 0-2-3)
Max Horiz 1=-141 (LC 11)
Max Uplift 1=-186 (LC 10), 9=-212 (LC 11)

FORCES (lb) - Max. Comp./Max. Ten. - All forces 250 (lb) or less except when shown.
TOP CHORD 1-2=-675/74, 2-3=-2387/646, 3-4=-2174/617, 4-5=-2178/718, 5-6=-2201/724, 6-7=-2200/624, 7-8=-2522/674, 8-9=-692/56
BOT CHORD 1-14=-483/2129, 13-14=-486/2130, 13-23=-223/1505, 23-24=-223/1505, 12-24=-223/1505, 11-12=-516/2263, 9-11=-514/2263
WEBS 4-13=-379/238, 5-13=-230/820, 5-12=-241/854, 6-12=-370/235, 7-12=-345/163

NOTES
1) Unbalanced roof live loads have been considered for this design.
2) Wind: ASCE 7-10; Vult=130mph (3-second gust) Vasd=103mph; TCDL=6.0psf; BCDL=6.0psf; h=35ft; Cat. II; Exp B; Enclosed; MWFRS (envelope) exterior zone and C-C Exterior (2) zone; cantilever left and right exposed; end vertical left and right exposed; C-C for members and forces & MWFRS for reactions shown; Lumber DOL=1.60 plate grip DOL=1.60
3) This truss has been designed for a 10.0 psf bottom chord live load nonconcurrent with any other live loads.
4) * This truss has been designed for a live load of 20.0psf on the bottom chord in all areas where a rectangle 3-06-00 tall by 2-00-00 wide will fit between the bottom chord and any other members, with BCDL = 10.0psf.

- 5) Provide mechanical connection (by others) of truss to bearing plate capable of withstanding 186 lb uplift at joint 1 and 212 lb uplift at joint 9.
- 6) This truss is designed in accordance with the 2015 International Residential Code sections R502.11.1 and R802.10.2 and referenced standard ANSI/TPI 1.

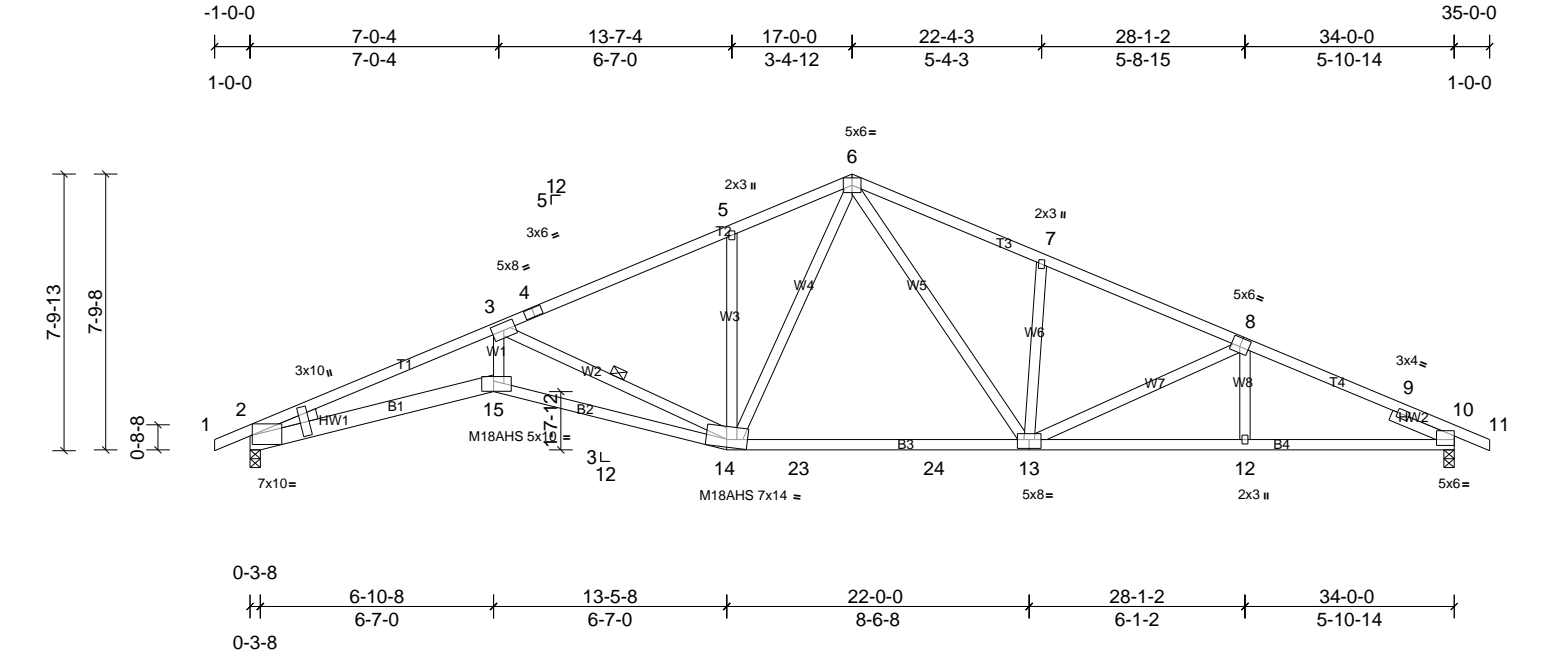


Job	Truss	Truss Type	Qty	Ply	MUNGO HOMES - MCDOWELL C ROOF
72511505	A3V	Roof Special	9	1	Job Reference (optional)

UFP Mid Atlantic LLC, 5631 S. NC 62, Burlington, NC, Joy Perry

Run: 8.83 S Apr 11 2025 Print: 8.830 S Apr 11 2025 MiTek Industries, Inc. Tue Oct 28 11:42:42
ID:q6xmDaGgPr4T8wcGw4bQWzKH9V-flqoe1bqnMq9EoSbCy9Mp_SeBr088nJBsHsLjFyOvUB

Page: 1



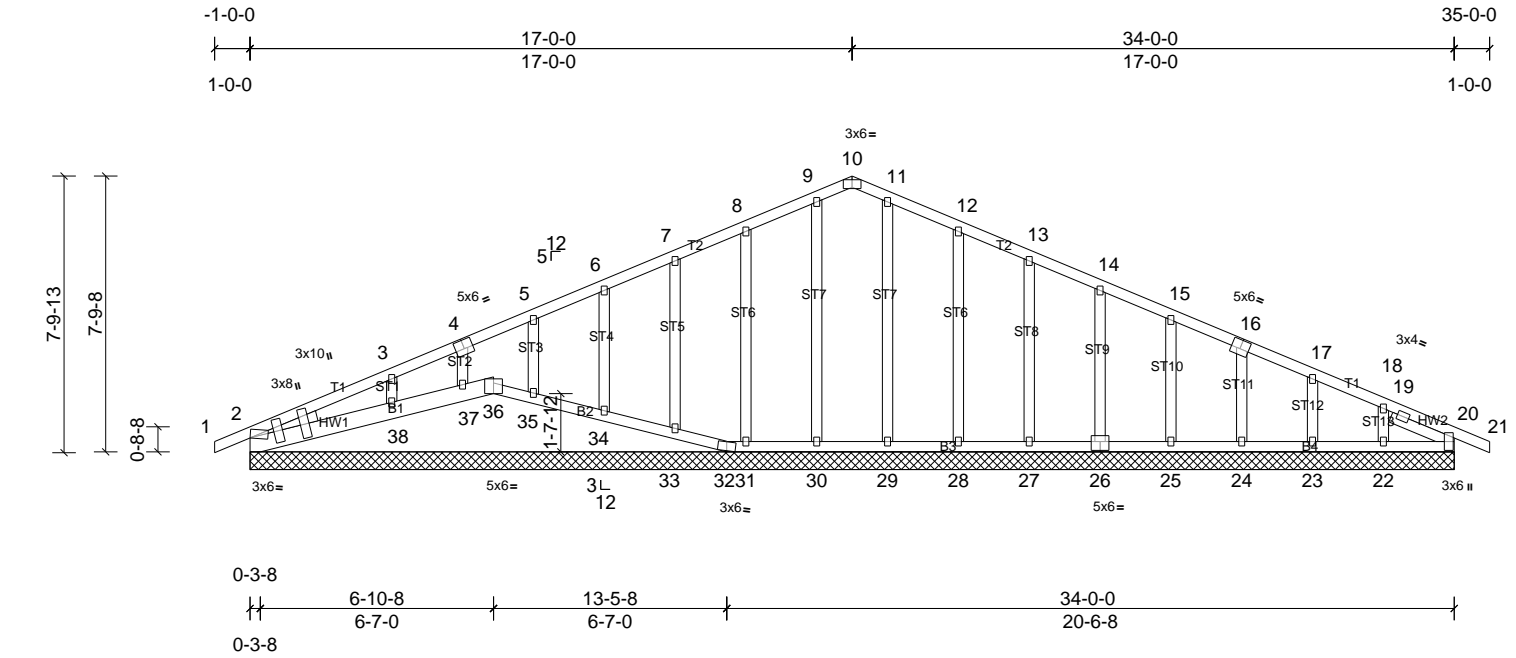
Job	Truss	Truss Type	Qty	Ply	MUNGO HOMES - MCDOWELL C ROOF
72511505	A3VG	Roof Special Supported Gable	1	1	Job Reference (optional)

UFP Mid Atlantic LLC, 5631 S. NC 62, Burlington, NC, Joy Perry

Run: 8.83 S Apr 11 2025 Print: 8.830 S Apr 11 2025 MiTek Industries, Inc. Tue Oct 28 11:42:43

Page: 1

ID:q6xmDaGgGpr4T8wcGw4bQWzKH9V-7UOArNcSYgy0sy1O9ggbMB_?_FbntPiL4wbvFhyOvUA



Loading	(psf)	Spacing	2-0-0	CSI	DEFL	in	(loc)	I/defl	L/d	PLATES	GRIP
TCLL (roof)	20.0	Plate Grip DOL	1.15	TC	0.15	Vert(LL)	n/a	-	n/a	999	MT20
TCDL	10.0	Lumber DOL	1.15	BC	0.06	Vert(CT)	n/a	-	n/a	999	244/190
BCLL	0.0*	Rep Stress Incr	YES	WB	0.11	Horz(CT)	0.01	20	n/a	n/a	
BCDL	10.0	Code	IRC2015/TPI2014	Matrix-SH							Weight: 206 lb FT = 20%

LUMBER
TOP CHORD 2x4 SP No.2
BOT CHORD 2x4 SP No.2 *Except* 2-36:2x6 SP No.2
OTHERS 2x4 SP No.3
WEDGE Left: 2x4 SP No.2
SLIDER Right 2x4 SP No.3 -- 1-11-0

BRACING
TOP CHORD Structural wood sheathing directly applied or 6-0-0 oc purlins.
BOT CHORD Rigid ceiling directly applied or 10-0-0 oc bracing, Except: 6-0-0 oc bracing: 37-38.

REACTIONS All bearings 34-0-0.
(lb) - Max Horiz 2=131 (LC 11)
Max Uplift All uplift 100 (lb) or less at joint(s) 2, 22, 23, 24, 25, 26, 27, 28, 31, 32, 33, 34, 35, 37 except 38=111 (LC 10)
Max Grav All reactions 250 (lb) or less at joint (s) 2, 20, 22, 23, 24, 25, 26, 27, 28, 29, 30, 31, 32, 33, 34, 35, 36, 37 except 38=314 (LC 21)

FORCES (lb) - Max. Comp./Max. Ten. - All forces 250 (lb) or less except when shown.

NOTES
1) Unbalanced roof live loads have been considered for this design.
2) Wind: ASCE 7-10; Vult=130mph (3-second gust) Vasd=103mph; TCDL=6.0psf; BCDL=6.0psf; h=35ft; Cat. II; Exp B; Enclosed; MWFRS (envelope) exterior zone and C-C Exterior (2) zone; cantilever left and right exposed; end vertical left and right exposed; C-C for members and forces & MWFRS for reactions shown; Lumber DOL=1.60 plate grip DOL=1.60
3) Truss designed for wind loads in the plane of the truss only.
4) All plates are 2x3 (||) MT20 unless otherwise indicated.
5) Gable requires continuous bottom chord bearing.
6) Gable studs spaced at 2-0-0 oc.
7) This truss has been designed for a 10.0 psf bottom chord live load nonconcurrent with any other live loads.

- 8) * This truss has been designed for a live load of 20.0psf on the bottom chord in all areas where a rectangle 3-06-00 tall by 2-00-00 wide will fit between the bottom chord and any other members.
9) Provide mechanical connection (by others) of truss to bearing plate capable of withstanding 100 lb uplift at joint (s) 2, 32, 31, 33, 34, 35, 37, 28, 27, 26, 25, 24, 23, 22 except (jt=lb) 38=110.
10) Beveled plate or shim required to provide full bearing surface with truss chord at joint(s) 36, 33, 34, 35, 37, 38.
11) This truss is designed in accordance with the 2015 International Residential Code sections R502.11.1 and R802.10.2 and referenced standard ANSI/TPI 1.



This design is based upon parameters shown, and is for an individual building component to be installed and loaded vertically. Applicability of design parameters and proper incorporation of component is responsibility of the Building Designer. Building Designer shall verify all design information on this sheet for conformance with conditions and requirements of the specific building and governing codes and ordinances. Building Designer accepts responsibility for the correctness or accuracy of the design information as it may relate to a specific building. Certification is valid only when truss is fabricated by a UFPI plant. Bracing shown is for lateral support of truss members only and does not replace erection and permanent bracing. Refer to Building Component Safety Information (BCSI) for general guidance regarding storage, erection and bracing available from SBCA and Truss Plate Institute.



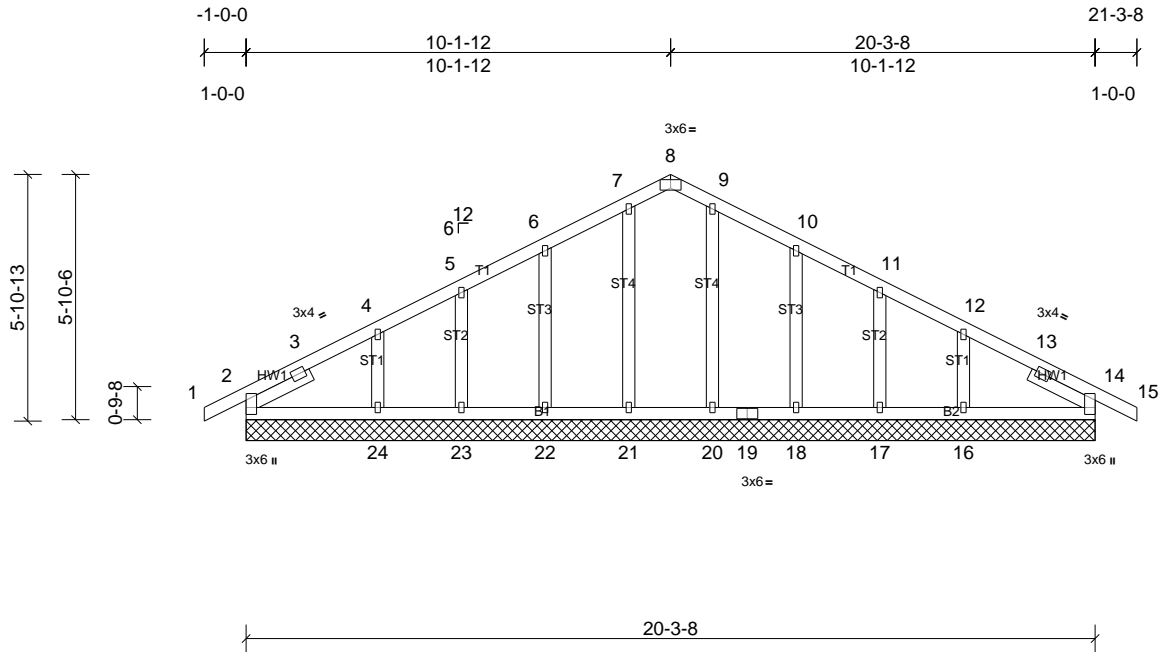
Job	Truss	Truss Type	Qty	Ply	MUNGO HOMES - MCDOWELL C ROOF
72511505	B1G	Common Supported Gable	1	1	Job Reference (optional)

UFP Mid Atlantic LLC, 5631 S. NC 62, Burlington, NC, Joy Perry

Run: 8.83 S Apr 11 2025 Print: 8.830 S Apr 11 2025 MiTek Industries, Inc. Tue Oct 28 11:42:43

Page: 1

ID:q6xmDaGgGpr4T8wcGw4bQWzKH9V-7UOArNcSYgy0sy1O9ggbMB_05FbktQhL4wbvFhyOvUA



Loading	(psf)	Spacing	2-0-0	CSI	DEFL	in	(loc)	I/defl	L/d	PLATES	GRIP
TCLL (roof)	20.0	Plate Grip DOL	1.15	TC	0.08	Vert(LL)	n/a	-	n/a	999	MT20
TCDL	10.0	Lumber DOL	1.15	BC	0.06	Vert(CT)	n/a	-	n/a	999	244/190
BCLL	0.0*	Rep Stress Incr	YES	WB	0.05	Horz(CT)	0.00	14	n/a	n/a	
BCDL	10.0	Code	IRC2015/TPI2014	Matrix-SH							Weight: 112 lb FT = 20%

LUMBER

TOP CHORD	2x4 SP No.2
BOT CHORD	2x4 SP No.2
OTHERS	2x4 SP No.3
SLIDER	Left 2x4 SP No.3 -- 1-9-1, Right 2x4 SP No.3 -- 1-9-1

BRACING

TOP CHORD	Structural wood sheathing directly applied or 6'-0-0 oc purlins.
BOT CHORD	Rigid ceiling directly applied or 10'-0-0 oc bracing.

REACTIONS

All bearings	20-3-8.
(lb) - Max Horiz	2=97 (LC 14)
Max Uplift	All uplift 100 (lb) or less at joint(s) 2, 17, 18, 22, 23 except 16=103 (LC 11), 24=109 (LC 10)
Max Grav	All reactions 250 (lb) or less at joint (s) 2, 14, 16, 17, 18, 20, 21, 22, 23, 24

FORCES

(lb) - Max. Comp./Max. Ten.	- All forces 250 (lb) or less except when shown.
-----------------------------	--

NOTES

- 1) Unbalanced roof live loads have been considered for this design.
- 2) Wind: ASCE 7-10; Vult=130mph (3-second gust) Vasd=103mph; TCDL=6.0psf; BCDL=6.0psf; h=35ft; Cat. II; Exp B; Enclosed; MWFRS (envelope) exterior zone and C-C Exterior (2) zone; cantilever left and right exposed; end vertical left and right exposed; C-C for members and forces & MWFRS for reactions shown; Lumber DOL=1.60 plate grip DOL=1.60
- 3) Truss designed for wind loads in the plane of the truss only.
- 4) All plates are 1.5x3 (||) MT20 unless otherwise indicated.
- 5) Gable studs spaced at 2'-0-0 oc.
- 6) This truss has been designed for a 10.0 psf bottom chord live load nonconcurrent with any other live loads.
- 7) * This truss has been designed for a live load of 20.0psf on the bottom chord in all areas where a rectangle 3'-06-00 tall by 2'-00-00 wide will fit between the bottom chord and any other members.

- 8) Provide mechanical connection (by others) of truss to bearing plate capable of withstanding 100 lb uplift at joint (s) 2, 22, 23, 18, 17 except (jt=lb) 24=108, 16=102.
- 9) Non Standard bearing condition. Review required.
- 10) This truss is designed in accordance with the 2015 International Residential Code sections R502.11.1 and R802.10.2 and referenced standard ANSI/TPI 1.

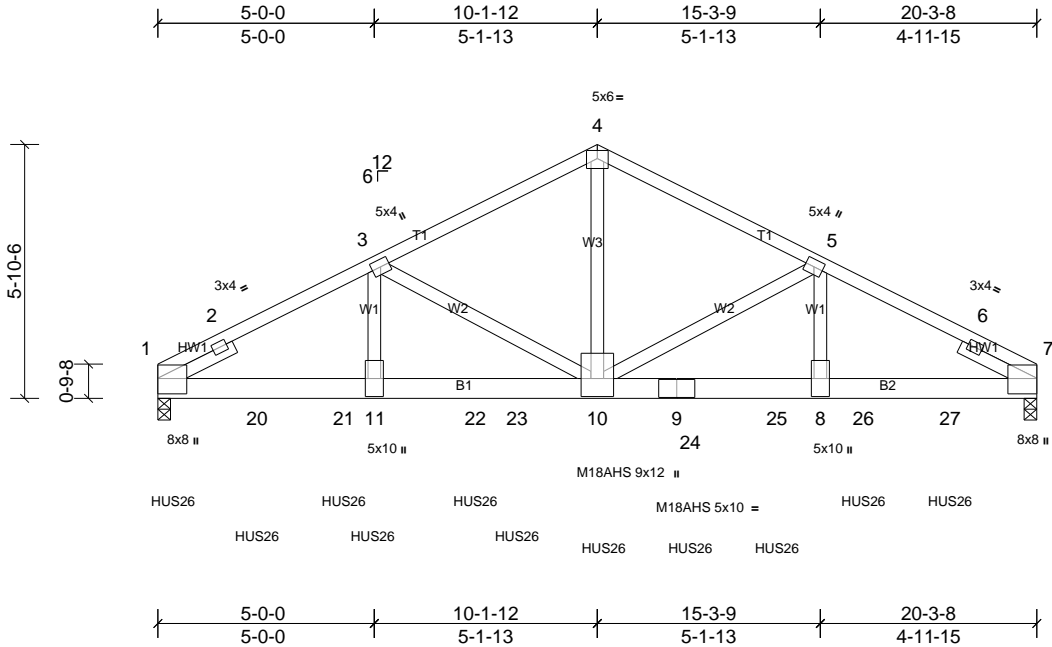


This design is based upon parameters shown, and is for an individual building component to be installed and loaded vertically. Applicability of design parameters and proper incorporation of component is responsibility of the Building Designer. Building Designer shall verify all design information on this sheet for conformance with conditions and requirements of the specific building and governing codes and ordinances. Building Designer accepts responsibility for the correctness or accuracy of the design information as it may relate to a specific building. Certification is valid only when truss is fabricated by a UFPI plant. Bracing shown is for lateral support of truss members only and does not replace erection and permanent bracing. Refer to Building Component Safety Information (BCSI) for general guidance regarding storage, erection and bracing available from SBCA and Truss Plate Institute.



Job	Truss	Truss Type	Qty	Ply	MUNGO HOMES - MCDOWELL C ROOF
72511505	B2	Common Girder	1	3	Job Reference (optional)

UFP Mid Atlantic LLC, 5631 S. NC 62, Burlington, NC, Joy Perry
 Run: 8.83 S Apr 11 2025 Print: 8.830 S Apr 11 2025 MiTek Industries, Inc. Tue Oct 28 11:42:44
 ID:q6xmDaGgGpr4T8wcGw4bQWzKH9V-bhyY2jd4Jz4tT6cajNBquPX1FfnWcjCUJaLSn7yOvU9
 Page: 1



Loading	(psf)	Spacing	2-0-0	CSI	DEFL	in	(loc)	I/defl	L/d	PLATES	GRIP
TCLL (roof)	20.0	Plate Grip DOL	1.15	TC	0.76	Vert(LL)	-0.13	10-11	>999	240	MT20 244/190
TCDL	10.0	Lumber DOL	1.15	BC	0.67	Vert(CT)	-0.27	10-11	>889	180	M18AHS 186/179
BCLL	0.0*	Rep Stress Incr	NO	WB	0.67	Horz(CT)	0.06	7	n/a	n/a	
BCDL	10.0	Code	IRC2015/TP12014	Matrix-MSH							Weight: 357 lb FT = 20%

- LUMBER**
 TOP CHORD 2x4 SP No.1
 BOT CHORD 2x6 SP SS
 WEBS 2x4 SP No.3 *Except* 10-4:2x4 SP No.2
 SLIDER Left 2x4 SP No.3 -- 1-11-0, Right 2x4 SP No.3 -- 1-11-0

BRACING
 TOP CHORD Structural wood sheathing directly applied or 5-1-3 oc purlins.
 BOT CHORD Rigid ceiling directly applied or 10-0-0 oc bracing.

REACTIONS (lb/size) 1=9381/0-3-8, (req. 0-4-14), 7=7725/0-3-8, (min. 0-3-1)
 Max Horiz 1=-89 (LC 9)
 Max Uplift 1=-1035 (LC 8), 7=-812 (LC 9)

FORCES (lb) - Max. Comp./Max. Ten. - All forces 250 (lb) or less except when shown.
 TOP CHORD 1-2=-10015/982, 2-3=-13798/1465, 3-4=-9710/1052, 4-5=-9712/1052, 5-6=-12503/1325, 6-7=-8408/843
 BOT CHORD 1-20=-1327/12212, 20-21=-1327/12212, 11-21=-1327/12212, 11-22=-1327/12212, 22-23=-1327/12212, 10-23=-1327/12212, 9-10=-1113/11058, 9-24=-1113/11058, 24-25=-1113/11058, 8-25=-1113/11058, 8-26=-1113/11058, 26-27=-1113/11058, 7-27=-1113/11058
 WEBS 3-11=-346/3828, 3-10=-4103/552, 4-10=-813/8198, 5-10=-2778/408, 5-8=-212/2586

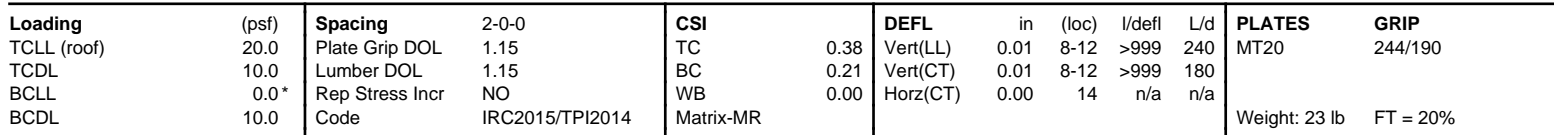
NOTES
 1) 3-ply truss to be connected together with 10d (0.131"x3") nails as follows:
 Top chords connected as follows: 2x4 - 1 row at 0-9-0 oc.
 Bottom chords connected as follows: 2x6 - 2 rows staggered at 0-5-0 oc.
 Web connected as follows: 2x4 - 1 row at 0-9-0 oc, Except member 3-11 2x4 - 2 rows staggered at 0-6-0 oc, member 4-10 2x4 - 1 row at 0-6-0 oc.

2) All loads are considered equally applied to all plies, except if noted as front (F) or back (B) face in the LOAD CASE(S) section. Ply to ply connections have been provided to distribute only loads noted as (F) or (B), unless otherwise indicated.
 3) Unbalanced roof live loads have been considered for this design.
 4) Wind: ASCE 7-10; Vult=130mph (3-second gust) Vasd=103mph; TCDL=6.0psf; BCDL=6.0psf; h=35ft; Cat. II; Exp B; Enclosed; MWFRS (envelope) exterior zone; cantilever left and right exposed ; end vertical left and right exposed; Lumber DOL=1.60 plate grip DOL=1.60

 5) All plates are MT20 plates unless otherwise indicated.
 6) This truss has been designed for a 10.0 psf bottom chord live load nonconcurrent with any other live loads.
 7) * This truss has been designed for a live load of 20.0psf on the bottom chord in all areas where a rectangle 3-06-00 tall by 2-00-00 wide will fit between the bottom chord and any other members.
 8) WARNING: Required bearing size at joint(s) 1 greater than input bearing size.
 9) Provide mechanical connection (by others) of truss to bearing plate capable of withstanding 1035 lb uplift at joint 1 and 812 lb uplift at joint 7.
 10) This truss is designed in accordance with the 2015 International Residential Code sections R502.11.1 and R802.10.2 and referenced standard ANSI/TP1 1.
 11) Use Simpson Strong-Tie HUS26 (14-10d Girder, 4-10d Truss) or equivalent spaced at 2-4-8 oc max. starting at 0-4-4 from the left end to 18-3-8 to connect truss(es) A2 (1 ply 2x4 SP), A1S (1 ply 2x4 SP) to front face of bottom chord.
 12) Fill all nail holes where hanger is in contact with lumber.
LOAD CASE(S) Standard
 1) Dead + Roof Live (balanced): Lumber Increase=1.15, Plate Increase=1.15
 Uniform Loads (lb/ft)
 Vert: 1-4=-60, 4-7=-60, 12-16=-20
 Concentrated Loads (lb)
 Vert: 11=-1415 (F), 10=-1415 (F), 14=-1331 (F), 20=-1415 (F), 21=-1415 (F), 22=-1415 (F), 23=-1415 (F), 24=-1415 (F), 25=-1415 (F), 26=-1415 (F), 27=-1415 (F)



UFP Mid Atlantic LLC, 5631 S. NC 62, Burlington, NC, Joy Perry Run: 8.83 S Apr 11 2025 Print: 8.830 S Apr 11 2025 MiTek Industries, Inc. Tue Oct 28 11:42:44 Page: 1
ID:q6xmDaGgGr4T8wcGw4bQWzKH9V-bhyY2jd4Jz4T6cajNBquPX79fuhcr_UJaLSn7yOvU9



LOAD CASE(S) Standard
1) Dead + Roof Live (balanced): Lumber Increase=1.15,
Plate Increase=1.15
Uniform Loads (lb/ft)
Vert: 1-4=-60, 5-6=-142, 7-10=-20
Concentrated Loads (lb)
Vert: 4=-300

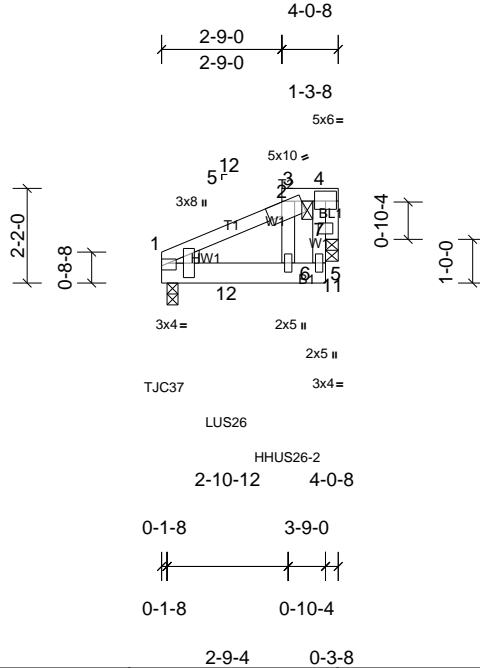


Job	Truss	Truss Type	Qty	Ply	MUNGO HOMES - MCDOWELL C ROOF
72511505	P2	Half Hip Girder	1	2	Job Reference (optional)

UFP Mid Atlantic LLC, 5631 S. NC 62, Burlington, NC, Joy Perry

Run: 8.83 S Apr 11 2025 Print: 8.830 S Apr 11 2025 MiTek Industries, Inc. Tue Oct 28 11:42:45
ID:q6xmDaGgGpr4T8wcGw4bQWzKH9V-3tVwG3ei4HCK5GBnH5i3Rc4H43FqLlikeYE4?JayOvU8

Page: 1



Loading	(psf)	Spacing	2-0-0	CSI		DEFL	in	(loc)	I/defl	L/d	PLATES	GRIP
TCLL (roof)	20.0	Plate Grip DOL	1.15	TC	0.44	Vert(LL)	0.00	6-10	>999	240	MT20	244/190
TCDL	10.0	Lumber DOL	1.15	BC	0.15	Vert(CT)	-0.01	6-10	>999	180		
BCLL	0.0 *	Rep Stress Incr	NO	WB	0.00	Horz(CT)	0.00	1	n/a	n/a		
BCDL	10.0	Code	IRC2015/TPI2014	Matrix-MR							Weight: 44 lb	FT = 20%

LUMBER		
TOP CHORD	2x4 SP No.2	
BOT CHORD	2x6 SP No.2	
WEBS	2x4 SP No.3	
OTHERS	2x4 SP No.3	
WEDGE	Left: 2x4 SP No.2	
BRACING		
TOP CHORD	Structural wood sheathing directly applied or 4-0-8 oc purlins, except end verticals, and 2-0-0 oc purlins: 3-6, 3-4.	
BOT CHORD	Rigid ceiling directly applied or 10-0-0 oc bracing.	
REACTIONS (lb/size)		
	1=617/0-3-0, (min. 0-1-8),	
	11=825/0-3-8, (min. 0-1-8)	
	Max Horiz 1=132 (LC 5)	
	Max Uplift 1=-75 (LC 4)	
FORCES (lb) - Max. Comp./Max. Ten. - All forces 250 (lb) or less except when shown.		
TOP CHORD	1-2=-509/13, 2-6=-61/292, 3-4=-295/0, 5-11=0/575	
BOT CHORD	1-12=-91/468, 6-12=-62/468, 5-6=-9/295	
WEBS	4-11=-352/0	

- NOTES**
- 2-ply truss to be connected together as follows:
Top chords connected with 10d (0.131"x3") nails as follows: 2x4 - 1 row at 0-3-0 oc.
Bottom chords connected with 10d (0.131"x3") nails as follows: 2x6 - 2 rows staggered at 0-9-0 oc.
 - All loads are considered equally applied to all plies, except if noted as front (F) or back (B) face in the LOAD CASE(S) section. Ply to ply connections have been provided to distribute only loads noted as (F) or (B), unless otherwise indicated.
 - Unbalanced roof live loads have been considered for this design.
 - Wind: ASCE 7-10; Vult=130mph (3-second gust) Vasd=103mph; TCDL=6.0psf; BCDL=6.0psf; h=35ft; Cat. II; Exp B; Enclosed; MWFRS (envelope) exterior zone; cantilever left and right exposed; end vertical left and right exposed; porch left and right exposed; Lumber DOL=1.60 plate grip DOL=1.60
 - Provide adequate drainage to prevent water ponding.

- This truss has been designed for a 10.0 psf bottom chord live load nonconcurrent with any other live loads.
- * This truss has been designed for a live load of 20.0psf on the bottom chord in all areas where a rectangle 3-06-00 tall by 2-00-00 wide will fit between the bottom chord and any other members.
- Bearing at joint(s) 11 considers parallel to grain value using ANSI/TPI 1 angle to grain formula. Building designer should verify capacity of bearing surface.
- Provide mechanical connection (by others) of truss to bearing plate capable of withstanding 75 lb uplift at joint 1.
- This truss is designed in accordance with the 2015 International Residential Code sections R502.11.1 and R802.10.2 and referenced standard ANSI/TPI 1.
- Magnitude of user added load(s) on this truss have been applied uniformly across all gravity load cases with no adjustments.
- Graphical purlin representation does not depict the size or the orientation of the purlin along the top and/or bottom chord.
- Use Simpson Strong-Tie TJC37 (4 nail, 90-90) or equivalent at 0-0-12 from the left end to connect truss (es) P3 (1 ply 2x4 SP) to front face of bottom chord.
- Use Simpson Strong-Tie LUS26 (4-10d Girder, 3-10d Truss) or equivalent at 1-5-12 from the left end to connect truss(es) P3 (1 ply 2x4 SP) to front face of bottom chord.
- Use Simpson Strong-Tie HHUS26-2 (14-10d Girder, 4-10d Truss) or equivalent at 2-10-8 from the left end to connect truss(es) RFG (2 ply 2x4 SP) to front face of bottom chord.
- Fill all nail holes where hanger is in contact with lumber.
- Hanger(s) or other connection device(s) shall be provided sufficient to support concentrated load(s) 416 lb down and 187 lb up at 2-10-12 on top chord. The design/selection of such connection device(s) is the responsibility of others.

LOAD CASE(S) Standard

- Dead + Roof Live (balanced): Lumber Increase=1.15, Plate Increase=1.15
Uniform Loads (lb/ft)
Vert: 1-2=-60, 3-4=-60, 5-8=-20
Concentrated Loads (lb)

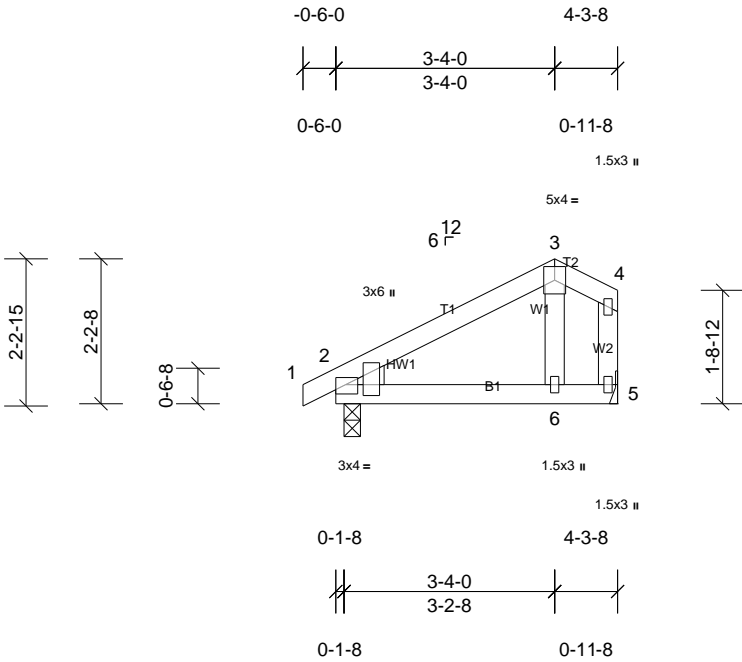
Vert: 2=-300, 6=-556 (F), 8=-153 (F), 12=-144 (F)



This design is based upon parameters shown, and is for an individual building component to be installed and loaded vertically. Applicability of design parameters and proper incorporation of component is responsibility of the Building Designer. Building Designer shall verify all design information on this sheet for conformance with conditions and requirements of the specific building and governing codes and ordinances. Building Designer accepts responsibility for the correctness or accuracy of the design information as it may relate to a specific building. Certification is valid only when truss is fabricated by a UFPI plant. Bracing shown is for lateral support of truss members only and does not replace erection and permanent bracing. Refer to Building Component Safety Information (BCSI) for general guidance regarding storage, erection and bracing available from SBCA and Truss Plate Institute.



Job	Truss	Truss Type	Qty	Ply	MUNGO HOMES - MCDOWELL C ROOF
72511505	P3	Common	2	1	Job Reference (optional)



Loading	(psf)	Spacing	2-0-0	CSI		DEFL	in	(loc)	I/defl	L/d	PLATES	GRIP
TCLL (roof)	20.0	Plate Grip DOL	1.15	TC	0.19	Vert(LL)	0.04	6-9	>999	240	MT20	244/190
TCDL	10.0	Lumber DOL	1.15	BC	0.27	Vert(CT)	-0.04	6-9	>999	180		
BCLL	0.0*	Rep Stress Incr	YES	WB	0.03	Horz(CT)	-0.01	2	n/a	n/a		
BCDL	10.0	Code	IRC2015/TPI2014	Matrix-MP							Weight: 20 lb	FT = 20%

LUMBER

TOP CHORD 2x4 SP No.2
 BOT CHORD 2x4 SP No.2
 WEBS 2x4 SP No.3
 WEDGE Left: 2x4 SP No.2

BRACING

TOP CHORD Structural wood sheathing directly applied or 4-3-8 oc purlins, except end verticals.
 BOT CHORD Rigid ceiling directly applied or 10-0-0 oc bracing.

REACTIONS (lb/size) 2=198/0-3-0, (min. 0-1-8), 5=164/Mechanical
 Max Horiz 2=68 (LC 9)
 Max Uplift 2=-36 (LC 10), 5=-45 (LC 7)

FORCES (lb) - Max. Comp./Max. Ten. - All forces 250 (lb) or less except when shown.

NOTES

- Unbalanced roof live loads have been considered for this design.
- Wind: ASCE 7-10; Vult=130mph (3-second gust) Vasd=103mph; TCDL=6.0psf; BCDL=6.0psf; h=35ft; Cat. II; Exp B; Enclosed; MWFRS (envelope) exterior zone and C-C Exterior (2) zone; cantilever left and right exposed; end vertical left and right exposed; porch left and right exposed;C-C for members and forces & MWFRS for reactions shown; Lumber DOL=1.60 plate grip DOL=1.60
- This truss has been designed for a 10.0 psf bottom chord live load nonconcurrent with any other live loads.
- * This truss has been designed for a live load of 20.0psf on the bottom chord in all areas where a rectangle 3-06-00 tall by 2-00-00 wide will fit between the bottom chord and any other members.
- Provide mechanical connection (by others) of truss to bearing plate at joint(s) 2.
- Provide mechanical connection (by others) of truss to bearing plate capable of withstanding 36 lb uplift at joint 2 and 45 lb uplift at joint 5.
- This truss is designed in accordance with the 2015 International Residential Code sections R502.11.1 and R802.10.2 and referenced standard ANSI/TPI 1.

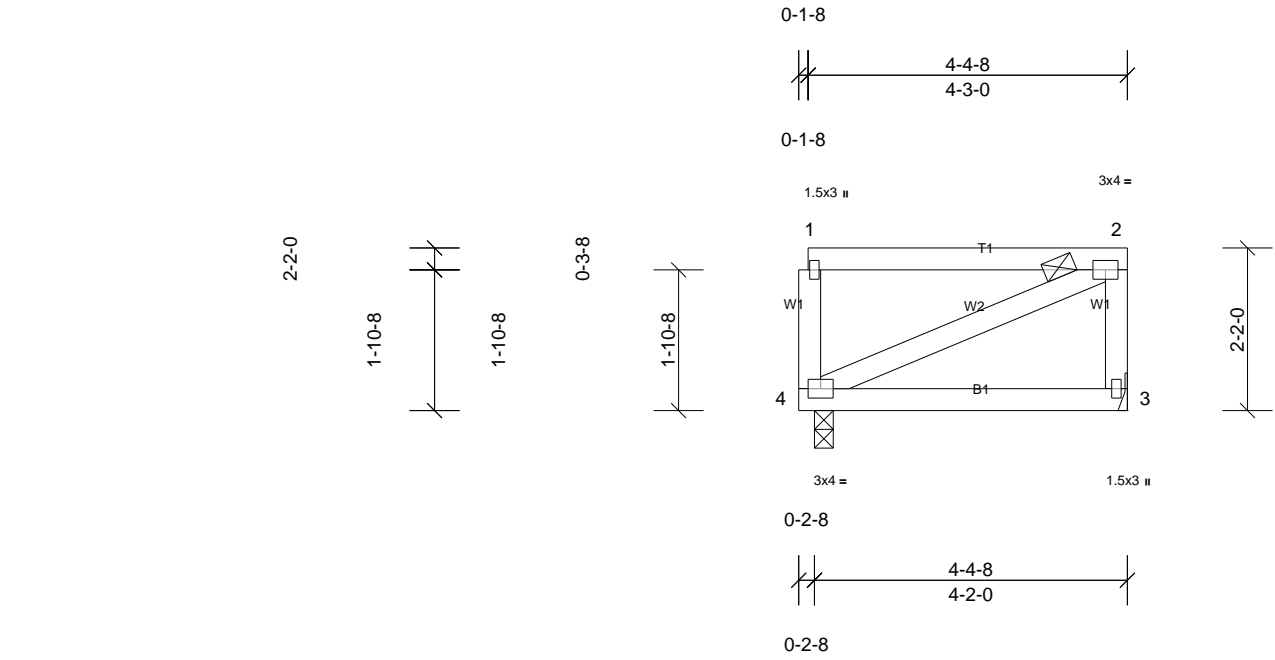


Job	Truss	Truss Type	Qty	Ply	MUNGO HOMES - MCDOWELL C ROOF
72511505	RFG	Flat Girder	1	2	Job Reference (optional)

UFP Mid Atlantic LLC, 5631 S. NC 62, Burlington, NC, Joy Perry

Run: 8.83 S Apr 11 2025 Print: 8.830 S Apr 11 2025 MiTek Industries, Inc. Tue Oct 28 11:42:45
ID:FzLP3z?IWekh1Af_wnhPUtySTkZ-3tVwG3ei4HCK5GBnH5i3Rc4BZ3GSLKreYE4?JayOvU8

Page: 1



Loading	(psf)	Spacing	2-0-0	CSI		DEFL	in	(loc)	I/defl	L/d	PLATES	GRIP
TCLL (roof)	20.0	Plate Grip DOL	1.15	TC	0.79	Vert(LL)	-0.01	3-4	>999	240	MT20	244/190
TCDL	10.0	Lumber DOL	1.15	BC	0.11	Vert(CT)	-0.02	3-4	>999	180		
BCLL	0.0 *	Rep Stress Incr	NO	WB	0.01	Horz(CT)	0.00	3	n/a	n/a		
BCDL	10.0	Code	IRC2015/TPI2014	Matrix-MP							Weight: 47 lb	FT = 20%

LUMBER
TOP CHORD 2x4 SP No.2
BOT CHORD 2x4 SP No.2
WEBS 2x4 SP No.3

BRACING
TOP CHORD 2-0-0 oc purlins: 1-2, except end verticals.
BOT CHORD Rigid ceiling directly applied or 10-0-0 oc bracing.

REACTIONS (lb/size) 3=576/ Mechanical, 4=576/0-3-0, (min. 0-1-8)
Max Horiz 4=71 (LC 4)

FORCES (lb) - Max. Comp./Max. Ten. - All forces 250 (lb) or less except when shown.
TOP CHORD 1-4=-535/0, 2-3=-535/0

- NOTES**
- 2-ply truss to be connected together with 10d (0.131"x3") nails as follows:
Top chords connected as follows: 2x4 - 1 row at 0-9-0 oc.
Bottom chords connected as follows: 2x4 - 1 row at 0-9-0 oc.
Web connected as follows: 2x4 - 1 row at 0-9-0 oc.
 - All loads are considered equally applied to all plies, except if noted as front (F) or back (B) face in the LOAD CASE(S) section. Ply to ply connections have been provided to distribute only loads noted as (F) or (B), unless otherwise indicated.
 - Unbalanced roof live loads have been considered for this design.
 - Wind: ASCE 7-10; Vult=130mph (3-second gust)
Vasd=103mph; TCDL=6.0psf; BCDL=6.0psf; h=35ft; Cat. II; Exp B; Enclosed; MWFRS (envelope) exterior zone; cantilever left and right exposed; end vertical left and right exposed; Lumber DOL=1.60 plate grip DOL=1.60

- Provide adequate drainage to prevent water ponding.
- This truss has been designed for a 10.0 psf bottom chord live load nonconcurrent with any other live loads.
- * This truss has been designed for a live load of 20.0psf on the bottom chord in all areas where a rectangle 3-06-00 tall by 2-00-00 wide will fit between the bottom chord and any other members.

- This truss is designed in accordance with the 2015 International Residential Code sections R502.11.1 and R802.10.2 and referenced standard ANSI/TPI 1.
 - Load case(s) 1 has/have been modified. Building designer must review loads to verify that they are correct for the intended use of this truss.
 - Magnitude of user added load(s) on this truss have been applied uniformly across all gravity load cases with no adjustments.
 - Graphical purlin representation does not depict the size or the orientation of the purlin along the top and/or bottom chord.
- LOAD CASE(S)** Standard
- Dead + Roof Live (balanced): Lumber Increase=1.15, Plate Increase=1.15
Uniform Loads (lb/ft)
Vert: 1-2=-262, 3-4=-20



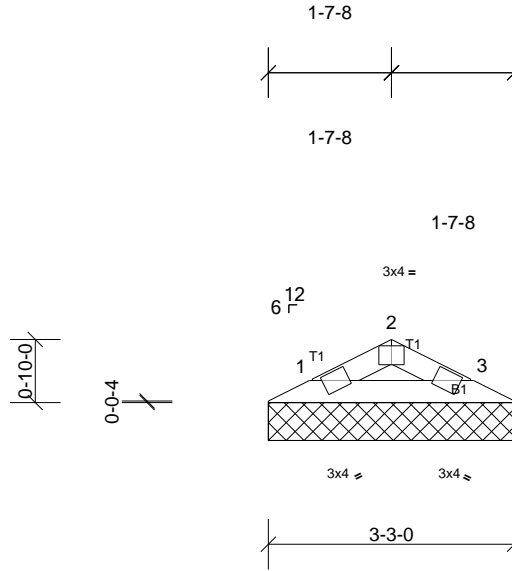
Job	Truss	Truss Type	Qty	Ply	MUNGO HOMES - MCDOWELL C ROOF
72511505	V1	Valley	1	1	Job Reference (optional)

UFP Mid Atlantic LLC, 5631 S. NC 62, Burlington, NC, Joy Perry

Run: 8.83 S Apr 11 2025 Print: 8.830 S Apr 11 2025 MiTek Industries, Inc. Tue Oct 28 11:42:46
ID:q6xmDaGgGpr4T8wcGw4bQWzKH9V-X33ITPeKqaKbjQmzqoDI_qcYISdd4nAnmuqZs0yOvU7

Page: 1

3-3-0



Loading	(psf)	Spacing	2-0-0	CSI		DEFL	in	(loc)	l/defl	L/d	PLATES	GRIP
TCLL (roof)	20.0	Plate Grip DOL	1.15	TC	0.02	Vert(LL)	n/a	-	n/a	999	MT20	244/190
TCDL	10.0	Lumber DOL	1.15	BC	0.05	Vert(TL)	n/a	-	n/a	999		
BCLL	0.0 *	Rep Stress Incr	YES	WB	0.00	Horiz(TL)	0.00	3	n/a	n/a		
BCDL	10.0	Code	IRC2015/TPI2014	Matrix-P							Weight: 8 lb	FT = 20%

LUMBER

TOP CHORD 2x4 SP No.2

BOT CHORD 2x4 SP No.2

BRACING

TOP CHORD Structural wood sheathing directly applied or 3-4-0 oc purlins.

BOT CHORD Rigid ceiling directly applied or 10-0-0 oc bracing.

REACTIONS (lb/size) 1=83/3-3-0, (min. 0-1-8),
3=83/3-3-0, (min. 0-1-8)

Max Horiz 1=9 (LC 14)

Max Uplift 1=-11 (LC 10), 3=-11 (LC 11)

FORCES (lb) - Max. Comp./Max. Ten. - All forces 250
(lb) or less except when shown.

NOTES

- 1) Unbalanced roof live loads have been considered for this design.
- 2) Wind: ASCE 7-10; Vult=130mph (3-second gust)
Vasd=103mph; TCDL=6.0psf; BCDL=6.0psf; h=35ft; Cat. II; Exp B; Enclosed; MWFRS (envelope) exterior zone and C-C Exterior (2) zone; cantilever left and right exposed; end vertical left and right exposed; C-C for members and forces & MWFRS for reactions shown; Lumber DOL=1.60 plate grip DOL=1.60
- 3) Gable requires continuous bottom chord bearing.
- 4) This truss has been designed for a 10.0 psf bottom chord live load nonconcurrent with any other live loads.
- 5) * This truss has been designed for a live load of 20.0psf on the bottom chord in all areas where a rectangle 3-06-00 tall by 2-00-00 wide will fit between the bottom chord and any other members.
- 6) Provide mechanical connection (by others) of truss to bearing plate capable of withstanding 11 lb uplift at joint 1 and 11 lb uplift at joint 3.
- 7) This truss is designed in accordance with the 2015 International Residential Code sections R502.11.1 and R802.10.2 and referenced standard ANSI/TPI 1.



This design is based upon parameters shown, and is for an individual building component to be installed and loaded vertically. Applicability of design parameters and proper incorporation of component is responsibility of the Building Designer. Building Designer shall verify all design information on this sheet for conformance with conditions and requirements of the specific building and governing codes and ordinances. Building Designer accepts responsibility for the correctness or accuracy of the design information as it may relate to a specific building. Certification is valid only when truss is fabricated by a UFPI plant. Bracing shown is for lateral support of truss members only and does not replace erection and permanent bracing. Refer to Building Component Safety Information (BCSI) for general guidance regarding storage, erection and bracing available from SBCA and Truss Plate Institute.

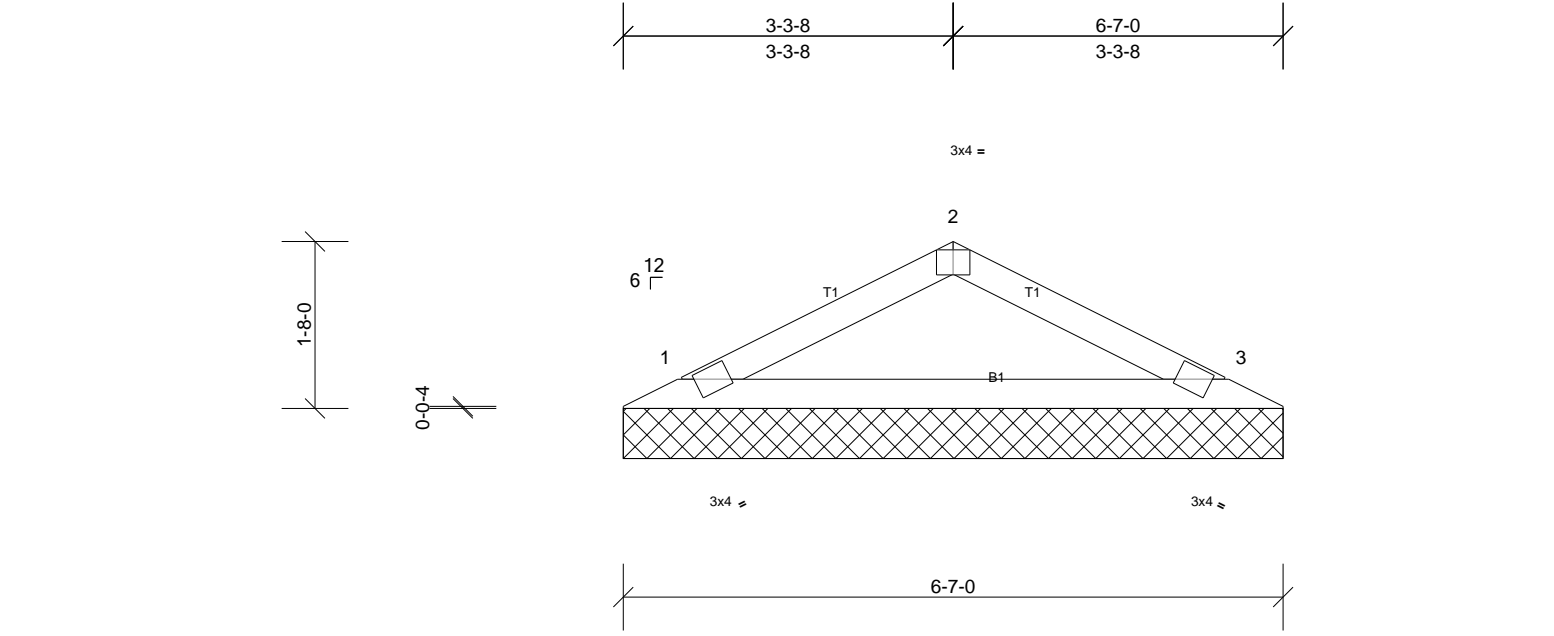


Job	Truss	Truss Type	Qty	Ply	MUNGO HOMES - MCDOWELL C ROOF
72511505	V2	Valley	1	1	Job Reference (optional)

UFP Mid Atlantic LLC, 5631 S. NC 62, Burlington, NC, Joy Perry

Run: 8.83 S Apr 11 2025 Print: 8.830 S Apr 11 2025 MiTek Industries, Inc. Tue Oct 28 11:42:46
ID:q6xmDaGgGpr4T8wcGw4bQWzKH9V-X33ITPeKqaKbjQmzqoDL_qcWGSaz4nAnmuqZs0yOvU7

Page: 1



Loading	(psf)	Spacing	2-0-0	CSI	DEFL	in	(loc)	l/defl	L/d	PLATES	GRIP
TCLL (roof)	20.0	Plate Grip DOL	1.15	TC	0.15	Vert(LL)	n/a	-	n/a	999	MT20
TCDL	10.0	Lumber DOL	1.15	BC	0.22	Vert(TL)	n/a	-	n/a	999	244/190
BCLL	0.0*	Rep Stress Incr	YES	WB	0.00	Horiz(TL)	0.00	3	n/a	n/a	
BCDL	10.0	Code	IRC2015/TPI2014	Matrix-SH							Weight: 19 lb FT = 20%

LUMBER
TOP CHORD 2x4 SP No.2
BOT CHORD 2x4 SP No.2

BRACING
TOP CHORD Structural wood sheathing directly applied or 6-0-0 oc purlins.
BOT CHORD Rigid ceiling directly applied or 10-0-0 oc bracing.

REACTIONS (lb/size) 1=216/6-7-0, (min. 0-1-8), 3=216/6-7-0, (min. 0-1-8)
Max Horiz 1=-24 (LC 11)
Max Uplift 1=-30 (LC 10), 3=-30 (LC 11)

FORCES (lb) - Max. Comp./Max. Ten. - All forces 250 (lb) or less except when shown.

- NOTES**
- 1) Unbalanced roof live loads have been considered for this design.
 - 2) Wind: ASCE 7-10; Vult=130mph (3-second gust) Vasd=103mph; TCDL=6.0psf; BCDL=6.0psf; h=35ft; Cat. II; Exp B; Enclosed; MWFRS (envelope) exterior zone and C-C Exterior (2) zone; cantilever left and right exposed; end vertical left and right exposed; C-C for members and forces & MWFRS for reactions shown; Lumber DOL=1.60 plate grip DOL=1.60
 - 3) Gable requires continuous bottom chord bearing.
 - 4) This truss has been designed for a 10.0 psf bottom chord live load nonconcurrent with any other live loads.
 - 5) * This truss has been designed for a live load of 20.0psf on the bottom chord in all areas where a rectangle 3-06-00 tall by 2-00-00 wide will fit between the bottom chord and any other members.
 - 6) Provide mechanical connection (by others) of truss to bearing plate capable of withstanding 30 lb uplift at joint 1 and 30 lb uplift at joint 3.
 - 7) This truss is designed in accordance with the 2015 International Residential Code sections R502.11.1 and R802.10.2 and referenced standard ANSI/TPI 1.

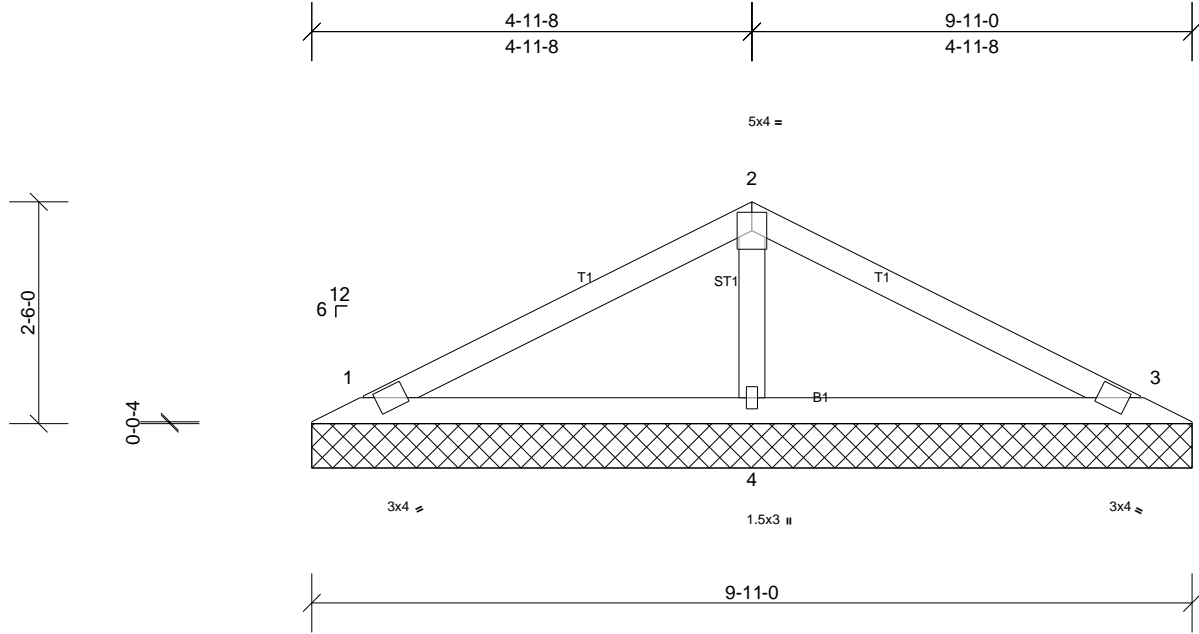


Job	Truss	Truss Type	Qty	Ply	MUNGO HOMES - MCDOWELL C ROOF
72511505	V3	Valley	1	1	Job Reference (optional)

UFP Mid Atlantic LLC, 5631 S. NC 62, Burlington, NC, Joy Perry

Run: 8.83 S Apr 11 2025 Print: 8.830 S Apr 11 2025 MiTek Industries, Inc. Tue Oct 28 11:42:46
ID:q6xmDaGgGpr4T8wcGw4bQWzKH9V-X33ITPeKqKbJQmzqoDI_qcVvSbU4nNnmuzs0yOvU7

Page: 1



Loading	(psf)	Spacing	2-0-0	CSI		DEFL	in	(loc)	I/defl	L/d	PLATES	GRIP
TCLL (roof)	20.0	Plate Grip DOL	1.15	TC	0.24	Vert(LL)	n/a	-	n/a	999	MT20	244/190
TCDL	10.0	Lumber DOL	1.15	BC	0.19	Vert(TL)	n/a	-	n/a	999		
BCLL	0.0 *	Rep Stress Incr	YES	WB	0.05	Horiz(TL)	0.00	3	n/a	n/a		
BCDL	10.0	Code	IRC2015/TPI2014	Matrix-SH							Weight: 32 lb	FT = 20%

LUMBER

TOP CHORD 2x4 SP No.2
BOT CHORD 2x4 SP No.2
OTHERS 2x4 SP No.3

BRACING

TOP CHORD Structural wood sheathing directly applied or 6-0-0 oc purlins.
BOT CHORD Rigid ceiling directly applied or 10-0-0 oc bracing.

REACTIONS

(lb/size) 1=157/9-11-0, (min. 0-1-8),
3=157/9-11-0, (min. 0-1-8),
4=386/9-11-0, (min. 0-1-8)
Max Horiz 1=38 (LC 14)
Max Uplift 1=-34 (LC 10), 3=-41 (LC 11),
4=-28 (LC 10)
Max Grav 1=159 (LC 21), 3=159 (LC 22),
4=386 (LC 1)

FORCES

(lb) - Max. Comp./Max. Ten. - All forces 250 (lb) or less except when shown.

NOTES

- Unbalanced roof live loads have been considered for this design.
- Wind: ASCE 7-10; Vult=130mph (3-second gust) Vasd=103mph; TCDL=6.0psf; BCDL=6.0psf; h=35ft; Cat. II; Exp B; Enclosed; MWFRS (envelope) exterior zone and C-C Exterior (2) zone; cantilever left and right exposed; end vertical left and right exposed; C-C for members and forces & MWFRS for reactions shown; Lumber DOL=1.60 plate grip DOL=1.60
- Gable requires continuous bottom chord bearing.
- This truss has been designed for a 10.0 psf bottom chord live load nonconcurrent with any other live loads.
- * This truss has been designed for a live load of 20.0psf on the bottom chord in all areas where a rectangle 3-06-00 tall by 2-00-00 wide will fit between the bottom chord and any other members.
- Provide mechanical connection (by others) of truss to bearing plate capable of withstanding 34 lb uplift at joint 1, 41 lb uplift at joint 3 and 28 lb uplift at joint 4.
- This truss is designed in accordance with the 2015 International Residential Code sections R502.11.1 and R802.10.2 and referenced standard ANSI/TPI 1.



This design is based upon parameters shown, and is for an individual building component to be installed and loaded vertically. Applicability of design parameters and proper incorporation of component is responsibility of the Building Designer. Building Designer shall verify all design information on this sheet for conformance with conditions and requirements of the specific building and governing codes and ordinances. Building Designer accepts responsibility for the correctness or accuracy of the design information as it may relate to a specific building. Certification is valid only when truss is fabricated by a UFPI plant. Bracing shown is for lateral support of truss members only and does not replace erection and permanent bracing. Refer to Building Component Safety Information (BCSI) for general guidance regarding storage, erection and bracing available from SBCA and Truss Plate Institute.

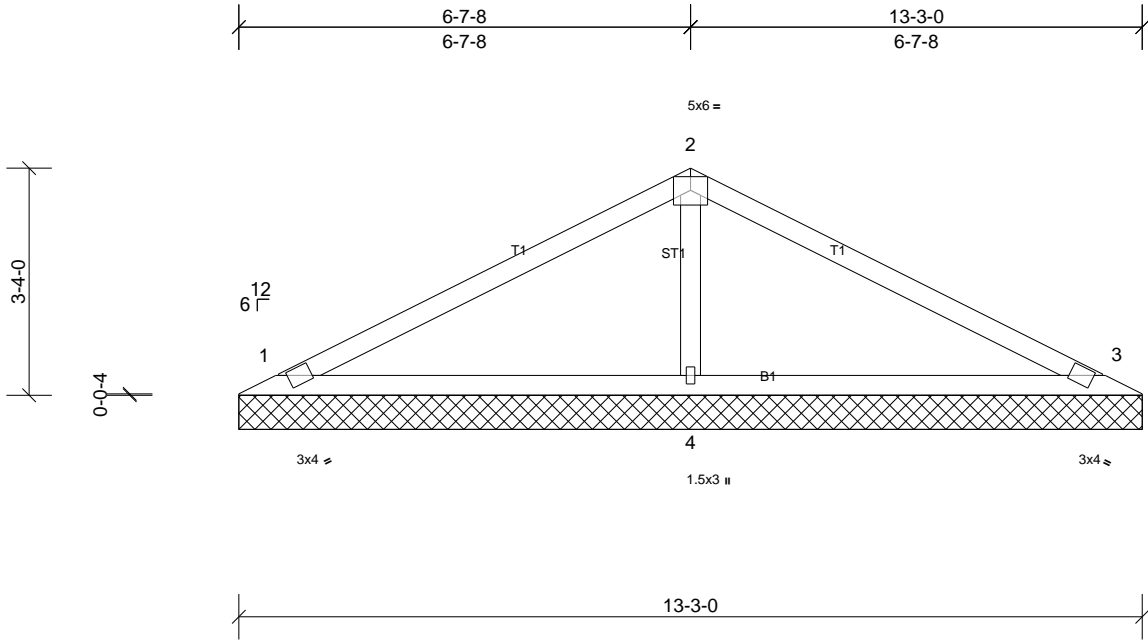


Job	Truss	Truss Type	Qty	Ply	MUNGO HOMES - MCDOWELL C ROOF
72511505	V4	Valley	1	1	Job Reference (optional)

UFP Mid Atlantic LLC, 5631 S. NC 62, Burlington, NC, Joy Perry

Run: 8.830 S Apr 11 2025 Print: 8.830 S Apr 11 2025 MiTek Industries, Inc. Tue Oct 28 11:42:46
ID:q6xmDaGgGpr4T8wcGw4bQWzKH9V-X33ITPeKqaKbjQmzqoDI_qcR7SYr4mtnmuqZs0yOvU7

Page: 1



Loading	(psf)	Spacing	2-0-0	CSI	DEFL	in	(loc)	I/defl	L/d	PLATES	GRIP
TCLL (roof)	20.0	Plate Grip DOL	1.15	TC	0.48	Vert(LL)	n/a	-	n/a	999	244/190
TCDL	10.0	Lumber DOL	1.15	BC	0.36	Vert(TL)	n/a	-	n/a	999	
BCLL	0.0*	Rep Stress Incr	YES	WB	0.08	Horiz(TL)	0.00	3	n/a	n/a	
BCDL	10.0	Code	IRC2015/TPI2014	Matrix-SH							Weight: 44 lb FT = 20%

LUMBER
TOP CHORD 2x4 SP No.2
BOT CHORD 2x4 SP No.2
OTHERS 2x4 SP No.3

BRACING
TOP CHORD Structural wood sheathing directly applied or 6'-0'-0 oc purlins.
BOT CHORD Rigid ceiling directly applied or 10'-0'-0 oc bracing.

REACTIONS (lb/size)
1=216/13-3-0, (min. 0-1-8),
3=216/13-3-0, (min. 0-1-8),
4=534/13-3-0, (min. 0-1-8)
Max Horiz 1=53 (LC 14)
Max Uplift 1=-47 (LC 10), 3=-56 (LC 11),
4=-39 (LC 10)
Max Grav 1=220 (LC 21), 3=220 (LC 22),
4=534 (LC 1)

FORCES (lb) - Max. Comp./Max. Ten. - All forces 250 (lb) or less except when shown.

WEBS 2-4=-332/162

- NOTES**
- Unbalanced roof live loads have been considered for this design.
 - Wind: ASCE 7-10; Vult=130mph (3-second gust) Vasd=103mph; TCDL=6.0psf; BCDL=6.0psf; h=35ft; Cat. II; Exp B; Enclosed; MWFRS (envelope) exterior zone and C-C Exterior (2) zone; cantilever left and right exposed; end vertical left and right exposed; C-C for members and forces & MWFRS for reactions shown; Lumber DOL=1.60 plate grip DOL=1.60
 - Gable requires continuous bottom chord bearing.
 - This truss has been designed for a 10.0 psf bottom chord live load nonconcurrent with any other live loads.
 - * This truss has been designed for a live load of 20.0psf on the bottom chord in all areas where a rectangle 3'-0"-0 tall by 2'-0"-0 wide will fit between the bottom chord and any other members.
 - Provide mechanical connection (by others) of truss to bearing plate capable of withstanding 47 lb uplift at joint 1, 56 lb uplift at joint 3 and 39 lb uplift at joint 4.
 - This truss is designed in accordance with the 2015 International Residential Code sections R502.11.1 and R802.10.2 and referenced standard ANSI/TPI 1.

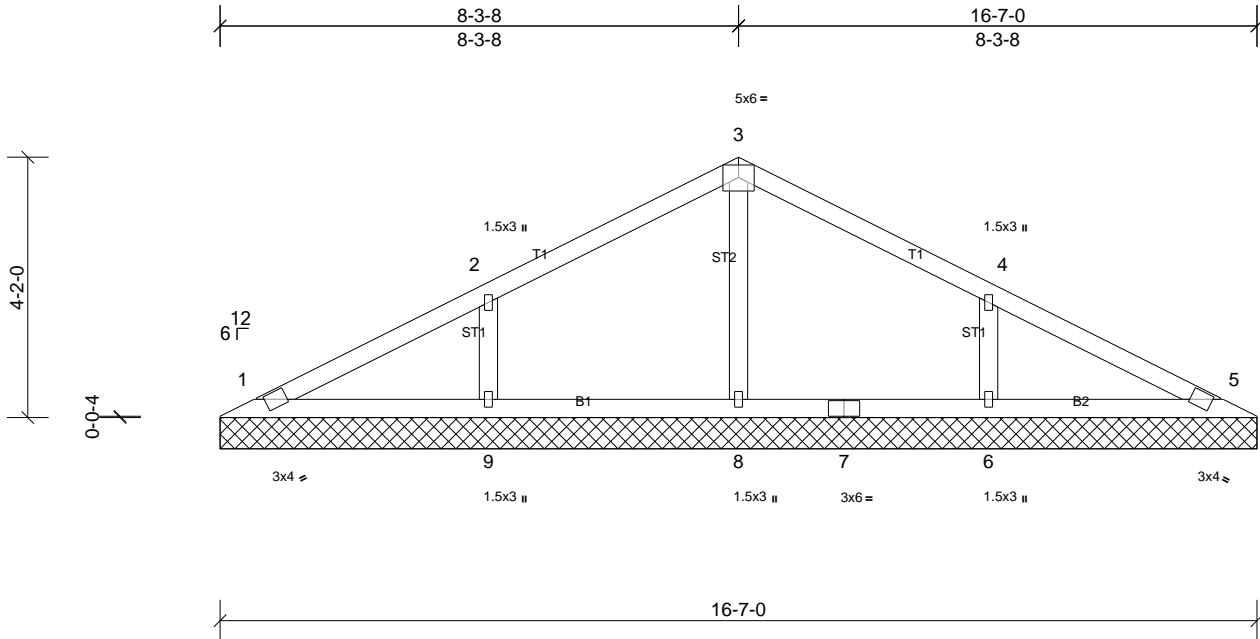


Job	Truss	Truss Type	Qty	Ply	MUNGO HOMES - MCDOWELL C ROOF
72511505	V5	Valley	1	1	Job Reference (optional)

UFP Mid Atlantic LLC, 5631 S. NC 62, Burlington, NC, Joy Perry

Run: 8.83 S Apr 11 2025 Print: 8.830 S Apr 11 2025 MiTek Industries, Inc. Tue Oct 28 11:42:47
 Page: 1

ID:q6xmDaGgGpr4T8wcGw4bQWzKH9V-?GdhlfybuSRKZL9OWkXW19fAsympESw?YZ6OSyOvU6



Loading	(psf)	Spacing	2-0-0	CSI		DEFL	in	(loc)	I/defl	L/d	PLATES	GRIP
TCLL (roof)	20.0	Plate Grip DOL	1.15	TC	0.21	Vert(LL)	n/a	-	n/a	999	MT20	244/190
TCDL	10.0	Lumber DOL	1.15	BC	0.12	Vert(TL)	n/a	-	n/a	999		
BCLL	0.0 *	Rep Stress Incr	YES	WB	0.06	Horiz(TL)	0.00	5	n/a	n/a		
BCDL	10.0	Code	IRC2015/TPI2014	Matrix-SH							Weight: 60 lb	FT = 20%

LUMBER

TOP CHORD 2x4 SP No.2
 BOT CHORD 2x4 SP No.2
 OTHERS 2x4 SP No.3

BRACING

TOP CHORD Structural wood sheathing directly applied or 6-0-0 oc purlins.
 BOT CHORD Rigid ceiling directly applied or 10-0-0 oc bracing.

REACTIONS

All bearings 16-7-0.
 (lb) - Max Horiz 1=67 (LC 14)
 Max Uplift All uplift 100 (lb) or less at joint(s)
 1, 5 except 6=127 (LC 11), 9=127 (LC 10)
 Max Grav All reactions 250 (lb) or less at joint
 (s) 1, 5 except 6=367 (LC 22),
 8=263 (LC 1), 9=367 (LC 21)

FORCES

(lb) - Max. Comp./Max. Ten. - All forces 250
 (lb) or less except when shown.

WEBS

2-9=-270/190, 4-6=-270/190

NOTES

- Unbalanced roof live loads have been considered for this design.
- Wind: ASCE 7-10; Vult=130mph (3-second gust)
 Vasd=103mph; TCDL=6.0psf; BCDL=6.0psf; h=35ft; Cat. II; Exp B; Enclosed; MWFRS (envelope) exterior zone and C-C Exterior (2) zone; cantilever left and right exposed ; end vertical left and right exposed;C-C for members and forces & MWFRS for reactions shown; Lumber DOL=1.60 plate grip DOL=1.60
- Gable requires continuous bottom chord bearing.
- This truss has been designed for a 10.0 psf bottom chord live load nonconcurrent with any other live loads.
- * This truss has been designed for a live load of 20.0psf on the bottom chord in all areas where a rectangle 3-06-00 tall by 2-00-00 wide will fit between the bottom chord and any other members.
- Provide mechanical connection (by others) of truss to bearing plate capable of withstanding 100 lb uplift at joint (s) 1, 5 except (jt=lb) 9=127, 6=127.
- This truss is designed in accordance with the 2015 International Residential Code sections R502.11.1 and R802.10.2 and referenced standard ANSI/TPI 1.

