

RE: 4939005 - JSJ, Smith Prime Plan (8-20-25)

Trenco
818 Soundside Rd
Edenton, NC 27932

Site Information:

Project Customer: JSJ Builders Project Name:
Lot/Block: 21 Subdivision: ILA'S WAY
Address: 137 BAXLEY DR
City: DUNN State: NC

Name Address and License # of Structural Engineer of Record, If there is one, for the building.

Name: License #:
Address:
City, County: State:

General Truss Engineering Criteria & Design Loads (Individual Truss Design Drawings Show Special Loading Conditions):

Design Code: IRC2015/TPI2014 Design Program: MiTek 20/20 8.8
Wind Code: ASCE 7-10 Design Method: MWFRS (Envelope)/C-C hybrid Wind ASCE 7-10
Wind Speed: 130 mph
Roof Load: 40.0 psf Floor Load: N/A psf

This package includes 16 individual, dated Truss Design Drawings and 0 Additional Drawings.

No.	Seal#	Job ID#	Truss Name	Date
1	177536763	4939005	A01	11/5/25
2	177536764	4939005	A02	11/5/25
3	177536765	4939005	A03	11/5/25
4	177536766	4939005	A04	11/5/25
5	177536767	4939005		11/5/25
6	177536768	4939005	A06	11/5/25
7	177536769	4939005	A07	11/5/25
8	177536770	4939005	A08	11/5/25
9	177536771	4939005	A09	11/5/25
10	177536772	4939005	B01	11/5/25
11	177536773	4939005	B02	11/5/25
12	177536774	4939005	B03	11/5/25
13	177536775	4939005		11/5/25
14	177536776	4939005	B05	11/5/25
	177536777	4939005	PB01	11/5/25
16	177536778	4939005	PB02	11/5/25

The truss drawing(s) referenced above have been prepared by
Truss Engineering Co. under my direct supervision based on the parameters
provided by Builders FirstSource-Sumter,SC.

Truss Design Engineer's Name: Gilbert, Eric

My license renewal date for the state of North Carolina is December 31, 2025.

IMPORTANT NOTE: The seal on these truss component designs is a certification that the engineer named is licensed in the jurisdiction(s) identified and that the designs comply with ANSI/TPI 1. These designs are based upon parameters shown (e.g., loads, supports, dimensions, shapes and design codes), which were given to MiTek or TRENCO. Any project specific information included is for MiTek's or TRENCO's customers file reference purpose only, and was not taken into account in the preparation of these designs. MiTek or TRENCO has not independently verified the applicability of the design parameters or the designs for any particular building. Before use, the building designer should verify applicability of design parameters and properly incorporate these designs into the overall building design per ANSI/TPI 1, Chapter 2.



November 5, 2025

Gilbert, Eric

RE: \$JOBNAME - \$JOBDESC

Trenco
818 Soundside Rd
Edenton, NC 27932

Site Information:

Project Customer: \$SI_CUSTOMER Project Name: \$SI_JOBNAME
Lot/Block: \$SI_LOTNUM Subdivision: \$SI_SUBDIV
Address: \$SI_SITEADDR
City, County: \$SI_SITECITY State: \$SI_SITESTATE

RE: \$JOBNAME - \$JOBDESC

Trenco
818 Soundside Rd
Edenton, NC 27932

Site Information:

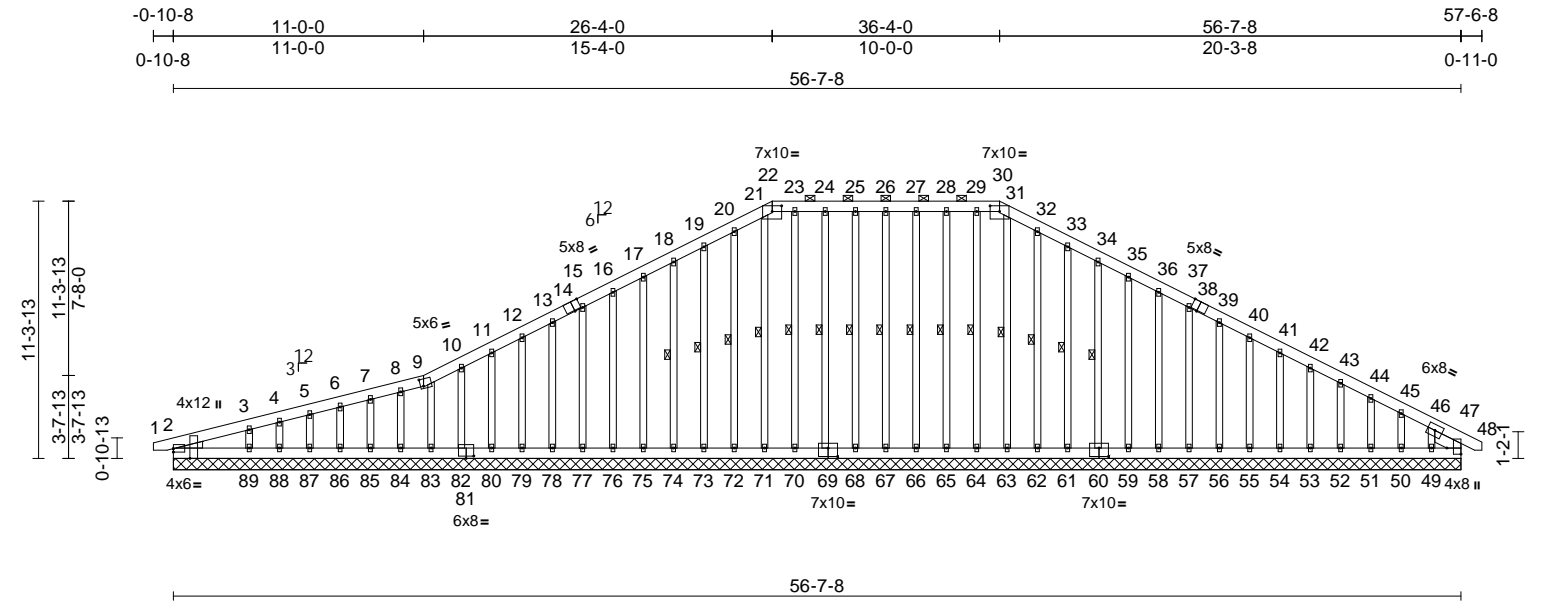
Project Customer: \$SI_CUSTOMER Project Name: \$SI_JOBNAME
Lot/Block: \$SI_LOTNUM Subdivision: \$SI_SUBDIV
Address: \$SI_SITEADDR
City, County: \$SI_SITECITY State: \$SI_SITESTATE

Job	Truss	Truss Type	Qty	Ply	JSJ, Smith Prime Plan (8-20-25)	
4939005	A01	Piggyback Base Supported Gable	1	1	Job Reference (optional)	I77536763

Builders FirstSource (Sumter, SC), Sumter, SC - 29153,

Run: 8.83 S Sep 3 2025 Print: 8.830 S Sep 3 2025 MiTek Industries, Inc. Tue Nov 04 11:28:32
ID:rXx7qFxcR9Qpgha4WwwB0Uylhb0-RfC?PsB70Hq3NSgPqnL8w3ulTXbGKWrCDoi7J4zJC?f

Page: 1




Scale = 1:101.3

[2:Edge,0-1-13], [2:0-5-2,Edge], [9:0-1-9,0-3-12], [14:0-3-10,Edge], [22:0-5-0,0-3-0], [30:0-5-0,0-3-0], [38:0-3-10,Edge], [47:Edge,0-7-8], [60:0-5-0,0-4-8],
Plate Offsets (X, Y): [69:0-5-0,0-4-8], [81:0-4-0,0-1-4]

Loading	(psf)	Spacing	2-0-0	CSI	DEFL	in	(loc)	l/defl	L/d	PLATES	GRIP
TCLL (roof)	20.0	Plate Grip DOL	1.15	TC	0.09	Vert(LL)	n/a	-	n/a	999	MT20
TCDL	10.0	Lumber DOL	1.15	BC	0.06	Vert(CT)	n/a	-	n/a	999	244/190
BCLL	0.0*	Rep Stress Incr	YES	WB	0.09	Horz(CT)	0.01	47	n/a	n/a	
BCDL	10.0	Code	IRC2015/TPI2014	Matrix-MS							Weight: 651 lb FT = 20%

LUMBER		Max Uplift	2=-59 (LC 8), 49=-166 (LC 13), 50=-53 (LC 13), 51=-56 (LC 13), 52=-54 (LC 13), 53=-55 (LC 13), 54=-55 (LC 13), 55=-55 (LC 13), 56=-55 (LC 13), 57=-55 (LC 13), 58=-55 (LC 13), 59=-56 (LC 13), 60=-58 (LC 13), 61=-62 (LC 13), 62=-35 (LC 13), 64=-6 (LC 9), 65=-37 (LC 9), 66=-41 (LC 8), 67=-39 (LC 8), 68=-43 (LC 8), 69=-36 (LC 9), 70=-8 (LC 9), 72=-40 (LC 12), 73=-60 (LC 12), 74=-57 (LC 12), 75=-55 (LC 12), 76=-55 (LC 12), 77=-55 (LC 12), 78=-55 (LC 12), 79=-55 (LC 12), 80=-57 (LC 12), 82=-55 (LC 12), 83=-38 (LC 13), 84=-33 (LC 8), 85=-47 (LC 12), 86=-41 (LC 8), 87=-52 (LC 12), 88=-13 (LC 8), 89=-181 (LC 12)	Max Grav	2=157 (LC 1), 47=163 (LC 22), 49=99 (LC 24), 50=103 (LC 24), 51=108 (LC 1), 52=106 (LC 1), 53=107 (LC 24), 54=107 (LC 1), 55=107 (LC 24), 56=107 (LC 1), 57=107 (LC 1), 58=107 (LC 24), 59=106 (LC 24), 60=107 (LC 1), 61=108 (LC 1), 62=106 (LC 24), 63=105 (LC 22), 64=105 (LC 24), 65=108 (LC 23), 66=108 (LC 23), 67=107 (LC 23), 68=106 (LC 24), 69=108 (LC 24), 70=110 (LC 22), 71=122 (LC 22), 72=106 (LC 23), 73=107 (LC 1), 74=107 (LC 1), 75=107 (LC 1), 76=107 (LC 23), 77=107 (LC 1), 78=107 (LC 1), 79=106 (LC 23), 80=106 (LC 23), 82=120 (LC 1), 83=104 (LC 1), 84=97 (LC 1), 85=107 (LC 23), 86=105 (LC 1), 87=118 (LC 23), 88=45 (LC 21), 89=256 (LC 23)
BRACING					
TOP CHORD	Structural wood sheathing directly applied or 6-0-0 oc purlins, except				
	2-0-0 oc purlins (6-0-0 max.): 22-30.				
BOT CHORD	Rigid ceiling directly applied or 10-0-0 oc bracing.				
WEBS	1 Row at midpt	26-67, 27-66, 28-65, 29-64, 31-63, 32-62, 33-61, 34-60, 25-68, 24-69, 23-70, 21-71, 20-72, 19-73, 18-74			
REACTIONS (size)	2=56-7-8, 47=56-7-8, 49=56-7-8, 50=56-7-8, 51=56-7-8, 52=56-7-8, 53=56-7-8, 54=56-7-8, 55=56-7-8, 56=56-7-8, 57=56-7-8, 58=56-7-8, 59=56-7-8, 60=56-7-8, 61=56-7-8, 62=56-7-8, 63=56-7-8, 64=56-7-8, 65=56-7-8, 66=56-7-8, 67=56-7-8, 68=56-7-8, 69=56-7-8, 70=56-7-8, 71=56-7-8, 72=56-7-8, 73=56-7-8, 74=56-7-8, 75=56-7-8, 76=56-7-8, 77=56-7-8, 78=56-7-8, 79=56-7-8, 80=56-7-8, 82=56-7-8, 83=56-7-8, 84=56-7-8, 85=56-7-8, 86=56-7-8, 87=56-7-8, 88=56-7-8, 89=56-7-8				
Max Horiz	2=240 (LC 12)				





November 5, 2025

Job	Truss	Truss Type	Qty	Ply	JSJ, Smith Prime Plan (8-20-25)
4939005	A01	Piggyback Base Supported Gable	1	1	177536763
Job Reference (optional)					

Builders FirstSource (Sumter, SC), Sumter, SC - 29153,

Run: 8.83 S Sep 3 2025 Print: 8.830 S Sep 3 2025 MiTek Industries, Inc. Tue Nov 04 11:28:32
ID:rXx7qFxcR9Qpgha4WwwB0Uylhb0-RfC?PsB70Hq3NSgPqnL8w3uITXbGKWRCDoi7J4zJC?f

Page: 2

FORCES (lb) - Maximum Compression/Maximum Tension

TOP CHORD 1-2=0/8, 2-3=-283/97, 3-4=-245/95, 4-5=-234/103, 5-6=-215/107, 6-7=-197/112, 7-8=-178/117, 8-9=-166/121, 9-10=-154/141, 10-11=-124/162, 11-12=-96/184, 12-13=-72/206, 13-15=-70/228, 15-16=-85/250, 16-17=-100/272, 17-18=-115/308, 18-19=-130/352, 19-20=-146/398, 20-21=-156/430, 21-22=-149/404, 22-23=-148/418, 23-24=-148/418, 24-25=-147/417, 25-26=-147/417, 26-27=-147/417, 27-28=-147/417, 28-29=-147/417, 29-30=-147/417, 30-31=-149/403, 31-32=-156/430, 32-33=-146/397, 33-34=-130/351, 34-35=-114/307, 35-36=-99/264, 36-37=-84/221, 37-39=-69/178, 39-40=-54/135, 40-41=-39/92, 41-42=-35/61, 42-43=-56/42, 43-44=-88/34, 44-45=-126/36, 45-46=-168/53, 46-47=-93/31, 47-48=0/20

BOT CHORD 2-89=-90/207, 88-89=-54/207, 87-88=-54/207, 86-87=-54/207, 85-86=-54/207, 84-85=-54/207, 83-84=-54/207, 82-83=-60/212, 80-82=-60/212, 79-80=-60/212, 78-79=-60/212, 77-78=-60/212, 76-77=-60/212, 75-76=-60/212, 74-75=-60/212, 73-74=-60/212, 72-73=-60/212, 71-72=-60/212, 70-71=-60/212, 68-70=-61/213, 67-68=-61/213, 66-67=-61/213, 65-66=-61/213, 64-65=-61/213, 63-64=-61/213, 62-63=-61/213, 61-62=-61/213, 59-61=-61/213, 58-59=-61/213, 57-58=-61/213, 56-57=-61/213, 55-56=-61/213, 54-55=-61/213, 53-54=-61/213, 52-53=-61/213, 51-52=-61/213, 50-51=-61/213, 49-50=-61/213, 47-49=-61/213

WEBS 26-67=-80/59, 27-66=-81/61, 28-65=-81/53, 29-64=-78/22, 31-63=-79/0, 32-62=-80/56, 33-61=-80/87, 34-60=-80/83, 35-59=-80/80, 36-58=-80/80, 37-57=-80/80, 39-56=-80/80, 40-55=-80/80, 41-54=-80/80, 42-53=-80/80, 43-52=-80/80, 44-51=-80/79, 45-50=-80/87, 46-49=-75/135, 25-68=-81/60, 24-69=-81/53, 23-70=-81/26, 21-71=-96/3, 20-72=-80/56, 19-73=-80/87, 18-74=-80/84, 17-75=-80/80, 16-76=-80/80, 15-77=-80/80, 13-78=-80/80, 12-79=-79/80, 11-80=-79/81, 10-82=-94/86, 9-83=-78/79, 8-84=-71/49, 7-85=-80/68, 6-86=-81/67, 5-87=-81/67, 4-88=-55/44, 3-89=-155/131

- 9) * This truss has been designed for a live load of 20.0psf on the bottom chord in all areas where a rectangle 3-06-00 tall by 2-00-00 wide will fit between the bottom chord and any other members.
- 10) Provide mechanical connection (by others) of truss to bearing plate capable of withstanding 59 lb uplift at joint 2, 39 lb uplift at joint 67, 41 lb uplift at joint 66, 37 lb uplift at joint 65, 6 lb uplift at joint 64, 35 lb uplift at joint 62, 62 lb uplift at joint 61, 58 lb uplift at joint 60, 56 lb uplift at joint 59, 55 lb uplift at joint 58, 55 lb uplift at joint 57, 55 lb uplift at joint 56, 55 lb uplift at joint 55, 55 lb uplift at joint 54, 55 lb uplift at joint 53, 54 lb uplift at joint 52, 56 lb uplift at joint 51, 53 lb uplift at joint 50, 166 lb uplift at joint 49, 43 lb uplift at joint 68, 36 lb uplift at joint 69, 8 lb uplift at joint 70, 40 lb uplift at joint 72, 60 lb uplift at joint 73, 57 lb uplift at joint 74, 55 lb uplift at joint 75, 55 lb uplift at joint 76, 55 lb uplift at joint 77, 55 lb uplift at joint 78, 55 lb uplift at joint 79, 57 lb uplift at joint 80, 55 lb uplift at joint 82, 38 lb uplift at joint 83, 33 lb uplift at joint 84, 47 lb uplift at joint 85, 41 lb uplift at joint 86, 52 lb uplift at joint 87, 13 lb uplift at joint 88, 181 lb uplift at joint 89 and 59 lb uplift at joint 2.
- 11) Graphical purlin representation does not depict the size or the orientation of the purlin along the top and/or bottom chord.

LOAD CASE(S) Standard

NOTES

- Unbalanced roof live loads have been considered for this design.
- Wind: ASCE 7-10; Vult=130mph (3-second gust) Vasd=103mph; TCDL=6.0psf; BCDL=6.0psf; h=25ft; Cat. II; Exp C; Enclosed; MWFRS (envelope) exterior zone and C-C Exterior (2) zone; cantilever left and right exposed ; end vertical left and right exposed; C-C for members and forces & MWFRS for reactions shown; Lumber DOL=1.60 plate grip DOL=1.60
- Truss designed for wind loads in the plane of the truss only. For studs exposed to wind (normal to the face), see Standard Industry Gable End Details as applicable, or consult qualified building designer as per ANSI/TPI 1.
- Provide adequate drainage to prevent water ponding.
- All plates are 2x4 (||) MT20 unless otherwise indicated.
- Gable requires continuous bottom chord bearing.
- Gable studs spaced at 1-4-0 oc.
- This truss has been designed for a 10.0 psf bottom chord live load nonconcurrent with any other live loads.

WARNING - Verify design parameters and READ NOTES ON THIS AND INCLUDED MITEK REFERENCE PAGE MII-7473 rev. 1/2/2023 BEFORE USE.

Design valid for use only with MiTek® connectors. This design is based only upon parameters shown, and is for an individual building component, not a truss system. Before use, the building designer must verify the applicability of design parameters and properly incorporate this design into the overall building design. Bracing indicated is to prevent buckling of individual truss web and/or chord members only. Additional temporary and permanent bracing is always required for stability and to prevent collapse with possible personal injury and property damage. For general guidance regarding the fabrication, storage, delivery, erection and bracing of trusses and truss systems, see **ANSI/TPI1 Quality Criteria and DSB-22** available from Truss Plate Institute (www.tpinst.org) and **BCSI Building Component Safety Information** available from the Structural Building Component Association (www.sbcacomponents.com)

ENGINEERING BY
TRENCO
A MiTek Affiliate

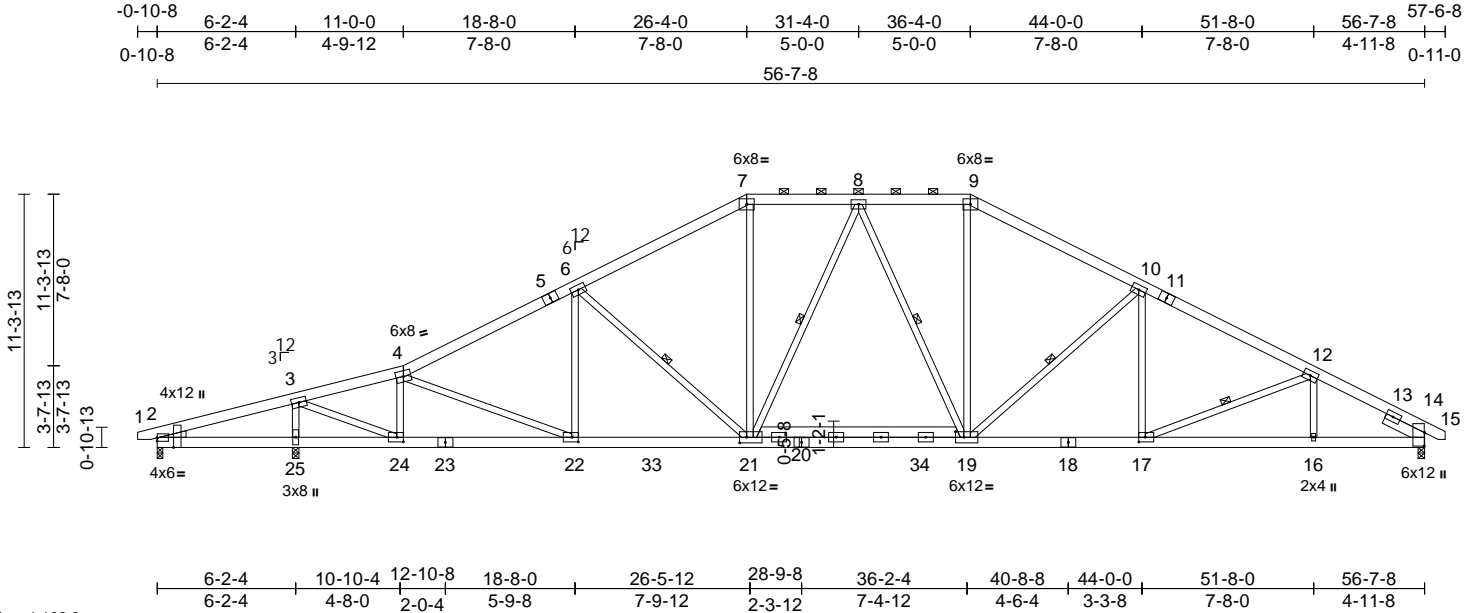
818 Soundside Road
Edenton, NC 27932

Job	Truss	Truss Type	Qty	Ply	JSJ, Smith Prime Plan (8-20-25)	
4939005	A02	Piggyback Base	6	1	Job Reference (optional)	I77536764

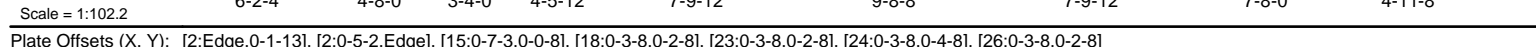
Builders FirstSource (Sumter, SC), Sumter, SC - 29153,

Run: 8.83 S Sep 3 2025 Print: 8.830 S Sep 3 2025 MiTek Industries, Inc. Tue Nov 04 11:28:33
ID:BjfdlmWam8d4mejibxoNWhyIvQ_-RfC?PsB70Hq3NSgPqnL8w3uITxbGKWrCDoi7J4zJC?f

Page: 1



Builders FirstSource (Sumter, SC), Sumter, SC - 29153, Run: 8.83 S Sep 3 2025 Print: 8.830 S Sep 3 2025 MiTek Industries, Inc. Tue Nov 04 11:28:34 Page: 1
ID:GYlQkviJC5Dul?NwSxbqZmvIvOQ-RfC?PsB70Hq3NSqPanL8w3uITXbGKWrcDoi7J4zJC?f

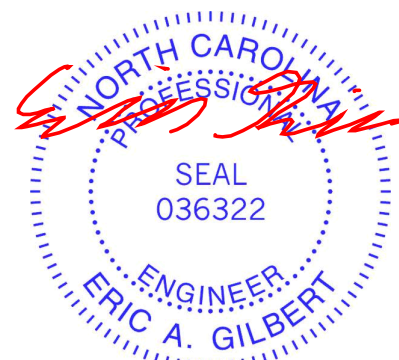


LUMBER		WEBS	3-26=-749/745, 4-26=-413/344,
TOP CHORD	2x6 SP No.2		4-24=-478/576, 8-22=-64/366,
BOT CHORD	2x6 SP No.2		10-20=-127/499, 11-20=-754/497,
WEBS	2x4 SP No.3		3-27=-189/226, 5-23=-763/1802,
WEDGE	Left: 2x4 SP No.3		5-24=-2104/997, 7-23=-1215/654,
SLIDER	Right 2x6 SP No.2 -- 1-11-12		7-22=-212/775, 11-18=0/363,
			13-18=-128/194, 13-17=-55/146,
BRACING			9-22=-662/302, 9-20=-149/365
TOP CHORD	Structural wood sheathing directly applied to		

NOTES

- 1) Unbalanced roof live loads have been considered for this design.
- 2) Wind: ASCE 7-10; Vult=130mph (3-second gust)
Vasd=103mph; TCDL=6.0psf; BCDL=6.0psf; h=25ft; Cat. II; Exp C; Enclosed; MWFRS (envelope) exterior zone and C-C Exterior (2) zone; cantilever left and right exposed ; end vertical left and right exposed; porch left exposed; C-C for members and forces & MWFRS for reactions shown; Lumber DOL=1.60 plate grip
DOL=1.60
- 3) Provide adequate drainage to prevent water ponding.
- 4) All plates are 5x8 (=) MT20 unless otherwise indicated.
- 5) This truss has been designed for a 10.0 psf bottom chord live load nonconcurrent with any other live loads.
- 6) * This truss has been designed for a live load of 20.0psf on the bottom chord in all areas where a rectangle 3-06-00 tall by 2-00-00 wide will fit between the bottom chord and any other members, with BCDL = 10.0psf.
- 7) Provide mechanical connection (by others) of truss to bearing plate at joint(s) 2.
- 8) Provide mechanical connection (by others) of truss to bearing plate capable of withstanding 324 lb uplift at joint 2, 643 lb uplift at joint 24 and 460 lb uplift at joint 15.
- 9) Graphical purlin representation does not depict the size or the orientation of the purlin along the top and/or bottom chord.

LOAD CASE(S) Standard



November 5.2025

 WARNING - Verify design parameters and READ NOTES ON THIS AND INCLUDED MITEK REFERENCE PAGE MII-7473 rev. 1/2/2023 BEFORE USE

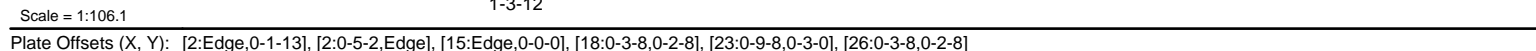
WARNING - Verify design parameters and READ NOTES ON THIS AND INCLUDED MITER REFERENCE PAGE MIT-7473 (rev. 1/2/2023) BEFORE USE.


Design valid for use only with MiTek® connectors. This design is based only on parameters shown, and is for an individual building component, not a truss system. Before use, the building designer must verify the applicability of design parameters and properly incorporate this design into the overall building design. Bracing indicated is to prevent buckling of individual truss web and/or chord members only. Additional temporary and permanent bracing is always required for stability and to prevent collapse with possible personal injury and property damage. For general guidance regarding the fabrication, storage, delivery, erection and bracing of trusses and truss systems, see **ANSI/TPI1 Quality Criteria and DSB-22** available from Truss Plate Institute (www.tpinet.org) and **BCSI Building Component Safety Information** available from the Structural Building Components Association (www.sbcacompnents.com)

ENGINEERING BY
TRENCO
A Mitak Affiliat

818 Soundside Road
Edenton, NC 27932

Builders FirstSource (Sumter, SC), Sumter, SC - 29153, Run: 8.83 S Sep 3 2025 Print: 8.830 S Sep 3 2025 MiTek Industries, Inc. Tue Nov 04 11:28:34 Page: 1
ID:GYlQkviJC5Dul?NwSxbqZmvlvOQ-RfC?PsB70Hq3NSqPanL8w3uITXbGKWrcDoi7J4zJC?f



LUMBER		<p>1) 2-ply truss to be connected together with 10d (0.131"x3") nails as follows: Top chords connected as follows: 2x6 - 2 rows staggered at 0-9-0 oc. Bottom chords connected as follows: 2x6 - 2 rows staggered at 0-7-0 oc. Web connected as follows: 2x4 - 1 row at 0-9-0 oc.</p> <p>2) All loads are considered equally applied to all plies, except if noted as front (F) or back (B) face in the LOAD CASE(S) section. Ply to ply connections have been provided to distribute only loads noted as (F) or (B), unless otherwise indicated.</p> <p>3) Unbalanced roof live loads have been considered for this design.</p> <p>4) Wind: ASCE 7-10; Vult=130mph (3-second gust) Vasd=103mph; TCDL=6.0psf; BCDL=6.0psf; h=25ft; Cat. II; Exp C; Enclosed; MWFRS (envelope) exterior zone; cantilever left and right exposed; end vertical left and right exposed; porch left exposed; Lumber DOL=1.60 plate grip DOL=1.60</p> <p>5) Provide adequate drainage to prevent water ponding.</p> <p>6) All plates are 5x8 (=) MT20 unless otherwise indicated.</p> <p>7) This truss has been designed for a 10.0 psf bottom chord live load nonconcurrent with any other live loads.</p> <p>8) * This truss has been designed for a live load of 20.0psf on the bottom chord in all areas where a rectangle 3'-06"-00" tall by 2'-00"-00" wide will fit between the bottom chord and any other members, with BCDL = 10.0psf.</p> <p>9) Provide mechanical connection (by others) of truss to bearing plate at joint(s) 2.</p> <p>10) Provide mechanical connection (by others) of truss to bearing plate capable of withstanding 363 lb uplift at joint 2 and 268 lb uplift at joint 15.</p> <p>11) Load case(s) 1 has/have been modified. Building designer must review loads to verify that they are correct for the intended use of this truss.</p> <p>12) Graphical purlin representation does not depict the size or the orientation of the purlin along the top and/or bottom chord.</p>
TOP CHORD	2x6 SP No.2	
BOT CHORD	2x6 SP No.2	
WEBS	2x4 SP No.2	
WEDGE	Left: 2x4 SP No.3	
SLIDER	Right 2x6 SP No.2 -- 1-11-12	<p>13) Hanger(s) or other connection device(s) shall be provided sufficient to support concentrated load(s) 2750 lb down at 20-8-0 on bottom chord. The design/selection of such connection device(s) is the responsibility of others.</p> <p>LOAD CASE(S) Standard</p> <p>1) Dead + Roof Live (balanced): Lumber Increase=1.15, Plate Increase=1.15 Uniform Loads (lb/ft) Vert: 1-4=-60, 4-8=-60, 8-10=-60, 10-16=-60, 28-31=-20 Concentrated Loads (lb) Vert: 23=-2750 (B)</p>
BRACING		
TOP CHORD	Structural wood sheathing directly applied or 6-0-0 oc purlins, except 2-0-0 oc purlins (6-0-0 max.): 8-10.	
BOT CHORD	Rigid ceiling directly applied or 6-0-0 oc bracing.	
REACTIONS		
	(size) 2=0-3-0, 15=0-3-8, 24=0-3-8	<p>FORCES (lb) - Maximum Compression/Maximum Tension</p> <p>TOP CHORD 1-2=0/8, 2-3=-140/601, 3-4=0/850, 4-5=-78/1131, 5-7=-2936/0, 7-8=-2581/0, 8-9=-2234/0, 9-10=-2230/200, 10-11=-2605/147, 11-13=-3146/276, 13-15=-3182/365, 15-16=0/20</p> <p>BOT CHORD 2-27=-494/196, 26-27=-494/167, 24-26=-807/103, 23-24=-967/276, 22-23=0/2544, 20-22=0/2300, 18-20=0/2765, 17-18=-234/2724, 15-17=-234/2724</p> <p>WEBS 3-27=-571/254, 3-26=-870/469, 4-26=-278/292, 4-24=-249/409, 8-22=0/845, 10-20=0/799, 5-24=-4538/0, 7-22=-689/0, 7-23=-30/834, 5-23=0/4275, 9-22=-211/490, 9-20=-405/59, 11-20=-735/452, 11-18=-9/349, 13-18=-40/263, 13-17=-113/97</p> <p>NOTES</p>
	Max Horiz 2=240 (LC 8)	
	Max Uplift 2=-363 (LC 4), 15=-268 (LC 9)	
	Max Grav 2=278 (LC 19), 15=2041 (LC 1), 24=5081 (LC 1)	
FORCES		
TOP CHORD	1-2=0/8, 2-3=-140/601, 3-4=0/850, 4-5=-78/1131, 5-7=-2936/0, 7-8=-2581/0, 8-9=-2234/0, 9-10=-2230/200, 10-11=-2605/147, 11-13=-3146/276, 13-15=-3182/365, 15-16=0/20	
BOT CHORD	2-27=-494/196, 26-27=-494/167, 24-26=-807/103, 23-24=-967/276, 22-23=0/2544, 20-22=0/2300, 18-20=0/2765, 17-18=-234/2724, 15-17=-234/2724	
WEBS	3-27=-571/254, 3-26=-870/469, 4-26=-278/292, 4-24=-249/409, 8-22=0/845, 10-20=0/799, 5-24=-4538/0, 7-22=-689/0, 7-23=-30/834, 5-23=0/4275, 9-22=-211/490, 9-20=-405/59, 11-20=-735/452, 11-18=-9/349, 13-18=-40/263, 13-17=-113/97	
NOTES		



November 5.2025

 WARNING - Verify design parameters and READ NOTES ON THIS AND INCLUDED MITEK REFERENCE PAGE MII-7473 rev. 1/2/2023 BEFORE USE.

Design valid for use only with MiTek® connectors. This design is based only upon parameters shown, and is for an individual building component, not a truss system. Before use, the building designer must verify the applicability of design parameters and properly incorporate this design into the overall building design. Bracing indicated is to prevent buckling of individual truss web and/or chord members only. Additional temporary and permanent bracing is always required for stability and to prevent collapse with possible personal injury and property damage. For general guidance regarding the fabrication, storage, delivery, erection and bracing of trusses and truss systems, see **ANSI/TPI1 Quality Criteria and DSB-22** available from Truss Plate Institute (www.tpinet.org) and **BCSI Building Component Safety Information** available from the Structural Building Components Association (www.sbcacompnents.com)

ENGINEERING BY
TRENCO
A MiTek Affiliat

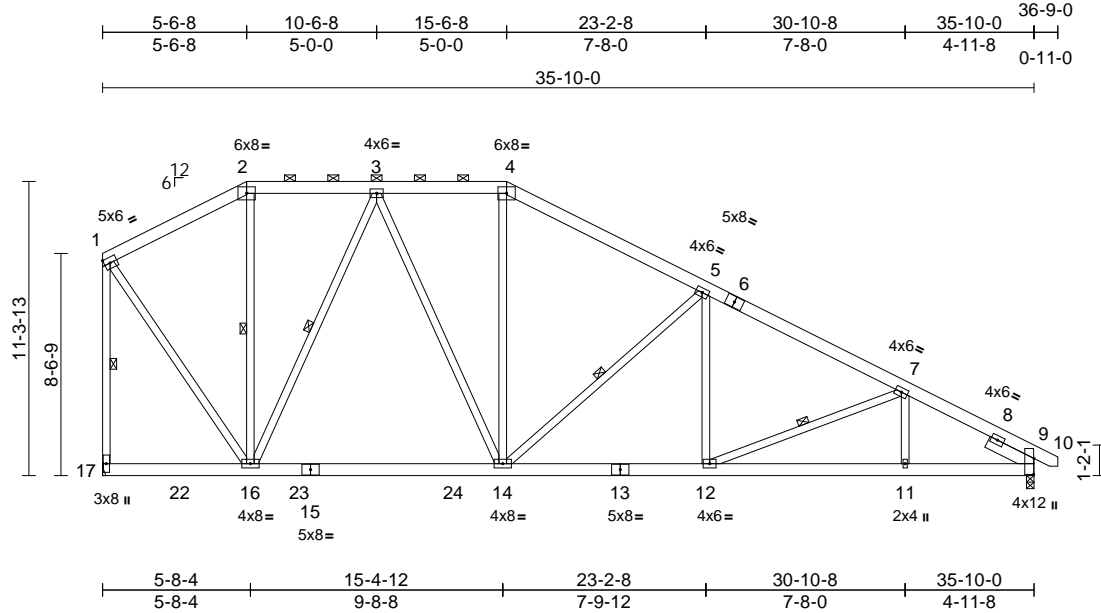
818 Soundside Road
Edenton, NC 27932

Job	Truss	Truss Type	Qty	Ply	JSJ, Smith Prime Plan (8-20-25)	
4939005	A05	Piggyback Base	3	1	Job Reference (optional)	I77536767

Builders FirstSource (Sumter, SC), Sumter, SC - 29153,

Run: 8.83 S Sep 3 2025 Print: 8.830 S Sep 3 2025 MiTek Industries, Inc. Tue Nov 04 11:28:34
ID:y?R42VnRjRMSUUlao5NeQyIvJB-RfC?PsB70Hq3NSgPqnL8w3ulTXbGKWCrDcoi7J4zJC?f

Page: 1



Scale = 1:88.6

Plate Offsets (X, Y): [9:0-7-7,0-0-4]

Loading	(psf)	Spacing	2-0-0	CSI		DEFL	in	(loc)	l/defl	L/d	PLATES	GRIP
TCLL (roof)	20.0	Plate Grip DOL	1.15	TC	0.49	Vert(LL)	-0.12	14-16	>999	360	MT20	244/190
TCDL	10.0	Lumber DOL	1.15	BC	0.76	Vert(CT)	-0.21	14-16	>999	240		
BCLL	0.0 *	Rep Stress Incr	YES	WB	0.79	Horz(CT)	0.05	9	n/a	n/a		
BCDL	10.0	Code	IRC2015/TPI2014	Matrix-MS		Wind(LL)	0.09	11-12	>999	240	Weight: 313 lb	FT = 20%

LUMBER

TOP CHORD 2x6 SP No.2
BOT CHORD 2x6 SP No.2
WEBS 2x4 SP No.3 *Except* 17-1:2x4 SP No.2
SLIDER Right 2x6 SP No.2 -- 1-11-12

BRACING

TOP CHORD Structural wood sheathing directly applied or 4-0-14 oc purlins, except end verticals, and 2-0-0 oc purlins (6-0-0 max.): 2-4.
BOT CHORD Rigid ceiling directly applied or 8-11-14 oc bracing.
WEBS 1 Row at midpt 2-16, 5-14, 1-17, 3-16, 7-12

REACTIONS

(size) 9=0-3-8, 17= Mechanical
Max Horiz 17=-467 (LC 13)
Max Uplift 9=-388 (LC 13), 17=-294 (LC 13)
Max Grav 9=1473 (LC 1), 17=1496 (LC 2)

FORCES

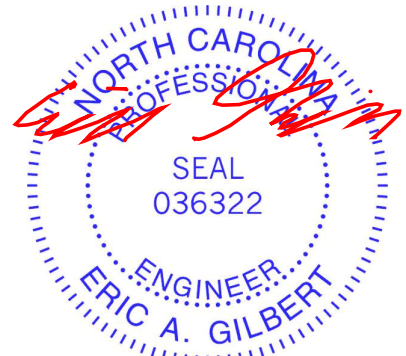
(lb) - Maximum Compression/Maximum Tension
TOP CHORD 1-2=-785/377, 2-3=-663/406, 3-4=-1196/671, 4-5=-1434/662, 5-7=-2000/807, 7-9=-2217/849, 9-10=0/20, 1-17=-1424/639
BOT CHORD 16-17=-151/465, 14-16=-42/993, 12-14=-443/1734, 11-12=-643/1894, 9-11=-643/1894
WEBS 2-16=-57/138, 4-14=-30/330, 5-14=-766/506, 1-16=-439/1170, 3-16=-850/432, 3-14=-225/553, 5-12=-1/377, 7-12=-187/219, 7-11=-28/146

NOTES

1) Unbalanced roof live loads have been considered for this design.

- 2) Wind: ASCE 7-10; Vult=130mph (3-second gust) Vasd=103mph; TCDL=6.0psf; BCDL=6.0psf; h=25ft; Cat. II; Exp C; Enclosed; MWFRS (envelope) exterior zone and C-C Exterior (2) zone; cantilever left and right exposed; end vertical right exposed; C-C for members and forces & MWFRS for reactions shown; Lumber DOL=1.60 plate grip DOL=1.60
- 3) Provide adequate drainage to prevent water ponding.
- 4) This truss has been designed for a 10.0 psf bottom chord live load nonconcurrent with any other live loads.
- 5) * This truss has been designed for a live load of 20.0psf on the bottom chord in all areas where a rectangle 3-06-00 tall by 2-00-00 wide will fit between the bottom chord and any other members, with BCDL = 10.0psf.
- 6) Refer to girder(s) for truss to truss connections.
- 7) Provide mechanical connection (by others) of truss to bearing plate capable of withstanding 294 lb uplift at joint 17 and 388 lb uplift at joint 9.
- 8) Graphical purlin representation does not depict the size or the orientation of the purlin along the top and/or bottom chord.

LOAD CASE(S) Standard



November 5, 2025

WARNING - Verify design parameters and READ NOTES ON THIS AND INCLUDED MITEK REFERENCE PAGE MII-7473 rev. 1/2/2023 BEFORE USE.

Design valid for use only with MiTek® connectors. This design is based only upon parameters shown, and is for an individual building component, not a truss system. Before use, the building designer must verify the applicability of design parameters and properly incorporate this design into the overall building design. Bracing indicated is to prevent buckling of individual truss web and/or chord members only. Additional temporary and permanent bracing is always required for stability and to prevent collapse with possible personal injury and property damage. For general guidance regarding the fabrication, storage, delivery, erection and bracing of trusses and truss systems, see **ANSI/TPI1 Quality Criteria and DSB-22** available from Truss Plate Institute (www.tpinst.org) and **BCSI Building Component Safety Information** available from the Structural Building Component Association (www.sbcacomponents.com)

ENGINEERING BY
TRENCO
A MiTek Affiliate

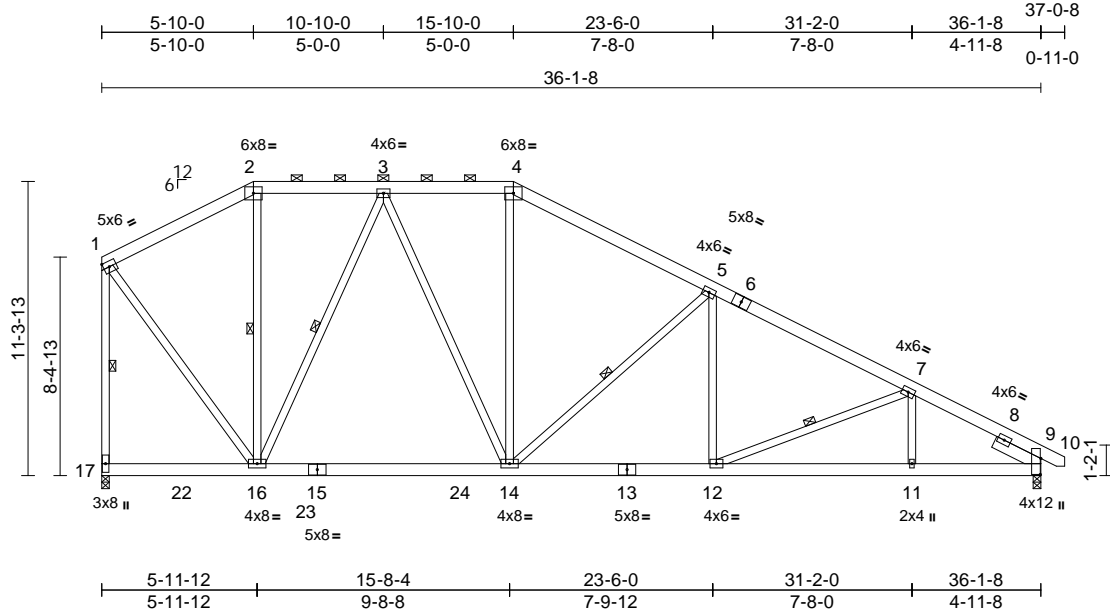
818 Soundside Road
Edenton, NC 27932

Job	Truss	Truss Type	Qty	Ply	JSJ, Smith Prime Plan (8-20-25)	
4939005	A06	Piggyback Base	1	1	Job Reference (optional)	I77536768

Builders FirstSource (Sumter, SC), Sumter, SC - 29153,

Run: 8.83 S Sep 3 2025 Print: 8.830 S Sep 3 2025 MiTek Industries, Inc. Tue Nov 04 11:28:35
ID:71VW405hkHFS6kdLkKa0qOylvK4-RfC?PsB70Hq3NSgPqnL8w3uITXbGKWrCDoi7J4zJC?i

Page: 1



Scale = 1:88.6

Plate Offsets (X, Y): [9:0-7-7,0-0-4]

Loading	(psf)	Spacing	2-0-0	CSI		DEFL	in	(loc)	l/defl	L/d	PLATES	GRIP
TCLL (roof)	20.0	Plate Grip DOL	1.15	TC	0.50	Vert(LL)	-0.12	14-16	>999	360	MT20	244/190
TCDL	10.0	Lumber DOL	1.15	BC	0.77	Vert(CT)	-0.21	14-16	>999	240		
BCLL	0.0 *	Rep Stress Incr	YES	WB	0.79	Horz(CT)	0.05	9	n/a	n/a		
BCDL	10.0	Code	IRC2015/TPI2014	Matrix-MS		Wind(LL)	0.09	11-12	>999	240	Weight: 314 lb	FT = 20%

LUMBER

TOP CHORD 2x6 SP No.2
BOT CHORD 2x6 SP No.2
WEBS 2x4 SP No.3 *Except* 17-1:2x4 SP No.2
SLIDER Right 2x6 SP No.2 -- 1-11-12

BRACING

TOP CHORD Structural wood sheathing directly applied or 4-0-8 oc purlins, except end verticals, and 2-0-0 oc purlins (6-0-0 max.): 2-4.
BOT CHORD Rigid ceiling directly applied or 8-11-0 oc bracing.
WEBS 1 Row at midpt 2-16, 5-14, 1-17, 7-12, 3-16

REACTIONS

(size) 9=0-3-8, 17=0-3-8
Max Horiz 17=-462 (LC 13)
Max Uplift 9=-391 (LC 13), 17=-293 (LC 13)
Max Grav 9=1485 (LC 1), 17=1508 (LC 2)

FORCES

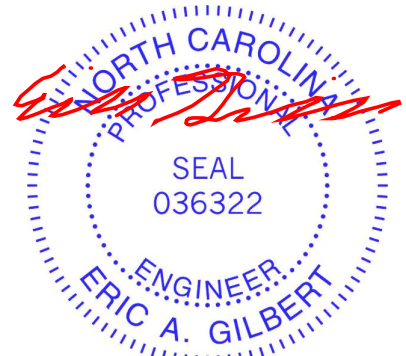
(lb) - Maximum Compression/Maximum Tension
TOP CHORD 1-2=-825/395, 2-3=-697/426, 3-4=-1218/684, 4-5=-1458/677, 5-7=-2023/821, 7-9=-2237/861, 9-10=0/20, 1-17=-1428/644
BOT CHORD 16-17=-147/461, 14-16=-48/1013, 12-14=-456/1755, 11-12=-653/1911, 9-11=-653/1911
WEBS 2-16=-54/150, 4-14=-36/338, 5-14=-766/505, 1-16=-438/1173, 5-12=-1/376, 7-12=-184/218, 7-11=-29/145, 3-14=-221/543, 3-16=-838/422

NOTES

1) Unbalanced roof live loads have been considered for this design.

- 2) Wind: ASCE 7-10; Vult=130mph (3-second gust) Vasd=103mph; TCDL=6.0psf; BCDL=6.0psf; h=25ft; Cat. II; Exp C; Enclosed; MWFRS (envelope) exterior zone and C-C Exterior (2) zone; cantilever left and right exposed; end vertical right exposed; C-C for members and forces & MWFRS for reactions shown; Lumber DOL=1.60 plate grip DOL=1.60
- 3) Provide adequate drainage to prevent water ponding.
- 4) This truss has been designed for a 10.0 psf bottom chord live load nonconcurrent with any other live loads.
- 5) * This truss has been designed for a live load of 20.0psf on the bottom chord in all areas where a rectangle 3-06-00 tall by 2-00-00 wide will fit between the bottom chord and any other members, with BCDL = 10.0psf.
- 6) Provide mechanical connection (by others) of truss to bearing plate capable of withstanding 293 lb uplift at joint 17 and 391 lb uplift at joint 9.
- 7) Graphical purlin representation does not depict the size or the orientation of the purlin along the top and/or bottom chord.

LOAD CASE(S) Standard



November 5, 2025

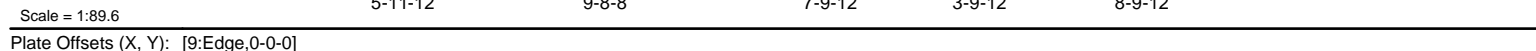
WARNING - Verify design parameters and READ NOTES ON THIS AND INCLUDED MITEK REFERENCE PAGE MII-7473 rev. 1/2/2023 BEFORE USE.

Design valid for use only with MiTek® connectors. This design is based only upon parameters shown, and is for an individual building component, not a truss system. Before use, the building designer must verify the applicability of design parameters and properly incorporate this design into the overall building design. Bracing indicated is to prevent buckling of individual truss web and/or chord members only. Additional temporary and permanent bracing is always required for stability and to prevent collapse with possible personal injury and property damage. For general guidance regarding the fabrication, storage, delivery, erection and bracing of trusses and truss systems, see **ANSI/TPI1 Quality Criteria and DSB-22** available from Truss Plate Institute (www.tpinst.org) and **BCSI Building Component Safety Information** available from the Structural Building Component Association (www.sbcacomponents.com)

ENGINEERING BY
TRENCO
A MiTek Affiliate

818 Soundside Road
Edenton, NC 27932

Builders FirstSource (Sumter, SC), Sumter, SC - 29153, Run: 8.83 S Sep 3 2025 Print: 8.830 S Sep 3 2025 MiTek Industries, Inc. Tue Nov 04 11:28:35 Page: 1
ID:71VW405hkHFS6kdKkA0aOvlyK4-RfC?PsB70Ha3NSaPqnL8w3tUXhGKWrcDoi7J4zJC?i



LUMBER		2) Wind: ASCE 7-10; Vult=130mph (3-second gust) Vasd=103mph; TCDL=6.0psf; BCDL=6.0psf; h=25ft; Cat. II; Exp C; Enclosed; MWFRS (envelope) exterior zone and C-C Exterior (2) zone; cantilever left and right exposed ; end vertical right exposed; porch right exposed;C-C for members and forces & MWFRS for reactions shown; Lumber DOL=1.60 plate grip DOL=1.60
TOP CHORD	2x6 SP No.2	
BOT CHORD	2x6 SP No.2	
WEBS	2x4 SP No.3 *Except* 17-1:2x4 SP No.2	
SLIDER	Right 2x6 SP No.2 -- 1-11-12	
BRACING		3) Provide adequate drainage to prevent water ponding.
TOP CHORD	Structural wood sheathing directly applied or 6-0-0 oc purlins, except end verticals, and 2-0-0 oc purlins (6-0-0 max.): 2-4.	4) This truss has been designed for a 10.0 psf bottom chord live load nonconcurrent with any other live loads.
BOT CHORD	Rigid ceiling directly applied or 10-0-0 oc bracing.	5) * This truss has been designed for a live load of 20.0psf on the bottom chord in all areas where a rectangle 3-06-00 tall by 2-00-00 wide will fit between the bottom chord and any other members, with BCDL = 10.0psf.
WEBS	1 Row at midpt 2-16, 1-17, 3-16	6) Provide mechanical connection (by others) of truss to bearing plate capable of withstanding 253 lb uplift at joint 17, 269 lb uplift at joint 9 and 162 lb uplift at joint 11.
REACTIONS	(size) 9=0-3-0, 11=0-3-8, 17=0-3-8	
	Max Horiz 17=-462 (LC 13)	
	Max Uplift 9=-269 (LC 13), 11=-162 (LC 13), 17=-253 (LC 13)	
	Max Grav 9=598 (LC 24), 11=1248 (LC 2), 17=1216 (LC 2)	
FORCES		7) Graphical purlin representation does not depict the size or the orientation of the purlin along the top and/or bottom chord.
TOP CHORD	(lb) - Maximum Compression/Maximum Tension 1-2=-650/364, 2-3=-539/398, 3-4=-805/614, 4-5=-990/589, 5-7=-902/674, 7-9=-575/620, 9-10=0/20, 1-17=-1136/592	
BOT CHORD	16-17=-147/461, 14-16=-64/788, 12-14=-256/754, 11-12=-386/437, 9-11=-386/437	
WEBS	2-16=-105/113, 4-14=0/164, 1-16=-391/908, 3-14=-183/254, 3-16=-533/366, 5-14=-49/333, 7-11=-987/186, 5-12=-377/37, 7-12=0/603	
LOAD CASE(S)		Standard

WARNING - Verify design parameters and READ NOTES ON THIS AND INCLUDED MITEK REFERENCE PAGE MII-7473 rev. 1/2/2023 BEFORE USE.

Design valid for use only with MiTek® connectors. This design is based only upon parameters shown, and is for an individual building component, not a truss system. Before use, the building designer must verify the applicability of design parameters and properly incorporate this design into the overall building design. Bracing indicated is to prevent buckling of individual truss web and/or chord members only. Additional temporary and permanent bracing is always required for stability and to prevent collapse with possible personal injury and property damage. For general guidance regarding the fabrication, storage, delivery, erection and bracing of trusses and truss systems, see **ANSI/TPI1 Quality Criteria and DSB-22** available from Truss Plate Institute (www.tpinst.org) and **BCSI Building Component Safety Information** available from the Structural Building Component Association (www.sbcacomponents.com).

ENGINEERING BY
TRENCO
A MiTek Affiliate

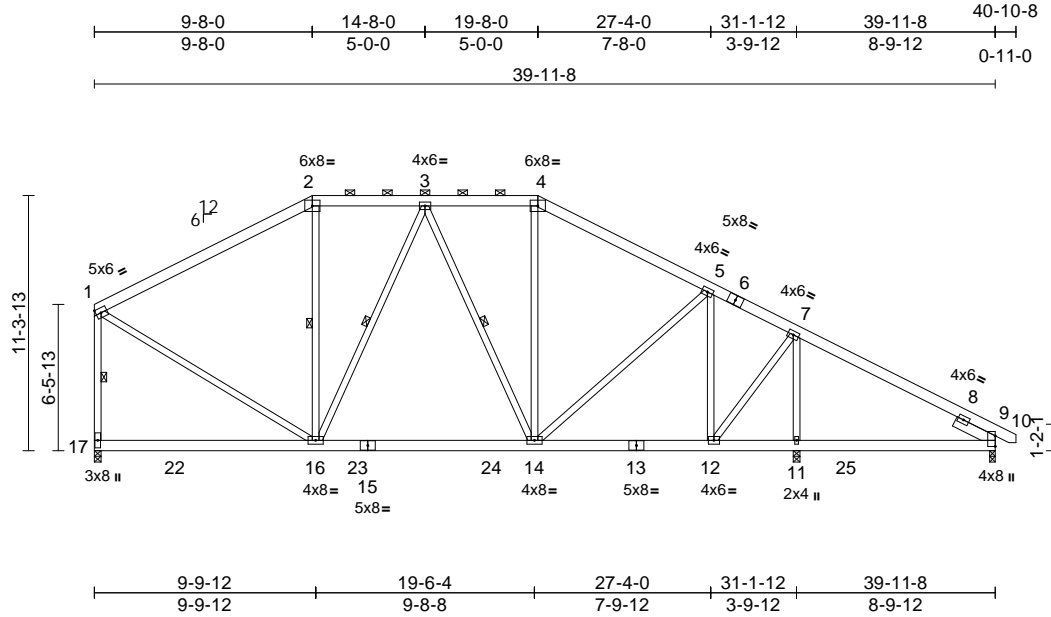
818 Soundside Road
Edenton, NC 27932

Job	Truss	Truss Type	Qty	Ply	JSJ, Smith Prime Plan (8-20-25)	
4939005	A08	Piggyback Base	4	1	Job Reference (optional)	I77536770

Builders FirstSource (Sumter, SC), Sumter, SC - 29153,

Run: 8.83 S Sep 3 2025 Print: 8.830 S Sep 3 2025 MiTek Industries, Inc. Tue Nov 04 11:28:36
ID:uudG?6cYQ5AjG6UHihynzsyIvR9-RfC?PsB70Hq3NSgPqnL8w3uITXbGKwRCDoi7J4zJC?f

Page: 1



Scale = 1:102.2

Plate Offsets (X, Y): [9:Edge,0-0-0]

Loading	(psf)	Spacing	2-0-0	CSI		DEFL	in	(loc)	l/defl	L/d	PLATES	GRIP
TCLL (roof)	20.0	Plate Grip DOL	1.15	TC	0.69	Vert(LL)	-0.10	14-16	>999	360	MT20	244/190
TCDL	10.0	Lumber DOL	1.15	BC	0.48	Vert(CT)	-0.15	14-16	>999	240		
BCLL	0.0 *	Rep Stress Incr	YES	WB	0.93	Horz(CT)	0.02	11	n/a	n/a		
BCDL	10.0	Code	IRC2015/TPI2014	Matrix-MS		Wind(LL)	0.08	11-20	>999	240	Weight: 333 lb	FT = 20%

LUMBER

TOP CHORD 2x6 SP No.2
BOT CHORD 2x6 SP No.2
WEBS 2x4 SP No.3 *Except* 17-1:2x4 SP No.2
SLIDER Right 2x6 SP No.2 -- 1-11-12

BRACING

TOP CHORD Structural wood sheathing directly applied or 4-8-11 oc purlins, except end verticals, and 2-0-0 oc purlins (6-0-0 max.): 2-4.
BOT CHORD Rigid ceiling directly applied or 10-0-0 oc bracing.

WEBS 1 Row at midpt 2-16, 1-17, 3-16, 3-14

REACTIONS (size) 9=0-3-0, 11=0-3-8, 17=0-3-8
Max Horiz 17=406 (LC 13)
Max Uplift 9=275 (LC 13), 11=199 (LC 13), 17=272 (LC 12)
Max Grav 9=597 (LC 24), 11=1405 (LC 2), 17=1342 (LC 2)

FORCES

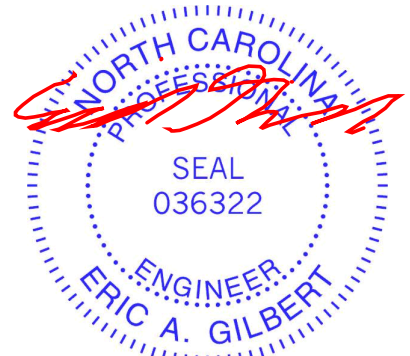
(lb) - Maximum Compression/Maximum Tension
TOP CHORD 1-2=-1048/554, 2-3=-866/615, 3-4=-973/729, 4-5=-1176/718, 5-7=-1002/744, 7-9=-575/630, 9-10=0/20, 1-17=-1212/643
BOT CHORD 16-17=-91/399, 14-16=-125/965, 12-14=-318/842, 11-12=-395/437, 9-11=-395/437
WEBS 2-16=-112/196, 4-14=-21/222, 1-16=-381/993, 3-16=-371/243, 3-14=-155/150, 5-14=-32/347, 7-11=-1144/262, 5-12=-489/66, 7-12=0/738

NOTES

1) Unbalanced roof live loads have been considered for this design.

- Wind: ASCE 7-10; Vult=130mph (3-second gust) Vasd=103mph; TCDL=6.0psf; BCDL=6.0psf; h=25ft; Cat. II; Exp C; Enclosed; MWFRS (envelope) exterior zone and C-C Exterior (2) zone; cantilever left and right exposed; end vertical right exposed; porch right exposed; C-C for members and forces & MWFRS for reactions shown; Lumber DOL=1.60 plate grip DOL=1.60
- Provide adequate drainage to prevent water ponding.
- This truss has been designed for a 10.0 psf bottom chord live load nonconcurrent with any other live loads.
- * This truss has been designed for a live load of 20.0psf on the bottom chord in all areas where a rectangle 3-06-00 tall by 2-00-00 wide will fit between the bottom chord and any other members, with BCDL = 10.0psf.
- Provide mechanical connection (by others) of truss to bearing plate capable of withstanding 272 lb uplift at joint 17, 275 lb uplift at joint 9 and 199 lb uplift at joint 11.
- Graphical purlin representation does not depict the size or the orientation of the purlin along the top and/or bottom chord.

LOAD CASE(S) Standard



November 5, 2025

WARNING - Verify design parameters and READ NOTES ON THIS AND INCLUDED MITEK REFERENCE PAGE MII-7473 rev. 1/2/2023 BEFORE USE.

Design valid for use only with MiTek® connectors. This design is based only upon parameters shown, and is for an individual building component, not a truss system. Before use, the building designer must verify the applicability of design parameters and properly incorporate this design into the overall building design. Bracing indicated is to prevent buckling of individual truss web and/or chord members only. Additional temporary and permanent bracing is always required for stability and to prevent collapse with possible personal injury and property damage. For general guidance regarding the fabrication, storage, delivery, erection and bracing of trusses and truss systems, see **ANSI/TPI1 Quality Criteria and DSB-22** available from Truss Plate Institute (www.tpinst.org) and **BCSI Building Component Safety Information** available from the Structural Building Component Association (www.sbcacomponents.com)

ENGINEERING BY
TRENCO
A MiTek Affiliate

818 Soundside Road
Edenton, NC 27932

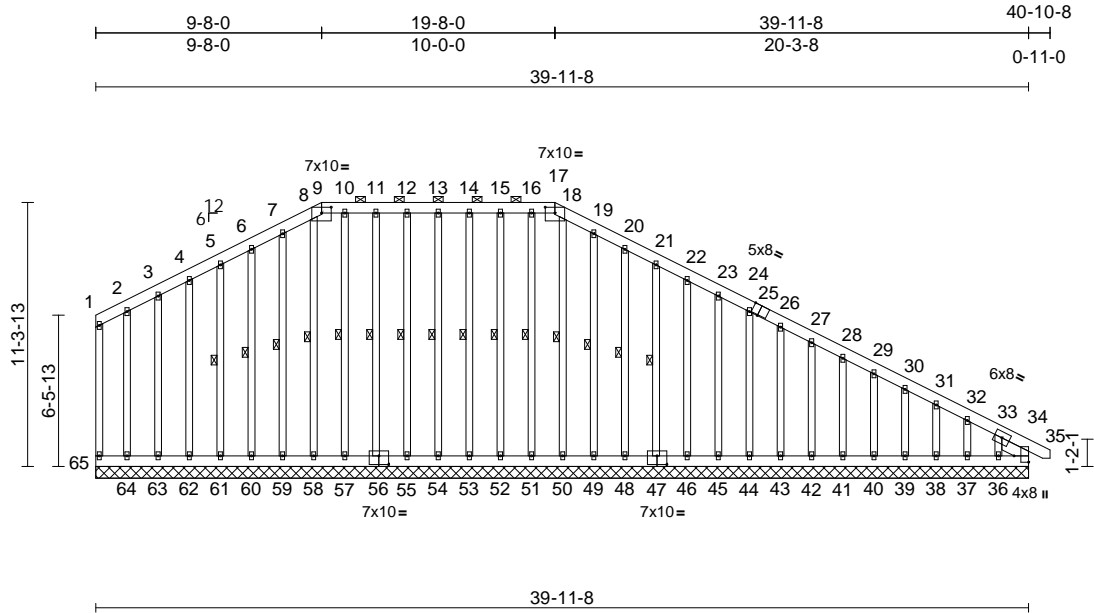
Job	Truss	Truss Type	Qty	Ply	JSJ, Smith Prime Plan (8-20-25)	177536771
4939005	A09	Piggyback Base Supported Gable	1	1	Job Reference (optional)	

Builders FirstSource (Sumter, SC), Sumter, SC - 29153,

Run: 8.83 S Sep 3 2025 Print: 8.830 S Sep 3 2025 MiTek Industries, Inc. Tue Nov 04 11:28:36

Page: 1

ID:e2DrixJxV4_8Zf_YRNwwQcyhXz-RfC?PsB70Hq3NSgPqnL8w3ulTXbGKWrcDoi7J4zJC?f



Scale = 1:98.7

Plate Offsets (X, Y): [9:0-5-0,0-3-0], [17:0-5-0,0-3-0], [25:0-3-10,Edge], [34:Edge,0-7-8], [47:0-5-0,0-4-8], [56:0-5-0,0-4-8]

Loading	(psf)	Spacing	2-0-0	CSI	DEFL	in	(loc)	l/defl	L/d	PLATES	GRIP
TCLL (roof)	20.0	Plate Grip DOL	1.15	TC	0.06	Vert(LL)	n/a	-	n/a	999	244/190
TCDL	10.0	Lumber DOL	1.15	BC	0.06	Vert(CT)	n/a	-	n/a	999	
BCLL	0.0*	Rep Stress Incr	YES	WB	0.10	Horz(CT)	0.02	34	n/a	n/a	
BCDL	10.0	Code	IRC2015/TPI2014	Matrix-MS							
Weight: 529 lb FT = 20%											

LUMBER

TOP CHORD	2x6 SP No.2
BOT CHORD	2x6 SP No.2
WEBS	2x4 SP No.2
OTHERS	2x4 SP No.3
SLIDER	Right 2x6 SP No.2 -- 1-4-7

BRACING

TOP CHORD	Structural wood sheathing directly applied or 6-0-0 oc purlins, except end verticals, and 2-0-0 oc purlins (6-0-0 max.): 9-17.
BOT CHORD	Rigid ceiling directly applied or 6-0-0 oc bracing, Except: 10-0-0 oc bracing: 64-65,63-64,62-63,61-62,60-61,59-60,58-59, 57-58,56-57.
WEBS	1 Row at midpt 13-54, 14-53, 15-52, 16-51, 18-50, 19-49, 20-48, 21-47, 12-55, 11-56, 10-57, 8-58, 7-59, 6-60, 5-61

REACTIONS (size)

34=39-11-8, 36=39-11-8,
37=39-11-8, 38=39-11-8,
39=39-11-8, 40=39-11-8,
41=39-11-8, 42=39-11-8,
43=39-11-8, 44=39-11-8,
45=39-11-8, 46=39-11-8,
47=39-11-8, 48=39-11-8,
49=39-11-8, 50=39-11-8,
51=39-11-8, 52=39-11-8,
53=39-11-8, 54=39-11-8,
55=39-11-8, 56=39-11-8,
57=39-11-8, 58=39-11-8,
59=39-11-8, 60=39-11-8,
61=39-11-8, 62=39-11-8,
63=39-11-8, 64=39-11-8,
65=39-11-8

Max Horiz 65=406 (LC 13)

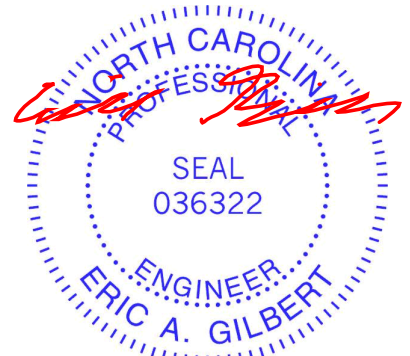
FORCES

(lb) - Maximum Compression/Maximum Tension

Max Uplift 34=45 (LC 11), 36=268 (LC 13),
37=54 (LC 13), 38=55 (LC 13),
39=54 (LC 13), 40=55 (LC 13),
41=55 (LC 13), 42=55 (LC 13),
43=55 (LC 13), 44=55 (LC 13),
45=55 (LC 13), 46=56 (LC 13),
47=55 (LC 13), 48=59 (LC 13),
49=46 (LC 13), 50=6 (LC 8),
51=22 (LC 8), 52=37 (LC 8),
53=41 (LC 9), 54=39 (LC 9),
55=42 (LC 8), 56=36 (LC 9),
57=18 (LC 8), 59=40 (LC 12),
60=60 (LC 12), 61=57 (LC 12),
62=56 (LC 12), 63=57 (LC 12),
64=52 (LC 12), 65=21 (LC 12)

Max Grav 34=355 (LC 13), 36=122 (LC 20),
37=103 (LC 24), 38=108 (LC 1),
39=106 (LC 1), 40=107 (LC 24),
41=107 (LC 1), 42=107 (LC 24),
43=107 (LC 1), 44=107 (LC 1),
45=107 (LC 24), 46=106 (LC 24),
47=107 (LC 1), 48=107 (LC 1),
49=107 (LC 24), 50=114 (LC 21),
51=107 (LC 24), 52=108 (LC 23),
53=108 (LC 23), 54=107 (LC 23),
55=106 (LC 24), 56=108 (LC 24),
57=109 (LC 1), 58=106 (LC 23),
59=107 (LC 23), 60=107 (LC 23),
61=107 (LC 1), 62=107 (LC 23),
63=109 (LC 1), 64=102 (LC 23),
65=43 (LC 1)

TOP CHORD 1-65=34/36, 1-2=12/23, 2-3=26/63,
3-4=42/107, 4-5=57/150, 5-6=72/194,
6-7=88/239, 7-8=101/275, 8-9=100/269,
9-10=96/277, 10-11=96/277, 11-12=96/276,
12-13=96/276, 13-14=96/276,
14-15=96/276, 15-16=96/276,
16-17=96/276, 17-18=100/269,
18-19=100/274, 19-20=88/245,
20-21=72/221, 21-22=56/198,
22-23=63/176, 23-24=87/154,
24-26=114/132, 26-27=147/119,
27-28=185/108, 28-29=224/98,
29-30=263/92, 30-31=302/92,
31-32=339/91, 32-33=384/107,
33-34=189/55, 34-35=0/20



November 5, 2025

Continued on page 2

WARNING - Verify design parameters and READ NOTES ON THIS AND INCLUDED MITEK REFERENCE PAGE MII-7473 rev. 1/2/2023 BEFORE USE.

Design valid for use only with MiTek® connectors. This design is based only upon parameters shown, and is for an individual building component, not a truss system. Before use, the building designer must verify the applicability of design parameters and properly incorporate this design into the overall building design. Bracing indicated is to prevent buckling of individual truss web and/or chord members only. Additional temporary and permanent bracing is always required for stability and to prevent collapse with possible personal injury and property damage. For general guidance regarding the fabrication, storage, delivery, erection and bracing of trusses and truss systems, see **ANSI/TPI1 Quality Criteria and DSB-22** available from Truss Plate Institute (www.tpinst.org) and **BCSI Building Component Safety Information** available from the Structural Building Component Association (www.sbcacomponents.com)

ENGINEERING BY
TRENCO
A MiTek Affiliate

818 Soundside Road
Edenton, NC 27932

Job	Truss	Truss Type	Qty	Ply	JSJ, Smith Prime Plan (8-20-25)
4939005	A09	Piggyback Base Supported Gable	1	1	I77536771
					Job Reference (optional)

- BOT CHORD

64-65=-112/404, 63-64=-112/404,
62-63=-112/404, 61-62=-112/404,
60-61=-112/404, 59-60=-112/404,
58-59=-112/404, 57-58=-112/404,
55-57=-113/404, 54-55=-113/404,
53-54=-113/404, 52-53=-113/404,
51-52=-113/404, 50-51=-113/404,
49-50=-113/404, 48-49=-113/404,
46-48=-113/404, 45-46=-113/404,
44-45=-113/404, 43-44=-113/404,
42-43=-113/404, 41-42=-113/404,
40-41=-113/404, 39-40=-113/404,
38-39=-113/404, 37-38=-113/404,
36-37=-113/404, 34-36=-113/404
- WEBS

13-54=-80/58, 14-53=-81/59, 15-52=-82/53,
16-51=-80/38, 18-50=-88/22, 19-49=-80/64,
20-48=-80/86, 21-47=-80/81, 22-46=-80/81,
23-45=-80/80, 24-44=-80/80, 26-43=-80/80,
27-42=-80/80, 28-41=-80/80, 29-40=-80/80,
30-39=-80/80, 31-38=-80/77, 32-37=-81/92,
33-36=-94/212, 12-55=-81/60, 11-56=-81/53,
10-57=-80/36, 8-58=-80/4, 7-59=-80/64,
6-60=-80/85, 5-61=-80/82, 4-62=-81/81,
3-63=-83/82, 2-64=-75/73

- NOTES
- 1) Unbalanced roof live loads have been considered for this design.

2) Wind: ASCE 7-10; Vult=130mph (3-second gust)
Vasd=103mph; TCDL=6.0psf; BCDL=6.0psf; h=25ft; Cat. II; Exp C; Enclosed; MWFRS (envelope) exterior zone and C-C Exterior (2) zone; cantilever left and right exposed ; end vertical right exposed;C-C for members and forces & MWFRS for reactions shown; Lumber DOL=1.60 plate grip DOL=1.60

3) Truss designed for wind loads in the plane of the truss only. For studs exposed to wind (normal to the face), see Standard Industry Gable End Details as applicable, or consult qualified building designer as per ANSI/TPI 1.

4) Provide adequate drainage to prevent water ponding.

5) All plates are 2x4 (||) MT20 unless otherwise indicated.

6) Gable requires continuous bottom chord bearing.

7) Gable studs spaced at 1-4-0 oc.

8) This truss has been designed for a 10.0 psf bottom chord live load nonconcurrent with any other live loads.

9) * This truss has been designed for a live load of 20.0psf on the bottom chord in all areas where a rectangle 3-06-00 tall by 2-00-00 wide will fit between the bottom chord and any other members.

10) Provide mechanical connection (by others) of truss to bearing plate capable of withstanding 21 lb uplift at joint 65, 39 lb uplift at joint 54, 41 lb uplift at joint 53, 37 lb uplift at joint 52, 22 lb uplift at joint 51, 6 lb uplift at joint 50, 46 lb uplift at joint 49, 59 lb uplift at joint 48, 55 lb uplift at joint 47, 56 lb uplift at joint 46, 55 lb uplift at joint 45, 55 lb uplift at joint 44, 55 lb uplift at joint 43, 55 lb uplift at joint 42, 55 lb uplift at joint 41, 55 lb uplift at joint 40, 54 lb uplift at joint 39, 55 lb uplift at joint 38, 54 lb uplift at joint 37, 268 lb uplift at joint 36, 42 lb uplift at joint 55, 36 lb uplift at joint 56, 18 lb uplift at joint 57, 40 lb uplift at joint 59, 60 lb uplift at joint 60, 57 lb uplift at joint 61, 56 lb uplift at joint 62, 57 lb uplift at joint 63, 52 lb uplift at joint 64, 45 lb uplift at joint 34 and 45 lb uplift at joint 34.

11) Graphical purlin representation does not depict the size or the orientation of the purlin along the top and/or bottom chord.

LOAD CASE(S)

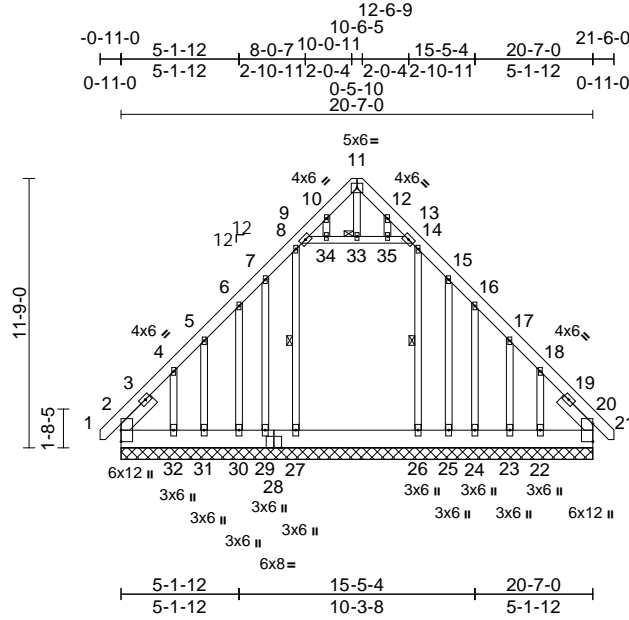
Standard

Job	Truss	Truss Type	Qty	Ply	JSJ, Smith Prime Plan (8-20-25)	177536772
4939005	B01	Attic Supported Gable	1	1	Job Reference (optional)	

Builders FirstSource (Sumter, SC), Sumter, SC - 29153,

Run: 8.83 S Sep 3 2025 Print: 8.830 S Sep 3 2025 MiTek Industries, Inc. Tue Nov 04 11:28:36
ID:VjRfOY2J2qaxIXqAEYU96UyIhUQ-RfC?PsB70Hq3NSgPqnL8w3uITxbGKWrCDoi7J4zJC?f

Page: 1

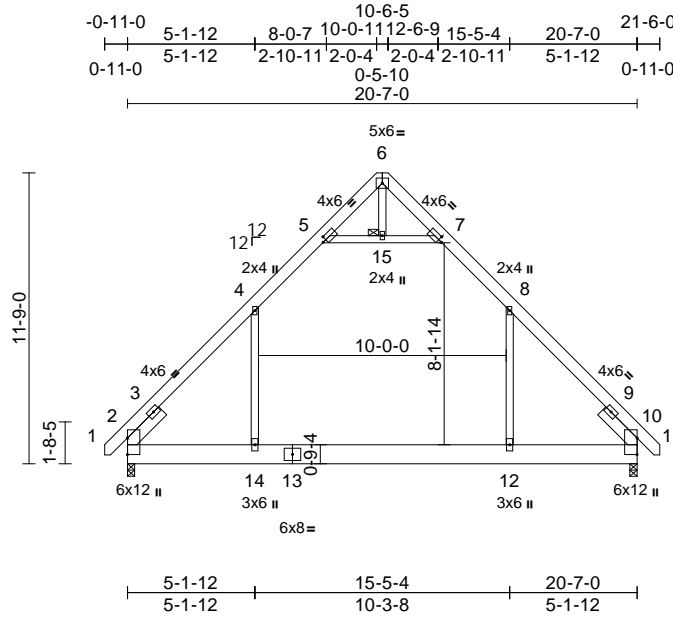


Job	Truss	Truss Type	Qty	Ply	JSJ, Smith Prime Plan (8-20-25)	
4939005	B02	Attic	1	1	Job Reference (optional)	I77536773

Builders FirstSource (Sumter, SC), Sumter, SC - 29153,

Run: 8.83 S Sep 3 2025 Print: 8.830 S Sep 3 2025 MiTek Industries, Inc. Tue Nov 04 11:28:37
ID:sOr8ll3xMMnJ9nagn2?ExmylvHX-RfC?PsB70Hq3NSgPqnL8w3uITXbGKWrCDoi7J4zJC?f

Page: 1



Scale = 1:93.1

Plate Offsets (X, Y): [5:0-1-13,0-2-0], [7:0-1-13,0-2-0]

Loading	(psf)	Spacing	2-0-0	CSI		DEFL	in	(loc)	l/defl	L/d	PLATES	GRIP
TCLL (roof)	20.0	Plate Grip DOL	1.15	TC	0.85	Vert(LL)	-0.18	12-14	>999	360	MT20	244/190
TCDL	10.0	Lumber DOL	1.15	BC	0.34	Vert(CT)	-0.30	12-14	>829	240		
BCLL	0.0 *	Rep Stress Incr	YES	WB	0.20	Horz(CT)	0.03	10	n/a	n/a		
BCDL	10.0	Code	IRC2015/TPI2014	Matrix-MS		Wind(LL)	0.11	12-14	>999	240	Weight: 192 lb	FT = 20%

LUMBER

TOP CHORD	2x6 SP No.2
BOT CHORD	2x10 SP 2400F 2.0E or 2x10 SP DSS
WEBS	2x4 SP No.2 *Except* 6-15:2x4 SP No.3
SLIDER	Left 2x6 SP No.2 -- 1-11-12, Right 2x6 SP No.2 -- 1-11-12

BRACING

TOP CHORD	Structural wood sheathing directly applied or 4-9-13 oc purlins.
BOT CHORD	Rigid ceiling directly applied or 10-0-0 oc bracing.

JOINTS 1 Brace at Jt(s): 15

REACTIONS	(size) 2=0-3-8, 10=0-3-8
	Max Horiz 2=-366 (LC 10)
	Max Uplift 2=-69 (LC 13), 10=-69 (LC 12)
	Max Grav 2=1247 (LC 21), 10=1247 (LC 20)

FORCES (lb) - Maximum Compression/Maximum Tension

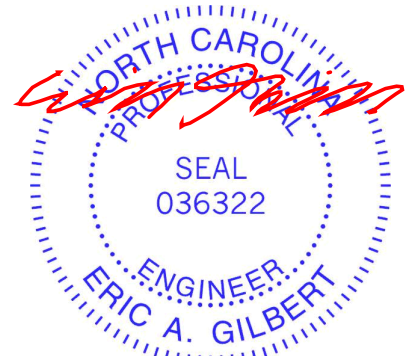
TOP CHORD	1-2=0/34, 2-4=-1321/371, 4-5=-807/265, 5-6=-49/203, 6-7=-50/203, 7-8=-806/265, 8-10=-1320/371, 10-11=0/34
BOT CHORD	2-14=-151/897, 12-14=0/898, 10-12=-25/897
WEBS	8-12=-69/699, 4-14=-70/699, 5-15=-1038/412, 7-15=-1038/412, 6-15=0/69

NOTES

- Unbalanced roof live loads have been considered for this design.
- Wind: ASCE 7-10; Vult=130mph (3-second gust) Vasd=103mph; TCDL=6.0psf; BCDL=6.0psf; h=25ft; Cat. II; Exp C; Enclosed; MWFRS (envelope) exterior zone and C-C Exterior (2) zone; cantilever left and right exposed; end vertical left and right exposed; C-C for members and forces & MWFRS for reactions shown; Lumber DOL=1.60 plate grip DOL=1.60
- This truss has been designed for a 10.0 psf bottom chord live load nonconcurrent with any other live loads.

- * This truss has been designed for a live load of 20.0psf on the bottom chord in all areas where a rectangle 3-06-00 tall by 2-00-00 wide will fit between the bottom chord and any other members.
- Ceiling dead load (5.0 psf) on member(s). 4-5, 5-15, 7-15, 7-8; Wall dead load (5.0psf) on member(s).8-12, 4-14
- Bottom chord live load (40.0 psf) and additional bottom chord dead load (5.0 psf) applied only to room. 12-14
- Provide mechanical connection (by others) of truss to bearing plate capable of withstanding 69 lb uplift at joint 2 and 69 lb uplift at joint 10.
- Attic room checked for L/360 deflection.

LOAD CASE(S) Standard



November 5, 2025

WARNING - Verify design parameters and READ NOTES ON THIS AND INCLUDED MITEK REFERENCE PAGE MII-7473 rev. 1/2/2023 BEFORE USE.

Design valid for use only with MiTek® connectors. This design is based only upon parameters shown, and is for an individual building component, not a truss system. Before use, the building designer must verify the applicability of design parameters and properly incorporate this design into the overall building design. Bracing indicated is to prevent buckling of individual truss web and/or chord members only. Additional temporary and permanent bracing is always required for stability and to prevent collapse with possible personal injury and property damage. For general guidance regarding the fabrication, storage, delivery, erection and bracing of trusses and truss systems, see **ANSI/TPI1 Quality Criteria and DSB-22** available from Truss Plate Institute (www.tpinst.org) and **BCSI Building Component Safety Information** available from the Structural Building Component Association (www.sbcacomponents.com)

ENGINEERING BY
TRENCO
A MiTek Affiliate

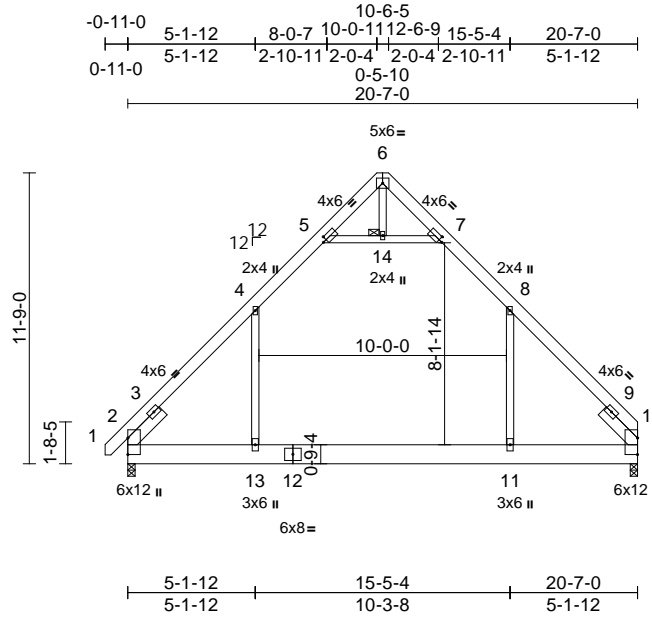
818 Soundside Road
Edenton, NC 27932

Job	Truss	Truss Type	Qty	Ply	JSJ, Smith Prime Plan (8-20-25)	
4939005	B03	Attic	4	1	Job Reference (optional)	I77536774

Builders FirstSource (Sumter, SC), Sumter, SC - 29153,

Run: 8.83 S Sep 3 2025 Print: 8.830 S Sep 3 2025 MiTek Industries, Inc. Tue Nov 04 11:28:37
ID:L6F3ufilB4ZlpouYLog_ixaylvE3-RfC?PsB70Hq3NSgPqnL8w3uITXbGKWrCDoi7J4zJC?f

Page: 1



Scale = 1:93.1

Plate Offsets (X, Y): [5:0-1-13,0-2-0], [7:0-1-13,0-2-0]

Loading	(psf)	Spacing	2-0-0	CSI		DEFL	in	(loc)	l/defl	L/d	PLATES	GRIP
TCLL (roof)	20.0	Plate Grip DOL	1.15	TC	0.85	Vert(LL)	-0.18	11-13	>999	360	MT20	244/190
TCDL	10.0	Lumber DOL	1.15	BC	0.34	Vert(CT)	-0.30	11-13	>828	240		
BCLL	0.0 *	Rep Stress Incr	YES	WB	0.20	Horz(CT)	-0.03	2	n/a	n/a		
BCDL	10.0	Code	IRC2015/TPI2014	Matrix-MS		Wind(LL)	0.11	11-13	>999	240	Weight: 189 lb	FT = 20%

LUMBER

TOP CHORD	2x6 SP No.2
BOT CHORD	2x10 SP 2400F 2.0E or 2x10 SP DSS
WEBS	2x4 SP No.2 *Except* 6-14:2x4 SP No.3
SLIDER	Left 2x6 SP No.2 -- 1-11-12, Right 2x6 SP No.2 -- 1-11-12

BRACING

TOP CHORD	Structural wood sheathing directly applied or 4-9-13 oc purlins.
BOT CHORD	Rigid ceiling directly applied or 10-0-0 oc bracing.

JOINTS 1 Brace at Jt(s): 14

REACTIONS	(size) 2=0-3-8, 10=0-3-8
	Max Horiz 2=357 (LC 9)
	Max Uplift 2=-68 (LC 13), 10=-61 (LC 12)
	Max Grav 2=1248 (LC 21), 10=1219 (LC 20)

FORCES (lb) - Maximum Compression/Maximum Tension

TOP CHORD	1-2=0/34, 2-4=-1322/371, 4-5=-807/264, 5-6=-49/203, 6-7=-49/204, 7-8=-807/265, 8-10=-1322/375
-----------	---

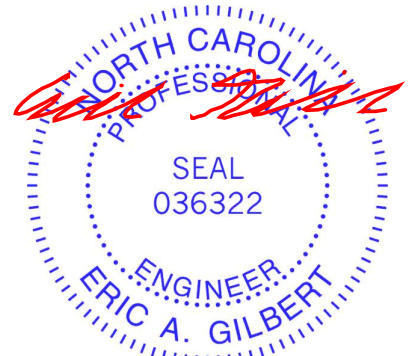
BOT CHORD	2-13=-168/885, 11-13=-5/886, 10-11=-34/885
WEBS	8-11=-69/699, 4-13=-69/700, 5-14=-1039/411, 7-14=-1039/411, 6-14=0/69

NOTES

- Unbalanced roof live loads have been considered for this design.
- Wind: ASCE 7-10; Vult=130mph (3-second gust) Vasd=103mph; TCDL=6.0psf; BCDL=6.0psf; h=25ft; Cat. II; Exp C; Enclosed; MWFRS (envelope) exterior zone and C-C Exterior (2) zone; cantilever left and right exposed; end vertical left and right exposed; C-C for members and forces & MWFRS for reactions shown; Lumber DOL=1.60 plate grip DOL=1.60
- This truss has been designed for a 10.0 psf bottom chord live load nonconcurrent with any other live loads.

- * This truss has been designed for a live load of 20.0psf on the bottom chord in all areas where a rectangle 3-06-00 tall by 2-00-00 wide will fit between the bottom chord and any other members.
- Ceiling dead load (5.0 psf) on member(s). 4-5, 7-8, 5-14, 7-14; Wall dead load (5.0psf) on member(s). 8-11, 4-13
- Bottom chord live load (40.0 psf) and additional bottom chord dead load (5.0 psf) applied only to room. 11-13
- Provide mechanical connection (by others) of truss to bearing plate capable of withstanding 61 lb uplift at joint 10 and 68 lb uplift at joint 2.
- Attic room checked for L/360 deflection.

LOAD CASE(S) Standard



November 5, 2025

WARNING - Verify design parameters and READ NOTES ON THIS AND INCLUDED MITEK REFERENCE PAGE MII-7473 rev. 1/2/2023 BEFORE USE.

Design valid for use only with MiTek® connectors. This design is based only upon parameters shown, and is for an individual building component, not a truss system. Before use, the building designer must verify the applicability of design parameters and properly incorporate this design into the overall building design. Bracing indicated is to prevent buckling of individual truss web and/or chord members only. Additional temporary and permanent bracing is always required for stability and to prevent collapse with possible personal injury and property damage. For general guidance regarding the fabrication, storage, delivery, erection and bracing of trusses and truss systems, see **ANSI/TPI1 Quality Criteria and DSB-22** available from Truss Plate Institute (www.tpinst.org) and **BCSI Building Component Safety Information** available from the Structural Building Component Association (www.sbcacomponents.com)

ENGINEERING BY
TRENCO
A MiTek Affiliate

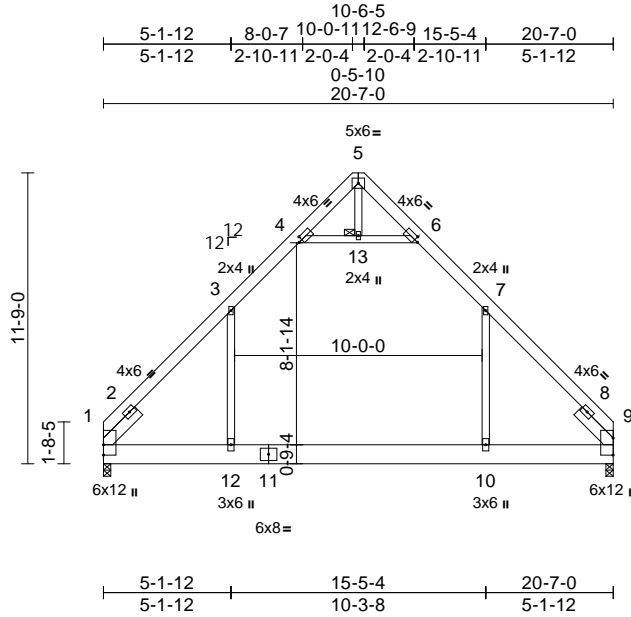
818 Soundside Road
Edenton, NC 27932

Job	Truss	Truss Type	Qty	Ply	JSJ, Smith Prime Plan (8-20-25)	
4939005	B04	Attic	3	1	Job Reference (optional)	177536775

Builders FirstSource (Sumter, SC), Sumter, SC - 29153,

Run: 8.83 S Sep 3 2025 Print: 8.830 S Sep 3 2025 MiTek Industries, Inc. Tue Nov 04 11:28:37
ID:L6F3ufIB4ZlpouYLog_ixaylvE3-RfC?PsB70Hq3NSgPqnL8w3uITXbGKWrCDoi7J4zJC?f

Page: 1



Scale = 1:93.1

Plate Offsets (X, Y): [4:0-1-13,0-2-0], [6:0-1-13,0-2-0]

Loading	(psf)	Spacing	2-0-0	CSI		DEFL	in	(loc)	l/defl	L/d	PLATES	GRIP
TCLL (roof)	20.0	Plate Grip DOL	1.15	TC	0.86	Vert(LL)	-0.18	10-12	>999	360	MT20	244/190
TCDL	10.0	Lumber DOL	1.15	BC	0.34	Vert(CT)	-0.30	10-12	>828	240		
BCLL	0.0 *	Rep Stress Incr	YES	WB	0.20	Horz(CT)	-0.03	1	n/a	n/a		
BCDL	10.0	Code	IRC2015/TPI2014	Matrix-MS		Wind(LL)	0.11	10-12	>999	240	Weight: 186 lb	FT = 20%

LUMBER

TOP CHORD 2x6 SP No.2
BOT CHORD 2x10 SP 2400F 2.0E or 2x10 SP DSS
WEBS 2x4 SP No.2 *Except* 5-13:2x4 SP No.3
SLIDER Left 2x6 SP No.2 -- 1-11-12, Right 2x6 SP No.2 -- 1-11-12

BRACING

TOP CHORD Structural wood sheathing directly applied or 4-9-13 oc purlins.
BOT CHORD Rigid ceiling directly applied or 10-0-0 oc bracing.

JOINTS 1 Brace at Jt(s): 13

REACTIONS (size) 1=0-3-8, 9=0-3-8
Max Horiz 1=340 (LC 9)
Max Uplift 1=60 (LC 13), 9=60 (LC 12)
Max Grav 1=1220 (LC 21), 9=1220 (LC 20)

FORCES

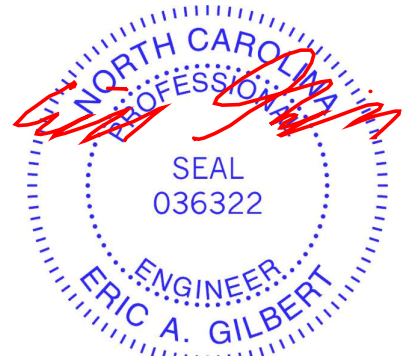
(lb) - Maximum Compression/Maximum Tension
TOP CHORD 1-3=-1324/375, 3-4=-808/264, 4-5=-49/204, 5-6=-49/204, 6-7=-808/264, 7-9=-1323/375
BOT CHORD 1-12=-152/886, 10-12=-4/887, 9-10=-34/886
WEBS 7-10=-68/701, 3-12=-68/701, 4-13=-1040/409, 6-13=-1040/409, 5-13=0/69

NOTES

- Unbalanced roof live loads have been considered for this design.
- Wind: ASCE 7-10; Vult=130mph (3-second gust) Vasd=103mph; TCDL=6.0psf; BCDL=6.0psf; h=25ft; Cat. II; Exp C; Enclosed; MWFRS (envelope) exterior zone and C-C Exterior (2) zone; cantilever left and right exposed; end vertical left and right exposed; C-C for members and forces & MWFRS for reactions shown; Lumber DOL=1.60 plate grip DOL=1.60
- This truss has been designed for a 10.0 psf bottom chord live load nonconcurrent with any other live loads.

- * This truss has been designed for a live load of 20.0psf on the bottom chord in all areas where a rectangle 3-06-00 tall by 2-00-00 wide will fit between the bottom chord and any other members.
- Ceiling dead load (5.0 psf) on member(s). 3-4, 6-7, 4-13, 6-13; Wall dead load (5.0psf) on member(s). 7-10, 3-12
- Bottom chord live load (40.0 psf) and additional bottom chord dead load (5.0 psf) applied only to room. 10-12
- Provide mechanical connection (by others) of truss to bearing plate capable of withstanding 60 lb uplift at joint 1 and 60 lb uplift at joint 9.
- Attic room checked for L/360 deflection.

LOAD CASE(S) Standard



November 5, 2025

WARNING - Verify design parameters and READ NOTES ON THIS AND INCLUDED MITEK REFERENCE PAGE MII-7473 rev. 1/2/2023 BEFORE USE.

Design valid for use only with MiTek® connectors. This design is based only upon parameters shown, and is for an individual building component, not a truss system. Before use, the building designer must verify the applicability of design parameters and properly incorporate this design into the overall building design. Bracing indicated is to prevent buckling of individual truss web and/or chord members only. Additional temporary and permanent bracing is always required for stability and to prevent collapse with possible personal injury and property damage. For general guidance regarding the fabrication, storage, delivery, erection and bracing of trusses and truss systems, see **ANSI/TPI1 Quality Criteria and DSB-22** available from Truss Plate Institute (www.tpinst.org) and **BCSI Building Component Safety Information** available from the Structural Building Component Association (www.sbcacompoments.com)

ENGINEERING BY
TRENCO
A MiTek Affiliate

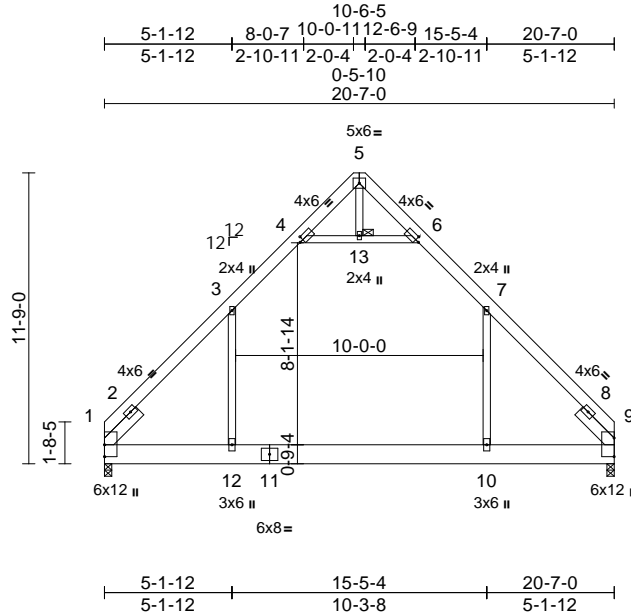
818 Soundside Road
Edenton, NC 27932

Job	Truss	Truss Type	Qty	Ply	JSJ, Smith Prime Plan (8-20-25)	
4939005	B05	Attic	1	2	Job Reference (optional)	177536776

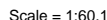
Builders FirstSource (Sumter, SC), Sumter, SC - 29153,

Run: 8.83 S Sep 3 2025 Print: 8.830 S Sep 3 2025 MiTek Industries, Inc. Tue Nov 04 11:28:38
ID:yL9Dy3KImJoYGDZcmrZiylvDJ-RfC?PsB70Hq3NSgPqnL8w3uITXbGKWrCDoi7J4zJC?f

Page: 1



Builders FirstSource (Sumter, SC), Sumter, SC - 29153, Run: 8.83 S Sep 3 2025 Print: 8.830 S Sep 3 2025 MiTek Industries, Inc. Tue Nov 04 11:28:38 Page: 1
ID:oluU2EvA?oaoUSFCNBWQbhyIvUa-RfC?PsB70Hg3NSaPanL8w3uITXbGKWKRCDoi7J4zJC?f

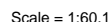


NOTES

- 1) Unbalanced roof live loads have been considered for this design.
- 2) Wind: ASCE 7-10; Vult=130mph (3-second gust)
Vasd=103mph; TCDL=6.0psf; BCDL=6.0psf; h=25ft; Cat. II; Exp C; Enclosed; MWFRS (envelope) exterior zone and C-C Exterior (2) zone; cantilever left and right exposed ; end vertical left and right exposed; C-C for members and forces & MWFRS for reactions shown; Lumber DOL=1.60 plate grip DOL=1.60
- 3) Truss designed for wind loads in the plane of the truss only. For studs exposed to wind (normal to the face), see Standard Industry Gable End Details as applicable, or consult qualified building designer as per ANSI/TPI 1.
- 4) Gable requires continuous bottom chord bearing.



Builders FirstSource (Sumter, SC), Sumter, SC - 29153, Run: 8.83 S Sep 3 2025 Print: 8.830 S Sep 3 2025 MiTek Industries, Inc. Tue Nov 04 11:28:38 Page: 1
ID:hFcZJno03pyeQSl6vnNZxylvUn-RfC?PsB70Ha3NSaPanL8w3ulTXbGKWkRCD0J74zJC?f



LUMBER
TOP CHORD 2x4 SP No.2
BOT CHORD 2x4 SP No.2
OTHERS 2x4 SP No.3

BRACING
TOP CHORD Structural wood sheathing directly applied or 6-0-0 oc purlins.
BOT CHORD Rigid ceiling directly applied or 10-0-0 oc bracing.

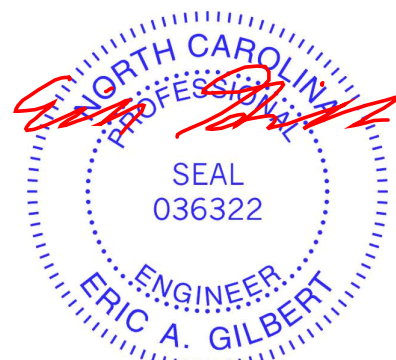
REACTIONS (size) 2=8-1-6, 4=8-1-6, 6=8-1-6
Max Horiz 2=-53 (LC 13)
Max Uplift 2=-81 (LC 12), 4=-91 (LC 13),
6=-52 (LC 12)
Max Grav 2=202 (LC 1), 4=202 (LC 1), 6=317 (LC 1)

FORCES (lb) - Maximum Compression/Maximum Tension
TOP CHORD 1-2=0/18, 2-3=-95/104, 3-4=-95/105,
4-5=0/18
BOT CHORD 2-6=-25/62, 4-6=-17/62
WEBS 3-6=-175/118

- ## NOTES
- 1) Unbalanced roof live loads have been considered for this design.
 - 2) Wind: ASCE 7-10; Vult=130mph (3-second gust)
Vasd=103mph; TC DL=6.0psf; BC DL=6.0psf; h=25ft; Cat. II; Exp C; Enclosed; MWFRS (envelope) exterior zone and C-C Exterior (2) zone; cantilever left and right exposed ; end vertical left and right exposed; C-C for members and forces & MWFRS for reactions shown; Lumber DOL=1.60 plate grip DOL=1.60
 - 3) Truss designed for wind loads in the plane of the truss only. For studs exposed to wind (normal to the face), see Standard Industry Gable End Details as applicable, or consult qualified building designer as per ANSI/TPI 1.
 - 4) Gable requires continuous bottom chord bearing.
 - 5) Gable studs spaced at 4'-0" oc.
 - 6) This truss has been designed for a 10.0 psf bottom chord live load nonconcurrent with any other live loads.

- 7) * This truss has been designed for a live load of 20.0psf on the bottom chord in all areas where a rectangle 3-06-00 tall by 2-00-00 wide will fit between the bottom chord and any other members.
- 8) Provide mechanical connection (by others) of truss to bearing plate capable of withstanding 81 lb uplift at joint 2, 91 lb uplift at joint 4, 52 lb uplift at joint 6, 81 lb uplift at joint 2 and 91 lb uplift at joint 4.
- 9) See Standard Industry Piggyback Truss Connection Detail for Connection to base truss as applicable, or consult qualified building designer.

LOAD CASE(S) Standard



November 5.2025



Design valid for use only with MiTeK® connectors. This design is based only upon parameters shown, and is for an individual building component, not a truss system. Before use, the building designer must verify the applicability of design parameters and properly incorporate this design into the overall building design. Bracing indicated is to prevent buckling of individual truss web and/or chord members only. Additional temporary and permanent bracing is always required for stability and to prevent collapse with possible personal injury and property damage. For general guidance regarding the fabrication, storage, delivery, erection and bracing of trusses and truss systems, see **ANSI/TP1 Quality Criteria and DSB-22** available from Truss Plate Institute (www.tpinst.org) and **BCSI Building Component Safety Information** available from the Structural Building Components Association (www.sbcacomponents.com)



818 Soundside Road
Edenton, NC 27932

Symbols

PLATE LOCATION AND ORIENTATION



* Plate location details available in MITek software or upon request.

PLATE SIZE

4 X 4

The first dimension is the plate width measured perpendicular to slots. Second dimension is the length parallel to slots.

LATERAL BRACING LOCATION



Indicated by symbol shown and/or by text in the bracing section of the output. Use T or I bracing if indicated.

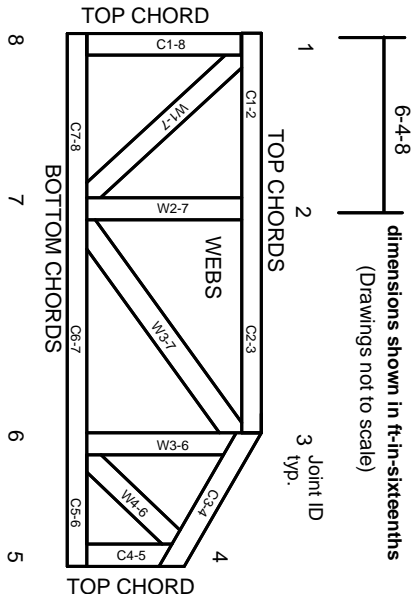
BEARING



Indicates location where bearings (supports) occur. Icons vary but reaction section indicates joint number/letter where bearings occur. Min size shown is for crushing only.

Industry Standards:
ANSI/TP1: National Design Specification for Metal Plate Connected Wood Truss Construction.
DSB-22: Building Component Safety Information, Guide to Good Practice for Handling, Installing, Restraining & Bracing of Metal Plate Connected Wood Trusses.

Numbering System



JOINTS ARE GENERALLY NUMBERED/LETTERED CLOCKWISE AROUND THE TRUSS STARTING AT THE JOINT FARTHEST TO THE LEFT.

CHORDS AND WEBS ARE IDENTIFIED BY END JOINT NUMBERS/LETTERS.

Product Code Approvals

ICC-ES Reports:
ESR-1988, ESR-2362, ESR-2685, ESR-3282
ESR-4722, ESL-1388

Design General Notes

Trusses are designed for wind loads in the plane of the truss unless otherwise shown.

Lumber design values are in accordance with ANSI/TP1 section 6.3. These truss designs rely on lumber values established by others.

© 2023 MITek® All Rights Reserved

General Safety Notes

Failure to Follow Could Cause Property Damage or Personal Injury

1. Additional stability bracing for truss system, e.g. diagonal or X-bracing, is always required. See BCSI.
2. Truss bracing must be designed by an engineer. For wide truss spacing, individual lateral braces themselves may require bracing, or alternative Tor I bracing should be considered.
3. Never exceed the design loading shown and never stack materials on inadequately braced trusses.
4. Provide copies of this truss design to the building designer, erection supervisor, property owner and all other interested parties.
5. Cut members to bear tightly against each other.
6. Place plates on each face of truss at each joint and embed fully. Knots and wane at joint locations are regulated by ANSI/TP1 1.
7. Design assumes trusses will be suitably protected from the environment in accord with ANSI/TP1 1.
8. Unless otherwise noted, moisture content of lumber shall not exceed 19% at time of fabrication.
9. Unless expressly noted, this design is not applicable for use with fire retardant, preservative treated, or green lumber.
10. Camber is a non-structural consideration and is the responsibility of truss fabricator. General practice is to camber for dead load deflection.
11. Plate type, size, orientation and location dimensions indicated are minimum plating requirements.
12. Lumber used shall be of the species and size, and in all respects, equal to or better than that specified.
13. Top chords must be sheathed or purlins provided at spacing indicated on design.
14. Bottom chords require lateral bracing at 10 ft. spacing, or less, if no ceiling is installed, unless otherwise noted.
15. Connections not shown are the responsibility of others.
16. Do not cut or alter truss member or plate without prior approval of an engineer.
17. Install and load vertically unless indicated otherwise.
18. Use of green or treated lumber may pose unacceptable environmental, health or performance risks. Consult with project engineer before use.
19. Review all portions of this design (front, back, words and pictures) before use. Reviewing pictures alone is not sufficient.
20. Design assumes manufacture in accordance with ANSI/TP1 1 Quality Criteria.
21. The design does not take into account any dynamic or other loads other than those expressly stated.

MITek®

ENGINEERING BY
TRENCO
A MITek Affiliate

MITek Engineering Reference Sheet: MII-7473 rev. 1/2/2023