

DN01

DO NOT

cut, notch or drill flanges

DN04

DO NOT

cut holes near bearing support

F15-A

BCI joists are intended only for applications that provide permanent protection from the weather.

F06

Load bearing wall above (stacked over wall below)

F15-E

Sill plate to be properly anchored to steel beam

F07

See Boise literature for vertical load capacity.

F16-D

Backer Block

F08

Solid block all posts from above to bearing below.

F18

See Boise literature for vertical load capacity.

F09

Load bearing wall above (stacked over wall below)

F52

8d each side of web through flange at bearing

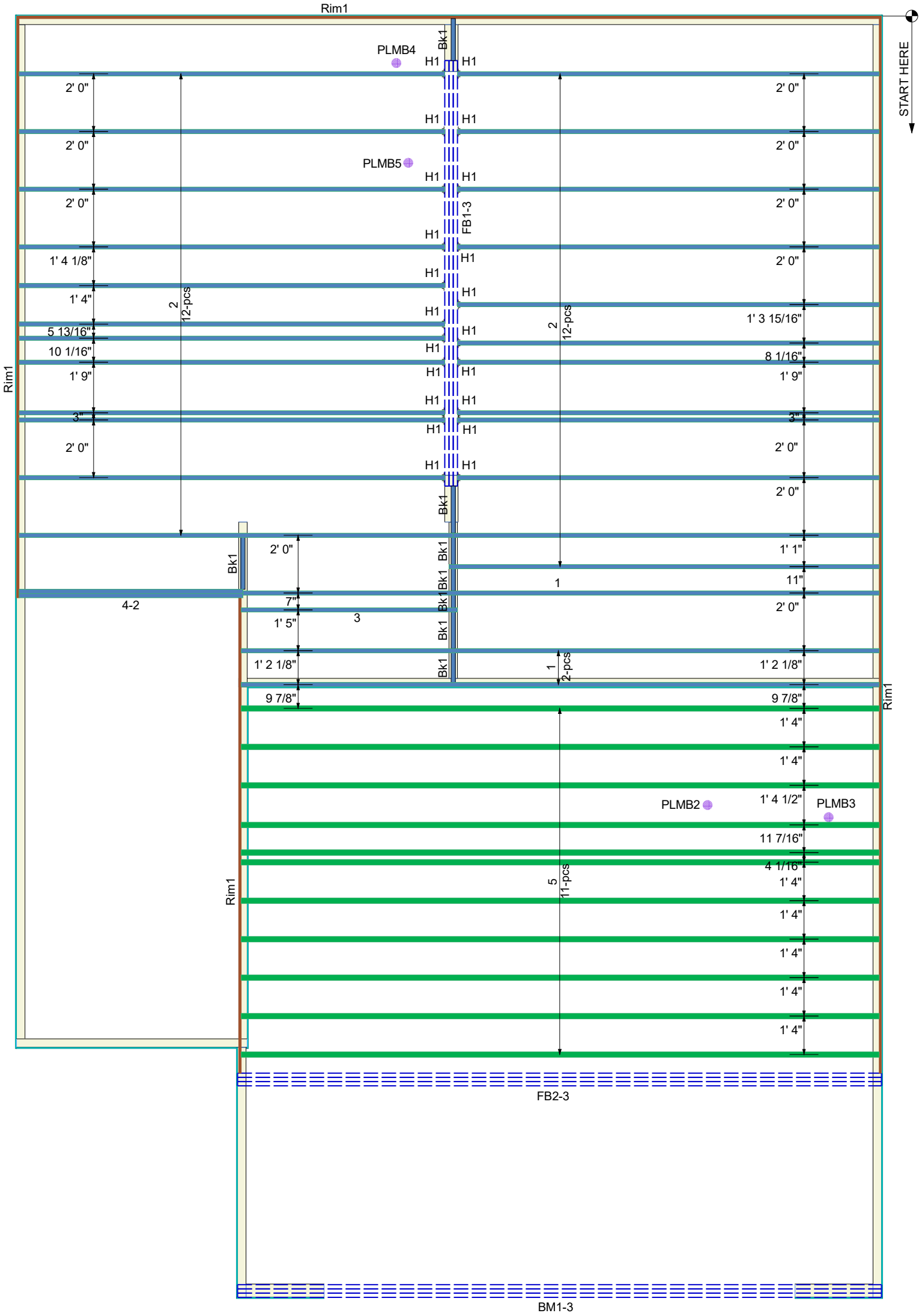
F19

Joist hanger

F58

Double BCI Joist Connection

SEE SEALED STRUCTURAL PLAN FOR ALL DETAILS AND CONNECTIONS. THIS IS A PLACEMENT PLAN ONLY.



Joist & Rafter Area Loads	Live Load psf	Dead Load psf
Primary Living	40	10
Secondary & Attic Permanent Stairs	30	10
Ceiling - Limited Storage	20	10
Ceiling - No Storage	10	5
Roof - No Ceiling Load	20	10
Flat Roof or Cathedral w/Drywall Ceiling	20	15

Builders

FirstSource

www.bldr.com

Boise Cascade

7601 BOEING DRIVE  
GREENSBORO, NC 27409  
V (336) 884-5454

4575 HAMPTON ROAD  
CLEMMONS, NC 27409  
V (336) 712-9910

1135 ROBESON STREET  
FAYETTEVILLE, NC 28305  
V (910) 485-1111

3189 NC HIGHWAY 5  
ABERDEEN NC 28315  
V (910) 944-2516

This layout and associated materials list has been prepared based on project plans and/or information provided to Builders FirstSource (BFS). It remains the responsibility of the builder, architect, designer, or other responsible persons to review this information to assure that it is appropriate, accurate, complete and complies with applicable building codes.

Products				
PlotID	Length	Product	Plies	Net Qty
1	24' 0"	14" BCI@ 4500s-1.8	1	3
2	16' 0"	14" BCI@ 4500s-1.8	1	24
3	8' 0"	14" BCI@ 4500s-1.8	1	1
4-2	8' 0"	14" BCI@ 4500s-1.8	2	2
5	24' 0"	14" BCI@ 60s-2.0	1	11
BM1-3	24' 0"	1-3/4" x 14" VERSA-LAM@ LVL 2.1E 3100 SP	3	3
FB1-3	16' 0"	1-3/4" x 14" VERSA-LAM@ LVL 2.1E 3100 SP	3	3
FB2-3	24' 0"	1-3/4" x 16" VERSA-LAM@ LVL 2.1E 3100 SP	3	3
Rim1	12' 0"	1" x 14" BC RIM BOARD OSB	1	9
Bk1	10' 0"	14" BCI@ 4500s-1.8	1	1

Hangers			
PlotID	Qty	Manuf	Product
H1	21	Simpson	IUS1.81/14

**GENERAL NOTES:**

- 1.) READ THE INSTALLATION GUIDE BEFORE FRAMING.
- 2.) ALL WALLS SHOWN ARE LOAD BEARING UNLESS NOTED OTHERWISE. WALLS NOT SHOWN ARE CONSIDERED NON-LOAD BEARING.
- 3.) UNLESS STATED OTHERWISE ALL CEILING & ROOF LOADS BRACE DIRECTLY TO LOAD BEARING WALLS SUPPORTED BY FOUNDATION.
- 4.) CONTACT BUILDERS FIRSTSOURCE BEFORE MAKING ANY ALTERATIONS OR ADJUSTMENTS...FAILURE TO DO SO MAY RESULT IN COSTLY REPAIRS.

JSJ

PRESTWICK

SECOND FLOOR EWP PLACEMENT PLAN

Builders FirstSource, Central Carolina Markets

DRAWN BY: Vernon Schmidt

DATE: 11/6/2025

SCALE: NTS

MINIMUM DESIGN DATA

LIVE LOAD 40 PSF

DEAD LOAD 10 PSF

TOTAL LOAD 50 PSF

DOL = 100%

DEFLECTION CRITERIA L/480 (MINIMUM)

ARCHITECTUAL PLAN DATE 5-20-2024

REVISED ARCH. PLAN DATE **XX-XX-XX**

**SD05152025**

Sheet 1 of 1

LOT 20 ILA'S WAY

Wall Legend	
	Bearing Wall
	Non-Load Bearing Wall