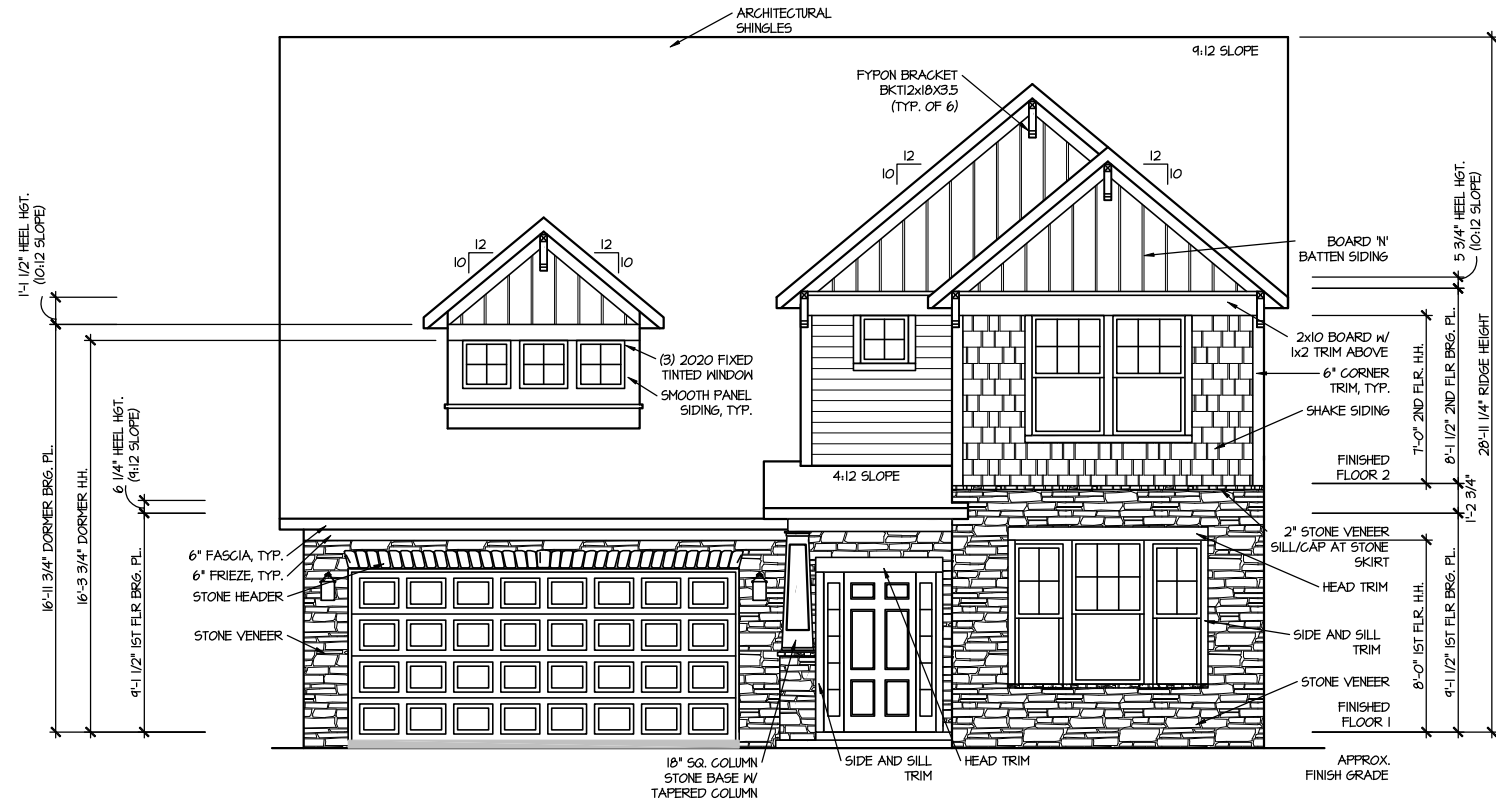


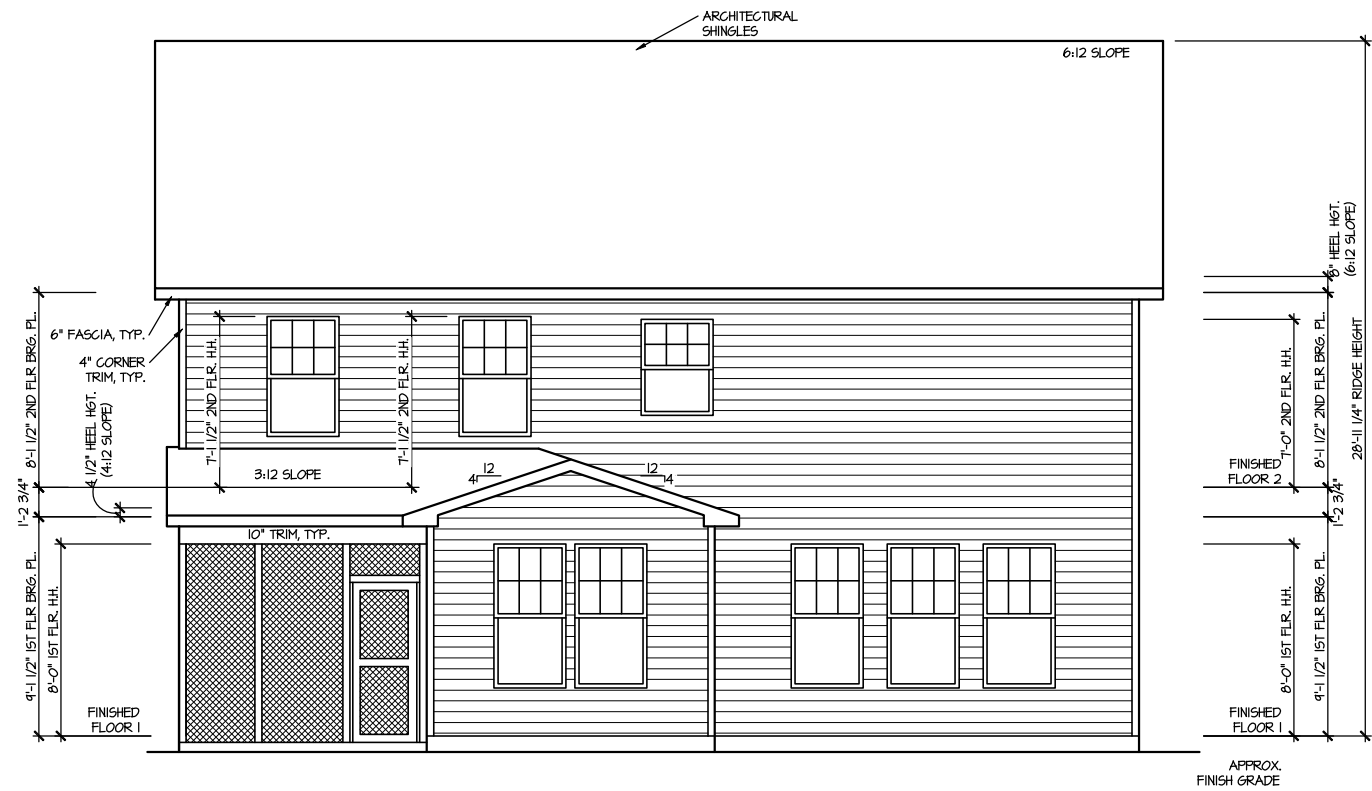
[illegible]

FILE: Lot_00.0052.dwg DATE: 10/17/2025 11:23 AM



FRONT ELEVATION 4.1

SCALE: 1/8" = 1'-0"



REAR ELEVATION 4.1

SCALE: 1/8" = 1'-0"

DRAWN BY:		ITS
DATE:		10/17/2025
PLAN NO.		2695

MASTER PLAN INFORMATION	
REVISION	DATE
2-RALE	03-06-2019

UPDATED DATE	04-26-2024
--------------	------------

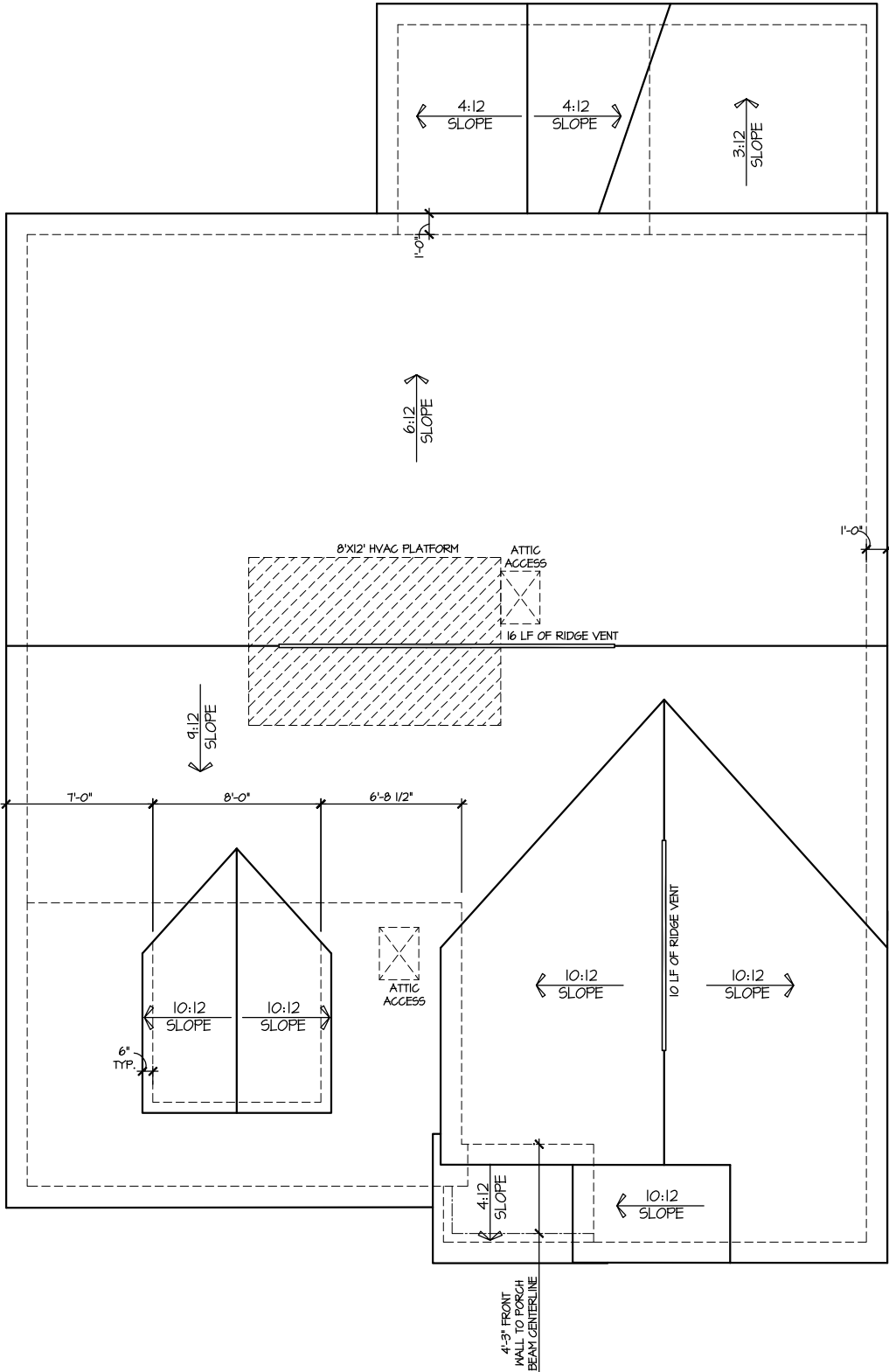
DRB
HOMES

HOUSE NAME:
DRAYTON
DRAWING TITLE
FRONT & REAR ELEVATIONS

SHEET No.
A.1

ROOF VENTILATION CALCULATIONS:
ROOF AREA = 1836 SQ. FT.
OVERALL REQUIRED VENTILATION:
1 TO 150 = 12.24 SQ. FT.
1 TO 300 = 6.12 SQ. FT.
50-80% IN TOP THIRD = 3.06- 4.90 FT. (1 TO 300)
NET FREE AREA OF VENTED SOFFIT = 5.7 SQ. IN / LINEAR FT.
NET FREE AREA OF RIDGE VENT = 18 SQ. IN/ LINEAR FT.

LOWER VENTING: (BOTTOM 2/3 RDS)
77 LINEAR FEET OF SOFFIT X 5.7 SQ. IN. = 3.05 SQ. FT.
UPPER VENTING: (TOP 1/3 RD)
26 LINEAR FEET OF RIDGE X 18 SQ. IN = 3.25 SQ. FT.
3.25 SQ. FT. BETWEEN 50% - 80%
(1 TO 300 ALLOWED)
TOTAL ROOF VENTILATION: 6.30 SQ. FT. > 6.12 SQ. FT. (RQ'D)



ROOF PLAN ELEV. 4.1
SCALE: 1/8" = 1'-0"

DRAWN BY:	
ITS	
DATE:	
10/17/2025	
PLAN NO.	
2695	



HOUSE NAME:
DRAYTON
DRAWING TITLE
ROOF PLAN

SHEET No.
A.3

MASTER PLAN INFORMATION	
REVISION	DATE
2-RALE	03-06-2019

UPDATED DATE
04-26-2024

MASTER PLAN INFORMATION		
REVISION	DATE	UPDATED DATE
2 - RALE	03-06-2019	04-26-2024

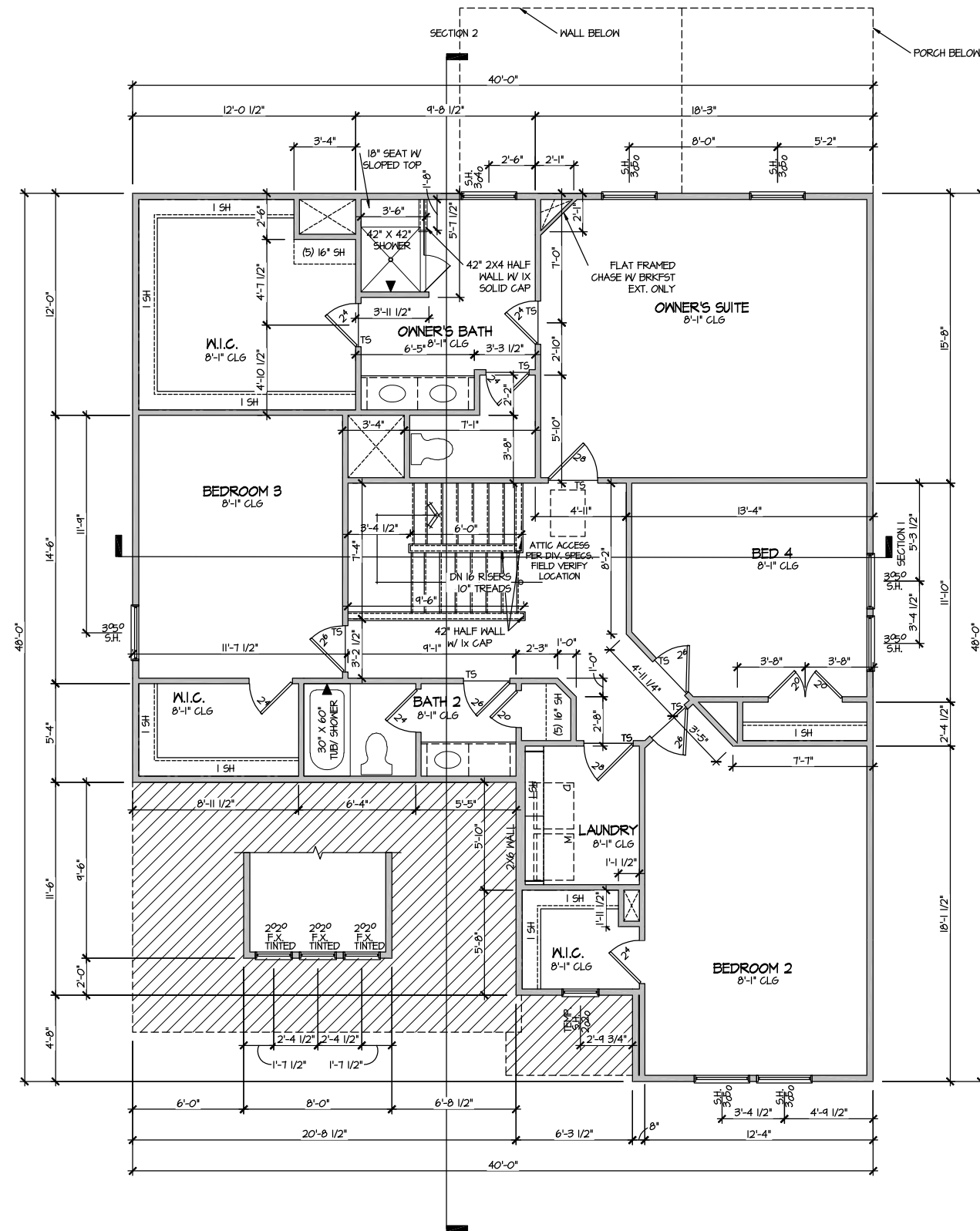
DRAWN BY:	ITS
DATE:	10/17/2025
PLAN NO.	2695



HOUSE NAME:
DRAYTON

DRAWING TITLE
SLAB PLAN

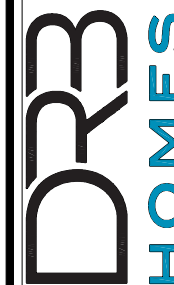
SHEET No.
A2.1



FILE: Lot 00.0052.dwg DATE: 10/17/2025 11:23 AM

MASTER PLAN INFORMATION		
REVISION	DATE	UPDATED DATE
2-RALE	03-06-2019	04-26-2024

DRAWN BY:	ITS
DATE:	10/17/2025
PLAN NO.	2695

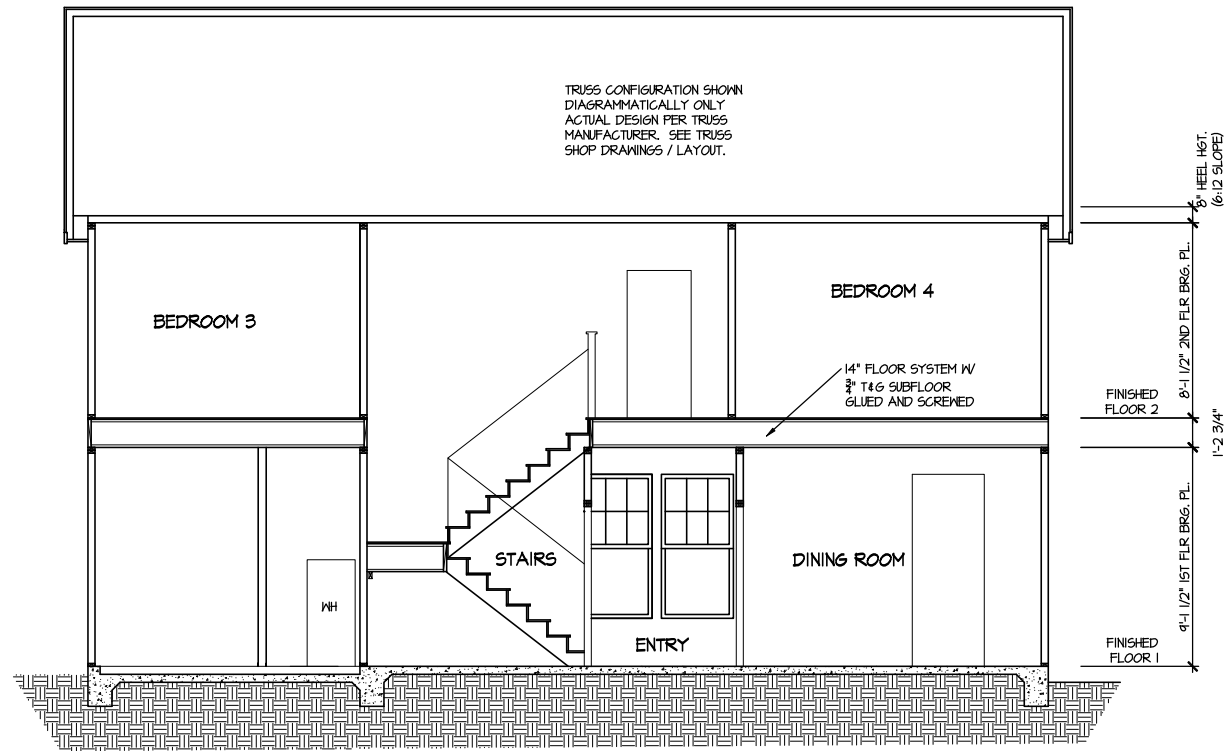


HOUSE NAME:
DRAYTON

DRAWING TITLE
SECOND FLOOR PLAN

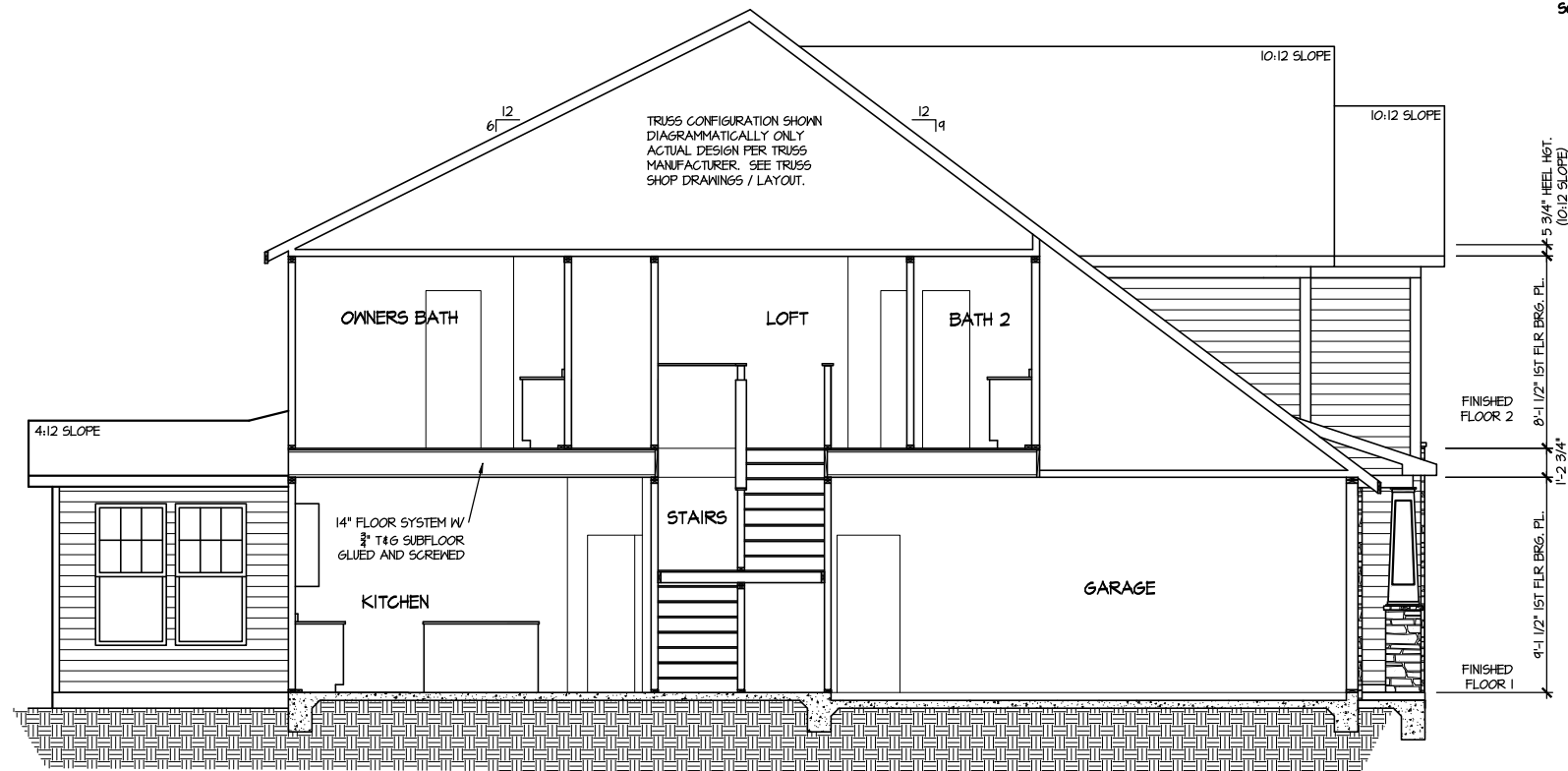
SHEET No.

A3.2



SECTION I

SCALE: 1/8" = 1'-0"



SECTION 2

SCALE: 1/8" = 1'-0"

MASTER PLAN INFORMATION

REVISION	DATE	UPDATED DATE
2-RAL	03-06-2019	04-26-2024

DRAWN BY:
ITS

DATE:
10/17/2025

PLAN NO.
2695

DRB
HOMES

HOUSE NAME:
DRAYTON

DRAWING TITLE

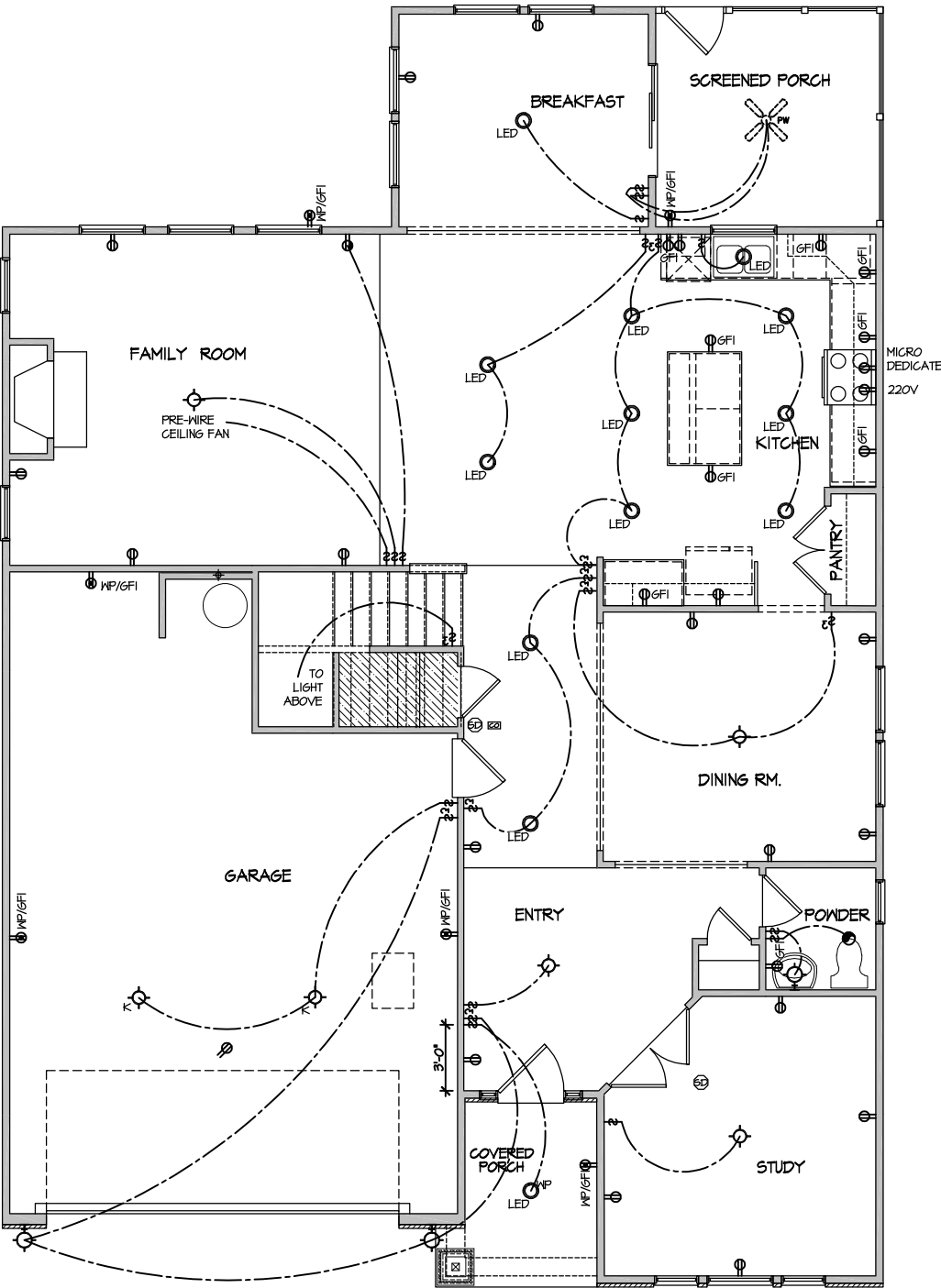
BUILDING SECTION

SHEET No.

A4.1

ELECTRICAL LEGEND	
	SINGLE POLE SWITCH
	THREE WAY SWITCH
	FOUR WAY SWITCH
	DUPLEX AFCI RECEPTACLE
	DUPLEX AFCI RECEPTACLE - BOTTOM HALF SWITCHED
	DUPLEX AFCI RECEPTACLE - FLOOR MOUNTED
	RECEPTACLE - 220V
	DUPLEX AFCI RECEPTACLE - GFI
	DUPLEX AFCI RECEPTACLE - WATERPROOF GFI
	SMOKE DETECTOR - WIRED IN SERIES
	EXHAUST FAN MOTOR
	CO DETECTOR
	DOOR CHIME
	LIGHT FIXTURE - WALL MOUNTED
	LIGHT FIXTURE - CEILING MOUNTED
	LIGHT FIXTURE - LED SURFACE MOUNTED
	PULLCHAIN LAMPHOLDER
	KEYLESS LAMPHOLDER

NOTE: ALL ELECTRICAL WORK SHALL CONFORM TO THE REQUIREMENTS OF THE ADOPTED VERSION OF THE NATIONAL ELECTRICAL CODE, THE LOCAL POWER COMPANY AND TO ALL APPLICABLE LOCAL REGULATIONS.



ELECTRICAL PLAN
FIRST FLOOR - ELEV. 4.1

SCALE: 1/8" = 1'-0"

FILE: Lot 00.0052.dwg DATE: 10/17/2025 11:23 AM

MASTER PLAN INFORMATION	
REVISION	DATE
2-RALE	03-06-2019
UPDATED DATE	04-26-2024

DRAWN BY:	ITS
DATE:	10/17/2025
PLAN NO.	2695



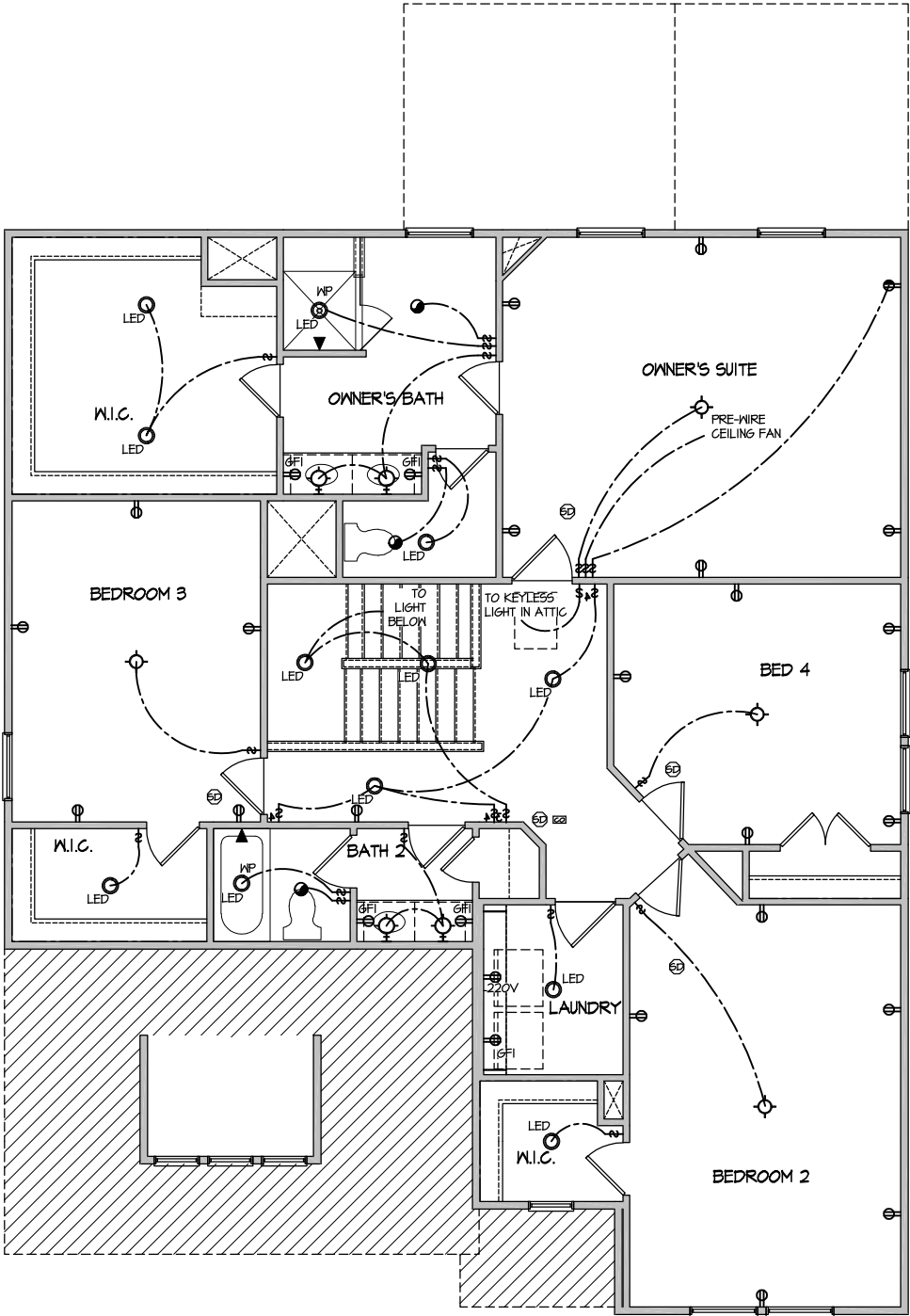
HOUSE NAME:	DRAYTON
DRAWING TITLE	FIRST FLOOR ELECTRICAL

SHEET No.	1.1
-----------	-----

FILE: Lot_00.0052.dwg DATE: 10/17/2025 11:23 AM

ELECTRICAL LEGEND	
	SINGLE POLE SWITCH
	THREE WAY SWITCH
	FOUR WAY SWITCH
	DUPLEX AFCI RECEPTACLE
	DUPLEX AFCI RECEPTACLE - BOTTOM HALF SWITCHED
	DUPLEX AFCI RECEPTACLE - FLOOR MOUNTED
	RECEPTACLE - 220V
	DUPLEX AFCI RECEPTACLE - GFI
	DUPLEX AFCI RECEPTACLE - WATERPROOF GFI
	SMOKE DETECTOR - WIRED IN SERIES
	EXHAUST FAN MOTOR
	CO DETECTOR
	DOOR CHIME
	LIGHT FIXTURE - WALL MOUNTED
	LIGHT FIXTURE - CEILING MOUNTED
	LIGHT FIXTURE - LED SURFACE MOUNTED
	PULLCHAIN LAMPHOLDER
	KEYLESS LAMPHOLDER

NOTE: ALL ELECTRICAL WORK SHALL CONFORM TO THE REQUIREMENTS OF THE ADOPTED VERSION OF THE NATIONAL ELECTRICAL CODE, THE LOCAL POWER COMPANY AND TO ALL APPLICABLE LOCAL REGULATIONS.



ELECTRICAL PLAN
SECOND FLOOR - ELEV. 4.1
SCALE: 1/8" = 1'-0"

MASTER PLAN INFORMATION	
REVISION	DATE
2-RALE	03-06-2019
	UPDATED DATE
	04-26-2024

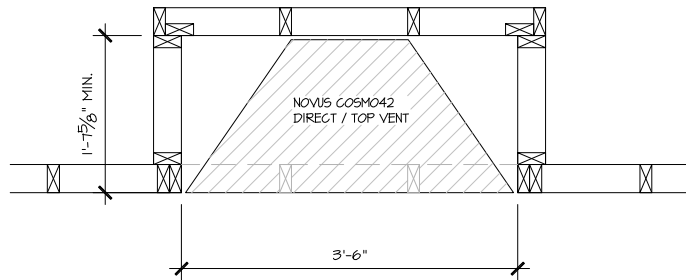
DRAWN BY:	ITS
DATE:	10/17/2025
PLAN NO.	2695



HOUSE NAME:	DRAYTON
DRAWING TITLE	SECOND FLOOR ELECTRICAL

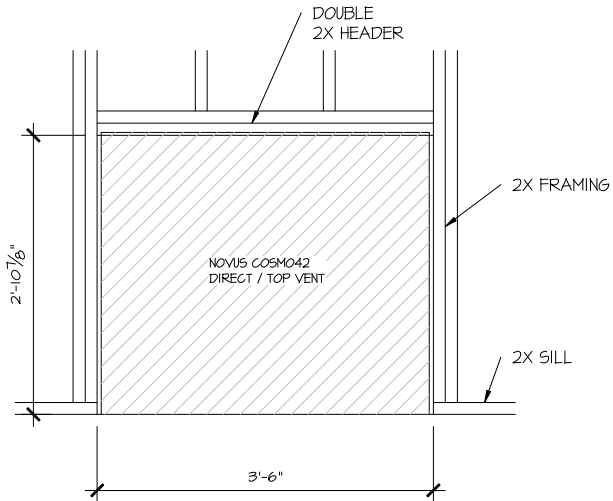
SHEET No.	1.2
-----------	-----

ALL DIMENSIONS
ARE TO FRAMING



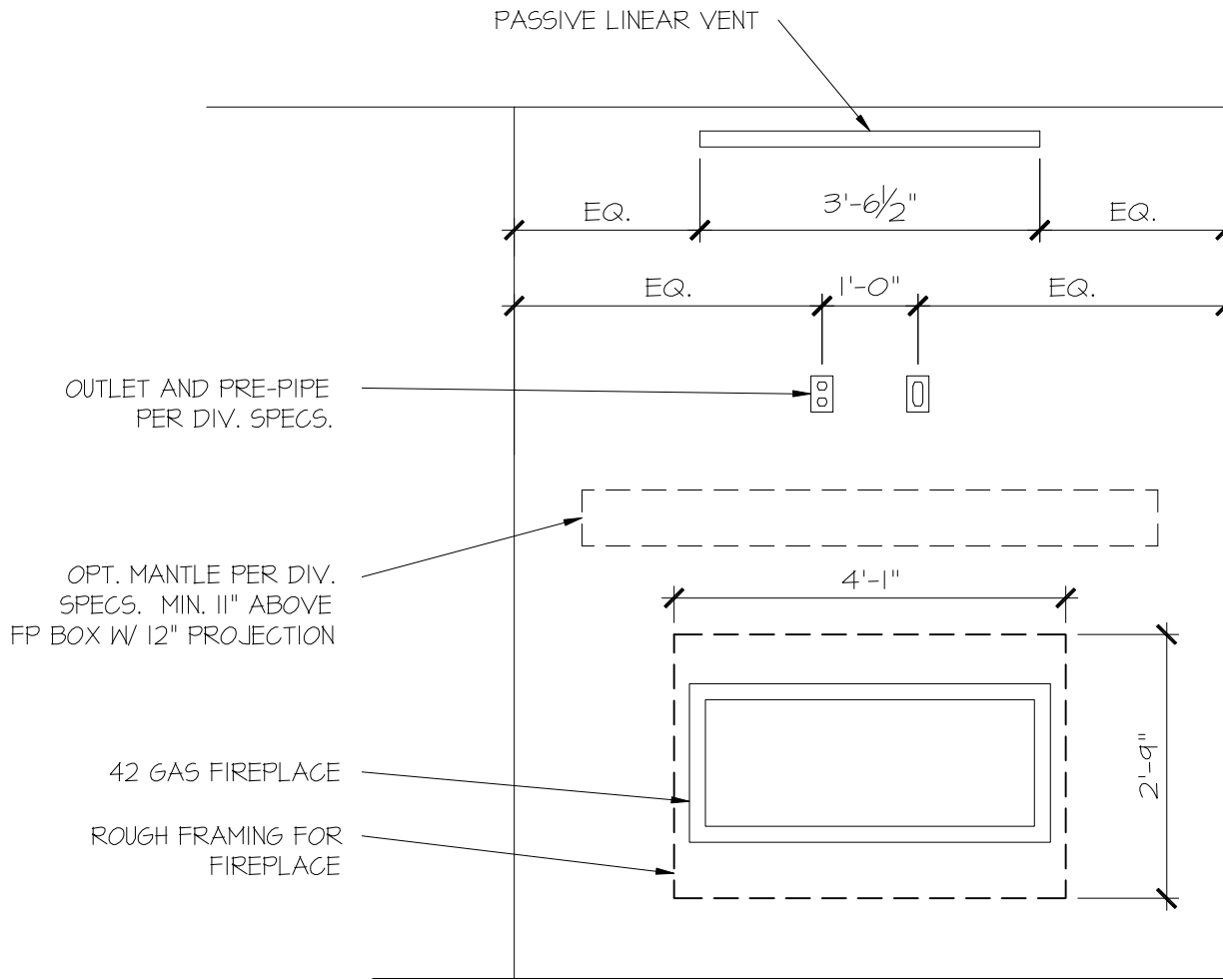
PARTIAL PLAN
NOVUS COSMO42

SCALE: 1/2" = 1'-0"



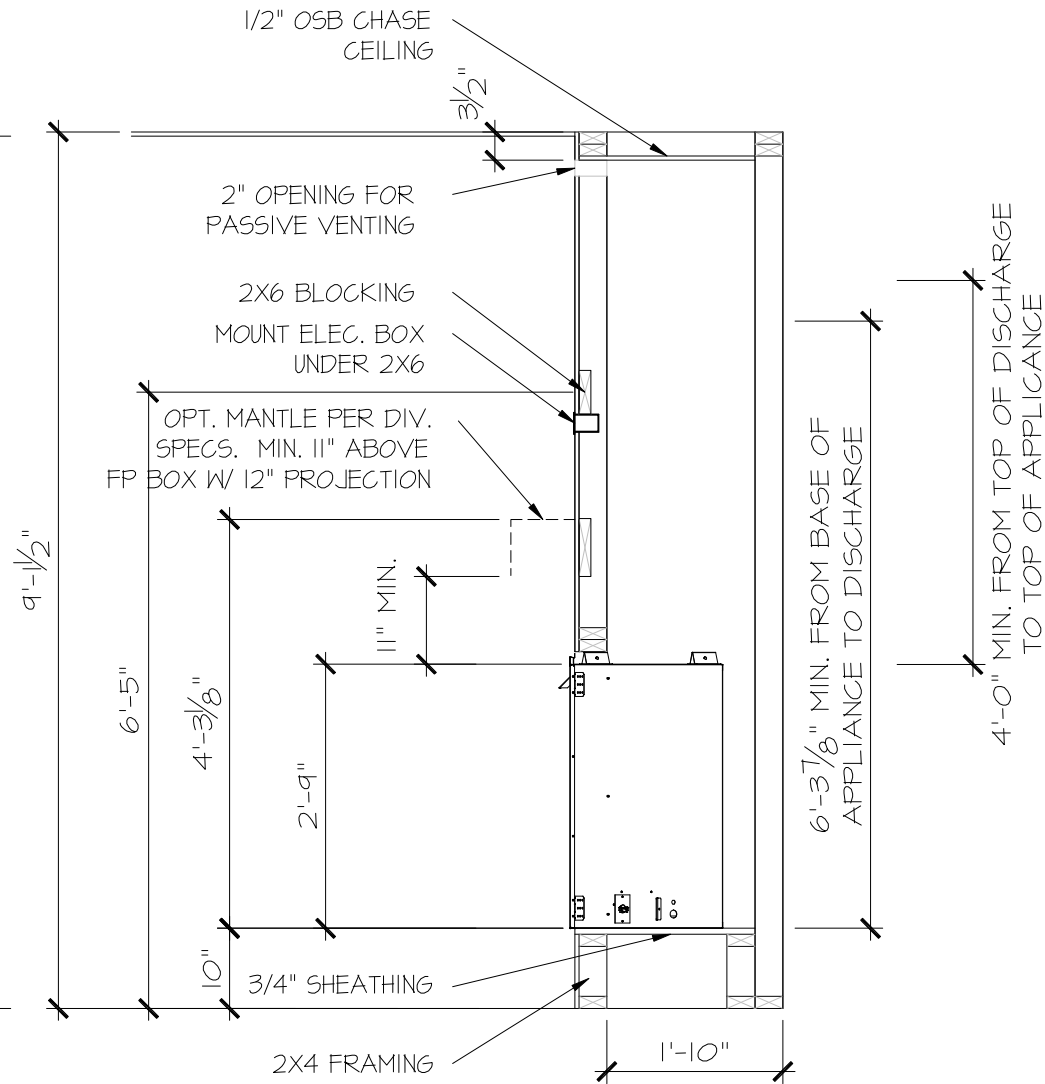
PARTIAL ELEVATION
NOVUS COSMO42

SCALE: 1/2" = 1'-0"



PARTIAL ELEVATION
NOVUS COSMO42

SCALE: 1/2" = 1'-0"



PARTIAL SECTION
NOVUS COSMO42

SCALE: 1/2" = 1'-0"

CONSULTANT LOGO

SEAL

DRAWN BY:
L. BEAVERS
DATE: 11-8-23
PLAN NO.
N/A
11 X 17 SCALE
24 X 36 SCALE

DRB
HOMES


HOUSE NAME:
RALE FIREPLACE DETAILS
DRAWING TITLE
**RALE FIREPLACE DETAIL
INTERIOR GAS UNITS**

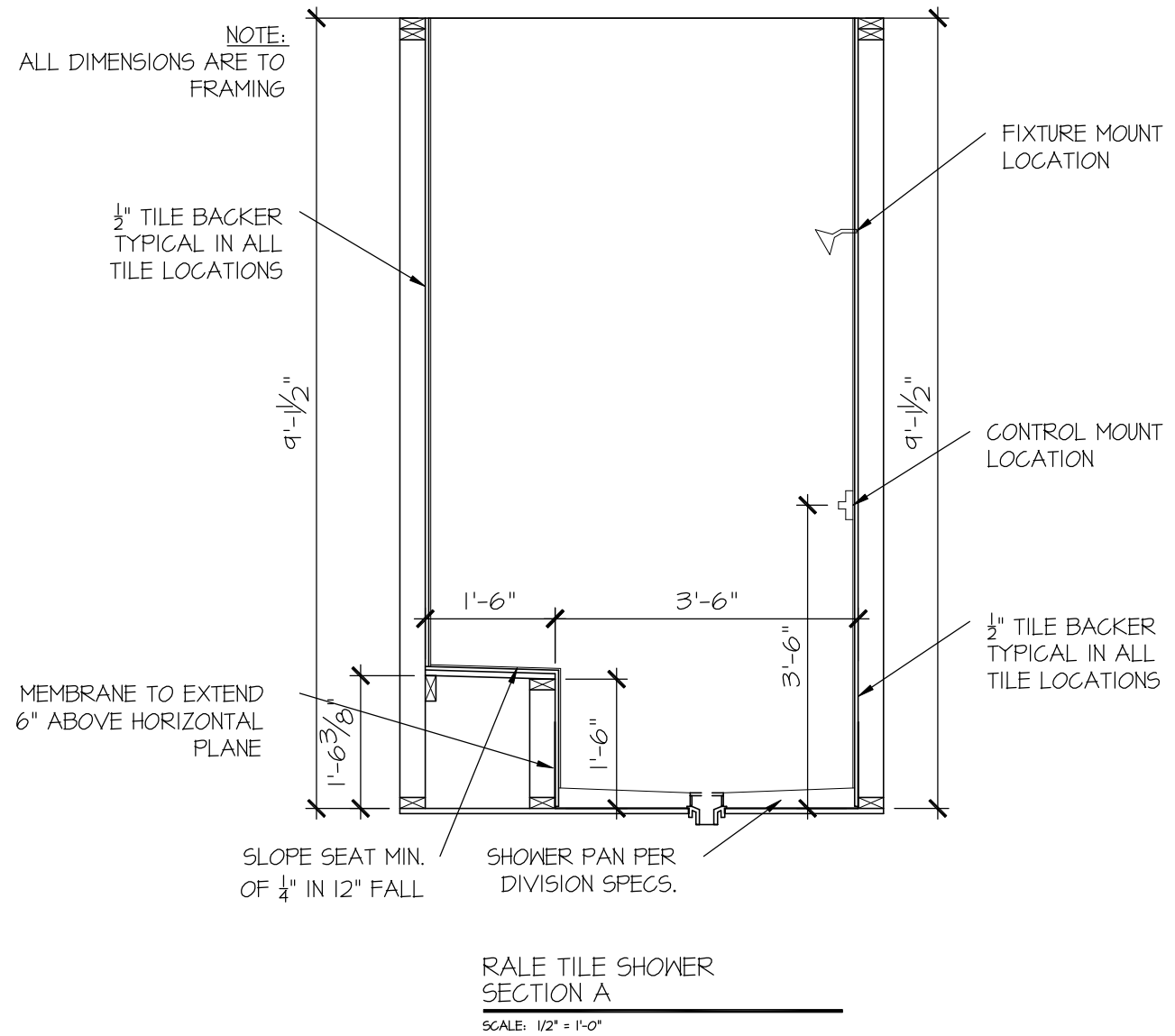
SHEET No.

11
10
11

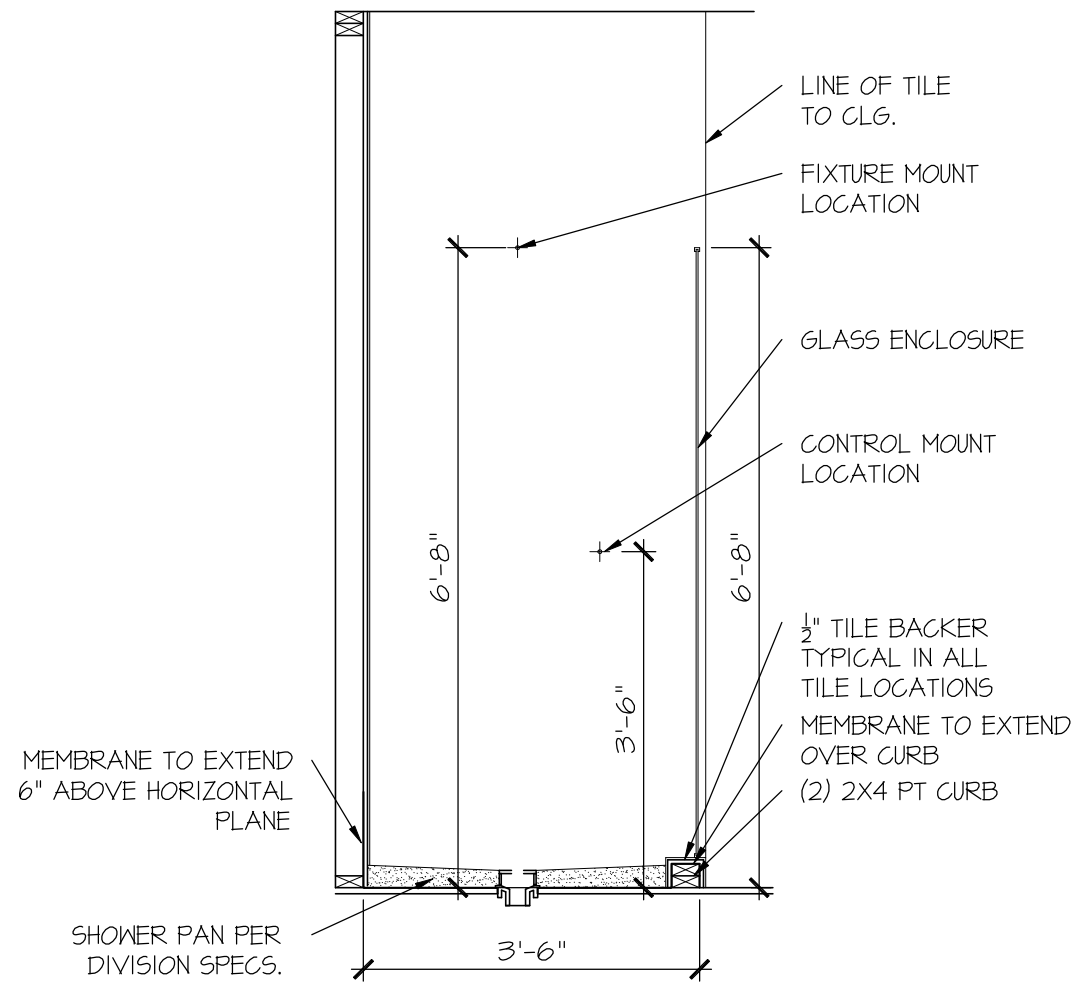


SHEET No.



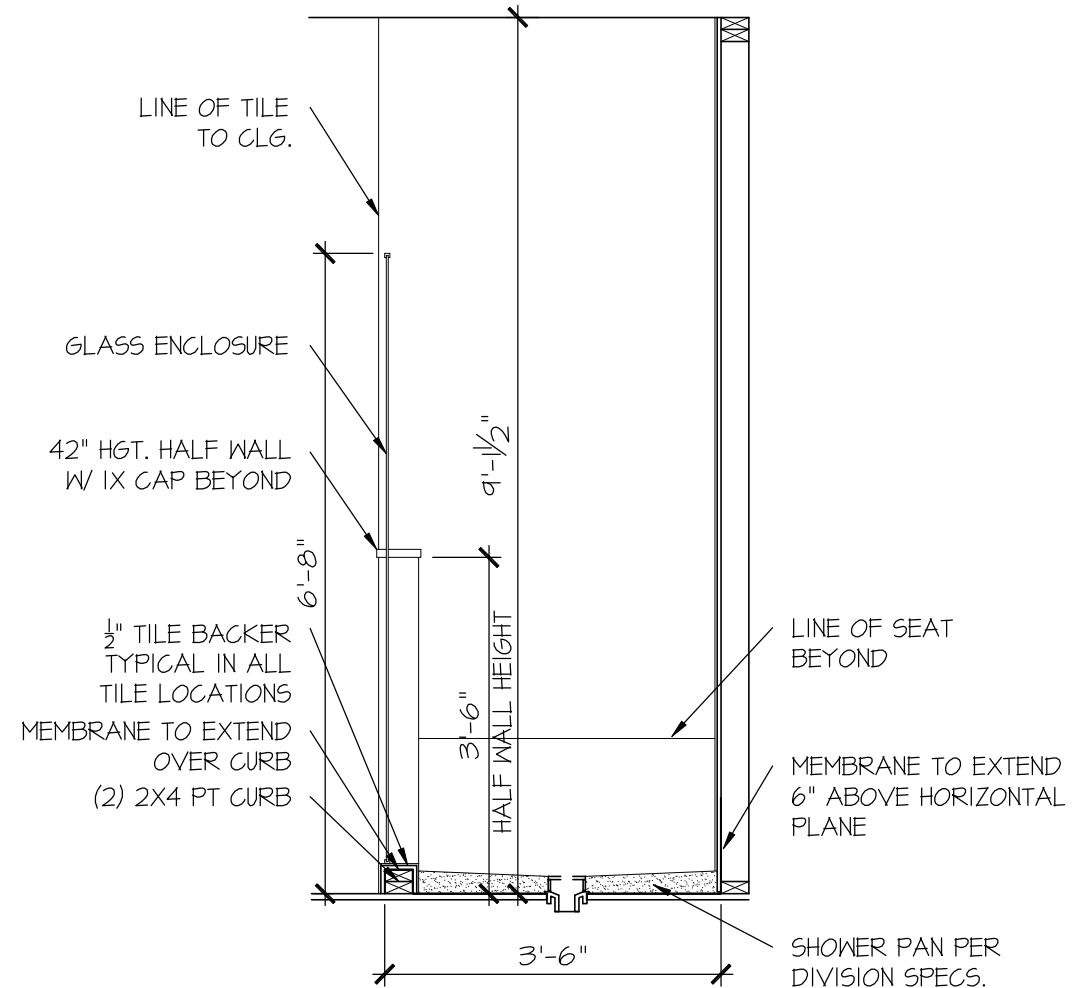


FILE: RALE TILE SHOWER DETAIL 8-2022.dwg DATE: 09-19-2022



RALE TILE SHOWER
SECTION B

SCALE: 1/2" = 1'-0"



RALE TILE SHOWER
SECTION C

SCALE: 1/2" = 1'-0"

CONSULTANT LOGO

SEAL

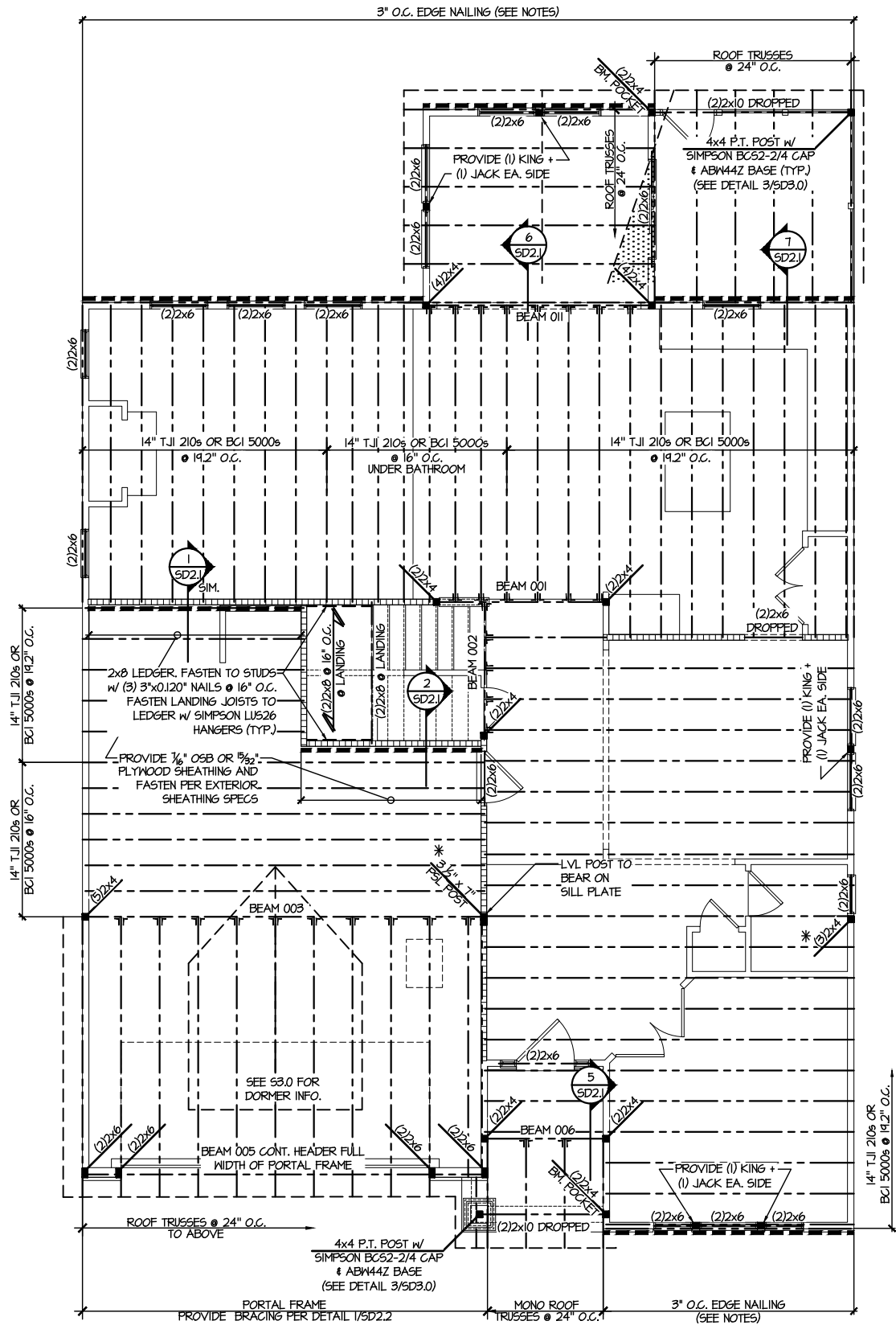
DRAWN BY:
L. BEAVERS
DATE: 9/1/22
PLAN NO.
11 X 17 SCALE
24 X 36 SCALE

DRB
HOMES

HOUSE NAME:
DRAWING TITLE
RALE TILE SHOWER DETAIL

SHEET No.

01.12



2ND FLOOR FRAMING PLAN
SCALE: 1/8"=1'-0"

REFER TO 50.0 FOR
TYPICAL STRUCTURAL NOTES
& SCHEDULES

ALTERNATE F.J. MANUFACTURERS

FLOOR JOISTS BY MANUFACTURERS OTHER THAN THOSE SHOWN ON PLAN SHALL CONFORM TO THE APA PERFORMANCE RELATED I-JOISTS DESIGN AND CONSTRUCTION GUIDE. MINIMUM JOIST PROPERTIES INCLUDING, BUT NOT LIMITED TO, ALLOWABLE SHEAR, ALLOWABLE MOMENT, STRENGTH, AND STIFFNESS, SHALL MEET OR EXCEED THOSE LISTED FOR THE PRI-60 SERIES I-JOISTS. ALL ALLOWABLE HOLES, BEARING STIFFENERS, AND JOIST TO JOIST CONNECTIONS ARE PER THE JOIST MANUFACTURER.

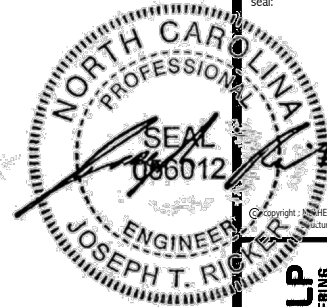
LEGEND

- INTERIOR BEARING WALL
- BEARING WALL ABOVE
- BEAM / HEADER
- INDICATES SHEAR WALL & EXTENT
- EXTENT OF OVERFRAMING
- J.L. METAL HANGER
- INDICATES POST ABOVE. PROVIDE SOLID BLOCKING UNDER POST OR JAMB ABOVE.
- INDICATES HOLD-DOWN OR STRAP. REFER TO SCHEDULE.

ENGINEERED BEAM MATERIAL SCHEDULE

BEAM NUMBER	LVL OPTION	PSL OPTION	LSL OPTION	FLITCH OPTION	STEEL OPTION
001	(2)3/4"x14" - F	3/2"x14" - F	(2)3/4"x14" - F	(2)2x12 + (1)1/2"x11/2" STEEL FLITCH PLATES - FB	W12x14 - F
002	(2)3/4"x14" - F	3/2"x14" - F	(2)3/4"x14" - F	(2)2x12 + (1)1/2"x11/2" STEEL FLITCH PLATES - FB	W12x14 - F
003	(3)3/4"x10" - FB or (2)3/4"x20" - FB	5/4"x10" - FB	N/A	(3)2x12 + (2)3/4"x11/2" STEEL FLITCH PLATES - FB	W12x26 - F
004	(2)3/4"x14" - F	3/2"x14" - F	(2)3/4"x14" - F	(2)2x12 + (1)1/2"x11/2" STEEL FLITCH PLATES - FB	W12x14 - F
005	(2)3/4"x11/2" - H cont.	3/2"x11/2" - H cont.	(2)3/4"x11/2" - H cont.	(3)2x12 + (2)3/4"x11/2" STEEL FLITCH PLATES - H cont.	N/A
005A	(3)3/4"x14" - H cont.	5/4"x14" - H cont.	N/A	(3)2x12 + (2)3/4"x11/2" STEEL FLITCH PLATES - H cont.	N/A
006	(1)3/4"x14" - F	3/2"x14" - F	(2)3/4"x14" - F	(2)2x12 + (1)1/2"x11/2" STEEL FLITCH PLATES - FB	W12x14 - F
007	(2)3/4"x11/2" - D	3/2"x11/2" - D	(2)3/4"x11/2" - D	(2)2x12 + (1)1/2"x11/2" STEEL FLITCH PLATES - D	W10x12 - D
008	(2)3/4"x16" - H cont.	3/2"x16" - H cont.	(3)3/4"x16" - H cont.	(3)2x12 + (2)1/2"x11/2" STEEL FLITCH PLATES - H cont.	N/A
009	(2)3/4"x14" - F	3/2"x14" - F	(2)3/4"x14" - F	(2)2x12 + (2)1/2"x11/2" STEEL FLITCH PLATES - F	W8x10 - F
010	(2)3/4"x14" - F	3/2"x14" - F	(2)3/4"x14" - F	(2)2x12 + (1)1/2"x11/2" STEEL FLITCH PLATES - FB	W12x14 - F
011	(2)3/4"x14" - F	3/2"x14" - F	(2)3/4"x14" - F	(2)2x12 + (1)1/2"x11/2" STEEL FLITCH PLATES - FB	W12x14 - F
012	(2)3/4"x11/2" - D	3/2"x11/2" - D	(2)3/4"x11/2" - D	(2)2x12 + (1)1/2"x11/2" STEEL FLITCH PLATES - D	W10x12 - D

- BEAM NOTATION:
 - "F" INDICATES FLUSH BEAM
 - "FT" INDICATES FLUSH TOP BEAM
 - "FB" INDICATES FLUSH BOTTOM BEAM
 - "D" INDICATES DROPPED BEAM
 - "H" INDICATES DROPPED OPENING HEADER
- REFER TO DETAIL D/SD2.0 FOR TYPICAL FLITCH BEAM CONNECTIONS
- REFER TO DETAIL E/SD2.0 FOR TYPICAL STEEL BEAM CONNECTIONS
- FOR FLUSH TOP BEAMS PROVIDE 2X STACKED PLATES BENEATH BEAM AS REQ'D. FASTEN PLATES IN SUCCESSION W/ (2) 3"x0.120" NAILS @ 8" O.C.
- FOR FLUSH BOTTOM BEAMS PROVIDE 2X STACKED PLATES ATOP BEAM AS REQ'D. FASTEN PLATES IN SUCCESSION W/ (2) 3"x0.120" NAILS @ 8" O.C.



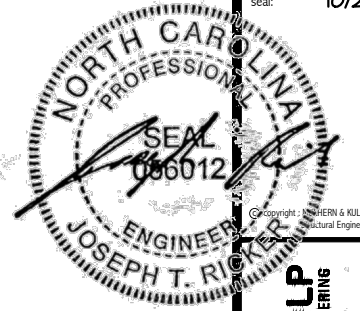
MULHERN+KULP
RESIDENTIAL STRUCTURAL ENGINEERING
3800 Bannockburn Ave., Building 4 - Asheville, NC 28802
P: 715-545-0001 • mulhern+kulp.com
NC LICENSE #C-3825

M&K project number:
126-22076
project mgr: JTR
drawn by: JGW
issue date: 10-27-25
REVISIONS:
date: initial:

DRB
HOMES

FLOOR FRAMING PLANS
FARM AT NEILS CREEK
LOT 52 - DRAYTON 4.1
RALEIGH, NC

Sheet:
S2.0



MULHERN+KULP
RESIDENTIAL STRUCTURAL ENGINEERING
300 Brookside Ave, Building 4 ▶ Ambler, PA 19002
p 215-646-5001 ▶ mulhern+kulp.com
NC LICENSE #C-3825



126-22076

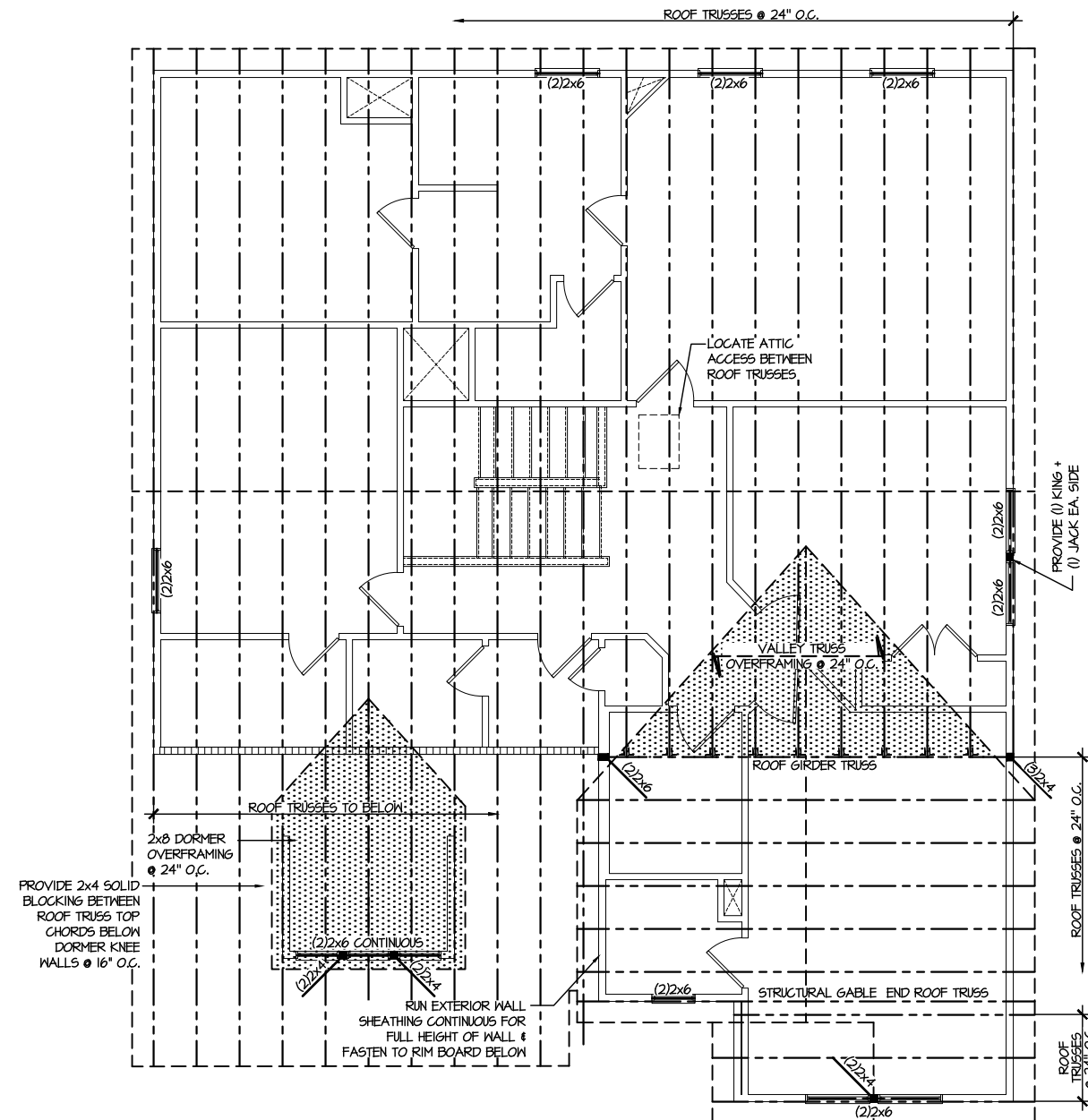
Project mgr: JTR
Drawn by: JGW
Issue date: 10-27-25

VISIONS:	
te:	initial:



ROOF FRAMING PLANS
FARM AT NEIL'S CREEK
LOT 52 - DRAYTON 41
RALEIGH, NC








S3.0



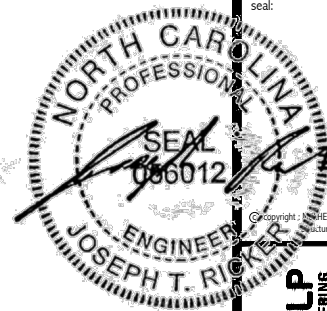
ROOF FRAMING PLAN

SCALE: 1/8"=1'-0'

LEGEND

-  INTERIOR BEARING WALL
 -  BEARING WALL ABOVE
 -  BEAM / HEADER
 -  INDICATES SHEAR WALL & EXTENT
 -  EXTENT OF OVERFRAMING
- JL METAL HANGER**
-  INDICATES POST ABOVE. PROVIDE SOLID BLOCKING UNDER POST OR JAMB ABOVE.
 - ▶  INDICATES HOLD-DOWN OR STRAP. REFER TO SCHEDULE.

REFER TO SO.0 FOR
TYPICAL STRUCTURAL NOTES
& SCHEDULES



MULHERN+KULP
RESIDENTIAL STRUCTURAL ENGINEERING
300 Bannockburn Ave., Building 4 - Asheville, NC 28802
P: 715-546-8001 • mulhern+kulp.com
NC LICENSE #C-3825



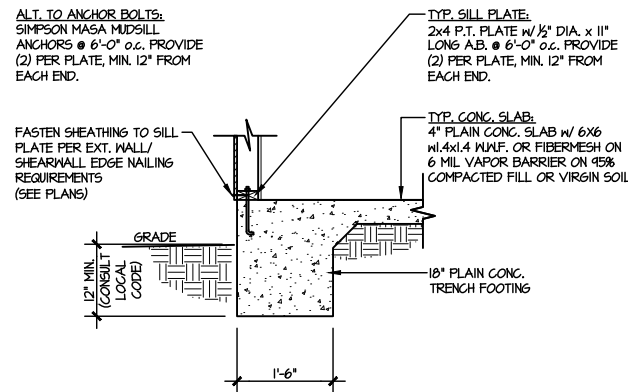
M&K project number:
126-22076
project mgr: JTR
drawn by: JGW
issue date: 10-27-25

REVISIONS:
date: initial:

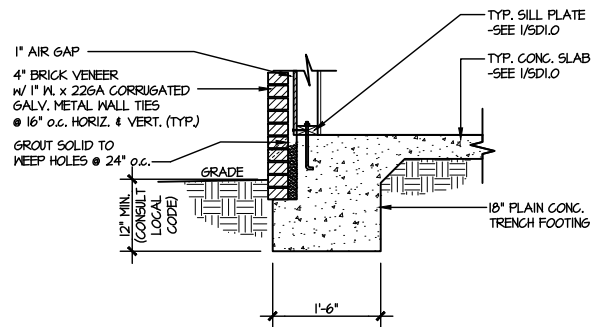
DRB
HOMES

FOUNDATION DETAILS
FARM AT NEIL'S CREEK
LOT 52 - DRAYTON 4.1
RALEIGH, NC

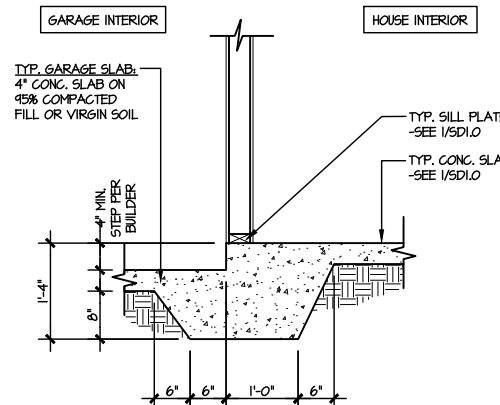
Sheet:
SD1.0



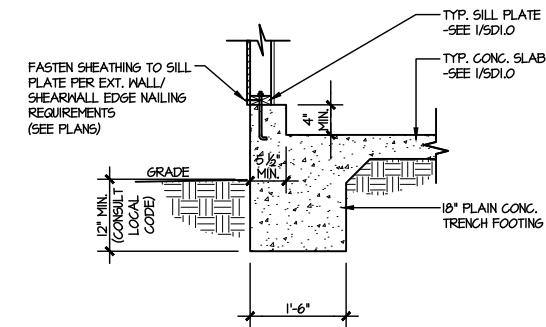
1 TYPICAL SLAB ON GRADE PERIMETER FOOTING
SCALE: 3/8"=1'-0"



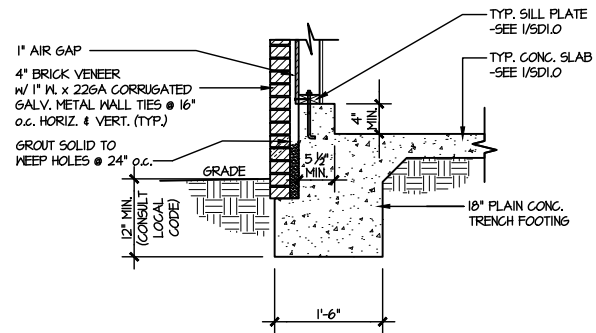
2 TYPICAL SLAB ON GRADE PERIMETER FOOTING
SCALE: 3/8"=1'-0"



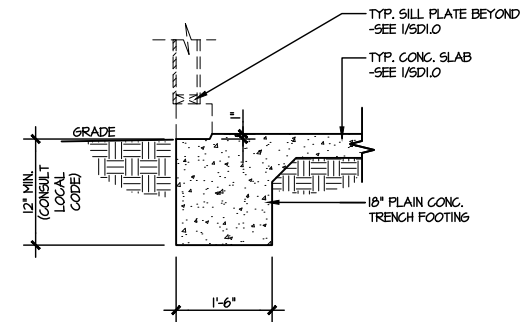
3 TYPICAL MONOLITHIC INTERIOR GARAGE FOOTING
SCALE: 3/8"=1'-0"



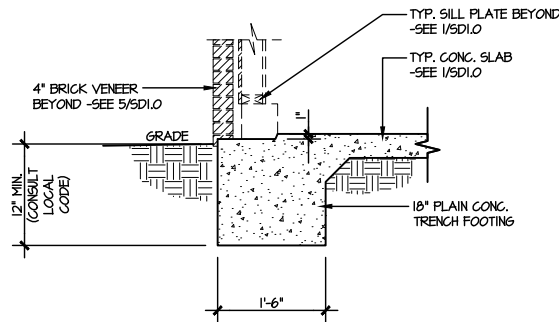
4 TYPICAL SLAB ON GRADE GARAGE PERIMETER FOOTING
SCALE: 3/8"=1'-0"



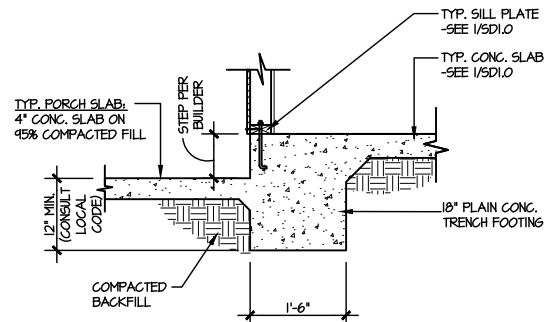
5 TYPICAL SLAB ON GRADE GARAGE PERIMETER FOOTING
SCALE: 3/8"=1'-0"



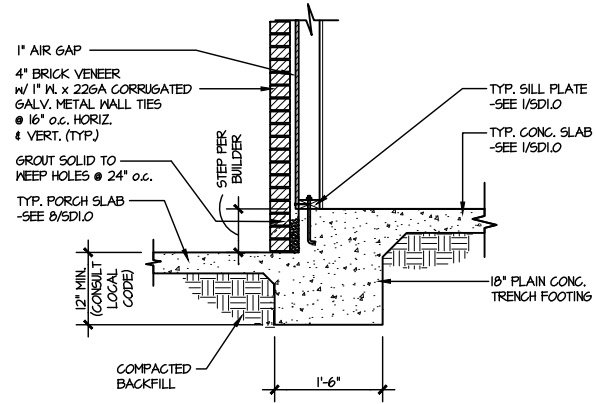
6 TYPICAL SLAB ON GRADE GARAGE ENTRY @ PERIMETER FOOTING
SCALE: 3/8"=1'-0"



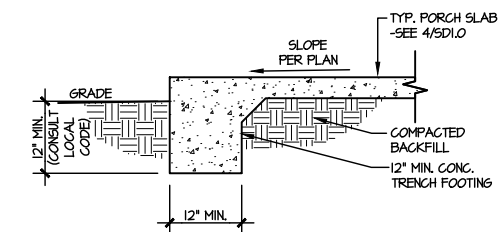
7 TYPICAL SLAB ON GRADE GARAGE ENTRY @ PERIMETER FOOTING
SCALE: 3/8"=1'-0"



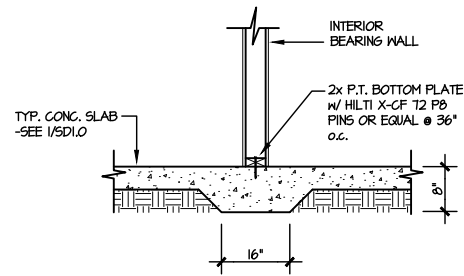
8 TYPICAL SLAB ON GRADE PERIMETER FOOTING @ PORCH/PATIO
SCALE: 3/8"=1'-0"



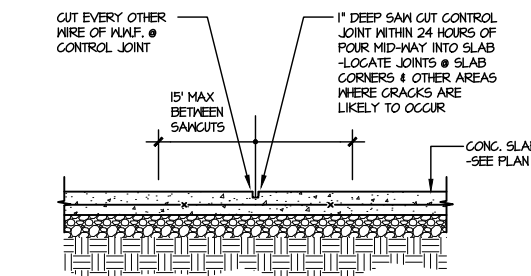
9 TYPICAL SLAB ON GRADE PERIMETER FOOTING @ PORCH/PATIO
SCALE: 3/8"=1'-0"



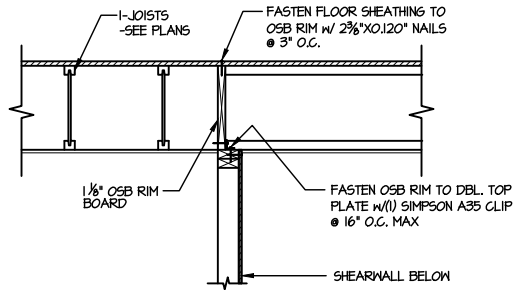
10 TYPICAL FOOTING @ PORCH SLAB
SCALE: 3/8"=1'-0"



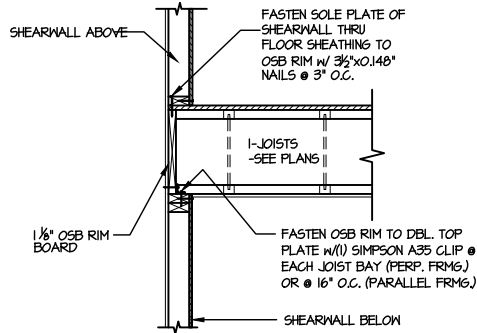
11 TYPICAL THICKENED SLAB @ INTERIOR BEARING WALL
SCALE: 3/8"=1'-0"



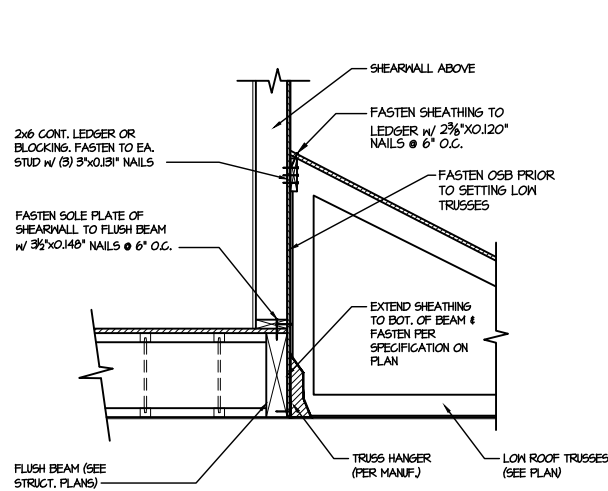
A TYPICAL CONTROL JOINT
SCALE: 3/8"=1'-0"



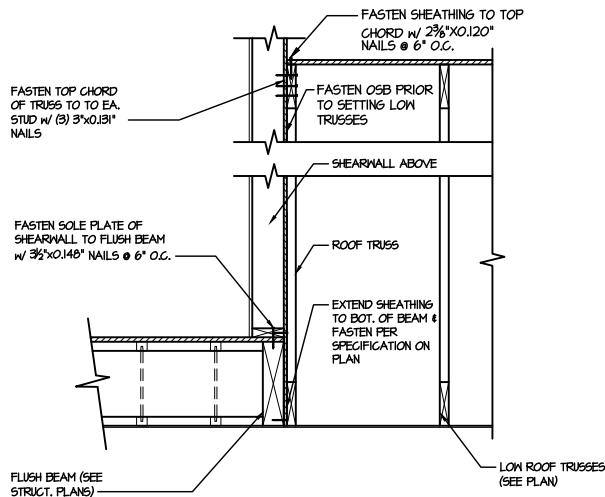
1 SHEAR TRANSFER DETAIL @ INTERIOR SHEARWALL BELOW
SCALE: 3/4"=1'-0" PARALLEL FRAMING



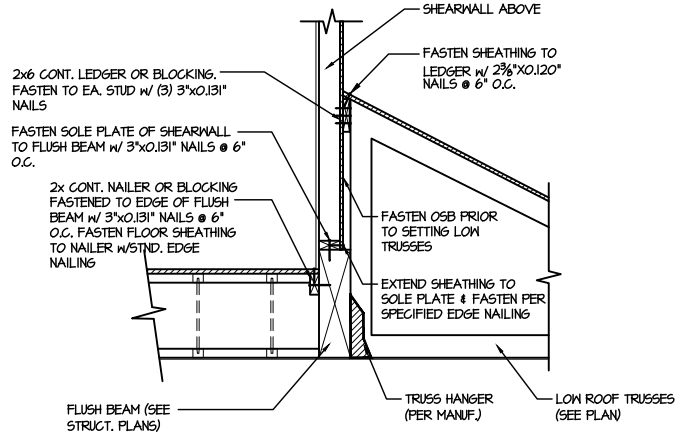
2 SHEAR TRANSFER DETAIL @ INT. SHEARWALL ABOVE & BELOW
SCALE: 3/4"=1'-0" EDGE OF FRAMING



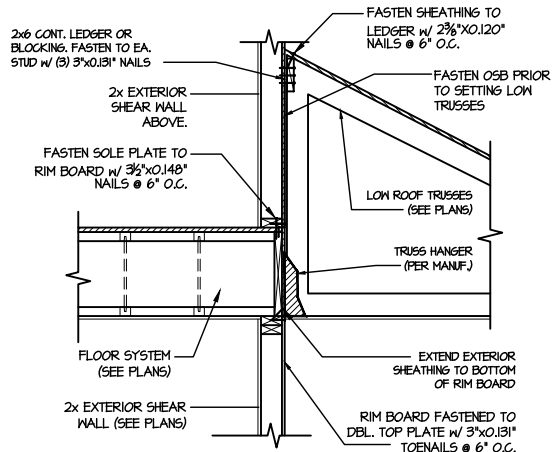
5 SHEAR TRANSFER DETAIL @ EXTERIOR SHEARWALL ABOVE
SCALE: 3/4"=1'-0"



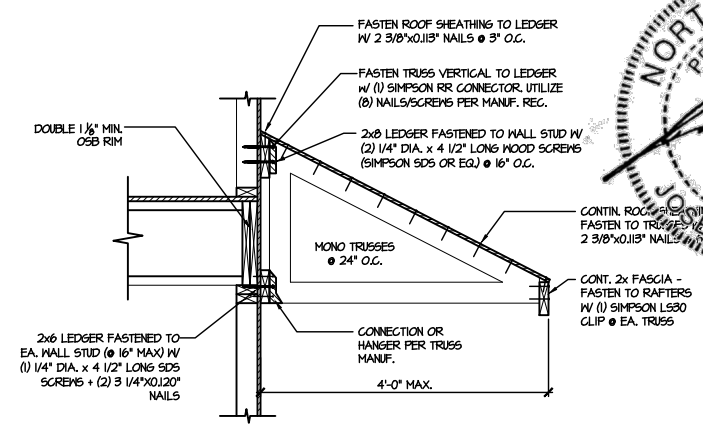
6 SHEAR TRANSFER DETAIL @ EXTERIOR SHEARWALL ABOVE
SCALE: 3/4"=1'-0"



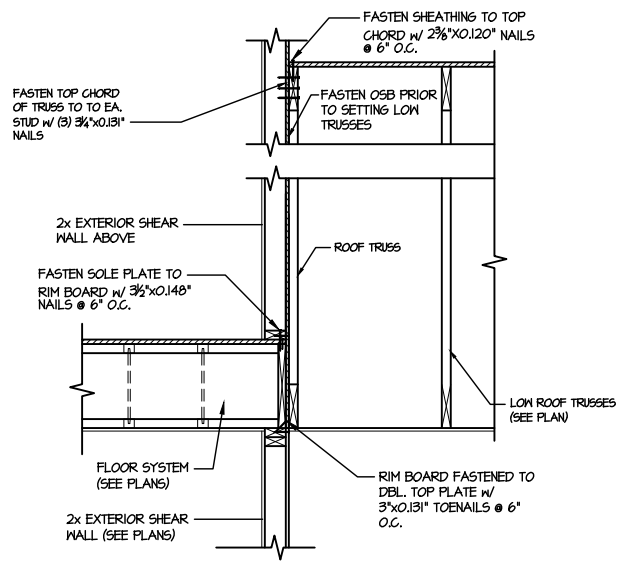
3 SHEAR TRANSFER DETAIL @ EXTERIOR SHEARWALL ABOVE
SCALE: 3/4"=1'-0"



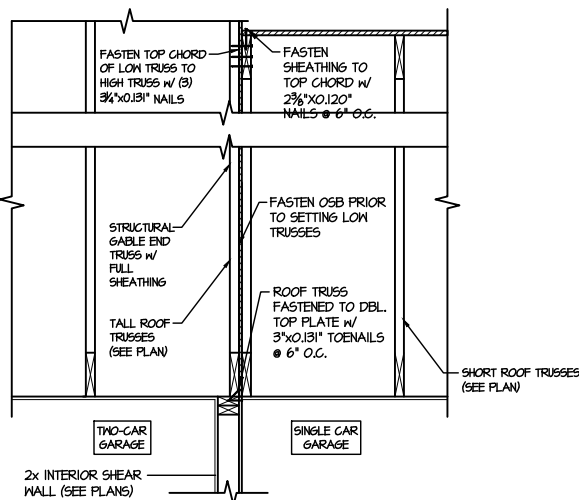
7 TYPICAL SHEAR TRANSFER DETAIL BETWEEN FLOORS @ INTERIOR WALL
SCALE: 3/4"=1'-0"



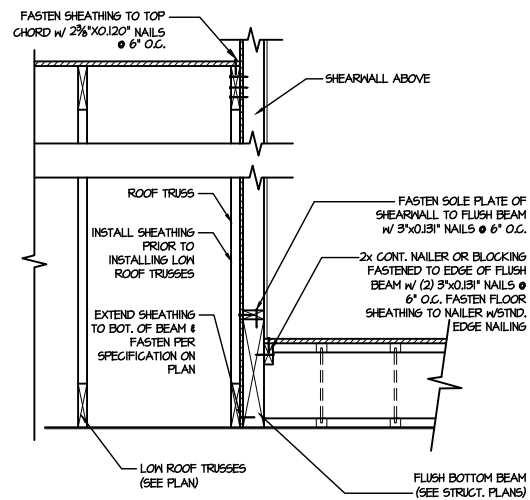
4 DETAIL @ SHED ROOF
SCALE: 3/8"=1'-0"



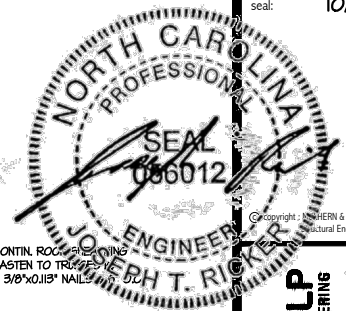
8 TYPICAL SHEAR TRANSFER DETAIL BETWEEN FLOORS @ INTERIOR WALL
SCALE: 3/4"=1'-0"

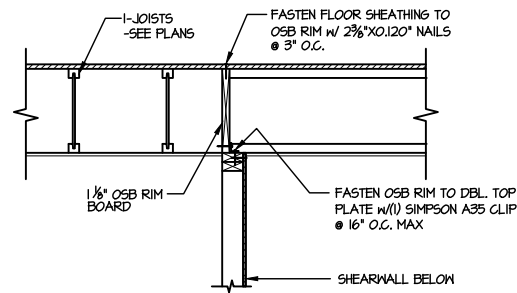


9 TYPICAL SHEAR TRANSFER DETAIL BETWEEN GARAGE BAYS
SCALE: 3/4"=1'-0"

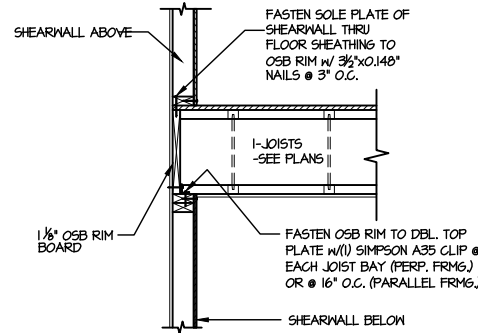


13 SHEAR TRANSFER DETAIL @ EXTERIOR SHEARWALL ABOVE
SCALE: 3/4"=1'-0"

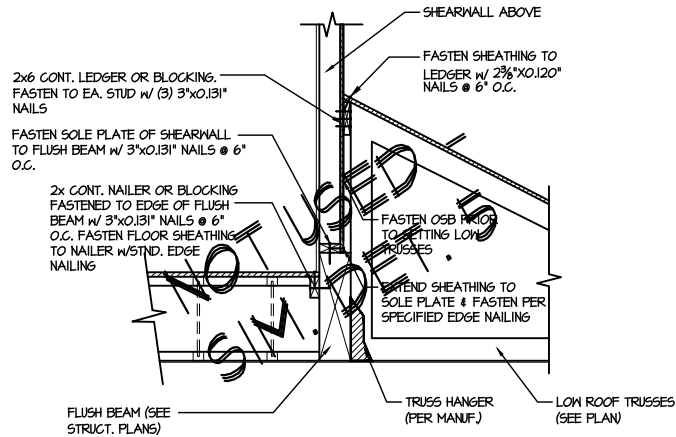




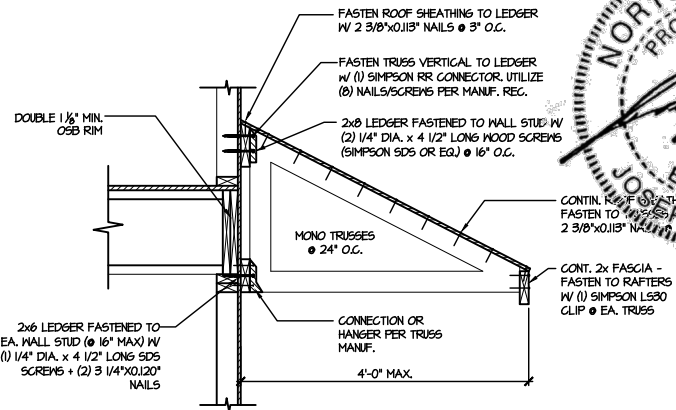
1 SHEAR TRANSFER DETAIL @
INTERIOR SHEARWALL BELOW
SCALE: 3/4"=1'-0" PARALLEL FRAMING



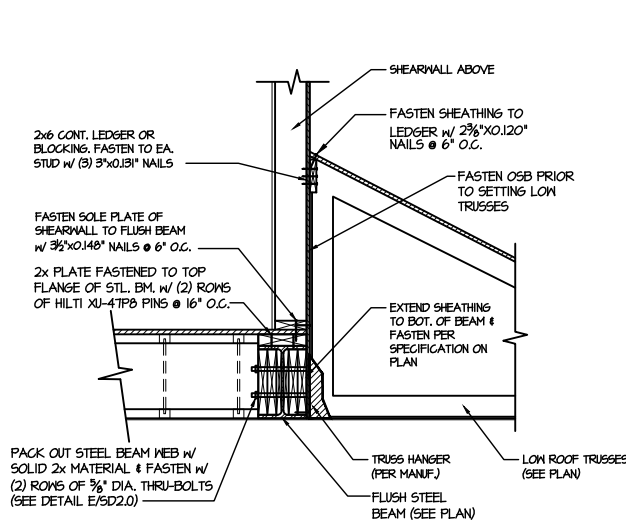
2 SHEAR TRANSFER DETAIL @ INT.
SHEARWALL ABOVE & BELOW
SCALE: 3/4"=1'-0" EDGE OF FRAMING



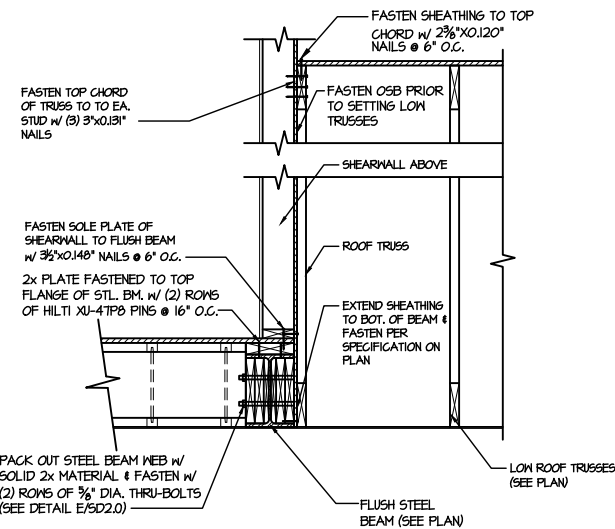
3 SHEAR TRANSFER DETAIL @
EXTERIOR SHEARWALL ABOVE
SCALE: 3/4"=1'-0"



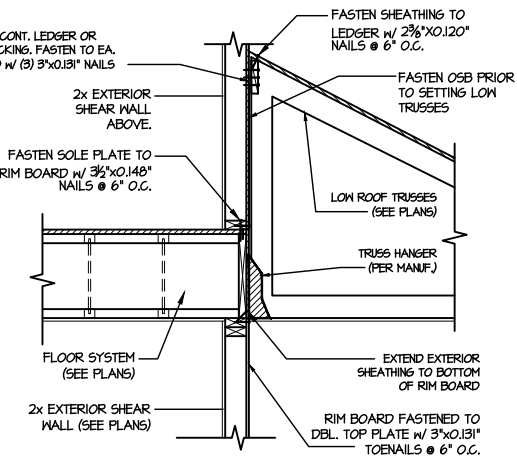
4 DETAIL @ SHED ROOF
SCALE: 3/8"=1'-0"



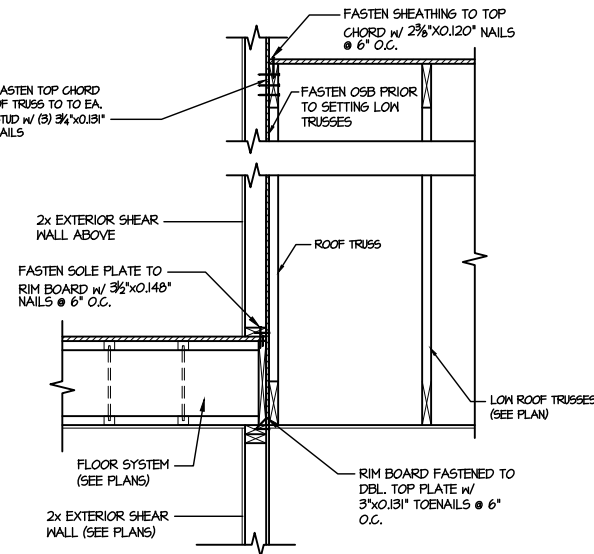
5 SHEAR TRANSFER DETAIL @
EXTERIOR SHEARWALL ABOVE
SCALE: 3/4"=1'-0"



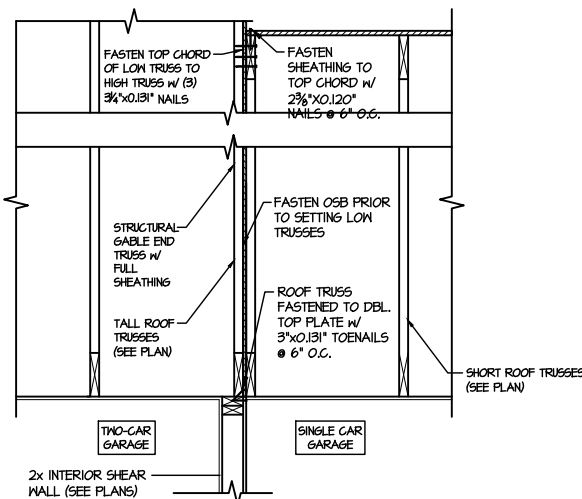
6 SHEAR TRANSFER DETAIL @
EXTERIOR SHEARWALL ABOVE
SCALE: 3/4"=1'-0"



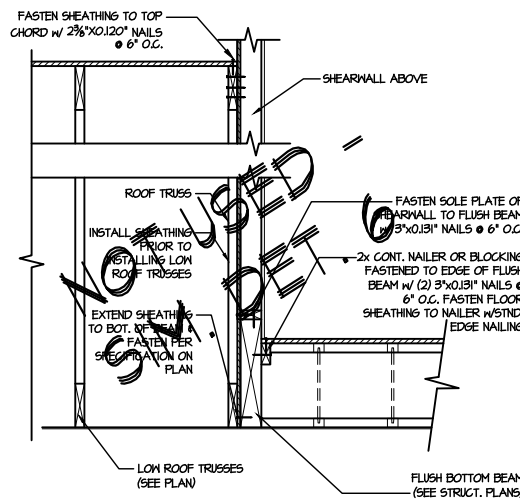
7 TYPICAL SHEAR TRANSFER DETAIL
BETWEEN FLOORS @ INTERIOR WALL
SCALE: 3/4"=1'-0"



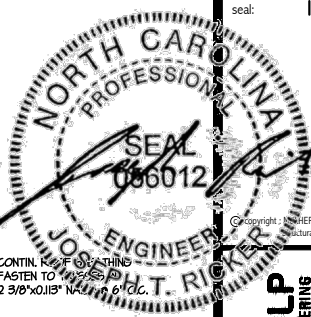
8 TYPICAL SHEAR TRANSFER DETAIL
BETWEEN FLOORS @ INTERIOR WALL
SCALE: 3/4"=1'-0"



9 TYPICAL SHEAR TRANSFER DETAIL
BETWEEN GARAGE BAYS
SCALE: 3/4"=1'-0"



13 SHEAR TRANSFER DETAIL @
EXTERIOR SHEARWALL ABOVE
SCALE: 3/4"=1'-0"



M&K project number:
126-22076

project mgr: **JTR**

drawn by: **JGW**

issue date: **10-27-25**

REVISIONS:

date:	initial:

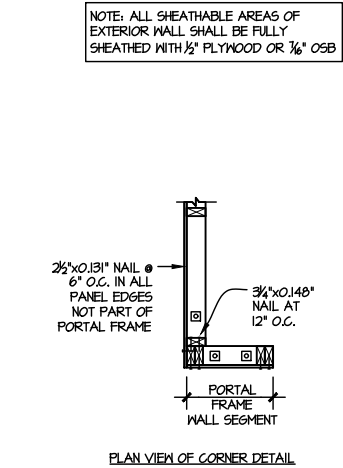
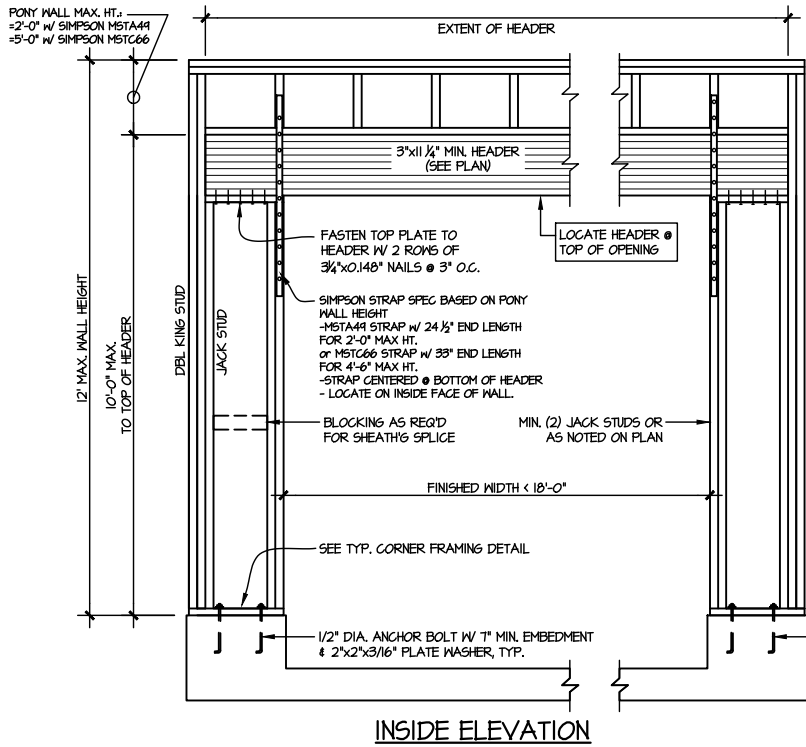
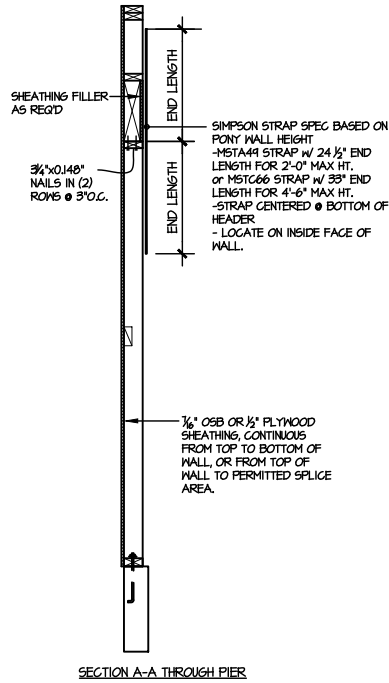
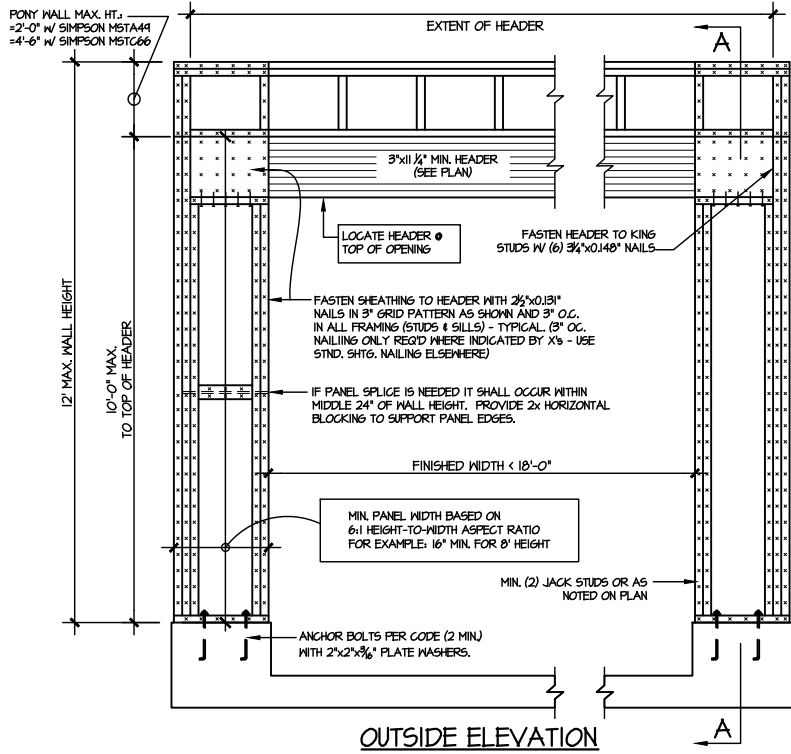


FRAMING DETAILS

FARM AT NEIL'S CREEK

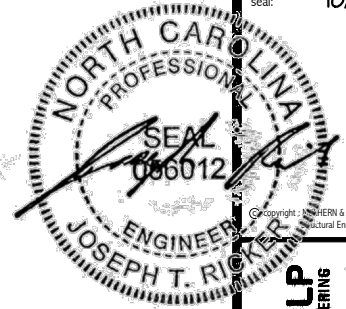
LOT 52 - DAYTON 4.1

RALEIGH, NC



- ALTERNATIVES TO 1/2" DIA. ANCHOR BOLT:
- 1/2" DIA. x 6" LONG SIMPSON TITEN HD
 - 1/2" DIA. THREADED ROD EPOXY SET w/ 4 1/2" EMBED. (MIN UTILIZING HILTI HY200 EPOXY ANCHORING SYSTEM (OR EQUAL))

TWO SIDED GARAGE PORTAL FRAME BRACING
ELEVATION ON CONCRETE STEM
SCALE: N.T.S.

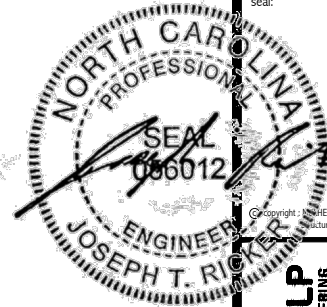
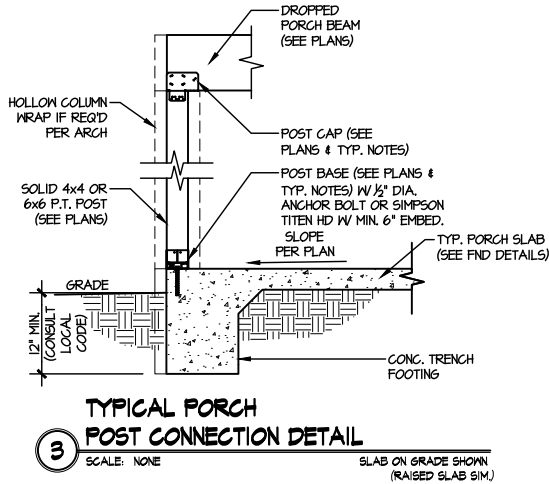


M&K project number:
126-22076
project mgr: JTR
drawn by: JGW
issue date: 10-27-25
REVISIONS:
date: initial:



FRAMING DETAILS
FARM AT NEIL'S CREEK
LOT 52 - DRAYTON 4.1
RALEIGH, NC

Sheet:
SD2.2



M&K project number:
126-22076

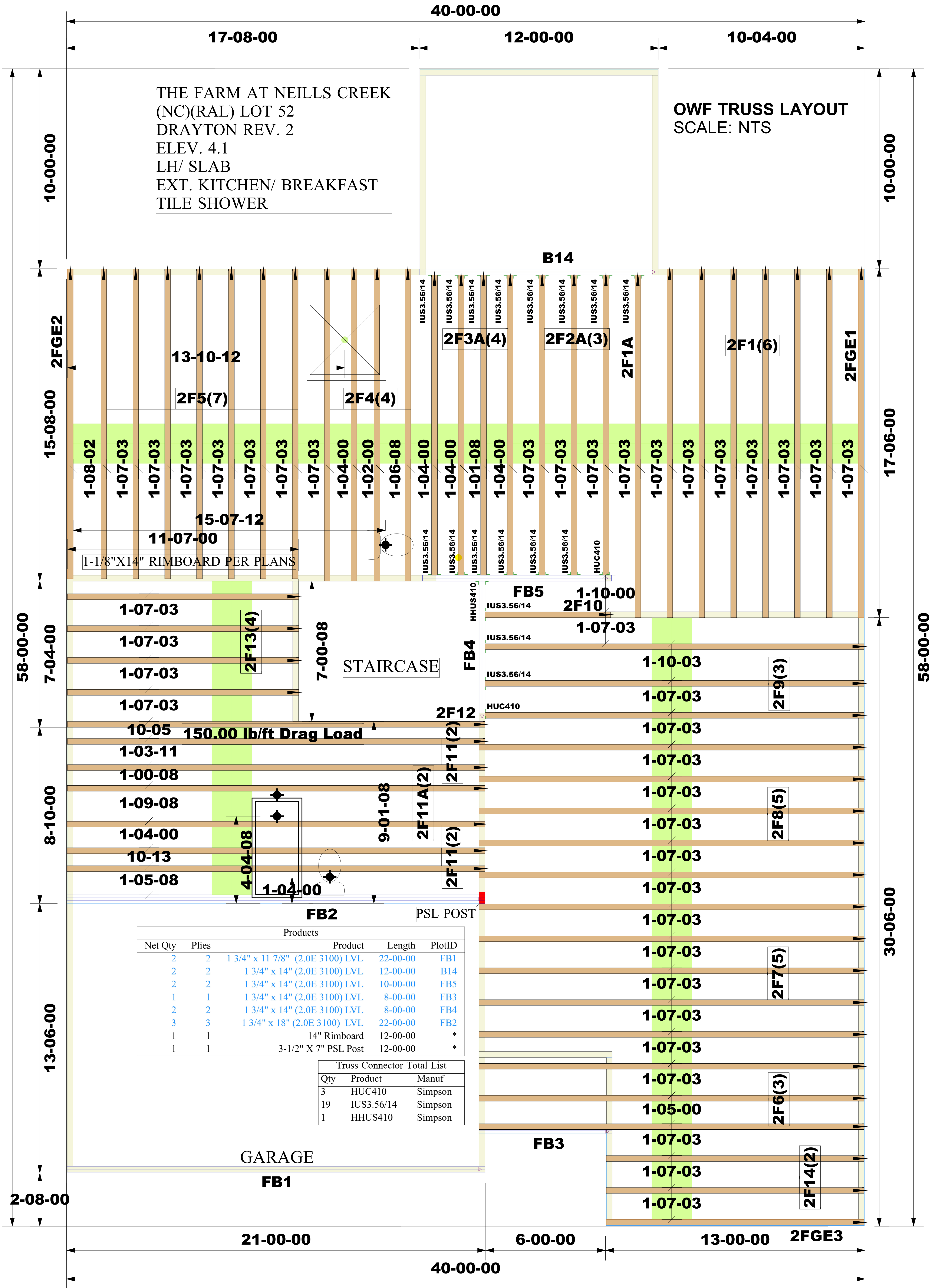
project mgr: JTR
drawn by: JGW
issue date: 10-27-25

REVISIONS:
date: initial:



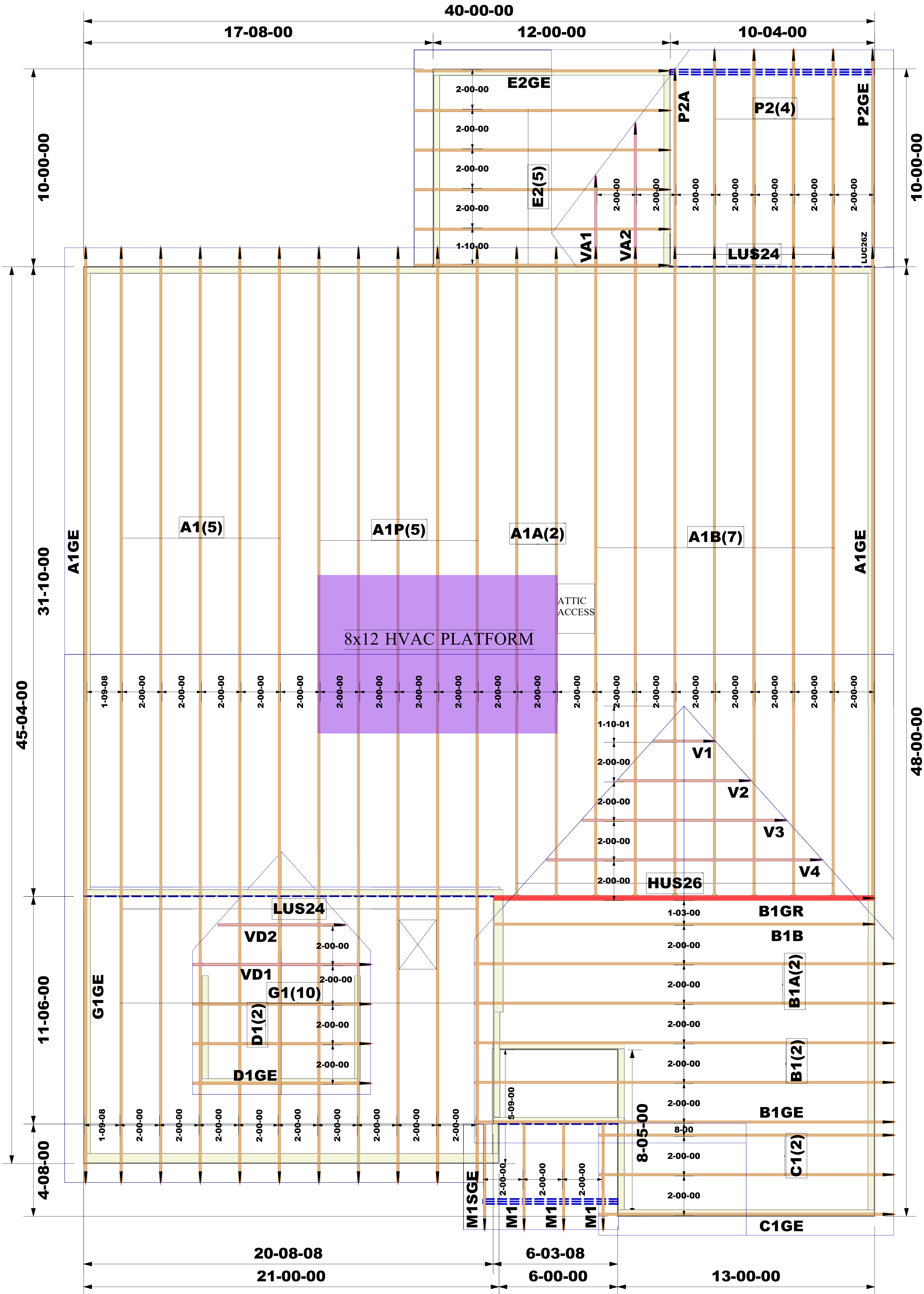
FRAMING DETAILS
FARM AT NEIL'S CREEK
LOT 52 - DRAYTON 4.1
RALEIGH, NC

Sheet:
SD3.0



Job #:	WARNING: CONVENTIONAL FRAMING, ERECTION AND/OR PERMANENT BRACING IS NOT THE RESPONSIBILITY OF THE TRUSS DESIGNER, PLATE MANUFACTURER, OR THE TRUSS MANUFACTURER. PERSONS ERECTING TRUSSES ARE CAUTIONED TO SEEK PROFESSIONAL ADVICE REGARDING THE ERECTION BRACING WHICH IS ALWAYS REQUIRED TO PREVENT TOPPLING AND DOMINATING DURING ERECTION, AND PERMANENT BRACING WHICH MAY BE REQUIRED IN SPECIFIC APPLICATIONS. SEE "BRACING WOOD TRUSSES COMMENTARY" AND RECOMMENDATIONS" (BCSI 1) FOR FURTHER INFORMATION. TRUSSES SHALL BE INSTALLED IN A STRAIGHT AND PLUMB POSITION WHERE NO SHEATHING IS APPLIED DIRECTLY TO TOP AND/OR BOTTOM CHORDS, THEY SHALL BE BRACED AS SPECIFIED ON THE ENGINEERED DESIGN. TRUSSES SHALL BE HANDLED WITH REASONABLE CARE DURING ERECTION TO PREVENT DAMAGE OR PERSONAL INJURY.	NOTE: IT IS THE RESPONSIBILITY OF THE BUILDING DESIGNER OR ARCHITECT TO PROVIDE AN APPROPRIATE CONNECTION FOR TRUSSES TO SUPPORTING STRUCTURE PER REACTIONS SHOWN ON TRUSS ENGINEERING. SPECIAL CONSIDERATIONS FOR MECHANICAL EQUIPMENT AND/OR PLUMBING (AND THEIR CONNECTIONS) IN TRUSS SPACE MUST BE DIAGRAMMED BY BUILDER ON APPROVED TRUSS LAYOUT PRIOR TO FABRICATION. THIS COMPANY IS A TRUSS MANUFACTURER WHOSE RESPONSIBILITIES ARE LIMITED TO THOSE DESCRIBED IN WTCA 1-1995 "DESIGN RESPONSIBILITIES". ACCORDINGLY, IT DISCLAIMS ANY RESPONSIBILITIES AND/OR LIABILITY FOR THE CONSTRUCTION DESIGN, DRAWINGS, DOCUMENTS INCLUDING THE INSTALLATION, AND BRACING OF TRUSSES MANUFACTURED BY THIS COMPANY.	Customer: DRB Raleigh	 <i>Third-Party Quality Assurance Licensee</i> TPI Plant W974 Structural, LLC 201 Poplar Avenue Thurmont, MD 21788 Phone: 301-271-7591	
2510-6875			Job Name: The Farm at Neills Creek Lot 00.0052 OWF		
Designer:			Lot #: 00.0052		
Roger Espinoza			Model Name: Drayton-Rale		
Sales Rep:					
Robbie Zarobinski					

ROOF TRUSS LAYOUT
SCALE: NTS



THE FARM AT NEILL'S CREEK LOT 00.0052
(NC)(RAL)
DRAYTON REV.2
EL. 4.1
COVERED PORCH
EXTENDED BREAKFAST
GARAGE LEFT