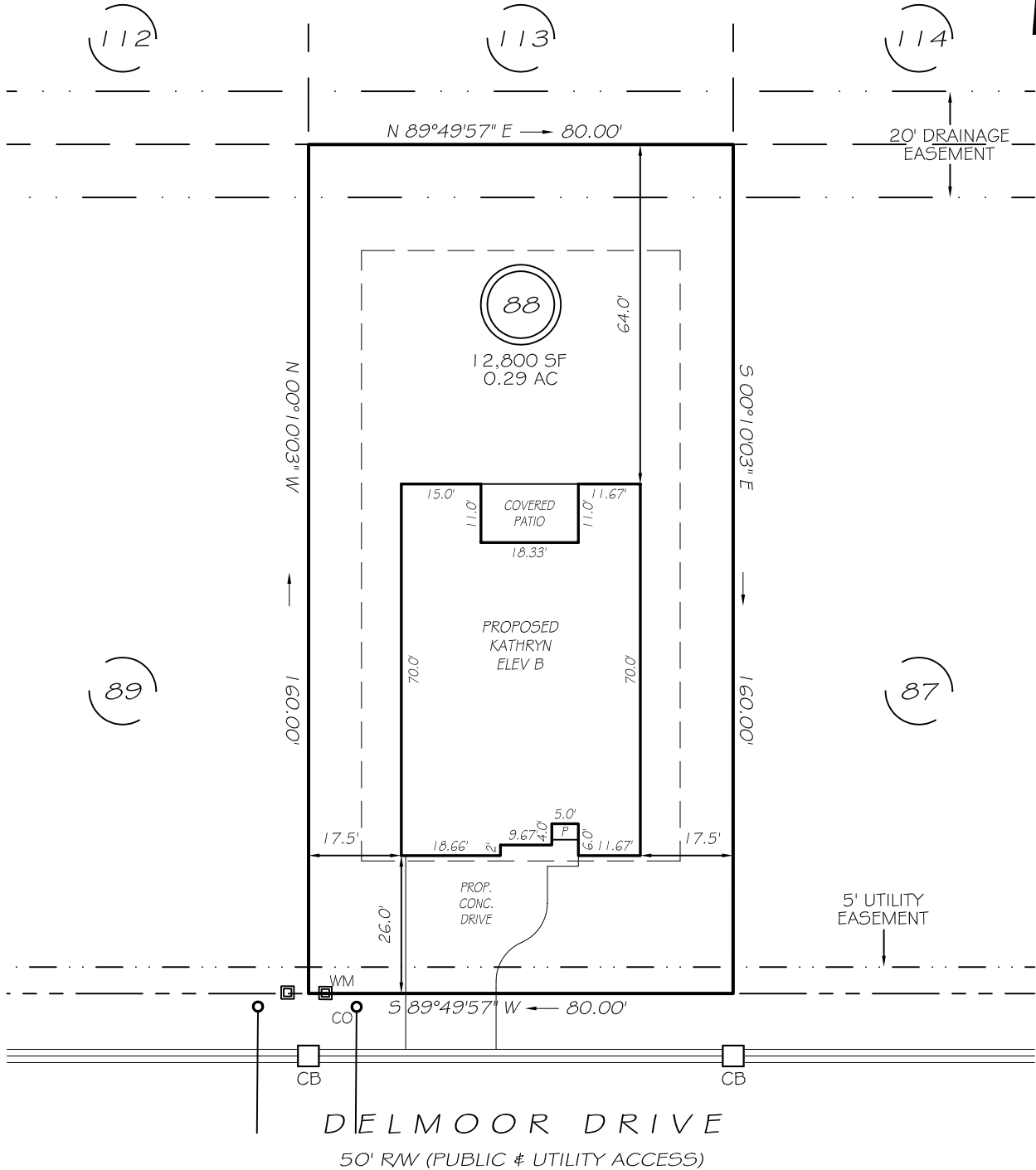


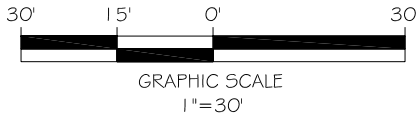
I, MICHAEL P. GRIFFIN, certify that under my direction and supervision this map was drawn from an actual field survey; that the error of closure of the survey as calculated by coordinates is 1: 10,000+; that the area shown hereon was calculated by coordinates. Dashed lines shown hereon were not surveyed.

Witness my hand and seal this day of MONTH 2025.



BK 2025 PG. 232  
WAKE CO. REGISTRY

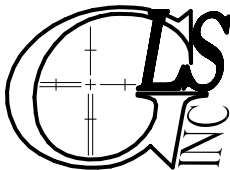
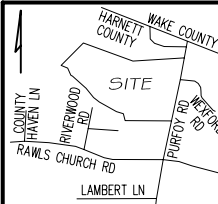
IMPERVIOUS AREAS	
HOUSE	2914 SQ. FT.
DRIVE & WALKS	642 SQ. FT.
COVERED PATIO	202 SQ. FT.
TOTAL	3758 SQ. FT.
ALLOWED	5000 SQ. FT.



SETBACKS	
FRONT	25'
REAR	20'
SIDE	10'
CORNER SIDE	20'

**P R E L I M I N A R Y**  
NOT FOR RECORDATION,  
SALES OR CONVEYANCE

EIP	EXISTING IRON PIPE	FES	FLARED END SECTION
RBS	REBAR SET	WM	WATER METER
R/W	RIGHT OF WAY	CO	CLEAN OUT
N/F	NOW OR FORMERLY	FH	FIRE HYDRANT
EIS	EXISTING IRON STAKE	CB	CATCH BASIN



GRIFFIN LAND SURVEYING, INC.

P. O. BOX 148  
FUQUAY-VARINA, NC 27526  
(919) - 567 - 1963

FIRM LIC.# C-1345

**PLOT PLAN**  
FOR

**D.R. HORTON**

**EAGLE CREEK SUBDIVISION**

**LOT 88**

DELMOOR DRIVE

FUQUAY-VARINA, N.C.

HARNETT COUNTY HECTORS TOWNSHIP

DRAWN BY **KDF**

DATE **5/1/25**

CHECKED BY **MPG**

SCALE **1" = 30'**