

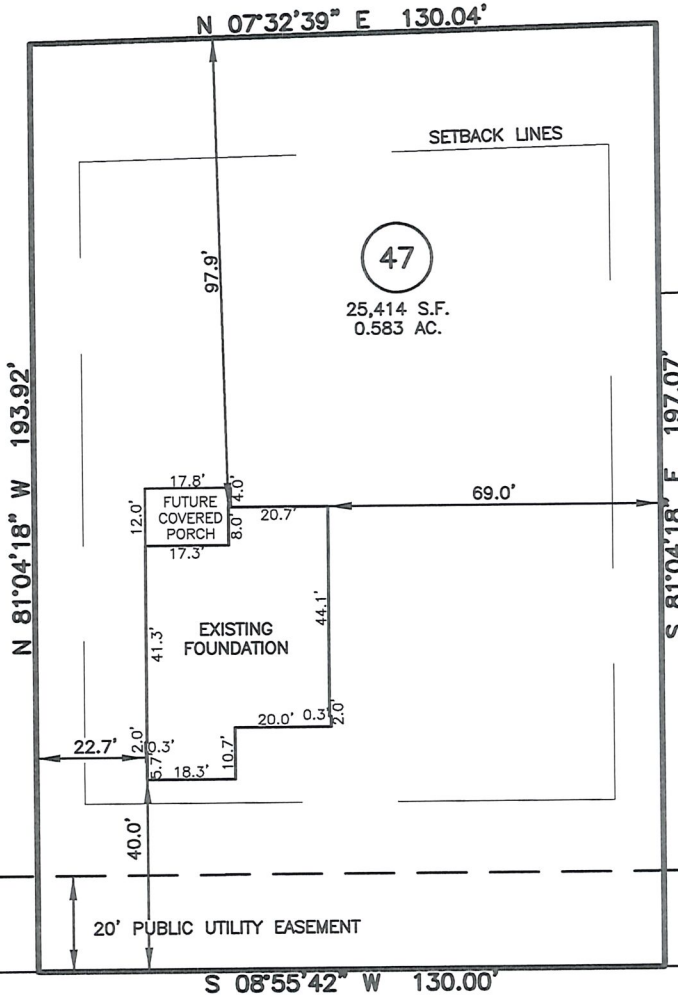
AS-BUILT IMPROVEMENTS FOR  
NEW HOME, INC.  
808 BEACON HILL ROAD  
LOT 47, DUNCAN'S CREEK PHASE 2  
UPPER LITTLE CREEK TOWNSHIP, HARNETT COUNTY, NORTH CAROLINA

LEGEND

- AIR CONDITIONER
- BACK OF CURB
- BACK FLOW PREVENTER
- CLEANOUT
- CURB INLET
- DHS DRILL HOLE SET
- ECM EXISTING CONCRETE MONUMENT
- EDH EXISTING DRILL HOLE
- EIS EXISTING IRON STAKE
- EIP EXISTING IRON PIPE
- EM ELECTRIC METER
- EPK EXISTING PK NAIL
- ES FLARED END SECTION
- FIRE HYDRANT
- FIBER OPTIC PEDESTAL
- GAS METER
- GUY
- INV. INVERT
- IPS IRON PIPE SET
- IRS IRON ROD SET
- LIGHT POLE
- MINS MAGNETIC NAIL SET
- MANHOLE SANITARY SEWER
- MANHOLE STORM SEWER
- OVERHEAD WIRES
- PK NAIL SET
- POINT NOT SET
- RAIL ROAD SPIKE
- TELEPHONE PEDESTAL
- TRANSFORMER
- CABLE TV PEDESTAL
- UTILITY POLE
- WATER METER
- WATER VALVE
- YARD INLET
- FIELD MEASUREMENT
- REVISION TRIANGLE

OPEN SPACE  
FUTURE PHASE 3  
DEVELOPMENT

B.M. 2025, PGS. 40-43



SETBACK INFO

FRONT: 35'  
REAR: 25'  
SIDES: 10'  
CORNER SIDE: 20'

BEACON HILL ROAD  
50' PUBLIC R/W

THIS AS-BUILT IS  
FOR CODE COMPLIANCE.  
NOT FOR SALES OR  
CONVEYANCE

WAKE COUNTY, NORTH CAROLINA

I CERTIFY THAT THIS MAP WAS DRAWN UNDER MY  
SUPERVISION FROM FIELDWORK DONE UNDER  
MY SUPERVISION; THAT THE IMPROVEMENTS LIE  
WHOLLY UPON THE LOT AND THAT THE PROPERTY  
SHOWN IS AN EXISTING PARCEL OR PARCELS OF  
LAND.

CHARLES R. PIRATZKY, R.L.S.  
L-2813

DATE



REFERENCES:

B.M. 2025, PGS. 40-43



SCALE: 1" = 40'

NOTES

- THIS SURVEY SUBJECT TO ANY FACTS THAT MAY BE DISCLOSED BY A FULL AND ACCURATE TITLE SEARCH.
- THIS MAP MAY NOT BE A CERTIFIED SURVEY AND HAS NOT BEEN REVIEWED BY A LOCAL GOVERNMENT AGENCY FOR COMPLIANCE WITH ANY APPLICABLE LAND DEVELOPMENT REGULATIONS AND HAS NOT BEEN REVIEWED FOR COMPLIANCE WITH RECORDING REQUIREMENTS FOR PLATS.

DATE: NOV. 10, 2025

Q:\FieldLoc\DNCK 47 FDN.txt

**RWK, PA**  
ENGINEERING ~ SURVEYING  
CORPORATE LICENSE: C-1771  
101 W. MAIN ST., SUITE 202  
GARNER, NC 27529  
PHONE (919) 779-4854  
FAX (919) 779-4056

Q:\DUNCAN'S CREEK\DNCK47\DNCK CREEK 47.DWG