

AS-BUILT IMPROVEMENTS FOR  
MATTAMY HOMES  
81 CLARABELLA DRIVE  
LOT 03, CLARABELLA SUBDIVISION  
BUCKHORN TOWNSHIP, HARNETT COUNTY, NORTH CAROLINA

N/F  
BETTS PROPERTIES LLC &  
RICHARD O. BETTS  
D.B. 3046, PG. 762

S 89°20'03" E 133.01'

LEGEND

- AIR CONDITIONER
- BACK OF CURB
- BACK FLOW PREVENTER
- CLEANOUT
- CURB INLET
- DRILL HOLE SET
- EXISTING CONCRETE MONUMENT
- EXISTING DRILL HOLE
- EXISTING IRON STAKE
- EXISTING IRON PIPE
- ELECTRIC METER
- EXISTING PK NAIL
- ELECTRIC STUB
- FLARED END SECTION
- FIRE HYDRANT
- FIBER OPTIC PEDESTAL
- GAS METER
- GUY
- INVERT
- IRON PIPE SET
- IRON ROD SET
- LIGHT POLE
- MAGNETIC NAIL SET
- MANHOLE SANITARY SEWER
- MANHOLE STORM SEWER
- OVERHEAD WIRES
- PK NAIL SET
- POINT NOT SET
- RAIL ROAD SPIKE
- TELEPHONE PEDESTAL
- TRANSFORMER
- CABLE TV PEDESTAL
- UTILITY POLE
- WATER METER
- WATER VALVE
- YARD INLET
- FIELD MEASUREMENT
- REVISION TRIANGLE

SETBACK LINES

3  
25,060 S.F.  
0.575 AC.

B.M. 2025, PGS. 514-516

4

SETBACK INFO

FRONT: 35'  
REAR: 25'  
SIDES: 10'  
CORNER SIDE: 20'

CLARABELLA DRIVE  
50' PUBLIC R/W

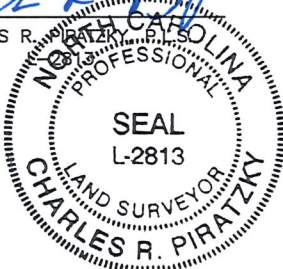
THIS AS-BUILT IS  
FOR CODE COMPLIANCE.  
NOT FOR SALES OR  
CONVEYANCE

WAKE COUNTY, NORTH CAROLINA

I CERTIFY THAT THIS MAP WAS DRAWN UNDER MY  
SUPERVISION FROM FIELDWORK DONE UNDER  
MY SUPERVISION; THAT THE IMPROVEMENTS LIE  
FULLY UPON THE LOT UNLESS OTHERWISE SHOWN  
AND THAT THE PROPERTY SHOWN IS AN EXISTING  
PARCEL OR PARCELS OF LAND.

CHARLES R. PIRATZKY

DATE



DATE: OCT. 20, 2025

Q:\FieldLoc\CLBA\_3-5\_FDN.txt

REFERENCES:

B.M. 2025, PGS. 514-516



SCALE: 1" = 30'

NOTES

- THIS SURVEY SUBJECT TO ANY FACTS THAT MAY BE DISCLOSED BY A FULL AND ACCURATE TITLE SEARCH.
- THIS MAP MAY NOT BE A CERTIFIED SURVEY AND HAS NOT BEEN REVIEWED BY A LOCAL GOVERNMENT AGENCY FOR COMPLIANCE WITH ANY APPLICABLE LAND DEVELOPMENT REGULATIONS AND HAS NOT BEEN REVIEWED FOR COMPLIANCE WITH RECORDING REQUIREMENTS FOR PLATS.

**RWK, PA**  
ENGINEERING ~ SURVEYING  
CORPORATE LICENSE: C-1771  
101 W. MAIN ST., SUITE 202  
GARNER, NC 27529  
PHONE (919) 779-4854  
FAX (919) 779-4056

C:\CLARABELLA\CLBA03\CLBA03.DWG