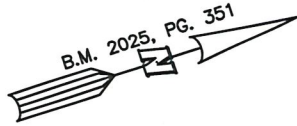
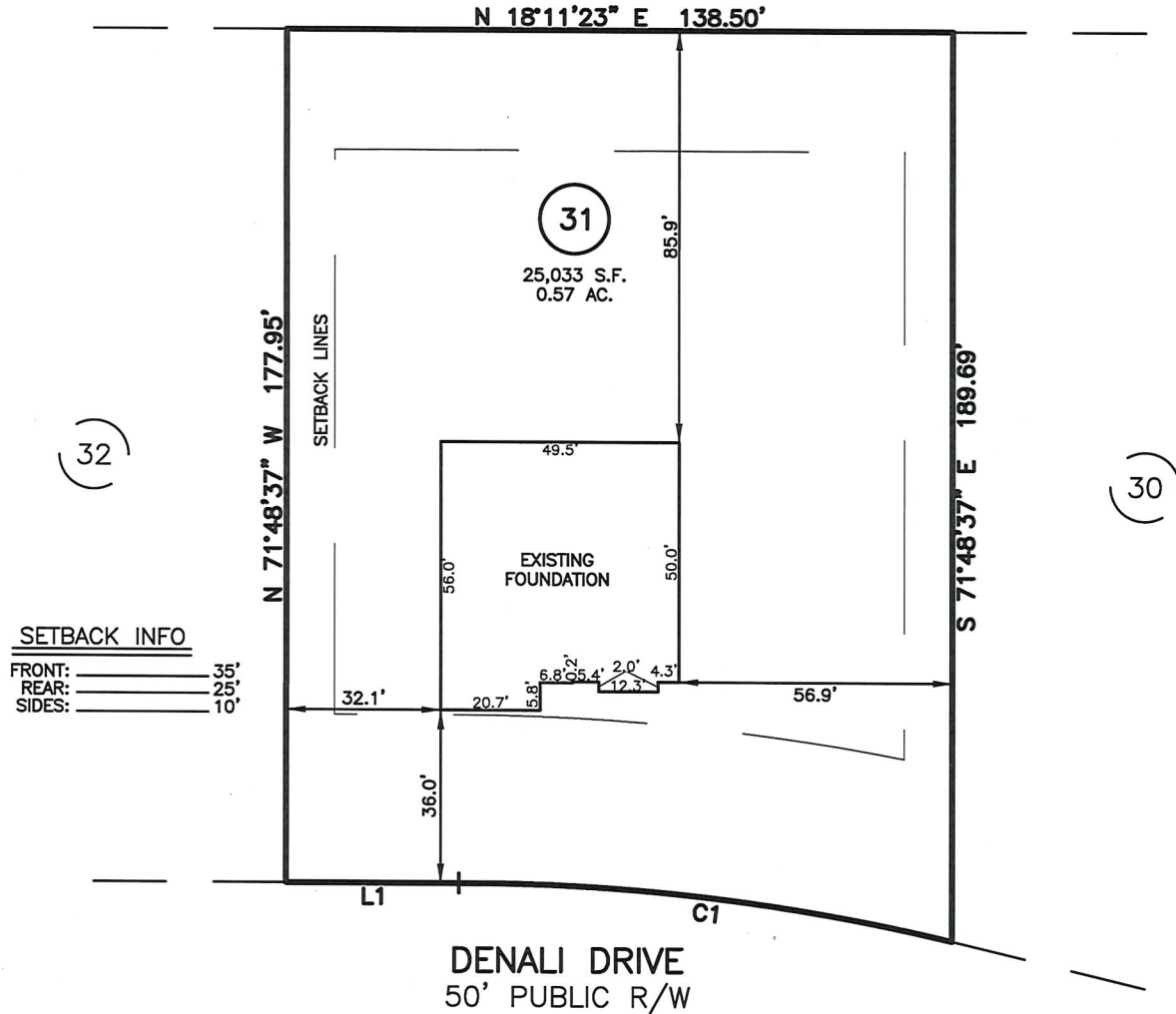


AS-BUILT IMPROVEMENTS FOR
MATTAMY HOMES, LLC.
296 DENALI DRIVE
LOT 31, RIVERFALL SUBDIVISION PHASE TWO
BLACK RIVER TOWNSHIP, HARNETT COUNTY, NORTH CAROLINA



N/F
CURRIN HEIRS LLC
PIN:0682-18-3576
DB 2612, PG 367



SETBACK INFO

FRONT: 35'
REAR: 25'
SIDES: 10'

NUM	RADIUS	ARC	DELTA	CHORD BRG	CHORD
C1	429.34'	103.48'	13°48'32"	S 24°43'29" W	103.23'

LINE	BEARING	DISTANCE
L1	S 18°11'23" W	35.94'

LEGEND

△	AIR CONDITIONER	INV.	INVERT
BC	BACK OF CURB	IPS	IRON PIPE SET
BFP	BACK FLOW PREVENTER	IRS	IRON ROD SET
○	CLEANOUT	○	LIGHT POLE
■	CURB INLET	MNS	MAGNETIC NAIL SET
DHS	DRILL HOLE SET	○	MANHOLE SANITARY SEWER
ECM	EXISTING CONCRETE MONUMENT	○	MANHOLE STORM SEWER
EDH	EXISTING DRILL HOLE	○	OVERHEAD WIRES
EIS	EXISTING IRON STAKE	PKS	PK NAIL SET
EIP	EXISTING IRON PIPE	PNS	POINT NOT SET
EM	ELECTRIC METER	RRS	RAIL ROAD SPIKE
EPK	EXISTING PK NAIL	○	TELEPHONE PEDESTAL
ES	ELECTRIC STUB	○	TRANSFORMER
▽	FLARED END SECTION	○	CABLE TV PEDESTAL
○	FIRE HYDRANT	○	UTILITY POLE
○	FIBER OPTIC PEDESTAL	○	WATER METER
GM	GAS METER	○	WATER VALVE
→	GUY	○	YARD INLET
		()	FIELD MEASUREMENT

THIS AS-BUILT IS
FOR CODE COMPLIANCE.
NOT FOR SALES OR
CONVEYANCE

WAKE COUNTY, NORTH CAROLINA

I CERTIFY THAT THIS MAP WAS DRAWN UNDER MY SUPERVISION FROM FIELDWORK DONE UNDER MY SUPERVISION; THAT THE IMPROVEMENTS LIE WHOLLY UPON THE LOT AND THAT THE PROPERTY SHOWN IS AN EXISTING PARCEL OR PARCELS OF LAND.

CHARLES R. PIRATZKY, P.L.S.
L-2813

DATE



DATE: NOV. 05, 2025

Q:\FieldLoc\RVFL_31_FDN.txt

REFERENCES:

B.M. 2023, PG. 638



SCALE: 1" = 40'

NOTES

1. THIS SURVEY SUBJECT TO ANY FACTS THAT MAY BE DISCLOSED BY A FULL AND ACCURATE TITLE SEARCH.
2. THIS MAP MAY NOT BE A CERTIFIED SURVEY AND HAS NOT BEEN REVIEWED BY A LOCAL GOVERNMENT AGENCY FOR COMPLIANCE WITH ANY APPLICABLE LAND DEVELOPMENT REGULATIONS AND HAS NOT BEEN REVIEWED FOR COMPLIANCE WITH RECORDING REQUIREMENTS FOR PLATS.

RWK, PA
ENGINEERING ~ SURVEYING
CORPORATE LICENSE: C-1771
101 W. MAIN ST., SUITE 202
GARNER, NC 27529
PHONE (919) 779-4854
FAX (919) 779-4056

Q:\RIVERFALL\RVFL_31\RVFL_31.DWG